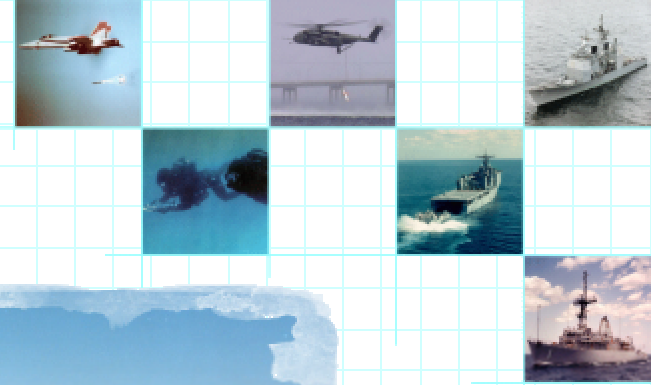




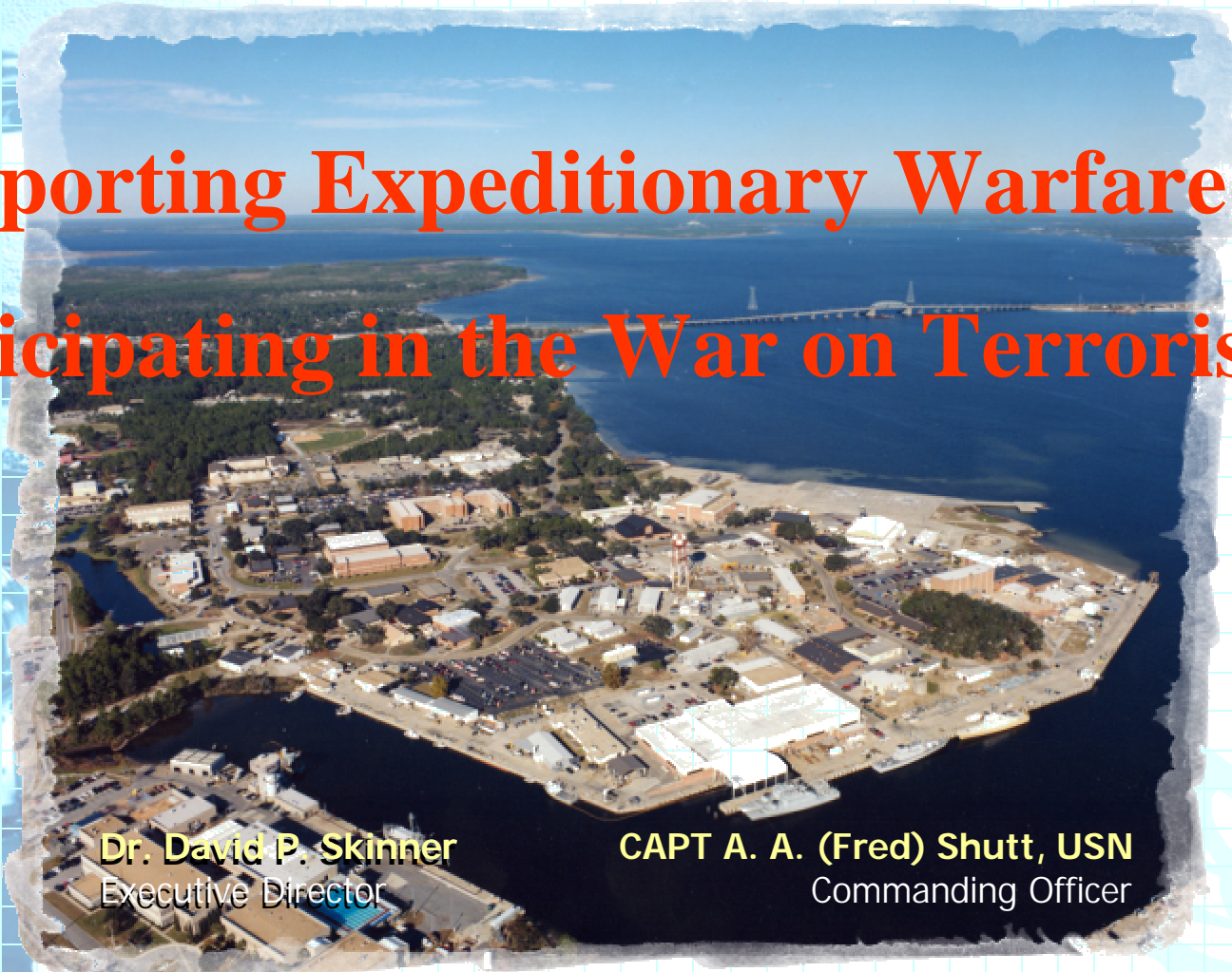
Naval Sea Systems Command

Coastal Systems Station

The leader in littoral warfare



Supporting Expeditionary Warfare... Participating in the War on Terrorism'



Dr. David P. Skinner
Executive Director

CAPT A. A. (Fred) Shutt, USN
Commanding Officer



The Coastal Systems Station Strategic Perspective

*Littoral Warfare
RDT&E Laboratory*

Thrusts

Unmanned Systems

Maritime Security/Force Protect

Littoral Combat Ship

Joint Training, T&E

Expeditionary Combat Systems

**National
Security
Landscape**

Core Mission Areas Leadership

Core

Special Warfare

Science and Technology

Mine Warfare

Expeditionary Maneuver Warfare

Diving & Life Support Systems

Coastal Operations

Foundational Areas

Develop A World Class Work Force

Enhance Excellence In Technical Functions

Develop Mutually Beneficial Partnerships

Implement Business & Process Management

Mission

Provide research, development, test and evaluation, engineering and fleet support for:

Mine Warfare



Expeditionary Maneuver Warfare



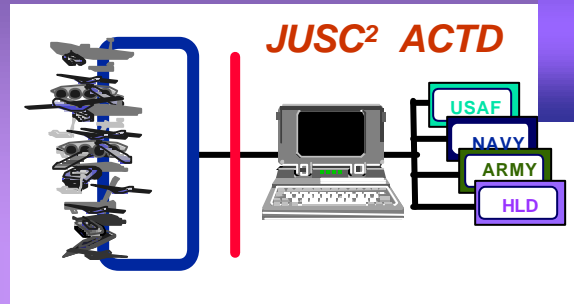
Operations in Extreme Environments

Maritime Special Operations

And other Naval missions that take place in coastal regions

FY 03 Priorities

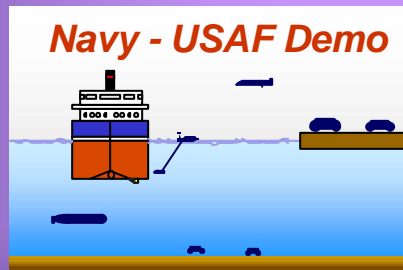
Unmanned Systems
Common Control



LCS
Mission Packages



Unmanned Systems Joint / Homeland Defense Applications



Unmanned Systems for Littoral Warfare



Teaming





Coastal & Maritime Security



OPNAV N34
Force Protection

DTRA
DEFENSE THREAT REDUCTION AGENCY

Defense Threat
Reduction Agency (DTRA)
Combating Terrorism



OPNAV 757
Mobile Security Force

DOD/PSEAG
Waterside/Landside
Decision Support Tool



Center for Coastal &
Maritime Security (CCMS)

Homeland Defense



LCS MISSIONS = ASSURED ACCESS TO THE LITTORALS

The Leader In Littoral Warfare

CSS Core Mission Areas and Technical Capabilities Aligned With Missions of LCS.

Our Expertise in These Mission Areas Will Help Make the Vision of This Revolutionary Combatant a Reality in the Years to Come.

LCS Will Be the Surface Navy's Kingpin to Fight the War on Terrorism in the Littorals Both in Homeland Defense and Abroad.

Long History
Developing

UNMANNED

MISSION

SYSTEMS

MISSION SYSTEMS

- Mine Warfare
- Special Warfare
- Maritime Interdiction
- Homeland Defense
- Littoral ASW w/ MIW Sensors
- ISR

Modular Mission Packages
Tactics / COE

Standard Interfaces

Synergy Between Payloads

Common Handling

Common L&R

UNMANNED SYSTEMS

- Remote/Autonomous Control Logic
- Systems Integration
- Multi-vehicle Coordination / Common C²
- Data Fusion To Knowledge



“The MIW Community Is Way Ahead of All Other Mission Areas in the Application and Use of Unmanned Systems”

CDR Carl Carlson (NWC 9/19/02)

LCS FACILITIES COMPLEX

- Prototype Testing In a Realistic Environment
- Integrate, Test, and Certify LCS Production Systems
- Train/Cross-Train LCS Fleet Personnel to Operate, Maintain At-sea and Deploy/Recover Multiple Mission Packages for All LCS Warfare Areas



Joint Training, Test and Evaluation

- CSS as Stakeholder in the Joint Gulf Range Complex - preparing a World Class Test and Training Area to enable 21st Century Warfighters
- Support of Carrier Battlegroup Training
 - Support for Mine Warfare Training and Exercises
 - Support MEU and MEB Level Amphibious Training
- Perform Developmental and Operational Testing in Support of Littoral Warfare RDT&E
- Support of Fleet Battle Experiments
- Current Initiatives
 - New Beach Site Building
 - Underwater Tracking System
 - Enhanced Overwater Impact Scoring for Naval Guns
 - Underwater Fiber Optic Sensor Field Upgrade
 - Fiber Optic Connectivity Between Joint Gulf Range Complex Service Partners



EXPEDITIONARY WARFARE STRATEGIC THRUST

- ◆ **System Engineering Analysis of Environment and Warfare System Requirements**
 - EXW Mission Requirements Implications for EXW Combat Capability
 - Augment Current Combat Capability Requirements with EXW
 - Transformation of Sea Basing, Sea Shield, & Sea Strike Requirements
 - Combat System Capabilities Layout - Legacy and Developmental
 - Identifying Key System Performance Parameters
 - Exploit Multi-site Collaborative Process
 - Facilities for Experimentation and Demonstration
- ◆ **Engineering Roadmap Development**
- ◆ **Installations and Operational Deployment Support (ESG deployment planning, testing, analysis)**



Major Contractors

- Lockheed Martin
- Northrop Grumman
- Gryphon Technologies, L.L.C.
- Dynamic Engineering
- Averstar, Inc.
- Arinc, Inc.
- Caterpillar, Inc.
- Nortel Network
- Mevatec Corp.
- Presearch Inc.
- Titan
- Raytheon Systems
- Sikorsky Aircraft Corp.
- Analysis & Technology
- Rolls Royce America
- Harris Corp.
- L3 Communication
- Delphinus Engineering
- Outboard Marine
- Applied Research Inc
- KPMG