



Tetra Tech, Inc.

**Database and GIS Solutions  
Developed During the Anthrax  
Emergency Cleanup Response  
on Capitol Hill, Washington D.C.**

29<sup>th</sup> Environmental and Energy Symposium  
& Exhibition  
Richmond, VA  
April 7-10, 2003

**Randy Dorian**  
(303)312-8832  
randy.dorian@ttemi.com

**Randy Nattis**  
(404)225-5530  
randy.nattis@ttemi.com



## Outline

- Describe the situation
- State the problem
- Data migration
- Challenges and Implementation
- Summary

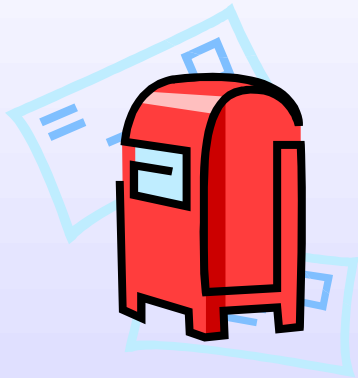


## Describe the Situation



# Anthrax Contamination on Capitol Hill

Anthrax-contaminated letter was opened in the Hart Senate Office Building on October 15, 2001

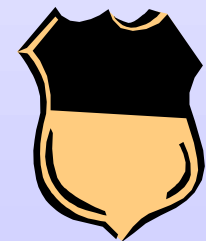


09-11-01  
YOU CAN NOT STOP US.  
WE HAVE THIS ANTHRAX.  
YOU DIE NOW.  
ARE YOU AFRAID?  
DEATH TO AMERICA.  
DEATH TO ISRAEL.  
ALLAH IS GREAT.



## Mobilize to Washington, D.C.

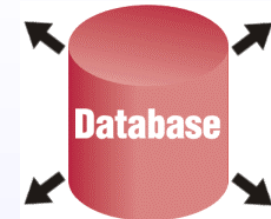
Assist government agencies with evaluating the level of contamination and appropriate cleanup strategies.



# Tasks

- Database

- Track environmental samples and results
- Delineate areas of contamination



- GIS

- Identify precise locations of Anthrax contaminated areas
- Characterize, isolate, remediate



- Data Review

- Committee review of all maps and reports
- Evaluate cleanup success
- Final reports

# State the Problem



## Issues



- Hundreds of biological samples collected daily
- Labs have quick turn-around time
- Quick integration of samples and results for immediate review
  
- Initial procedures lacked dynamic, updateable links between maps and databases
  - Microsoft VISIO
  - CAD maps
  - Multiple databases





# Solution

- Develop procedures for quickly creating and maintaining accurate, reliable, updatable, dynamic, easy-to-use data reports and maps
  - ESRI ArcView 8
  - Master database with custom interface

**REPORTS - Formatted**

STEP 1: Select type of report (either sample counts or sample results)

Select a Senator/Suite in the Hart Office Building

What type of report do you want?

- Building Summary Count Report (counts number of samples and results)
- Room Summary Count Report (counts number of samples and results)
- Detail Report (shows detailed sample information)

STEP 2: Select the type of Detail Report (skip this step for Count Reports)

Choose which detail Report you want

- Portrait - minimal details (8.5 x 11)
- Landscape - same as Portrait but with objects and comments (8.5 x 11)
- Landscape Tabloid - very detailed information (11 x 17)

STEP 3 (optional): Select criteria to use for filtering the report. Leave options blank if want to see all the data for detail selected in Step 1.

Building  Result  Intent


Floor  Sample Type

Room

Select as many rooms as you want included in the report.

If you want all rooms on a certain floor don't select any rooms but select the floor instead.

Developed by Tetra Tech EM Inc. (2001-2002) for the Anthrax Emergency Response Effort at the Capitol



# Data Migration

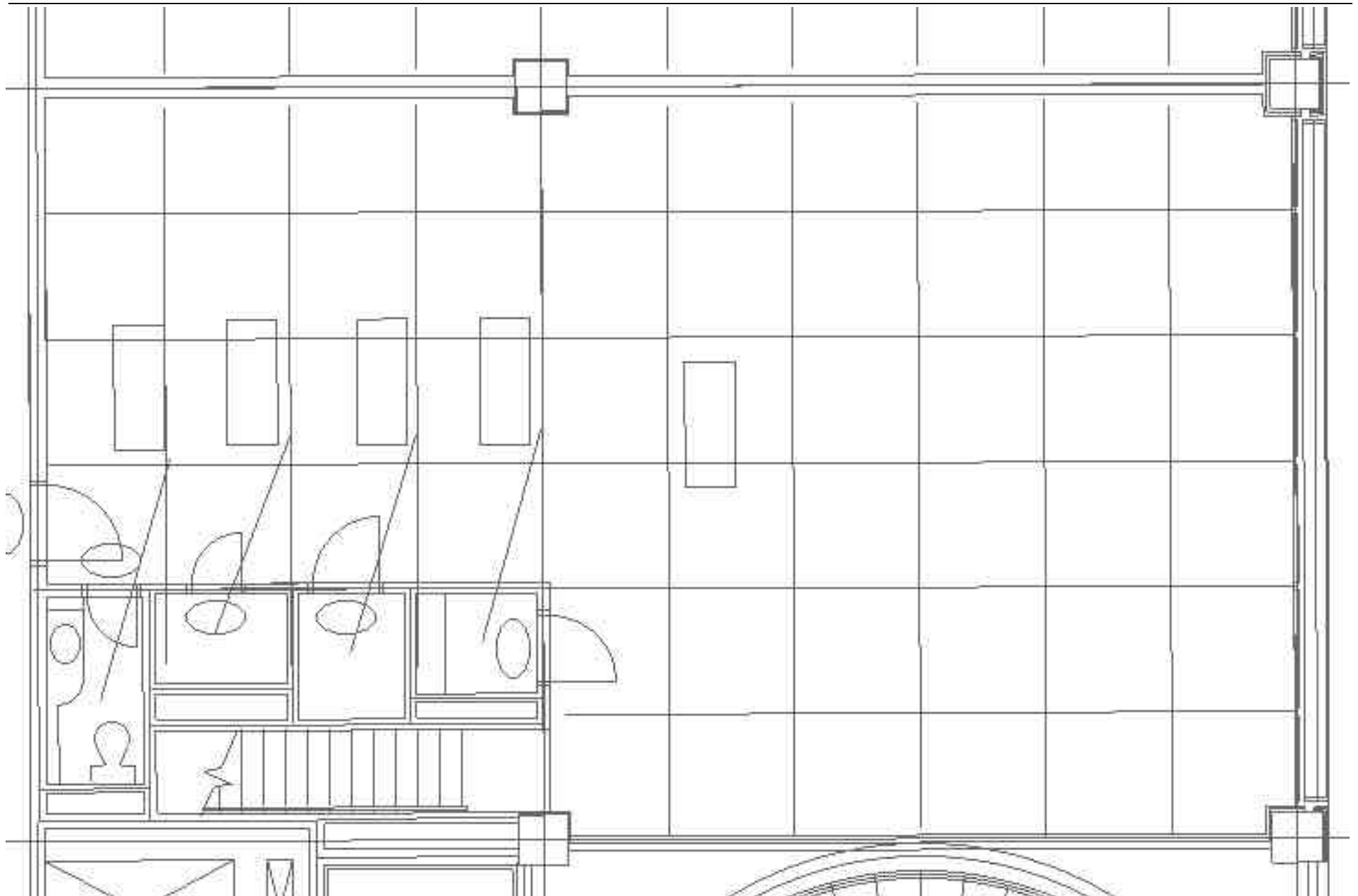


# Basemaps

- Initial GIS Import
  - CAD files with detailed flow plans for each building
    - Bentley's MicroStation
    - Source: AOC
  - dBase format data
- Geodatabase
  - Dynamic adjustments to various features
    - Walls
    - Closets
    - Hallways
    - Furniture



## Static basemap from MicroStation



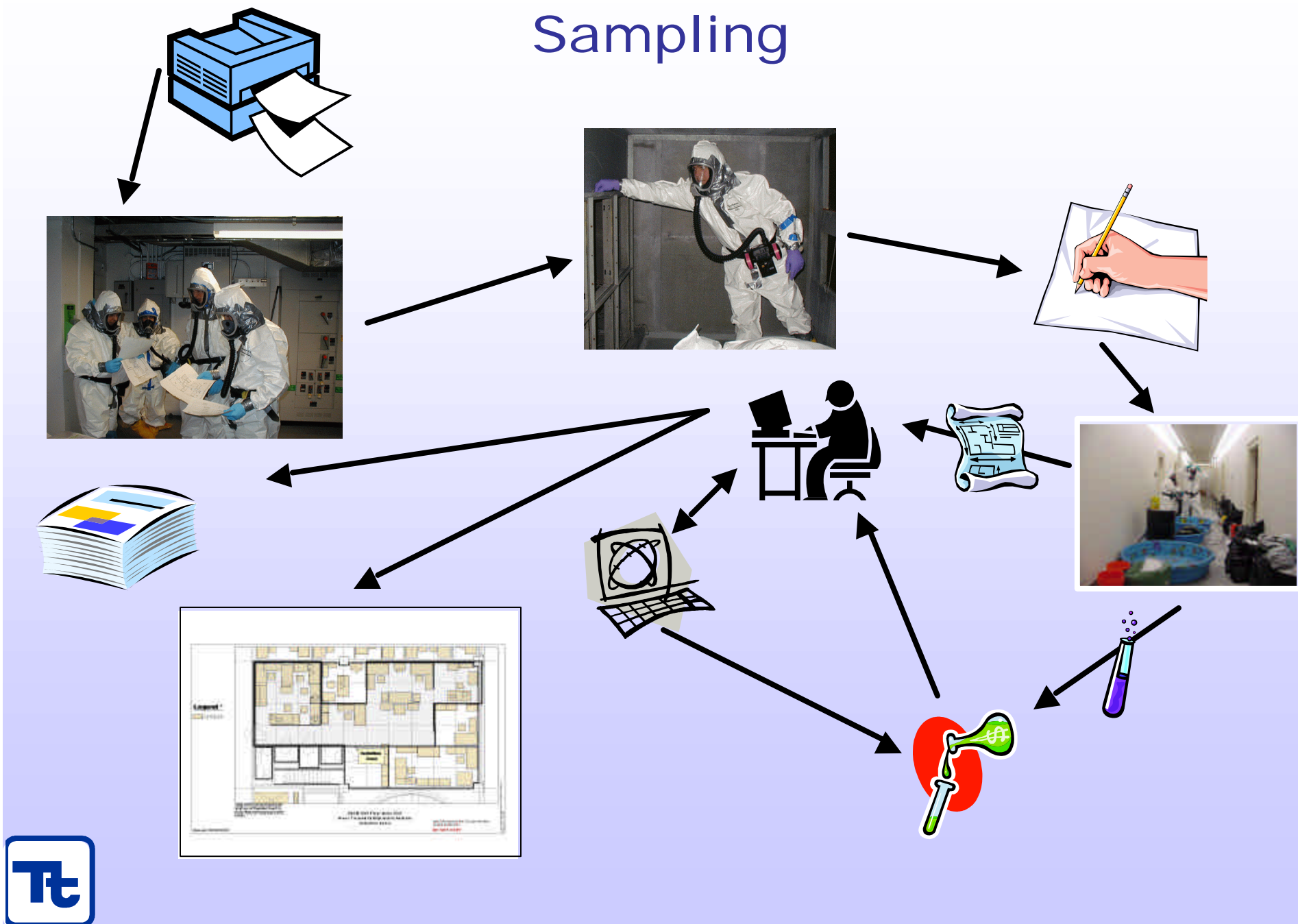


## Quality Control Issues

- 5,000 samples with results imported during initial GIS import
  - Used COC forms and sampler's notes
  - Adjust geodatabase features
- 100 samples collected each day
  - Provide samplers with pre-printed COC forms and detailed maps
- Updates to database and GIS based on sampler's notations
- dBase exports



# Sampling



# Challenges and Implementation





# Samples

- Various sample types
  - Wipe
  - HEPA
  - Swab
  - Personal Air
  - Area Air



# Symbology

- Maintain data integrity and consistency

**Symbology**

INTENT

Sample Type	IA	CH	WV	POSITIVE
	NEGATIVE			
Aggressive AIR				
Area AIR				
Personal AIR				
HEPA				
SWAB				
WIPE				
HEPA Composite				
WIPE Composite				

## Sample Intents

Hundreds of maps and database reports produced for each intent

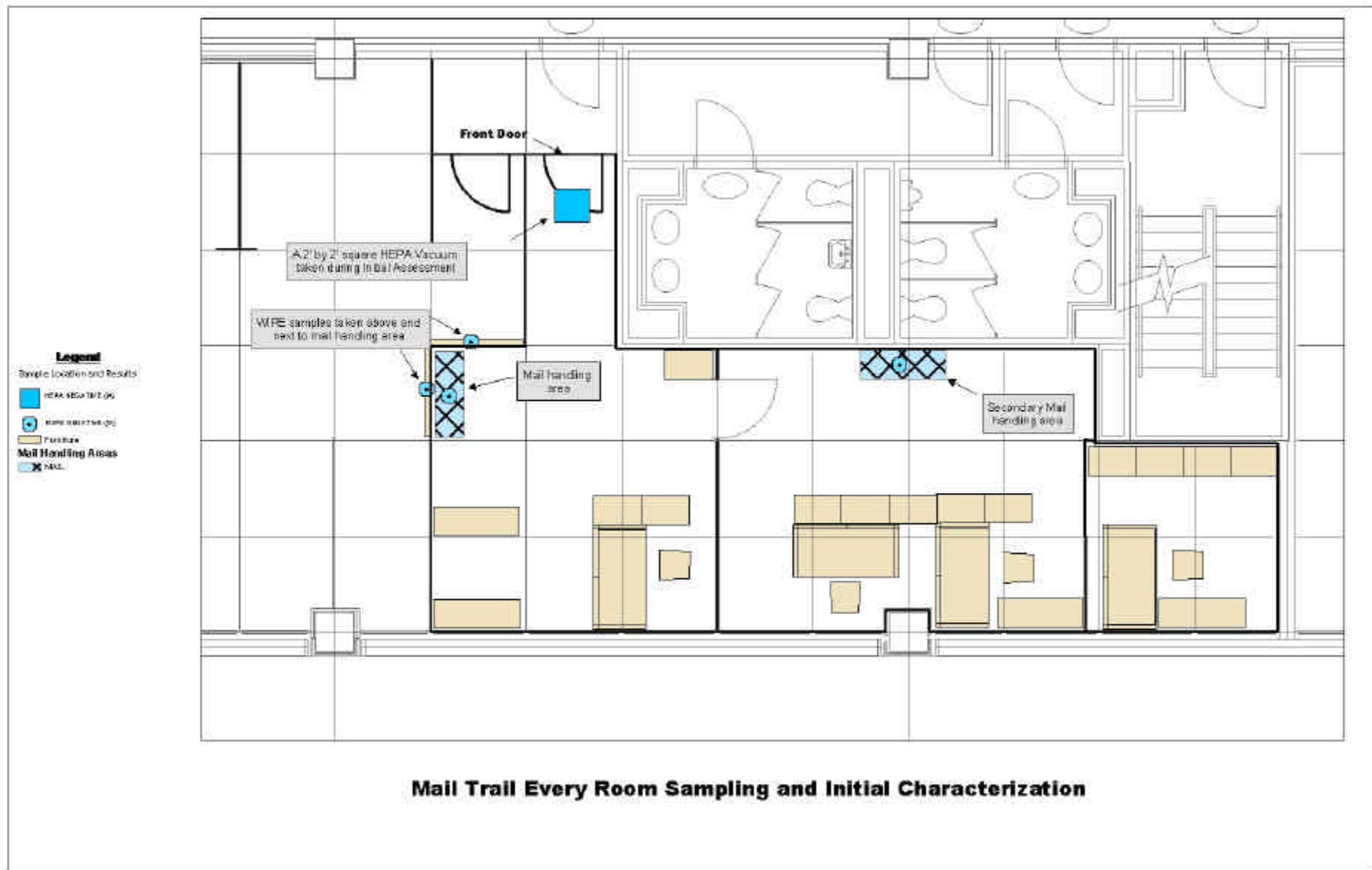
- Initial assessment (IA)
- Characterization (CH)
- Verification (VV)



## Initial Assessment

- Mail Trail (follow the mail)
- Wipe and HEPA collected at entrance of all mail handling areas





# Characterization

- All rooms and areas sampled
  - Had a positive hit during IA
  - Not previously sampled
- If positive, then additional sampling to enable in-depth characterization and delineation

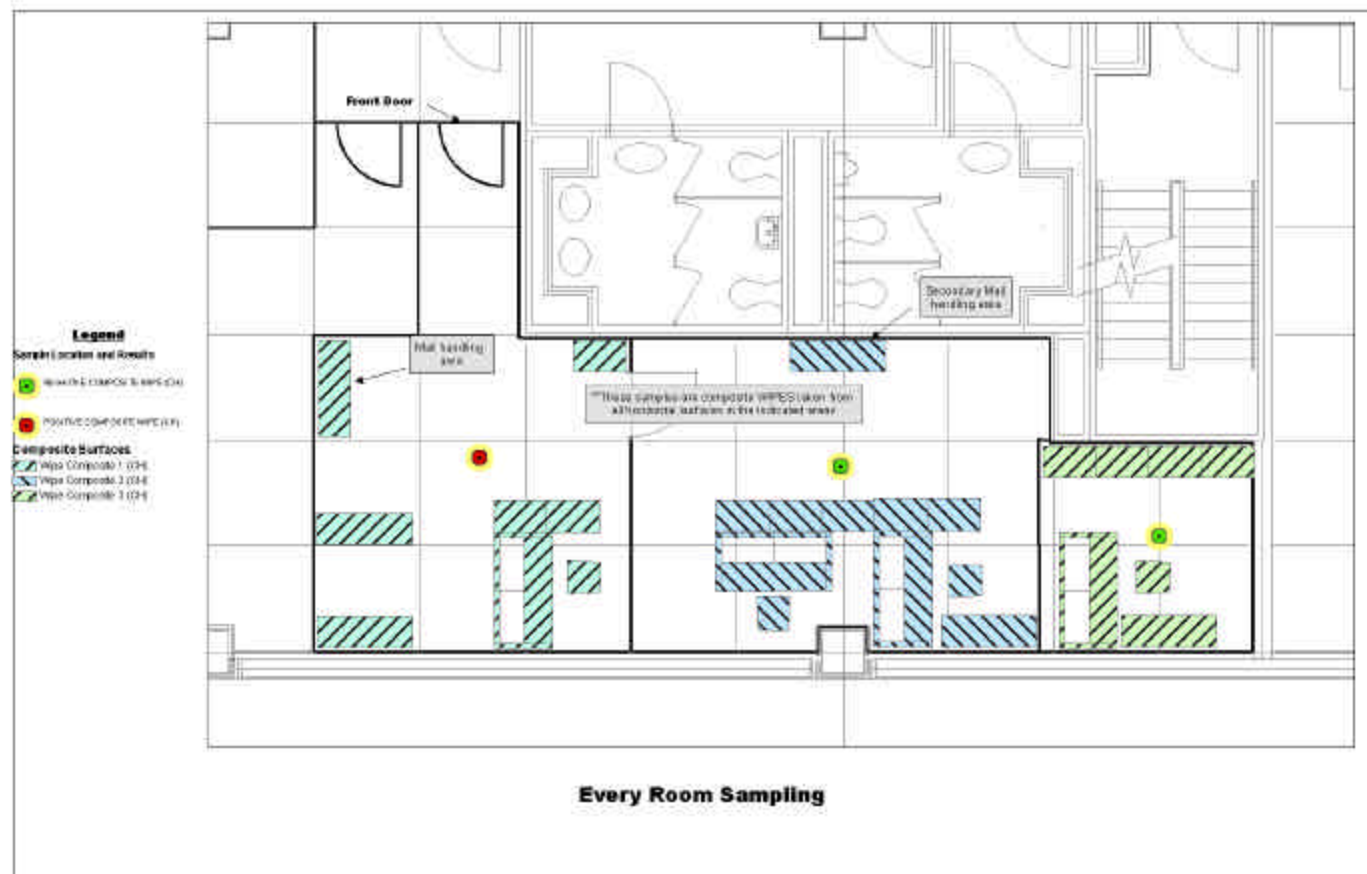




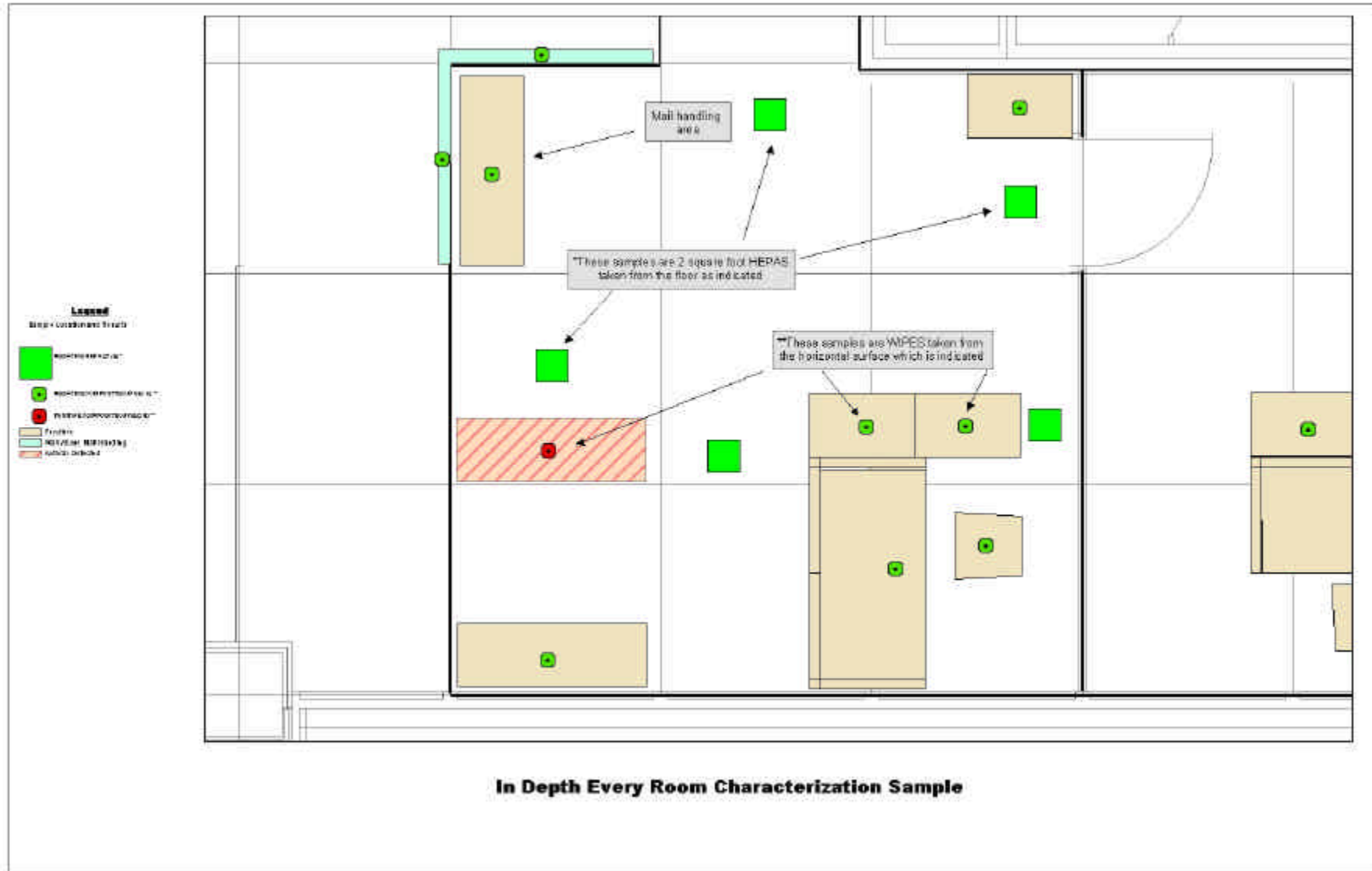
**In Depth Characterization Sample Location Map**

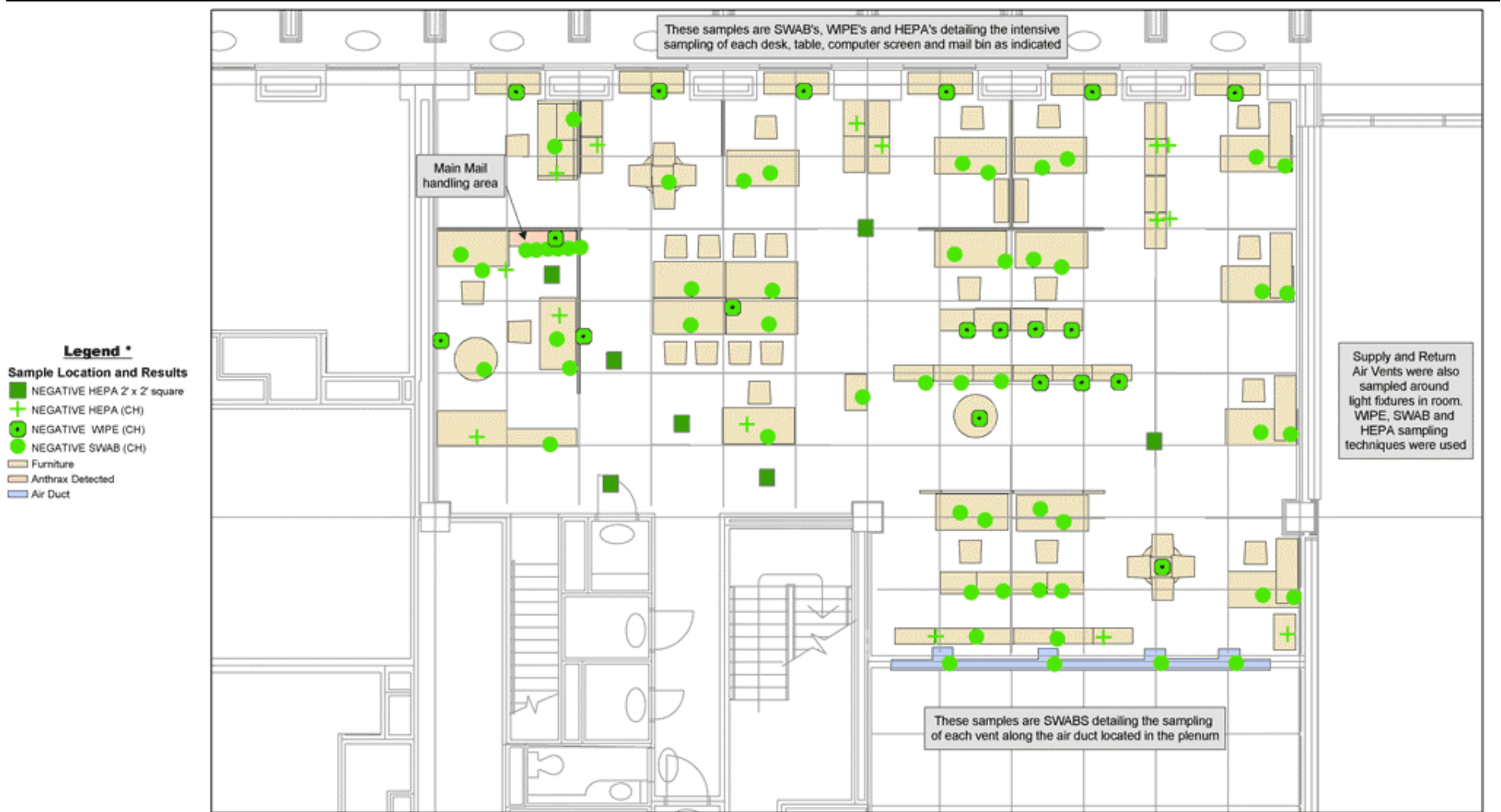
# In-depth Characterization

- Every Room sampling
  - Each room divided into areas
  - One composite sample from all horizontal surfaces in each area

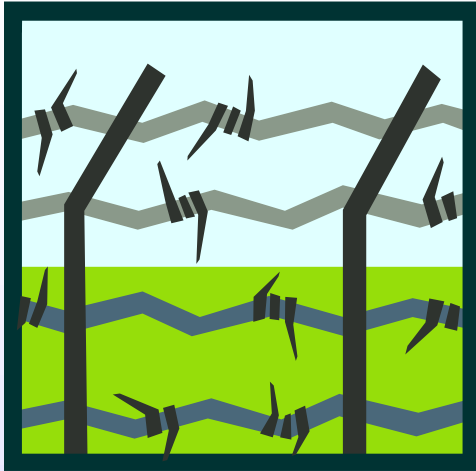






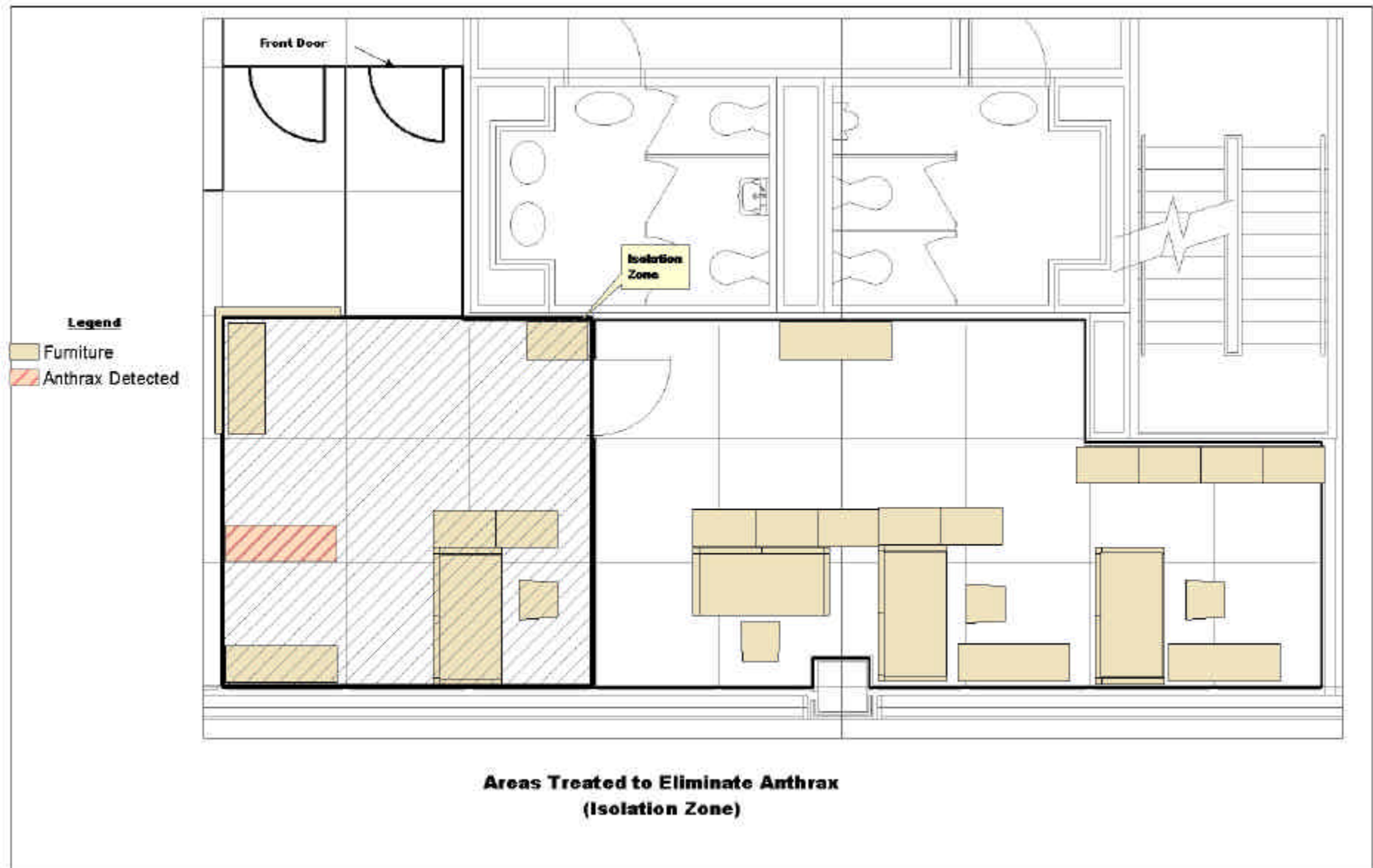


# Verification



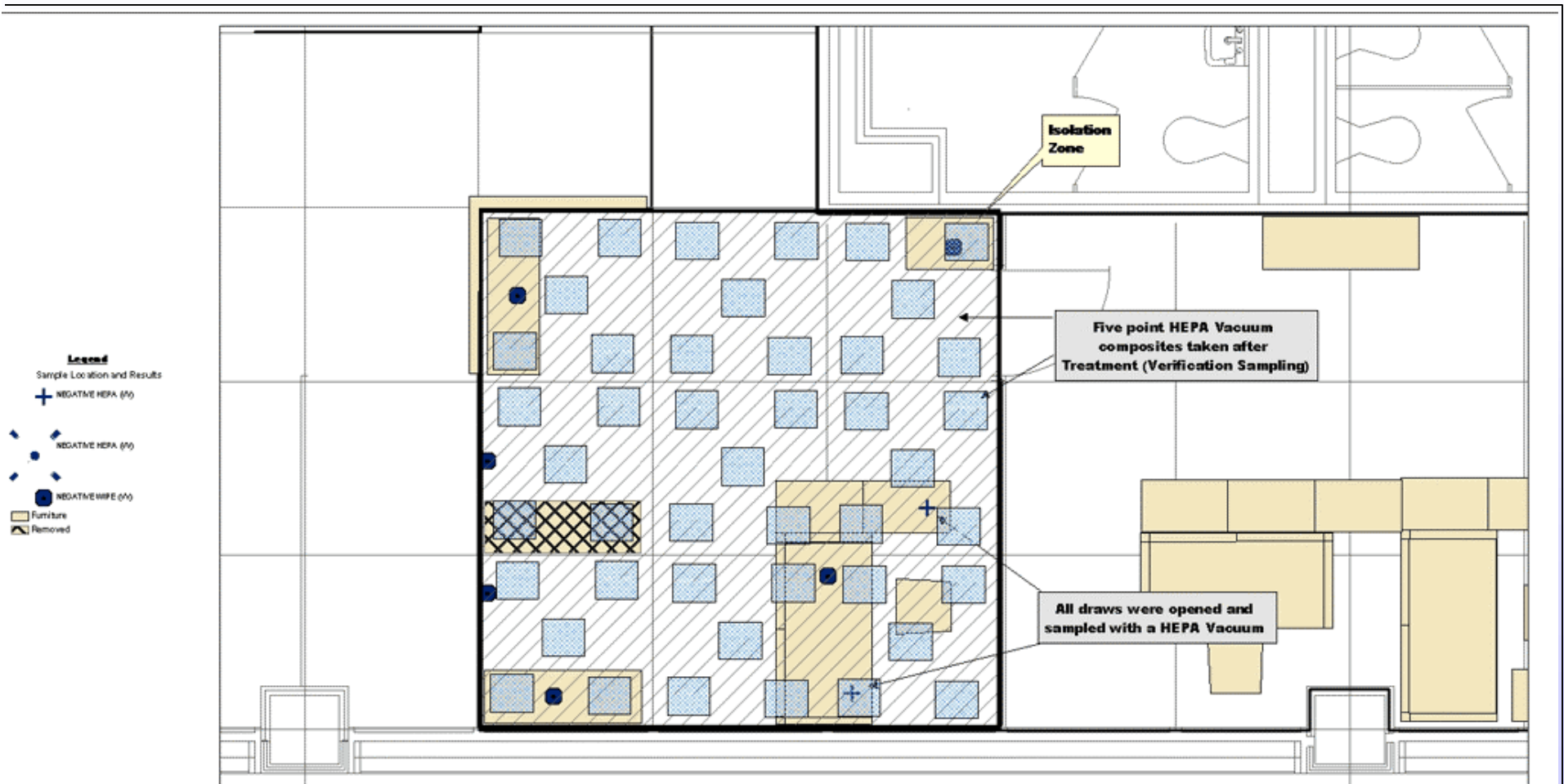
- Contaminated areas physically isolated and remediated
- Verification samples taken after remediation event to ascertain success or failure





# Isolation Zone





## Verification Samples

# Custom Database

**REPORTS - Formatted**

STEP 1: Select type of report (either sample counts or sample results)

Select a Senator/Suite in the Hart Office Building

What type of report do you want?

- Building Summary Count Report (counts number of samples and results)
- Room Summary Count Report (counts number of samples and results)
- Detail Report (shows detailed sample information)

---

STEP 2: Select the type of Detail Report (skip this step for Count Reports)

Choose which detail Report you want

- Portrait - minimal details (8.5 x 11)
- Landscape - same as Portrait but with objects and comments (8.5 x 11)
- Landscape Tabloid - very detailed information (11 x 17)

---

STEP 3 (optional): Select criteria to use for filtering the report. Leave options blank if want to see all the data for detail selected in Step 1.

Building  Result  Intent


Floor  Sample Type

Room

Select as many rooms as you want included in the report.

If you want all rooms on a certain floor don't select any rooms but select the floor instead.

Developed by Tetra Tech EM Inc. (2001-2002) for the Anthrax Emergency Response Effort at the Capitol



- Hundreds of custom queries and reports needed to support cleanup decisions
- Dynamically query sample data and results
- Easy-to-use, non-technical user interface developed
  - Allowed users to view and print a number of complex reports



# Summary





## Summary

- GIS and a single, master database greatly outperformed the original VISIO environment with multiple databases
- Rapid querying of results during constant flow of data
  - Tabular report
  - Graphic view
- QA/QC : cross referencing the analytical database with GIS ensured consistency between sample objects and locations
- Support of sampling and cleanup decisions
  - 100's of reports and more than 1,000 maps
- Facilitated the reopening of government buildings



## Conclusions

- Database and GIS combination greatly shortened the time needed for data evaluations

**Rapid, well-informed decisions could be made that protected human health and expedited the return to normalcy on Capitol Hill.**



