

Tool to Facilitate CMMI Appraisals

Preparation, Collaboration and Execution

Presented by
Wes Sweetser
Candidate SCAMPI Lead Appraiser
Wesley.D.Sweetser@nasa.gov
WesleySweetser@netscape.net

Outline

- Tool Description
- Tool Benefits
- Appraisal preparation and collaboration
- Appraisal execution
- Tool Limitations and Workarounds
- Obtaining the free tool (*for government-related use only pending permission from the SEI for public release*)
- Backup slides
 - System requirements
 - References
 - Acronyms

Tool Description

Tool Description

- Background

- While preparing for an appraisal in 2003, I discovered that filling out a giant spreadsheet may not be the best approach
- I wanted a tool that would allow others (such as project teams) to collaborate and participate easily in the appraisal preparation process
- I wanted a tool that could also be used during the appraisal to streamline appraisal activities
- The tool was developed and tested prior to and during an actual SCAMPI appraisal

Tool Description

- The tool
 - is intended to facilitate Standard CMMI Appraisal Method for Process Improvement (SCAMPI) appraisal preparation, collaboration and execution by providing the entire framework, user-friendly data entry screens, and reports in a MS Access 2002 database
 - provides an alternative to creating and using PIIDs in the typical MS Excel format
 - is free, and tailorable for internal use
- A Windows Help file is provided describing each step of the process

Tool Description

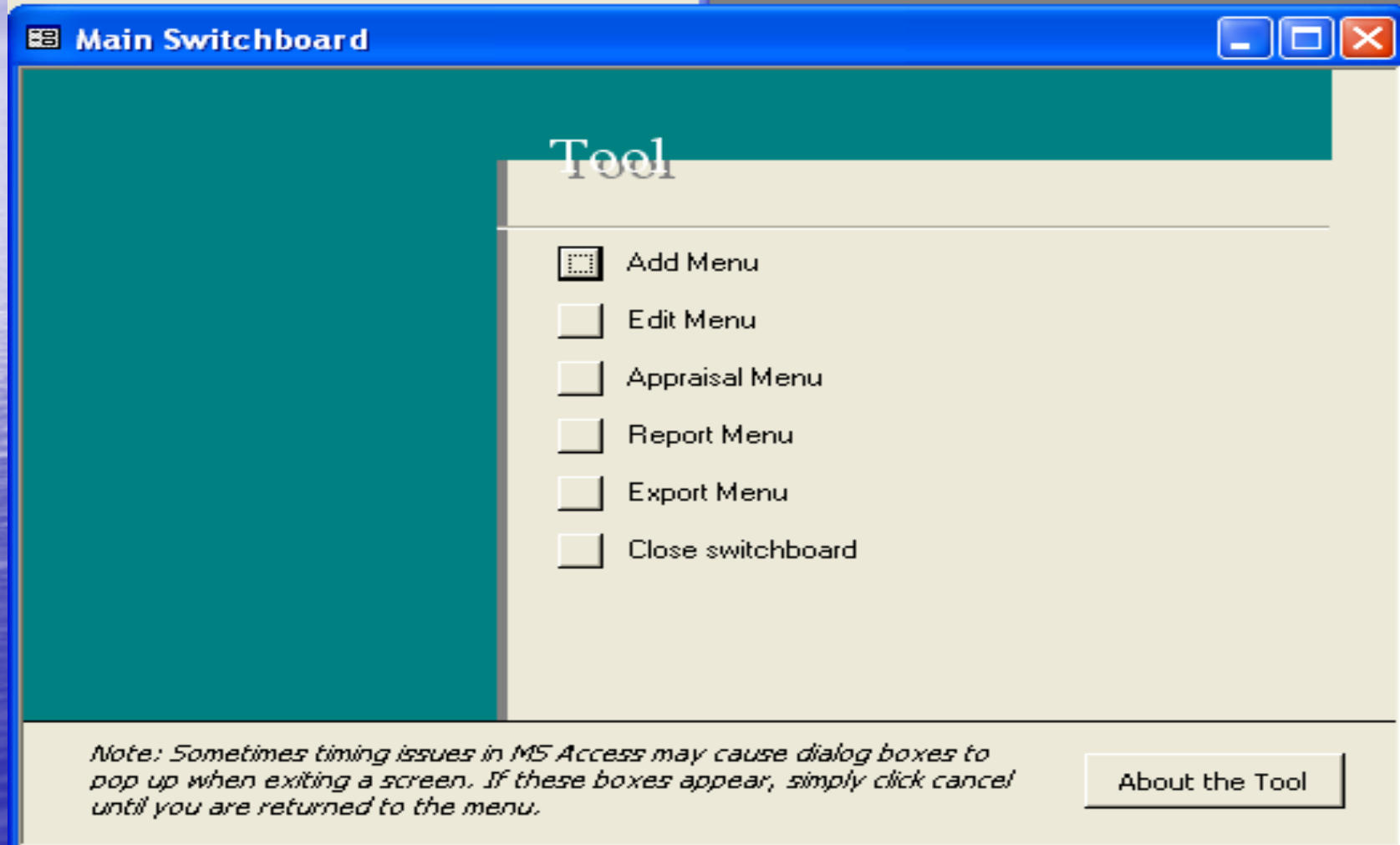
- Twenty-five Capability Maturity Model Integration (CMMI) process areas are included from the SE/SW, IPPD, and SS continuous models.
 - The continuous representation is encouraged because it allows organizations to ease into the “CMMI world” gradually, while still allowing for staged maturity level equivalencies.

Tool Description

- Artifacts and appraisal information can be stored for multiple organizations, and multiple projects within each organization
- Drop down lists present CMMI process areas and practices, along with sample artifacts used to satisfy each practice
- All reference data can be modified to suit your organization's needs
- Hyperlink capability is available to link electronic documents directly to the database

Tool Description

Main Menu



Tool Benefits

Tool Benefits

- Provides a user-friendly transition to appraisal preparation for novices
- Provides simplified data entry for experts
- Multiple users can work on appraisal preparation activities concurrently
- Provides enhanced capability for appraisal data reporting and analysis
- Provides suggestions for rolling up project practice characterizations

Tool Benefits

- Reports can be generated to determine readiness for an appraisal at any given point in time
- MS Access-aware power users may add Practice example artifacts related to the organization, as desired, to build an organization-wide knowledge base
- Hyperlinks can be entered which can help reduce time spent on the actual appraisal
- Observations can be entered during the appraisal, which can later be exported for use in the final findings presentation as strengths and improvement opportunities
- The chart of capability levels is produced automatically at the end of the appraisal

Tool Benefits

- A Windows Help file is included describing each step of the process, including screen shots of the application
- The tool can be used for process improvement without doing a formal SCAMPI appraisal
- There exists the possibility of improved configuration control of artifacts and appraisal records
- There exists the general capability to add new data fields for measurement and analysis depending on the organization's goals and objectives

Appraisal Preparation and Collaboration

Appraisal Preparation and Collaboration

- To prepare for a CMMI appraisal involves collecting evidence
- The tool provides drop-down lists and hyperlink capability for ease of data entry
- Storing the database on an organizational network allows users to enter and share information in a collaborative fashion

Appraisal Preparation and Collaboration

Adding data – see next screen

Add Practice Artifacts

Artifact Entry for Project

P1
P2
P3

for Organization Home

Process Area

Causal Analysis and Resolution
Configuration Management
Decision Analysis and Resolution
Integrated Project Management
Integrated Supplier Management
Integrated Teaming
Measurement and Analysis
Organizational Environment for Integration
Organizational Innovation and Deployment

Practice

SP 1.1-1 Select Defect Data for Analysis
SP 1.2-1 Analyze Causes
SP 2.1-1 Implement the Action Proposals
SP 2.2-1 Evaluate the Effect of Changes
SP 2.3-1 Record Data
GP 1.1 Perform Base Practices
GP 2.1 Establish an Organizational Policy
GP 2.2 Plan the Process
GP 2.3 Provide Resources

Direct Artifact

Enter description, or select from drop-down list (with the ability to modify your selection)

Hyperlink for Direct

Hyperlink Caution

Indirect Artifact

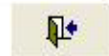
Hyperlink for Indirect

Affirmation

Save Artifact Information for next practice

Save

Cancel



Please note: Be sure to Save before exiting, or you will lose your last changes.

Appraisal Preparation and Collaboration

- Special feature

- The tool automatically displays a list of those specific practices that may have common work products (see next slide)
- By checking the check box marked “Save Artifact Information for next practice”, all user entries on the screen are preserved so they can be re-used without having to be re-entered

Project P1
P2
P3

for Organization Home

- Organizational Process Definition
- Organizational Process Focus
- Organizational Process Performance
- Organizational Training
- Process and Product Quality Assurance**
- Product Integration
- Project Monitoring and Control
- Project Planning
- Quantitative Project Management

- Practice
- SP 1.1-1 Objectively Evaluate Processes**
 - SP 1.2-1 Objectively Evaluate Work Products and Services
 - SP 2.1-1 Communicate and Ensure Resolution of Noncompliance Issues
 - SP 2.2-1 Establish Records
 - GP 1.1 Perform Base Practices
 - GP 2.1 Establish an Organizational Policy
 - GP 2.2 Plan the Process
 - GP 2.3 Provide Resources
 - GP 2.4 Assign Responsibility

Project []

Project []

Project []

Project []

Project []

Enter description, or select from drop-down list (with the ability to modify your selection)

Similar Practice(s) for PPQA - SP 1.1-1

- REQM SP 1.5-1 Corrective actions
- PPQA SP 1.2-1 Evaluation reports
- PPQA SP 1.2-1 Noncompliance reports
- PPQA SP 1.2-1 Corrective actions
- PPQA SP 2.1-1 Evaluation reports

NOTE: If the checkbox below is checked, this list will remain unchanged. To refresh or hide the list, first uncheck the checkbox then select a Practice.

Save Artifact Information for next practice

Appraisal Preparation and Collaboration *Reporting*

- Reports are available to show
 - the entire framework for reference
 - the appraisal artifacts to determine readiness for an appraisal
 - lists of interviewees and questions to ask them during the appraisal

Appraisal Execution

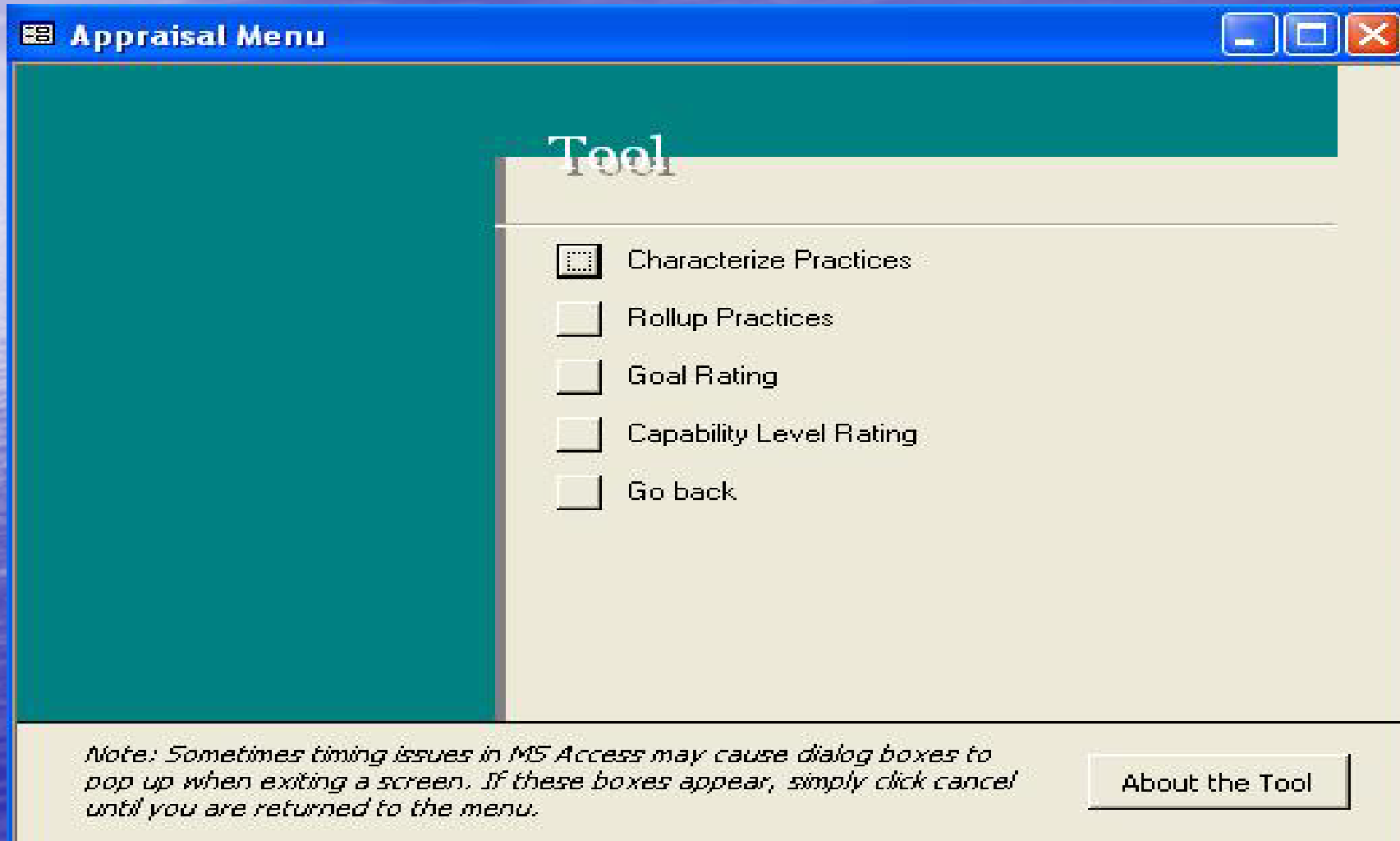
Appraisal Execution

- An appraisal involves
 - determining what people do
 - verifying that people do what they say they do
- The tool can be used during an appraisal and for storing appraisal results (NOTE: SCAMPI non-attribution requires special care be taken with data)

OR

- The tool also has a function to export data to the traditional PIID spreadsheet for appraisal execution (simple MS Excel macro is available that may be needed for restoring hyperlinks)

Appraisal Execution *Menu*



Appraisal Execution

Characterize Practices

- Decide whether the practice is fully implemented (FI), largely implemented (LI), partially implemented (PI) or not implemented (NI)
- Reach team consensus and select the corresponding entry from the next screen
- Optionally: enter observations that can later be exported as strengths or improvement opportunities

Practice Characterization

Observation

for Project P3

Process Area

- Project Monitoring and Control
- Project Planning
- Supplier Agreement Management

Date 8/9/2004 SCAMPI Target Level 3

Practice

- SP 1.1-1 Monitor Project Planning Parameters
- SP 1.2-1 Monitor Commitments
- SP 1.3-1 Monitor Project Risks
- SP 1.4-1 Monitor Data Management
- SP 1.5-1 Monitor Stakeholder Involvement
- SP 1.6-1 Conduct Progress Reviews
- SP 1.7-1 Conduct Milestone Reviews
- SP 2.1-1 Analyze Issues

Save

Please note: Be sure to Save each of your changes.

Direct Artifact status reports

Hyperlink for Direct Indirect Artifact docs/status_03-15-04.ppt

Hyperlink for Indirect Affirmation Ask P2 Manager about status reports

Appraisal Execution

Rollup characterizations

- If multiple projects are being appraised for an organization, practice characterizations need to be rolled up to obtain organizational level practice characterizations
 - The tool provides suggestions for rollups based on guidelines in place in July of 2003
- Reach team consensus and select the Rollup from the next screen

Practice Characterization Rollup for 200409-TST

Practice Rollup

- FI
- LI
- PI
- NI

LI

Suggested Rollup

Date 8/9/2004

SCAMPI

Target Level 3

for Organization Home

Projects

P2
P3

Save



Please note: Be sure to Save each of your changes.

Process Area

- Project Monitoring and Control
- Project Planning
- Supplier Agreement Management

Practice

- SP 1.1-1 Monitor Project Planning Parameters
- SP 1.2-1 Monitor Commitments
- SP 1.3-1 Monitor Project Risks
- SP 1.4-1 Monitor Data Management
- SP 1.5-1 Monitor Stakeholder Involvement
- SP 1.6-1 Conduct Progress Reviews
- SP 1.7-1 Conduct Milestone Reviews
- SP 2.1-1 Analyze Issues
- SP 2.2-1 Take Corrective Action

SP 1.1-1 Monitor Project Planning Parameters

LI

FI

Record: 1 of 1

Appraisal Execution

Rate Goals

- If all practices for a goal are fully implemented (FI) the goal is satisfied
- If all practices for a goal are fully or largely implemented (FI or LI), the team may rate the goal as satisfied
 - The tool does not offer suggestions during this phase of the appraisal
- Reach team consensus and select the Goal Rating from the next screen

Goal Rating for 200308-TST

Goal Rating

Satisfied
Unsatisfied

for Organization Home

Date

8/11/2003

SCAMPI

Target Level

3

and Projects

P1
P2
P3

Save



Please note: Be sure to Save each of your changes.

Process Area

- Configuration Management
- Measurement and Analysis
- Process and Product Quality Assurance
- Project Monitoring and Control
- Project Planning
- Requirements Management
- Supplier Agreement Management

Goal

- SG 1 Establish Baselines
- SG 2 Track and Control Changes
- SG 3 Establish Integrity
- GG 1 Achieve Specific Goals
- GG 2 Institutionalize a Managed Process
- GG 3 Institutionalize a Defined Process
- GG 4 Institutionalize a Quantitatively Managed Process
- GG 5 Institutionalize an Optimizing Process

SP 2.1-1 Track Change Requests

LI

SP 2.2-1 Control Configuration Items

FI

Appraisal Execution

Assign Capability Levels

- Select the Capability Level from the next screen

Capability Level for 200409-TST

- 0
- 1
- 2
- 3
- 4
- 5

for Organization Home
and Projects

Date 8/9/2004 SCAMPI Target Level 3

Save 

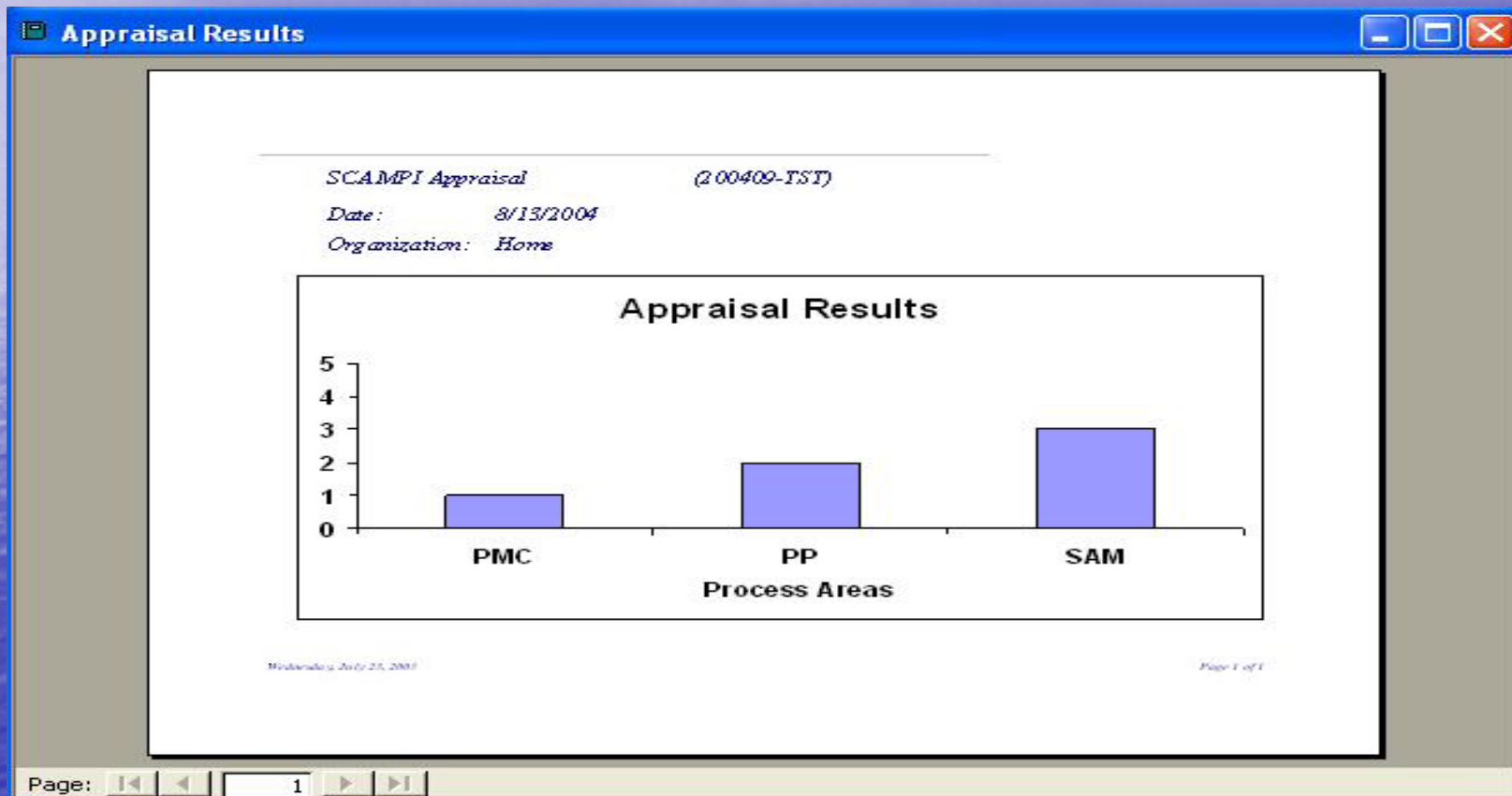
Please note: Be sure to Save each of your changes.

P2
P3

- Process Area
- Project Planning
 - Project Monitoring and Control
 - Supplier Agreement Management

SG 1 Establish Supplier Agreements	Satisfied
SG 2 Satisfy Supplier Agreements	Satisfied
GG 1 Achieve Specific Goals	Satisfied
GG 2 Institutionalize a Managed Process	Satisfied
GG 3 Institutionalize a Defined Process	Satisfied
GG 4 Institutionalize a Quantitatively Managed Process	
GG 5 Institutionalize an Optimizing Process	

Appraisal Execution *Report Results*



Tool Limitations and Workarounds

Tool Limitations and Workarounds

- Limitation
 - For practice characterization rollup, no more than three projects may be evaluated
- Workaround
 - If you have more than three projects, limit the appraisal to three

Tool Limitations and Workarounds

- Limitation

- Hyperlinks in the database (or exported to MS Excel) may not work if the database (or exported Excel spreadsheet) is moved to a new folder

- Workaround

- Store the database and exported spreadsheet at the root level of the directory structure
- Use absolute hyperlinks or http hyperlinks whenever possible

Tool Limitations and Workarounds

- Limitation
 - “Typical work products” in the model are all transferred into the tool as direct artifacts
 - Some “Typical work products” are really indirect artifacts
- Workaround
 - Modify the database tables as needed to reflect which “Typical work products” are indirect artifacts, AND/OR be aware of the SEI guidance on this topic

Obtaining the free* tool

** For Government-related use only
pending permission from the SEI for
public release*

Obtaining the tool

- Contact NASA SW Release Authority and complete the paperwork
 - Email: Bande.W.Young.1@gsfc.nasa.gov or young@pop500.gsfc.nasa.gov
- Contact me after you receive NASA approval and I will send you the tool
 - Email: Wesley.D.Sweetser@nasa.gov or WesleySweetser@netscape.net

Backup Slides

System requirements

- The tool was developed using Microsoft Access 2002 and Visual Basic for Applications (VBA). References required include the following:
 - VBA
 - MS Access 10.0 Object Library
 - OLE Automation
 - MS ActiveX Data Objects 2.1 Library
 - MS Windows Common Controls-2 6.0 (SP3) [if using MS Access 2000]
 - MS Excel 10.0 Object Library [MS Excel 9.0 if using Access 2000]

References

- Capability Maturity Model®Integration (CMMISM), Version 1.1 for Systems Engineering and Software Engineering (CMMI-SE/SW V1.1, CMMI-SE/SW/IPPD/SS V1.1, CMMI-SE/SW/IPPD V1.1) Continuous Representation
- CMMI Team Training for SCAMPI Appraisal at NASA Ames Research Center, June 2003

Acronyms

CMMI	Capability Maturity Model Integration
FI	Fully implemented
HTML	Hypertext markup language
HTTP	Hypertext transfer protocol
IPPD	Integrated Product and Process Development
LI	Largely implemented
MS	Microsoft
NI	Not implemented
PI	Partially implemented
PII	Practice Implementation Indicators
SCAMPI	Standard CMMI Appraisal Method for Process Improvement
SE	Systems Engineering
SEI	Software Engineering Institute
SS	Supplier Sourcing
SW	Software Engineering
VBA	Visual Basic for Applications