

**DMSMS Plan Builder**  
**15 Dec 05**

**Mr. Keith McLendon**

# **U.S. Army Materiel Command**





# Starting Right



© UFS, Inc.

**USAMC LOGSA--Supporting Warfighters Globally**

Title

Doc



# Motivation



- In preparing for battle I have always found that plans are useless, but planning is indispensable.
  - Dwight D. Eisenhower (1890 - 1969)



# Motivation



- **In preparing for battle I have always found that plans are useless, but planning is indispensable.**
  - Dwight D. Eisenhower (1890 - 1969)
- **A good plan, violently executed now, is better than a perfect plan next week.**
  - George S. Patton (1885 - 1945)



# Motivation



- **In preparing for battle I have always found that plans are useless, but planning is indispensable.**
  - Dwight D. Eisenhower (1890 - 1969)
  
- **A good plan, violently executed now, is better than a perfect plan next week.**
  - George S. Patton (1885 - 1945)
  
- **Adm. Painter: What's his plan?**  
**Jack Ryan: His plan?**  
**Adm. Painter: Russians don't take a dump, son, without a plan.**



# Agenda



- **What is LOGPARS?**
- **LOGPARS history**
- **How LOGPARS works**
- **Features**
- **Benefits**
- **DMSMS Road Ahead**
- **Questions**





# What is LOGPARS?



**A web-enabled expert system assistant for:**

- Preparing program planning documents





# What is LOGPARS?



**A web-enabled expert system assistant for:**

- Preparing program planning documents
- Updating program plans
- Evaluating programs







# What is LOGPARS?



**A web-enabled expert system assistant for:**

- Preparing program planning documents
- Updating program plans
- Evaluating programs
- Making decisions





# What is LOGPARS?



**A web-enabled expert system assistant for:**

- Preparing program planning documents
- Updating program plans
- Evaluating programs
- Making decisions
- Obtaining guidance





# What is LOGPARS?



**A web-enabled expert system assistant for:**

- Preparing program planning documents
- Updating program plans





# What is LOGPARS?



**A web-enabled expert system assistant for:**

- Preparing program planning documents
- Updating program plans
- Evaluating programs
- Making decisions
- Obtaining guidance
- Enforcing Planning Process





# Mental Break



- It's a small world, but I wouldn't want to paint it.
  - Steven Wright





# Why LOGPARS?



## “A Brief History”

### 1984 GAO Study

“... [the Army has the best ILS policy, but the worst execution.] ...”





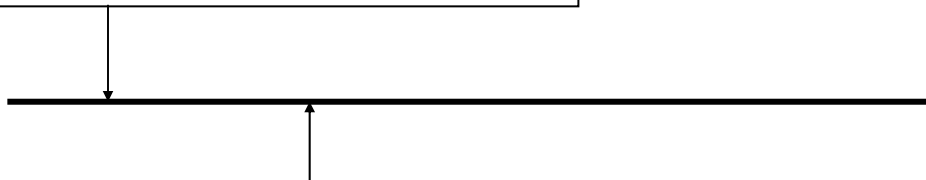
# Why LOGPARS?



## “A Brief History”

### 1984 GAO Study

“... [the Army has the best ILS policy, but the worst execution.] ...”



### 1989 LOGPARS Version 1

- Began to institutionalize ILS policy in an ILS Planning Knowledge Base.
- Generated ILSP and Warranty information based on current regulations and policy.



# Why LOGPARS?



## “A Brief History”

### 1984 GAO Study

“... [the Army has the best ILS policy, but the worst execution.] ...”

### 1989 - 1994 Continuous Enhancements

- New documents were added: SOW, MFP, Transportability Report, etc.
- Adapted for other services: Navy, Air Force, Marine Corps, FAA, etc.
- User feedback

### 1989 LOGPARS Version 1

- Began to institutionalize ILS policy in an ILS Planning Knowledge Base.
- Generated ILSP and Warranty information based on current regulations and policy.





# Why LOGPARS?



## “A Brief History”

### 1994 LOGPARS for Windows

- Solved many system limitation problems.
- Project development split into tools focus (DOCSHELL) and knowledge base focus (LOGPARS).





# Why LOGPARS?



## “A Brief History”

### 1994 LOGPARS for Windows

- Solved many system limitation problems.
- Project development split into tools focus (DOCSHELL) and knowledge base focus (LOGPARS).

### 1994 - 1998 Continuous Enhancements

- LOGPARS97 and LOGPARS98 released containing much needed “Acquisition Reform” guidance.
- DOCSHELL solutions initiated by Australia, Department of Agriculture, and SARDA.



# Why LOGPARS?



## “A Brief History”

### 1994 LOGPARS for Windows

- Solved many system limitation problems.
- Project development split into tools focus (DOCSHELL) and knowledge base focus (LOGPARS).

### 1994 - 1998 Continuous Enhancements

- LOGPARS97 and LOGPARS98 released containing much needed “Acquisition Reform” guidance.
- DOCSHELL solutions initiated by Australia, Department of Agriculture, and SARDA.

### Now

- LOGPARS continues to be enhanced to accommodate the latest regulations, policy and procedures that exist in the area of Life Cycle planning.
- DOCSHELL leverages the latest software application technologies. (e.g. Java, HTML)



# Random Mental Vacation



- Much of the social history of the Western world over the past three decades has involved replacing what worked with what sounded good.
  - Thomas Sowell

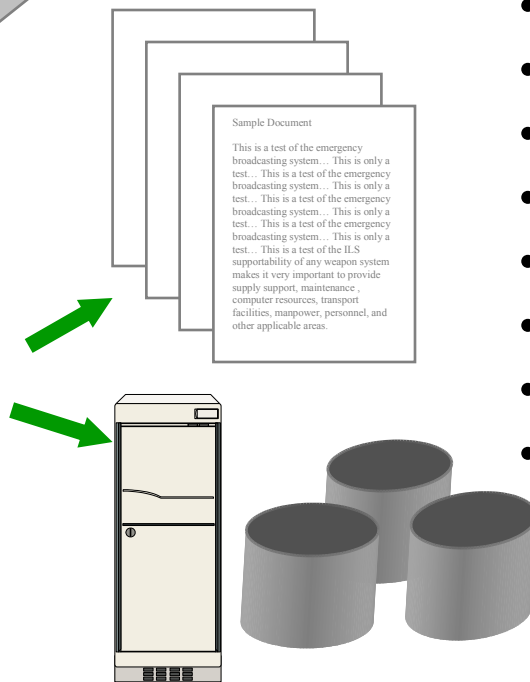
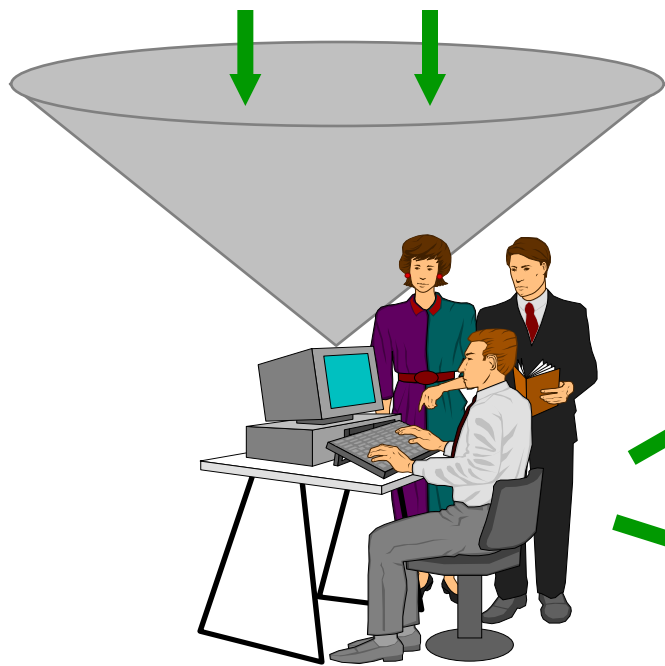




# How does it work?



**Latest Policy  
Training Information  
Lessons Learned  
Expert Knowledge/Experience**



## **LOGPARS Integrated Documents**

- **Acquisition Strategy**
- **Supportability Strategy**
- **PBL Strategy**
- **Materiel Fielding Plan**
- **Provisioning Plan**
- **Performance Based Agreement**
- **ILS Statement of Work**
- **Transportability Report**
- **Supportability Assessment**
- **And more...**

**USAMC LOGSA--Supporting Warfighters Globally**



# Features



- **Alternative document authoring process**
  - Provides a “ground-up” approach to authoring planning documents as opposed to a “Copy-Paste” approach.





# Features



- **Alternative document authoring process**
  - Provides a “ground-up” approach to authoring planning documents as opposed to a “Copy-Paste” approach.
- **Simple navigation based on document outline**





# Features



- **Alternative document authoring process**
  - Provides a “ground-up” approach to authoring planning documents as opposed to a “Copy-Paste” approach.
- **Simple navigation based on document outline**
- **Flexible interview-style question types**







# Features



- **Alternative document authoring process**
  - Provides a “ground-up” approach to authoring planning documents as opposed to a “Copy-Paste” approach.
- **Simple navigation based on document outline**
- **Flexible interview-style question types**
- **Supports multi-user/team efforts**





# Features



- **Alternative document authoring process**
  - Provides a “ground-up” approach to authoring planning documents as opposed to a “Copy-Paste” approach.
- **Simple navigation based on document outline**
- **Flexible interview-style question types**
- **Supports multi-user/team efforts**
- **Automatic data sharing**





# Features



- **Alternative document authoring process**
  - Provides a “ground-up” approach to authoring planning documents as opposed to a “Copy-Paste” approach.
- **Simple navigation based on document outline**
- **Flexible interview-style question types**
- **Supports multi-user/team efforts**
- **Automatic data sharing**
- **Continuous consistency checks**





# Features



- **Alternative document authoring process**
  - Provides a “ground-up” approach to authoring planning documents as opposed to a “Copy-Paste” approach.
- **Simple navigation based on document outline**
- **Flexible interview-style question types**
- **Supports multi-user/team efforts**
- **Automatic data sharing**
- **Continuous consistency checks**
- **Reviewer commenting capability**





# Features



- **Alternative document authoring process**
  - Provides a “ground-up” approach to authoring planning documents as opposed to a “Copy-Paste” approach.
- **Simple navigation based on document outline**
- **Flexible interview-style question types**
- **Supports multi-user/team efforts**
- **Automatic data sharing**
- **Continuous consistency checks**
- **Reviewer commenting capability**
- **Ensures an Expert planning process**





# Random Mental Vacation



- Time sneaks up on you like a windshield on a bug.

– Jon Lithgow





# LOGPARS Benefits



- Reduced time to prepare plans



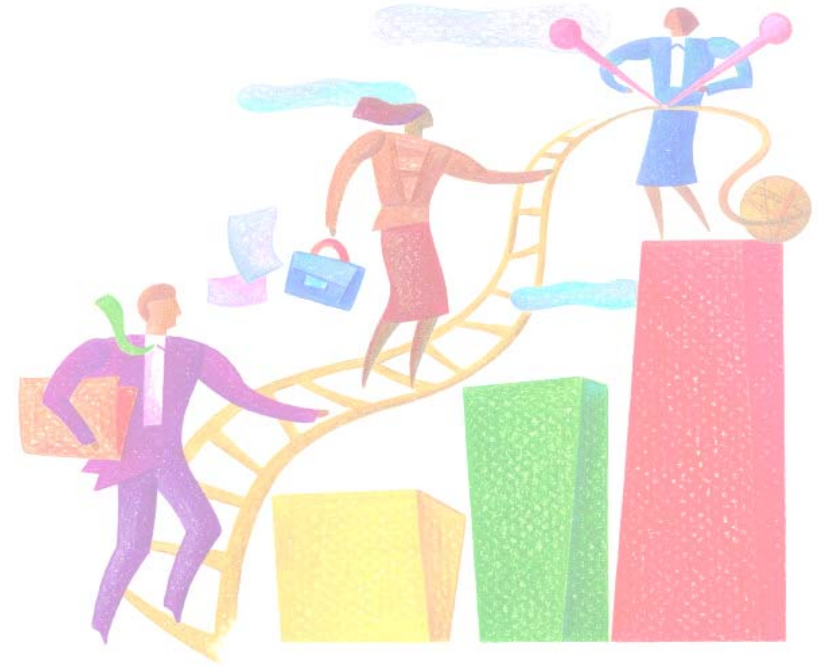
**USAMC LOGSA--Supporting Warfighters Globally**



# LOGPARS Benefits



- Reduced time to prepare plans
- High quality planning decisions and documents



**USAMC LOGSA--Supporting Warfighters Globally**





# LOGPARS Benefits



- Reduced time to prepare plans
- High quality planning decisions and documents
- Tailored for individual program strategies
  - Service issues, Acq Phase, Type Acquisition





# LOGPARS Benefits



- Reduced time to prepare plans
- High quality planning decisions and documents
- Tailored for individual program strategies
  - Service issues, Acq Phase, Type Acquisition
- Supports electronic staffing and review





# LOGPARS Benefits



- Reduced time to prepare plans
- High quality planning decisions and documents
- Tailored for individual program strategies
  - Service issues, Acq Phase, Type Acquisition
- Supports electronic staffing and review
- Training tool (DAU and on-the-job)





# LOGPARS Benefits



- Reduced time to prepare plans
- High quality planning decisions and documents
- Tailored for individual program strategies
  - Service issues, Acq Phase, Type Acquisition
- Supports electronic staffing and review
- Training tool (DAU and on-the-job)
- Minimizes costly requirements omission/duplication





# LOGPARS Benefits



- Reduced time to prepare plans
- High quality planning decisions and documents
- Tailored for individual program strategies
  - Service issues, Acq Phase, Type Acquisition
- Supports electronic staffing and review
- Training tool (DAU and on-the-job)
- Minimizes costly requirements omission/duplication
- Easy to expand, enhance, & update the Knowledge Base



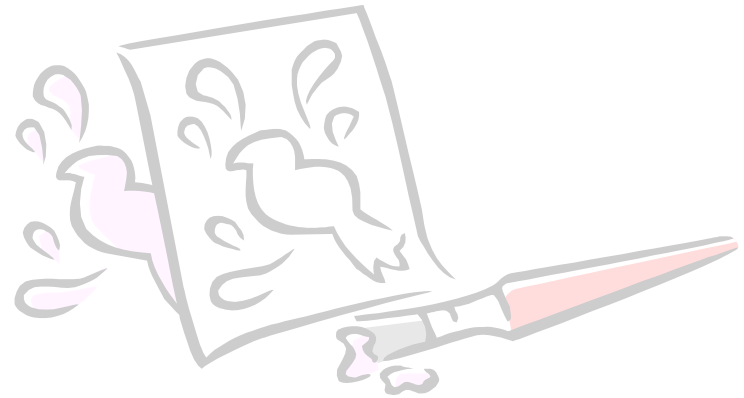
**USAMC LOGSA--Supporting Warfighters Globally**



# Exceeds Template Capabilities



- Consistency warnings



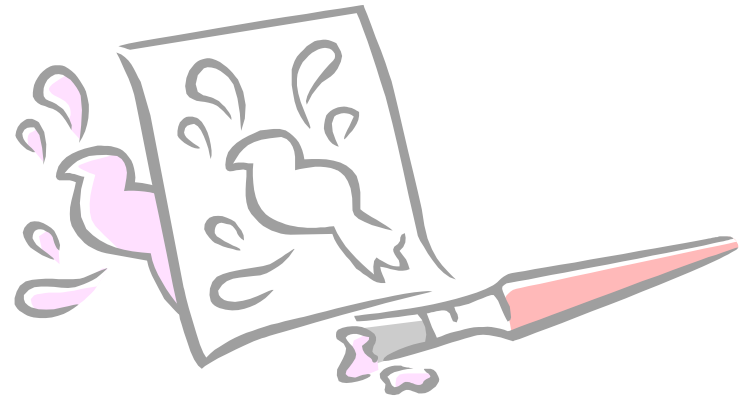
USAMC LOGSA--Supporting Warfighters Globally



# Exceeds Template Capabilities



- Consistency warnings
- Dynamic answer lists

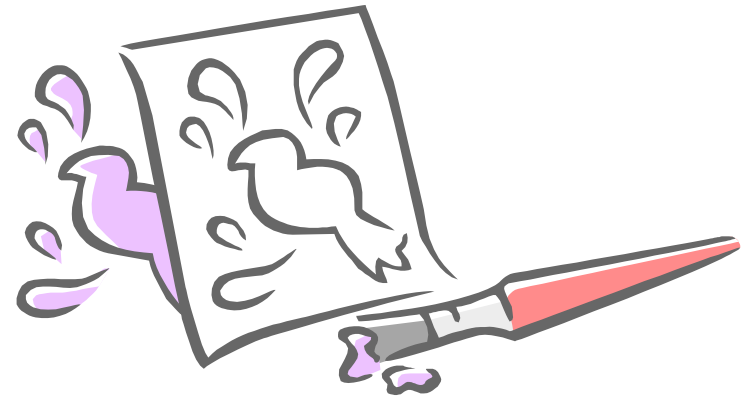




# Exceeds Template Capabilities



- Consistency warnings
- Dynamic answer lists
- Dynamic text insertion



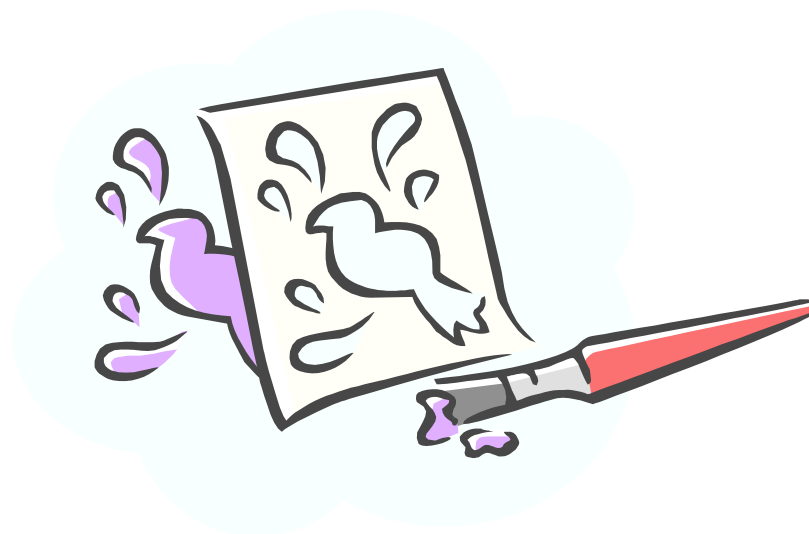




# Exceeds Template Capabilities



- Consistency warnings
- Dynamic answer lists
- Dynamic text insertion
- Extensive derivation logic

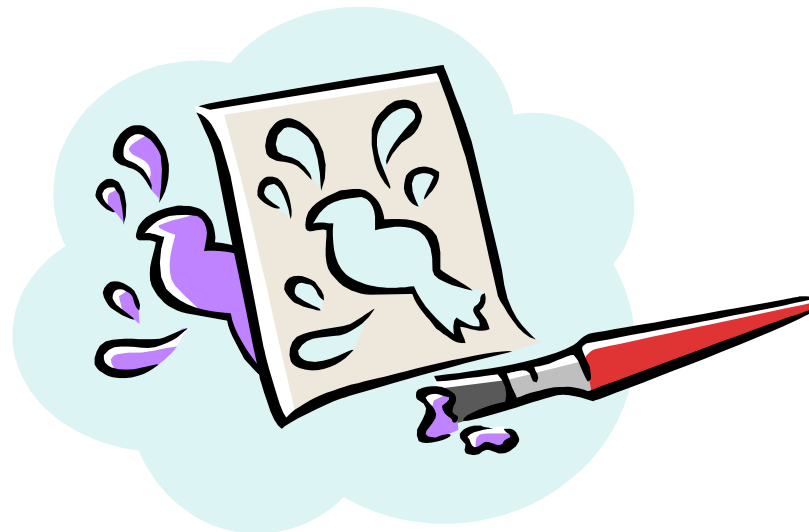




# Exceeds Template Capabilities



- **Consistency warnings**
- **Dynamic answer lists**
- **Dynamic text insertion**
- **Extensive derivation logic**
- **Accommodates intricate conditional logic**





# Powerful Capability



- **Model and improve your business processes**



**USAMC LOGSA--Supporting Warfighters Globally**



# Powerful Capability



- **Model and improve your business processes**
- **Develop your modules locally**
  - Unlimited number of users
  - Unlimited number of modules
  - Apply to any functional area
  - No programming experience required





# Powerful Capability



- **Model and improve your business processes**
- **Develop your modules locally**
  - Unlimited number of users
  - Unlimited number of modules
  - Apply to any functional area
  - No programming experience required
- **Easy to enhance and modify**

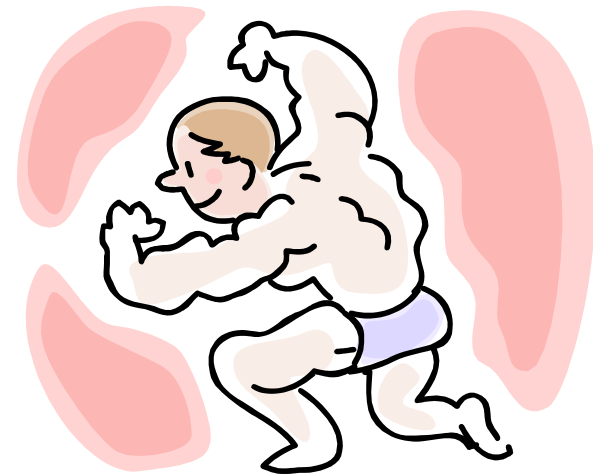




# Powerful Capability



- **Model and improve your business processes**
- **Develop your modules locally**
  - Unlimited number of users
  - Unlimited number of modules
  - Apply to any functional area
  - No programming experience required
- **Easy to enhance and modify**
- **Integrated Data Environment**

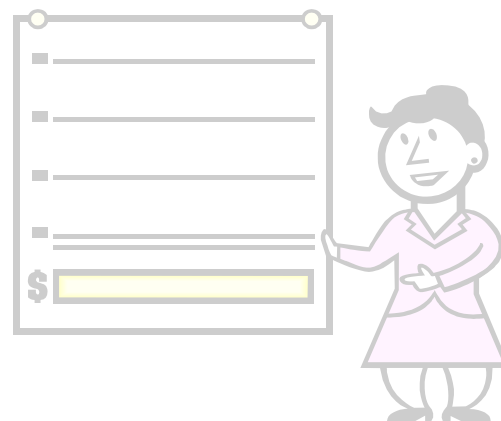




# Bottom Line



- **Proven technology**
  - LOGPARS
  - Other DOCSHELL applications

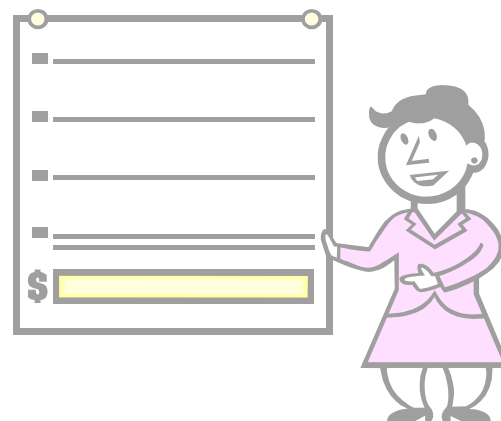




# Bottom Line



- **Proven technology**
  - LOGPARS
  - Other DOCSHELL applications
- **Web-based software**



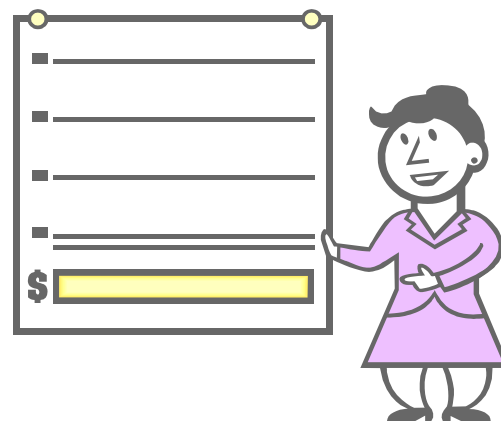




# Bottom Line



- **Proven technology**
  - LOGPARS
  - Other DOCSHELL applications
- **Web-based software**
- **No software licenses**

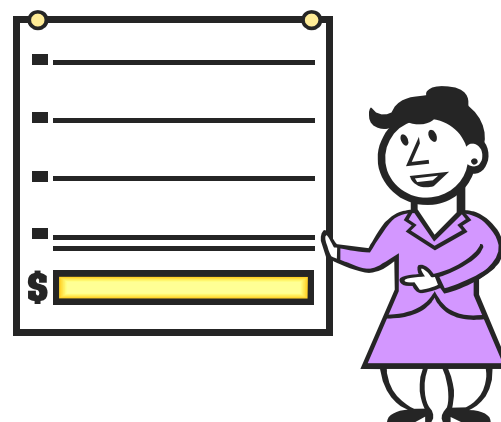




# Bottom Line



- **Proven technology**
  - LOGPARS
  - Other DOCSHELL applications
- **Web-based software**
- **No software licenses**
- **Minimal cost to customize**

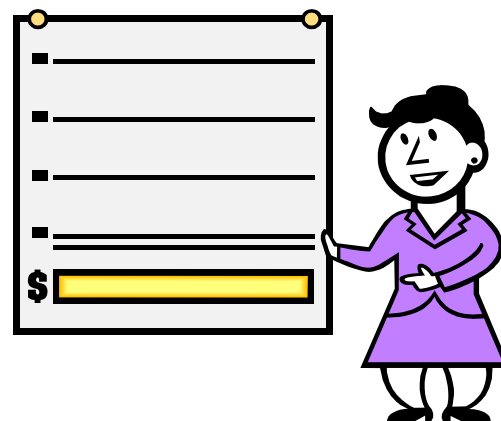




# Bottom Line

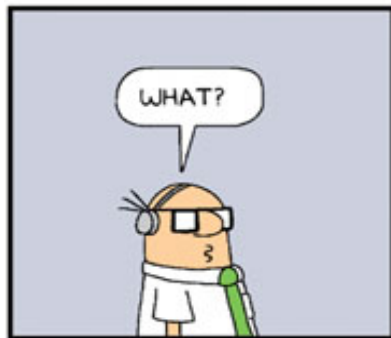


- **Proven technology**
  - LOGPARS
  - Other DOCSHELL applications
- **Web-based software**
- **No software licenses**
- **Minimal cost to customize**
- **Continuous state-of-the-art improvements**





# Random Humor Break



© Scott Adams, Inc./Dist. by UFS, Inc.

**USAMC LOGSA--Supporting Warfighters Globally**



# DMSMS Road Ahead



- **Brainstorming Session 20 Sep 05**
- **Working Group Approval**
- **Development contractor on contract for work**
- **Train development contractor**
- **Identify Experts**
- **Knowledge Engineering**
- **Document Development**
- **Test, Update, Test cycle**





# Work So Far



- **20 Sep 05 Brainstorming session**
  - Initial Outline
  - Initial Questions





# Work So Far



- **20 Sep 05 Brainstorming session**
  - Initial Outline
  - Initial Questions
- **Working Group approval**
  - Mostly...





# Train Developers



- 16 Dec 05
  - Friday after workshop



**USAMC LOGSA--Supporting Warfighters Globally**





# Train Developers



- **16 Dec 05**
  - Friday after workshop
- **Continuous help provided**





# Knowledge Engineering



- **Identify experts**
  - Working group provided
  - Start with same group from brainstorming session





# Knowledge Engineering



- **Identify experts**
  - Working group provided
  - Start with same group from brainstorming session
  
- **Interview experts**
  - Onsite initially
  - Follow up by telephone or VTC





# Document Design



- Identify major and minor elements
  - By Service
  - By Acquisition phase
  - By Acquisition Type
    - NDI, Developmental, ...





# Document Design



- **Identify major and minor elements**
  - By Service
  - By Acquisition phase
  - By Acquisition Type
    - NDI, Developmental, ...
- **Flowchart logic paths and possible text outcomes**

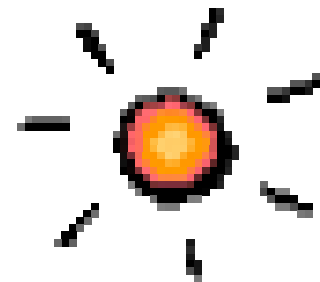




# Document Development



- Code questions into Data Element Editor
- Code document logic and output text into Document Editor





# Test, Update, Test Cycle



- **Alfa Test**
  - Subject Matter Experts





# Test, Update, Test Cycle



- **Alfa Test**
  - Subject Matter Experts
  
- **Refine**
  - Questions, document logic, derivation rules based on test







# Test, Update, Test Cycle



- **Alfa Test**
  - Subject Matter Experts
- **Refine**
  - Questions, document logic, derivation rules based on test
- **Beta Test**
  - Larger group, DMSMS community,  
...





# Test, Update, Test Cycle



- **Alfa Test**
  - Subject Matter Experts
  
- **Refine**
  - Questions, document logic, derivation rules based on test
  
- **Beta Test**
  - Larger group, DMSMS community, ...
  
- **Refine**
  - Questions, document logic, derivation rules based on test

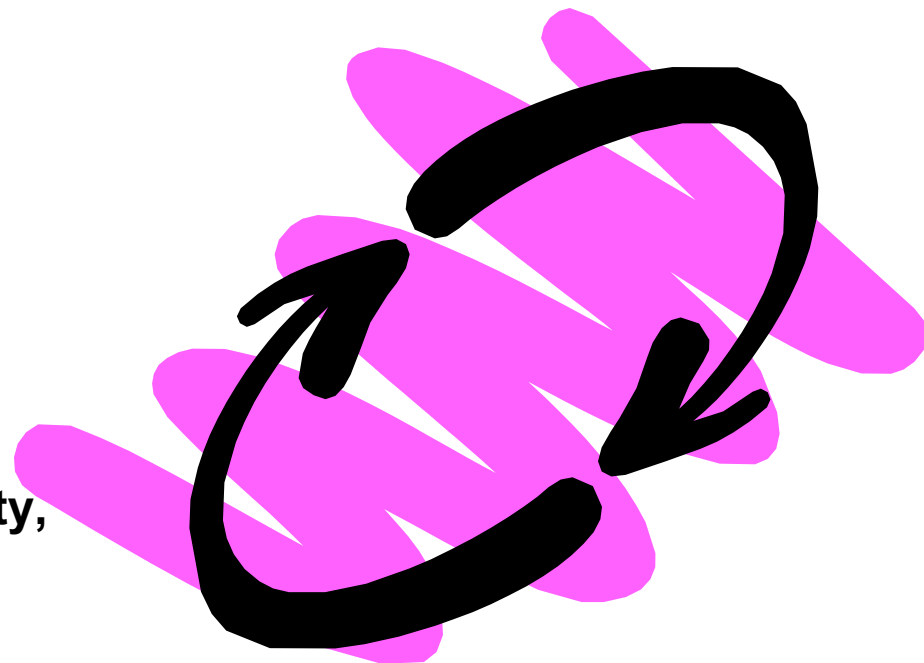




# Test, Update, Test Cycle



- **Alfa Test**
  - Subject Matter Experts
- **Refine**
  - Questions, document logic, derivation rules based on test
- **Beta Test**
  - Larger group, DMSMS community, ...
- **Refine**
  - Questions, document logic, derivation rules based on test
- **Release**





# Post Fielding -- Sustainment



- If it is not supported it will eventually not be used
  - Update knowledge base to reflect new policy
  - Update knowledge base to reflect new experience





# Post Fielding -- Sustainment



- **If it is not supported it will eventually not be used**
  - Update knowledge base to reflect new policy
  - Update knowledge base to reflect new experience
- **Two support options**
  - **Option one**
    - Central funding and access to SMEs from each service
  - **Option two**
    - Service funding and access to SMEs from each service





# Post Fielding -- Sustainment



- **If it is not supported it will eventually not be used**
  - Update knowledge base to reflect new policy
  - Update knowledge base to reflect new experience
- **Two support options**
  - **Option one**
    - Central funding and access to SMEs from each service
  - **Option two**
    - Service funding and access to SMEs from each service
- **Bottom line**
  - Must be updated to be meaningful
  - Remember Harvard Graphics, Lotus 1-2-3, Wordstar

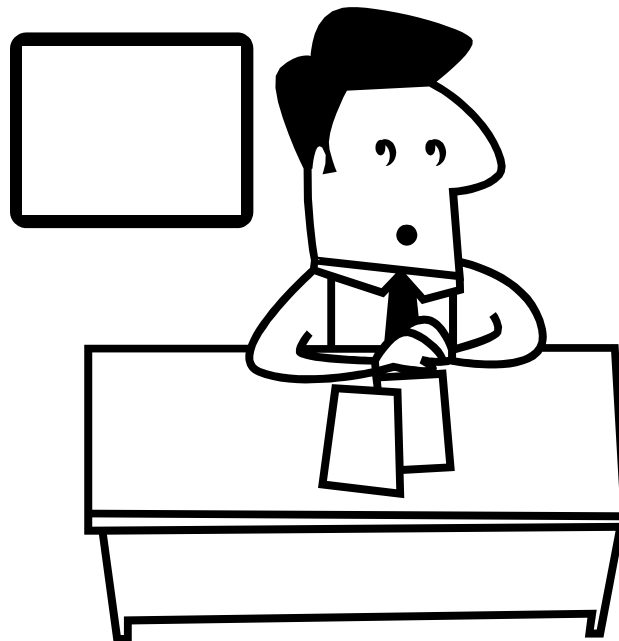




# Summary



- It helps enforce policy in the planning phase





# Summary



- It helps enforce policy in the planning phase
- It is supported







# Summary



- It helps enforce policy in the planning phase
- It is supported
- It is adaptable





# Summary

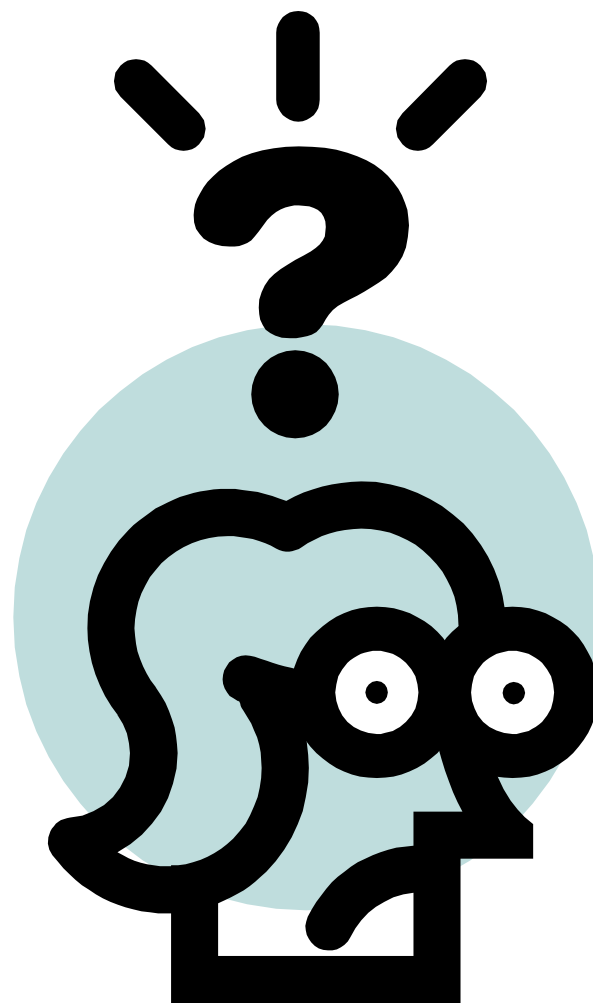


- It helps enforce policy in the planning phase
- It is supported
- It is adaptable
- It helps enforce policy in the planning phase





# Questions ?



**USAMC LOGSA--Supporting Warfighters Globally**