


Approved for Public Release, Distribution Unlimited, Reviewed by ATEC PAO (April 2005)



***ATEC UPDATE TO
NDIA***

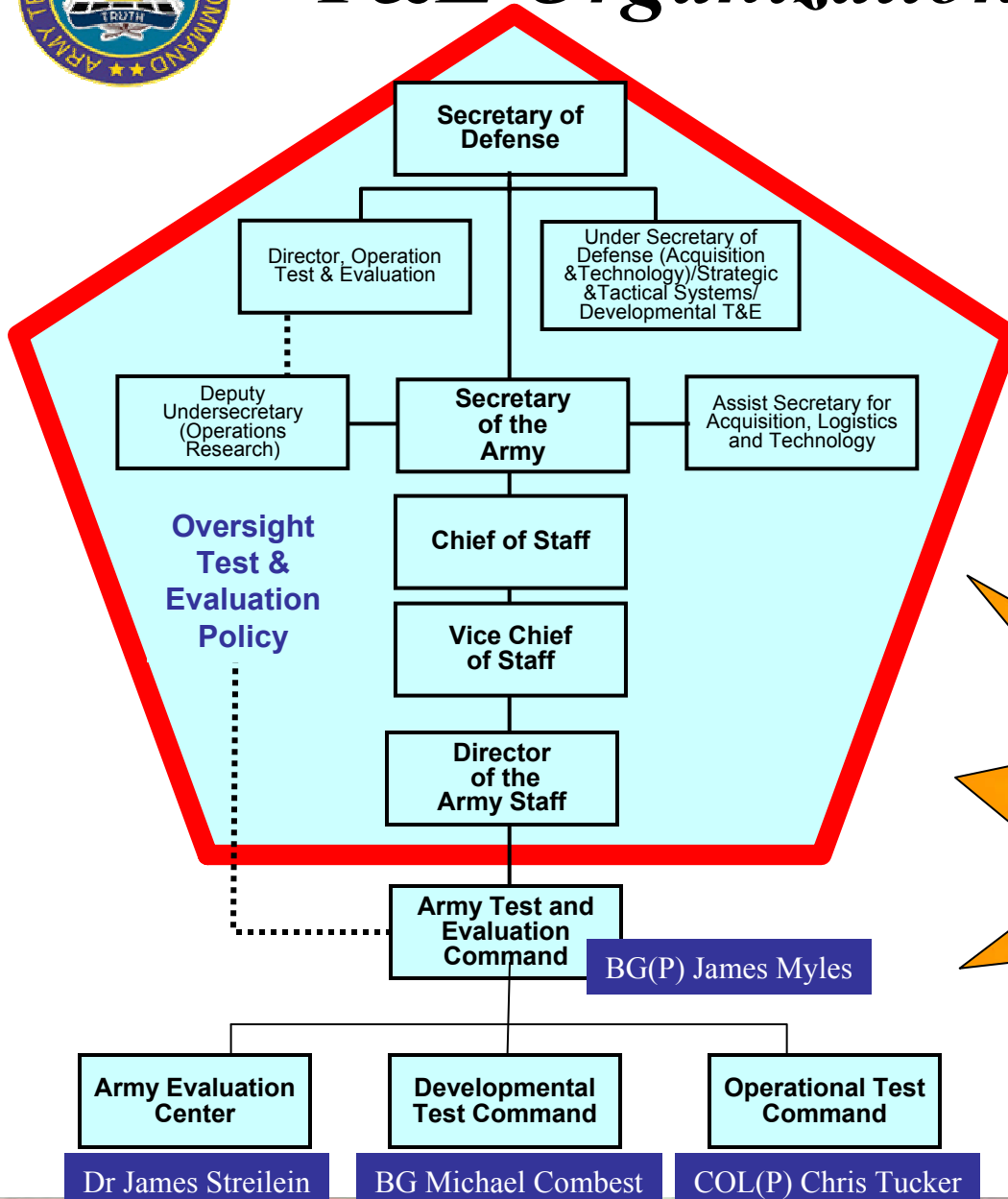
27 April 2005

Presented by:

BG(P) James R. Myles



T&E Organizational Structure



Mission: ATEC plans, conducts and integrates developmental testing, independent operational testing, independent evaluations, assessments and experiments *in order to provide essential information to decision makers*

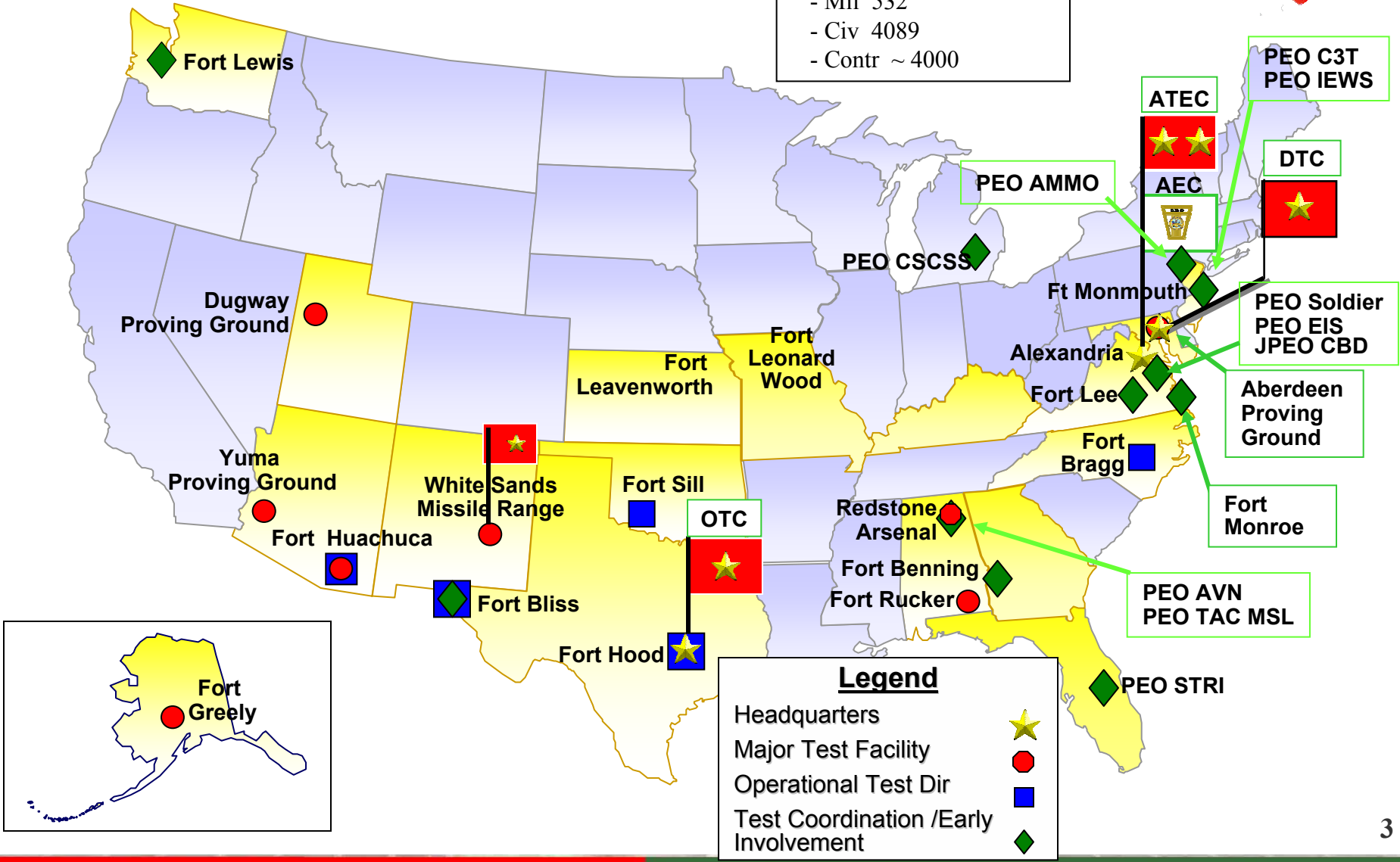
Required by OMB & OSD to be Independent



Where We Are



Total Strength ~ 8621
 - Mil 532
 - Civ 4089
 - Contr ~ 4000



Legend

- Headquarters
- Major Test Facility
- Operational Test Dir
- Test Coordination / Early Involvement

PEO C3T
PEO IEWS

ATEC

DTC

AEC

PEO Soldier
PEO EIS
JPEO CBD

Aberdeen Proving Ground

Fort Monroe

PEO AVN
PEO TAC MSL



The Army's T&E is Unique



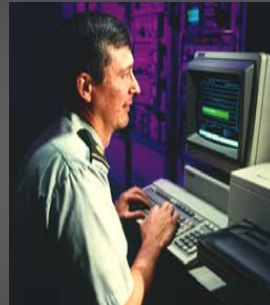
ATEC

DTC



Developmental Testing
*engineering type tests conducted
under controlled conditions*

AEC



Evaluation
*independent assessment of all
testing and simulation*

OTC



Operational Testing
*testing conducted using real
soldiers in simulated combat*

***ATEC integrates
developmental and
operational testing***



ATEC T&E Philosophy

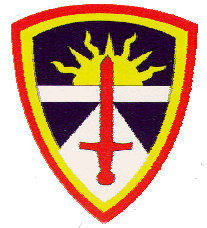


- Testing is part of acquisition process
- Two Fundamental Missions
 - Make system better (test-fix-test)
 - Provide Info to Decision Makers



- Does it Work...How do I know?
- Evaluation in Depth:
 - Platform → System of Systems → Unit Mission
- No Pass/Fail → Capabilities and Limitations

Good Enough ≠ Anything will do



Where are we headed

- **OTs with fewer troops—
tougher and shorter**
- **Rapid Acquisition: Spiral
Development, DT/OTs,...**
- **System of systems T&E**
- **Support to War is the norm**
- **OTs During Major Training
Events (NTC, JRTC,...)**





GWOT -- What is ATEC Doing About It



- War Support
 - Early Involvement with PMs & REF
 - Focus on performance in the AOR
 - Soldiers in DT / Limited User Testing
 - Respond to Warfighter!
 - Up-Armor Vehicles, Slat Armor, Stryker, ECMD, Robotics,..
 - Deploy ATEC Assessment Team in Theater
- Safety Confirmations
- Capabilities and Limitations Report
 - For the Commander
 - What do we know (Cap and Limits)
 - What don't we know
 - Safety, C/L, Training, Supportability and Accountability



Back-up Slides



Additional Thoughts

- **NOT YOUR DAD'S ATEC**
 - LIKE THE ARMY, ATEC STANCE AND BALANCE HAS CHANGED
 - FOCUS IS GWOT AND SOLDIERS IN HARMS WAY TODAY
 - TIMELINES HAVE SHRUNK TO SUPPORT RAPID ACQUISITION...STANDARDS HAVE NOT!
 - DATA VOIDS ARE FILLED WITH OUR EXPERIENCE AND BEST MILITARY JUDGEMENT
- **WE TEST-FIX-TEST AND PROVIDE INFO TO OUR SENIOR LEADERS TO MAKE DECISIONS**
- **WE ARE NOT SEPARATE FROM THE ACQUISITION COMMUNITY**
- **GET US INVOLVED EARLY**
- **WE DO DT/OT**
 - UNDERSTAND THE SUBTLETIES...WILL LOOK AT SOMETHING BEFORE IT IS READY...WE KNOW THE DIFFERENCE.
 - BECAUSE WE SEE THAT IT WORKS IN DT DOESN'T MEAN IT WORKS WITH SOLDI
- **LOGISTICS, TRAINING, ACCOUNTABILITY OF THE SYSTEMS ARE SHOWSTOPPERS FOR OUR SOLDIERS.**
 - LACK OF TRAINING AND LOGISTICS PROVIDES BAD REPUTATION FOR THE SYSTEM...HARD TO REMOVE THE STIGMA
- **NDAA 03**
- **PUT THE SOLDIER FIRST AND YOU ARE NEVER WRONG**
- **MOMS AND DADS OF AMERICA HAVE EXPECTATIONS**
 - THAT THEIR SON AND DAUGHTER RETURN HOME TO THEIR FAMILY
 - THAT THEIR SOLDIER HAS THE BEST EQUIPMENT ON THE FACE OF THIS EARTH
 - AND, THAT WHEN NEEDED, IT WILL WORK...THAT IT WILL WORK