

# SpecsIntact Editor

2005 Tri-Service Infrastructure Conference

Presented by: Steven Freitas

For

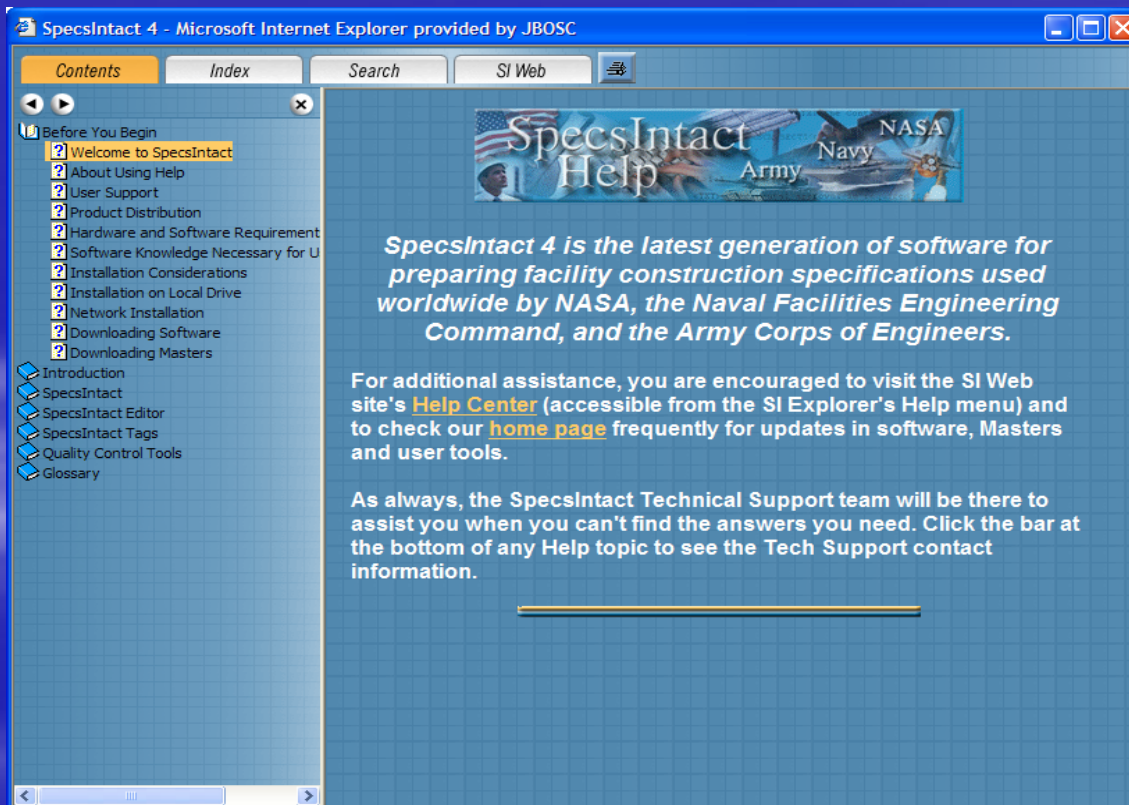
SpecsIntact

# Overview

- Help Menu
- Reference Wizard
- MasterFormat™ 2004

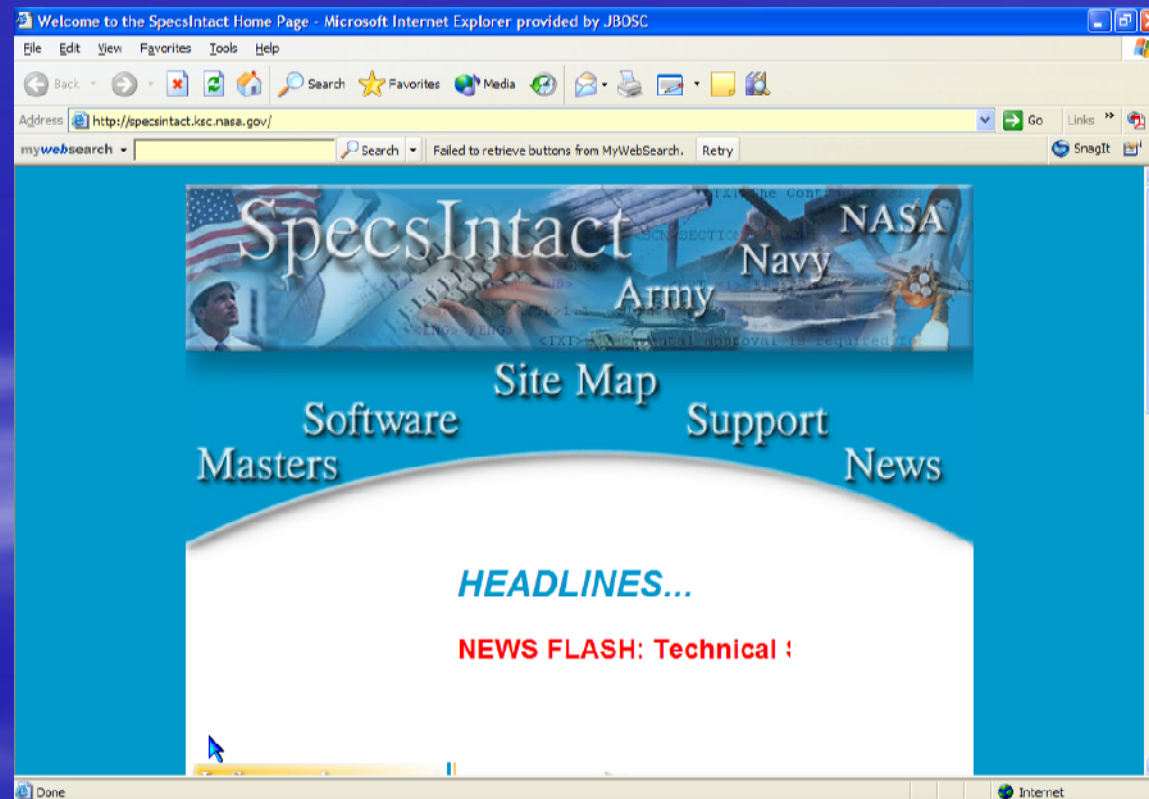
# Improved Help Menu

- Provides the following Options
  - Web Help



# Improved Help Menu

- Provides the following Options
  - Web Site



# Improved Help Menu

- Provides the following Options
  - Web Help Center

Sally Spector



Featuring



# Help Menu

- Provides the following Options
  - Quick Tours

Featuring



# Help Menu

- Provides the following Options
  - Knowledge Base



The screenshot displays a web-based help menu interface. At the top, there are navigation tabs: 'Contents' (highlighted), 'Index', 'Search', and 'Home'. Below these tabs is a left-hand navigation pane with a tree view. The tree view is expanded to show 'FAQs' and 'Troubleshooting'. Under 'FAQs', there are several items with question mark icons, including 'Upgrading to SpecsIntact 4', 'WordSpec', 'Sections 01330 and 01420 Added to...', 'Downloading Masters', 'Formatting Numbers', 'Using Symbols', 'Printing a Submittal Register', 'Printing Reconciled Submittal or Refer', 'Correcting Reference Title Discrepanc', and 'Using Address Verification Report Res'. Under 'Troubleshooting', there are 'Tips for Using SI Tech Support', 'Printing the Submittal Register with P', and 'Printing the Submittal Register with Di'. Below these are 'Release Notes' and 'Technical Notes'. The main content area has a yellow background and features the title 'SI Knowledge Base' in a large, stylized font. Below the title is a horizontal line, followed by the text 'FAQS', 'TROUBLESHOOTING', 'RELEASE NOTES', and 'TECH NOTES' in a bold, blue, sans-serif font. On the left side of the main content area, there is a small image of a rocket launch.



SI Editor's

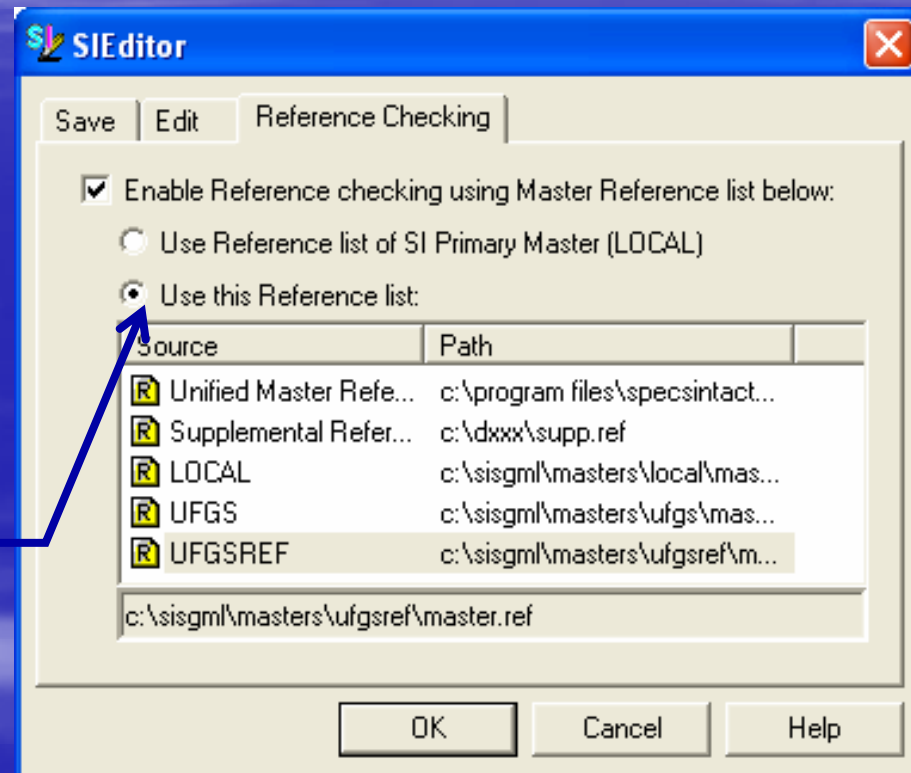
Reference Wizard



# Reference Wizard

**Begin By**

Selecting the  
Master Reference  
List of your choice



# Reference Wizard

Select one of the tags to launch the Reference Wizard

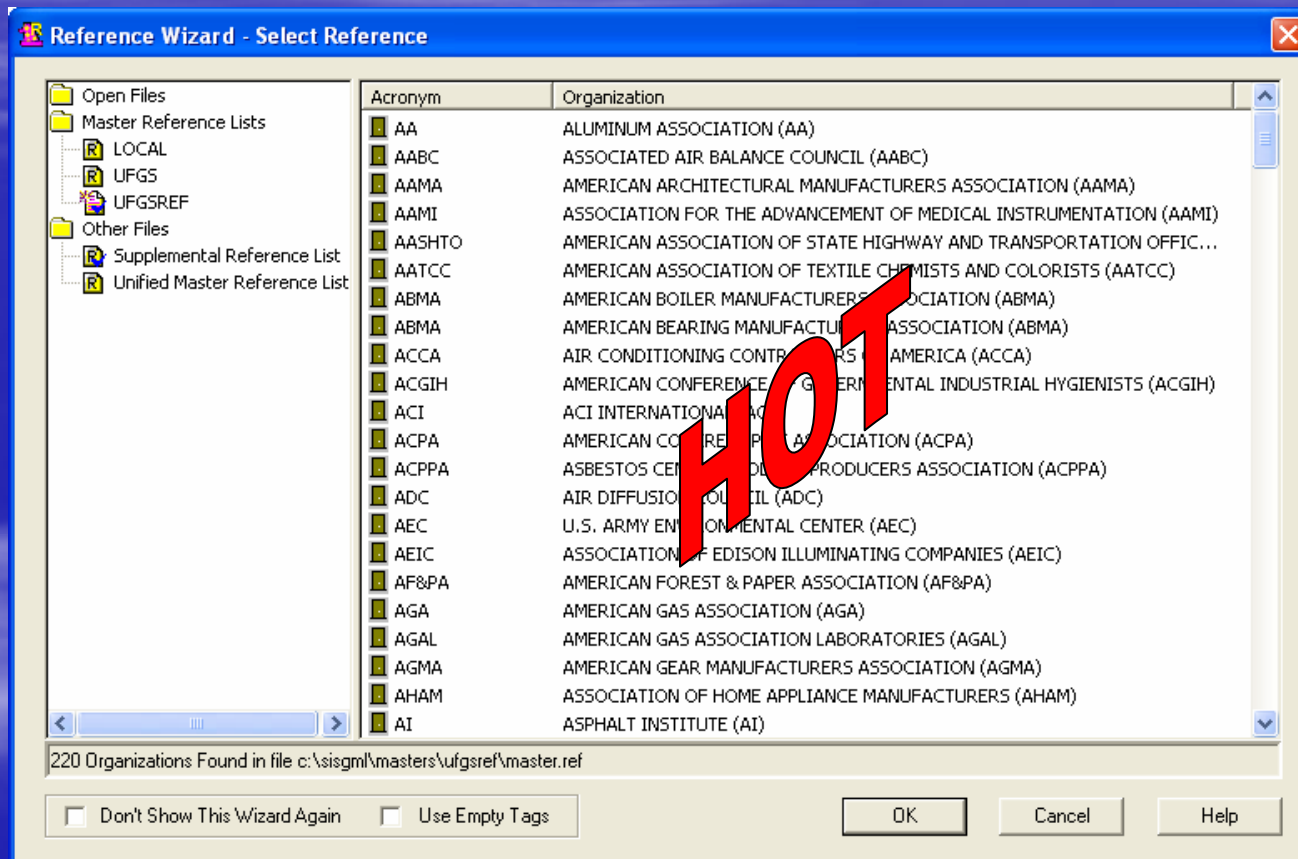
REF **RID** RTL ORG

You get Everything!

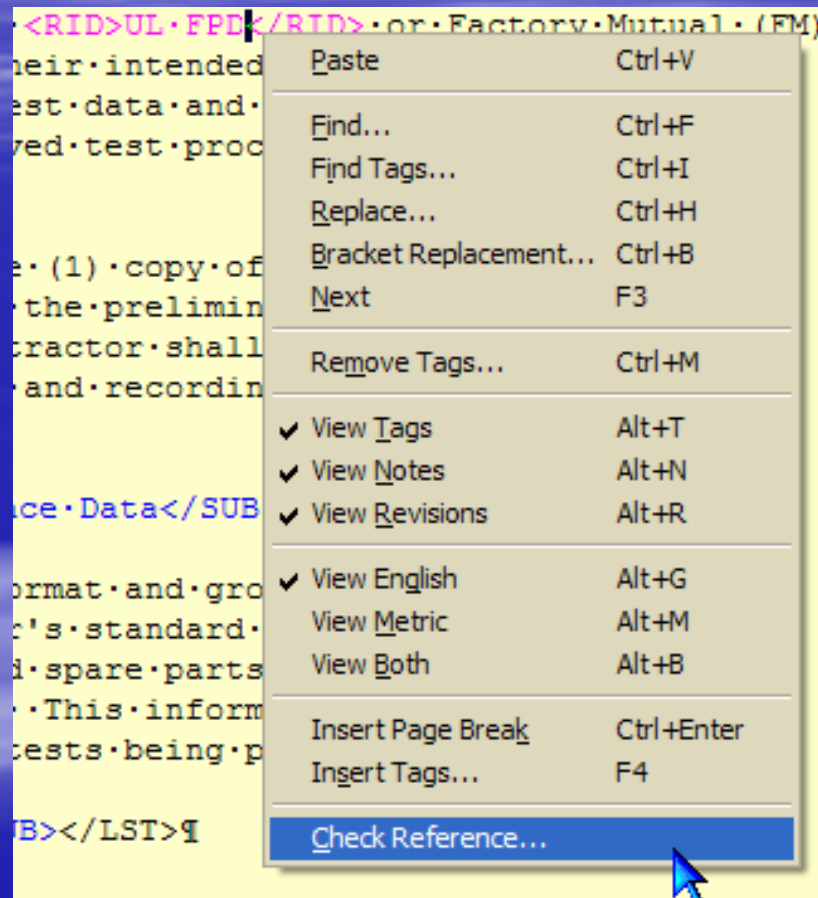
AMERICAN SOCIETY OF SANITARY ENGINEERING (ASSE)

<b>ASSE 1009</b>	(1990) Commercial Food Waste Grinder Units
<b>ASSE 1018</b>	(2001) Trap Seal Primer Valves, Water Supply Fed
<b>ASSE 5000</b>	(1998) Professional Qualification Standard for Backflow Prevention Assembly Testers, Repairers and Surveyors

# Reference Wizard



# Reference Wizard



Check References

# Reference Wizard

Check References

ASTM B 194

The Master Reference Title and Organization shown differ from the Reference Title and Organization in the Reference Article of this Section.

Reference in UFGSREF Master Reference List:

Organization: ASTM INTERNATIONAL (ASTM)

Title: (2001) Copper-Beryllium Alloy Plate, Sheet, Strip, and Rolled Bar

Reference in this Section:

Organization: AMERICAN SOCIETY FOR TESTING AND MATERIALS (ASTM)

Title: (1996) Copper-Beryllium Alloy Plate, Sheet, Strip, and Rolled Bar

Do you wish to update the Reference in this Section using the Master Reference information?

Update Organization     Update Reference Title    Yes    No

Compares the References in the Master Reference with those found in the Section

# Reference Wizard

**ASTM B 194**

The Master Reference Title and Organization shown differ from the Reference Title and Organization in the Reference Article of this Section.

Reference in UFGSREF Master Reference List:

Organization: ASTM INTERNATIONAL (ASTM)

Title: (2001) Copper-Beryllium Alloy Plate, Sheet, Strip, and Rolled Bar

Reference in this Section:

Organization: AMERICAN SOCIETY FOR TESTING AND MATERIALS (ASTM)

Title: (1996) Copper-Beryllium Alloy Plate, Sheet, Strip, and Rolled Bar

Do you wish to update the Reference in this Section using the Master Reference information?

Update Organization     Update Reference Title       

Select whether you want to update the Organization and/or the Reference Title

# CSI MasterFormat™ 2004

- Software

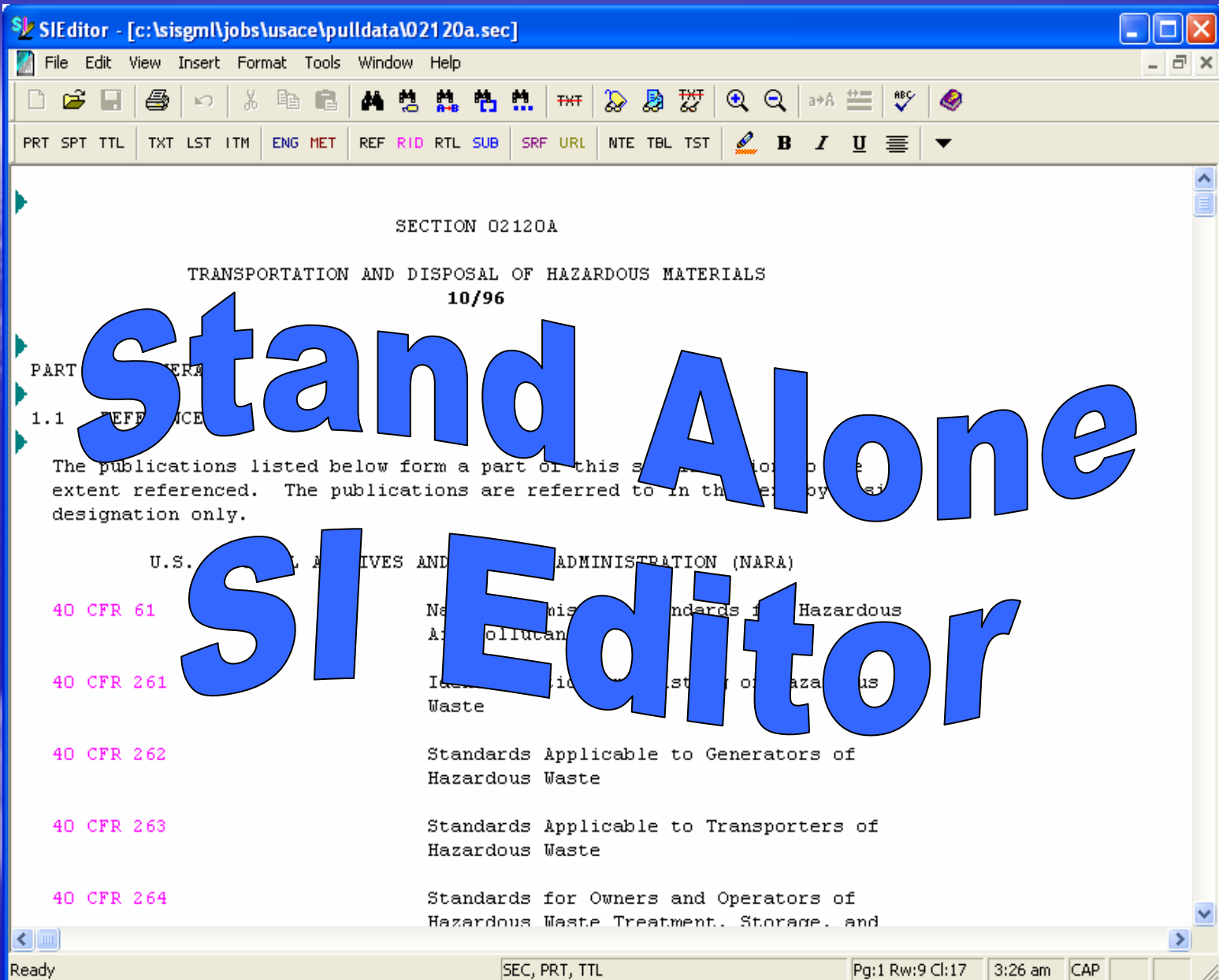
- Will support MasterFormat 2004 by next release
- Will support both MasterFormat 95 and MasterFormat 2004
- File name will increase from 6 alpha/numeric characters up to 14 numeric characters
  - 00 00 00.00 00
  - First three levels are mandatory
  - Last two levels are optional
  - Will use the fifth level to indicate the agency
- Will support the new Division Numbers

# CSI MasterFormat™ 2004

- Guide Specifications
  - Will be converted and available by the April 2006 release
    - Guide Specifications and software will be released and distributed at the same time
  - Will be maintained in MasterFormat 2004 **only**
  - Will not disassemble the Submittal Procedures Section (currently 01330 – MF 01 33 00)
  - Will not disassemble the Sources for Reference Publications (currently 01420 – MF 01 42 00)



**Coming Soon!**



Questions?

# Thank You!

- Prepared by:

Cheryl L. Fitz-Simon

SpecsIntact

Web Developer / Tech Writer

Kennedy Space Center, FL

Web: <http://si.ksc.nasa.gov>

Tech Support email: [specsintact@jbosc.ksc.nasa.gov](mailto:specsintact@jbosc.ksc.nasa.gov)

Tech Support Phone: (321) 867-8800

- Presented by:

Steven P. Freitas

USACE, Sacramento District

1325 J Street

Sacramento, CA 95814-2922

Phone: 916-557-7296

FAX: 916-557-7626

E-mail: [Steven.P.Freitas@usace.army.mil](mailto:Steven.P.Freitas@usace.army.mil)