



**US Army Corps
of Engineers**



Missouri River Geospatial Decision Support Framework

Bryan Baker, Martha Bullock
US Army Corps of Engineers



**US Army Corps
of Engineers**





US Army Corps
of Engineers

Introduction



- Operation of the Missouri River Mainstem Reservoir System to adequately provide for flood control, navigation, irrigation, hydropower, water supply, water quality, recreation, and fish and wildlife requirements is an ongoing challenge for the the Corps
- Revision of the Missouri River Master Water Control Manual in 2004 addresses requirements set by USFWS to restore the Missouri River ecosystem and to protect and recover threatened and endangered species
- To facilitate a comprehensive approach to recovery implementation, the Missouri River Recovery Implementation Committee (MRRIC) has been established





US Army Corps
of Engineers

Introduction



- The strategy defined and implemented by the MRRIC will generate volumes of research data on the ecological habitat needs, physiological endpoints and population modes of species
- To address these requirements, and to encourage a collaborative approach to restoration activities, a web portal has been developed that permits access to associated data and information about the shallow water habitat restoration on the Missouri River
- The web portal integrates the data, tools, and utilities into a comprehensive system to facilitate stakeholder collaboration, data sharing, and sound decision-making



Web Portal



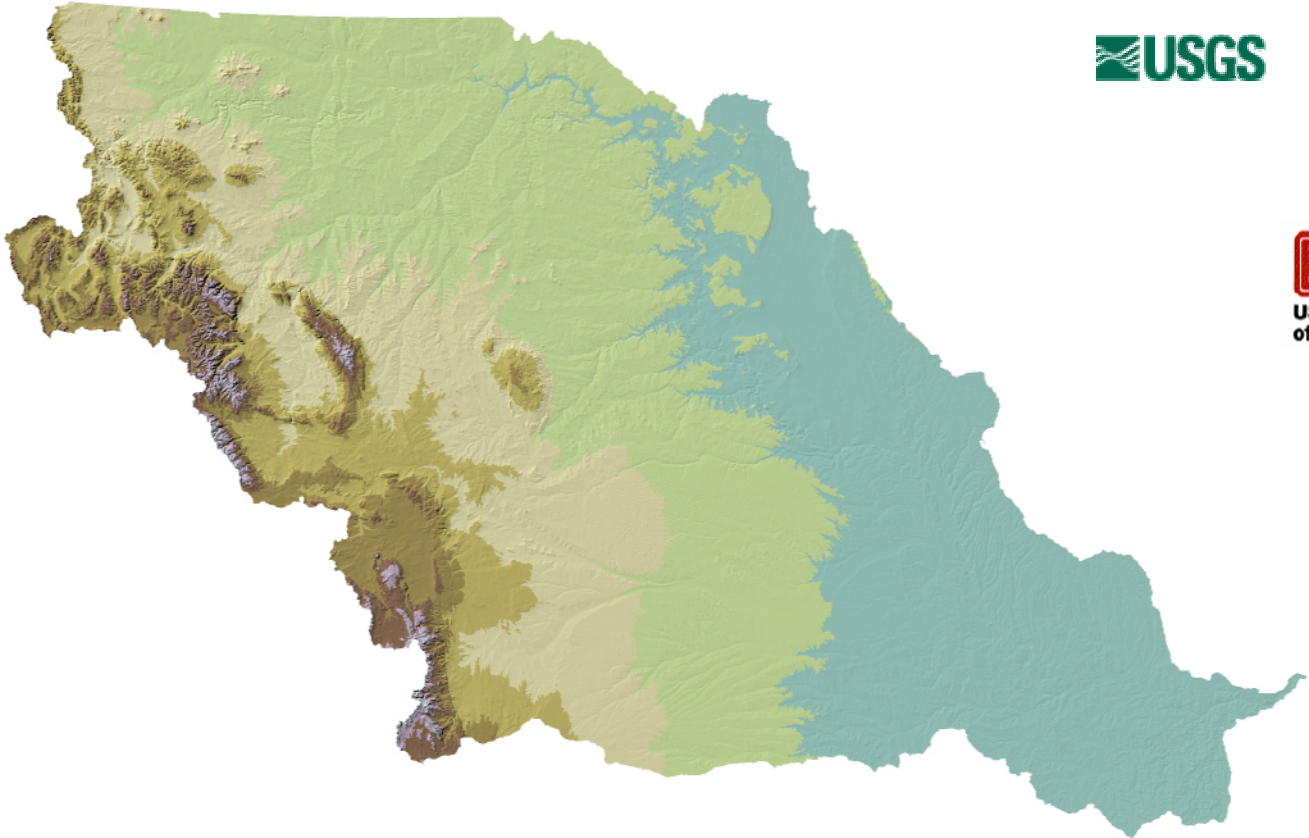
US Army Corps
of Engineers



- Single, uniform access point for all stakeholders to load, view, modify, and share data, documentation, and information
- Provide incentive to stakeholders to collect and distribute data in a standard and systematic way



Active stakeholders include:



Some States have shown interest like IA





US Army Corps
of Engineers

Approach To Problem



- Net-centric data strategy encourages local control of distributed databases, rather than data standardization
- Support for Oracle Integrating Architecture
 - Vector data available as Oracle Tables through straight SQL queries or through Oracle API (OCI)
 - Any CADD or GIS client that can access Oracle geometry can use these data
- Support for ESRI integrating architecture
 - Vector data available as seamless SDE 8.3 layers
 - Map views available as ArcIMS Services
- Support for Service Oriented Architecture
 - Application can consume as well as expose web services
 - Integrates services developed for and supported by other Corps automates information systems (AIS)





US Army Corps
of Engineers

Application



- Database driven – distributed Oracle database
 - Consistent with standard established by the Corps of Engineers and other federal and state agencies
- Spatially enabled database – Oracle/ESRI ArcSDE
 - Attributes and geometries fully integrated in the database
 - Geometries accessible via open standards-based interfaces
 - Full integration with suite of ESRI software including ArcGIS and ArcIMS
- System architecture supports real-time access to and analysis of other Corps and cooperating agency information systems
 - NWD-MR CWMS (Oracle service integration)
 - METerological Aerodrome Report (METAR) (SOAP XML)
 - USGS Sturgeon tracking data (WMS)
 - USFWS Critical Habitat Data (WMS)



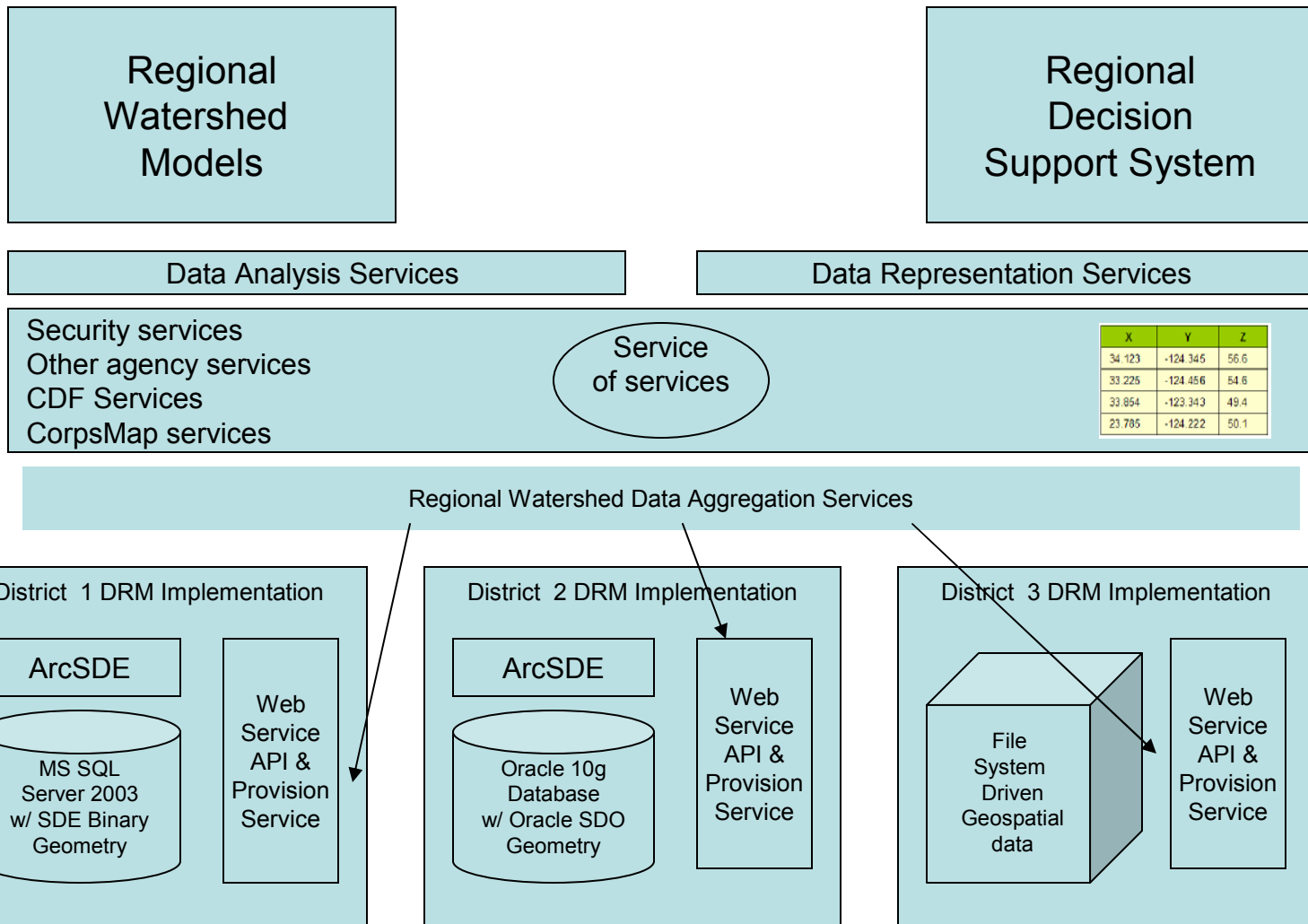


US Army Corps of Engineers

Implementation of Approach



This proposed method for integration of distributed enterprise geospatial data via service oriented architecture is consistent with Corps enterprise architecture and industry best-practices



X	Y	Z
34 123	-124 345	56.6
33 225	-124 456	54.6
33 854	-123 343	49.4
23 785	-124 222	50.1





US Army Corps
of Engineers



Missouri River Fish and Wildlife Recovery Plan - Microsoft Internet Explorer

File Edit View Favorites Tools Help

Back Forward Stop Refresh Home Search Favorites Media Print Mail News RSS Feeds

Address https://maps.crrel.usace.army.mil:4445/moriver_dev/MORIVER_DEV.display.login Go

Google Search Web 83 blocked AutoFill Options

Missouri River Fish and Wildlife Recovery Plan

[Home](#) | [Feedback](#) | [Log Out](#)

Login

To access the Missouri River Fish and Wildlife Recovery Plan data portal, please enter your user name and password below.

Username:

Password:

If you do not have a user name and password and would like to request one, [click here](#).



US Army Corps of Engineers



Missouri River Fish and Wildlife Recovery Plan - Microsoft Internet Explorer

File Edit View Favorites Tools Help

Back Forward Stop Refresh Home Search Favorites Media Mail Print Print Preview

Address https://maps.crel.usace.army.mil:4445/moriver_dev/MORIVER_DEV.display.main# Go

Google Search Web 83 blocked AutoFill Options

Missouri River Fish and Wildlife Recovery Plan

Home | Feedback | Log Out

Home **Map Interface** Model Results Data Utilities Spatial Data Catalog Site Administration

Layer Menu | **Map Legend**

- Map Layers
 - Base Data Layers
 - METAR Weather Data
 - Hydrography
 - Rivers
 - National Hydrography Dataset
 - River Mile Points
 - River Mile Points 1960
 - DTM
 - Structures
 - Dikes
 - SWH Notches
 - Rectified Channel Line
 - Revetments

Scale 1:14,757

CWMS Database Connectivity Tools Search and Zoom Tools **Map Format Tools**

Map Format Tools

Map Size: Select...

Zoom to a River Reach: Rocheport





US Army Corps of Engineers



Missouri River Fish and Wildlife Recovery Plan - Microsoft Internet Explorer

File Edit View Favorites Tools Help

Address https://maps.crrel.usace.army.mil:4445/moriver_dev/MORIVER_DEV.display.main#

Google Search Web 83 blocked AutoFill Options

Missouri River Fish and Wildlife Recovery Plan

Home | Feedback | Log Out

Home **Map Interface** Model Results Data Utilities Spatial Data Catalog Site Administration

Layer Menu | **Map Legend**

- Structures
 - Dikes
 - SWH Notches
 - Rectified Channel Line
 - Revetments
 - DNR Labels
 - Municipal Water Intakes
 - Intakes
 - Boat Ramps
- Water Control Data
- Imagery
- Species Tracking
 - Sturgeon Population

Scale 1:14,757

CWMS Database Connectivity Tools Search and Zoom Tools **Map Format Tools**

Map Format Tools

Map Size:

Zoom to a River Reach:





US Army Corps of Engineers



Missouri River Fish and Wildlife Recovery Plan - Microsoft Internet Explorer

File Edit View Favorites Tools Help

Back Forward Stop Refresh Home Search Favorites Media Mail Print Print Preview Print Setup

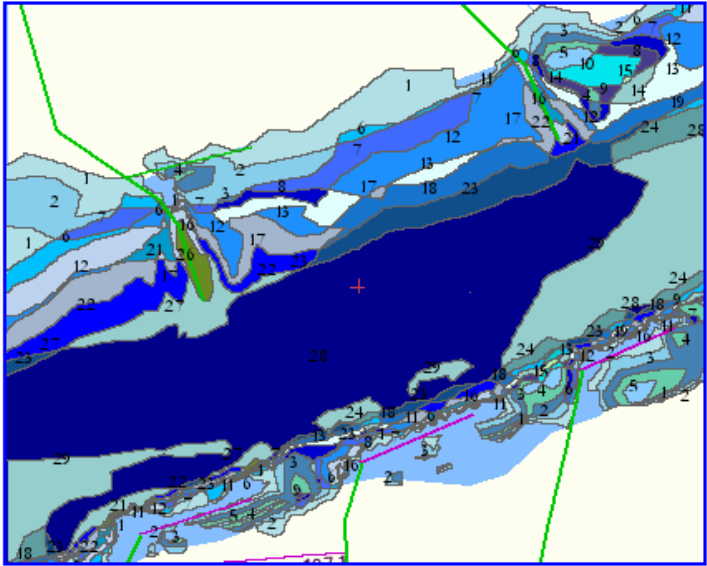
Address https://maps.crrel.usace.army.mil:4445/moriver_dev/MORIVER_DEV.display.main# Go

Google Search Web 83 blocked AutoFill Options

Missouri River Fish and Wildlife Recovery Plan

[Home](#) | [Feedback](#) | [Log Out](#)

[Home](#) [Map Interface](#) [Model Results](#) [Data Utilities](#) [Spatial Data Catalog](#) [Site Administration](#)



Layer Menu

- Species Tracking
- Model Results
 - Rocheport (cfs) 50,000
 - Bakers Bend (cfs) 50,000
 - Doniphan (cfs) 50,000
 - Nebraska City (cfs) 45,000
 - Blair (cfs) 45,000
 - Vermillion (cfs) 45,000
 - Yellowstone (cfs)

Map Legend

Scale 1:4,992

[CWMS Database Connectivity Tools](#) [Search and Zoom Tools](#) [Map Format Tools](#)

Map Format Tools

Map Size:

Zoom to a River Reach:



US Army Corps of Engineers



Missouri River Fish and Wildlife Recovery Plan - Microsoft Internet Explorer

File Edit View Favorites Tools Help

Back Forward Stop Refresh Home Search Favorites Media

Address https://maps.crrel.usace.army.mil:4445/moriver_dev/MORIVER_DEV.display.main# Go

Google Search Web 83 blocked AutoFill Options

Missouri River Fish and Wildlife Recovery Plan

Home | Feedback | Log Out

Home **Map Interface** Model Results Data Utilities Spatial Data Catalog Site Administration

Map navigation icons: Zoom In, Zoom Out, Full Screen, Home, Refresh

Layer Menu | **Map Legend**

Map Layers

- Base Data Layers
- METAR Weather Data
- Hydrography
- Structures
- Water Control Data
- Imagery
- Species Tracking
- Model Results
- Snow Map Data
 - Snow Water Equivalent
 - Snow Depth
 - Snow Pack Ave Temp
 - Snow Melt

Scale 1:4,816,194

CWMS Database Connectivity Tools Search and Zoom Tools Map Format Tools

CWMS Database Connectivity Tools

Select a CWMS Database: Data Status:

Study Type	Project	Forecast Date
<input type="radio"/> Higher Adjusted Basic	<input type="text" value="Select a Database..."/>	





US Army Corps of Engineers



Missouri River Fish and Wildlife Recovery Plan - DEVELOPMENT - - Microsoft Internet Explorer provided by USACE - 0...

File Edit View Favorites Tools Help

Address https://maps.crrel.usace.army.mil:4445/moriver_dev/MORIVER_DEV.display.main# Go


Google Search Web 39 blocked AutoFill Options

Links Other USACE All Recipes Ask Tom cd-rw.org Missouri River Fish and Wildlife Recovery Plan CNN Color Copier

Missouri River Fish and Wildlife Recovery Plan

Home | Feedback | Log Out

Home **Map Interface** Model Results Data Utilities Spatial Data Catalog Site Administration



Map navigation tools: Zoom In, Zoom Out, Pan, Rotate, Refresh

Layer Menu

- MCIAK weather Data
- Hydrography
- Structures
- Water Control Data
- Imagery
- Species Habitat and Locations
- Model Results
- Snow Map Data
- Data from Participating Agencies
 - State of Montana
 - Schools (Legend)
 - Airports (Legend)
 - Cadastral Data (1:25,000) (Le
 - Color Orthophotos
 - State of North Dakota

Map Legend

Scale 1:17,935

CWMS Database Connectivity Tools Search and Zoom Tools Map Format Tools

CWMS Database Connectivity Tools

Select a CWMS Database: Data Status:

Study Type	Project	Forecast Date
<input type="radio"/> Higher Adjusted Basic	<input type="text" value="Select a Database..."/>	
<input type="radio"/> Basic		
<input type="radio"/> Lower Adjusted Basic		

Internet





US Army Corps of Engineers



Missouri River Fish and Wildlife Recovery Plan - Microsoft Internet Explorer

File Edit View Favorites Tools Help

Back Forward Stop Refresh Home Search Favorites Media Print Mail News RSS

Address https://maps.crrel.usace.army.mil:4445/moriver_dev/MORIVER_DEV.display.main# Go

Google Search Web 83 blocked AutoFill Options

Map navigation controls: Zoom In, Zoom Out, Full Screen, Home, Refresh

Layer Menu | **Map Legend**

- Map Layers
 - Base Data Layers
 - METAR Weather Data
 - Station ID
 - Temperature (f)
 - Visibility
 - Dew Point
 - Pressure
 - Wind Dir. and Speed
 - Current Weather
 - Sky Conditions
 - Humidity
 - Altitude
 - Hydrography

Scale 1:173,405

CWMS Database Connectivity Tools | Search and Zoom Tools | Map Format Tools

Search Tools

Choose a layer to search: City

Enter a search parameter: Council Bluffs

Find

1 matches for - Council Bluffs -

Zoom to [Council Bluffs, IA](#)



US Army Corps of Engineers



Missouri River Fish and Wildlife Recovery Plan - Microsoft Internet Explorer

File Edit View Favorites Tools Help

Back Forward Stop Home Search Favorites Media Mail Print Print Preview Stop

Address https://maps.crrel.usace.army.mil:4445/moriver_dev/MORIVER_DEV.display.main# Go

Google Search Web 83 blocked AutoFill Options

Missouri River Fish and Wildlife Recovery Plan

Home | Feedback | Log Out

Home **Map Interface** Model Results Data Utilities Spatial Data Catalog Site Administration

Layer Menu **Map Legend**

- ▲ Rapid Rise
- ▲ Slow Rise
- Neutral
- ▼ Slow Decline
- ▼ Rapid Decline
- ◆ No Report
- ~ Missouri River Basin

Scale 1:153,887

CWMS Database Connectivity Tools Search and Zoom Tools Map Format Tools

CWMS Database Connectivity Tools

Select a CWMS Database: Data Status:

Study Type	Project	Forecast Date
<input type="radio"/> Higher Adjusted Basic	<input type="text" value="Select a Database..."/>	





US Army Corps of Engineers



Missouri River Fish and Wildlife Recovery Plan - Microsoft Internet Explorer

File Edit View Favorites Tools Help

Back Forward Stop Refresh Home Search Favorites Media Print Mail News RSS

Address https://maps.crel.usace.army.mil:4445/moriver_dev/MORIVER_DEV.display.main# Go

Google Search Web 83 blocked AutoFill Options

Scale 1:1,127,035

Cities
Counties
Roads
USACE Divisions/Districts
Recreation Areas
Federal Land
METAR Weather Data
Hydrography

CWMS Database Connectivity Tools Search and Zoom Tools Map Format Tools

CWMS Database Connectivity Tools

Select a CWMS Database: Data Status: Current as of 03/25/2005 08:45:04am

Study Type	Project	Forecast Date
<input type="radio"/> Higher Adjusted Basic <input checked="" type="radio"/> Basic <input type="radio"/> Lower Adjusted Basic	<input type="text" value="Big Bend Dam"/> <input type="text" value="Fort Peck Dam"/> <input type="text" value="Fort Randall Dam"/> <input type="text" value="Garrison Dam"/> <input type="text" value="Gavins Point Dam"/> <input type="text" value="Oahe Dam"/>	<input type="text" value="31-MAY-05"/>

Pool Elevation: →

Identify exposed

Exposed Intakes	Alert Status Elevation	More Information	Zoom on Map
City of Parshall	1814 ft	- Click for information -	- Click to Zoom -
Paradise Point Rural Water Assn (new extension)	1840 ft	- Click for information -	- Click to Zoom -





US Army Corps of Engineers



Missouri River Fish and Wildlife Recovery Plan - Microsoft Internet Explorer

File Edit View Favorites Tools Help

Back Forward Stop Refresh Home Search Favorites Media Print Mail News RSS

Address https://maps.crel.usace.army.mil:4445/moriver_dev/MORIVER_DEV.display.main# Go

Google Search Web 83 blocked AutoFill Options

Scale 1:952,675

CWMS Database Connectivity Tools Search and Zoom Tools Map Format Tools

CWMS Database Connectivity Tools

Select a CWMS Database: Data Status: Current as of 03/25/2005 08:45:04am

Study Type	Project	Forecast Date
<input checked="" type="radio"/> Higher Adjusted Basic	Big Bend Dam	<input type="text" value="31-JUL-05"/>
<input type="radio"/> Basic	Fort Peck Dam	
<input type="radio"/> Lower Adjusted Basic	Fort Randall Dam	
	Garrison Dam	
	Gavins Point Dam	
	Oahe Dam	

Pool Elevation: →

Identify exposed

Exposed Boat Ramps	Alert Status Elevation	More Information	Zoom on Map
Beaver Creek	1592 ft	- Click for information -	- Click to Zoom -
Beaver Creek	1598 ft	- Click for information -	- Click to Zoom -
Beaver Creek	1585 ft	- Click for information -	- Click to Zoom -
Bob's Resort	1585 ft	- Click for information -	- Click to Zoom -
Bush's Landing	1593 ft	- Click for information -	- Click to Zoom -





US Army Corps
of Engineers



Missouri River Fish and Wildlife Recovery Plan - Microsoft Internet Explorer

Address https://maps.crrel.usace.army.mil:4445/moriver_dev/MORIVER_DEV.display.main#

Missouri River Fish and Wildlife Recovery Plan

Home | Feedback | Log Out

Home Map Interface **Model Results** Data Utilities Spatial Data Catalog Site Administration

How reach locations were decided upon, model used, timeframe for data, update frequency, and all other summary information.

[Upload Model Results Data](#) [Download Model Results](#) [Model Calculations](#)

Download Model Results

Select a Reach	Select a Flow Rate	Download
Rocheport	Select a flow rate... 20,000 cfs 30,000 cfs 40,000 cfs 50,000 cfs 60,000 cfs 70,000 cfs 80,000 cfs 90,000 cfs 100,000 cfs 110,000 cfs 120,000 cfs	Download Data

File Download

Some files can harm your computer. If the file information below looks suspicious, or you do not fully trust the source, do not open or save this file.

File name: mr_roch60.zip
File type: WinZip File
From: maps.crrel.usace.army.mil

Would you like to open the file or save it to your computer?

[Open](#) [Save](#) [Cancel](#) [More Info](#)

Always ask before opening this type of file





US Army Corps
of Engineers



Missouri River Fish and Wildlife Recovery Plan - Microsoft Internet Explorer

Address: https://maps.crrel.usace.army.mil:4445/moriver_dev/MORIVER_DEV.display.main#

Missouri River Fish and Wildlife Recovery Plan

Home | Feedback | Log Out

Home | Map Interface | **Model Results** | Data Utilities | Spatial Data Catalog | Site Administration

How reach locations were decided upon, model used, timeframe for data, update frequency, and all other summary information.

[Upload Model Results Data](#) | [Download Model Results](#) | [Model Calculations](#)

Model Calculations

Select a Reach	Select a Flow Rate
Bakers Bend	50,000 cfs

[Calculate](#) → View Calculation Methods

→ Total Area Where

<input checked="" type="checkbox"/> Depth	<input checked="" type="checkbox"/> Velocity
falls within 5-10 ft	falls within Select range...
OR	AND
--	Select value...
	<=
Calculate	2 ft/sec
	Select value...
	0 ft/sec
	.5 ft/sec
	1 ft/sec
	2 ft/sec
	3 ft/sec
	4 ft/sec

→ 34.12 acres



US Army Corps
of Engineers



Missouri River Fish and Wildlife Recovery Plan - Microsoft Internet Explorer

File Edit View Favorites Tools Help

Address https://maps.crrel.usace.army.mil:4445/moriver_dev/MORIVER_DEV.display.main# Go

Missouri River Fish and Wildlife Recovery Plan

Home | Feedback | Log Out

Home Map Interface Model Results **Data Utilities** Spatial Data Catalog Site Administration

Tools to provide detailed access to spatial data, model results, and pre-formatted presentation materials.

Search Tools Reports **Presentation Materials**

Printable Map Set-up

-- Create a pre-formatted map for easy printing --

Select a Page Size: 8.5 x 11 (portrait)

Add a Title: Missouri River Fish and Wildlife Recovery Plan

(no special characters - ex. '&' and ';')

Add Additional Text: 11 February 2005

Other Map Features to Include:
 Scalebar Scale
 North Arrow Legend
 Corps of Engineers Logo

Create Map

Coordinates: : x= 422 and y= 245

Internet



US Army Corps
of Engineers



Missouri River Fish and Wildlife Recovery Plan - Microsoft Internet Explorer

Address https://maps.crrel.usace.army.mil:4445/moriver_dev/MORIVER_DEV.display.main#

Missouri River Fish and Wildlife Recovery Plan

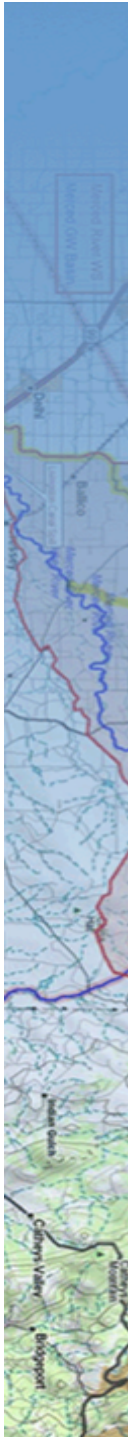
Home | Feedback | Log Out

Home Map Interface Model Results Data Utilities **Spatial Data Catalog** Site Administration

To view the spatial data available in the Map Interface, select the data type from the buttons below. Data are listed by file name. To get more information about the source of each dataset, click on the link listed under the "Source" column for each "Theme Name". Most datasets are available for download by clicking the "Download" button. Data are delivered in a .zip file and include the spatial dataset (ESRI shapefile) and available metadata.

Base Data Missouri River Data Missouri River Imagery

Base Data		
THEME NAME	SOURCE	DOWNLOAD
Airports	GDT	Download Data
Airports	ESRI	Download Data
Arial Landmarks	GDT	Download Data
Cities	ESRI	Download Data
Cities	Navigation Data Center	Download Data
Counties	USGS National Atlas	Download Data
Counties	GDT	Download Data
Countries	ESRI	Download Data
Dams	USGS National Atlas	Download Data
Digital Ortho Quads	i-cubed	- not available at this time -
Federal Land	USGS National Atlas	Download Data
Interstate Exits	GDT	Download Data
Interstates	ESRI	Download Data
Lakes	USGS National Atlas	Download Data





US Army Corps
of Engineers



Missouri River Fish and Wildlife Recovery Plan - Microsoft Internet Explorer

Address https://maps.crrel.usace.army.mil:4445/moriver_dev/MORIVER_DEV.display.main#

Missouri River Fish and Wildlife Recovery Plan

Home | Feedback | Log Out

Home Map Interface Model Results Data Utilities **Spatial Data Catalog** Site Administration

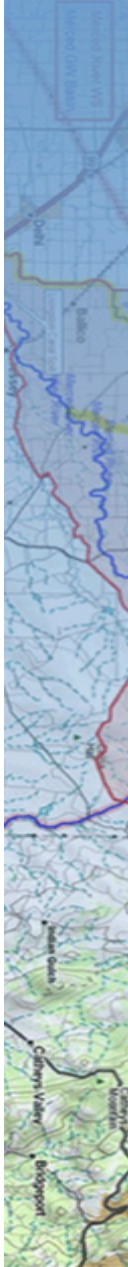
To view the spatial data available in the Map Interface, select the data type from the buttons below. Data are listed by file name. To get more information about the source of each dataset, click on the link listed under the "Source" column for each "Theme Name". Most datasets are available for download by clicking the "Download" button. Data are delivered in a .zip file and include the spatial dataset (ESRI shapefile) and available metadata.

Base Data Missouri River Data Missouri River Imagery

Missouri River		
THEME NAME	SOURCE	DOWNLOAD
Boat Ramps	NWD	Download Data
CWMS Data	NWO CWMS Database	- not available at this time -
DNR Labels	NWD	Download Data
Dikes (NWK)	NWD	Download Data
Dikes (NWO)	NWD	Download Data
Intakes	NWD	Download Data
Missouri River Basin	NWD	Download Data
Rectified Channel Line	NWD	Download Data
Revetments	NWD	Download Data
River Miles	NWD	Download Data
River Miles 1960	NWD	Download Data
SWH Notches	NWD	Download Data
Sturgeon	NWD	Download Data



US Army Corps of Engineers



Missouri River Fish and Wildlife Recovery Plan - DEVELOPMENT - - Microsoft Internet Explorer provided by USACE - 0...

File Edit View Favorites Tools Help

Back Forward Stop Refresh Home Search Favorites

Address https://maps.crel.usace.army.mil:4445/moriver_dev/MORIVER_DEV.display.main# Go

Google Search Web 39 blocked AutoFill Options

Links Other USACE All Recipes Ask Tom cd-rw.org Missouri River Fish and Wildlife Recovery Plan CNN Color Copier

Missouri River Fish and Wildlife Recovery Plan

Home | Feedback | Log Out

Home Map Interface Model Results **Data Utilities** Spatial Data Catalog Site Administration

Sturgeon Imaging Reports Presentation Materials

View Acoustic Imagery

Select a File

Select a file to view... ▾

11.0 11.0
10.0 10.0
9.0 9.0
8.0 8.0
7.0 7.0
6.0 6.0
5.0 5.0
4.0 4.0
3.0 3.0
meters

Play Stop Previous Next Full Screen

Upload Acoustic Imagery

Select a File

- Click to view instructions for uploading data -

Browse...

Upload File

Internet



US Army Corps of Engineers



Missouri River Fish and Wildlife Recovery Plan - Microsoft Internet Explorer

Address https://maps.crrel.usace.army.mil:4445/moriver_dev/MORIVER_DEV.display.main#

Missouri River Fish and Wildlife Recovery Plan

Home | Feedback | Log Out

Home | Map Interface | Model Results | Data Utilities | **Spatial Data Catalog** | Site Administration

To view the spatial data available in the Map Interface, select the data type from the buttons below. Data are listed by file name. To get more information about the source of each dataset, click on the link listed under the "Source" column for each "Theme Name". Most datasets are available for download by clicking the "Download" button. Data are delivered in a .zip file and include the spatial dataset (ESRI shapefile) and available metadata.

Base Data | Missouri River Data | Missouri River Imagery

Data Sources

- [IMAGERY_FTPK_DEG_REACH](#)
- [IMAGERY_GAPT_PONE_051998](#)
- [IMAGERY_IA_MRSID](#)
- [IMAGERY_YELLOWSTONE](#)
- [IMAGERY_FTRA](#)
- [IMAGERY_GAPT_PONE_081996](#)
- [IMAGERY_MRSID](#)
- [IMAGERY_FTRA_DEG_REACH](#)
- [IMAGERY_GARRISON_HEADWATER](#)
- [IMAGERY_OAHE](#)

IMAGERY_FTPK_DEG_REACH → Top of Page

THEME NAME	SOURCE	DOWNLOAD
r1sht01	NWD	Download Data
r1sht02	NWD	Download Data
r1sht03	NWD	Download Data
r1sht04	NWD	Download Data
r1sht05	NWD	Download Data
r1sht06	NWD	Download Data
r1sht07	NWD	Download Data
r1sht08	NWD	Download Data
r1sht09	NWD	Download Data



US Army Corps
of Engineers



Missouri River Fish and Wildlife Recovery Plan - Microsoft Internet Explorer

File Edit View Favorites Tools Help

Address https://maps.crrel.usace.army.mil:4445/moriver_dev/MORIVER_DEV.display.main# Go

Missouri River Fish and Wildlife Recovery Plan

Home | Feedback | Log Out

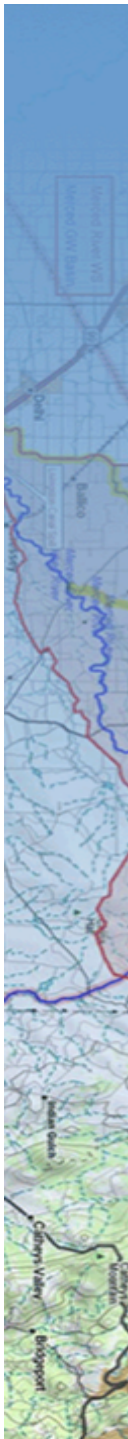
Home Map Interface Model Results Data Utilities Spatial Data Catalog **Site Administration**

Development Notes: When you add a user or reset your password, the default will be "change". Use this initial default password to log back into the system.

Modify Password View User List Add User Modify/Delete User

Create User

Username:	<input type="text" value="u4rt9mjf"/>
Full Name:	<input type="text" value="Martha F Bullock"/>
Privileges:	Public View <input type="button" value="v"/>
Email Address:	Public View <input type="text"/>
Organization:	Agency View <input type="text"/>
	Corps View - Read <input type="text"/>
	Corps View - Read/Write <input type="text"/>
	Account Administrator <input type="text"/>





US Army Corps
of Engineers



Missouri River Fish and Wildlife Recovery Plan - Microsoft Internet Explorer

Address https://maps.crrel.usace.army.mil:4445/moriver_dev/MORIVER_DEV.display.main#

Missouri River Fish and Wildlife Recovery Plan

[Home](#) | [Feedback](#) | [Log Out](#)

[Home](#) [Map Interface](#) [Model Results](#) [Data Utilities](#) [Spatial Data Catalog](#) [Site Administration](#)

Bug Reporting / Suggestion Form

Personal Details

Name

E-mail Address

Date

Problem

Short Description

Full description

Describe how to replicate the problem

Describe any workarounds you have found

Describe ideal functionality

Severity

Usability problem

Low priority

Cosmetic problem

Priority

Must be fixed as soon as possible

Must fix

Fix if time allows

Software and Hardware

What kind of browser are you using?

What kind of operating system are you using?



US Army Corps
of Engineers

Comments/Questions?



Bryan E Baker
Northwest Division, Missouri River Region
US Army Corps of Engineers
Omaha, NE

Martha F Bullock
Remote Sensing/GIS Center of Expertise
US Army Corps of Engineers
Hanover, NH