



NDIA
11th Annual
Expeditionary Warfare Conference
Force Structure Uncertainty
Panel Discussion
25 October 2006

Jim Thomsen
Program Executive Officer
Littoral & Mine Warfare

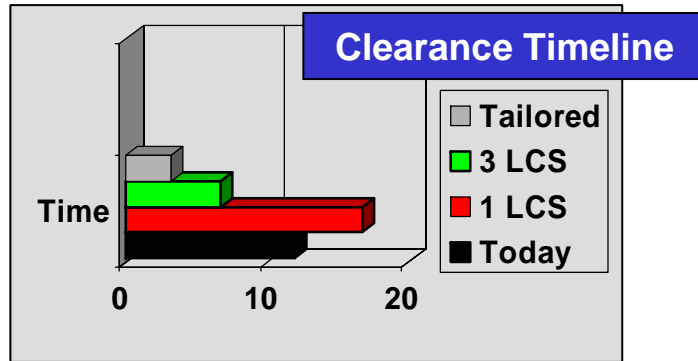
“Sustain combat readiness ... with the right combat capabilities - access, speed, agility, adaptability, persistence, awareness and lethality - for the right cost.”

Admiral Mike Mullen, CNO Guidance, 2006

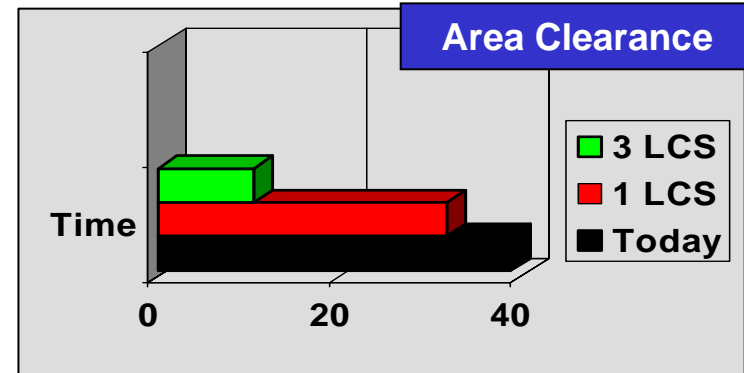


Adaptive Force Packages and Force Structure -- an LCS example

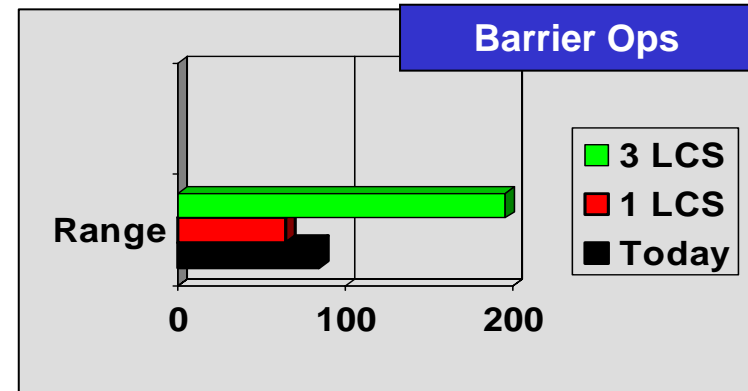
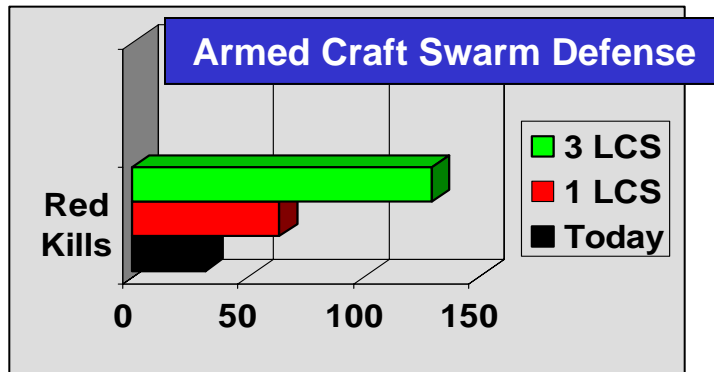
Mine Countermeasures



Anti-Submarine Warfare



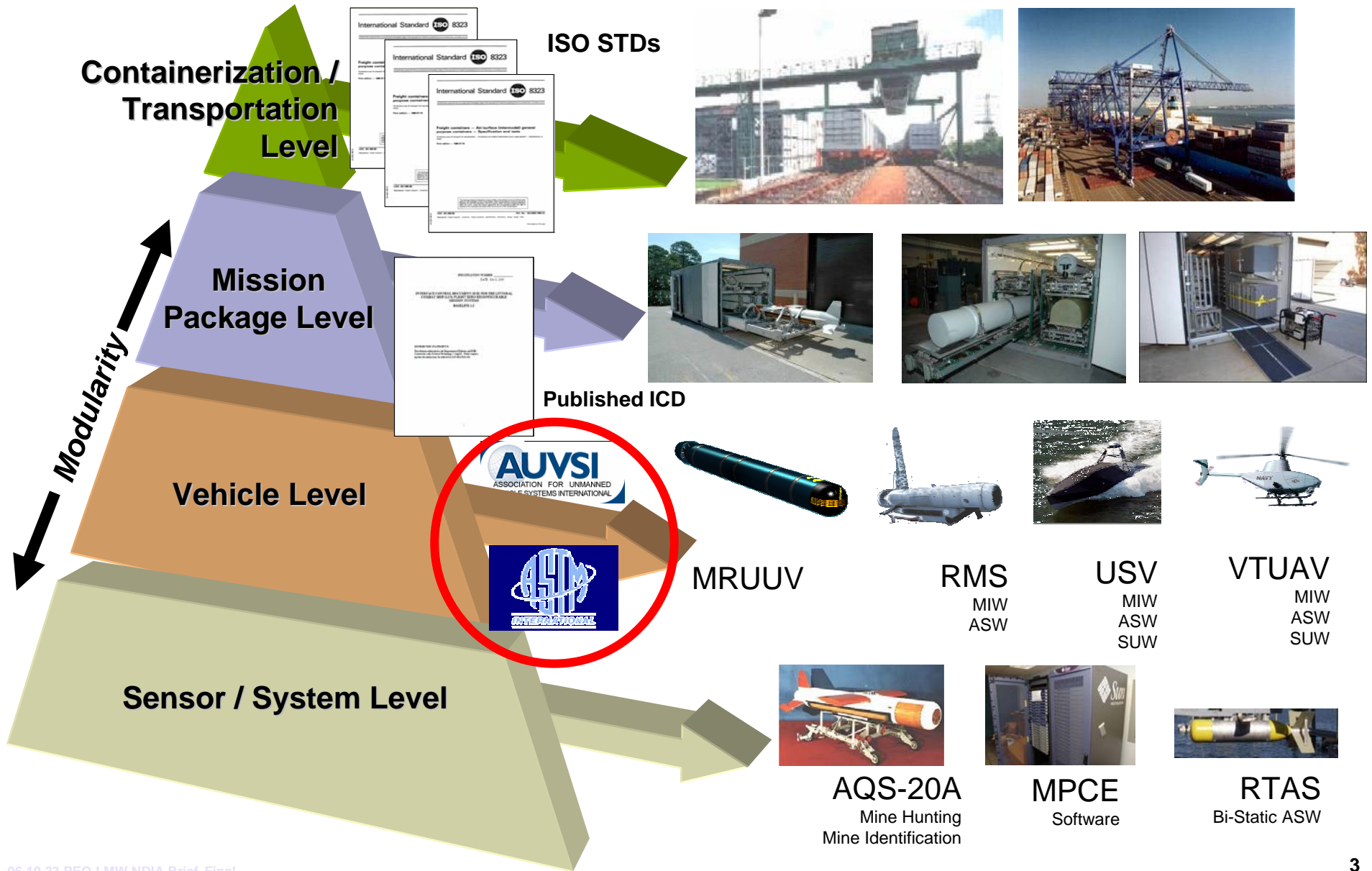
Surface Warfare



"We will develop Adaptive Force Packages ... in support of operations in blue, green, and brown water environments ..." Admiral Mike Mullen --- CNO Guidance, 2006



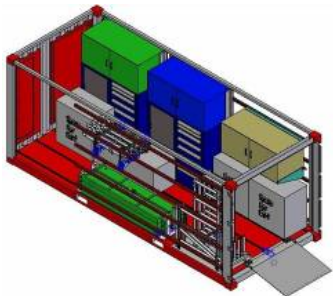
Adaptive Force Packages, Mission Packages, and Modularity



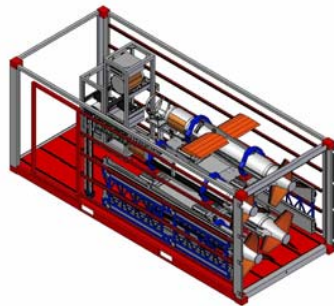


The First LCS Mission Package Realized

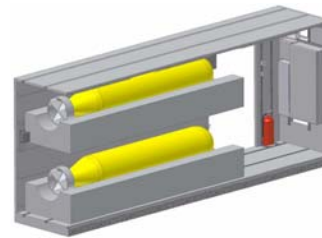
RMS



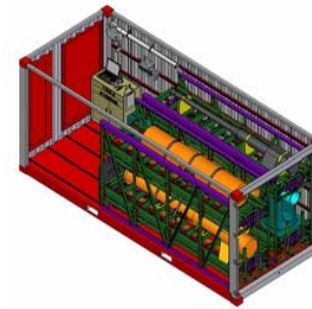
AQS-20A



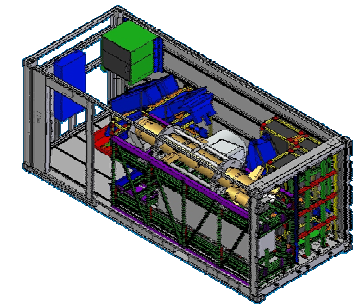
BPAUV



AMNS /
ALMDS /
RAMICS



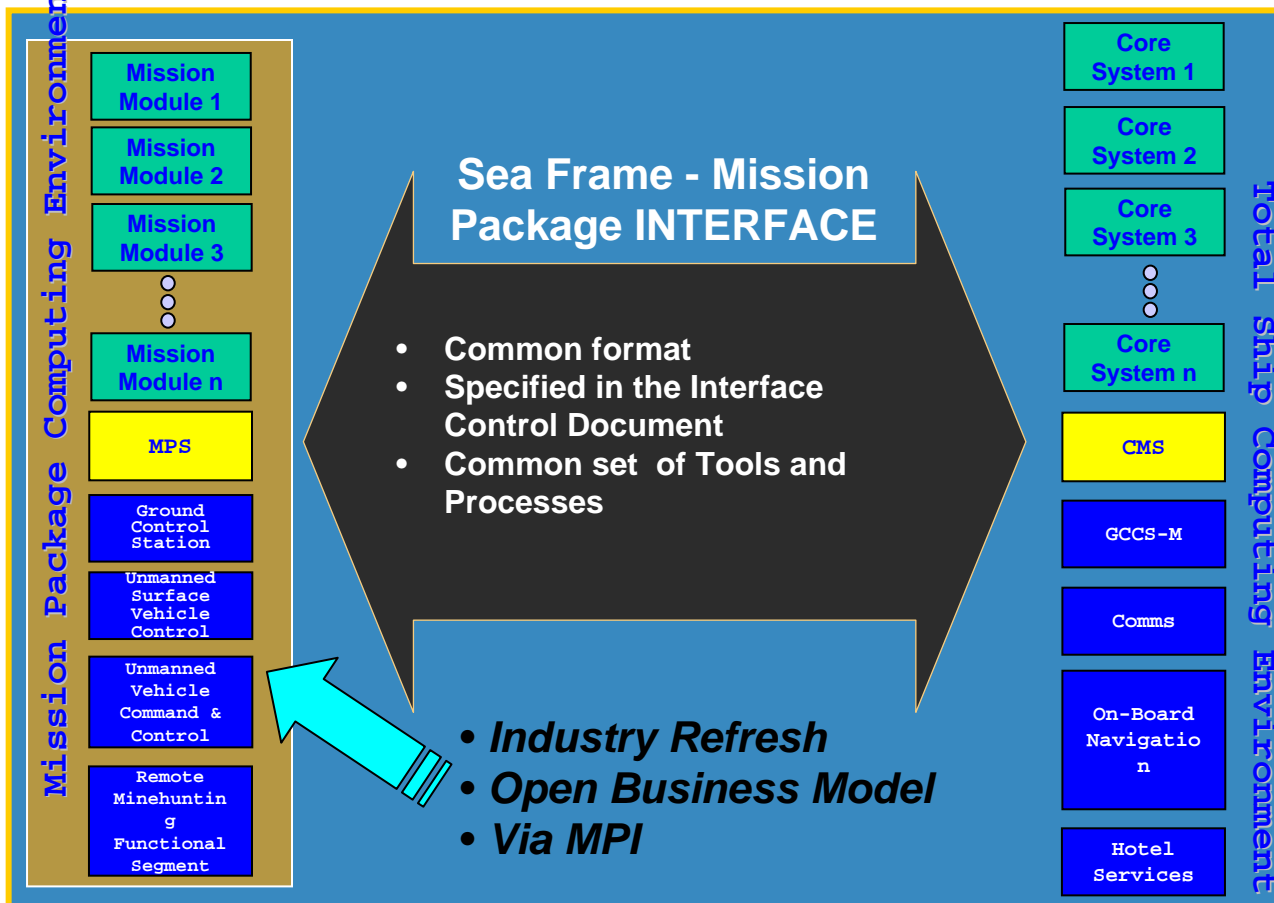
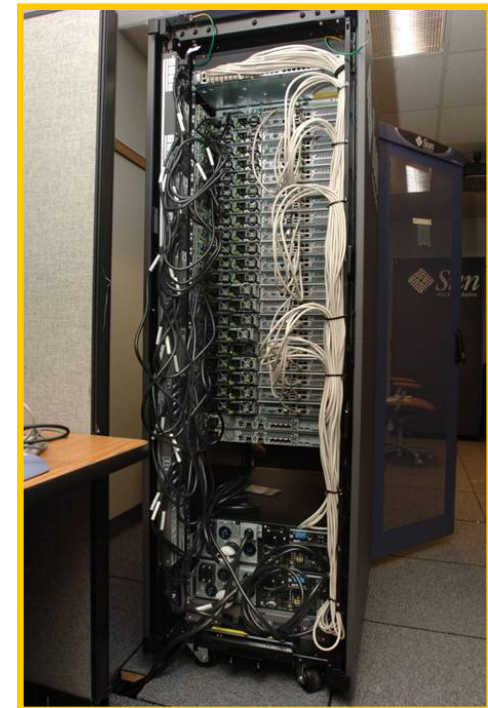
OASIS &
Helo Mod Kit





Mission Package Open Computing Environment

- Maximum use of existing S/W – Common S/W apps with Current Fleet platforms
- MPs interface with LCS Sea frame through documented ICD
- OA Level 3 COTS H/W allows Open System model for acquisition and development

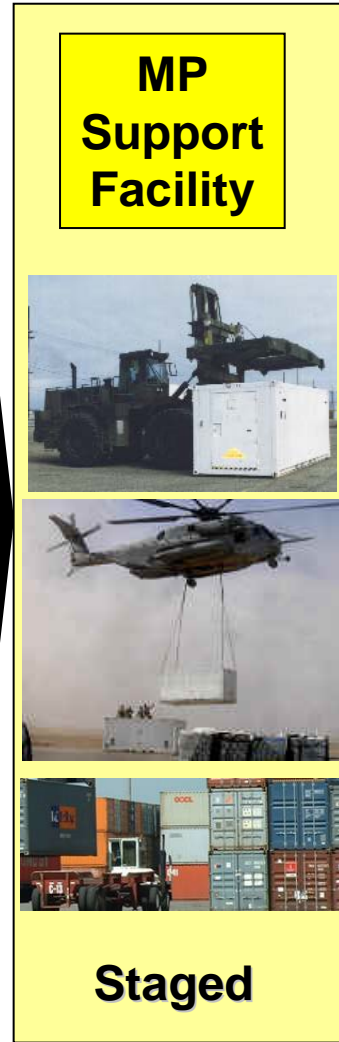
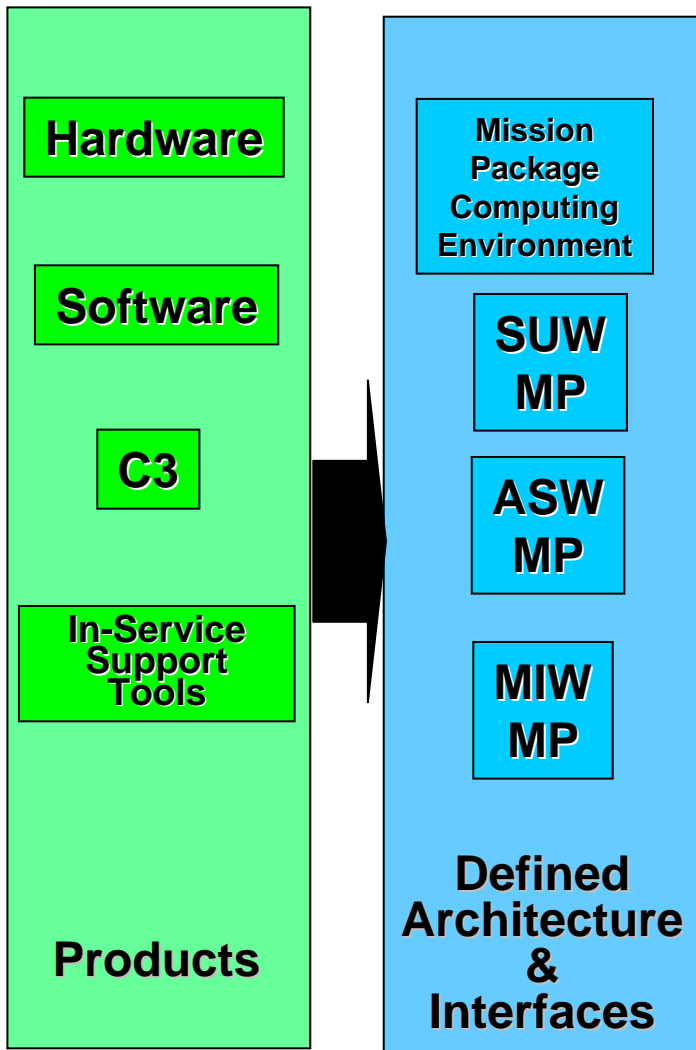




Mission Package Open Business Model

Approach

Mission Package Integrator



Spiral Development