



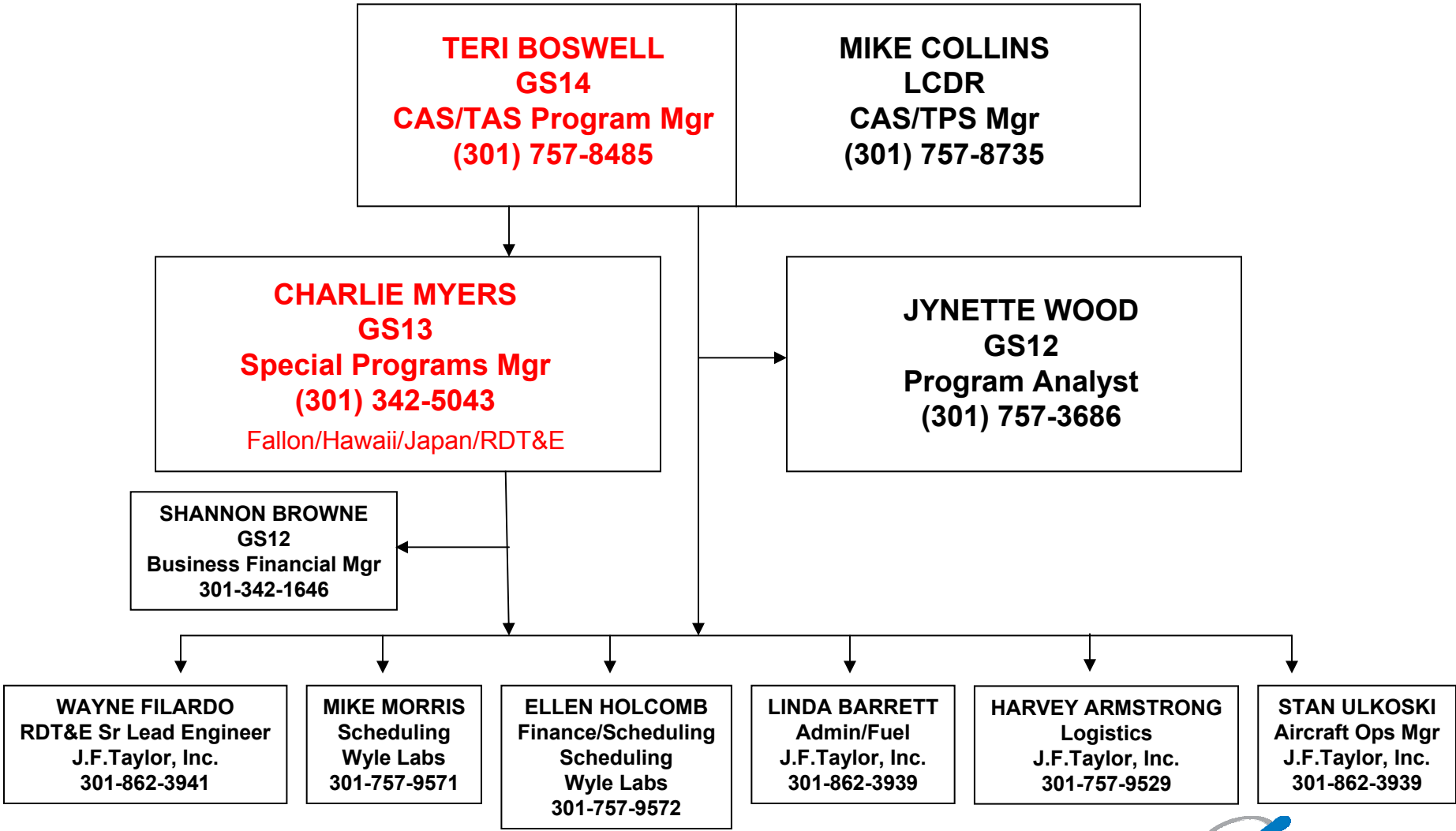
NDIA T & E CONFERENCE
09 MAR 06



Mr. Stan Ulkoski
J. F. Taylor, Inc.
(contractor support)
PMA-207D2
Commercial Air Services
Tactical Air Services



CAS / TAS Organization





CAS MISSION



- Fleet support/DOD – Provide cost effective capable aircraft utilizing commercial, RDT&E prototype and generic EW systems to meet training requirements with no degradation to training.
- RDT&E – Provide to the DOD community cost effective aircraft that can be modified to meet advance system development requirements and access to DOD airborne training systems.

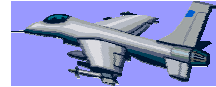
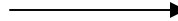
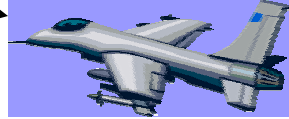
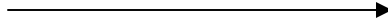


National Defense

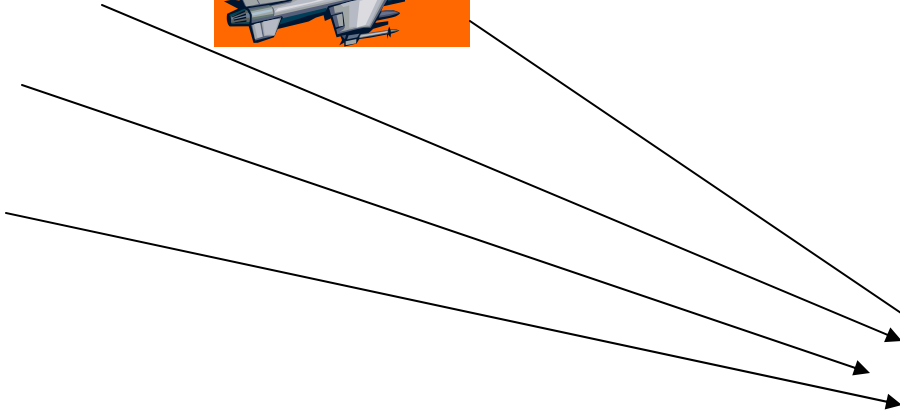


- PMA-207D2 front line training support.
- Prior to fleet deployment Commercial Air contractors provide OPFOR and ADFOR.
- Missions flown by C/TAS provide the expected hostile environment the battle group will encounter.

opposing forces



friendly forces





- Prop 1 aircraft
- Lear Jet 12 aircraft
- Alpha Jet (4) } 8 aircraft
- Hawker Hunter (4) }
- Kfir 6 aircraft
- G-1 Gulfstream 2 aircraft
- Tanker 1 aircraft



Total CAS/TAS Fleet support aircraft



30 Aircraft



CONTRACTORS



Contractors!

Flight International, Inc
Newport News, VA
North Island, San Diego, CA
Learjet and Cheyenne



Airborne Tactical Advantage Company
Newport News, VA
F-21C2 Kfir/Hawker Hunter

Phoenix Air, Inc
Cartersville, GA
G-1 Gulfstream

Omega Aerial Refueling Services, Inc
Alexandria, VA
KC707 Tanker



Air USA, Inc
Quincy, IL
Alpha Jet





WHY COMMERCIAL AIR SERVICES???



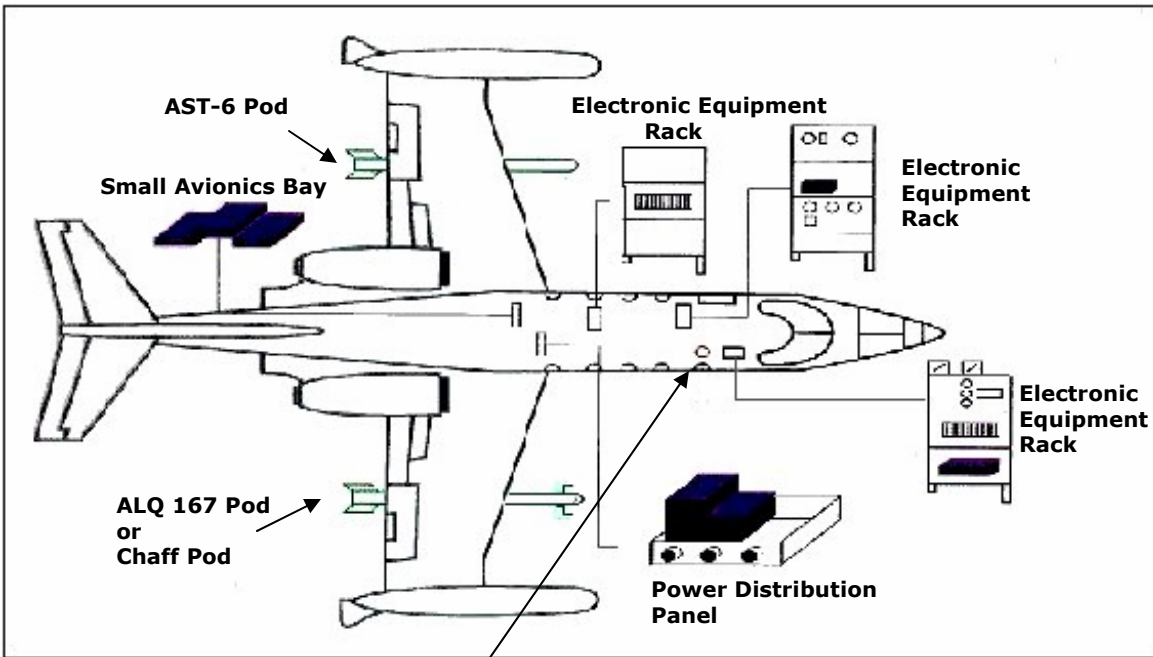
1. **Over 20 years of RDT&E experience, working with FAA, contractors, and DOD agencies**
2. **Central point for air assets**
3. **Cost effective aircraft and EW support systems**
4. **97% Mission completion rate**
5. **Contract in place**
6. **Small foot print**
7. **Majority of the pilots are former military**
8. **Engineering in house**
9. **Global support**
10. **Financial tracking provided**



WHY COMMERCIAL AIR SERVICES???



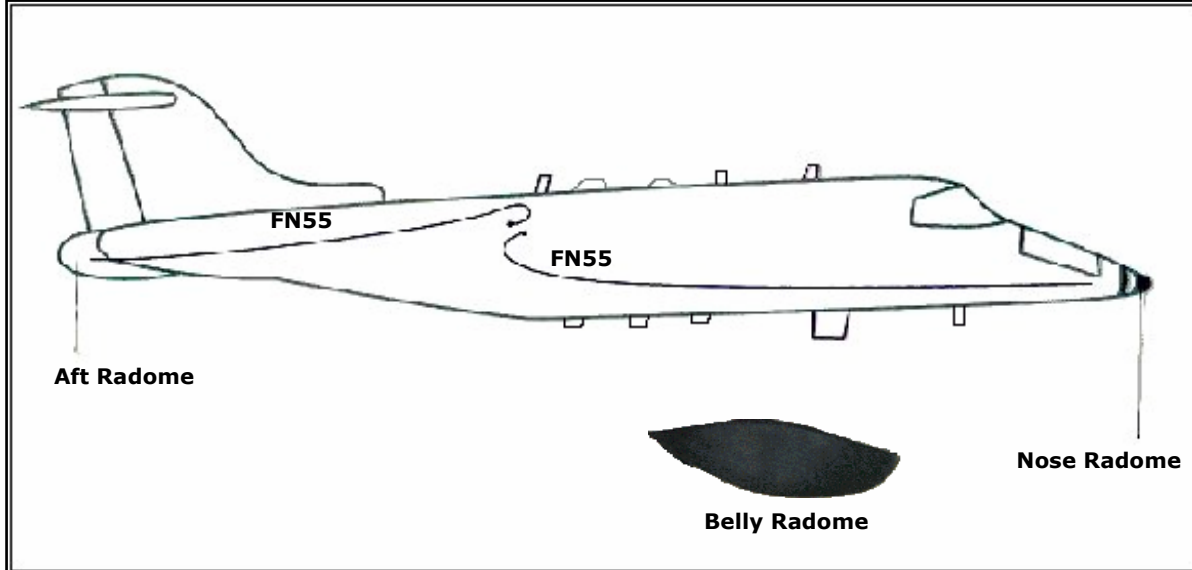
- **OPSEC capable**
 - **In-house or can access: EA / ECM / threat sim / chaff pods, tow targets, and prototype EW systems**
- 14. Extensive electronic warfare experience in military training, RDT&E and contractor RDT&E**
 - 15. FAA certified (STC, DER, Form-337 capable)**
 - 16. Available to government agencies and civilian contractors supporting government projects**



Airborne Lab Configuration

- Available:**
- DGPS**
 - A/C Pitch-Roll Heading Altitude**

**Test Operator/Test Engineer Station
UHF Radio (independent of cockpit)
Comm with air units and/or ground units**





WORLD-WIDE SUPPORT DOD and RDT&E

LOCATIONS SUPPORTED **PERMANENT BASING**

North Island, CA
Pt. Muqu, CA
Learjets / Alpha Jets

Newport News, VA
Learjets / Kfirs / Hawker Hunters

Seattle, WA

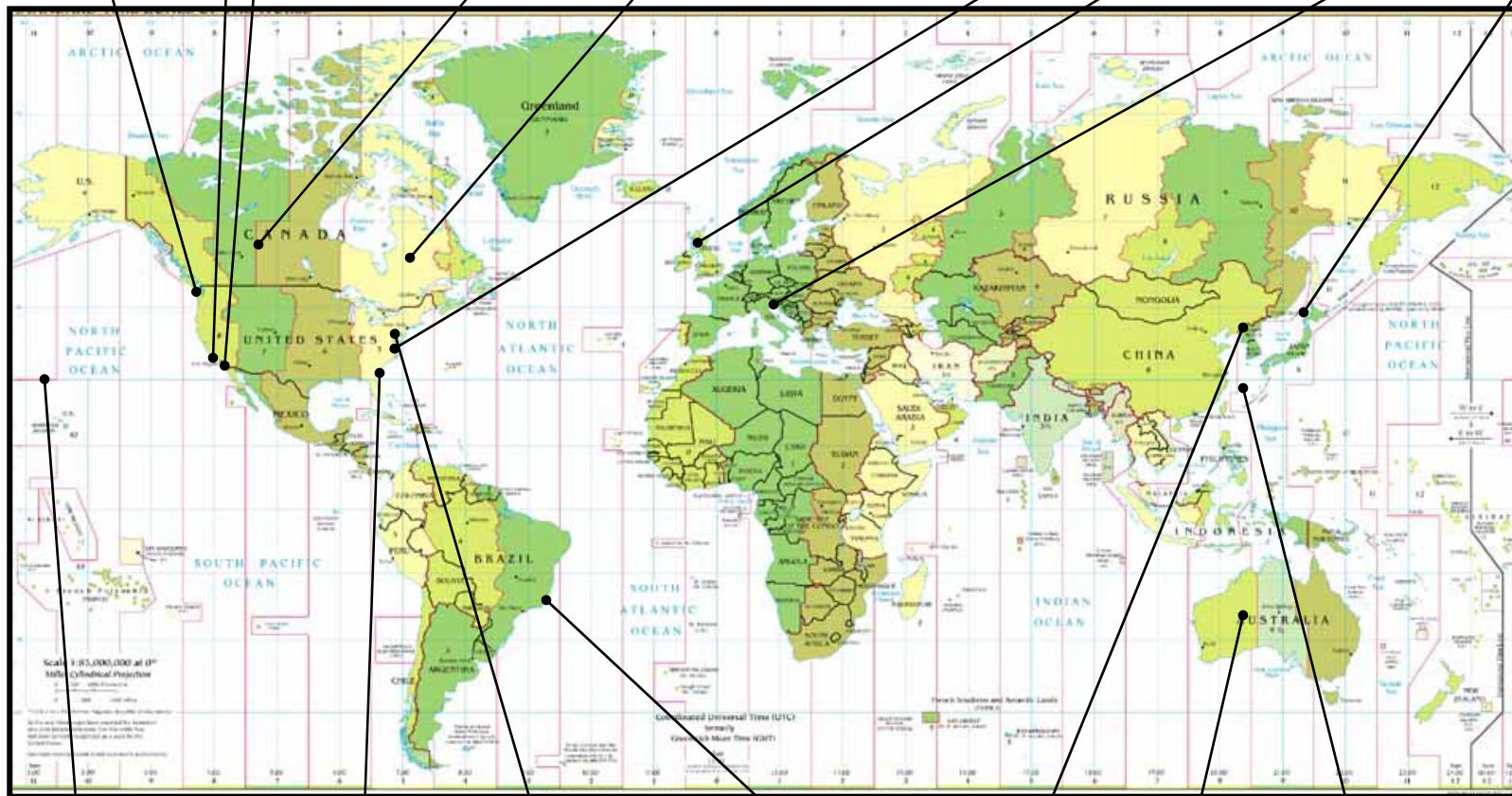
Cold Lake, CANADA

Quebec, CANADA

SCOTLAND

Naples, ITALY

JAPAN
Alpha Jets



HAWAII
June 06: Alpha Jets

Cartersville, GA
G-1 Gulfstream

Patuxent River, MD
Tanker

Rio de Janeiro, BRAZIL

KOREA

AUSTRALIA

Det to Okinawa, JAPAN



NDIA T & E CONFERENCE
09 MAR 06



QUESTIONS ???

www.electwarairc.com