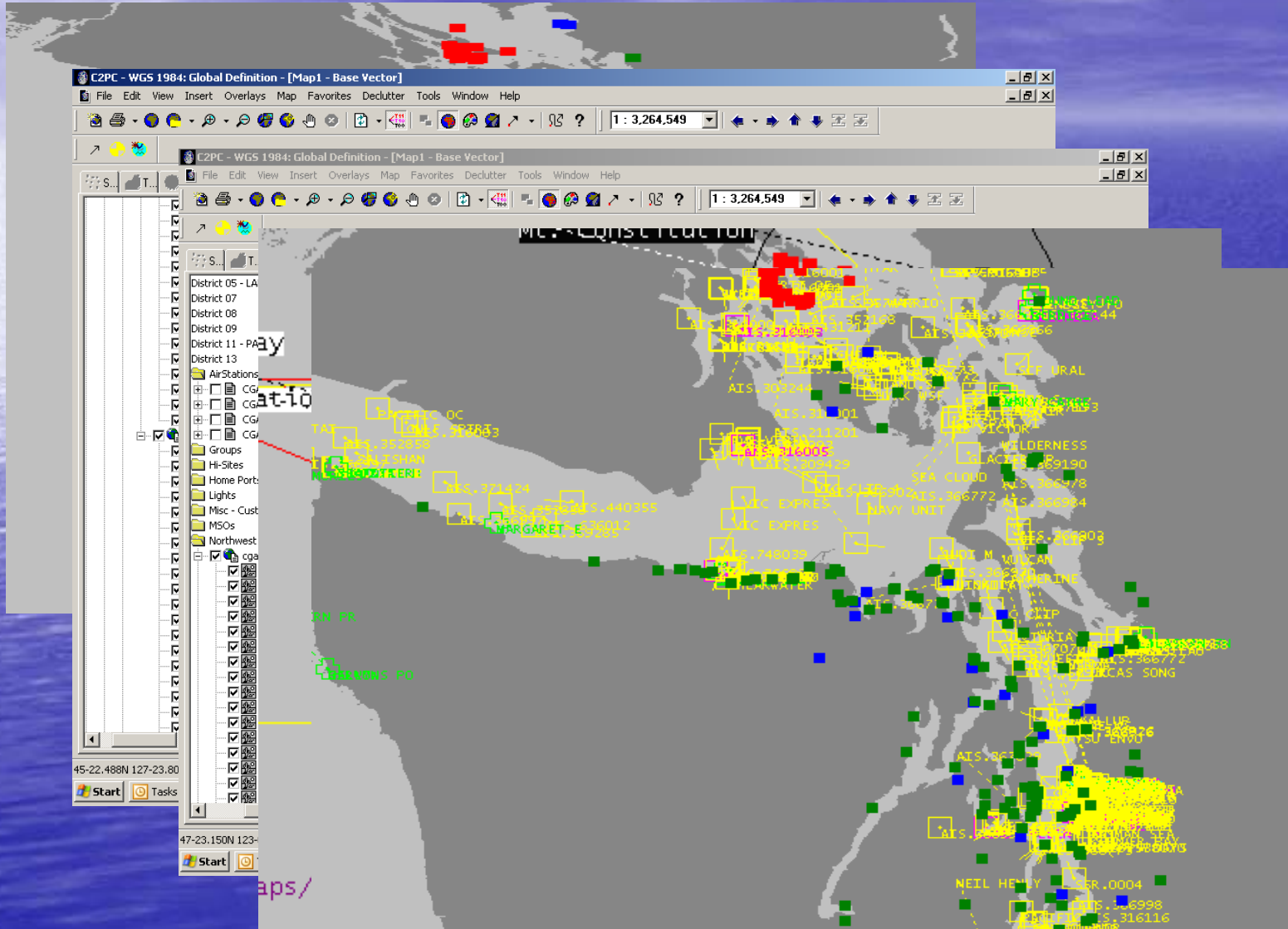


Citizen's Action Network

*Putting the "Home"
in Homeland
Security*

- **"The maritime threat environment of the 21st Century *requires* broader scope and a more comprehensive vision.**
- **We *must* look beyond traditional surveillance of ports, waterways, and oceans, and continuously adapt to new challenges and opportunities.**
- **We *must* set priorities for existing and developing capabilities to efficiently minimize risks while contending with an uncertain future."**
- ***The National Plan to Achieve Maritime Domain Awareness for the National Strategy for Maritime Security Oct 2005***

Membership maintained in C2PC *A NATIONAL SYSTEM*



Current State of Citizen's Action Network

"The vastness and complexity of the maritime domain make public and private partnerships a prerequisite of preparedness and effective response."

Vice Admiral Thad W. Allen before the Senate Committee on Commerce, Science & Transportation March 9, 2006

1 Coast Guardsman for every 2 miles of shoreline

45,000 Active Duty Coast Guardsmen

1 firefighter for every 280 people
436,000 sworn law enforcement personnel

436,000 sworn law enforcement personnel

860,000 all levels of pre-hospital services:
Basic EMT, intermediate EMT, paramedic

860,000 all levels of pre-hospital services:
Basic EMT, intermediate EMT, paramedic

Basic EMT, intermediate EMT, paramedic

1 Coast Guardsman for every 2 miles of shoreline

Questions?

