



# Deployable Operations Group





# U.S. Coast Guard – At a Glance

---

**Established 1790**

## **Missions**

- **Ports, Waterways & Coastal Security**
- **Illegal Drug Interdiction**
- **Undocumented Migrant Interdiction**
- **Defense Readiness**
- **Other Law Enforcement, e.g. EEZ enforcement**
- **Living Marine Resources, e.g. fisheries enforcement**
- **Marine Environmental Protection**
- **Search and Rescue**
- **Marine Safety**
- **Aids to Navigation & Waterways Management**
- **Ice Operations**



**FY08 Budget Request:           \$8,726,302,000**

**Workforce: 42,000 military, 7,000 civilian, 8,000 Reserves & 32,000 Auxiliaries**



# National Policy/Directives

---

- **Maritime Transportation Security Act (MTSA)**
- **National Strategy for Maritime Security (NSMS)**
  - **Maritime Operational Threat Response (MOTR) Plan**
  - **Maritime Domain Awareness (MDA)**
  - **Global Maritime Intelligence Integration (GMII)**
- **HSPDs 5, 7 & 8**
- **NSPD 46 – GWOT Strategy (NIP)**
- **National Response Plan (NRP)**
- **White House – Hurricane Katrina Lesson Learned**



# Operational Trident

---

## Multi-Mission Shore Based Forces

Sectors & small boat stations



## Maritime Patrol and Interdiction Forces

Deepwater forces & aircraft

## Deployable Specialized Forces

Deployable Forces





# Deployable Operations Group Overview



**We will align Coast Guard deployable forces internally and then seek opportunities to integrate these forces with other DHS and Federal capabilities.”**

**-- Admiral Allen**

**Provide properly equipped, trained, and organized adaptive force packages to the USCG, DHS, DOD and interagency operational and tactical commanders.**

**-- DOG Mission Statement**

## **DOG HQ**

- 101 personnel (HQ Arlington, VA) – IOC 20 Jul 07

## **Functions**

- **Force Provider to Operational Commanders:** Responsible for providing adaptive force packages; coordinate & execute all deployments.
- **Force Manager for DSFs:** Responsible for standardizing the manning, equipping, and training all deployable, specialized forces.
- **Develop Partnerships:** Integrate and include Coast Guard, DHS, DoD, and other interagency partners in executing DOG responsibilities.

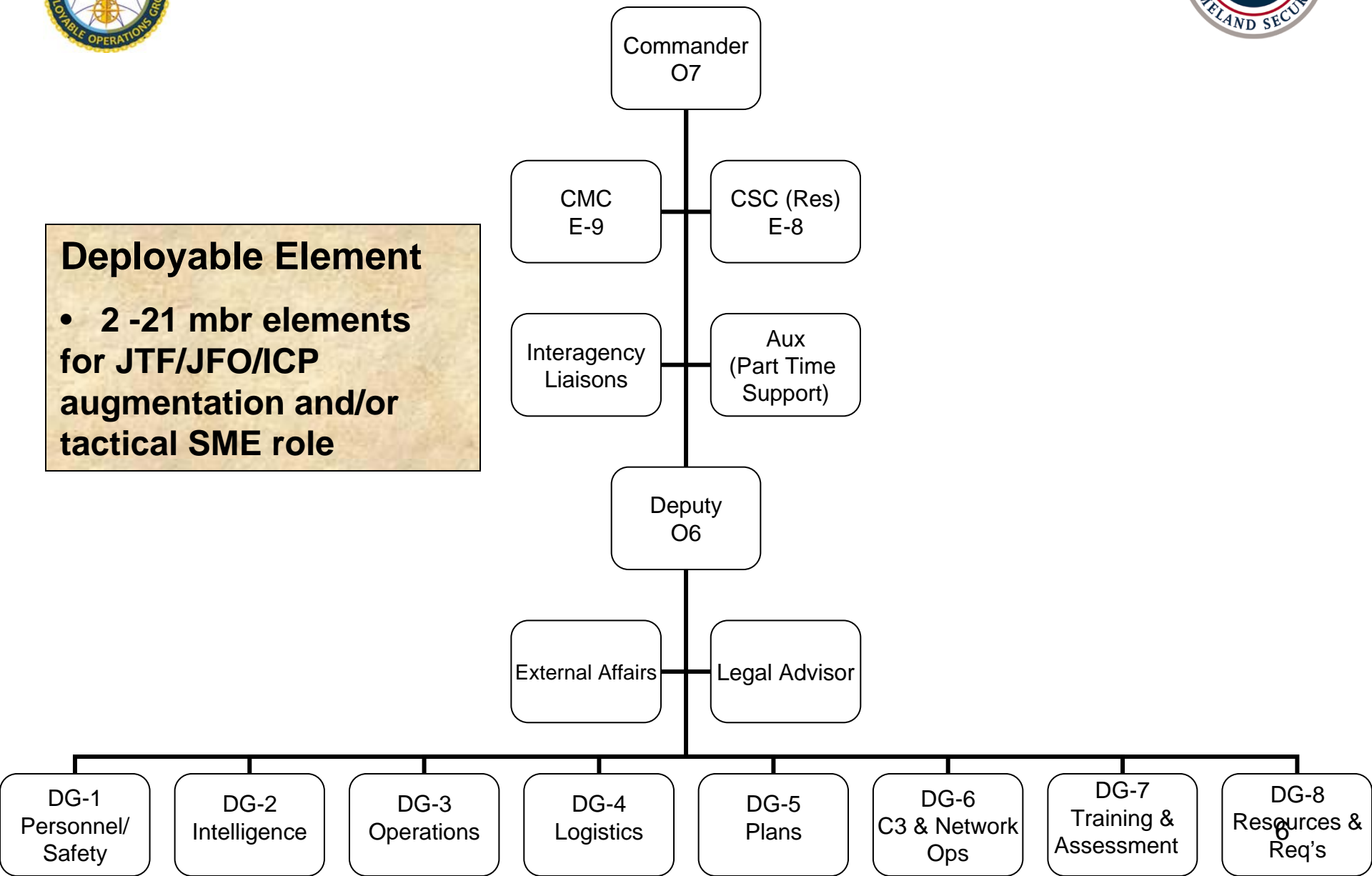


# DOG Organizational Structure



**Deployable Element**

- 2 -21 mbr elements for JTF/JFO/ICP augmentation and/or tactical SME role





# Maritime Security Response Team (MSRT)



- 1 unit / 213 personnel
- Advanced Interdiction and Counter-Terrorism (CT)
- Special Capabilities: Waterside Security, Tactical MLE/FP teams, Airborne Use of Force (AUF), K9, CBRNE
- Special Training: CQC, Tactical Operator Courses, Vertical Insertion (VI), Precision Marksman, Tactical Coxswain, EMT

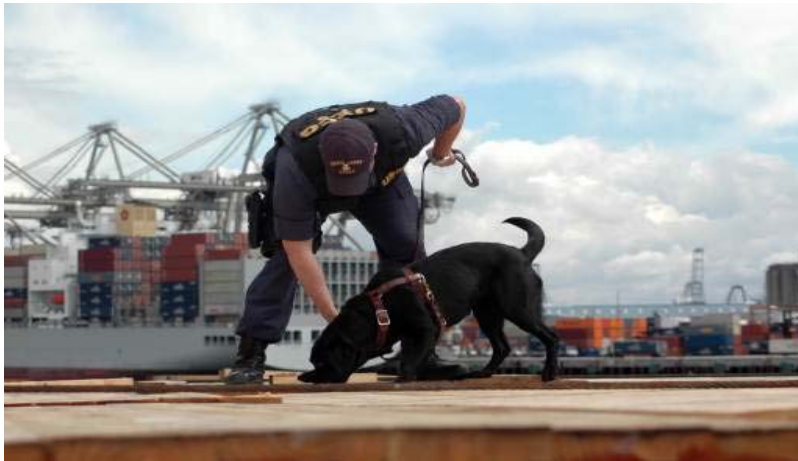




# Maritime Safety and Security Teams (MSST)



- 12 Units / 1,055 personnel
- Port, Waterways, & Coastal Security
- Anti-Terrorism
- Special Capabilities: Waterside Security, Tactical MLE/FP teams, K9, Dive, Remote Operated Vehicles (ROV), Integrated Anti-Swimmer
- Special Training: CQC, Tactical Operator Courses, VI, Tactical Coxswain, EMT







# Tactical Law Enforcement Teams (TACLET)



- 2 units / 189 personnel
- Drug Interdiction
- Maritime Interception Operations
- Unit & International Training
- Special Capabilities: AUF, Unannounced Night-Time Boardings (UNB)
- Special Training: CQC, Tactical Operator Courses, VI, Precision Marksman, Ion Scan, Container Climbing, EMT, Linguist, Flight Observer





# Port Security Unit (PSU)



- 8 units / 1,025 personnel
- Reserve Force
- Primarily Expeditionary Port Security
- Special Training: PSU Basic Skills Course, Tactical Coxswain, Aircraft Load Planner, Combat Casualty Care, EMT





# National Strike Force (NSF)

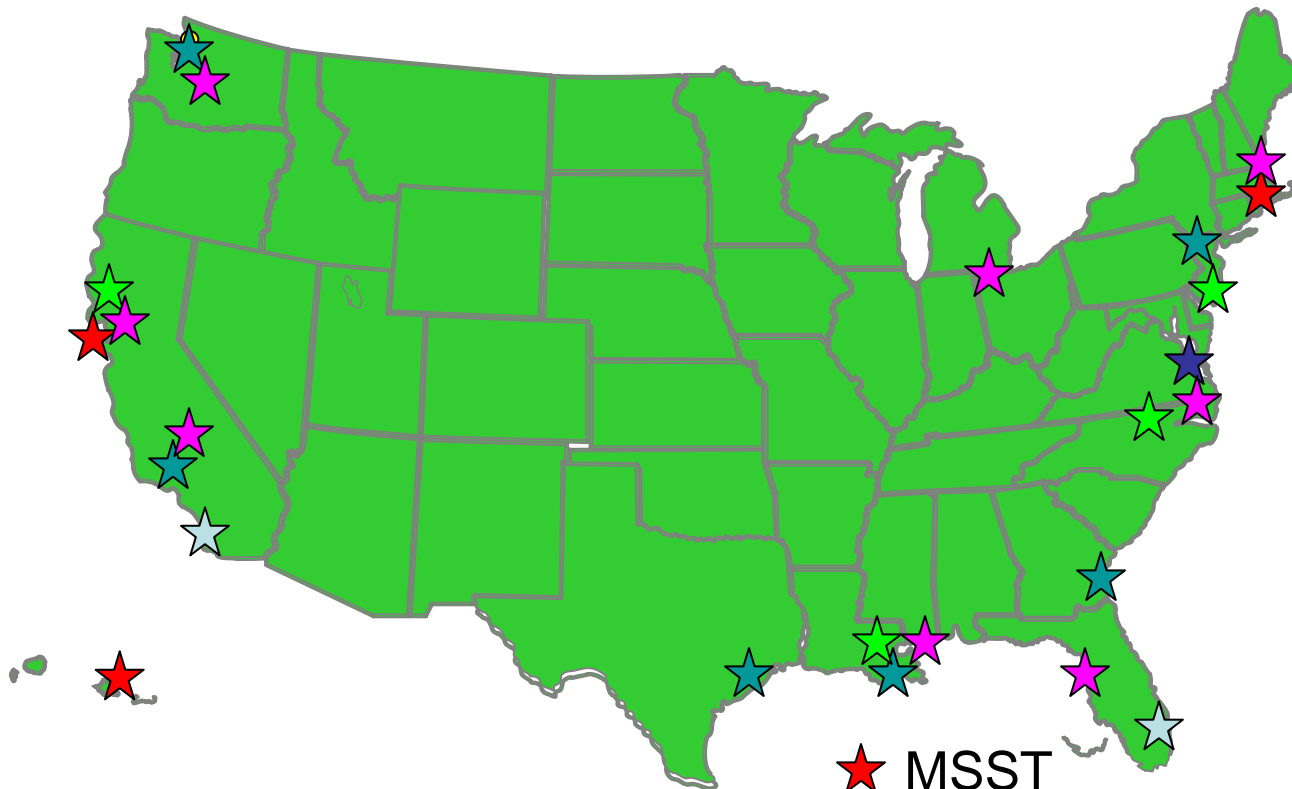







- **3 Strike Teams – 225 Personnel**
- **National Strike Force Coordination Center (NSFCC) – 30 Personnel**
- **Domestic and International: Oil, Hazmat, Chemical, Biological, Radiological Response, Salvage**
- **Special Training: Hazmat Tech, Level II RAD, CDL, EMT, ATV, Booming Techniques, WMD Tech, Salvage Operations, Comms Tech, Crisis Communications**





# Force Locations

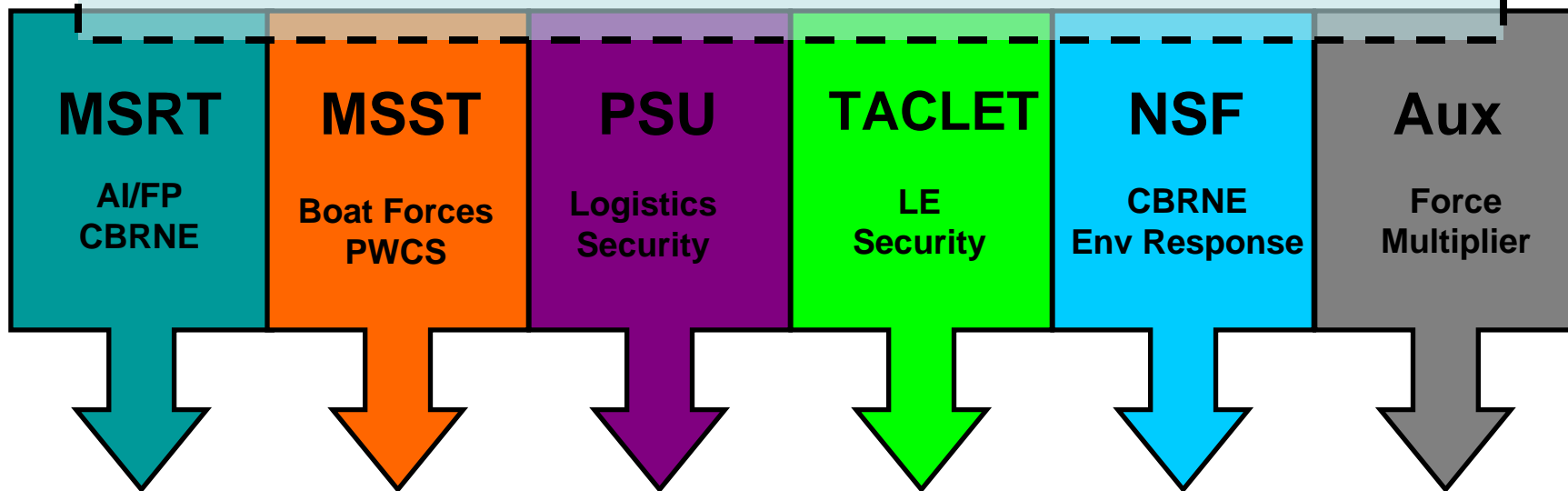


-  MSST
-  MSST & TACLET
-  MSRT
-  PSU
-  NSF CC & Strike Team



# USCG Adaptive Force Package

## DOG Deployable Element & Logistics Support



**TAILORED ADAPTIVE FORCE PACKAGE**



# DHS Adaptive Force Package Doctrine

Operationalize DHS component integration concepts

Deployable Element & Logistics Support

TSA

USCG

CBP

FEMA

USSS

ICE

**DHS ADAPTIVE FORCE PACKAGE**

*All Hazards...All Threats*



# Integration & Interoperability

---

## U.S. Coast Guard Global Roles

- **Maritime Safety (Port State Control, International Ship & Port Facilities (ISPS) Code, etc.)**
- **Patrol Boat & Small Boat Expertise**
- **Boarding Expertise**
- **Interagency Coordination**
- **Maritime Security**
- **National Incident Management (preparedness to response)**
- **Military Outload Security**
- **HAZMAT & Environmental Response**
- **Maritime Constabulary Force (e.g. drug/human smuggling, resource exploitation, piracy)**
- **WMD Counter-Proliferation (PSI)**
- **International Engagement – World’s Navies/Coast Guards akin to USCG**
- **International Training**

***Title 10/14 Authority Value – bilingual military/law enforcement***



# Where Industry Can Help

---

## Capability/Technology Initiatives

- Integrated Anti-Swimmer Detection
- CBRNE Detection/Triage Capability
- Tactical Delivery Platforms
- Network Sensors/Tracking
- Network Communications (response/recovery)
- Non-Lethals (stop vessels/suppress individuals)
- Boarding Equipment
- Future weapons/ammo
- Biometrics





---

## ***The DOG is on the hunt...Semper Paratus***

