

---

# **Overview of Sandia National Laboratories Robotic Demil Projects**

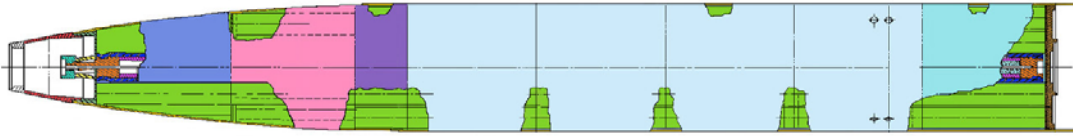
**Walter Wapman,  
Sandia National Laboratories  
May 16, 2007**

# Presentation Outline

---

- **MLRS Warhead Download Workcell**
  - **Warhead Disassembly System**
  - **Grenade Removal System**
  - **Fuze Removal System**
- **Hawthorne CBU Download Workcell**
- **ADAM 155mm Projectile Download Workcell**

# MLRS Warhead Foam Packs and Hardware



Grenades



644 grenades  
in a warhead.  
375,000  
warheads to  
demil

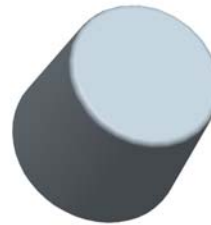
Spacer Rings



2

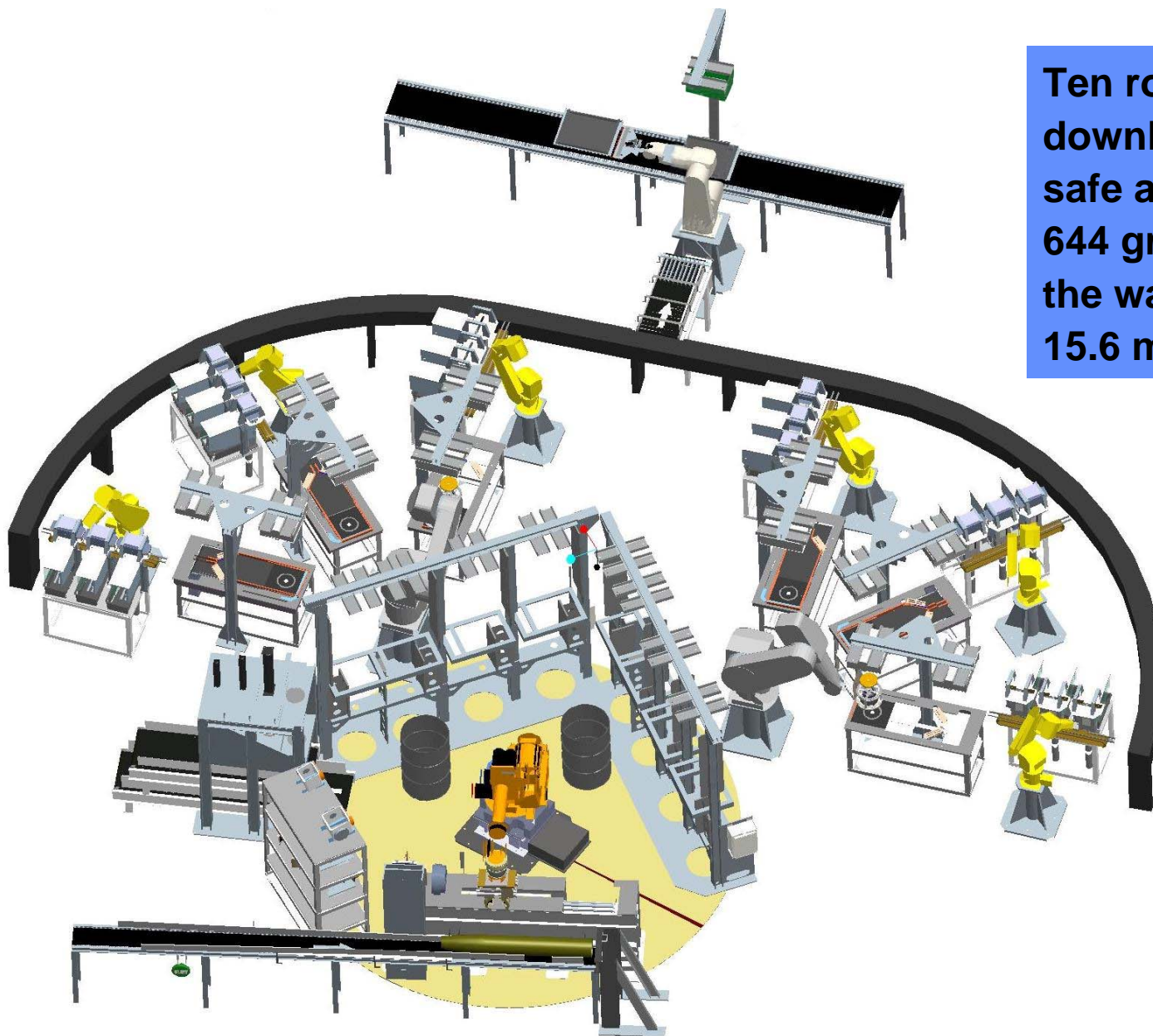
8

Caps



# Automated MLRS Warhead Download Workcell

Ten robots will download, inspect, safe and package 644 grenades from the warhead every 15.6 minutes.



# Warhead Disassembly System

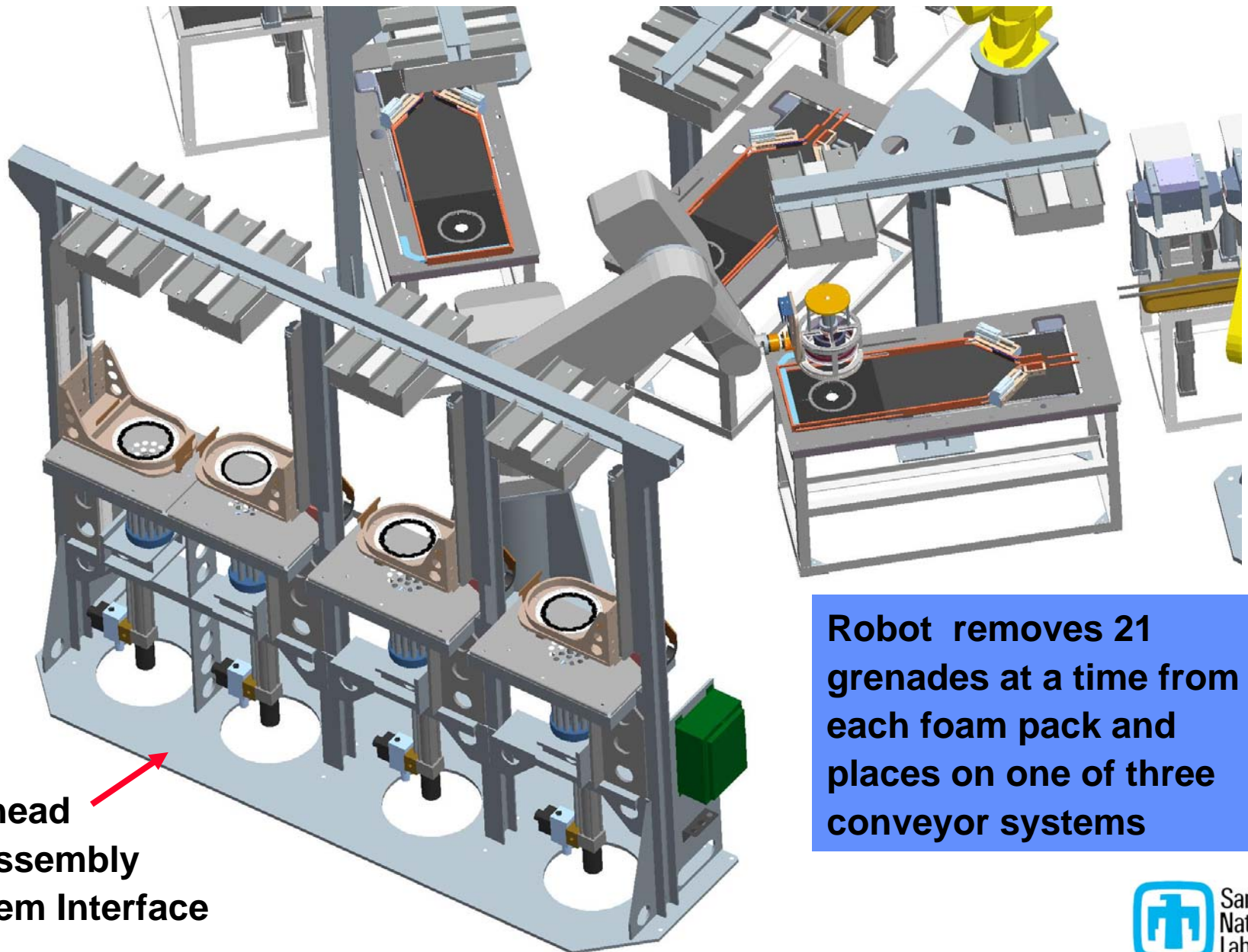
1. Chipless machining partitions the warhead into foam packs.

2. Robot distributes foam packs for grenade unloading.

Grenade Removal System #2 Interface

Grenade Removal System #1 Interface

# Grenade Removal System #1

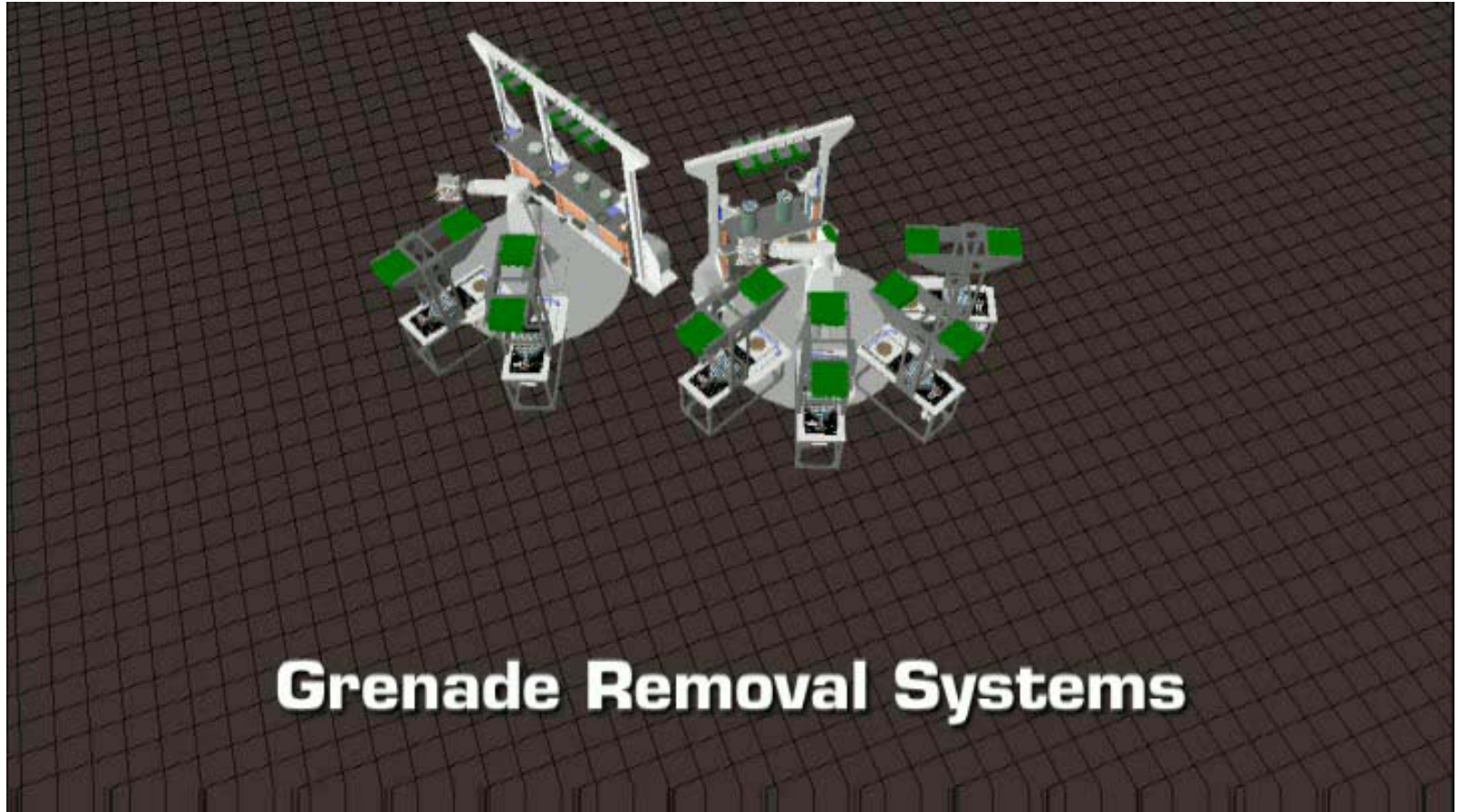


**Warhead  
Disassembly  
System Interface**

**Robot removes 21  
grenades at a time from  
each foam pack and  
places on one of three  
conveyor systems**

# Grenade Removal Operations

---



**Grenade Removal Systems**

# Fuze Removal Systems 1 - 3

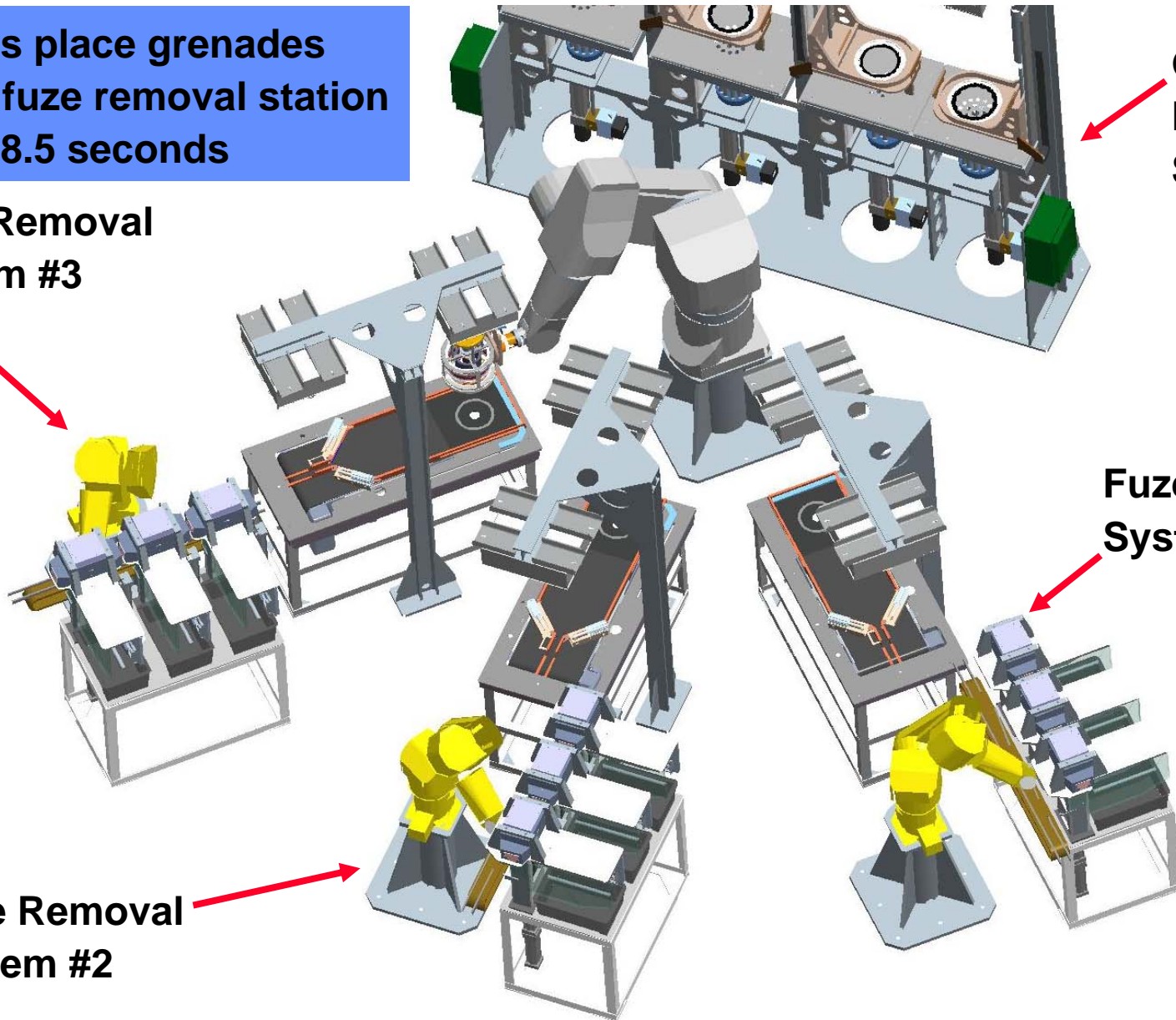
Robots place grenades into a fuze removal station every 8.5 seconds

Fuze Removal System #3

Grenade Removal System #1

Fuze Removal System #1

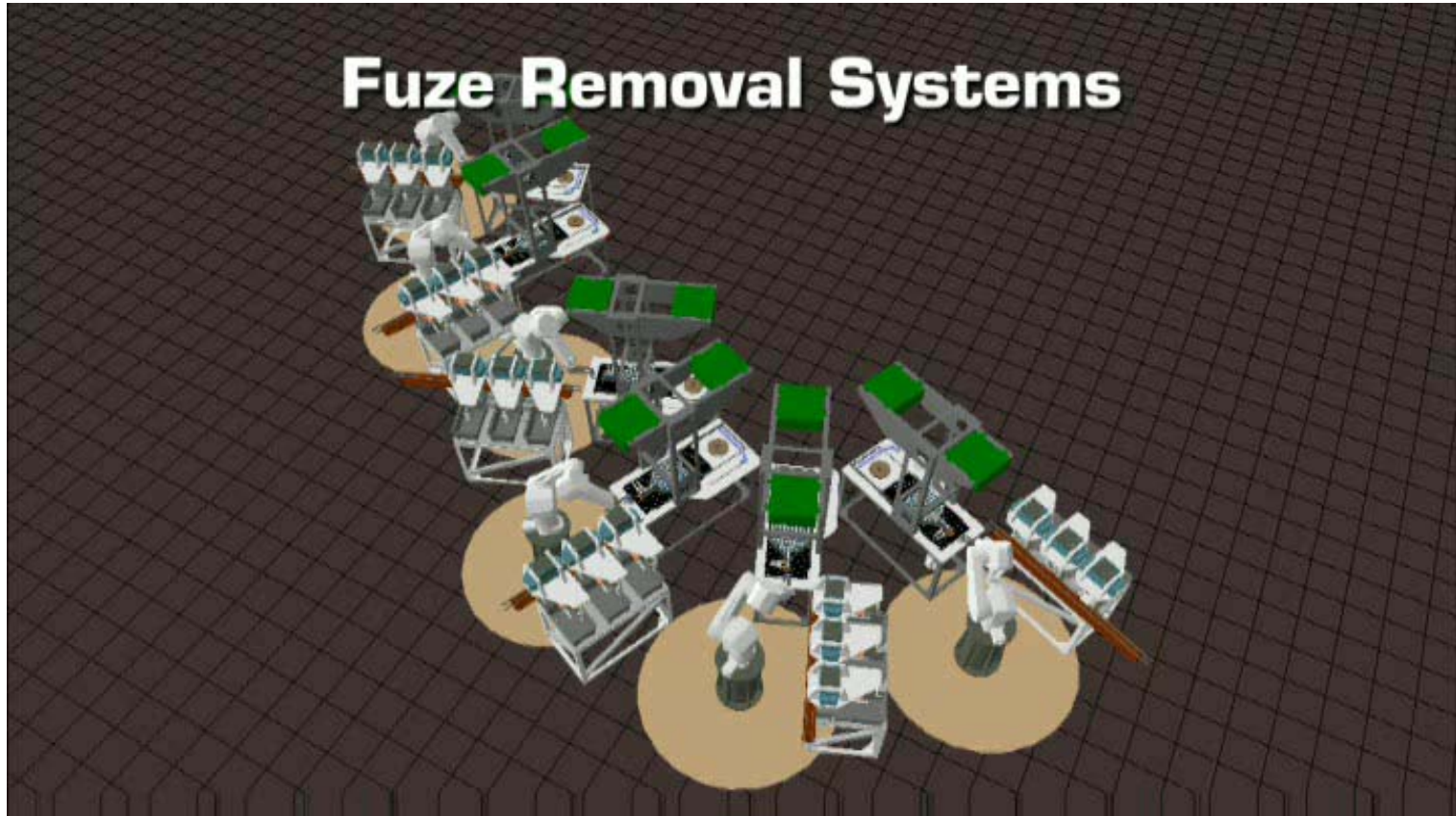
Fuze Removal System #2



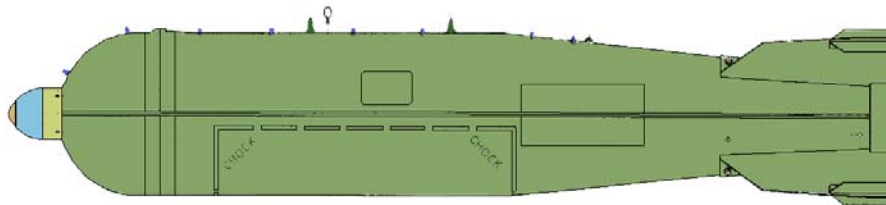
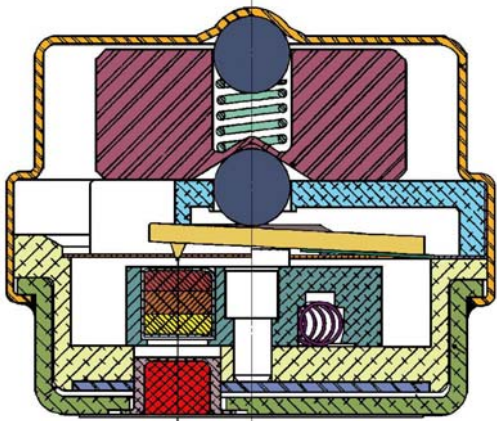


# Fuzeze Removal Operations

---

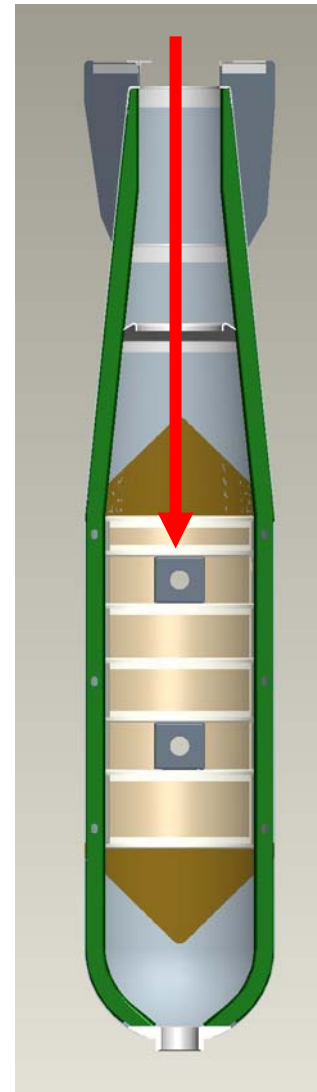
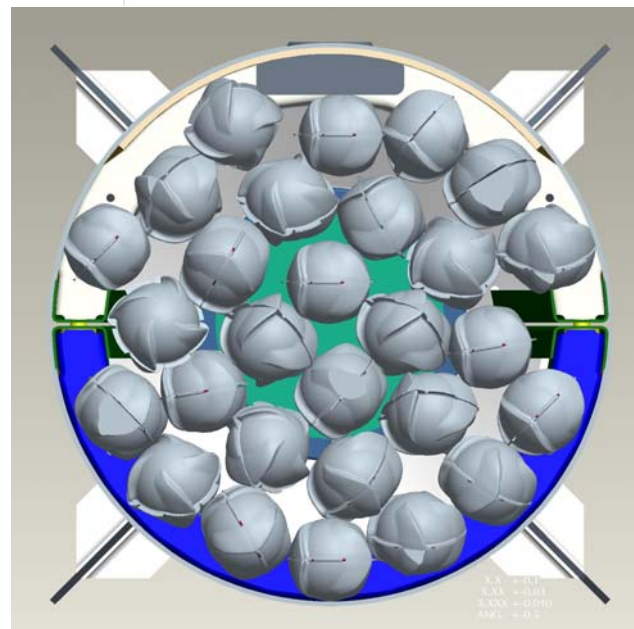
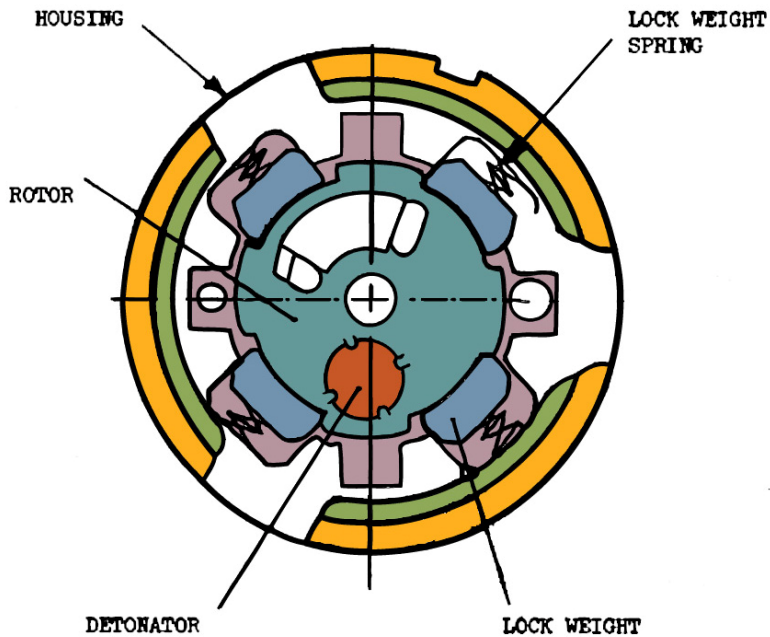


# Cluster Bomb Unit (CBU) Assembly and Issues

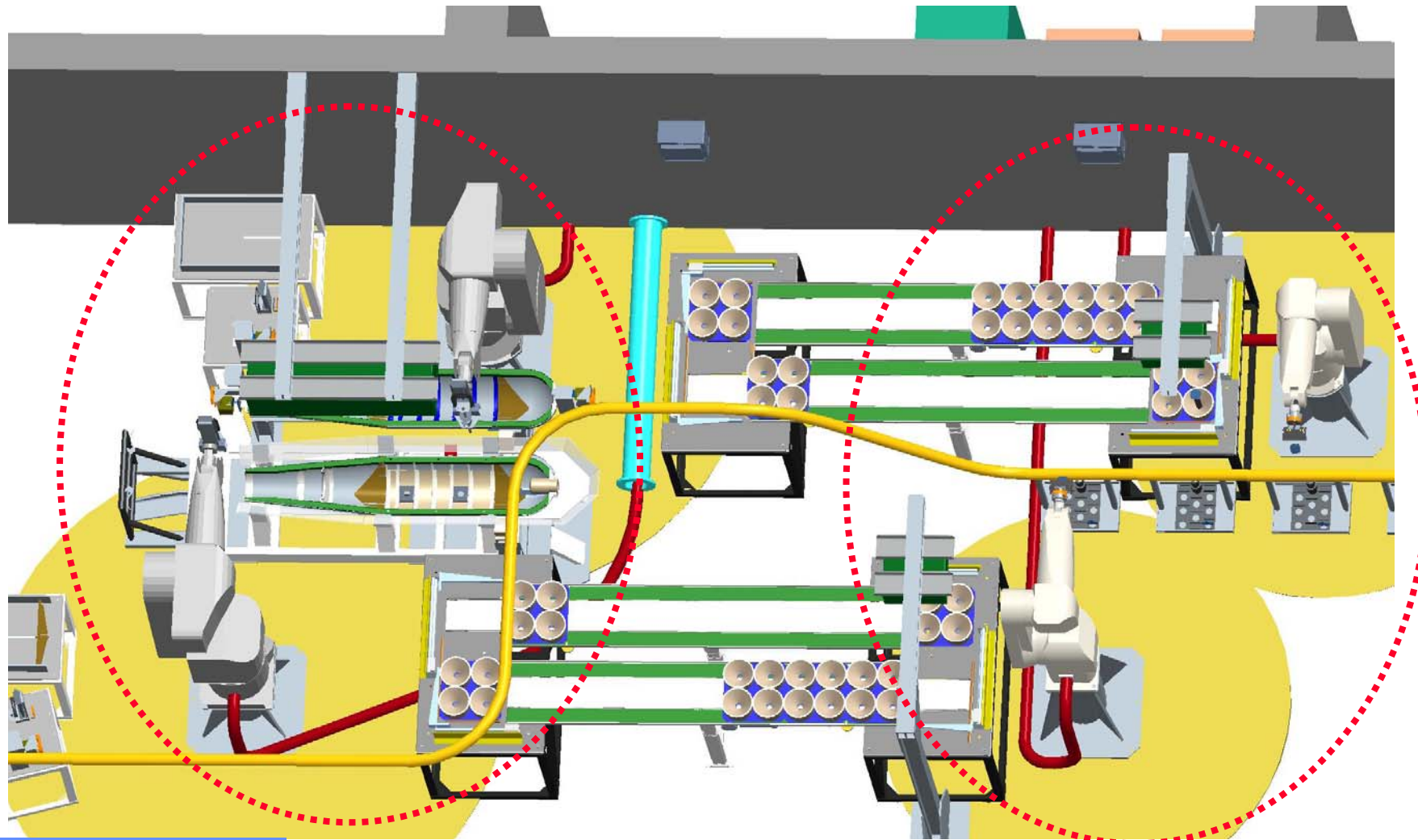


G9102949

Figure 2-5. BLU-43/B, BLU-43A/B, BLU-43/B, and BLU-43A/B



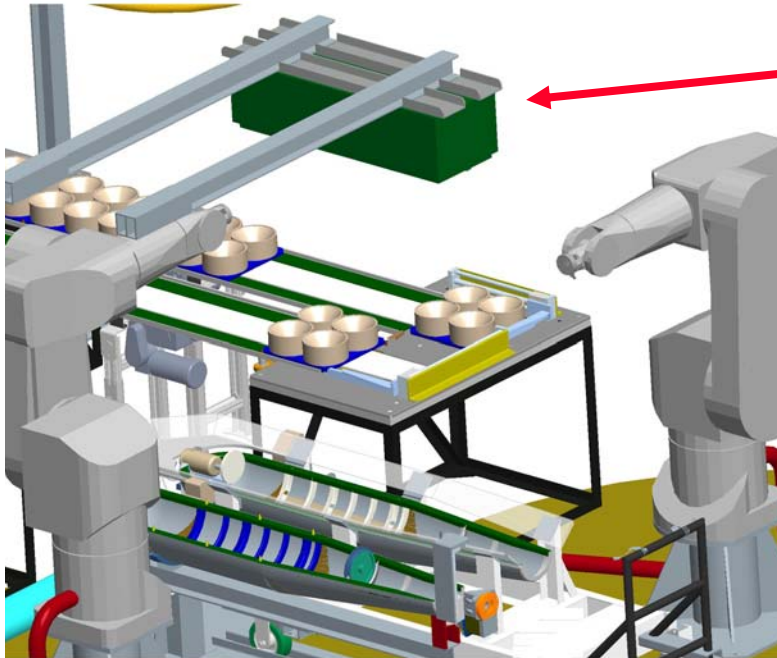
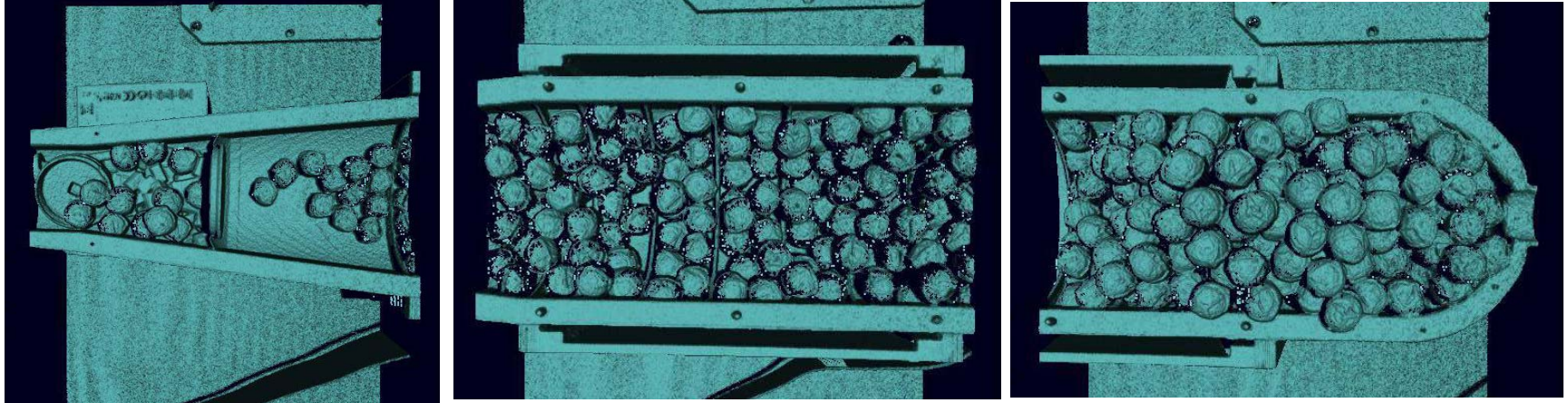
# CBU Download Workcell



**Open dispenser  
and unload**

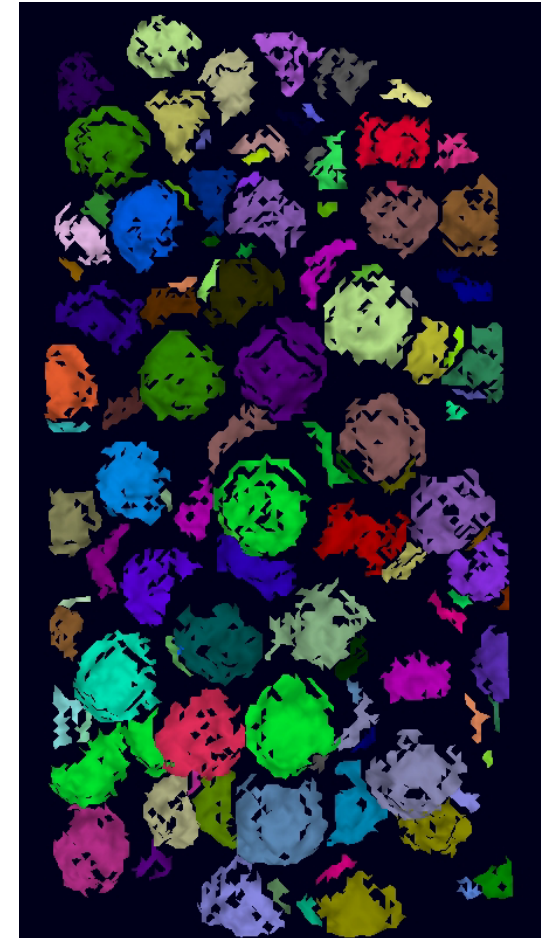
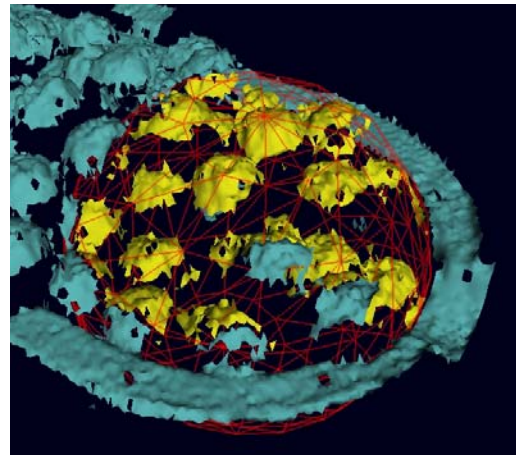
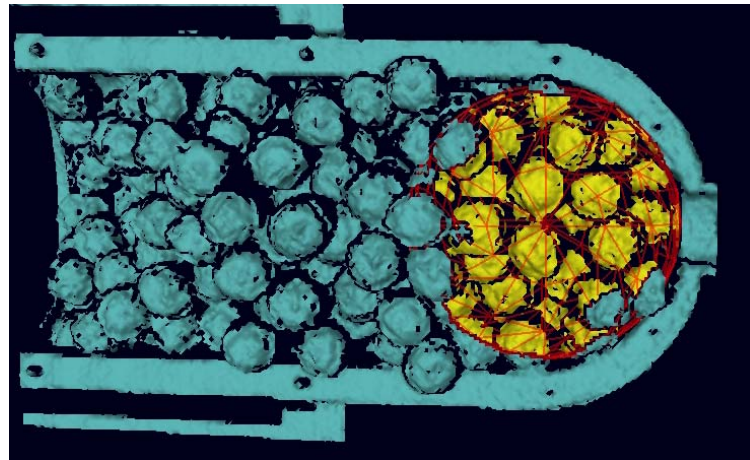
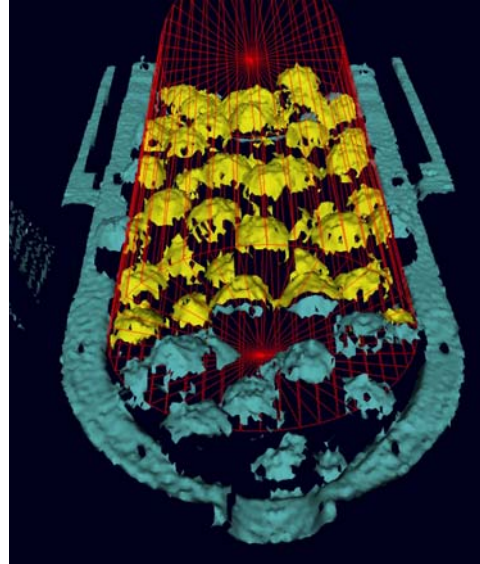
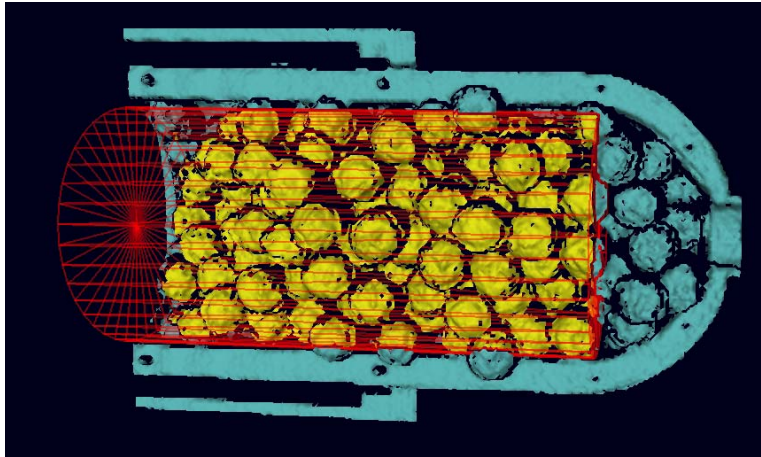
**Orient bomblet and place in  
Fixture Separation Station**

# 3D Laser Scan of dispenser



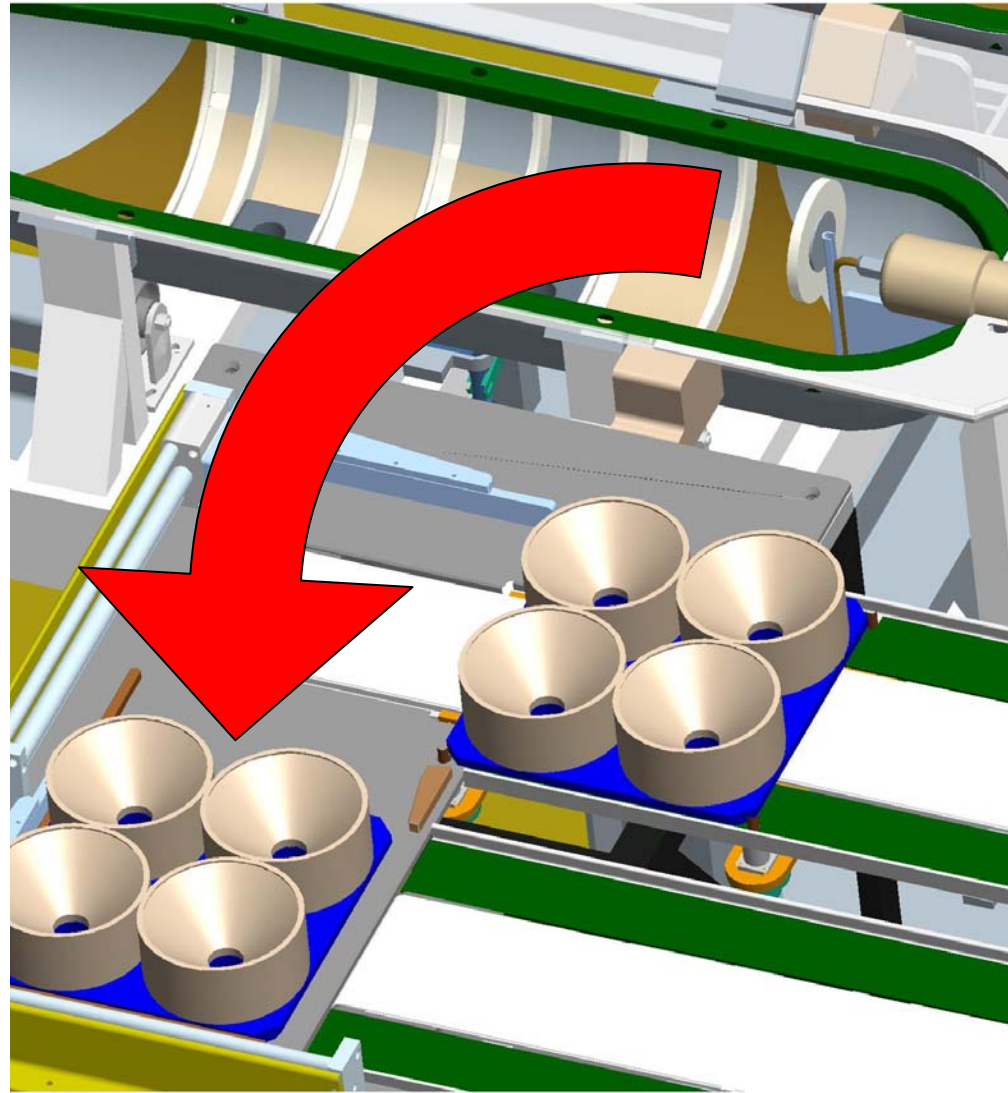
1. The camera box contains a 3D Laser Scanner System, cameras and lights.
2. The laser scanner is eye safe and provides cloud data for analysis.

# Cylindrical and Spherical Data Filters for Data Extraction



# Bombulet Removal Robot

- Vision system provides x, y, z contact location of next bombulet to remove and dispenser offset location in workcell.
- Automated path planning is used to pick up the bombulet based on vision data and bombulet location in dispenser.
- Robot places bombulet in one of 4 pallet pockets based on thru beam sensor information

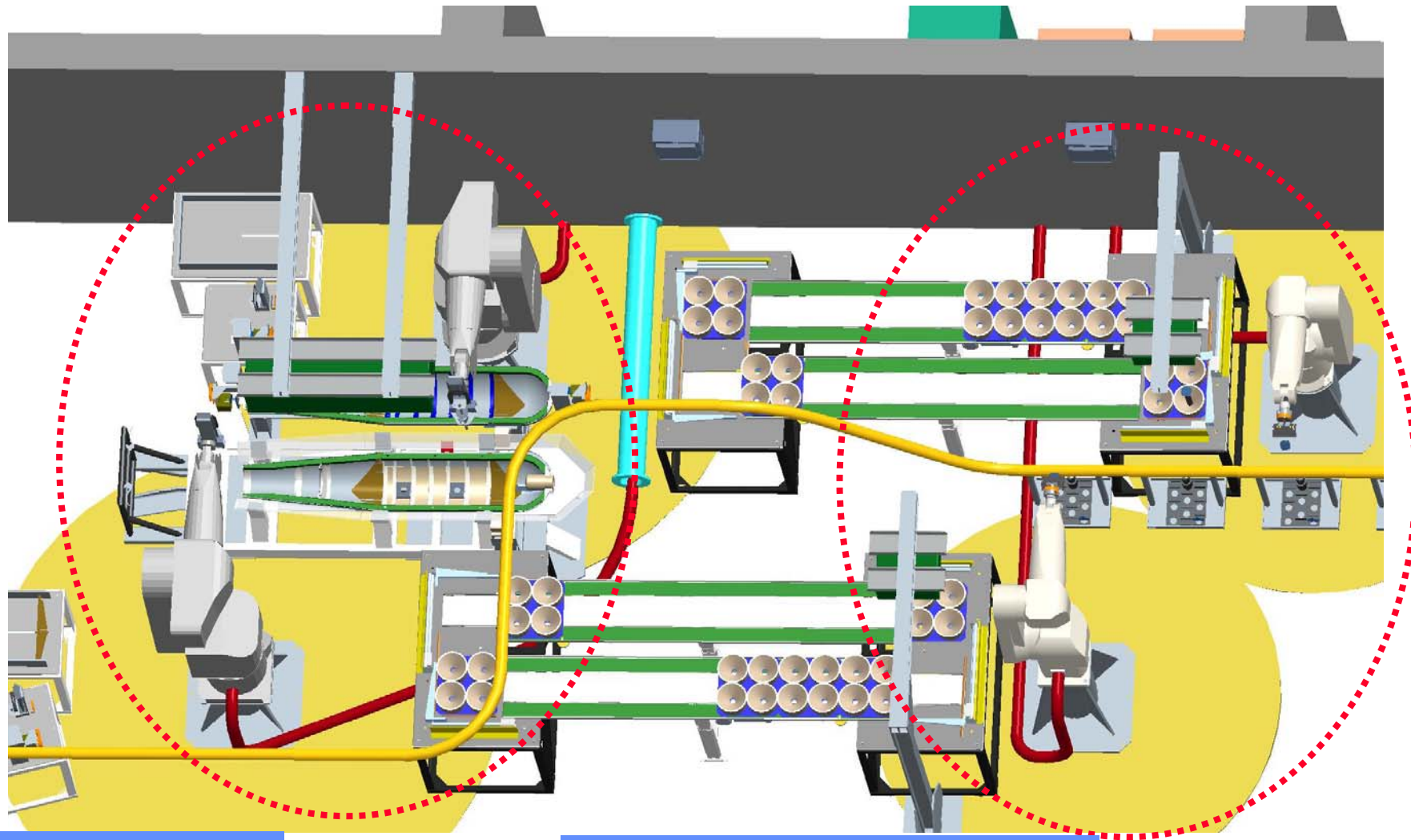


# CBU Unloading Laser Scanner / Robot Integration

---



# CBU Download Workcell



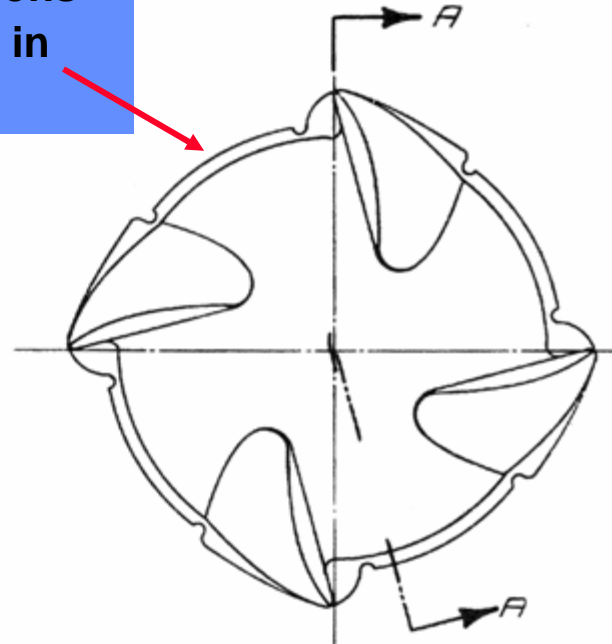
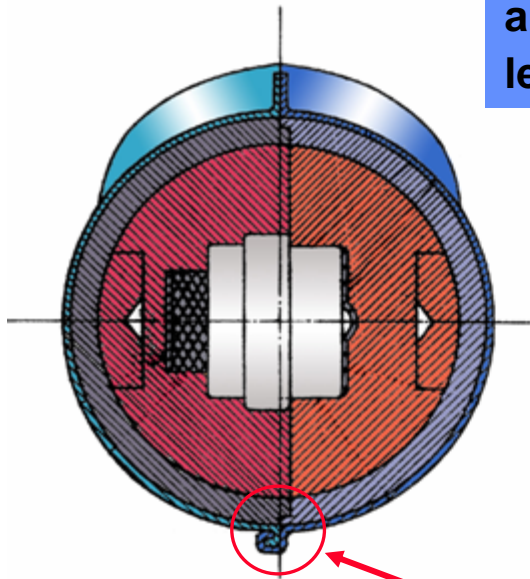
**Open dispenser  
and unload**

**Orient bomblet and place in  
Fixture Separation Station**

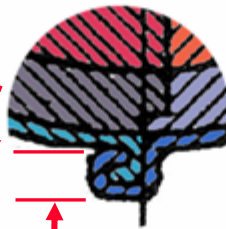


# Tab Folding Assembly

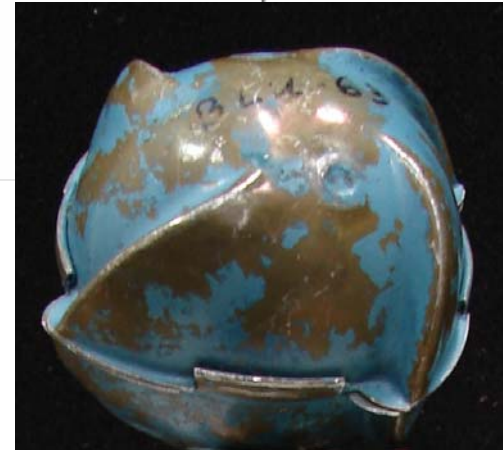
Four tab fold locations  
approximately 7/8" in  
length



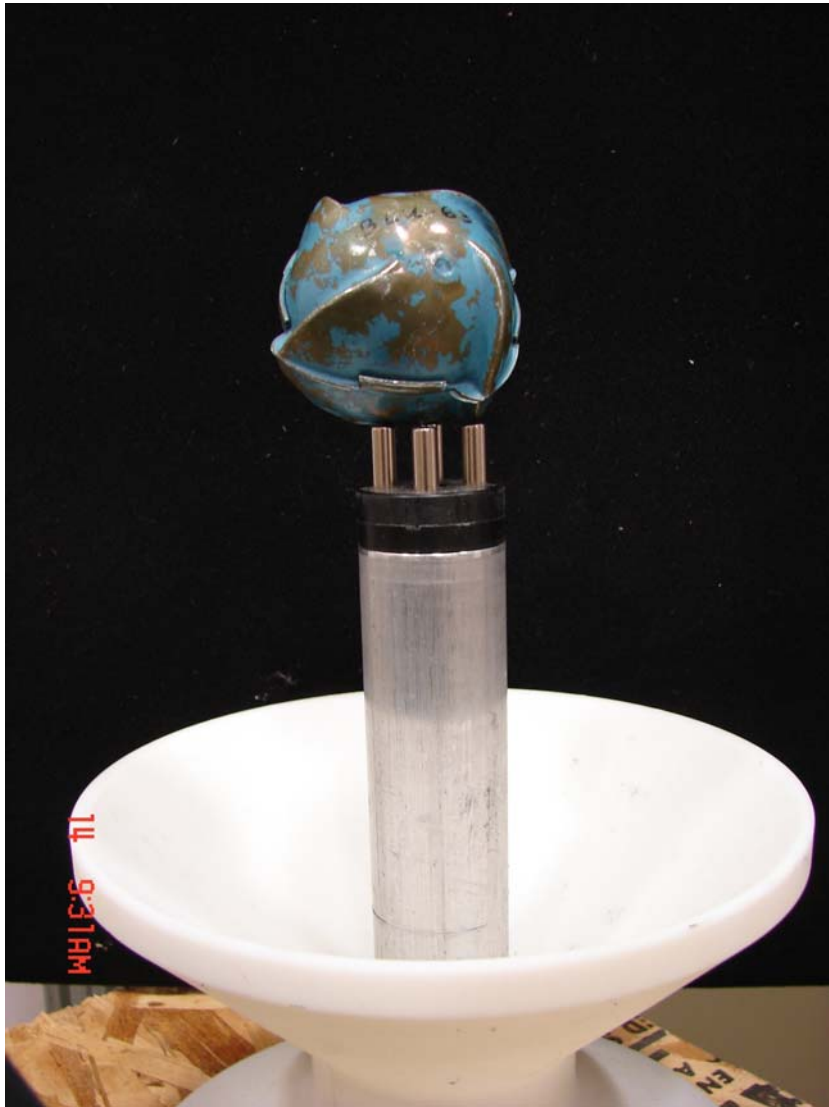
Maximum shell thickness  
is 0.023" and has a  
maximum yield strength of  
34,800 psi.



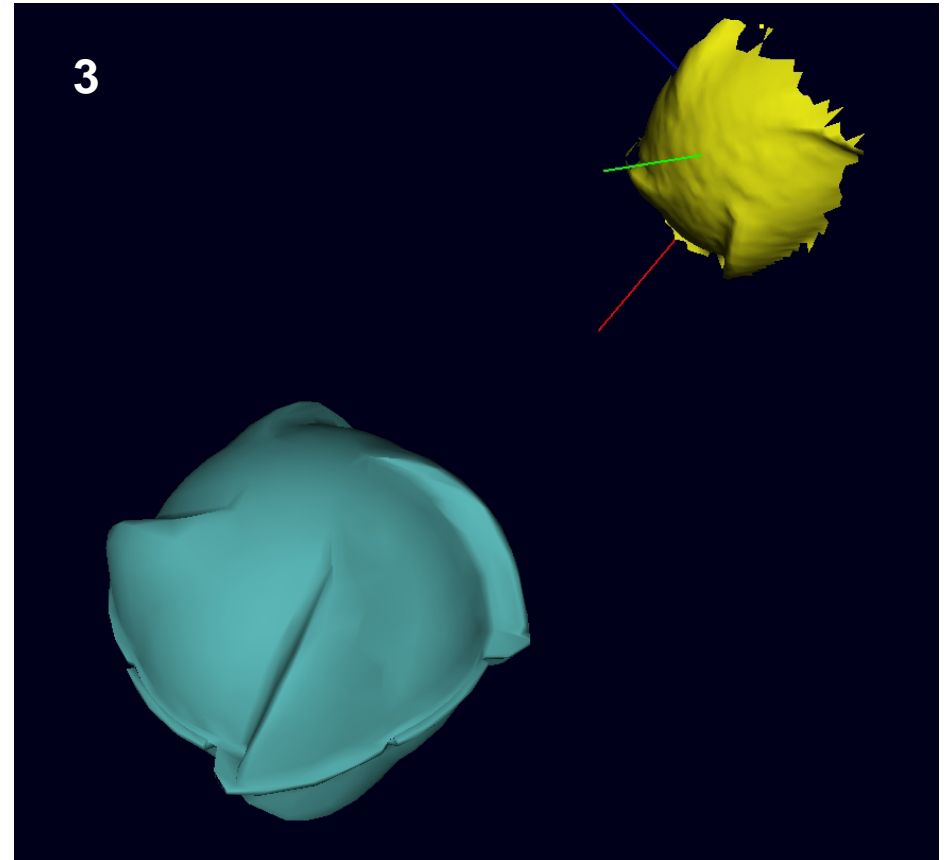
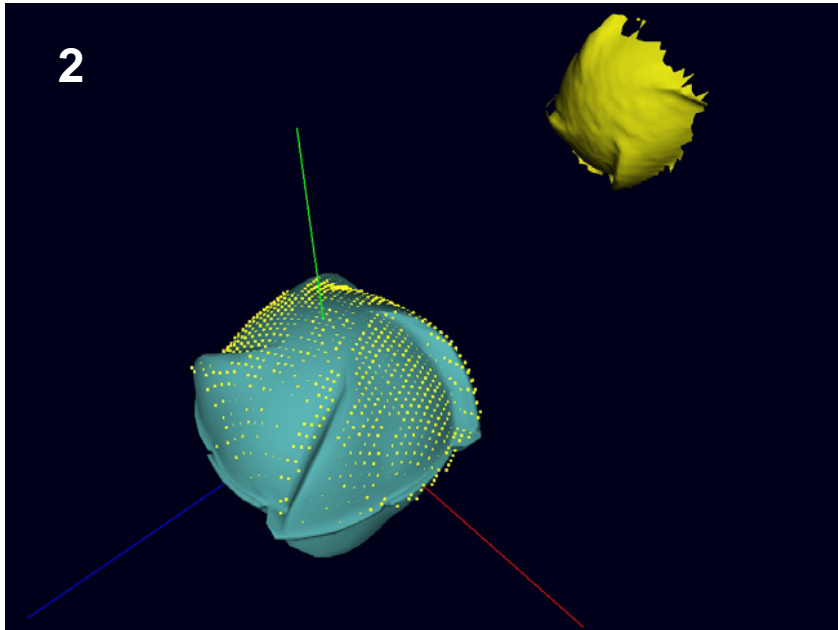
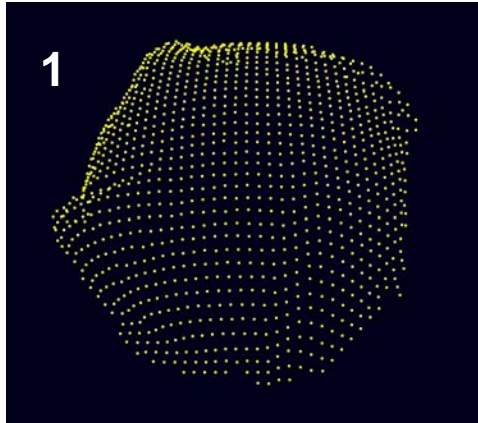
0.085"



# Raised Positions Are Random and Stable



# Locating & Orienting Bomblet



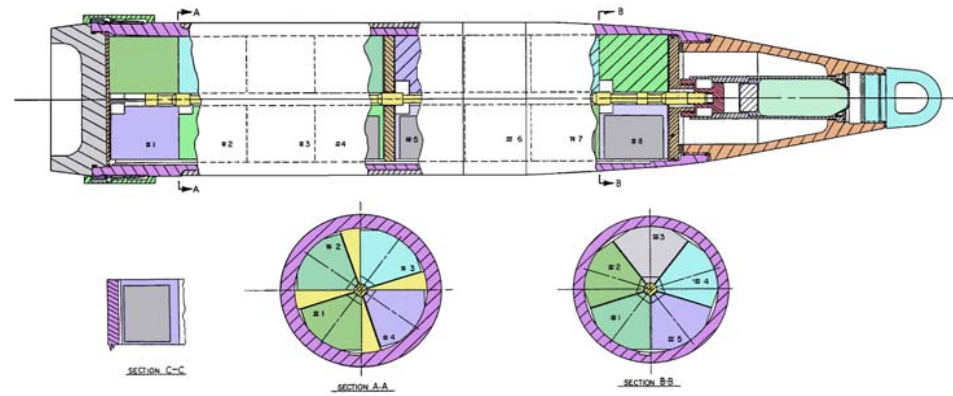
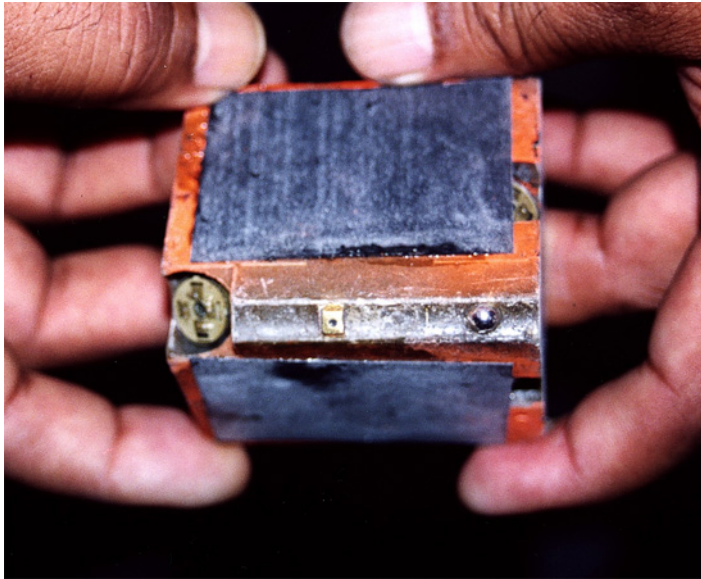
# Automated Path Planning for Robot Pick Operation



# ADAM Projectile Download Workcell

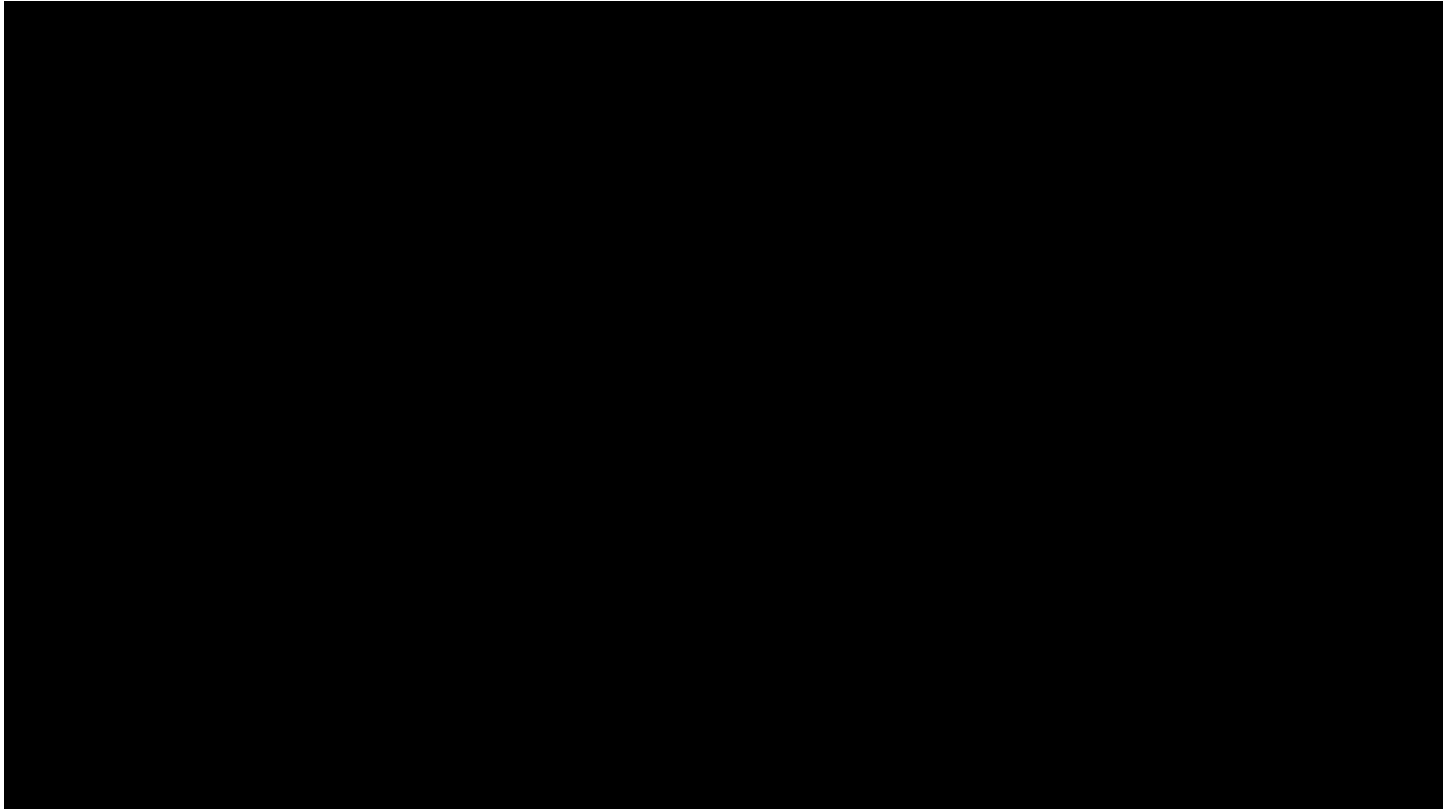


# ADAM Mine and ICM Projectile



# Projectile Download Workcell

---



- 
- **Walter Wapman**
    - **Sandia National Laboratories**
    - **505-844-9761**
    - **[wwapman@sandia.gov](mailto:wwapman@sandia.gov)**