

This Brief is Classified:
UNCLASSIFIED



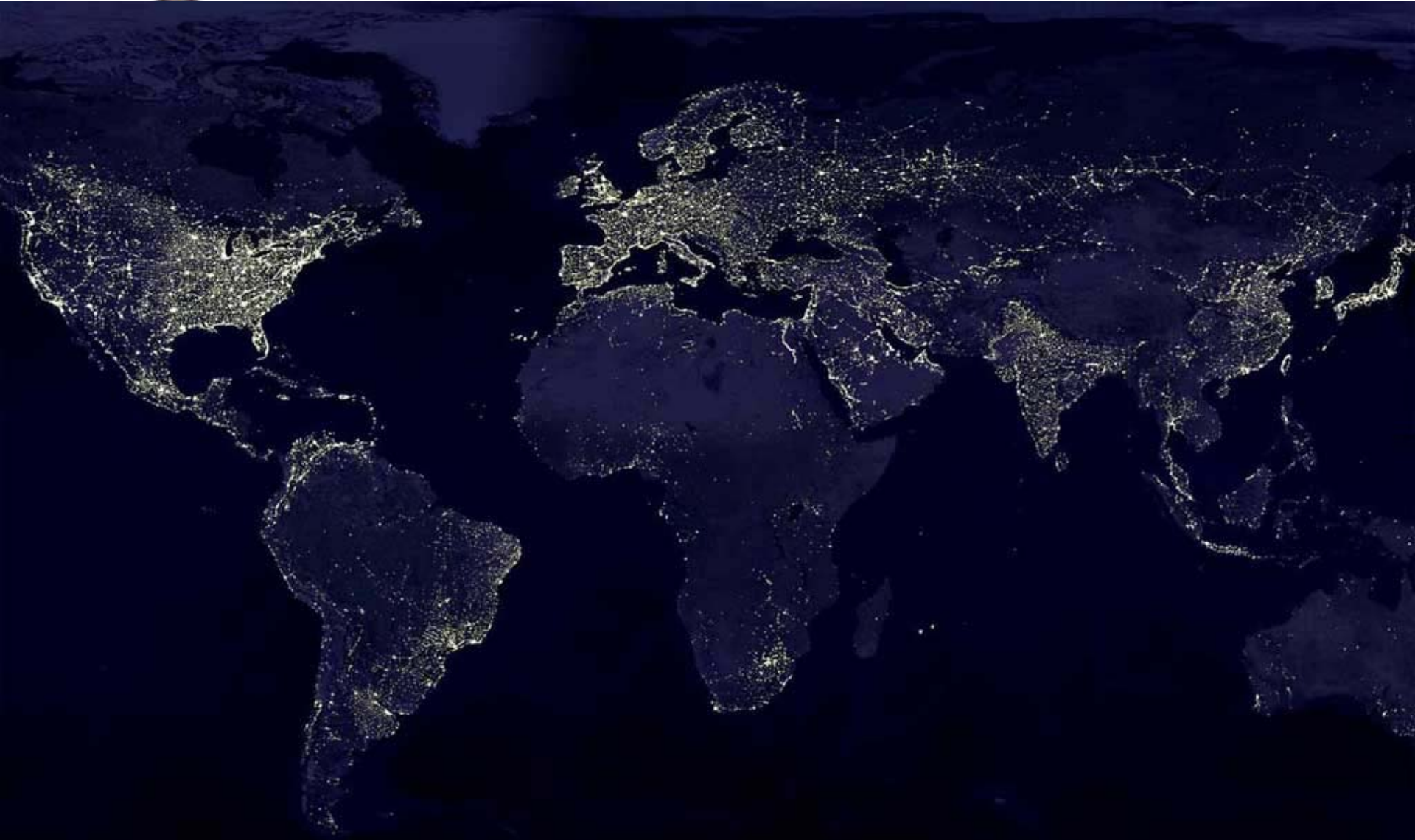
Joint Task Force Civil Support

Command Brief

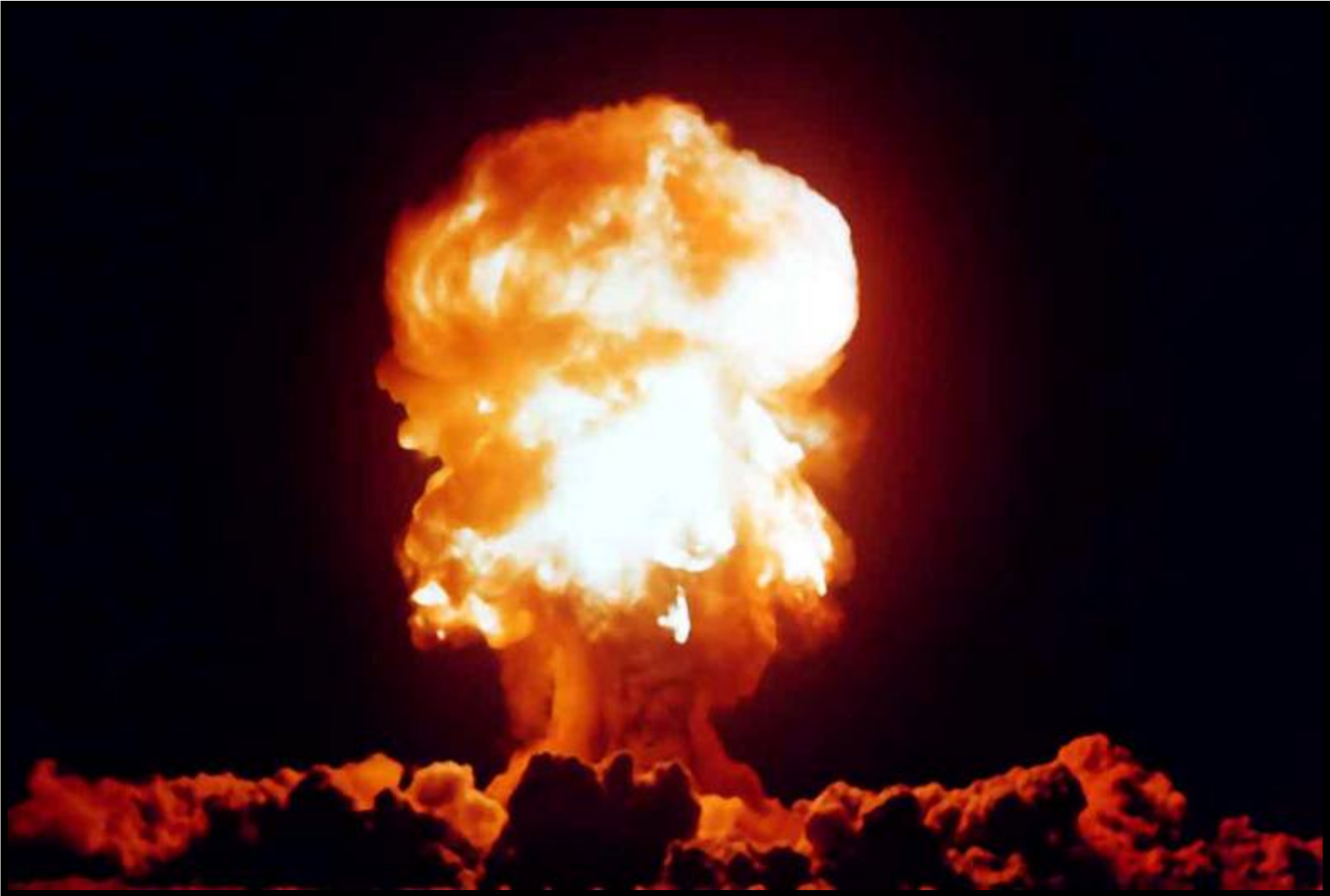


UNCLASSIFIED

Dark to Light



Catastrophic Concerns





"In my opinion, the prospects of a future attack against the United States are almost certain. ***It's not a matter of if, but when.***"

Vice President Dick Cheney



...A Matter of When





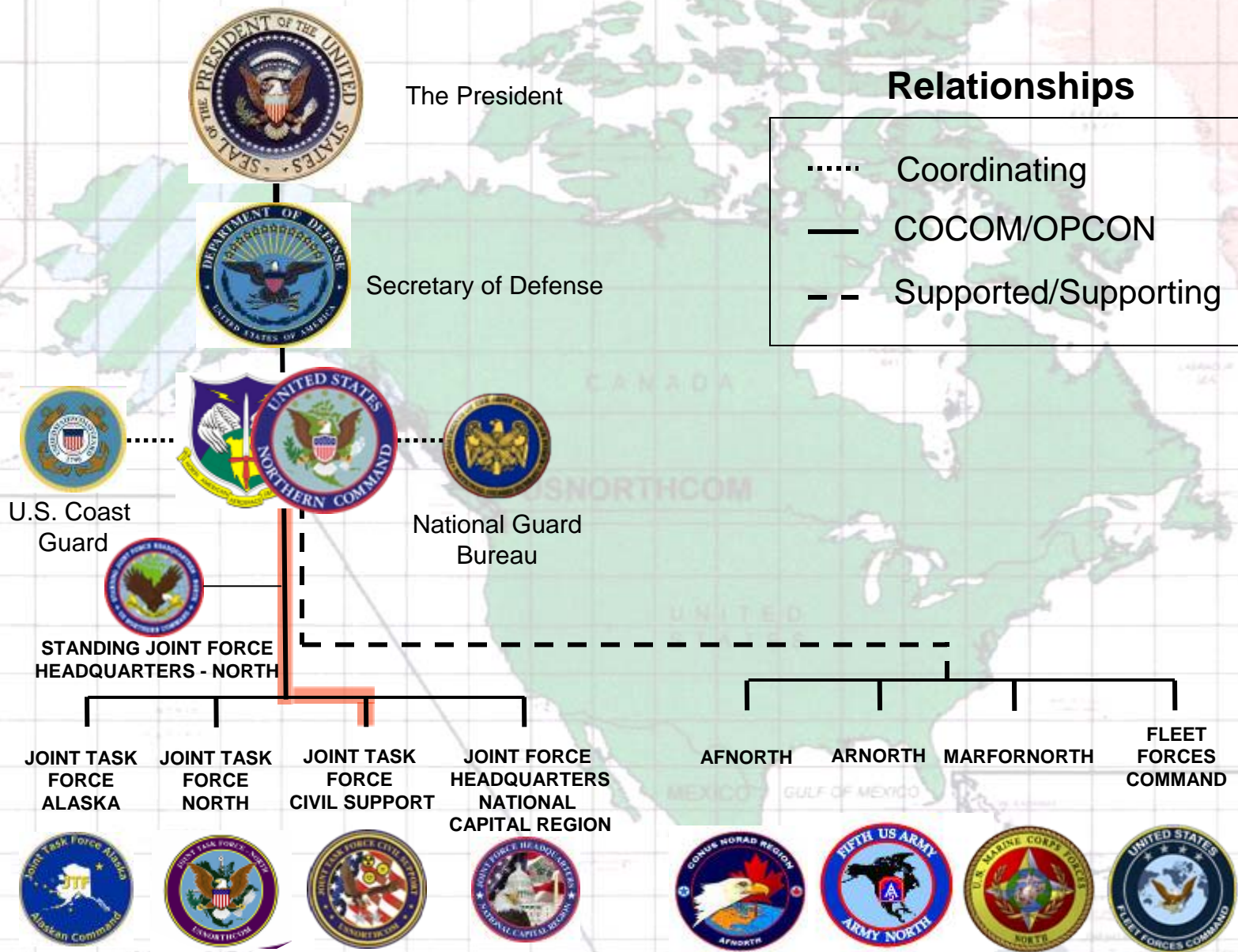
***USNORTHCOM* Mission Statement**

USNORTHCOM *anticipates* and conducts Homeland Defense and Civil Support operations within the assigned area of responsibility to *defend, protect, and secure* the United States and its interests



USNORTHCOM Organization Chart

Geographical Combatant Command





“It is bringing **capability** and **capacity** at the **right time** at the **right place**, not overwhelming the receiving state, but bringing in **something that is sorely needed...the governor is the commander in his or her state.**” “...not too soon, but not a second too long...”

General Victor E. Renuart Jr.
Commander
NORAD & USNORTHCOM



Types of Incidents



JTF-CS Mission

JTF-CS **anticipates, plans and integrates** USNORTHCOM Chemical, Biological, Radiological, Nuclear, and high-yield Explosive (CBRNE) Consequence Management operations and **when directed**, establishes command and control of DoD forces for a CBRNE incident to **assist** local authorities in saving lives, preventing injury, and providing temporary critical life support





JTF-CS Structure



Commander 

Senior Enlisted 

Executive Assistant 

Legal 

Public Affairs 

Medical 

Chaplain 

Deputy Commander 

Chief Of Staff 



J1 Personnel 

J2 Intelligence 

J3 Operations 

J4 Support 

J5 Planning 

J6 Communications 



Area of Responsibility

JTF-CS provides CBRNE planning, exercise, and response support within the U.S., its territories, and possessions

USPACOM

- Hawaii
- Guam
- American Samoa
- Commonwealth of Northern Mariana Islands
- Federated States of Micronesia, Marshall Islands, and Palau

USNORTHCOM

CONUS and Alaska



SOUTHCOM

- Puerto Rico
- US Virgin Islands

- Big Country
- Lots of POC's
- Diverse/Varied

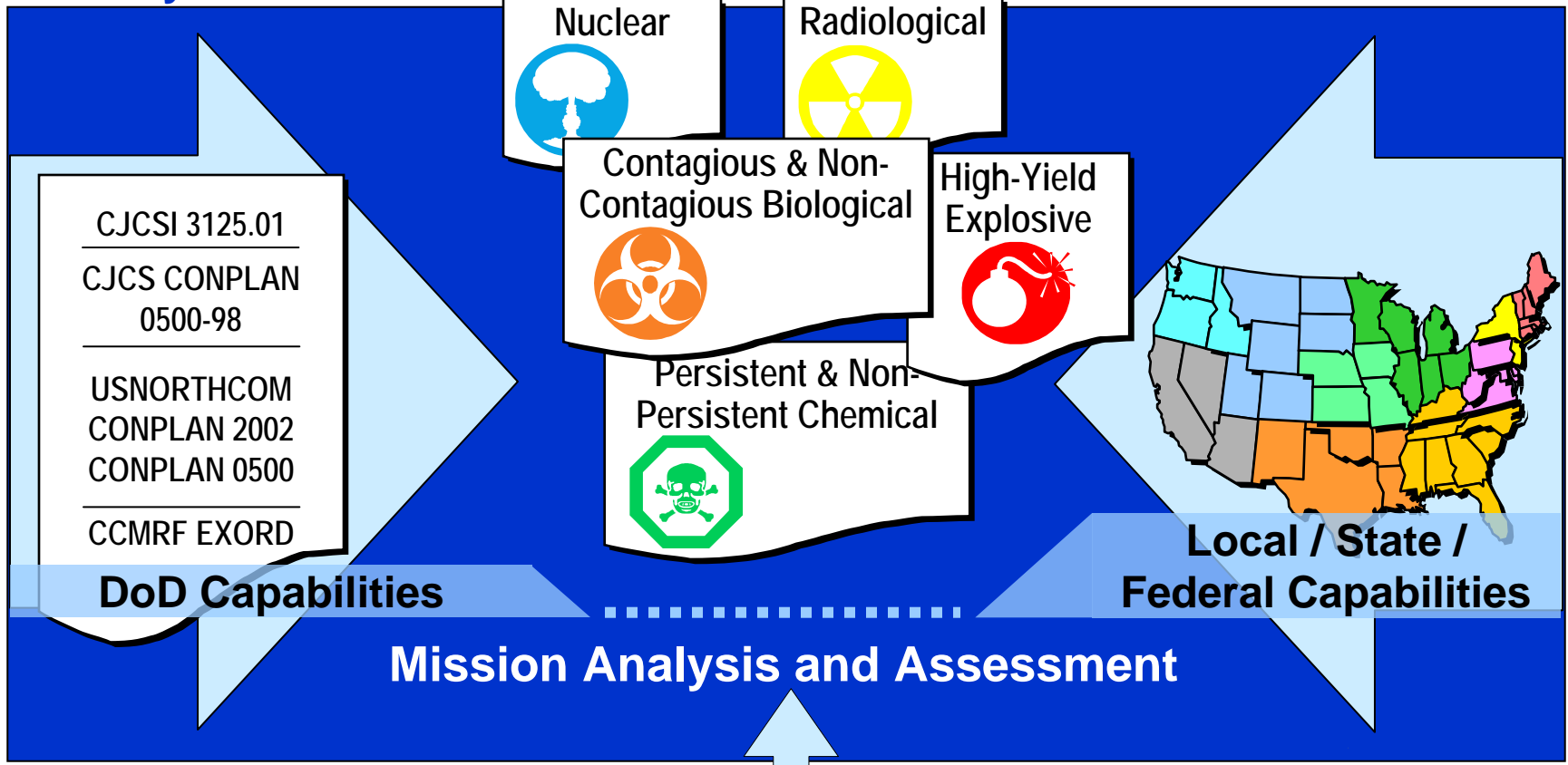


Deliberate Planning - Preparedness

**CBRNE CM Guidance,
Policy and Plans**

**Contingency Planning and
Playbooks**

**National Response Plan
Local and State
Emergency Plans**



- CJCSI 3125.01
- CJCS CONPLAN 0500-98
- USNORTHCOM CONPLAN 2002
- CONPLAN 0500
- CCMRF EXORD

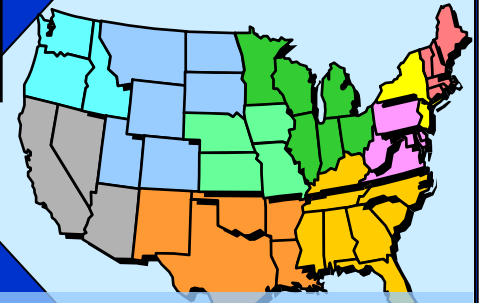
Nuclear

Radiological

Contagious & Non-Contagious Biological

High-Yield Explosive

Persistent & Non-Persistent Chemical



**Local / State /
Federal Capabilities**

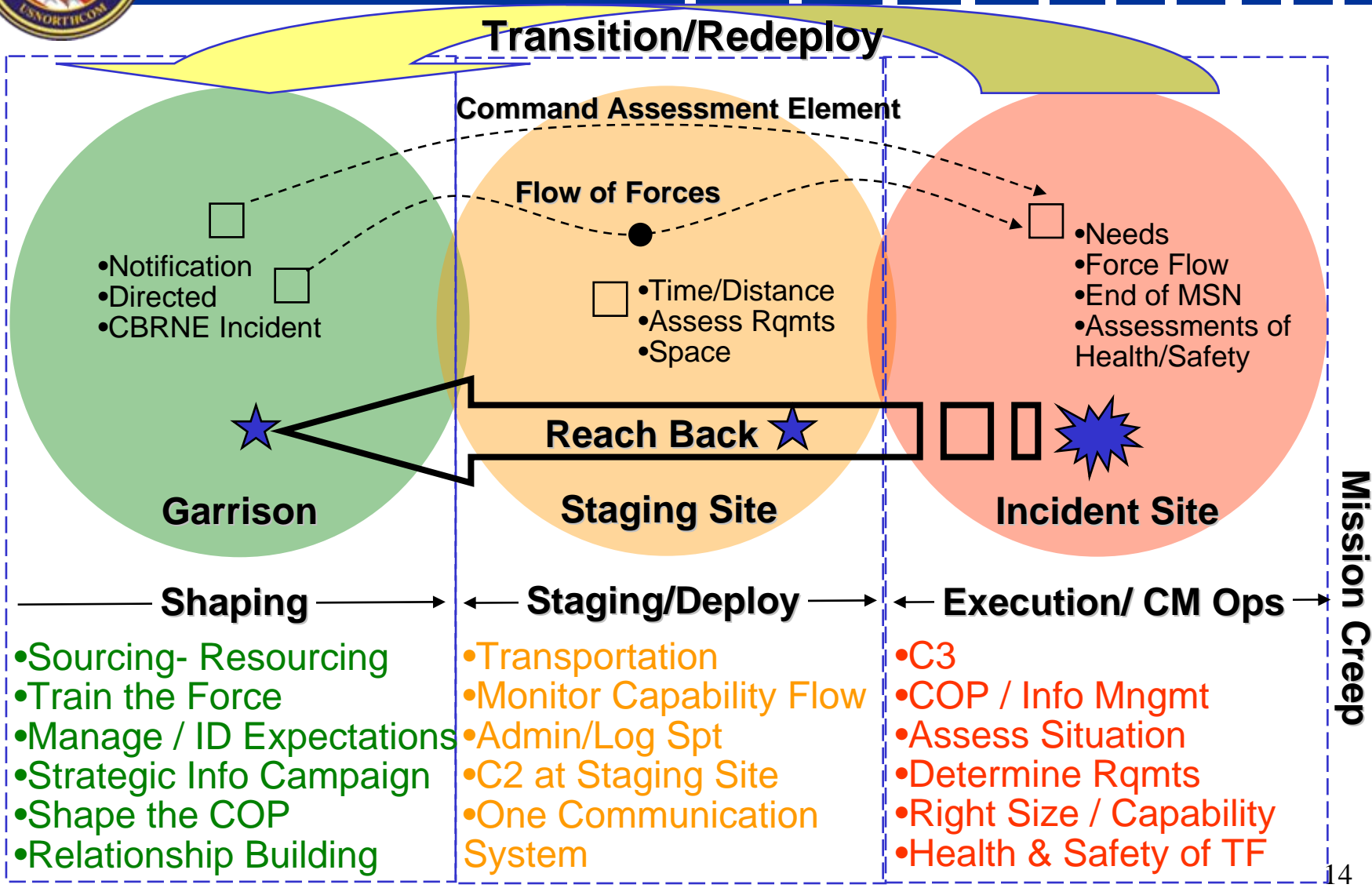
Mission Analysis and Assessment

**Area Assessment and GIS
Display and Analysis**

Emergency Plans



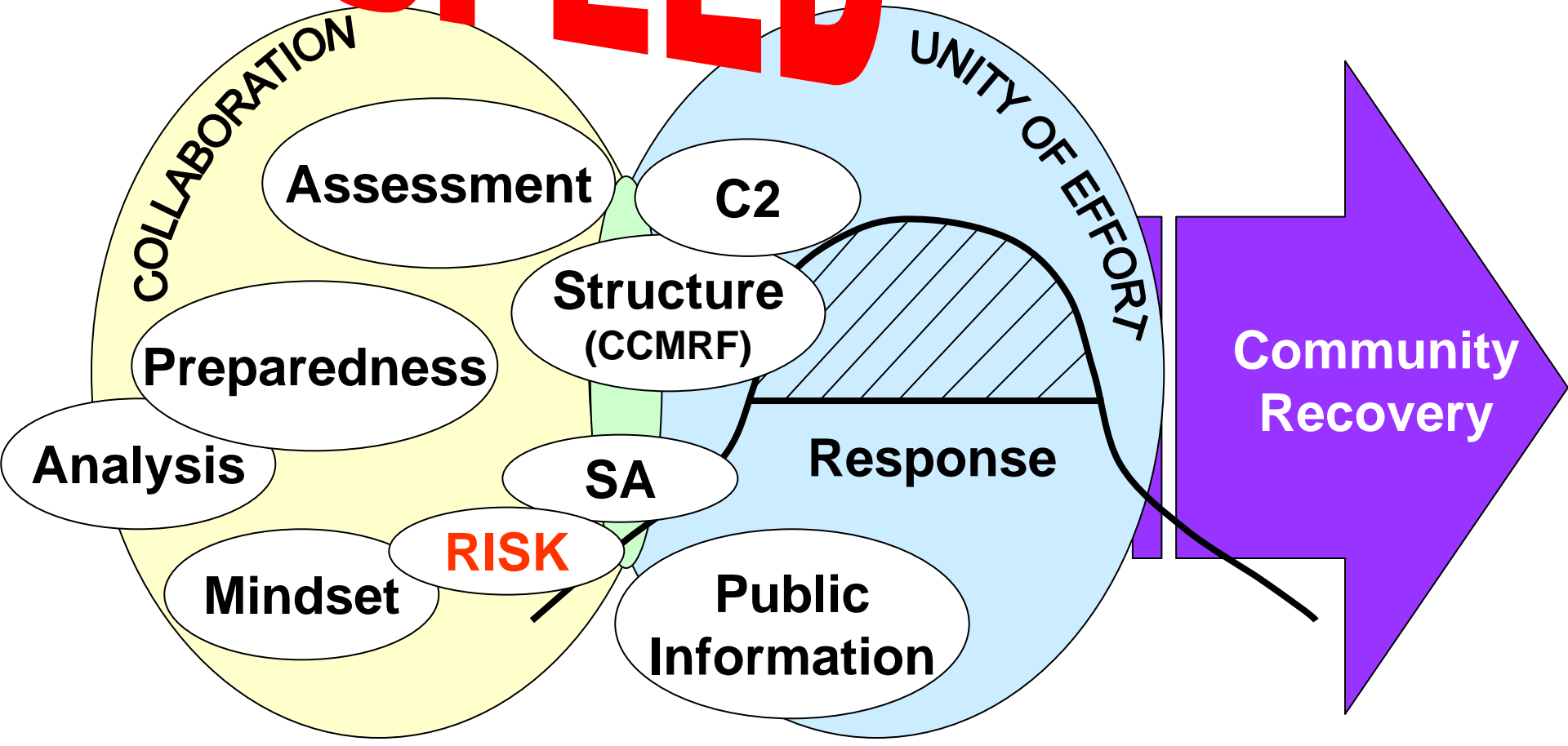
Concept of Operations





"Center of Gravity"

SPEED

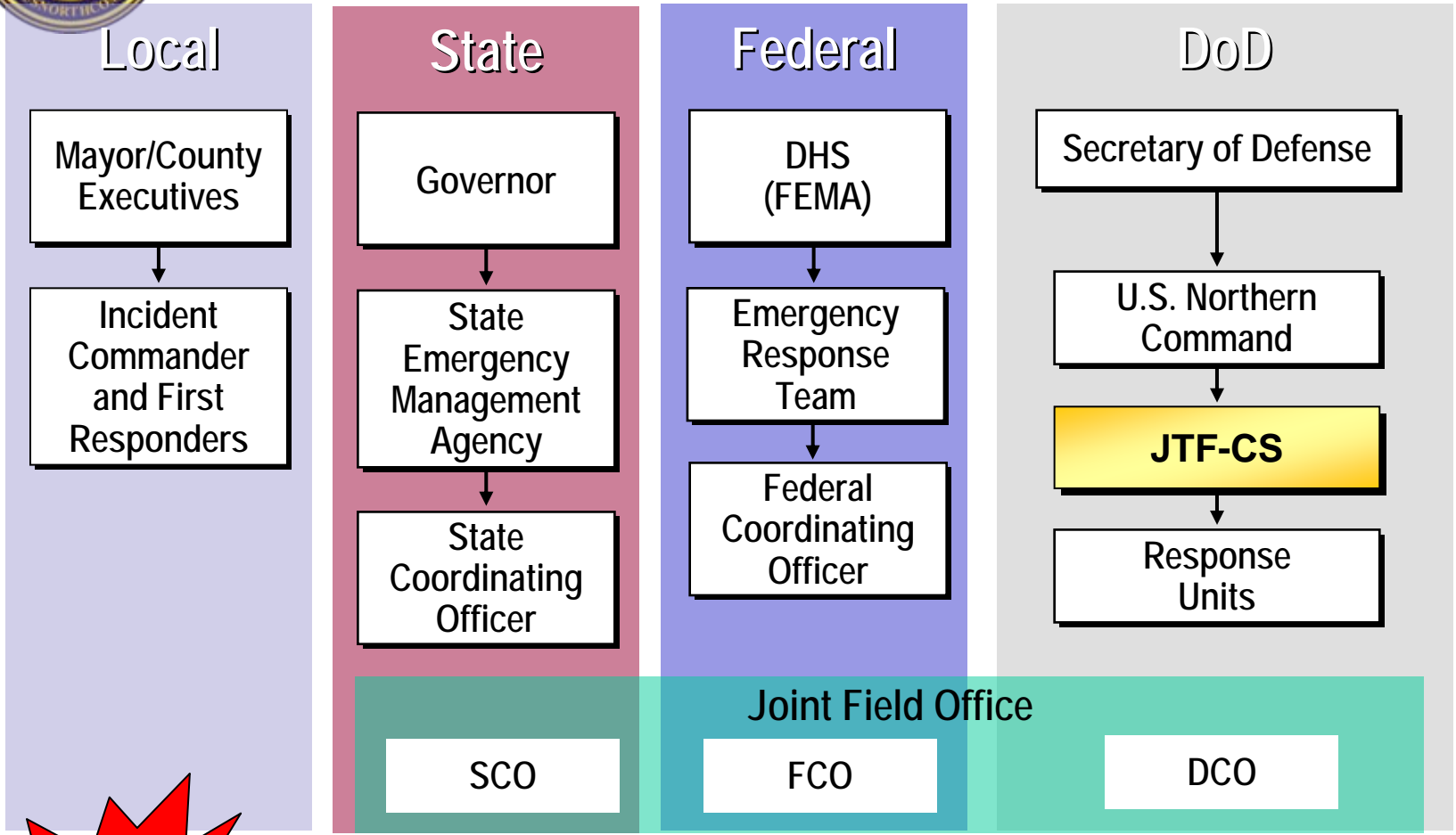


LAW / POLICY / REGULATION / PROCESS



National Incident Management

I
N
C
I
D
E
N
T



Timetable Based on Events



“...find the right way to put together **capabilities** of the **federal government** in support of the **capabilities of the state**...”

General Victor E. Renuart Jr.
Commander
NORAD & USNORTHCOM





CCMRF Capabilities

JTF-CS provides command and control, and coordination for the following types of tasks and requirements



HQ Augmentation

- Tech Aug
- Mapping
- Modeling
- Public Affairs



TF Response
Incident Site Support




- Coord w/Local EM Director
- Extraction of Injured
- **Decontamination**
- Surveying, Monitoring, and Marking of Incident Site
- Security and Protection

TF Medical
Medical Support



- Triage /Treatment
- Hospital Augmentation
- Agent Technical Support
- Veterinary Support
- Prophylaxis/Immunization
- NDMS support

TF Support
Logistics Support



- General Support Log
- JRSOI
- Displaced Populace
- Mortuary Affairs
- Transportation
- Engineering

TF Aviation
Aviation Support



- A2C2 (Rotary)
- Gen Avn Support
- Search and Rescue
- CASEVAC/MEDAVAC
- Aviation Maintenance



Chemical Biological Incident

UNCLASSIFIED

Response Force (CBIRF)

- Marine Corp reaction force of Marines and Sailors.
- Provides agent detection / identification; casualty search, technical rescue, **Hot Zone extraction and personnel decontamination**; (70-210 Per hr) and time-critical medical care and stabilization of contaminated personnel.

- Recon, **Decon**, and EOD **Teams**
- Security, Search and Rescue Teams
- Medical Treatment Teams

- Portable Gas Chromatograph / Mass Spectrometer
- M21 Bio Agent Spectrometer
- Chemical agent monitors
- Radiac set DT236/PDR75
- **Decontamination stations**
- Explosive Ordnance Robot
- Satellite communications suite



CBIRF Decon Capabilities



- Force protection decon (30-45 per hour)
- Ambulatory decon (200-225 per hour)
- Non-ambulatory decon (65-75 per hour)



Force Protection Line



Ambulatory Line



Non-Ambulatory

NBC Reconnaissance

- Conduct route, zone and area NBC Reconnaissance to determine the presence and extent of NBC contamination.
- Provide radiation monitoring and **chemical agent detection** in support of nuclear and chemical accident and incident control plan operations.



Each Squad has two NBC Reconnaissance System (FOX) M93A1 Armored vehicle mounted systems designed to detect, identify, monitor, quantify, and mark chemical and radiological contamination

Decontamination



Decontamination capability for chemical, biological, or radiological decontamination for:

- **250- 400 contaminated personnel per hour,**
- **or up to 30 vehicles per hour**



Medical Surge



Level II Care

- Initial treatment & advanced life saving for 2 groups/locations of 40 casualties per hour
 - triage of mass casualty
 - initial resuscitation/stabilization
 - advanced trauma life support
 - preparation for further evacuation of patients
- **Limited patient decon**
- Limited patient holding
- Limited pharmacy, laboratory and radiology services
- Limited ground ambulance

Level III Care

- **Collectively protected field hospital (EMEDS+25)**
- Emergency medicine
- Primary care
- Surgery
 - 2 operating rooms
 - 20 major surgeries or 20 non-operative trauma resuscitations in 72 hour period
- 3 critical care beds



Mortuary Affairs Decontamination

Mortuary Affairs Decontamination Collection Point (MADCP)

Note: Requires Request for Forces – not in CCMRF

- 34 personnel to operate
- 30 - 48 human remains can be processed during a 12-hour period



Air Search and Rescue

Aviation Search Air Rescue

- Transport capability of up to 1500 passengers or 45 short tons per day.
- Also provides aircraft and crews able to transport disaster **search and rescue operations** ISO day and night operations.





“...look for ways to continue to **partner** to make the job of the states easier when it comes time to respond within their state...”

General Victor E. Renuart Jr.
Commander
NORAD & USNORTHCOM



Take Aways



- **Swap Business Cards before the “event”**
- **Relationships**
- **JTF-CS**
 - **Today’s only standing Joint HQ dedicated to anticipating, planning, integrating, and responding to CBRNE events**
 - **24/7/365 → Rapid Response / Heightened SA**
- **JTF-CS responds to requests and directives**
- **“Not if...but when”**

Questions?

