

UNCLASSIFIED



National Security Space Office

Turning Architectures into Capabilities

National Security Space Policy and Architecture
Symposium

Maj Gen James B. Armor, Jr
1 February 2007

UNCLASSIFIED

DILBERT

BY SCOTT ADAMS





National Security Space Office (NSSO) Background

- NSSO primary roles:
 - Staff Support to DoD Executive Agent for Space
 - NSS Architect (NSSA)
- NSSA established by 1998 MOU for NSS Management between SecDef (Cohen) and DCI (Tenet)
 - “Ensure activities are closely coordinated and architectures are integrated to maximum...”
- Support Decision-making



Architectures: What they are and aren't

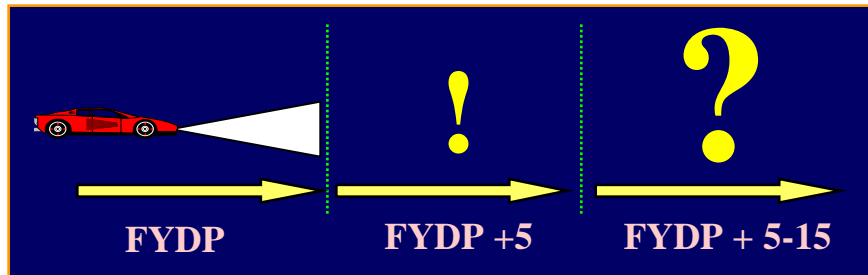


- **Provide framework and context**

- Much like city planning
- Versus designing a specific building

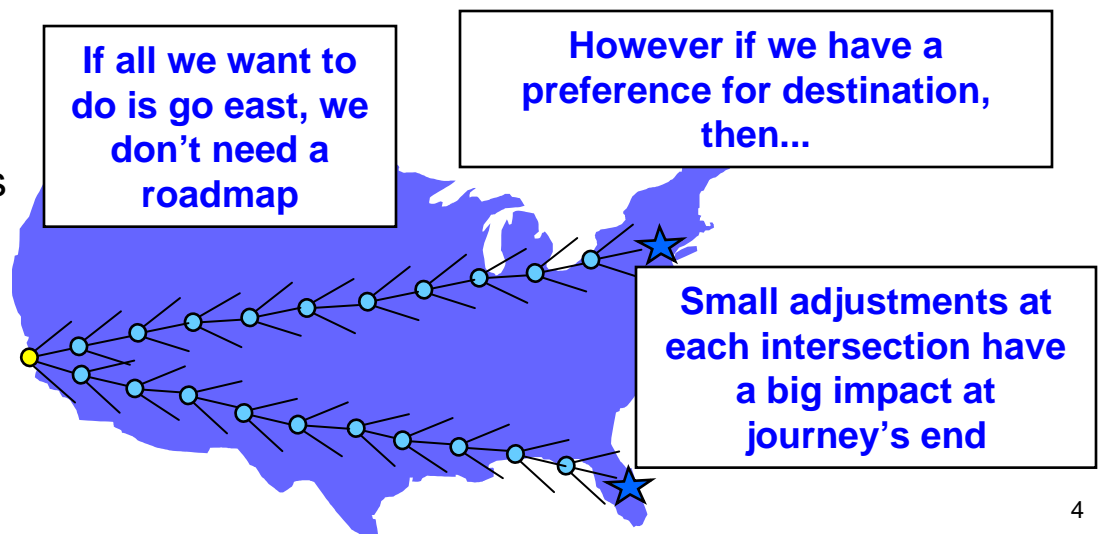
- **Recommendations that guide long term actions**

- Focus on ultimate destination
- Versus the next exit & meal stops or what's within range of the headlights



- **Characteristics or objectives that influence decisions**

- Allows flexibility in moving towards objective
- Versus specific system implementations



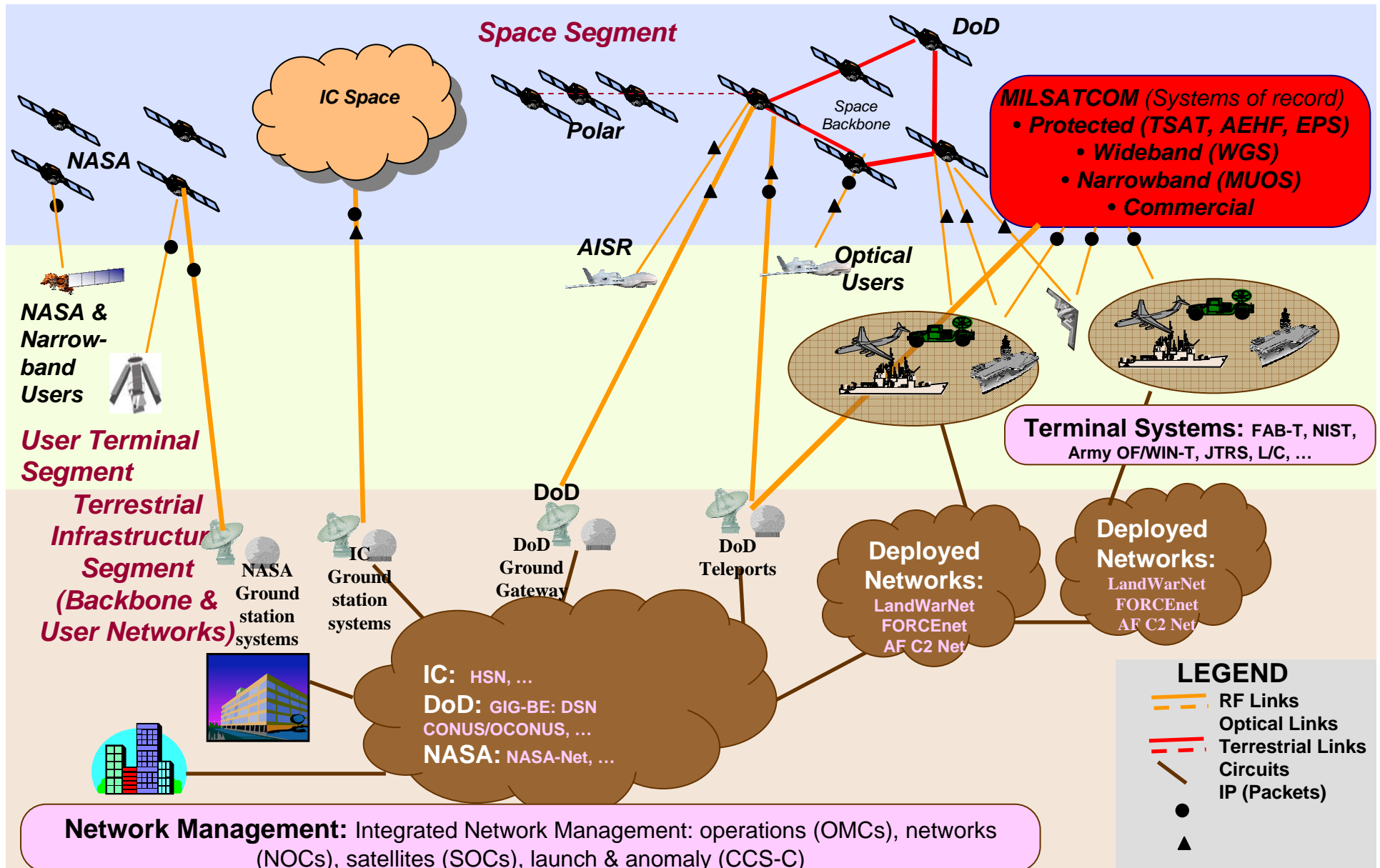


Architectures: What makes them successful

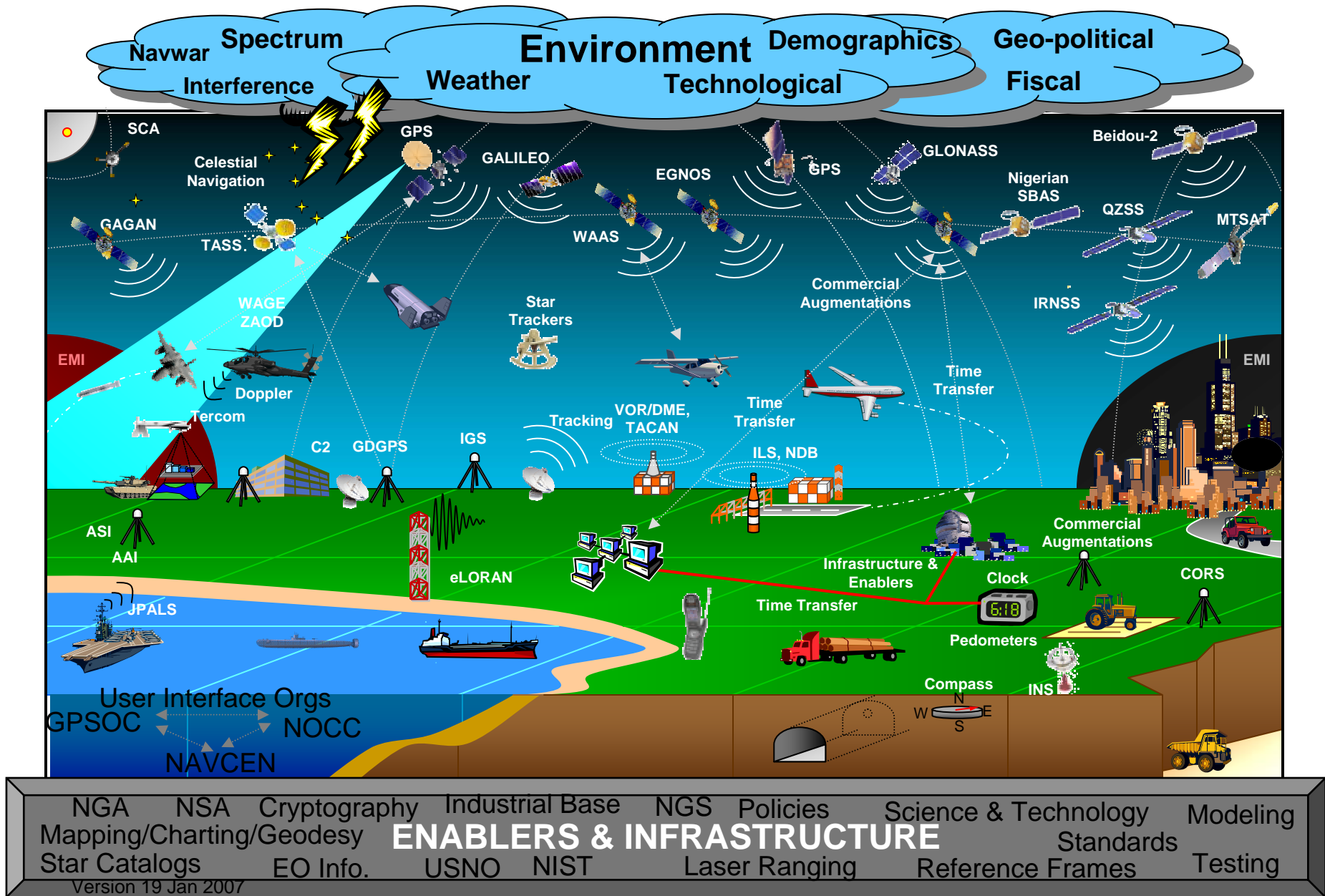
- Context
 - End to end mission, all platforms
 - Interfaces with other missions and mediums
- Dynamic
 - Continuous assessment to address “facts of life”
- “Enforceable”
 - Enough detail to support implementable decisions
- Transparent
 - Impartial build of “should be” architecture
- Senior leadership participation
 - Agreed evaluation criteria
 - Organizational data sharing

SATCOM Architecture

TCA Version 2.0



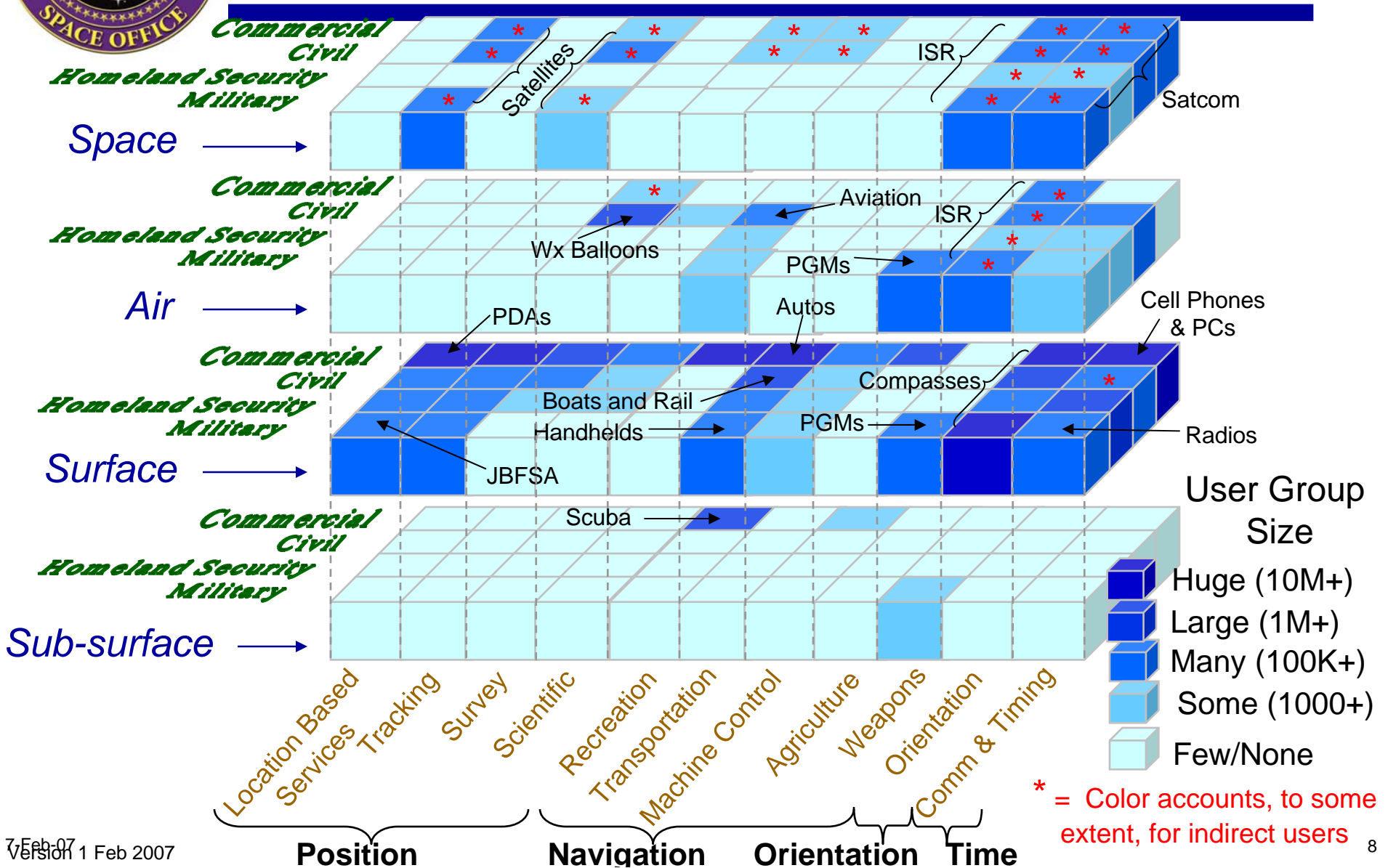
Position, Navigation, and Timing (PNT) Evolved Baseline (2025) - Operational View





UNCLASSIFIED

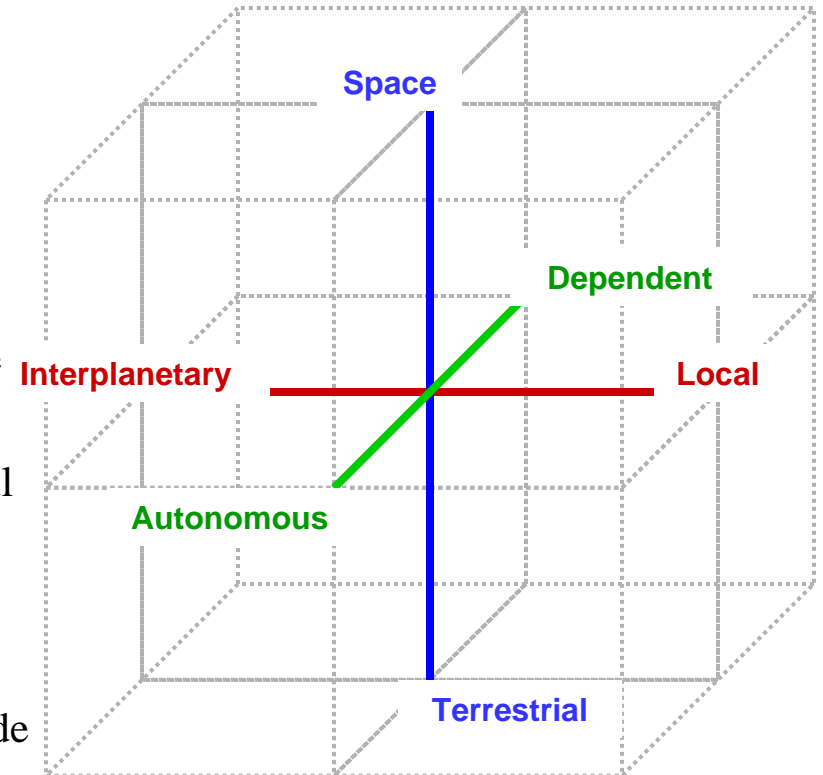
PNT User Perspectives (2025)





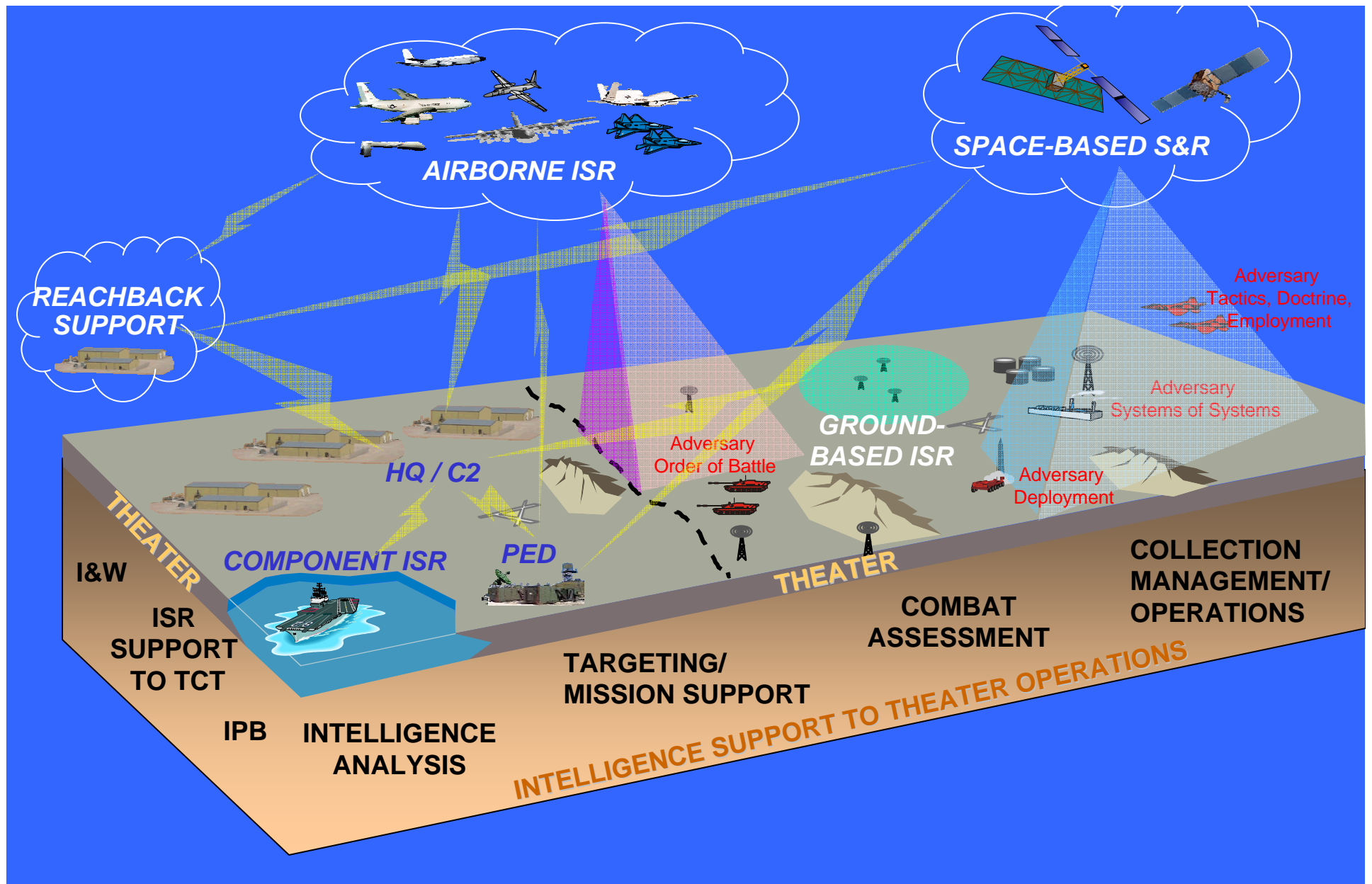
PNT Architecture Trade Axes

- **Source Location** (of the service provider)
 - Terrestrial: concept provides service from, near, or beneath the surface of the earth
 - Space: concept provides service from space
- **Service Volume** (of the service provided)
 - Local: concept provides a meaningful service only at a fixed point
 - Interplanetary: concept provides a meaningful service throughout the solar system
- **Autonomy** (of the user)
 - Dependent: concept requires frequent refresh of information from external sources to provide a meaningful service
 - Autonomous: concept, once initialized, is self-contained; requires no refresh of info from external sources to provide meaningful service

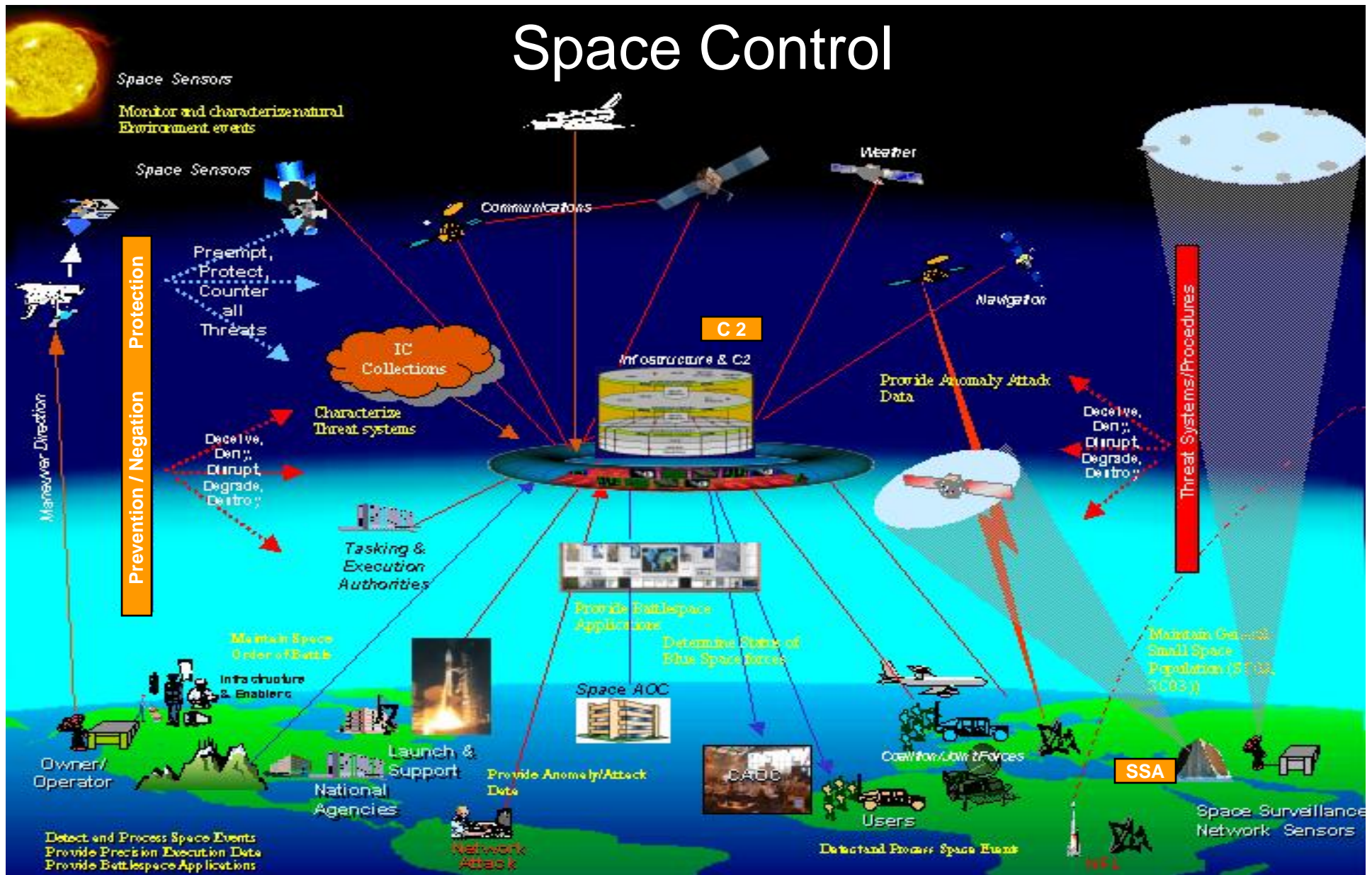


TRADE AXES ENSURE CONSIDERATION OF A FULL RANGE OF ARCHITECTURAL OPTIONS

Intelligence, Surveillance, and Reconnaissance (ISR) Architecture



Space Control



Assuring access to Space for US & Allied Forces
Denying access to our Adversaries



UNCLASSIFIED

Summary

- Vision and planning across the community is needed to maintain US preeminence
- Build the bridge from both sides



It's time to stop acting "systems" and start acting architectures

