

The Army and Space...

An Essential Relationship!

COL(P) Roger F. Mathews

**Deputy Commander for Operations
U.S. Army**

**Space and Missile Defense Command /
U.S. Army Forces Strategic Command**



Your Army – Serving The Nation...

From Combat Operations...



- **236,000-plus Soldiers** deployed overseas in 80 countries
- **Composed of adaptive & innovative Soldiers**
- **Led by experienced leaders**
- **Enabled by advanced technologies**



... to Disaster Relief and Humanitarian Assistance Operations

Smart, well-trained Soldiers are the key to success

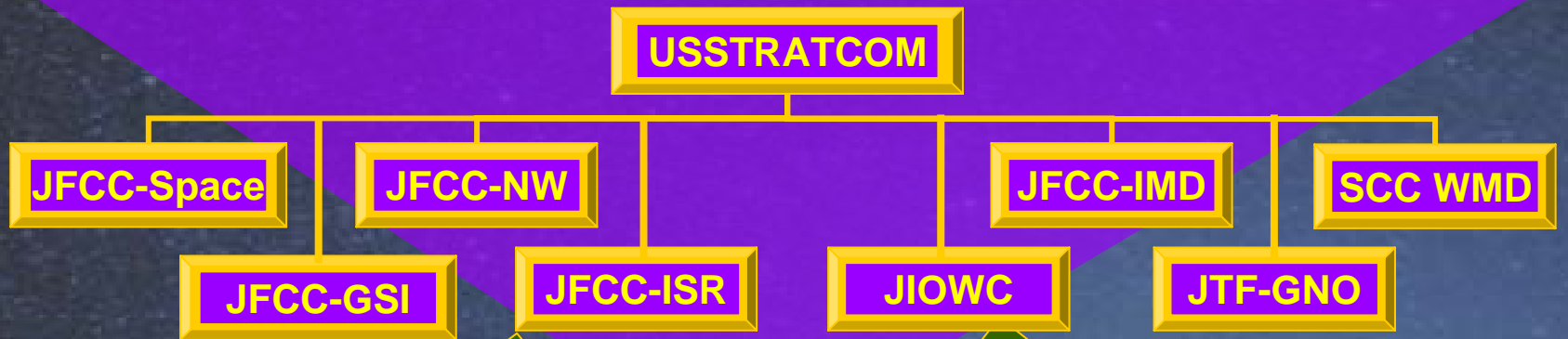
US Strategic Command

Provide the nation with **global deterrence capabilities** and **synchronized DoD effects** to combat adversary weapons of mass destruction worldwide. Enable decisive global kinetic and non-kinetic combat effects through the application and advocacy of integrated ISR, space and global operations, information operations, integrated missile defense and robust command and control.

Mission Areas



USASMDC/ARSTRAT Army Service Component Command Functions



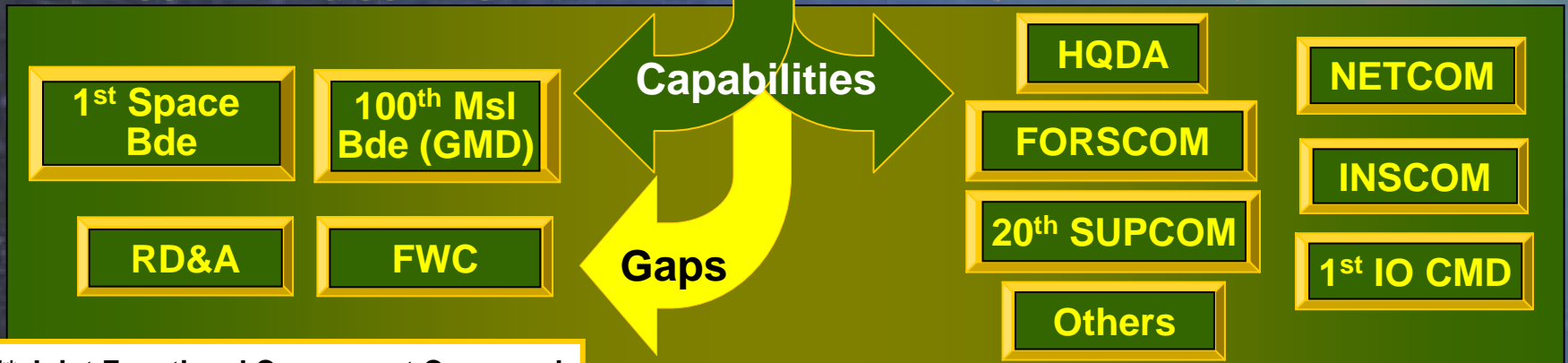
- Plans for and provides organic SMDC/ARSTRAT capabilities to JFCCs**
- Supports organic forces on joint missions to USSTRATCOM

**SMDC
ARSTRAT**

- Plans for and provides other Army capabilities to JFCCs**
- Supports Army forces on missions to USSTRATCOM

COMMAND & CONTROL

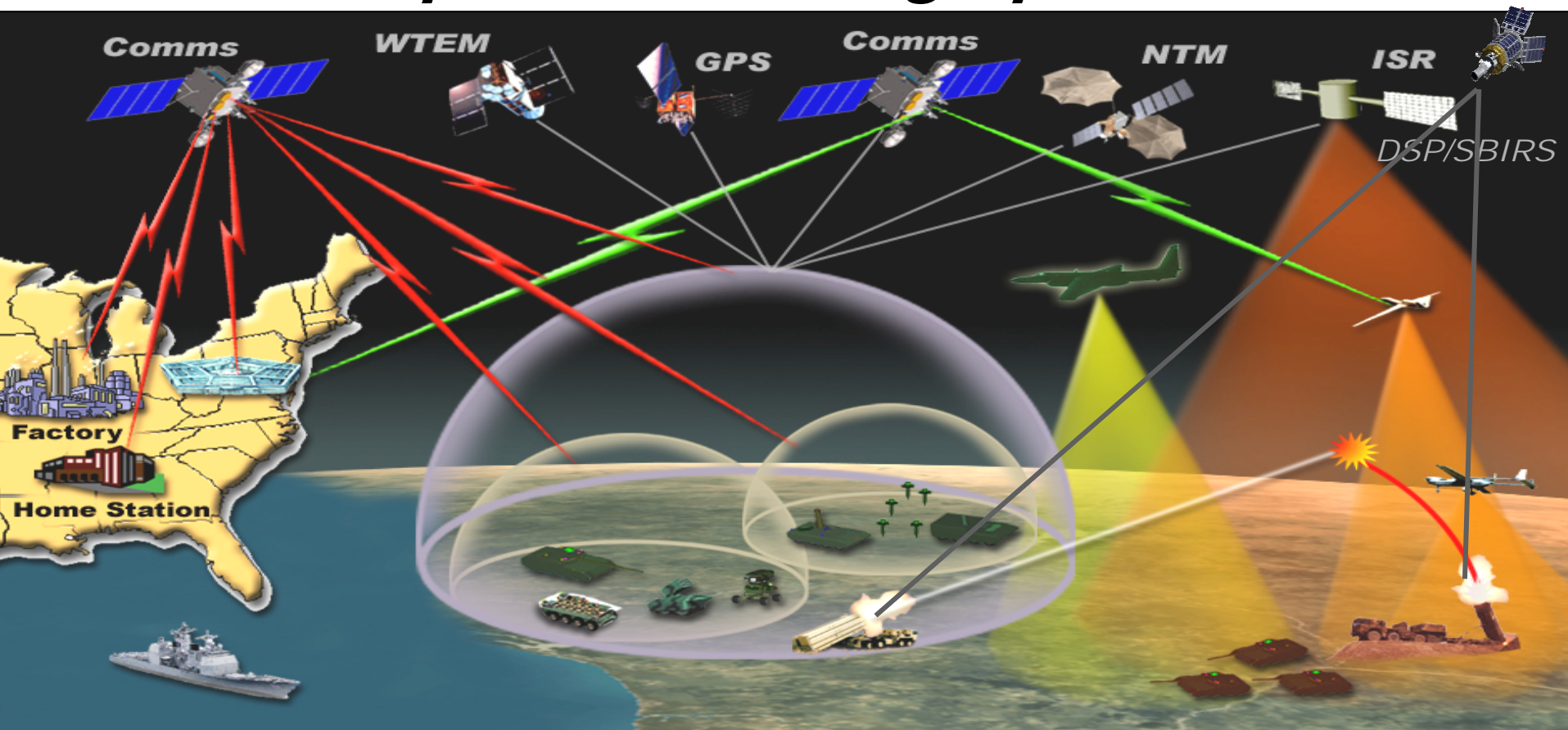
PLAN, COORDINATE, & INTEGRATE



** Joint Functional Component Command



Operationalizing Space



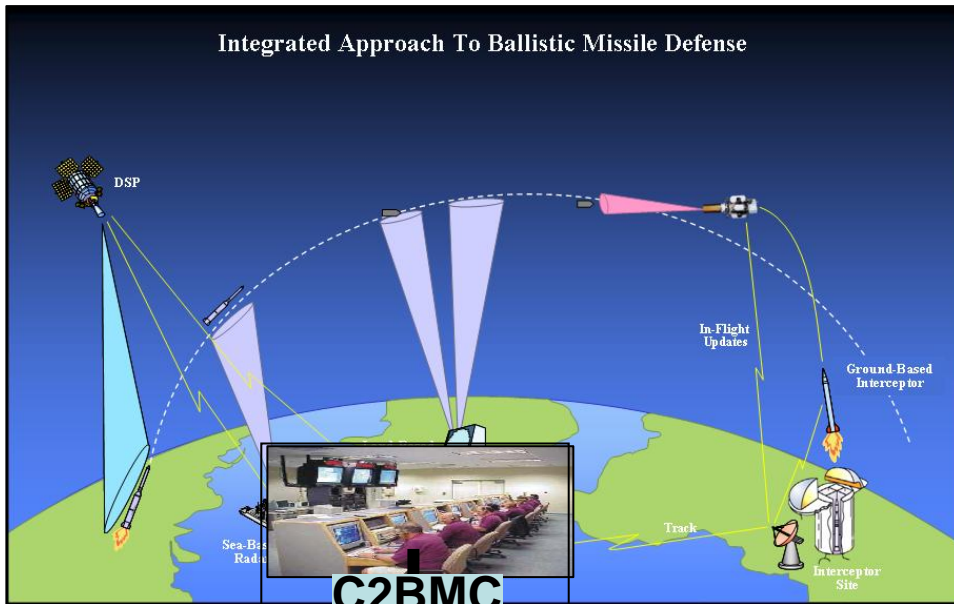
- **Enable, extend, protect the network (Joint C2/NECC)**
- **Provide responsive space sensors for battlespace awareness**
- **Enable engagements out of contact; incorporate non-kinetic effects**
- **Improve logistics capabilities**



Integration -

Net-Enabled Command Capability (NECC)

Integrated Approach To Ballistic Missile Defense



C2BMC

**C2BMC
NECC
Services**

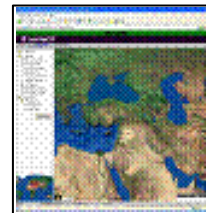
- Situational Awareness
- Planning

**Ballistic Missile
Defense picture**

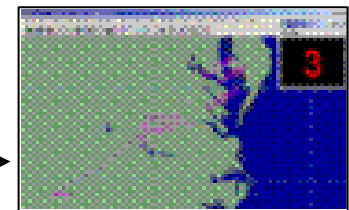
- Threat/
interceptor tracks
- Engagement
information

New test moves Integrated Missile Defense Command & Control Battle Management & Communication (C2BMC) toward net-centric operations

Pushes situational awareness & planning to DoD C2 users



DoD users of C2BMC information



SIPRNET

**Net-enabling services:
Registry, Security,
Common Data Source Adaptor**

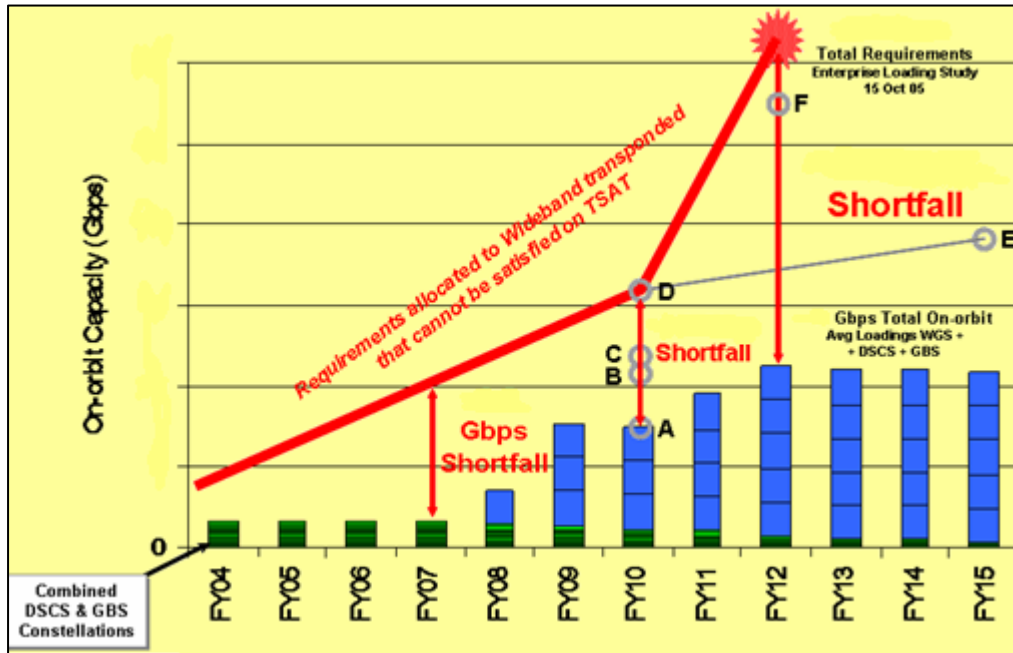


Army Forces Strategic Command

Capabilities Gap

JFCC IMD

Projected Wideband Shortfall Over Time



Warfighter Impact

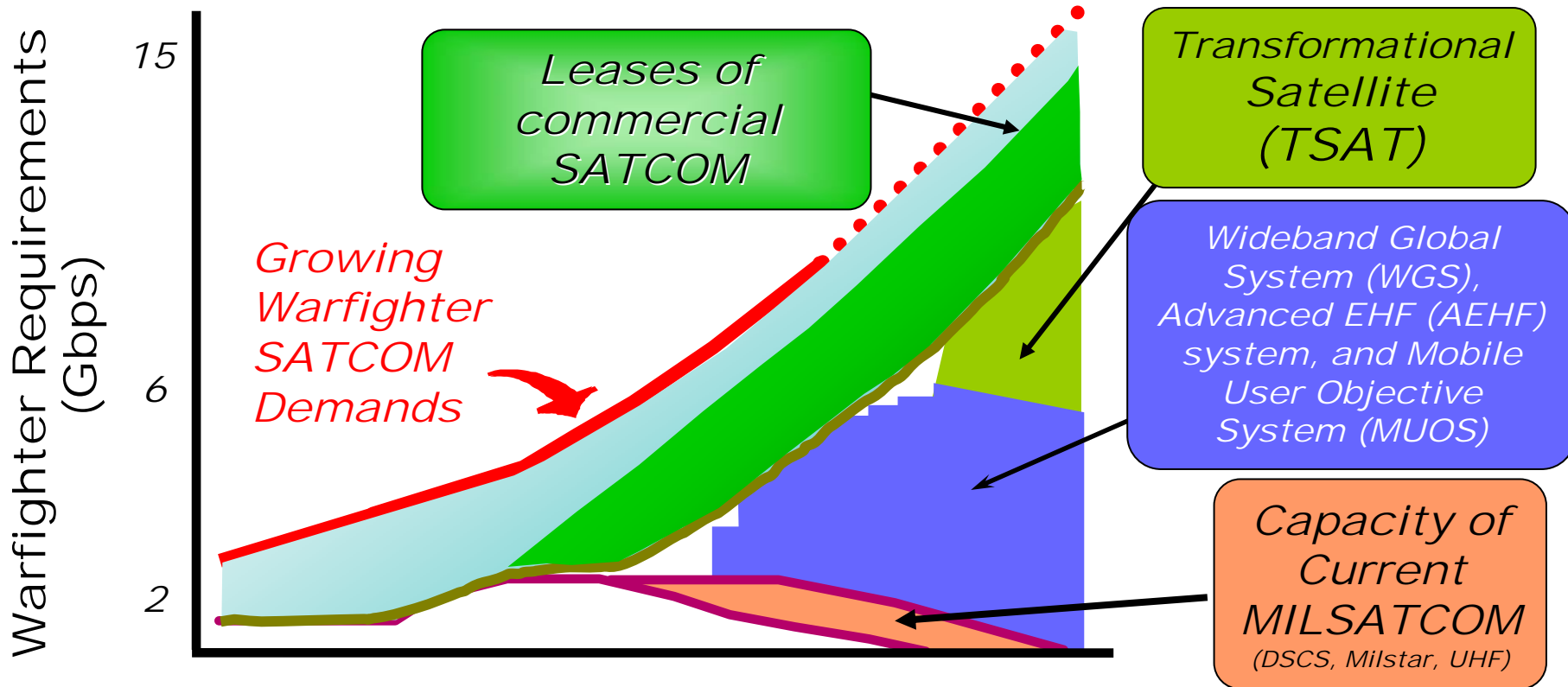
- Capacity shortfalls will continue
- Size of identified gaps grow as
 - Schedules for next generation systems are stretched
 - Performance of next generation systems is reduced

- Gaps increase risk to future operations for USPACOM
 - Available Military and Commercial SATCOM is limited
 - OPLAN requirements are stressing
- Increased risk to the Global War On Terrorism
 - Available commercial SATCOM capacity is heavily committed to CENTCOM
 - SATCOM needed to support a second major operation may exceed combined remaining military & commercial capacity
- Increased cost for operations
 - More leases for Commercial SATCOM to fill gaps left by military systems

Keep SATCOM Programs On-Schedule and On-Performance

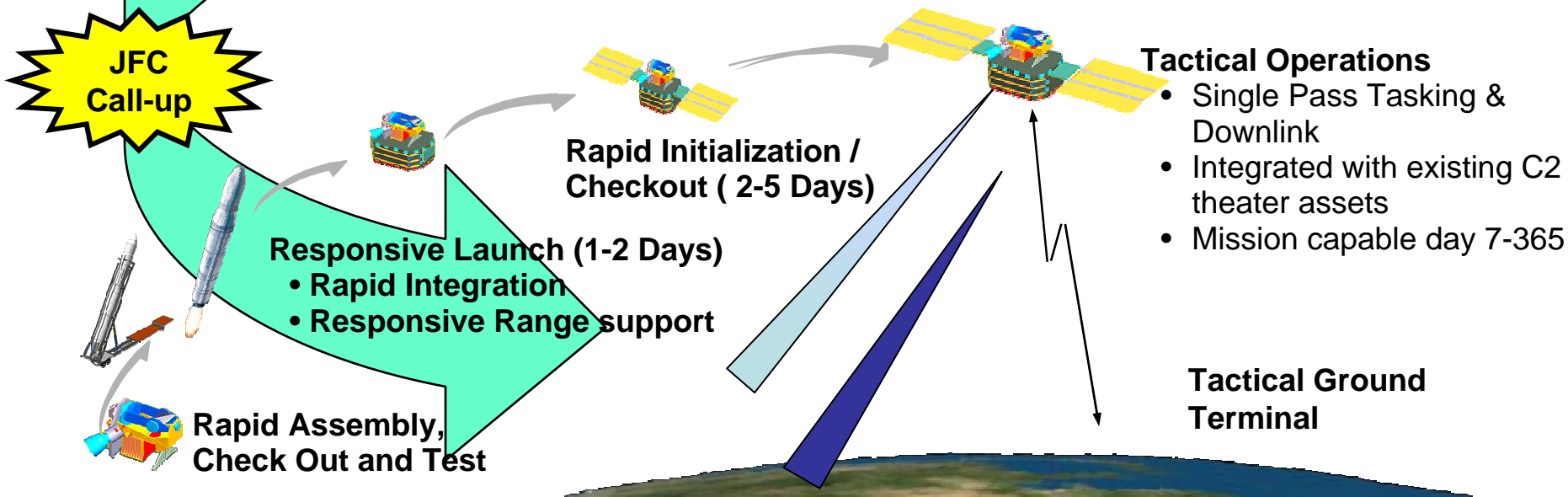
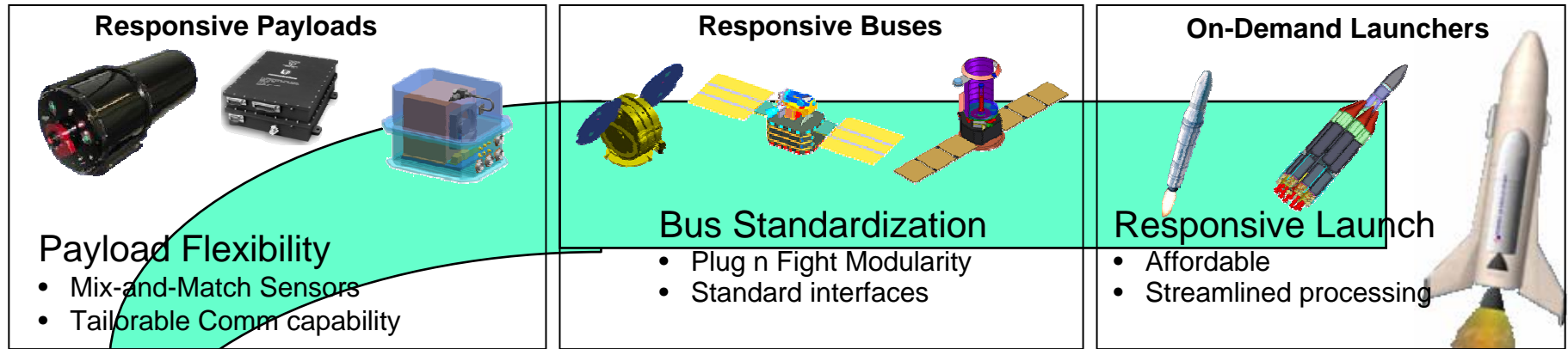


SATCOM Requirements



Increasing requirements exceed capacity of DoD owned & operated MILSATCOM systems

Operationally Responsive Space Concept



Operationally Responsive Space is Affordable, Organic & Responsive!



Working Together – Jointly!

- The warfighter needs to be involved from the beginning...and kept engaged through each step in the process.
- Government does not have all the answers...industry is vital to the solution.
- Capabilities must catch up with requirements.



The Warfighter is the centerpiece of all we do!