



Concept Briefing

USAR CBRNE Incident Response Force (CIRF)

14 JANUARY 2008

415th CM BDE

Requirement

- Provide a CBIRF type capability similar to the Joint Task Force – Civil Support (JTF-CS) existing Marine Corps unit.
- Provide an initial response team and the follow-on CIRF.
- Describe the capabilities, staffing and equipment associated with each element.

Marine Corps CBIRF Mission & Tasks

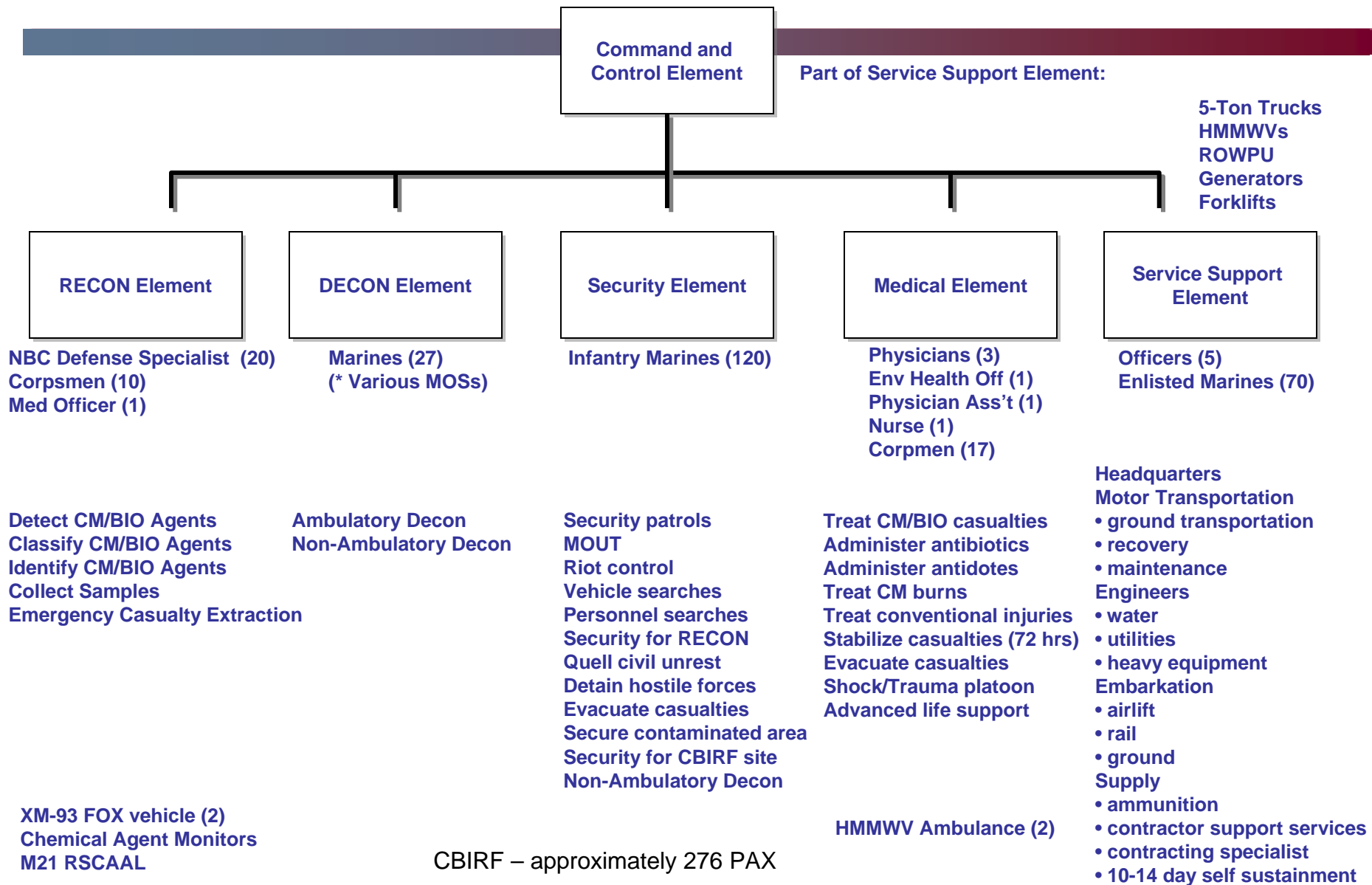
CBIRF Mission

When directed, forward-deploy and/or respond to a credible threat of a chemical, biological, radiological, nuclear, or high yield explosive (CBRNE) incident in order to assist local, state, or federal agencies and designated Combatant Commanders in the conduct of consequence management operations.

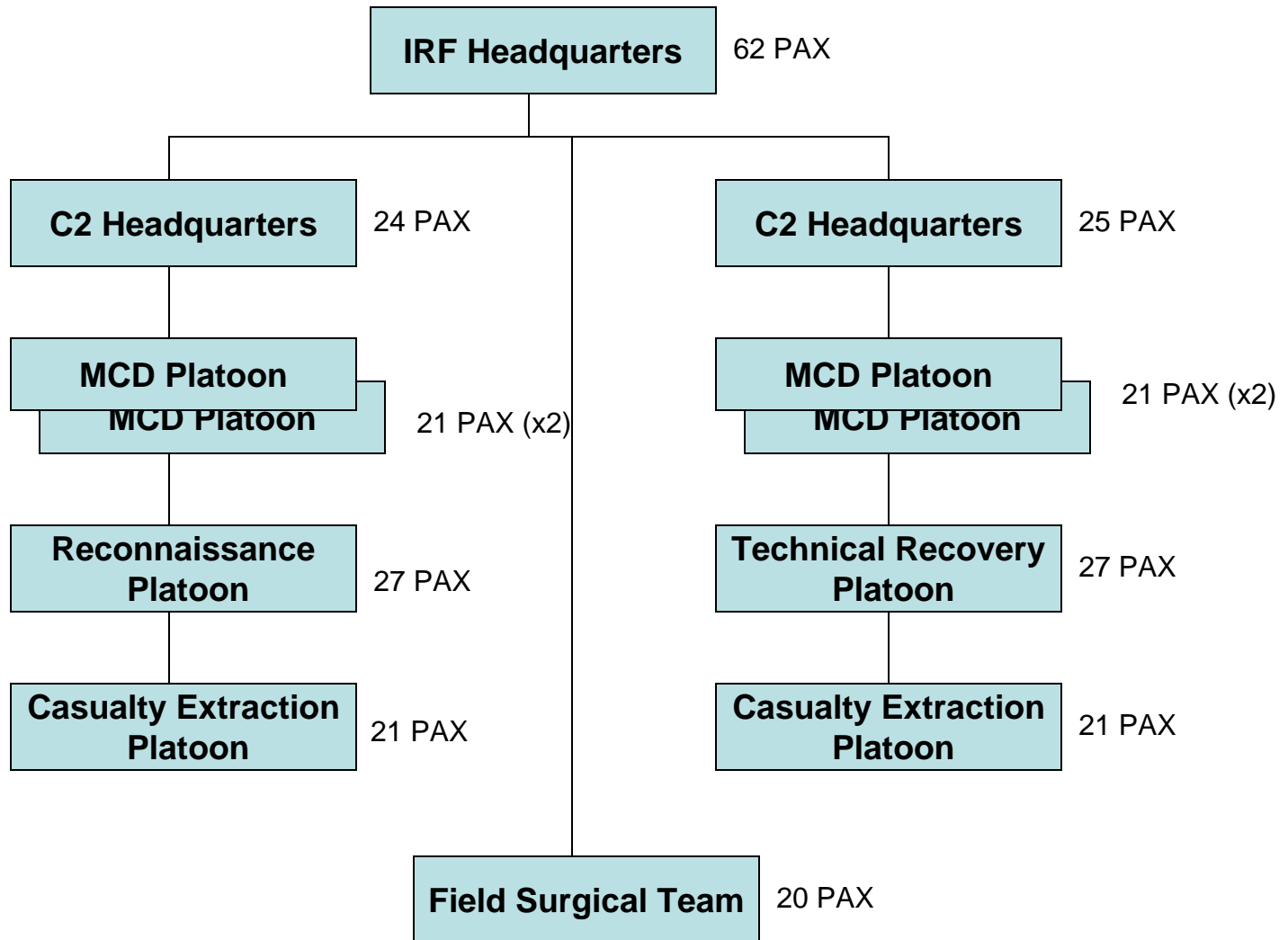
CBIRF Tasks

- Conduct Agent Detection and Identification Operations
- Conduct Casualty Search and Extraction Operations
- Conduct Personnel Decontamination Operations
- Provide Emergency Medical Care and Stabilization
- Provide Force Protection in CBRNE Environment
- Task Organize in Support of National Events
- Coordinate with Local, State & Federal Agencies
- Develop Concepts, Organization, TTP's, and Equipment

US MARINES CBIRF Organization



CIRF Task Organization



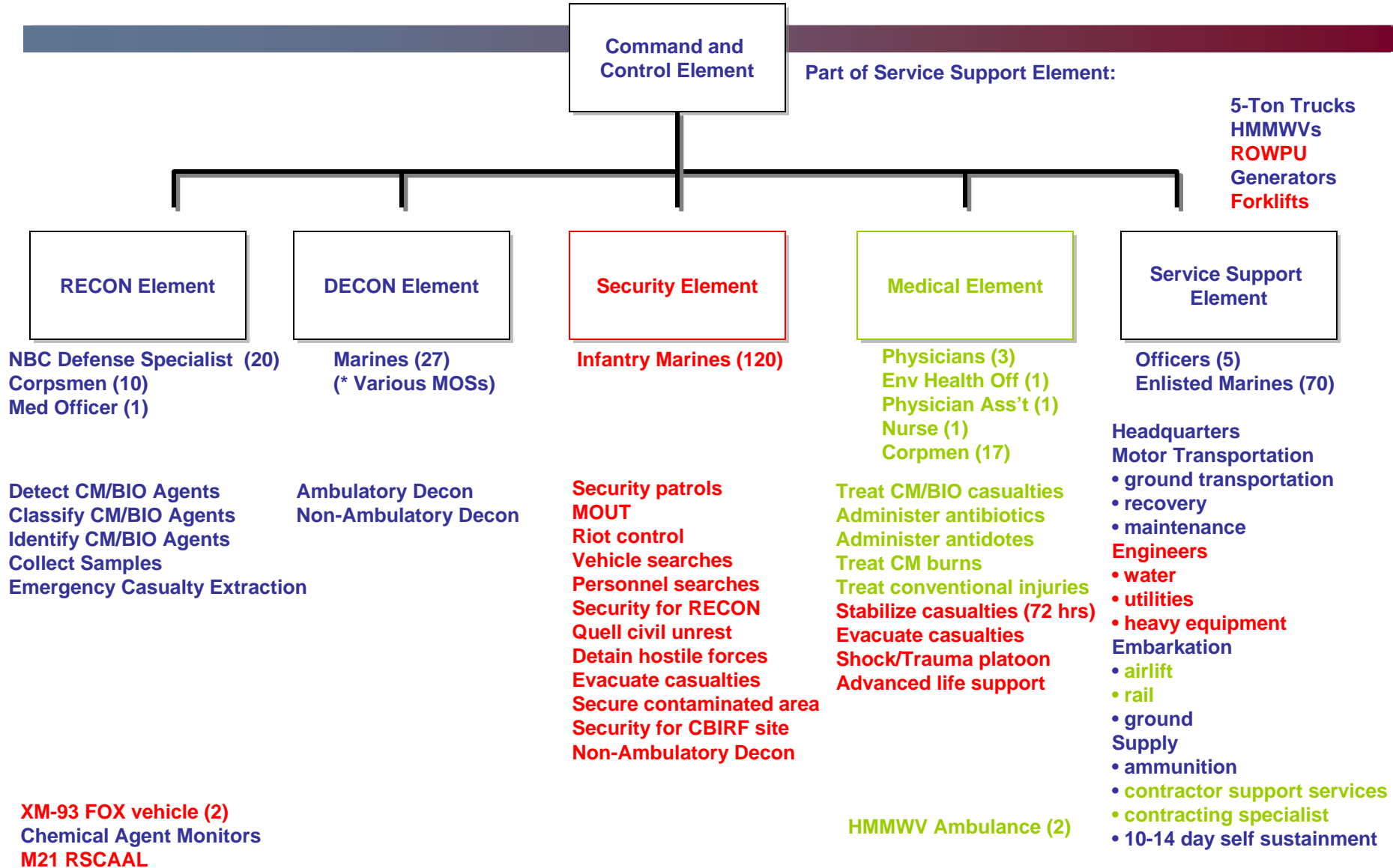
CIRF – 311 PAX

CBIRF – CIRF Comparison

Both CBIRF and CIRF capability

CBIRF only capability

CBIRF capability, CIRF could provide



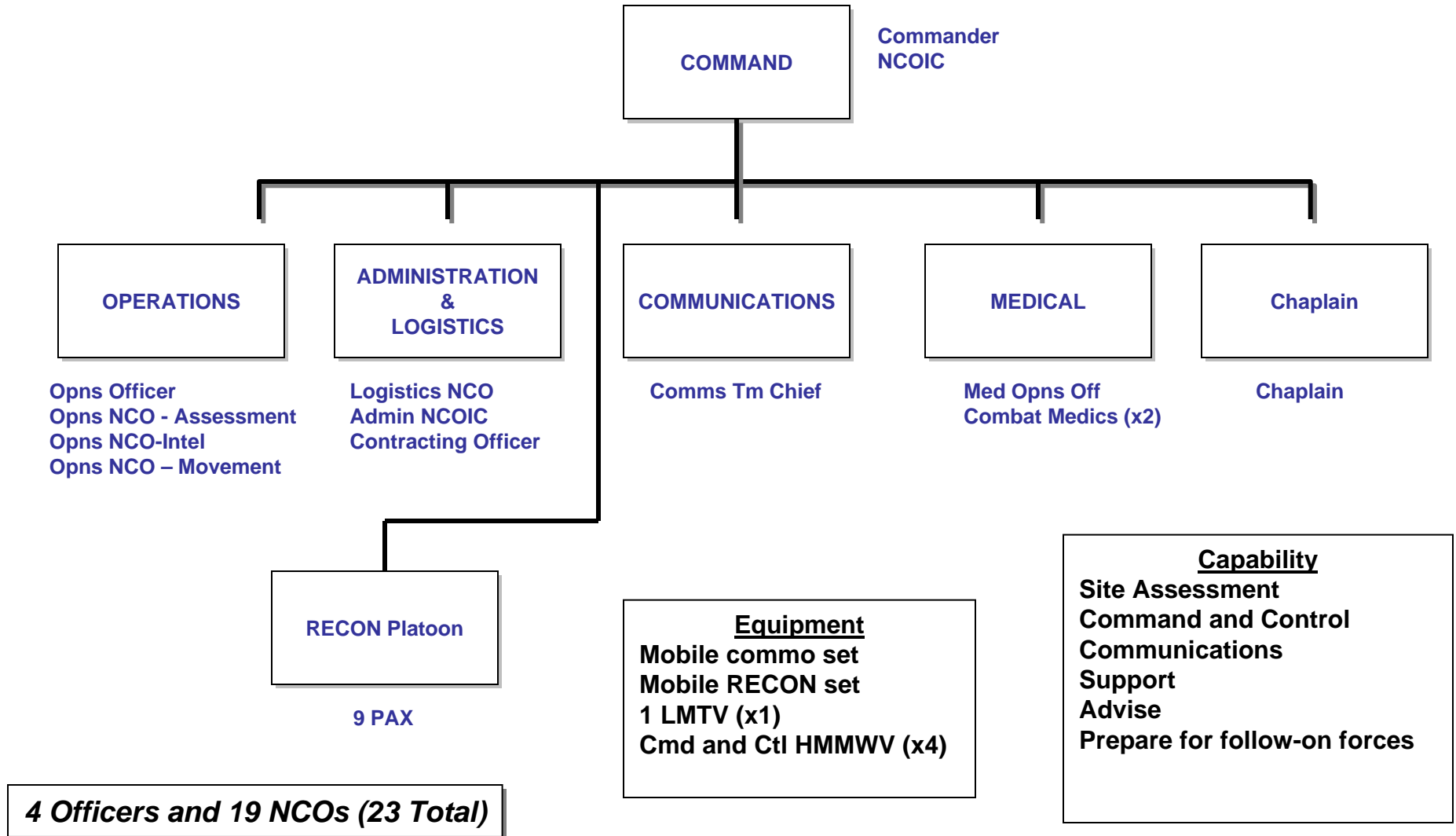
Key Take Aways

- CIRF cannot perform Security missions
- CBIRF Casualty Extraction and DECON platoons are not MOS specific
- Field Surgical Team is capable of performing some of the same tasks as CBIRF medical section
- CBIRF is self-sustaining for 10 days
- CIRF has limited Service Support Capability compared to CBIRF
- CIRF provides 4x the DECON capability as CBIRF
- CIRF provides 2x the casualty extraction capability as CBIRF
- CIRF provides additional Technical Recovery capability

Fly-Away Comparisons

USMC CBIRF	12 PAX	Assessment Team
20 th Support Command CBRNE	15 PAX	Commo. C2 and reach-back capability
NG CST	22 PAX	Commo, C2, support, advise, site assessment.
CIRF (light)	23 PAX	site assessment team, C2, commo, C2 and reach-back capability
CIRF (heavy)	64 PAX	C2, commo, RECON, MCD and casualty extraction

CBRNE Initial Response Team (Light)



CIRT (L) Capability

- Provide Command and Control
- Establish communications
- Support civil authorities at incident scene
- Assess current and projected consequences
- Advise on response measures
- Chemical, biological and/or radiological assessment of incident scene (identify, classify and sample)

CIRT (L) Communications Package



PSC-5 (1)
for secure radio to
NORTHCOM and JTF via
military satellite



INMARSAT M4 (1)
for voice or data via commercial
satellite or ISDN line



Iridium Phone (2)
for mobile, secure calls via
satellite



Mobile VTC (1)
for voice, data, or VTC
via commercial satellite



STE (2)
for secure voice or
data via landline



**Mobile Phones
from unit CTA
(2)**



**Secure (2+) and
Nonsecure Laptops
from unit CTA**

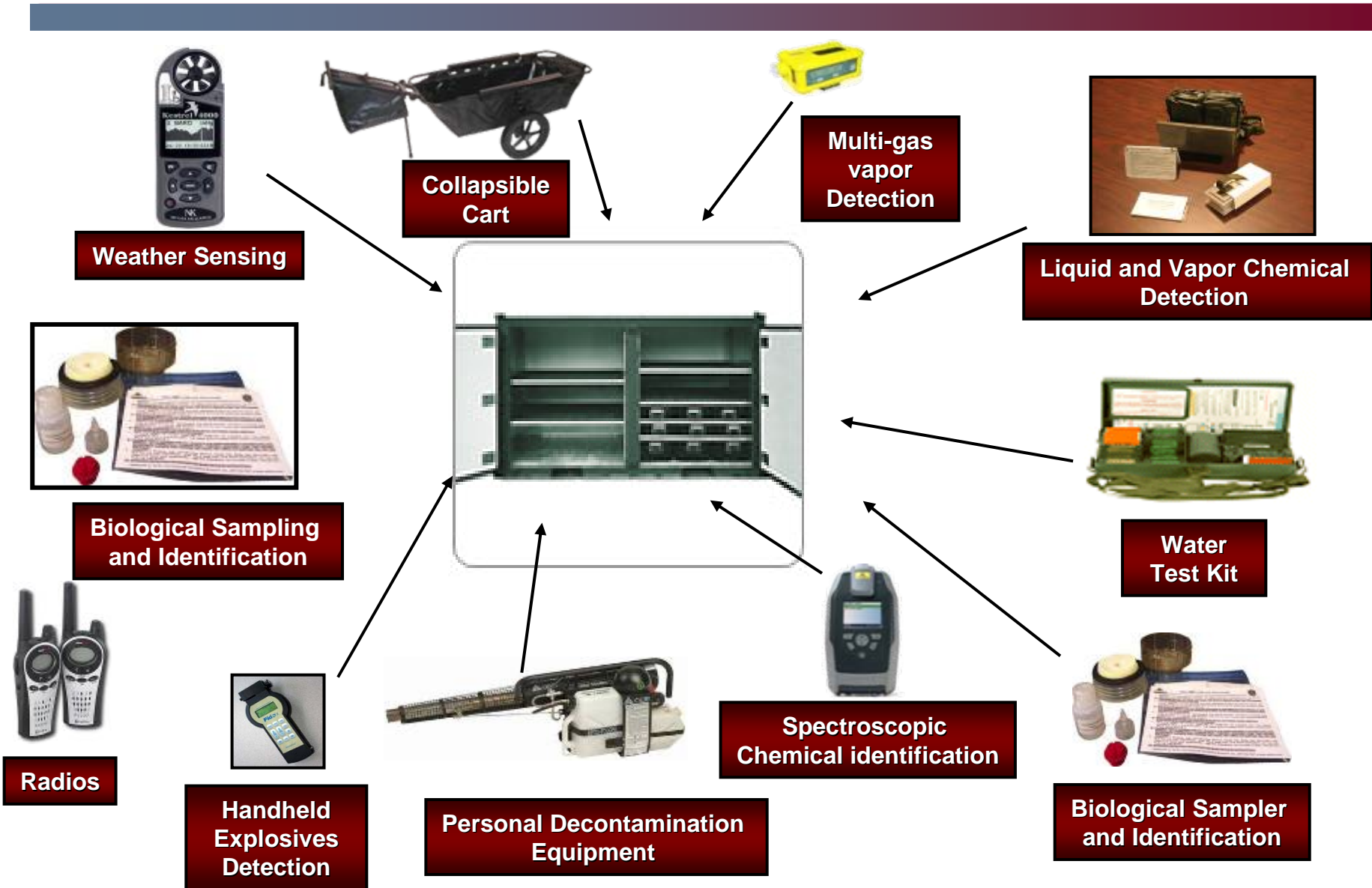


**Secure Phone
Sectera (4)**

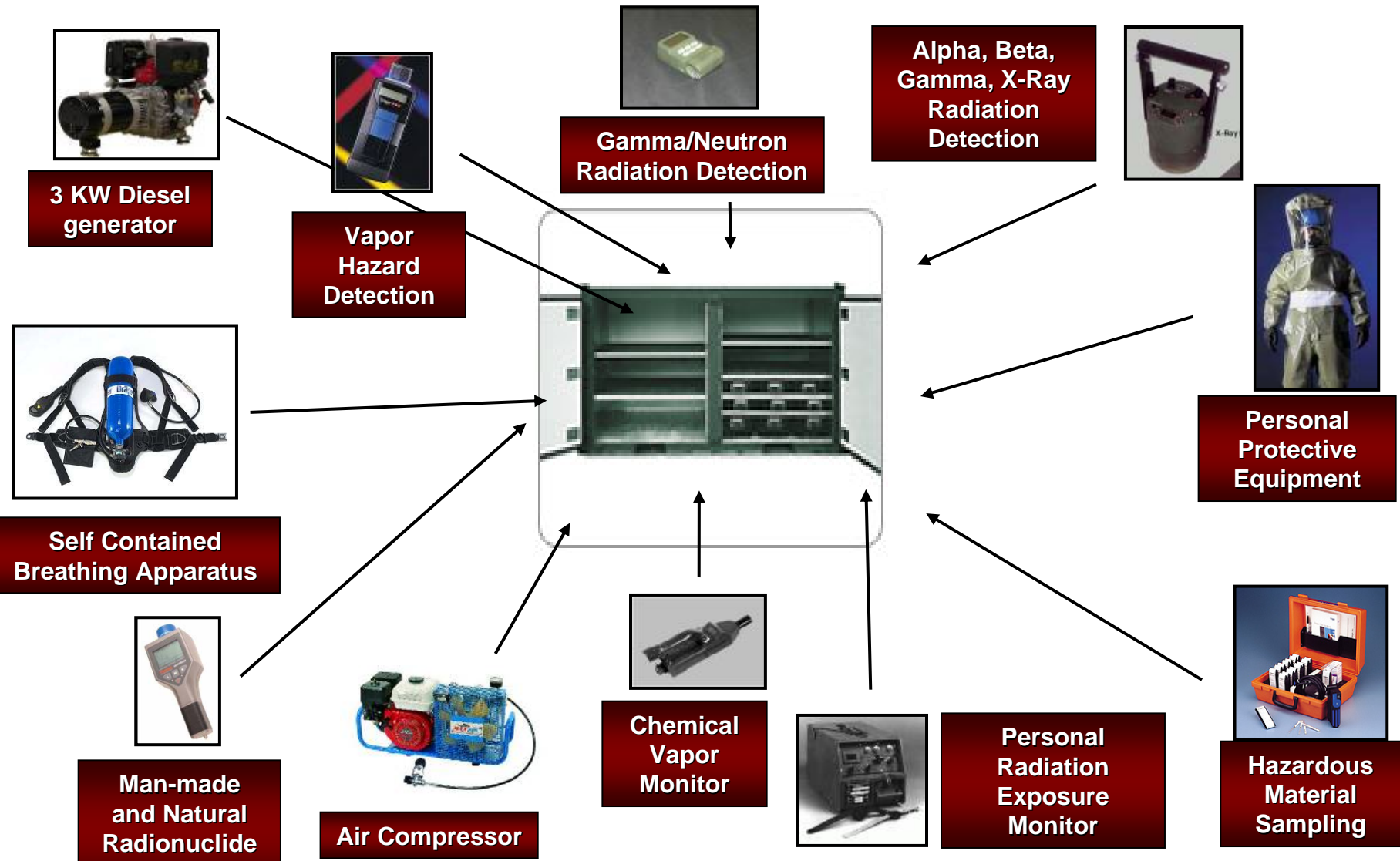


Ricoh Secure Fax (1)
for secure facsimiles

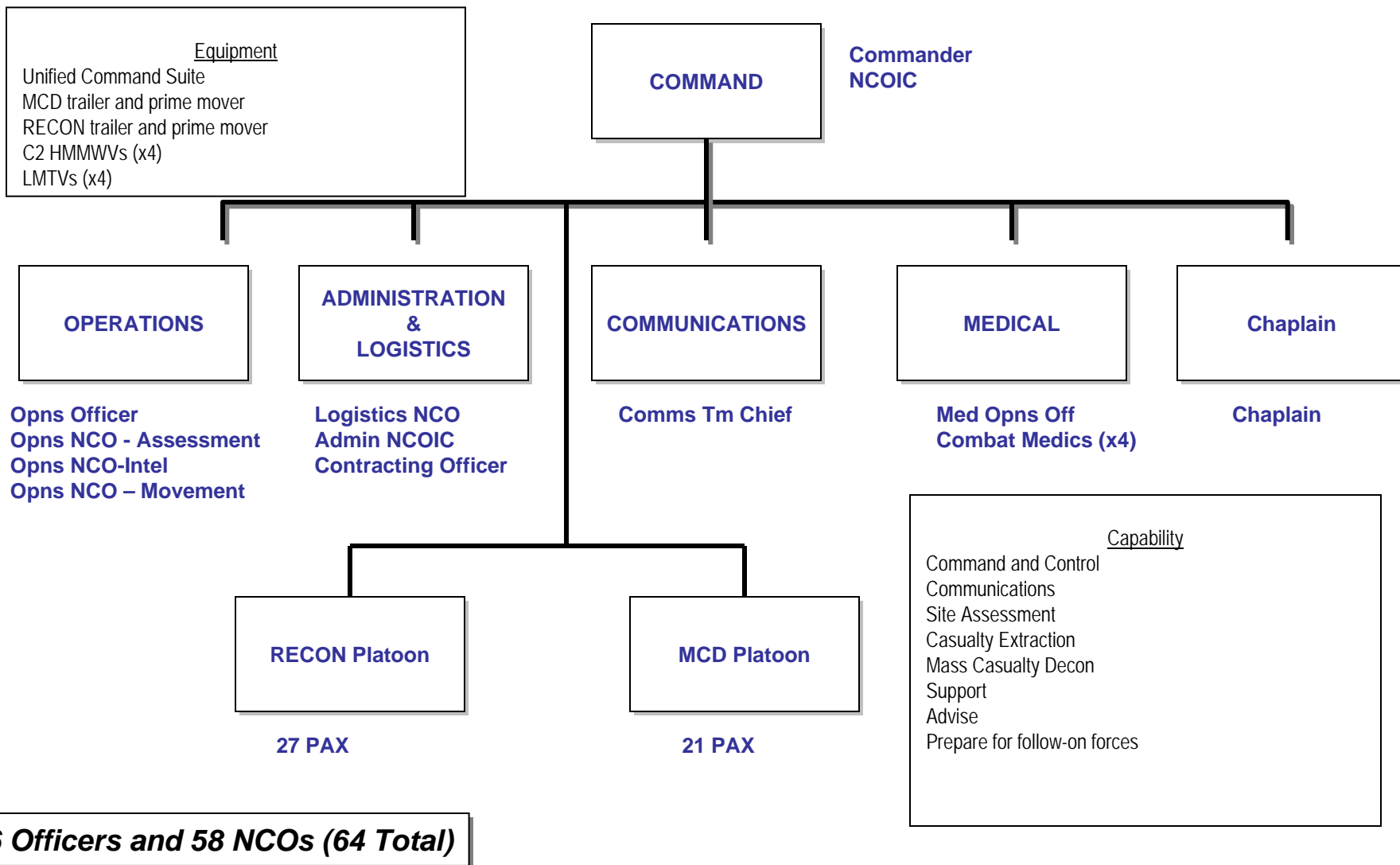
CIRT (L) RECON Equipment



CIRT (L) RECON Equipment



CBRNE Initial Response Team (Heavy)



CIRT (H) Capability

- Same as Initial CBRNE Response Team (Light)
- **Plus:**
 - Remainder of RECON platoon
 - MCD platoon

CIRT (H) Communications Equipment

- Unified Command Suite (UCS). Mobile command and control system. Provides communications to command, technical references, and information databases.
 - Data: UHF/VHF, SATCOM, INMARSAT, NIPRNET, SIPRNET, and Video
 - Air Transportable by C-130, C-141, C-5, C-17



CIRT (H) RECON Platoon

- Personal Protective Equipment (PPE). Standard chemical defense equipment for warfare agents, Level A and Level B Ensembles for hazardous material protection.
- RECON Trailer and prime mover
- Cascade system
- Conducts site assessment (identify, classify, sample collection)
- Determines protective measures and PPE requirements
- Emergency casualty extraction



Picture of RECON
Decon line

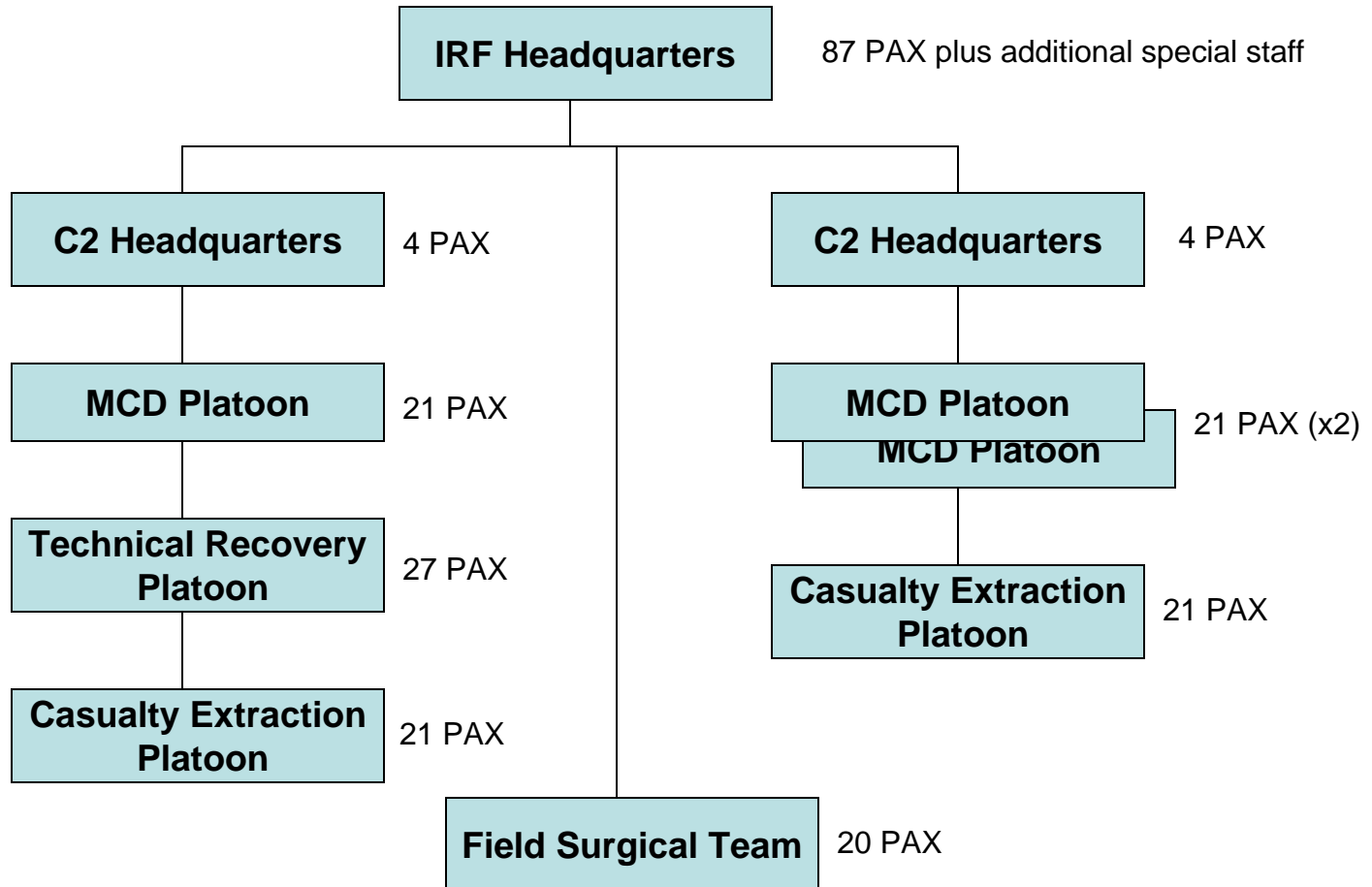
CIRT (H) MCD Platoon

- MCD Trailer and Prime Mover
- Operational within 30 minutes
- 20 non-ambulatory per hour
- 75 ambulatory per hour
- Work rest cycle approximately two hours (decreased during Heat Category 3-5 conditions)



Mass casualty
Decontamination
Tent

CIRF Balance



Remaining 247 PAX

Balance of CIRF

- 3 additional MCD platoons (3 DECON trailers and prime movers and MTOE equipment)
- 2 casualty extraction platoons (2 DECON trailers and prime movers and MTOE equipment)
- C2 and service support elements for sustained operations (Battalion and 2 Company headquarters and MTOE equipment)
- Remainder of Field Surgical Team (MTOE equipment)
- Technical Rescue Platoon (1 Recon Trailer and prime mover and MTOE equipment)

Technical Recovery Platoon

- Listening device magnifies faint or distant sounds
- Thermal imaging camera images through walls can assist Search And Rescue teams in locating victims
- Powered Air Purifying Respirator (PAPR) provides user with constant, filtered airflow and positive pressure
- Training for confined space entry
- Training for vehicle extraction
- Training for collapsed structure recovery



Casualty Extraction Platoons (x2)

- Personal Protective Equipment (PPE). Standard chemical defense equipment for warfare agents, Level A and Level B Ensembles for hazardous material protection.
- DECON capability
- 8 two-man extraction teams per platoon



CIRF Total Capability

- 1 x RECON Platoon – 3 site assessment teams for multiple locations or continuous coverage at single location.
- 4 x MCD Platoon – one to four MCD sites. Capable of 80 non-ambulatory and 225 ambulatory per hour. Requires augmentation for operations greater than 2 hours.
- 2 x Casualty Extraction Platoons – provides up to 20 entry teams to extract casualties.
- 1 x Technical Recovery Platoon – provides up to 10 specialty entry teams to extract casualties.
- 2 Company Headquarters - provides support to sustain platoons for continuous operations
- 1 Battalion Headquarters – provides C2 and communications capability for continuous operations
- 1 Field Surgical Team – provides medical support to the CIRF

CIRF Elements

	Personnel	Equipment	Capability
CIRT (L)	23	Mobile commo set Mobile RECON set 1 LMTV (x1) Cmd and Ctl HMMWV (x4)	Site Assessment Command and Control Communications Support Advise Prepare for follow-on forces
CIRT (H)	64	Unified Command Suite MCD trailer and prime mover RECON trailer and prime mover C2 HMMWVs (x4) LMTVs (x4)	Command and Control Communications Site Assessment Casualty Extraction (10 tms) Mass Casualty Decon (1 plt) Support Advise Prepare for follow-on forces
CIRF	311 plus 8 additional Special Staff	Unified Command Suite 4 MCD trailers with F-550s 4 RECON trailers with F-550s 20 HMMWVs 29 LMTVs	

CIRF Concept

- Can be inserted by civilian or military ground, rail, or air transportation
- Provides an initial response team to assess the incident scene
- Provide Command and Control
- Establish communications
- Support civil authorities at incident scene
- Assess current and projected consequences
- Advise on response measures
- Chemical, biological and/or radiological assessment of incident scene (identify, classify and sample)

Additional Special Staff Requirements

- Engineer Officer
- PAO
- Finance Specialist
- Legal NCO
- Contracting Officer
- Technical Escort
- Nuclear Officer SME
- Environmental Specialist