

# *Operational Test and Evaluation Force*



*National Test and Evaluation UV Conference Brief*  
*RDML Stephen S. Voetsch*

*February 2008*  
*UNCLASSIFIED*



# COMOPTEVFOR

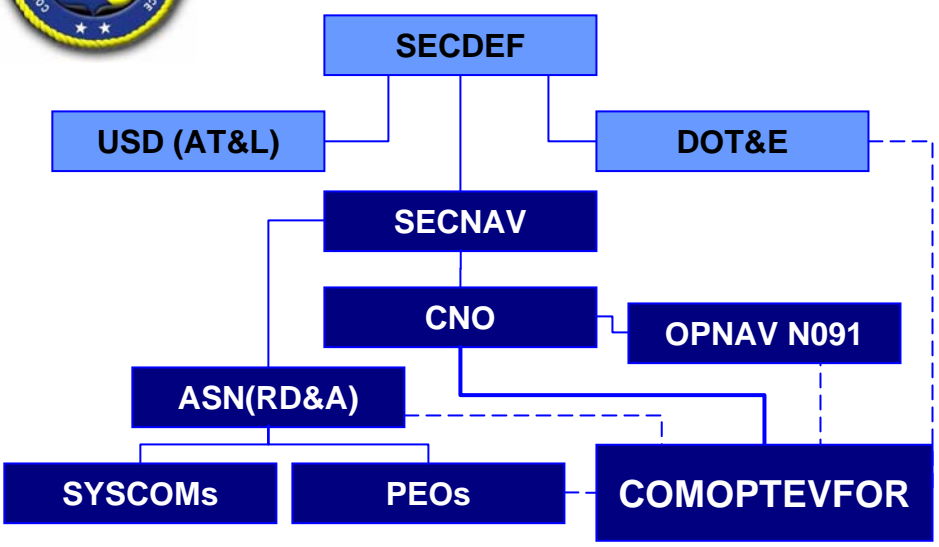
Who we are

- Overview
- Mission Based Test Design
- Integrated Test
- Open Architecture
- Unmanned Vehicles
  - History – Present – Future
- OPTEVFOR Role in Capabilities & Requirements
- Discussion

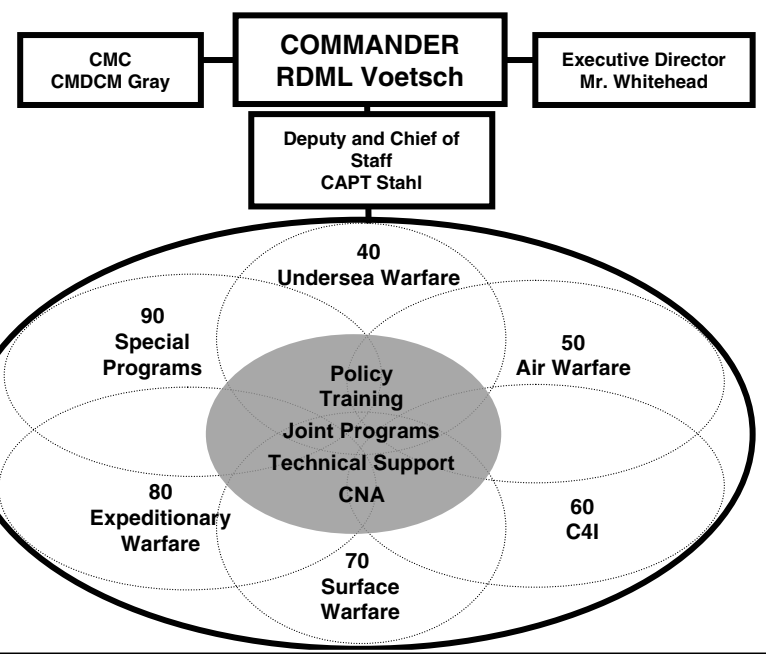




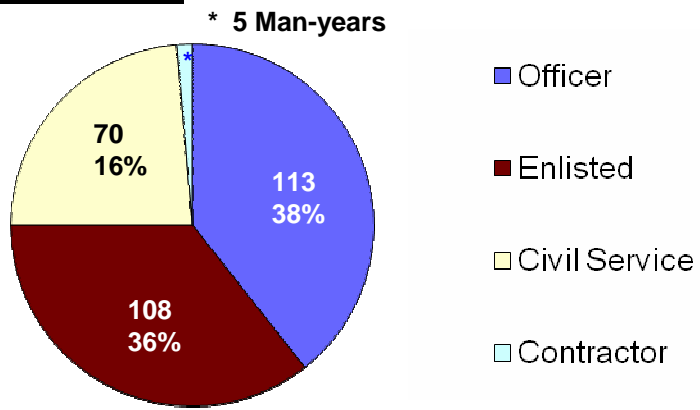
# Portfolio



Note: Dotted line = coordination



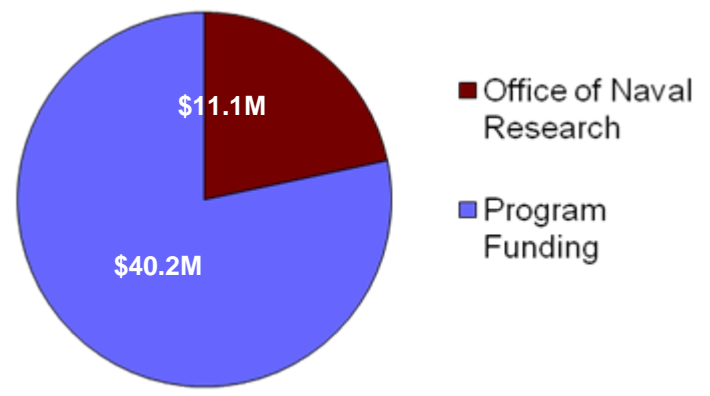
## Workforce



**COTF Headquarters Total: 296**  
 (Does not include approx 135 Program Funded Contractors)

As of 01DEC2007

## Budget



**FY07: \$51.3M**



# Portfolio

## Undersea Warfare

ARC-I  
VA Class ESM System  
MK48 ADCAP  
SSGN Class  
VA Class  
ISIS  
Photonics Mast

## Surface Warfare

Aegis Ballistic Missile Defense  
USCG Multi-Mission Coastal Helo  
SSDS  
CEC  
Evolved Sea Sparrow  
CIWS Block 1B  
DDG 1000  
LPD-17  
Rolling Airframe Missile  
Tomahawk  
DDG 51  
LCS  
SPY-1D  
T-AKE  
LHA-6

## Air Warfare

EA-18G Growler  
FA-18 ATFLIR  
AESA  
FA-18E/F H4E  
AH-1W Helo Night Targeting  
System  
AIM-9X  
Improved Extended Echo  
Ranging System  
IDECM  
JMPS  
JSOW-C  
V-22  
VH-71  
H-1 Upgrade  
JSF  
SLAM ER  
JDAM  
USQ-113  
EA-6B  
CVN-21  
JPATS  
AARGM

## C4I

ERP  
Tactical/Mobile  
NGEN  
Maritime Domain Awareness  
SEWIP  
GCCS-M  
Wideband Global SATCOM  
CSEL  
JICO support System  
Net Centric Enterprise  
Services

## Expeditionary Warfare

JBPDS  
JCAD  
JEOD  
JSAM  
SRDRS  
Sea Eagle ACTD  
JWARN  
Joint Effects Model

Program list not all inclusive



# *Navy Initiatives*

---

- **The Navy's Provider Enterprise**
  - **(T&E Board of Directors)**
- **T&E Cycle Time Reduction**
- **Mission Based Test Design**
- **Integrated Testing**



# *Single Process Owner*

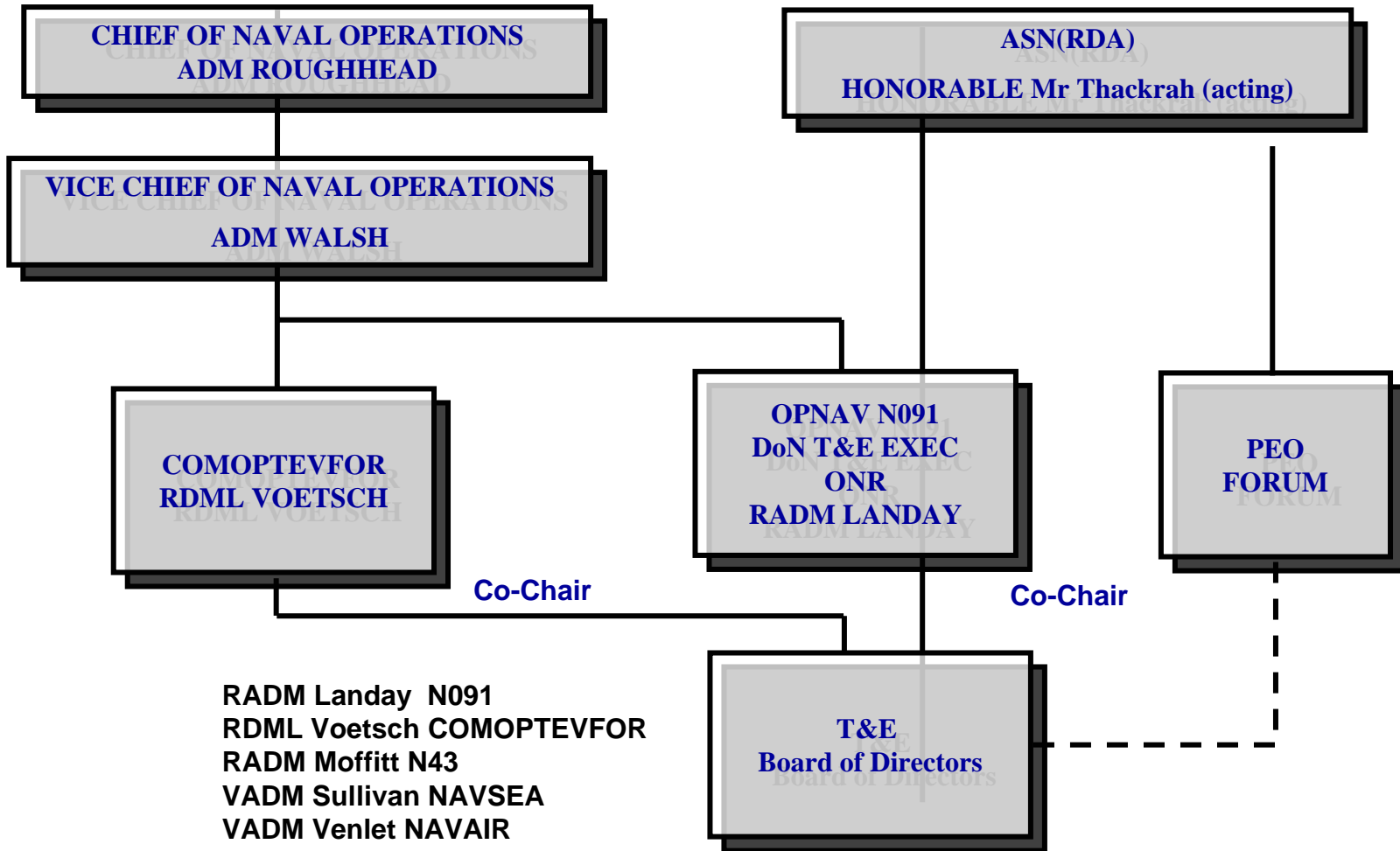
---

***“The need for a T&E capability that is synchronized with product procurement across the spectrum is critical to support the Navy’s future war fighting needs. As part of the enterprise integration of T&E there is a need for a single Navy T&E process owner. An additional dimension is the need for a more effective and efficient business model in the relationship between government and industry, the desire to achieve synergism, and produce a “win-win” situation for both entities.”***

COMOPTEVFOR “Streamline T&E” Report to CNO July 2005



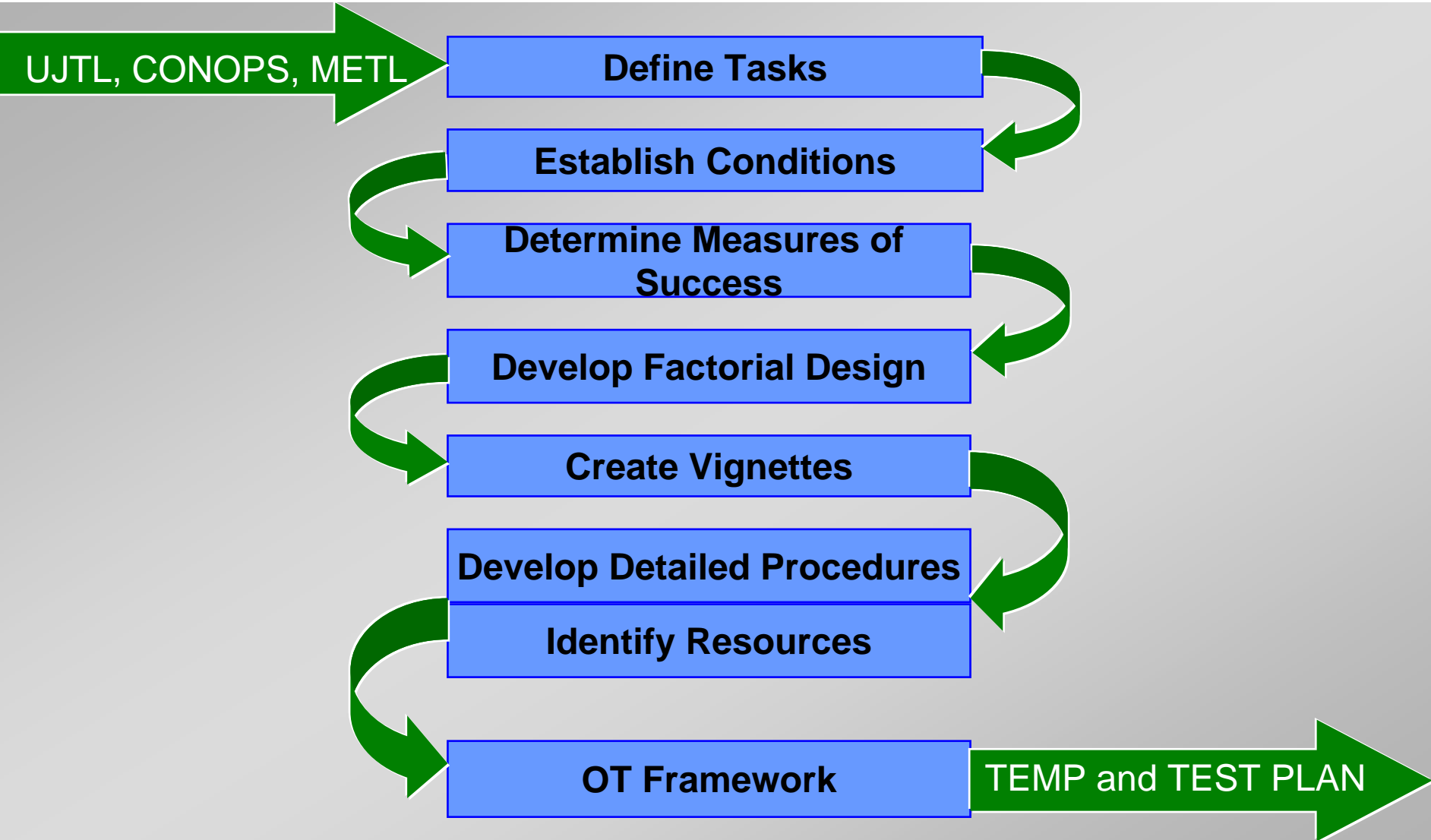
# T&E Board of Directors



RADM Landay N091  
RDML Voetsch COMOPTEVFOR  
RADM Moffitt N43  
VADM Sullivan NAVSEA  
VADM Venlet NAVAIR  
RDML Bauchmann SPAWAR  
Ms Margret Harrell SES FFC  
Program Executive Office



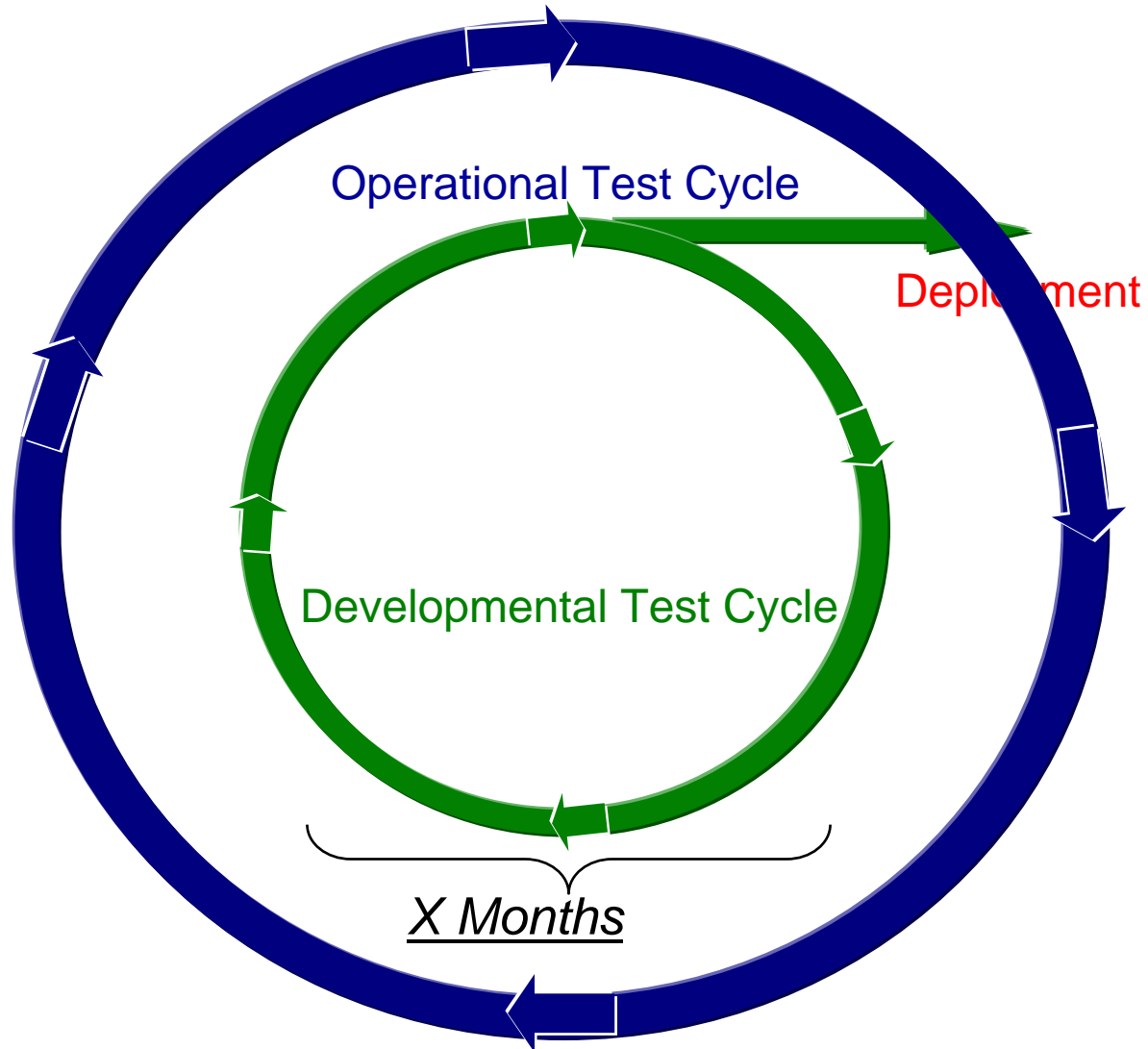
# *Mission Based Test Design*





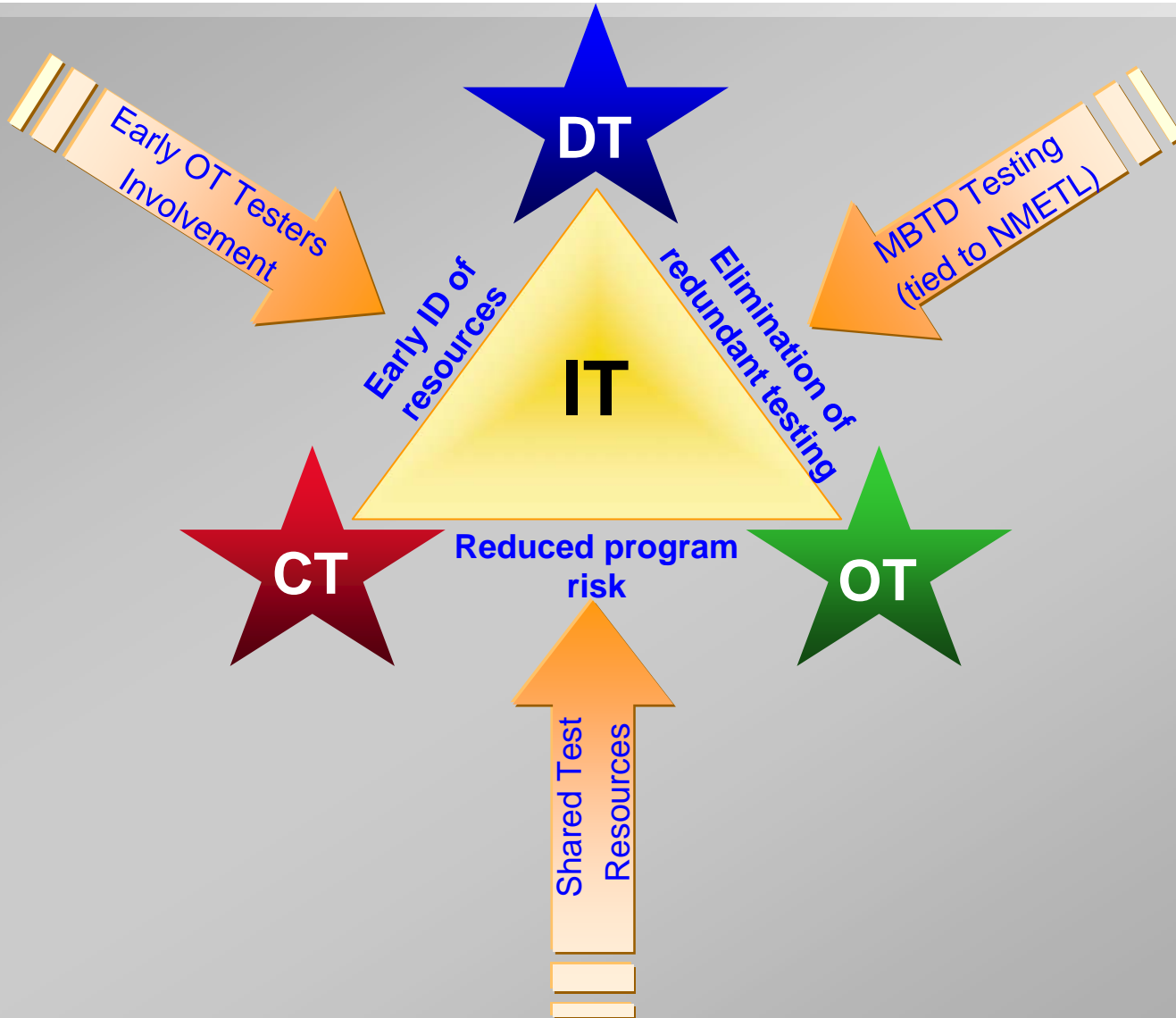


# *Future T&E Cycles*





# *Integrated Test*





# *Integrated Test*

**“Integrated testing is the collaborative planning and collaborative execution of test phases and events to provide data in support of independent analysis, evaluation and reporting by all stakeholders particularly the developmental (both contractor when appropriate and government) and operational test communities.”**

# *Operational Test and Evaluation Force*



*National Test and Evaluation UV Conference Brief*  
*RDML Stephen S. Voetsch*

*February 2008*  
**UNCLASSIFIED**

