



The 21st Century Army Reserve

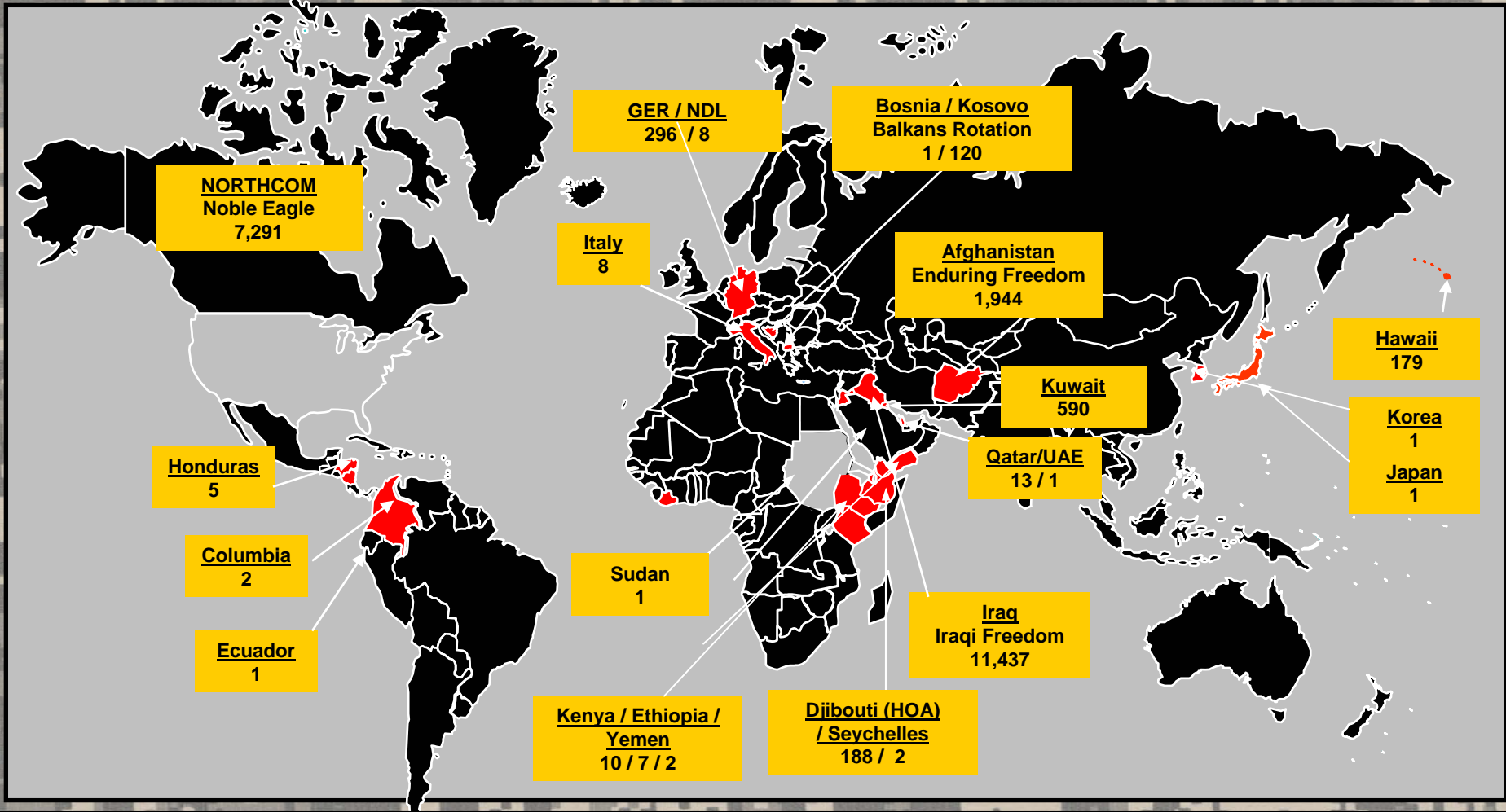


LTG Jack Stultz Chief, Army Reserve

NDIA Tactical Wheeled Vehicle Conference 2008



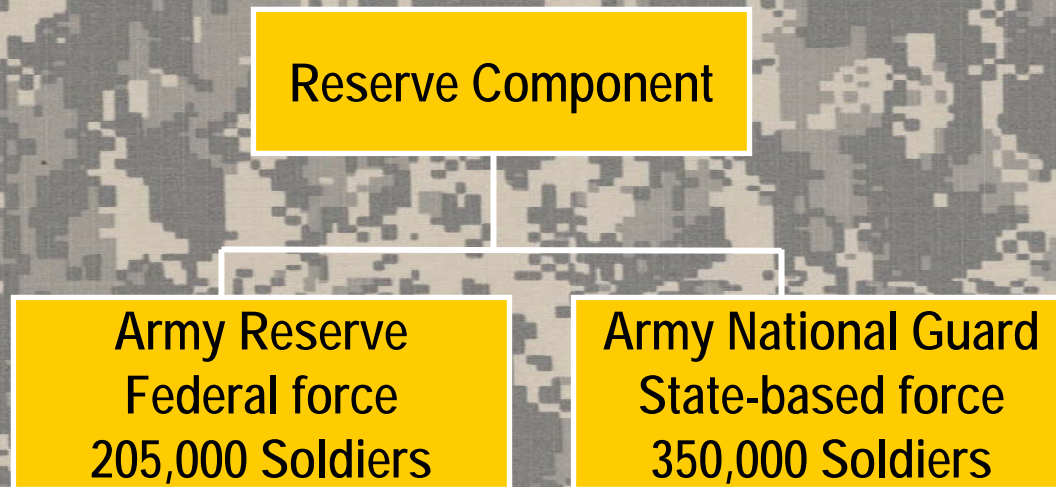
AR Support to Global Operations



Since 9/11, more than 183,000 Army Reserve Soldiers have mobilized in support of global operations. More than 7,000 are serving our Nation here at home today.



Integral to the Army



The Army Reserve is the Federal Operational Reserve

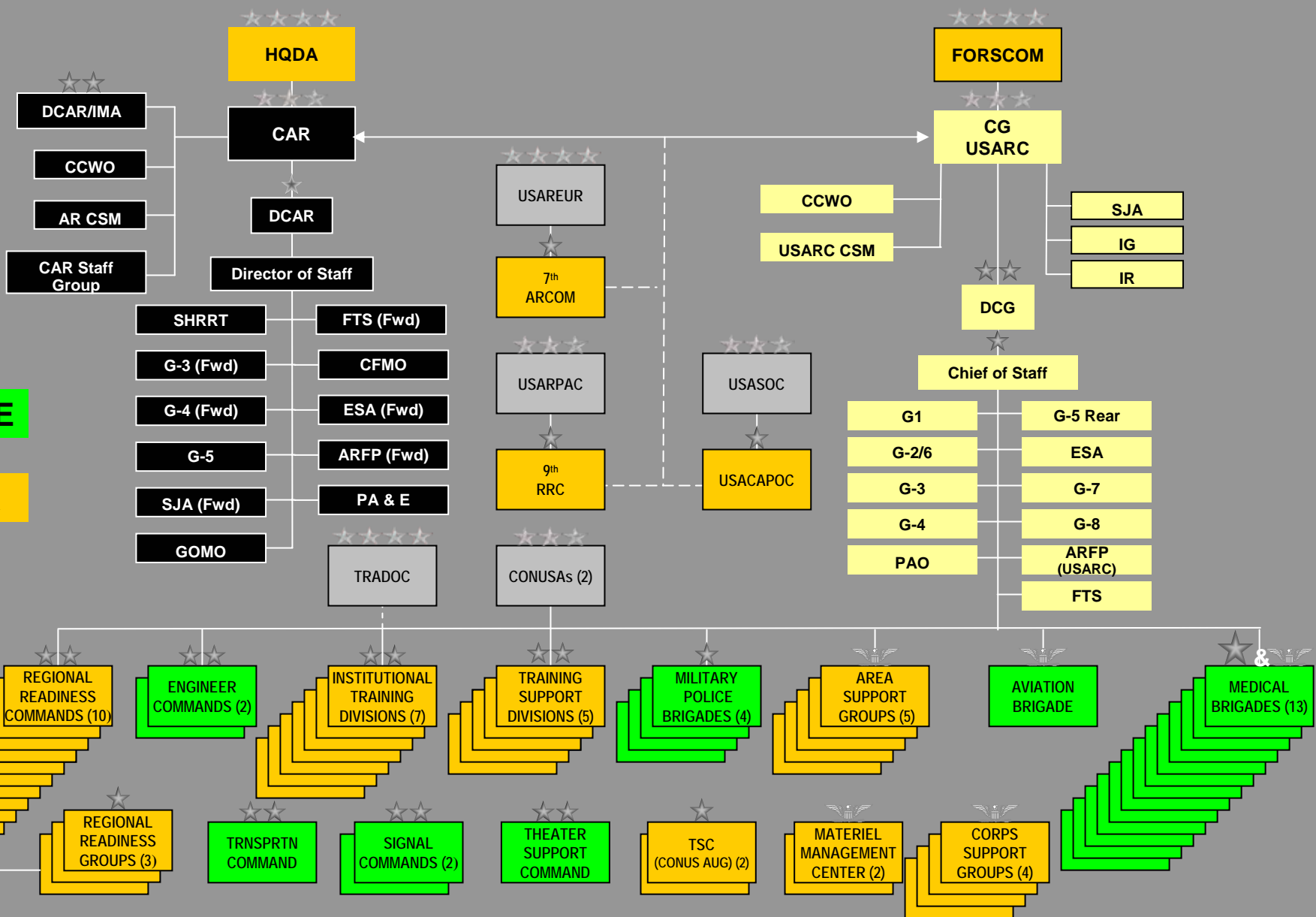
- More than **22,400** Army Reserve Soldiers Mobilized
- More than **183,000** mobilized since 9/11
- **153** have made the ultimate sacrifice
- **12,930** have been mobilized for 1-2 years
- **12,464** have been mobilized for 2-3 years
- **16,114** have been mobilized for > 3 years



Army Reserve in the Past

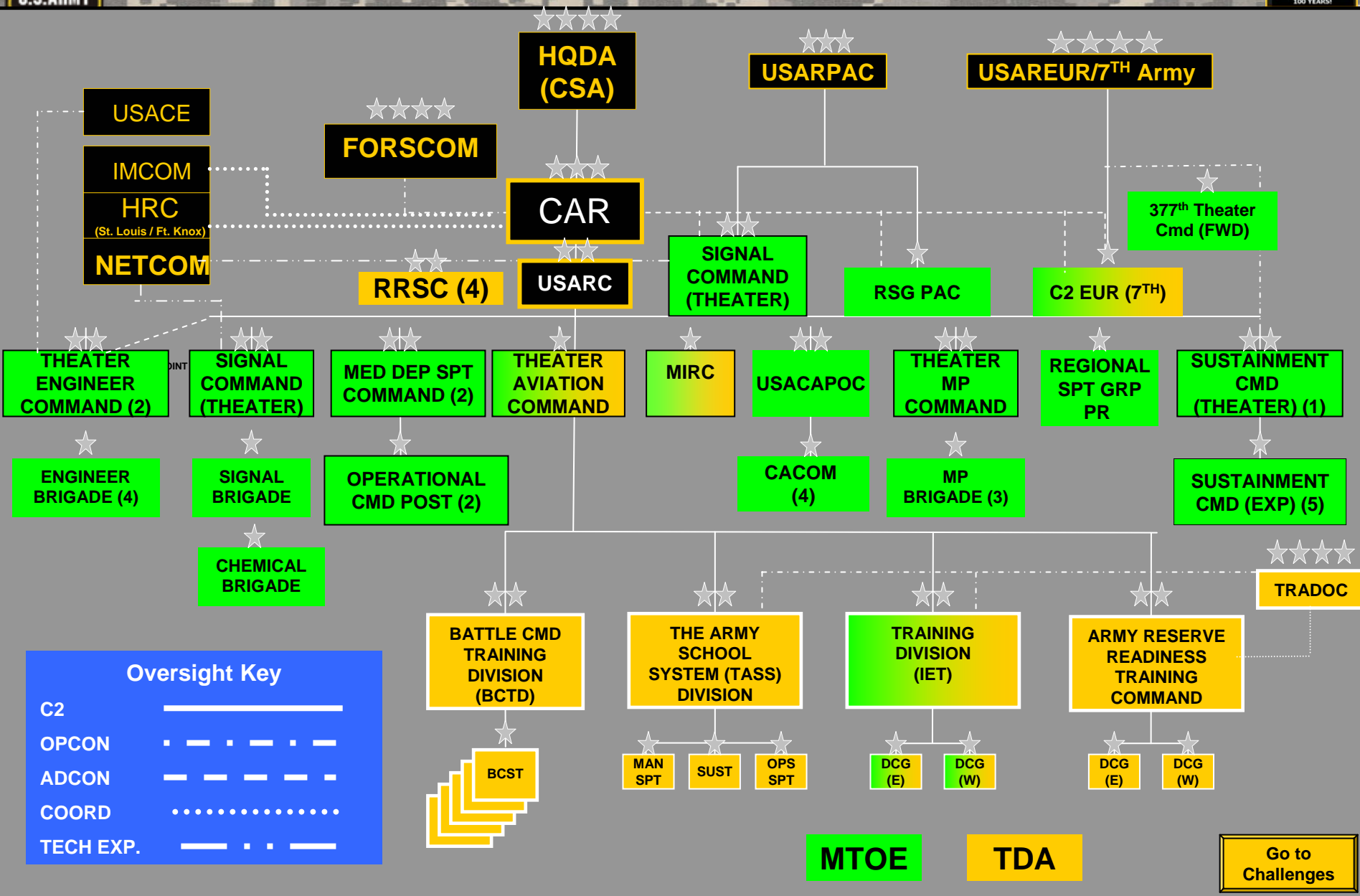


MTOE
TDA





Army Reserve Transformed



Oversight Key

- C2: _____
- OPCON: - - - - -
- ADCON: - - - - -
- COORD:
- TECH EXP.: - - - - -

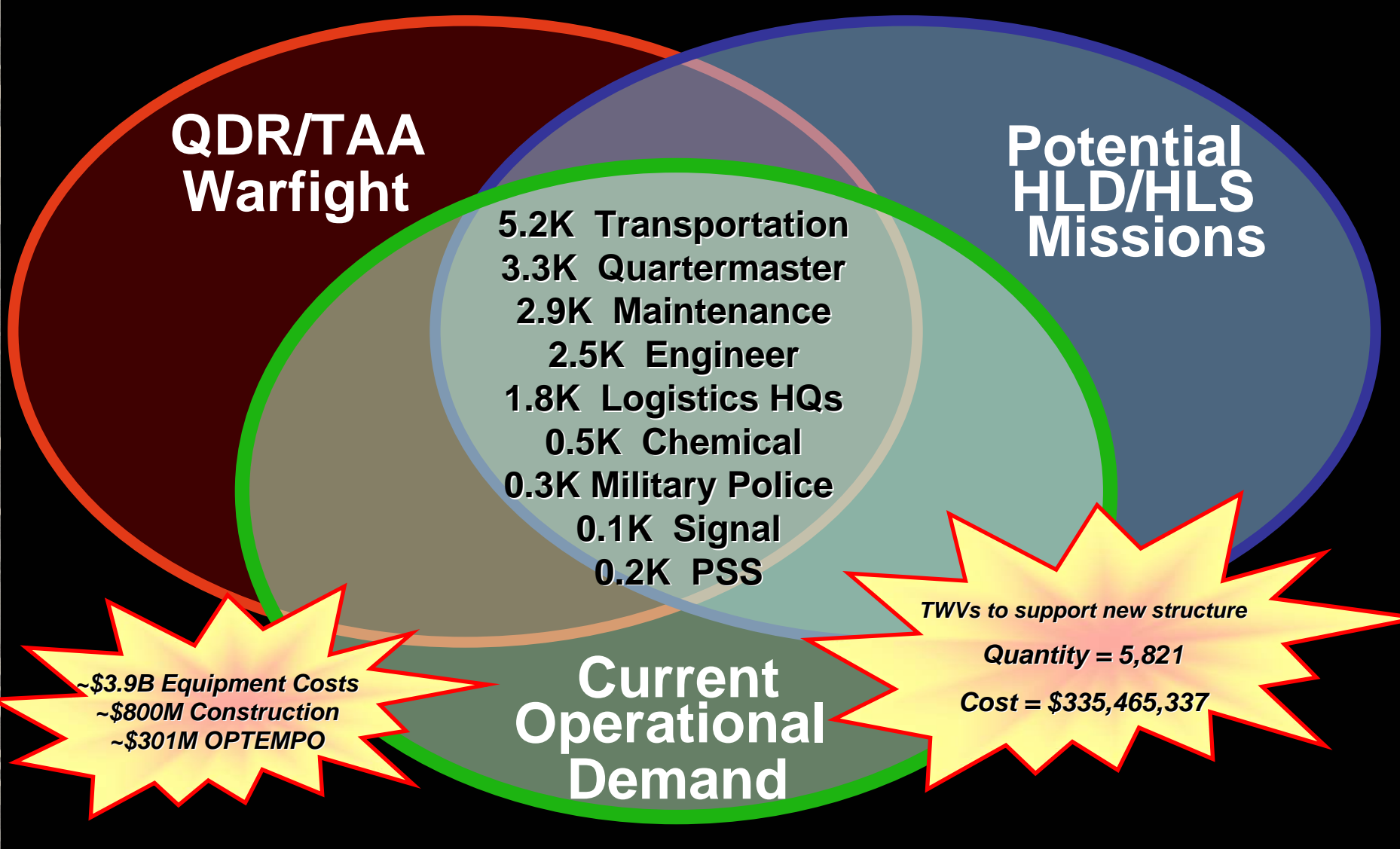
MTOE

TDA

Go to Challenges



Growing Structure



**QDR/TAA
Warfight**

**Potential
HLD/HLS
Missions**

- 5.2K Transportation
- 3.3K Quartermaster
- 2.9K Maintenance
- 2.5K Engineer
- 1.8K Logistics HQs
- 0.5K Chemical
- 0.3K Military Police
- 0.1K Signal
- 0.2K PSS

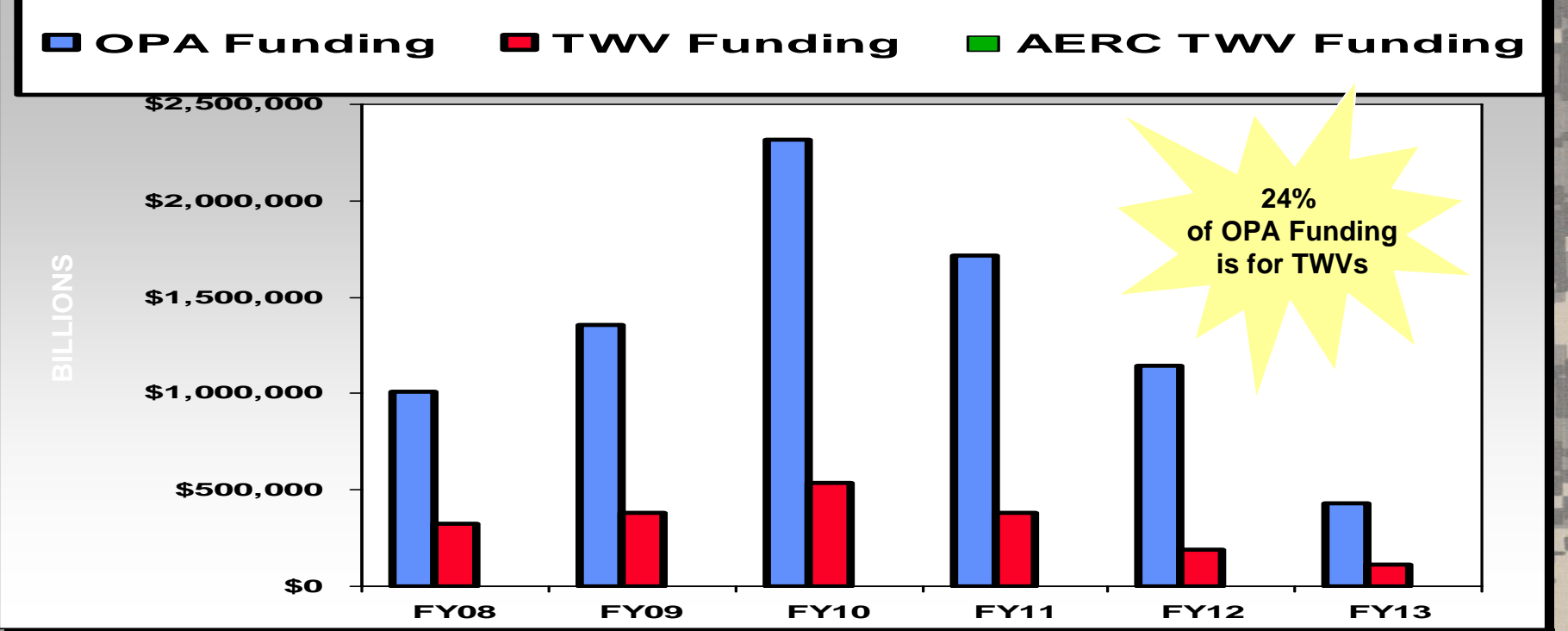
**Current
Operational
Demand**

~\$3.9B Equipment Costs
~\$800M Construction
~\$301M OPTEMPO

TWVs to support new structure
Quantity = 5,821
Cost = \$335,465,337



New Procurement Funding Projections Other Procurement, Army (OPA) for FY 08-13



	FY07	FY08	FY09	FY10	FY11	FY12	FY13	TOTAL
Projected OPA Funding	N/A	\$1.007B	\$1.354B	\$2.315B	\$1.714B	\$1.141B	\$0.427M	\$7.948B
Projected TWV Funding	N/A	\$0.325M	\$0.383M	\$0.536M	\$0.382M	\$0.191M	\$0.111M	\$1.928B
AERC TWV Funding			← \$225M →					

***Army Equipping & Re-Use Conference (AERC):** Equipment Distributions are for Deploying and Next Deploy Forces over 2 year increments and ensure our Soldiers receive the most modern equipment available.



Army Reserve Challenge: TWV Modernization Requirements



<i>EQUIPMENT ITEM</i>	<i>TOTAL REQ</i>	<i>ON HAND</i>	<i>SHORT</i>
LMTV (2.5 TON TRUCK)	6367	1086	5281
MTV (5-TON TRUCK)	9460	319	9141
TRUCK TRACTOR LINE HAUL (M915A3)	2608	481	2127
TRUCK TRACTOR LIGHT EQUIPMENT TRANSPORT (M916A3)	894	0	894
ARMORED SECURITY VEHICLE: WHEELED W/MOUNT (ASV)	256	0	256
TRAILER CARGO: FMTV W/DROPSIDES M1095/M1082	3789	249	3540
LIGHT TACTICAL TRAILER: 3/4 TON	5454	2978	2476
PLS TRAILERS	1264	687	577
TRUCK CARGO PLS 10x10 M1075	905	622	283
TRUCK DUMP 20 TON (M917)	397	307	90
HIGH MOBILITY MULTI-PURPOSE WHEELED VEHICLE (HMMWV)	15688	9123	6565
HIGH MOBILITY MULTI-PURPOSE WHEELED VEHICLE (HMMWV) UP-ARMORED M1114	1561	7	1554
SEMI-TRAILER TANK 5000K GAL FUEL DISPENSING AUTOMOTIVE REFUELER (M969A2/A3)	611	9	602
SEMI-TRAILER TANK 5000K GAL FUEL BULK HAUL (M967A2)	1500	299	1201
SEMI-TRAILER LOW BED: 40 TON 6 WHEEL W/E	943	521	422

The Army Reserve Requires Approximately \$5B in TWV Modernization



Employer Partnership

Employer Pilot Programs

- **American Trucking Associations**
- **Con-Way Trucking**
- **Inova Health Care**
- **Tyson's**
- **Unisys**



Family Support





U.S. ARMY



Questions?

