

This Brief is Classified:
UNCLASSIFIED



Joint Task Force Civil Support

JCBRN Conference

24 June 2009



UNCLASSIFIED

Catastrophic Concerns





“The scenarios... are so hard for us to contemplate and so emotionally traumatic that it is tempting to push them aside. However now is the time to have this difficult conversation.” Sen Joseph Lieberman(I-Conn)



"In my opinion, the prospects of a future attack against the United States are almost certain. *It's not a matter of if, but when.*"

Former Vice President Dick Cheney



"It will happen again..." General McCaffrey



UNCLASSIFIED

...A Matter of When





USNORTHCOM Mission Statement

USNORTHCOM *anticipates* and conducts Homeland Defense and Civil Support operations within the assigned area of responsibility to *defend, protect, and secure* the United States and its interests





NORTHCOM's Role

- **Ensure U.S. Homeland is a difficult target**
 - Layered defensive networks of systems, devices, personnel and information.
 - Significant investment in chemical and biological defense, protection and response technologies.
 - World leader CBRNE related science and technology, research and development, and testing and evaluation.





NORTHCOM Capabilities

- **A robust CBRNE detection and attribution infrastructure.**
 - CBRNE forensics are used to determine the origin of threat materials in both pre and post events.
 - Bio-forensic capability demonstrated in the aftermath of the 9/11 attacks. Maturing science that faces legal examination.
 - Law enforcement employs advanced techniques to detect explosives and drug residue in fingerprints.





ARNORTH Mission Statement

USARNORTH conducts Homeland Defense (HLD) and Civil Support (CS) operations, and Theater Security Cooperation (TSC) activities, as the Army Service Component Command (ASCC) to U.S. Northern Command in order to protect the American people and their way of life. On order, USARNORTH commands and controls deployed forces as a Joint Task Force (JTF) or Joint Force Land Component Command (JFLCC).





UNCLASSIFIED

JTF-CS Mission

JTF-CS **anticipates, plans and integrates** USNORTHCOM Chemical, Biological, Radiological, Nuclear, and high-yield Explosive (CBRNE) Consequence Management operations and **when directed**, establishes command and control of DoD forces for a CBRNE incident to **assist** local authorities in saving lives, preventing injury, and providing temporary critical life support



USNORTHCOM Organization Chart

Geographical Combatant Command



The President



Secretary of Defense

Relationships

..... Coordinating

— COCOM/OPCON

- - Supported/Supporting

U.S. Coast Guard



STANDING JOINT FORCE HEADQUARTERS - NORTH



JOINT TASK FORCE ALASKA



JOINT FORCE HEADQUARTERS NATIONAL CAPITAL REGION



National Guard Bureau



ARNORTH JFLCC



JOINT TASK FORCE CIVIL SUPPORT

AFNORTH JFACC



JOINT TASK FORCE NORTH

MARFORNORTH



DCO



EPLO

FLEET FORCES COMMAND JFMCC



OPCON TACON

UNCLASSIFIED



“It is bringing **capability** and **capacity** at the **right time** at the **right place**, not overwhelming the receiving state, but bringing in **something that is sorely needed...the governor is the commander in his or her state.**” “...not too soon, but not a second too long...”

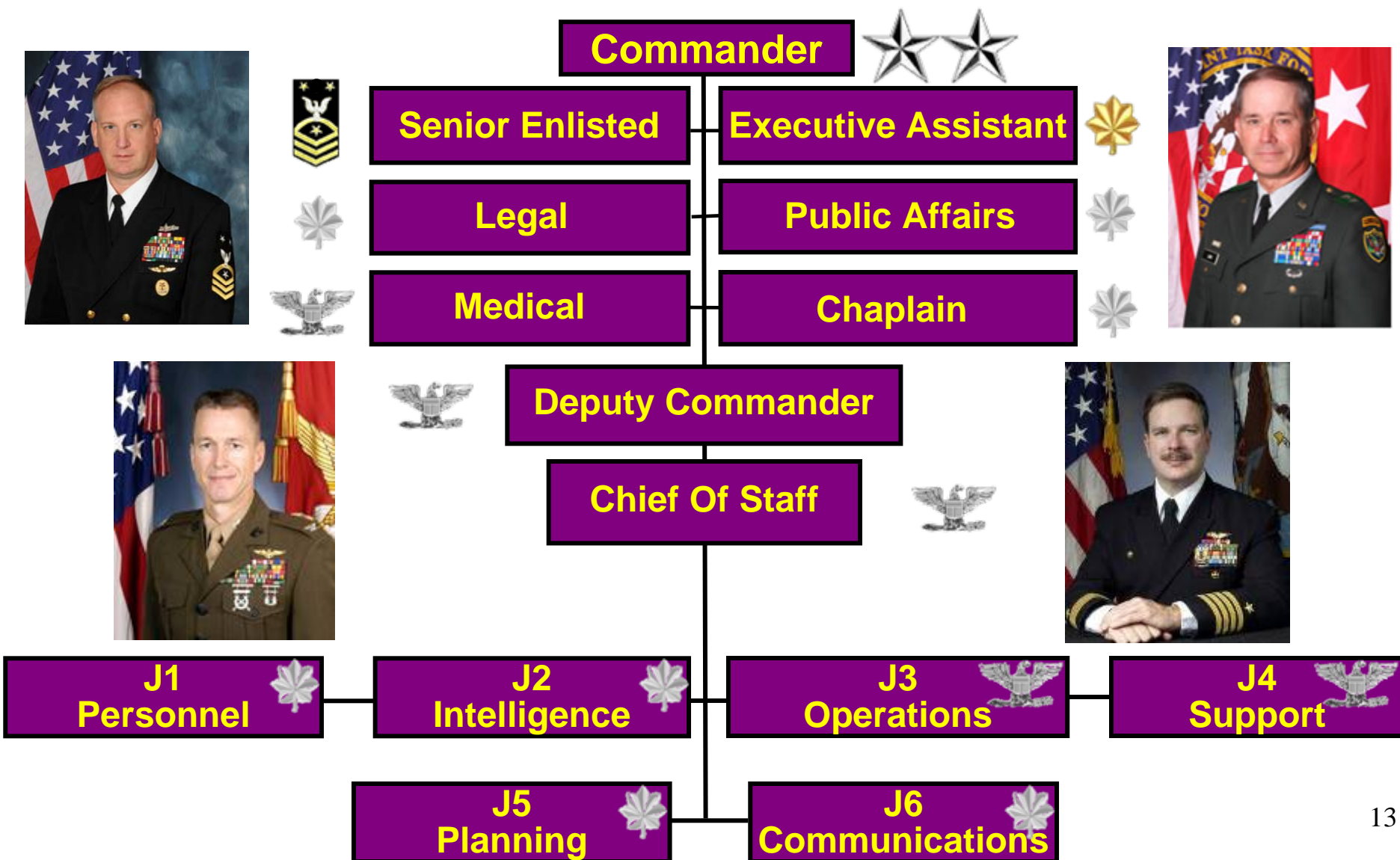
General Victor E. Renuart Jr.
Commander
NORAD & USNORTHCOM

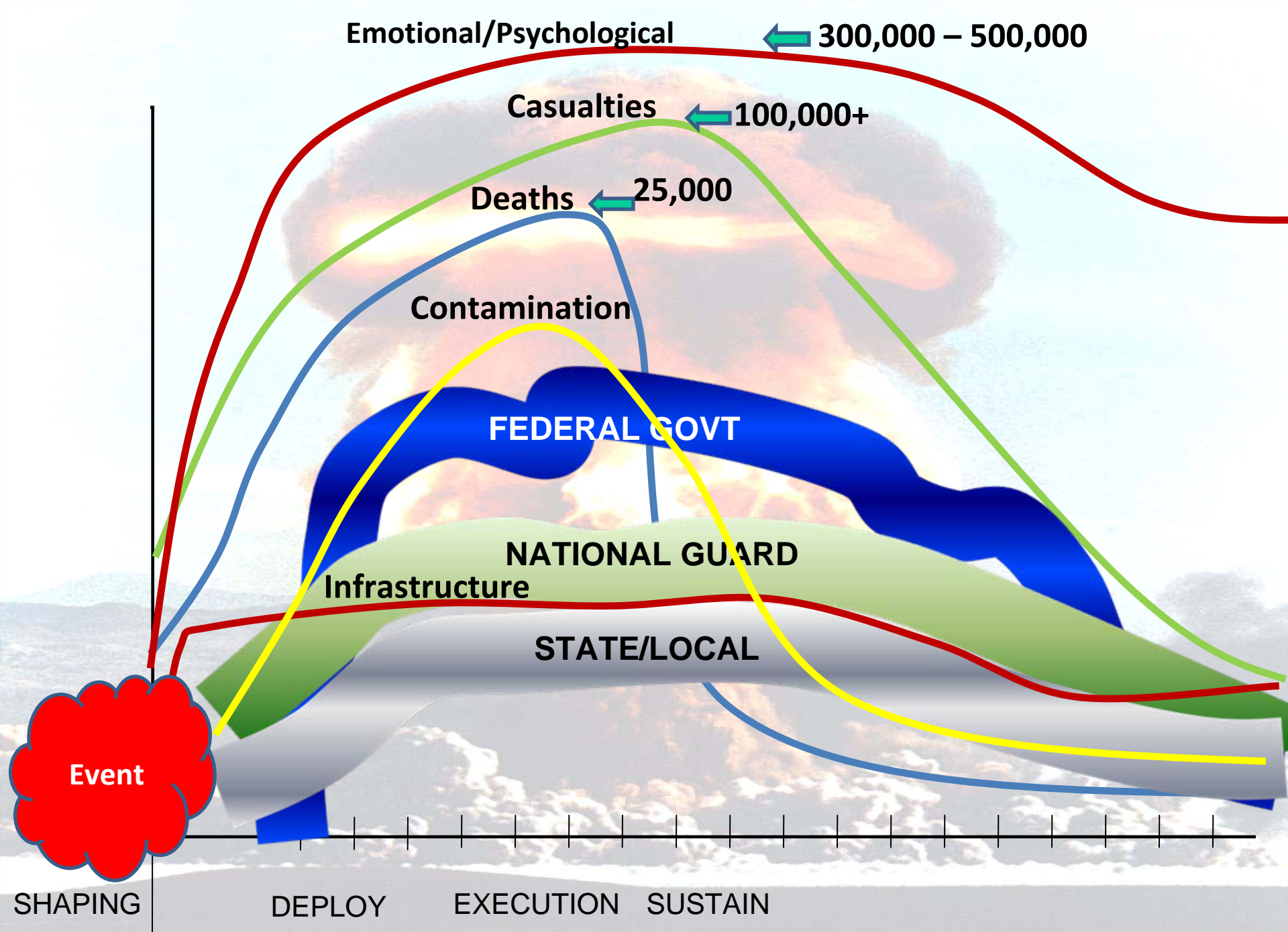




UNCLASSIFIED

JTF-CS Structure







Area of Responsibility

JTF-CS provides CBRNE planning, exercise, and response support within the U.S., its territories, and possessions

USPACOM

Hawaii

Guam

American Samoa

Commonwealth of
Northern
Mariana Islands

Federated States of
Micronesia, Marshall
Islands, and Palau

USNORTHCOM

CONUS and Alaska

Puerto Rico

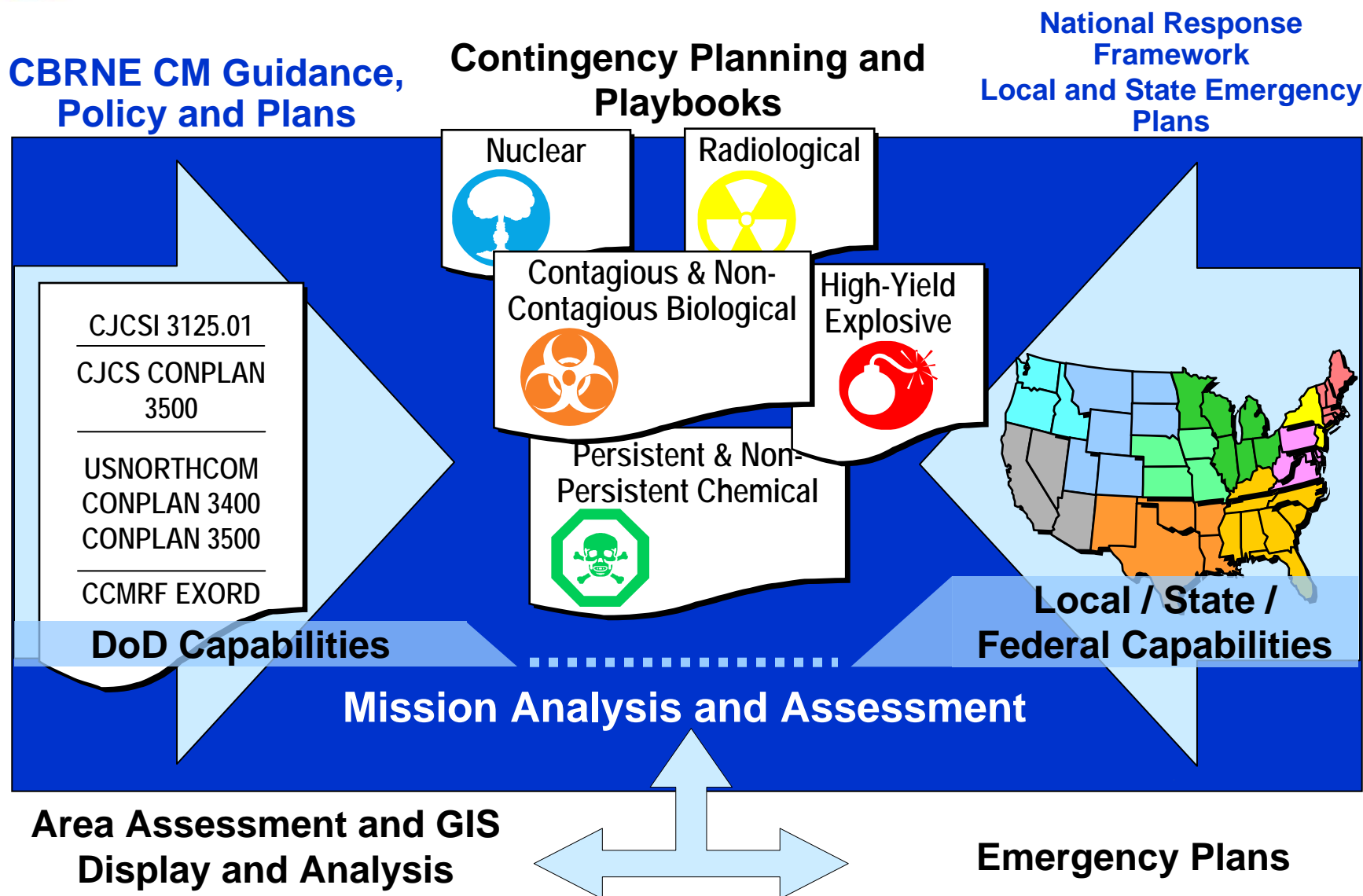
US Virgin
Islands



- Big Country
- Lots of POC's
- Diverse/Varied



Deliberate Planning - Preparedness





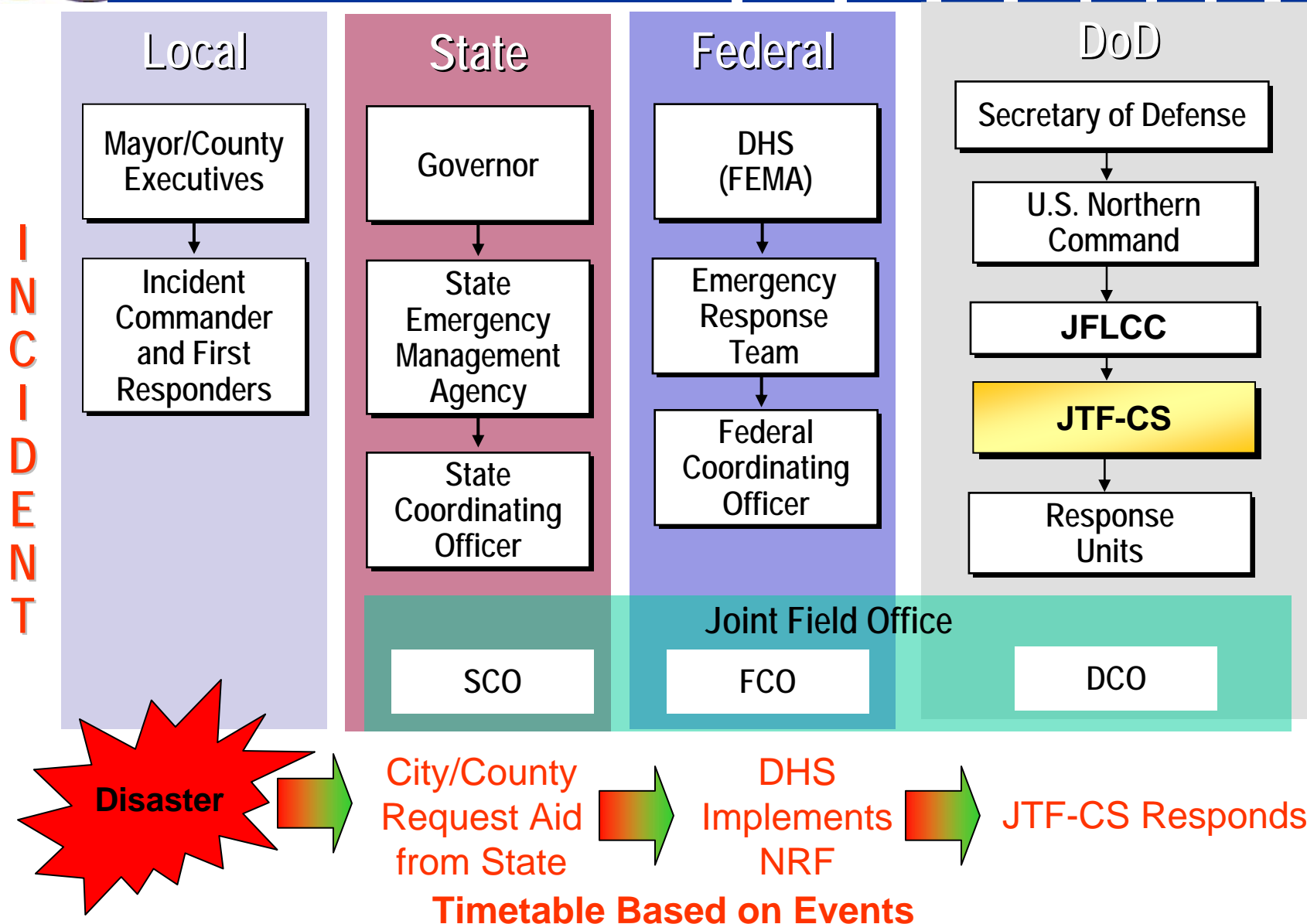
“...find the right way to put together **capabilities** of the **federal government** in support of the **capabilities of the state**...”

General Victor E. Renuart Jr.
Commander
NORAD & USNORTHCOM





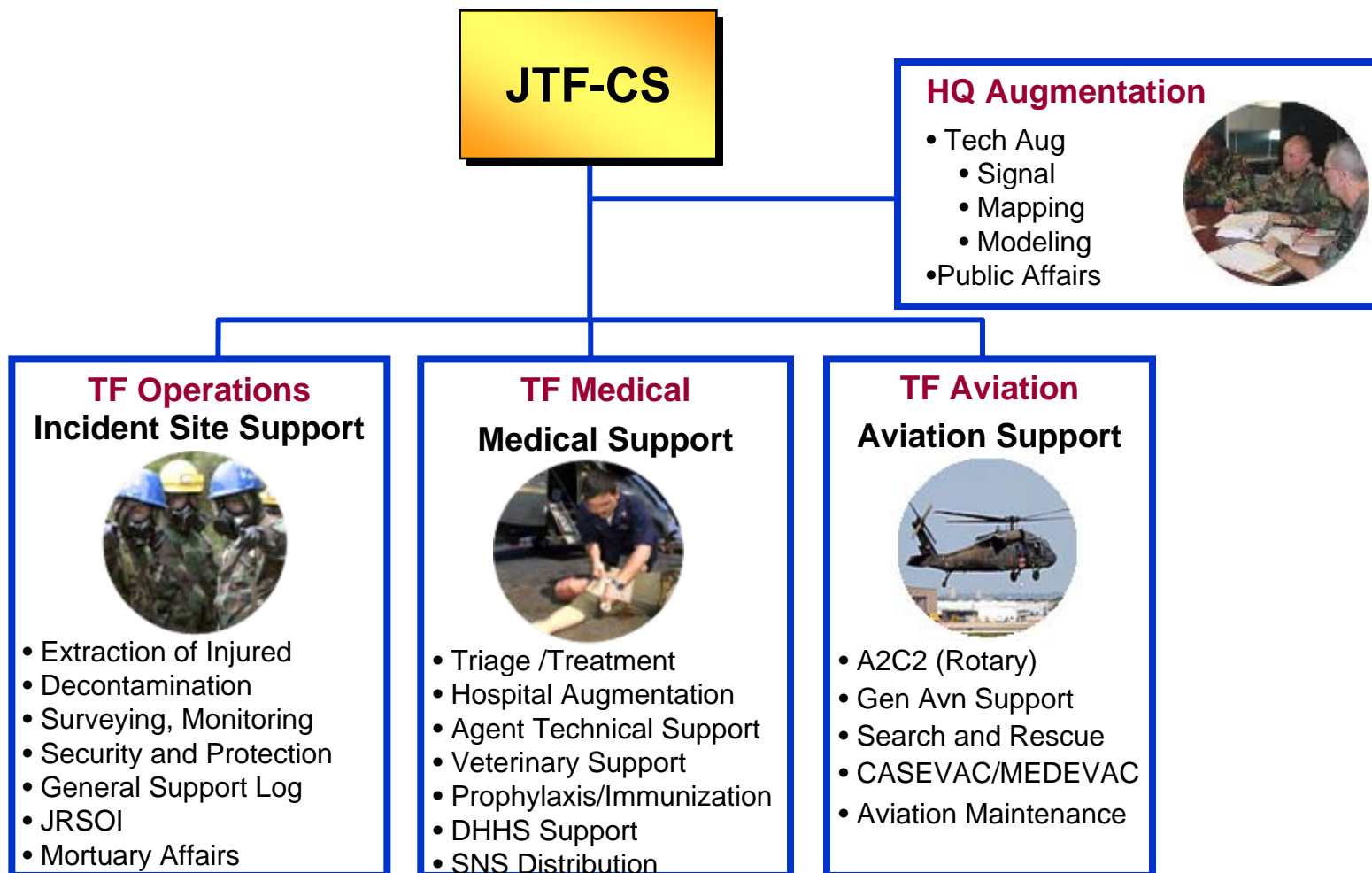
National Incident Management





CBRNE CM Response Force (CCMRF)

JTF-CS provides command and control, and coordination for the following types of tasks and requirements





“...look for ways to continue to **partner** to make the job of the states easier when it comes time to respond within their state...”

General Victor E. Renuart Jr.
Commander
NORAD & USNORTHCOM



Questions?

