



A Proposed Strategy Coordinated Clearance Point of Departure Determination

National Defense Industrial Association
2009 Homeland Security
Symposium & Exhibition

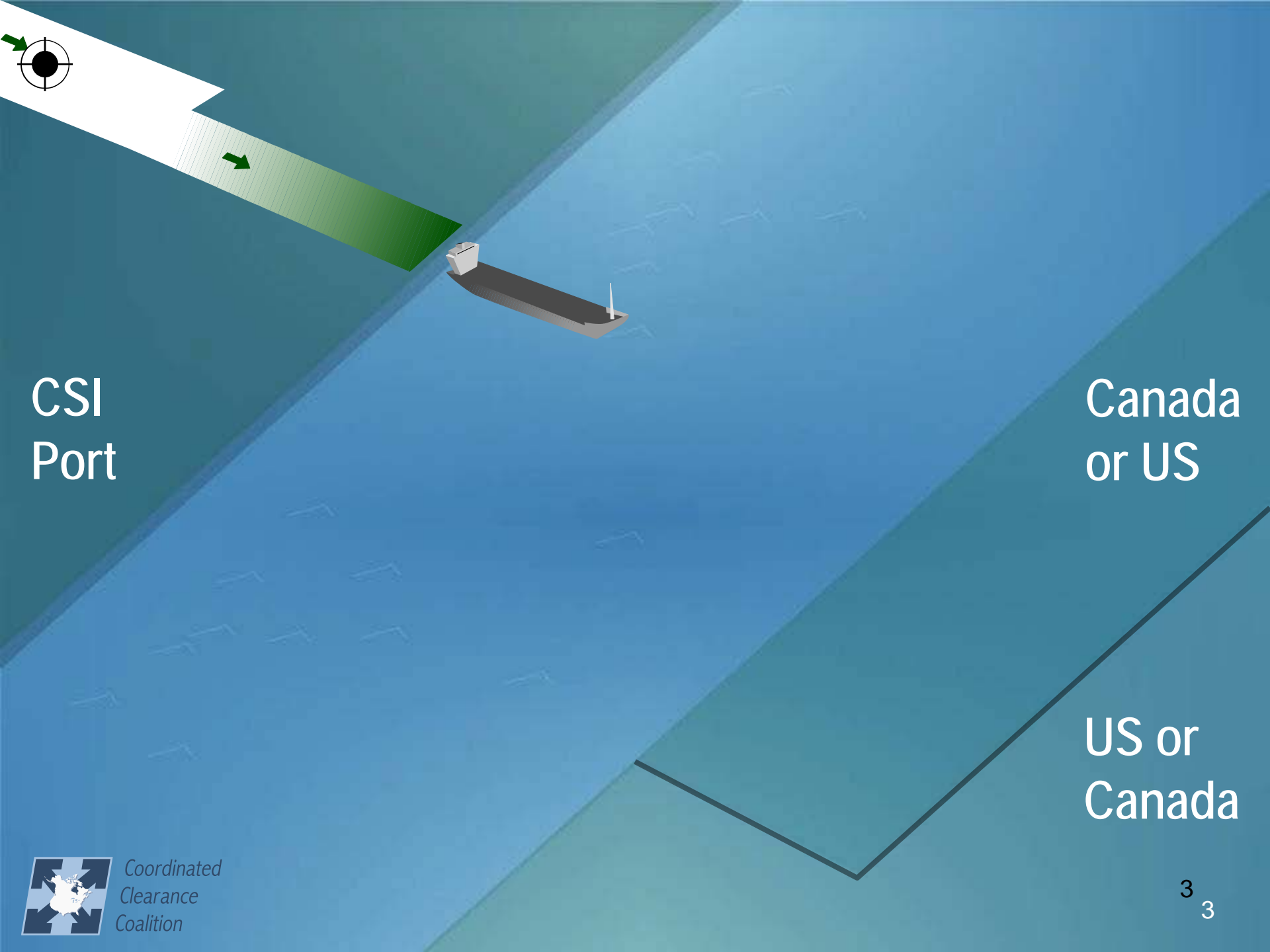
Presented by
Jim Phillips
September 9, 2009



Coordinated Clearance
Point of Departure Determination

Goods Movement Concept

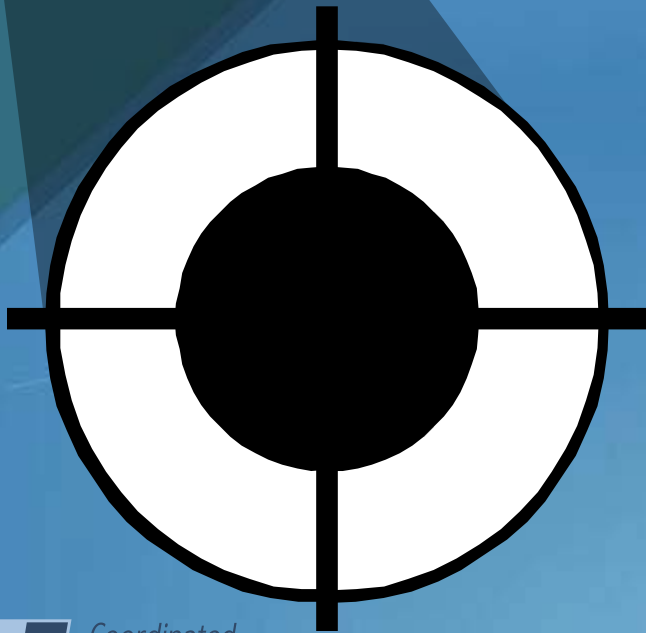




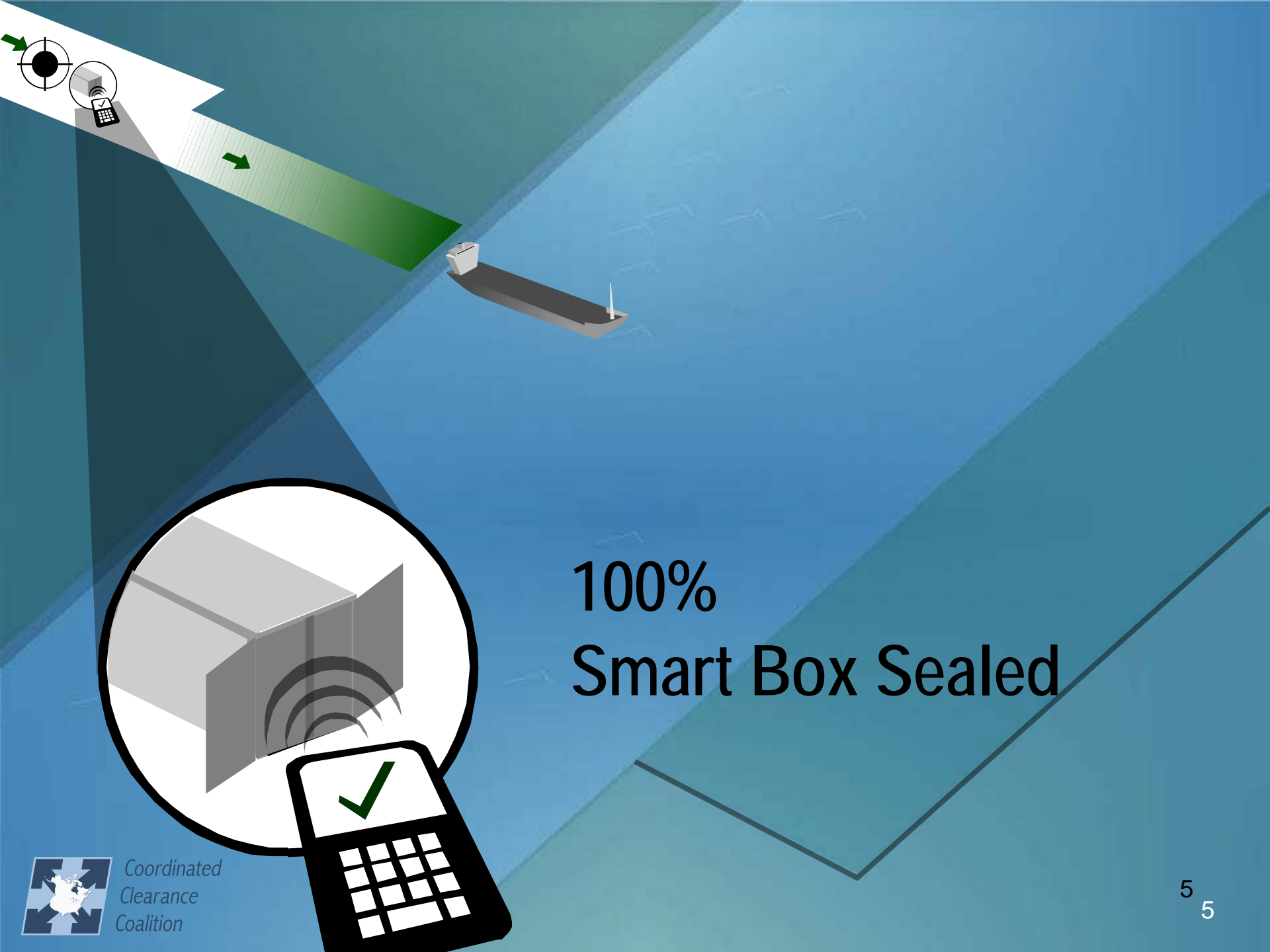
CSI
Port

Canada
or US

US or
Canada



Before Leaving 100%
Full Targeted
& Risk Assessed

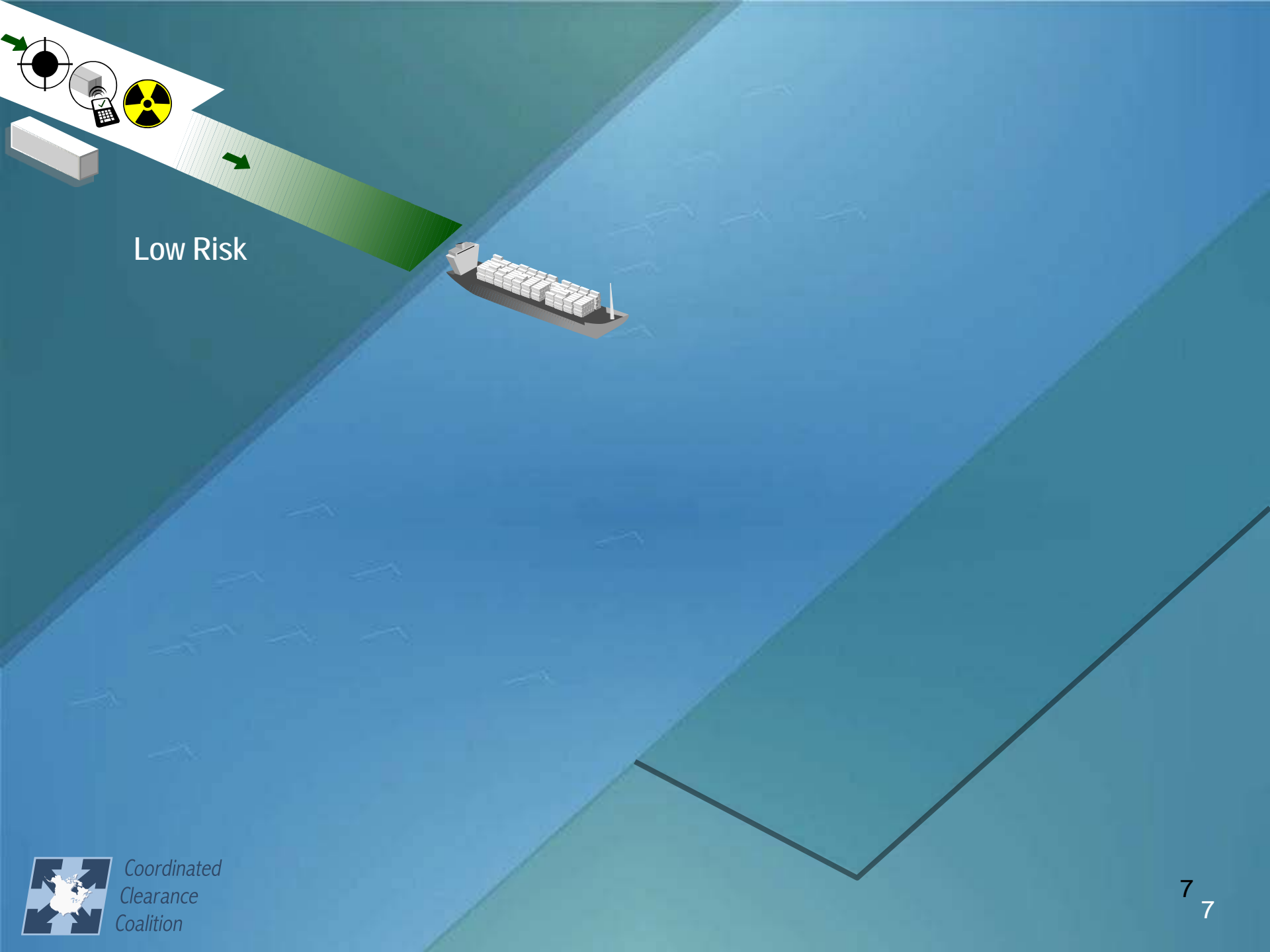


100%
Smart Box Sealed





100% Radioactive Screening

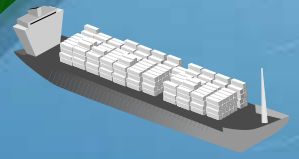
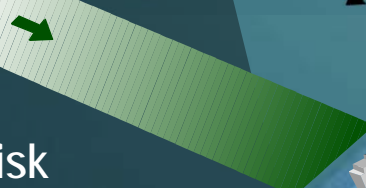


Low Risk

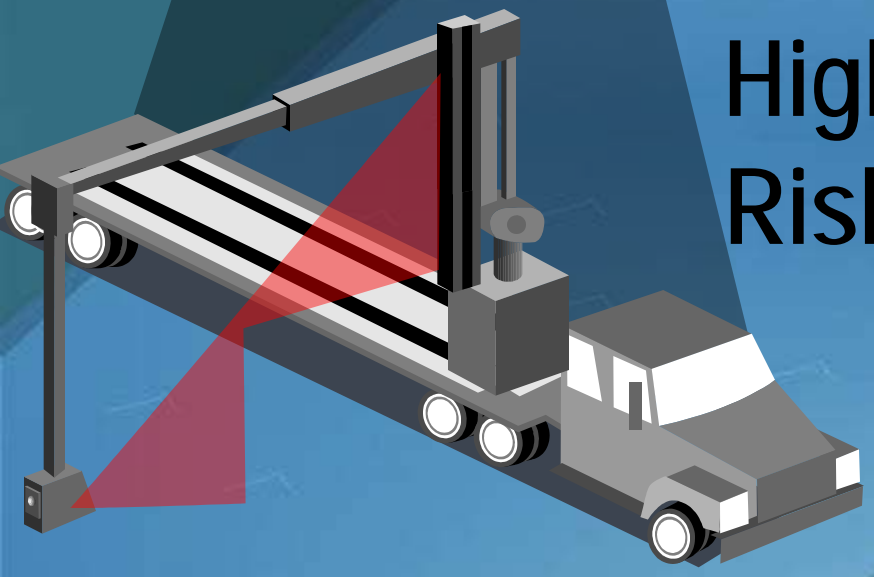
High/Unknown Risk



Low Risk



VACIS for High or Unknown Risk Cargo



High/Unknown Risk

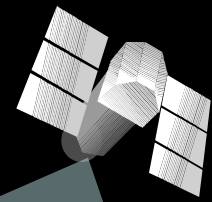
Low Risk

Or Destuff
Container

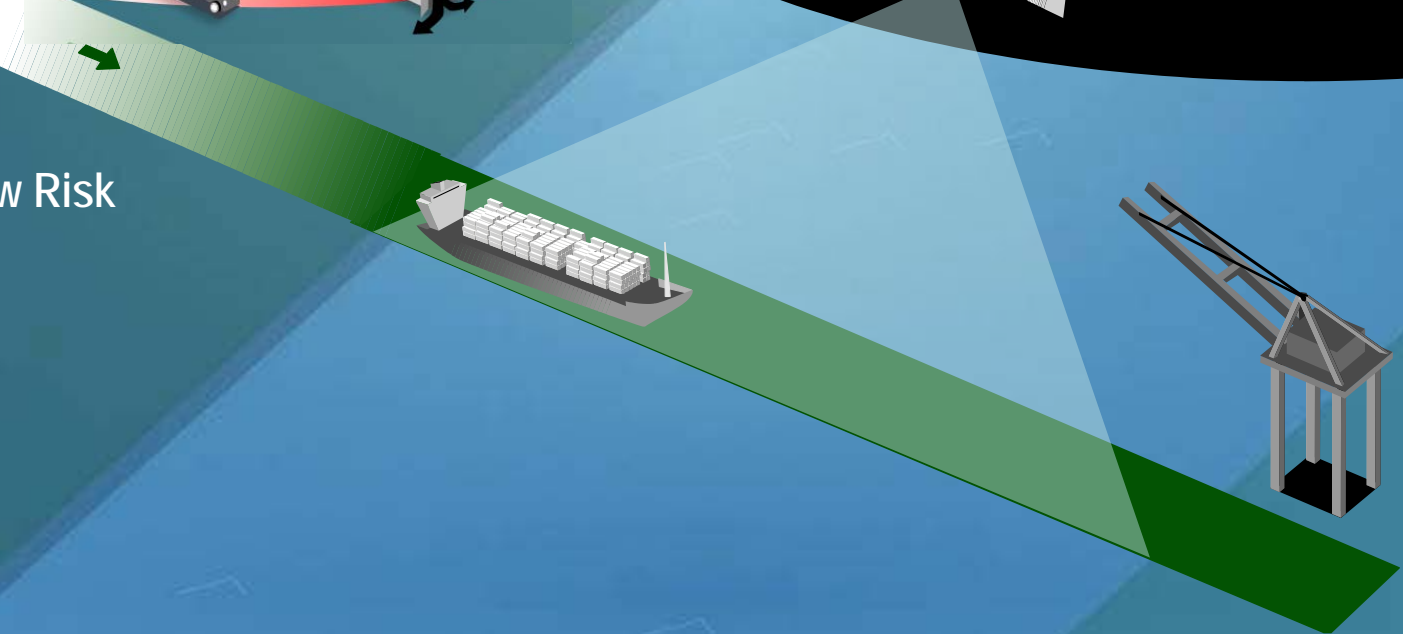
High/Unknown Risk



No Unauthorized Intrusion To Smart Seal



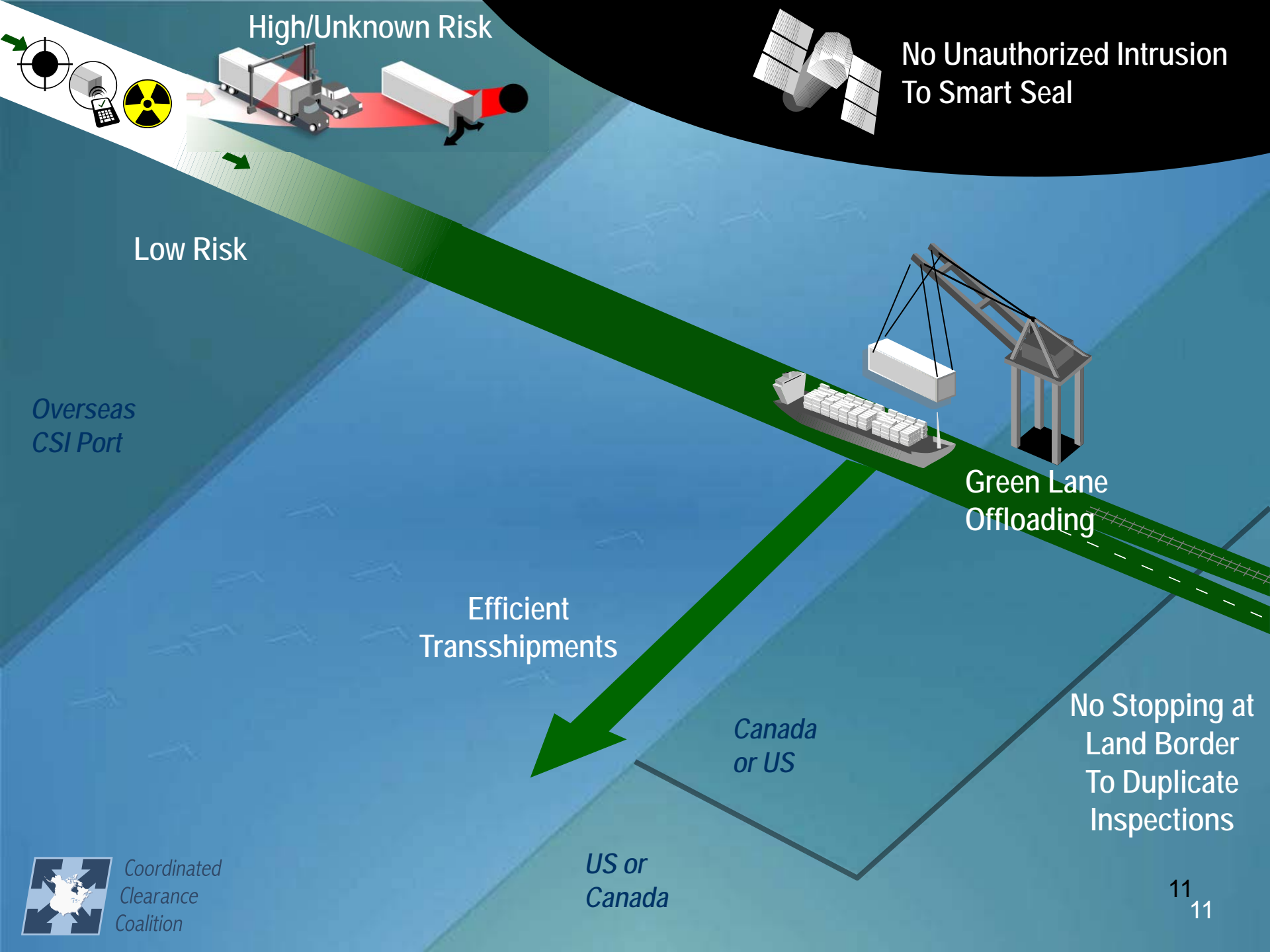
Low Risk



Overseas
CSI Port

Canada
or US

US or
Canada



High/Unknown Risk

No Unauthorized Intrusion
To Smart Seal

Low Risk

Overseas
CSI Port

Green Lane
Offloading

Efficient
Transshipments

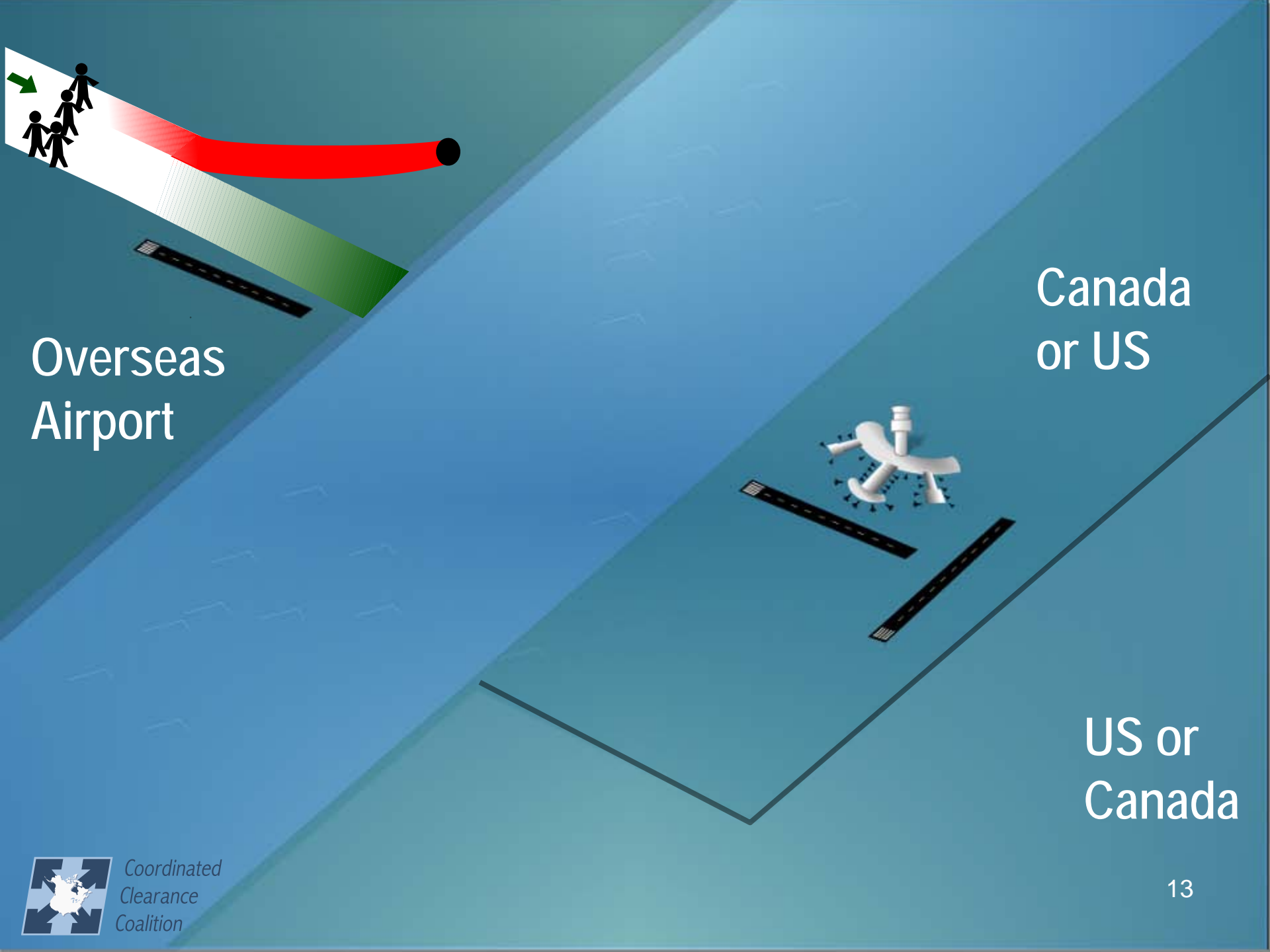
Canada
or US

No Stopping at
Land Border
To Duplicate
Inspections

US or
Canada

Coordinated Clearance
Point of Departure Determination
Passenger Flow Concept





Overseas
Airport

Canada
or US

US or
Canada



100% Screening Biographical Biometric Threats

*Overseas
Airport*



*Canada
or US*

*US or
Canada*





Low Risk

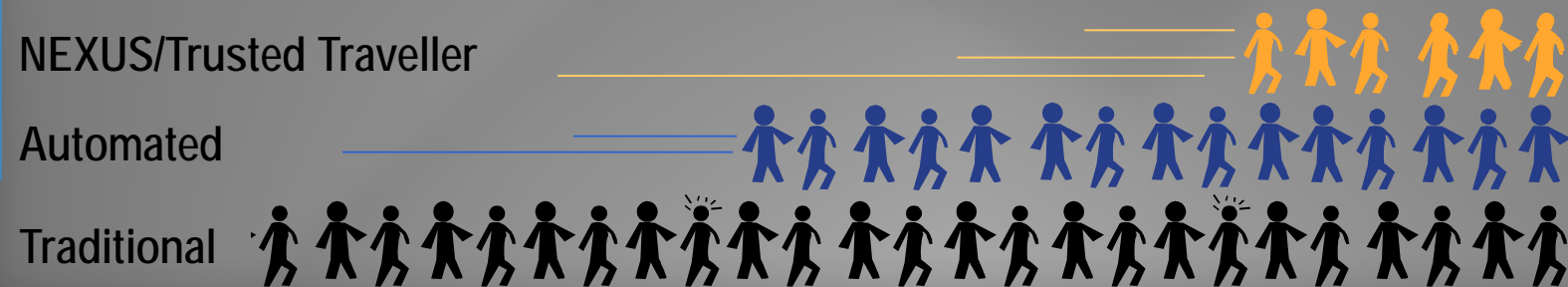
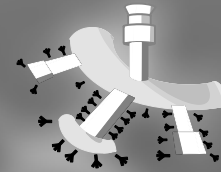
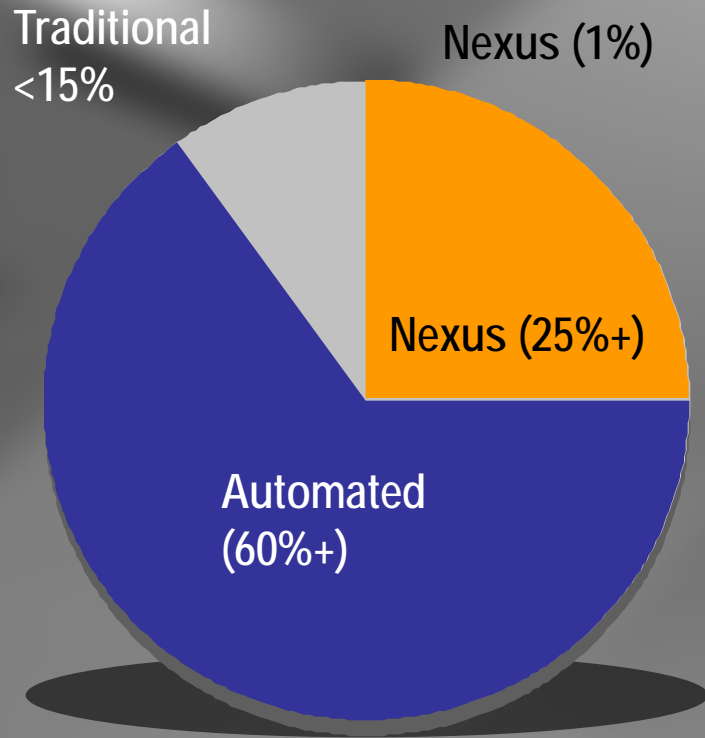
High/Unknown Risk

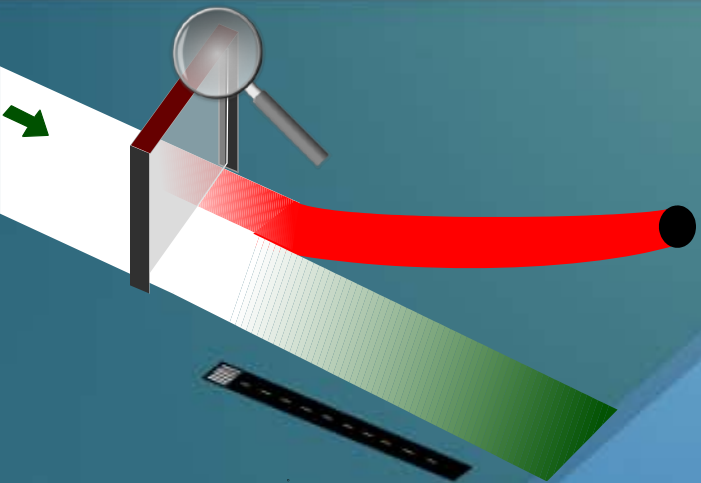
Overseas Airport

Canada or US

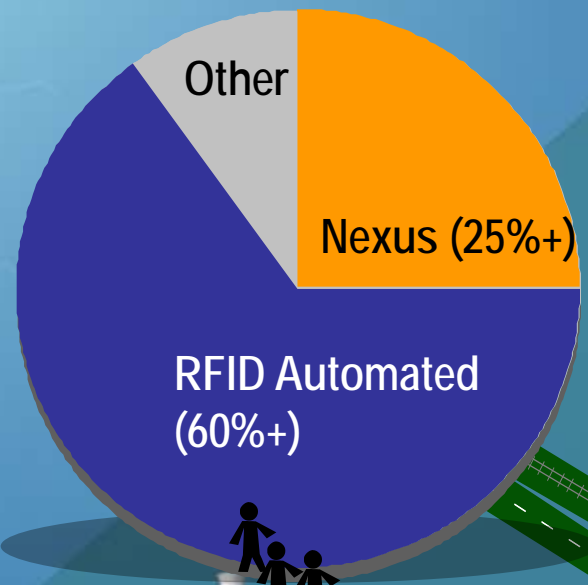
US or Canada

Reinventing the Arrivals Process





Overseas
Airport



Transit by
Ferry/Cruise



Transit by Land



Transit by Air

Canada
or US

US or
Canada

Destination

Overseas
Airport

Canada
or US

US or
Canada



Exit Tracking
Integrated with Airline
Check-in Process



Expedited Process
Fastest Security Screening
Process For Trusted Travelers



Aviation Security
Comparable Processes
Recognized by Both Countries



Biometric ID
At Gate Positive Match for
Boarding Checks



Coordinated Clearance
Point of Departure Determination
Traffic Streaming

Mixed Flows of Vehicles
Approaching Land Border
(as much as 60 miles back)

Streaming by Risk

Truck e-Manifest
Advisory
(Resolution
Before Proceeding)

e-Manifest
(non-FAST)

NEXUS

FAST

RFID Automated

Traditional Passport

Canada
or US

US
or Canada



Coordinated
Clearance
Coalition

20
20

Thank You

For more information:

Jim Phillips
716-754-8824
canambta@aol.com

Gerry Bruno/Solomon Wong
604-717-1800
info@coordinatedclearance.org
www.coordinatedclearance.org