

# Defense Logistics Agency

---



## National Defense Industrial Association

April 8, 2009

VADM Alan Thompson, SC, USN, Director, DLA

---

**Warfighter  
Support**

**Stewardship  
Improvements**

**Business Process  
Refinements**

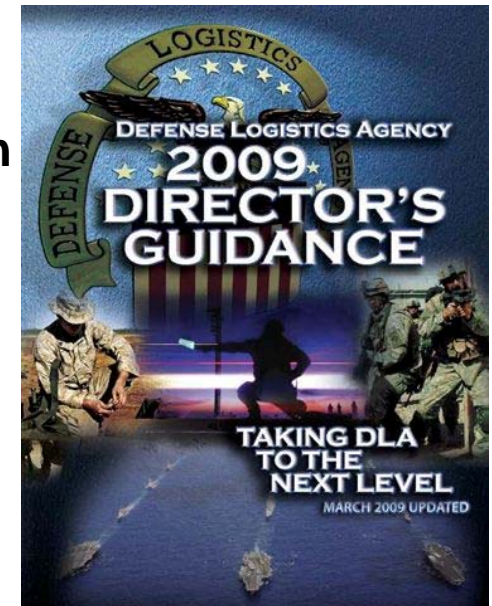
**Workforce  
Development**



# Director's Guidance 2009

## 22 Initiatives Centered on 4 Strategic Focus Areas

- **Warfighter Support Enhancements**
  - Supporting US Forces Increase in Afghanistan
  - Supporting Responsible Drawdown in Iraq
- **Stewardship Improvements**
  - Identifying Prudent Cost Reductions
  - Enterprise Risk Management
- **Business Process Refinements**
  - Assessing EBS Performance and Potential
  - Improving Demand/Supply Planning & Supply Chain Alignment
- **Workforce Development**
  - Enterprise-wide Employee Survey
  - Enhancing Support & Capabilities of Forward Support Personnel





# Warfighter Support Enhancements

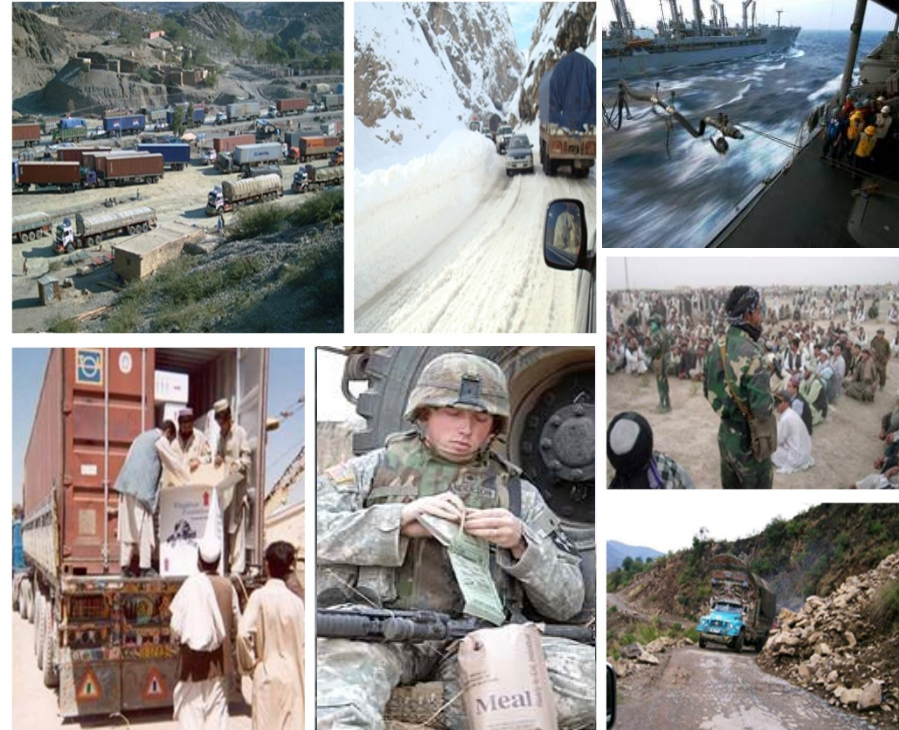
---

- **Supporting US Forces Increase in Afghanistan**
  - **Surging/Prepositioning critical supplies**
  - **Increasing fuel storage capacity**
  - **Scaling distribution capability theater wide**
  - **Establishing an additional DRMO in RC South**
- **Supporting Responsible Drawdown in Iraq**
  - **Embedded in the planning process at all levels**
  - **Pro-actively preparing for disposal requirement surge**
  - **Ready for changes in demand patterns**
  - **Coordinating reset requirements at CONUS depots**



# End to End (E2E) Supply Chain Integration (SCI)

- Leverage existing core competencies (SCI and Acquisition)
- Align new weapon systems support to legacy weapon systems support
- Acquire and integrate where E2E supply chain does not exist
- Align strategic materiel with flexible response when integration services are not required
- Provide “Tailored Logistics Support” ... enabled by BRAC and EBS



*Become National Supply Chain Manager for DoD*



# DLA ... Poised for the Future

---

- **BRAC 2005**
  - **Realigns infrastructure management:**
    - **Consolidates Service DLR Procurement**
    - **Privatizes Commodity Management**
    - **Reconfigures Supply, Storage, and Distribution**
- **Enterprise Business System (EBS)**
  - **DoD's only successfully implemented logistics ERP**
  - **Links warfighter demand with strategic supply partners = asset visibility**
  - **E-Procurement = E2E procurement functionality**



# DLA ... Poised for the Future

---

## Bottom Line:

- Flexible, agile E2E supply chain integrator
- Key logistics partner in the DoD Enterprise
- World-wide presence
- Integrator of Joint Warfighter demand with supply

*Constantly High Performing, Customer Focused, Globally Responsive ...*