



Your complimentary  
use period has ended.  
Thank you for using  
PDF Complete.

[Click Here to upgrade to  
Unlimited Pages and Expanded Features](#)



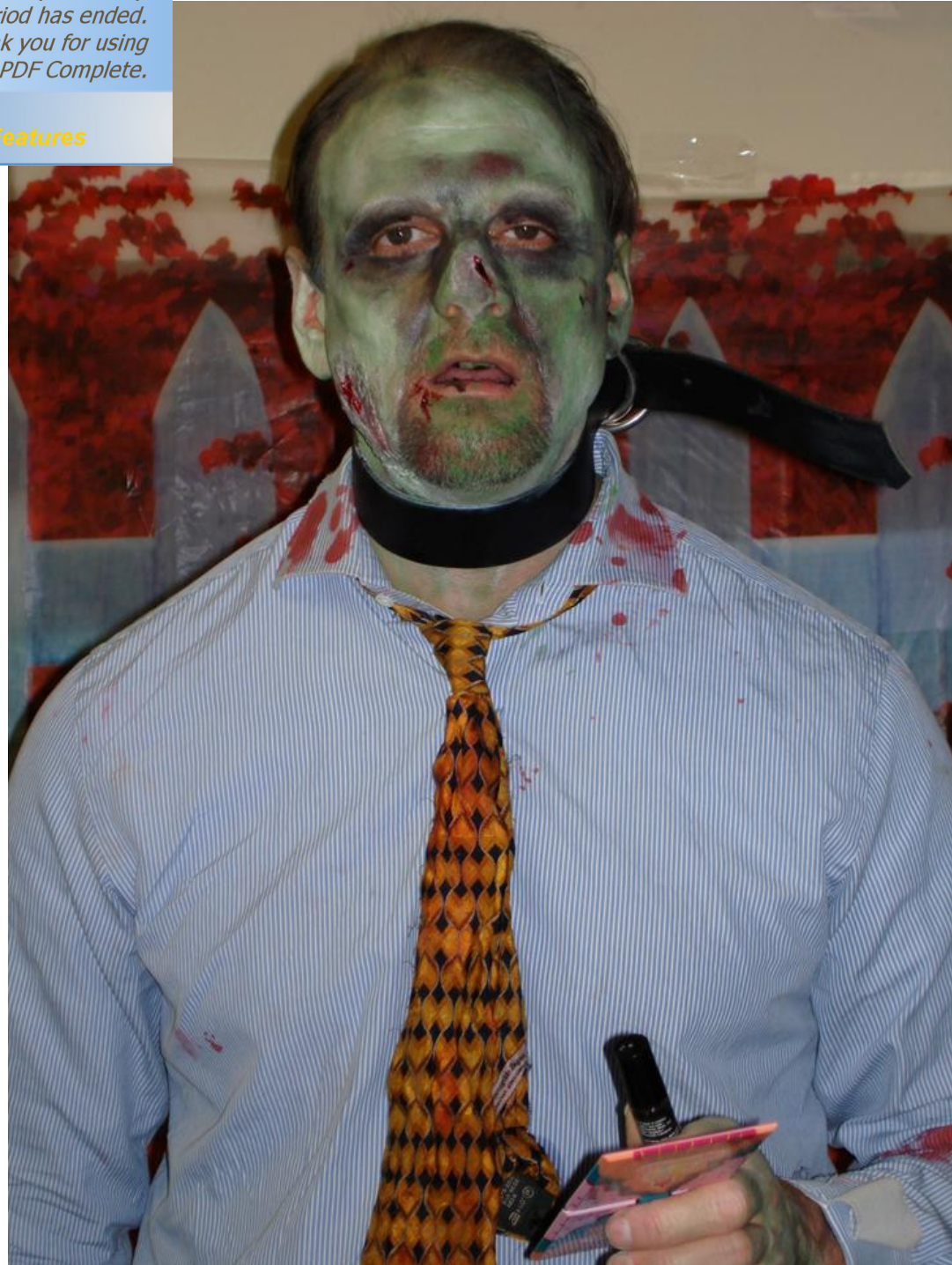
# TARGET MANAGEMENT INITIATIVE

## Office of the Secretary of Defense - Director Operational Test & Evaluation: Target Investments

Josh Messner - DOT&E TMI Execution Manager

*‘We’re with OSD...  
we’re here to help!’*

47<sup>th</sup> Annual  
Targets, UAVs &  
Range Operations Symposium  
Savannah, GA  
October 21-23, 2009





# Outline



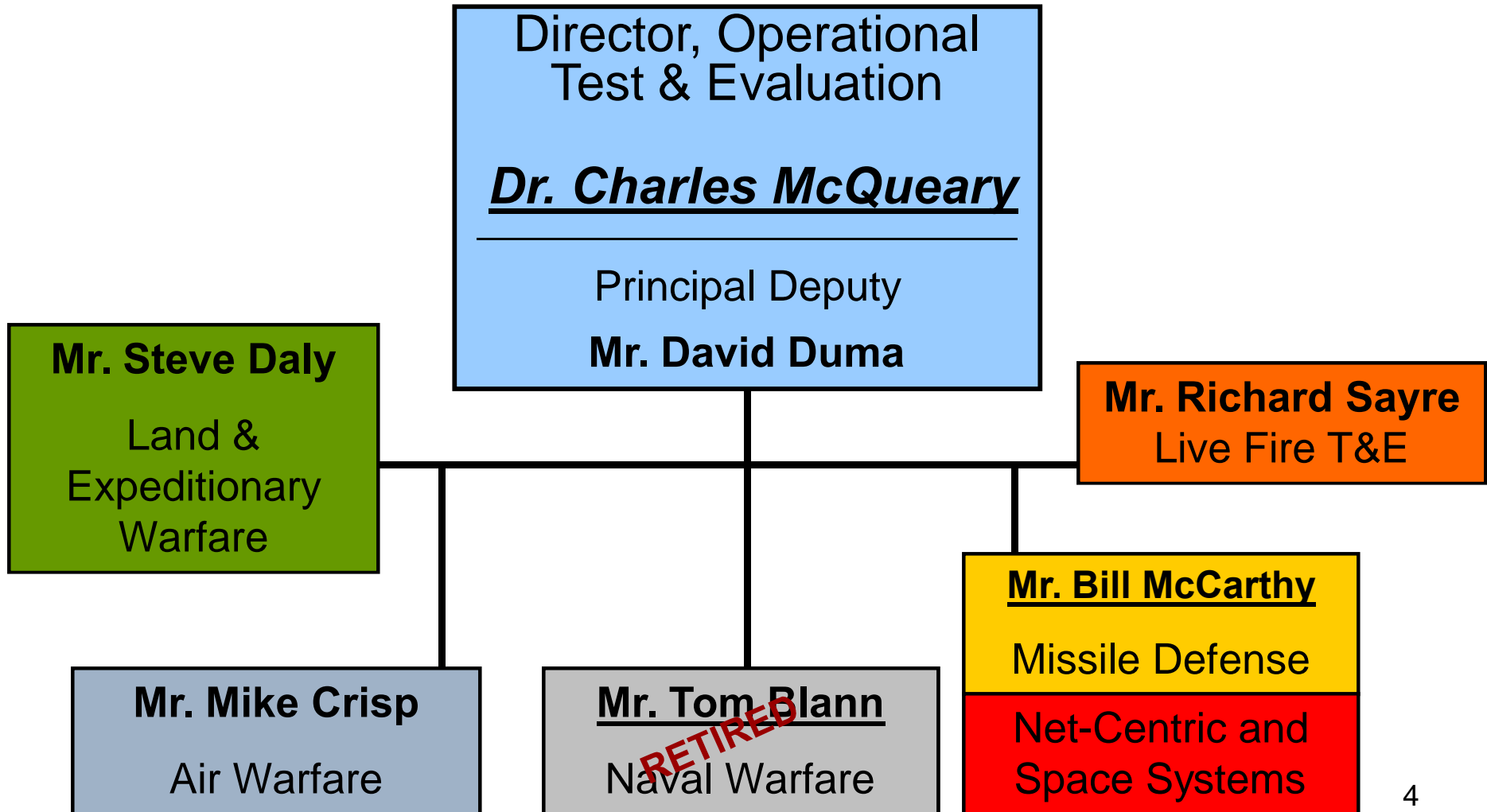
- ” Changes at DOT&E
- ” Supporting DOT&E's Mission
- ” Target Management Initiative
- ” Submitting Proposals
- ” FY09 Recap
- ” FY10 Program
- ” FY11 Focus Areas

## DOT&E's Target Resources Staff:

- ” Dennis Mischel: TMI Program Manager / Targets Lead
- ” Pat Burris: 5<sup>th</sup> Gen. FSAT Project Manager / Aerial Targets
- ” James Maybury: Target Control Systems / C<sup>2</sup> Interfaces
- ” Josh Messner: TMI Execution Manager / Mobile Ground Targets



# Changes at DOT&E





# Changes at DOT&E



## Dr. J. Michael Gilmore . Director, Operational Test & Evaluation

- . Sworn in on 9/23/2009
- . Formerly the Assistant Director for National Security at the Congressional Budget Office (CBO) and Deputy Director of General Purpose Programs within Program Analysis and Evaluation (PA&E)
- . B.S. in Physics from M.I.T.
- . M.S. and Ph.D in Nuclear Engineering from University of Wisconsin



# Supporting DOT&E's Mission



<http://www.dote.osd.mil/about.html>

The Director, Operational Test & Evaluation (DOT&E) is making **budgetary and financial recommendations to the SecDef regarding OT&E; and oversight to ensure OT&E for major DoD acquisition programs is adequate to confirm operational effectiveness and suitability of the defense system in combat use.**

Targets Staff supports DOT&E by:

- “ Annual monitoring of Services targets budgets for potential impacts to OT&E
- “ Make Investments that:
  - . Help to ensure Targets are Threat Representative and Cost Effective
  - . Help promote interoperability between Services and Ranges
  - . Help to ensure Target Systems (C<sup>2</sup>, Scoring, Launch) are adequate to support Testing



# DOT&E\$ Target Management Initiative



## Objective

- “ Improve threat realism, increase interoperability, and reduce test costs.

## Projects

- “ TMI projects include ***studies, standards developments, target system prototypes, and proof of concept demonstrations.***

## Selection

- “ Supported by Target Investment Working Group (TIWG)
- “ Criteria Include: Importance to Operational Testing, Improvement to the Threat Realism, Benefit vs. Cost, Multi-Program Applicability, Potential for Successful Execution
- “ DOT&E Deputies are briefed on prioritized project list

## Execution

- “ Projects are typically 1-3 years in length
- “ \$50K Studies to \$3M Prototypes
- “ Project Execution is Managed by the Services
- “ Minimum deliverables include: Monthly reporting, Bi-annual briefings, Final Report

**Prime consideration is given to projects that address Operational Testing (OT) requirements and DOT&E resource concerns.**



Your complimentary  
use period has ended.  
Thank you for using  
PDF Complete.

[Click Here to upgrade to  
Unlimited Pages and Expanded Features](#)



# Annual Upcoming Dates



- ” **16 November** . Release Call for Proposals & FY11 Focus Areas
  - ” Initial proposal format will be 1 page white paper
- ” **21 December** . White paper proposals due
- ” **08 January** . DOT&E releases response to white papers and detailed proposals are requested.
- ” **05 February** . Detailed proposals due.
- ” **12 February** . TMI sends detailed questions to proposal authors.
- ” **Early March** . New Start Reviews





*Your complimentary  
use period has ended.  
Thank you for using  
PDF Complete.*

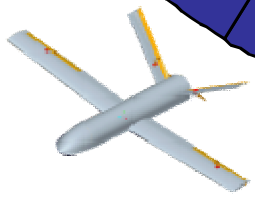
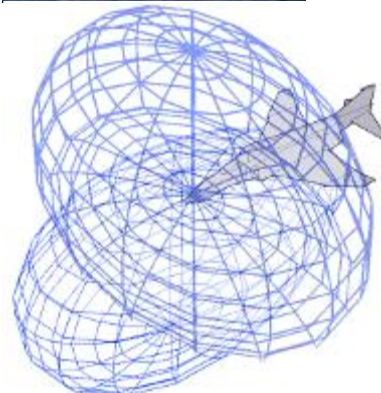
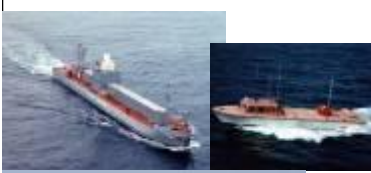
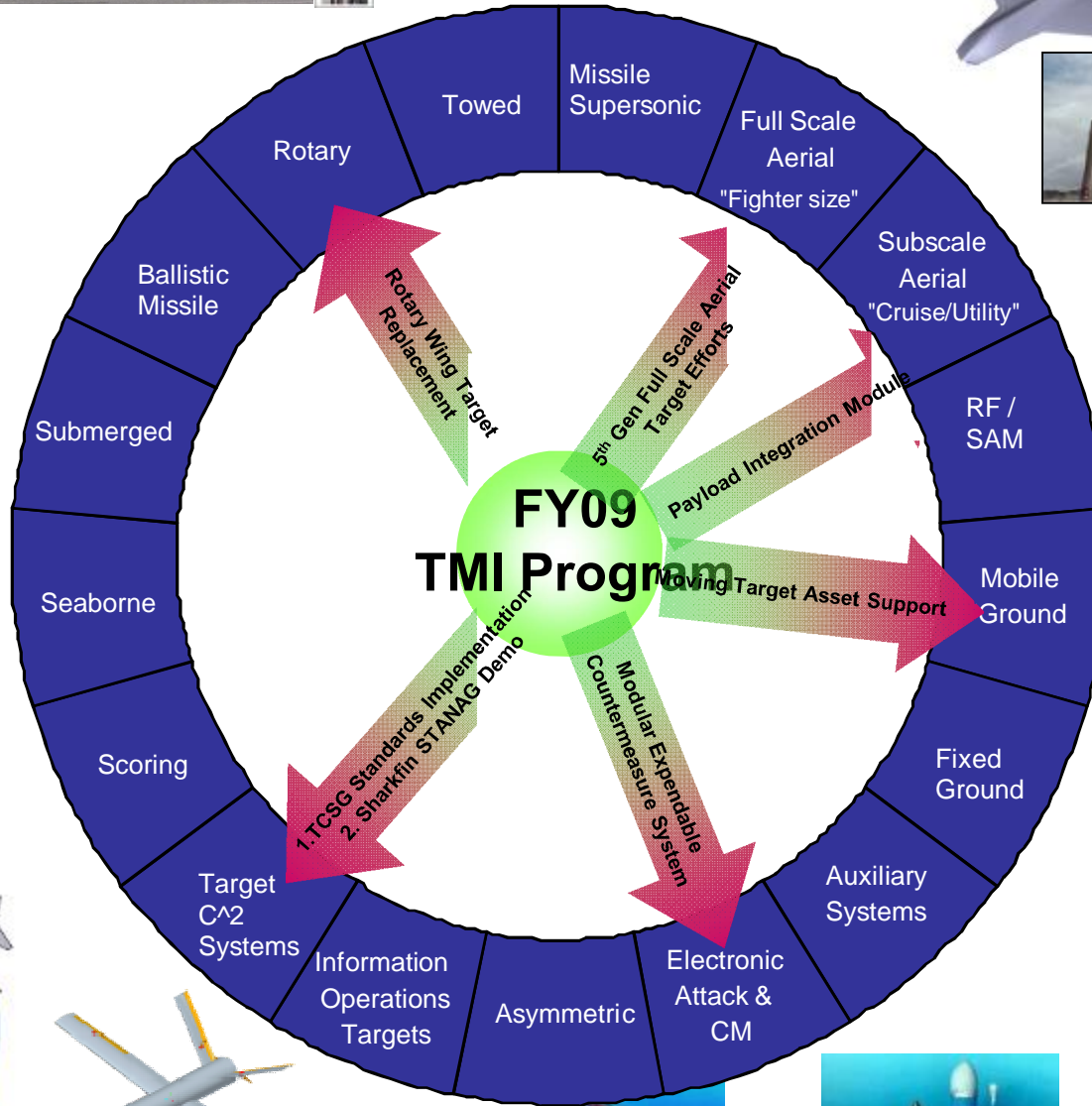
[Click Here to upgrade to  
Unlimited Pages and Expanded Features](#)



# Submitting Proposals

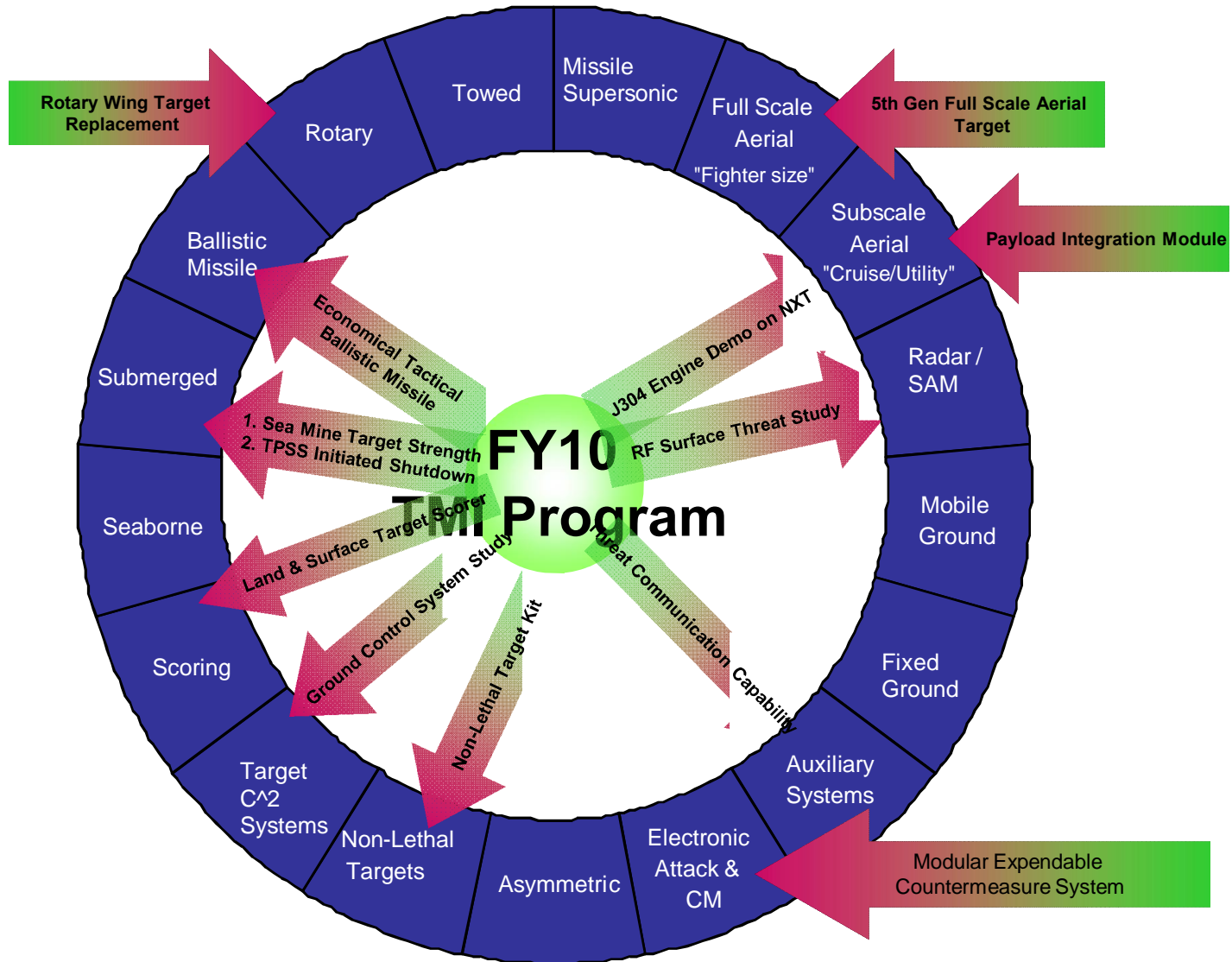


- “ Project proposals can be submitted via the TMI website: [www.tmi.osd.mil](http://www.tmi.osd.mil)
- “ We recommend industry and academia work with Service partners when submitting proposals.
- “ Please follow-up submittals with a call to 703-681-5502





# FY10 TMI Program





# 11 Focus Areas



ity



**Have an Explosive Year!**