



Port Safety & Security Technologies



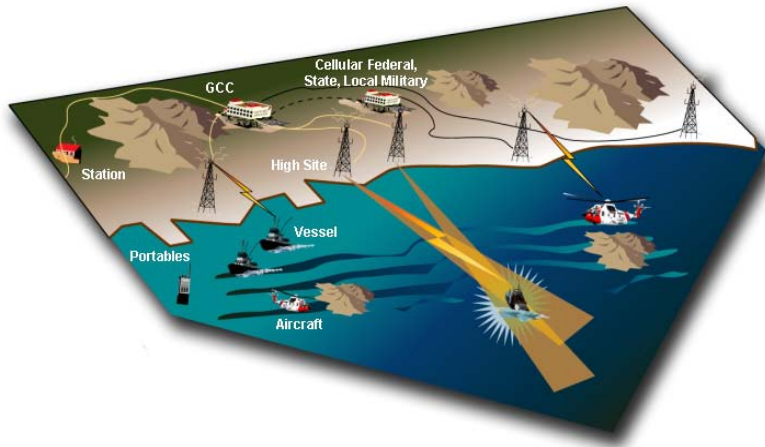
September 14-16, 2010
Baltimore, Maryland





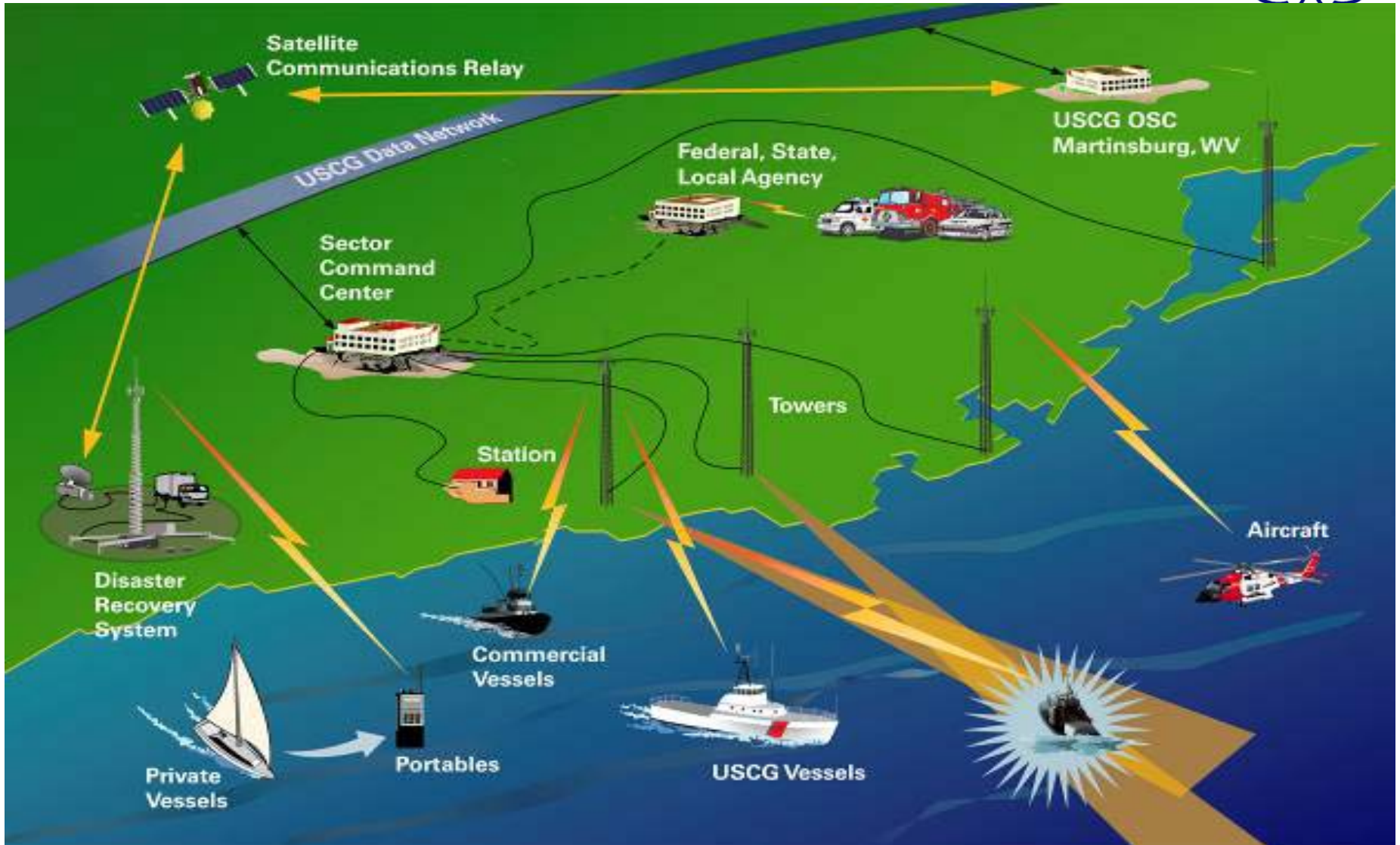
Summary

- **Rescue 21**
- **Homeport**
- **Interagency Operations Centers**



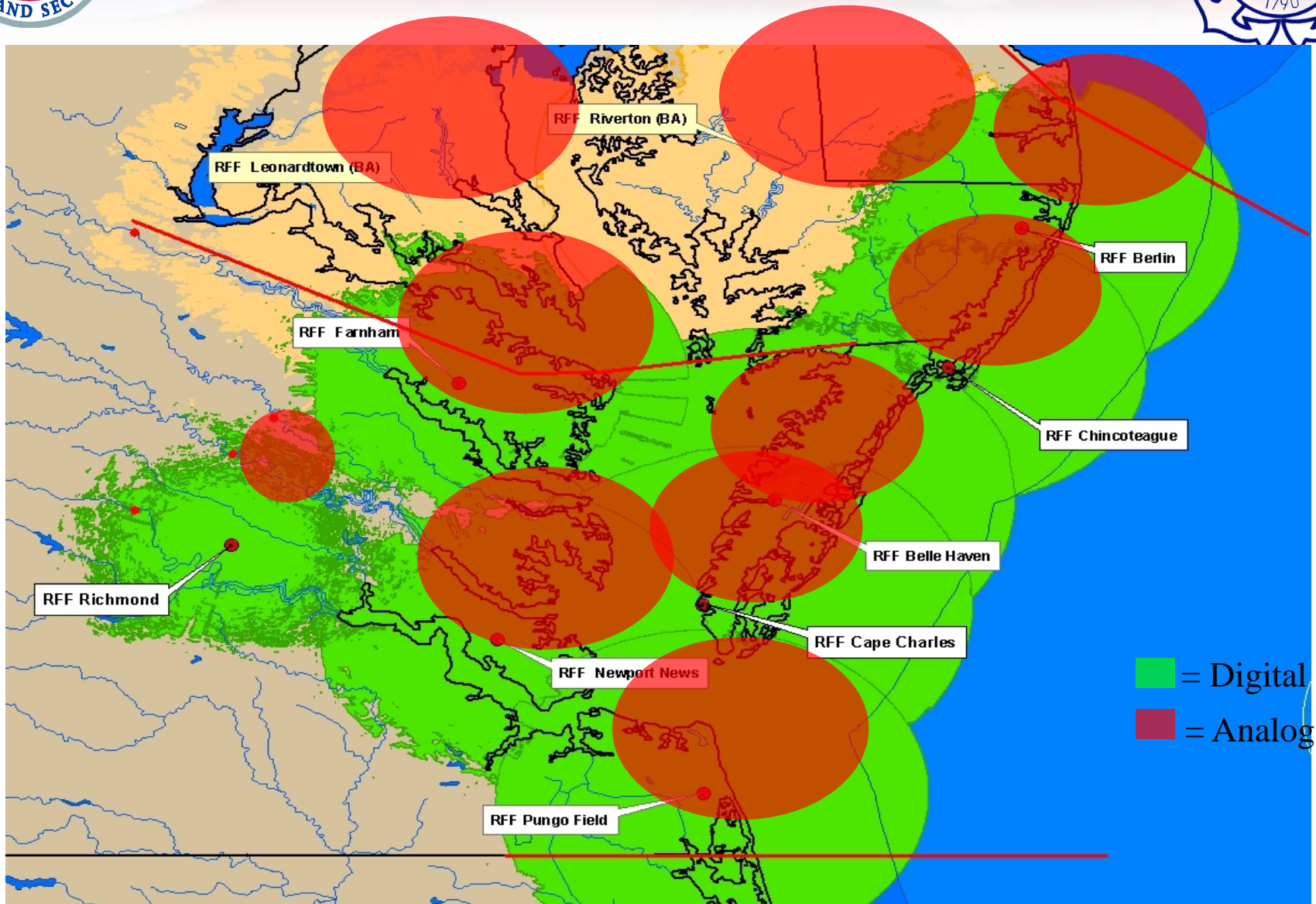


Rescue 21





Digital vs Analogy



■ = Digital
■ = Analog



R21 Nationwide Coverage





HOMEPORT

U.S. Department of Homeland Security
UNITED STATES COAST GUARD



Missions **Port Directory** Library

Port Directory



SECTOR BALTIMORE (05-37060)
2401 HAWKINS POINT RD
BALTIMORE, MD 21226
Primary Phone: (410) 576-2561
Emergency Phone: (410) 576-2693
Fax Number: (410) 576-2575
Rescue 21 VHF DSC MMSI Number: 003669961
URL: <http://www.uscg.mil/d5/sectBaltimore/>
Quick Link <http://homeport.uscg.mil/baltimore>
[Contact Us](#)

Select Coast Guard Unit:



<http://homeport.uscg.mil>

National Response Center Number: 800-424-8802 - Contact the NRC for oil spills, hazmat releases, and America's Waterway Watch.

News and Events

News and Events

- [Port Wide Industry Day 2008](#)
- [Small Passenger Vessel Industry Day 2008](#)

Port Conditions

Coast Guard Prevention

Commercial Fishing

- [Commercial Fishing Safety Equipment Requirements](#)
- [Contact Information](#)

Container Inspections

- [Contact Information](#)
- [Freight and Tank Container Inspection Checklist](#)
- [International Convention for Safe Containers \(CSC\) Circular 134](#)

Domestic Vessel Inspection

- [Port Security Advisory \(8-09\)](#)
- [Port Security Advisory \(9-09\)](#)
- [MARITIME SAFETY & SECURITY BULLETIN 35-09](#)
- [Contact Information](#)
- [Small Passenger Vessel Annual Check List](#)

[more...](#)

Drug And Alcohol Program

- [Drug and Alcohol Program Inspection Guidelines and Checklist](#)

Facility Inspections

- [MARITIME SAFETY & SECURITY BULLETIN 30-10](#)
- [MARITIME SAFETY & SECURITY BULLETIN 31-10](#)
- [2010 Port Wide Industry Day Agenda](#)
- [Contact information](#)
- [MARITIME SAFETY & SECURITY BULLETIN 08-10](#)

[more...](#)

COTP MARSEC Level

COTP MARSEC Level



COTP Baltimore is presently at MARSEC Level 1. 9 Oct 08.

Port Status Information

Port Status Information

BALTIMORE Port Status Information

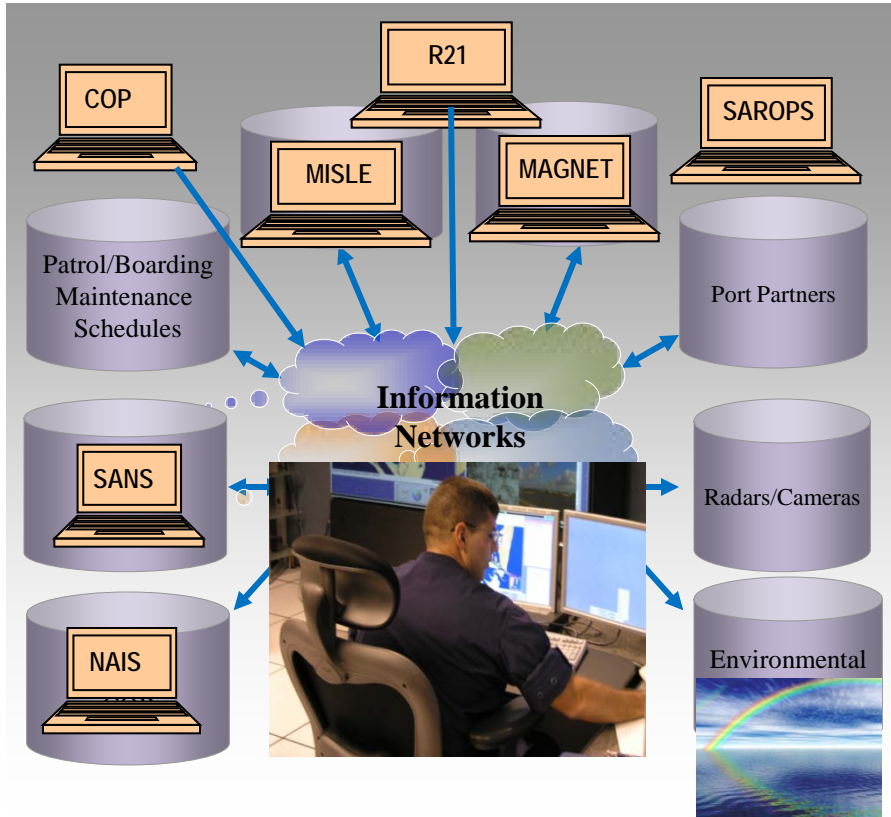
Port	Status	Comments	Last Changed
ALEXANDRIA	OPEN		09/01/2010
ANNAPOLIS	OPEN		05/17/2010
BALTIMORE	OPEN		05/17/2010
CAMBRIDGE	OPEN		05/17/2010
CHES/DEL CANAL WEST	OPEN		05/17/2010
CHESAPEAKE BEACH	OPEN		05/17/2010
CHESAPEAKE CITY	OPEN		05/17/2010
CHESTERTOWN	OPEN		05/17/2010
COVE POINT	OPEN		05/17/2010

Safety and Security

Area Contingency Plan



Command & Control



Today

Operator is the Integrator



WatchKeeper

- Capabilities will be developed/deployed in 3 segments:
 - Segment 1 – Information Management (Watchkeeper)
 - Segment 2 – Sensor Management
 - Segment 3 - Facilities
- Watchkeeper developed in 6 “spirals” of capability

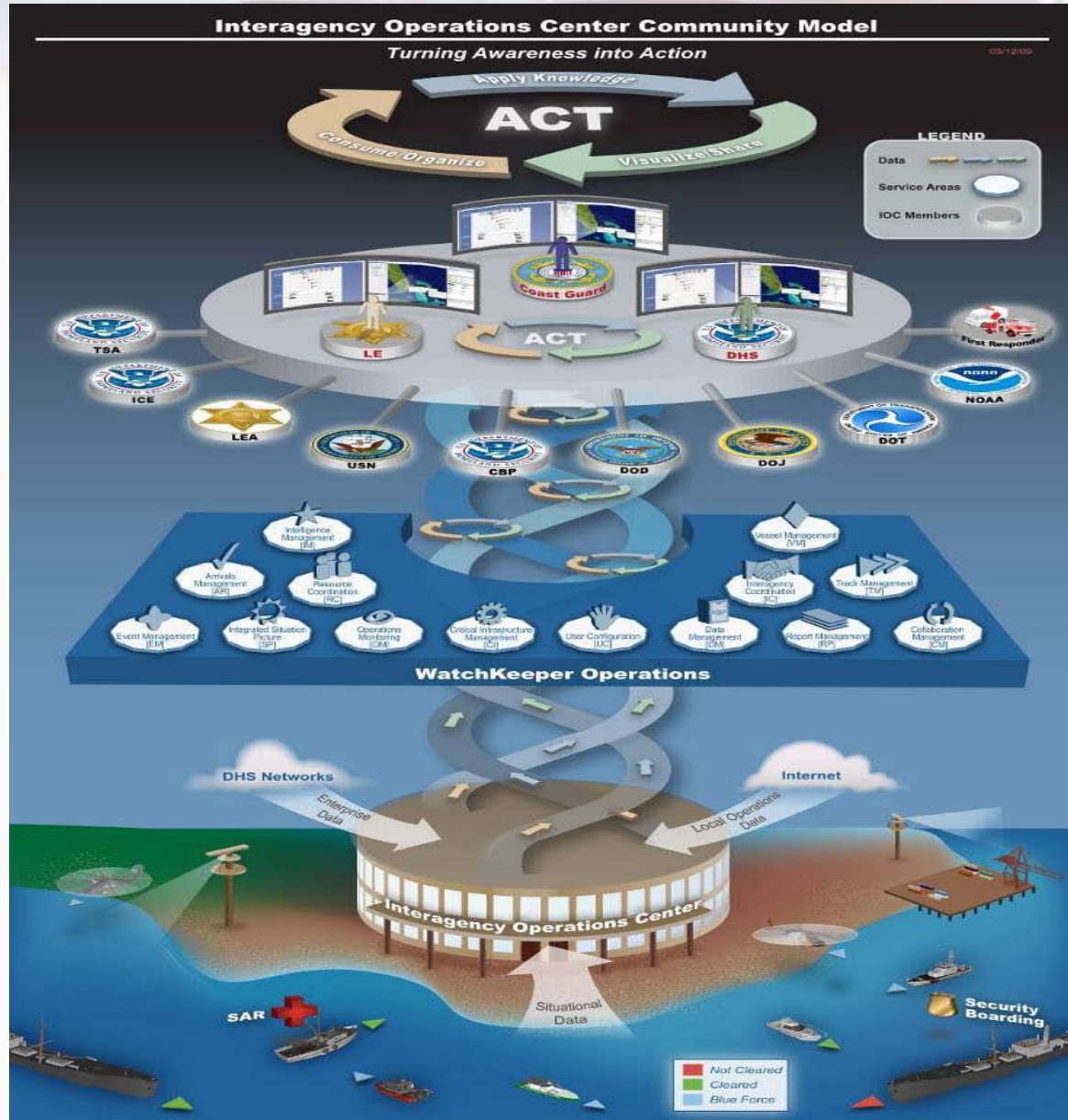


Tomorrow

Operator is the Evaluator



Interagency Ops Centers

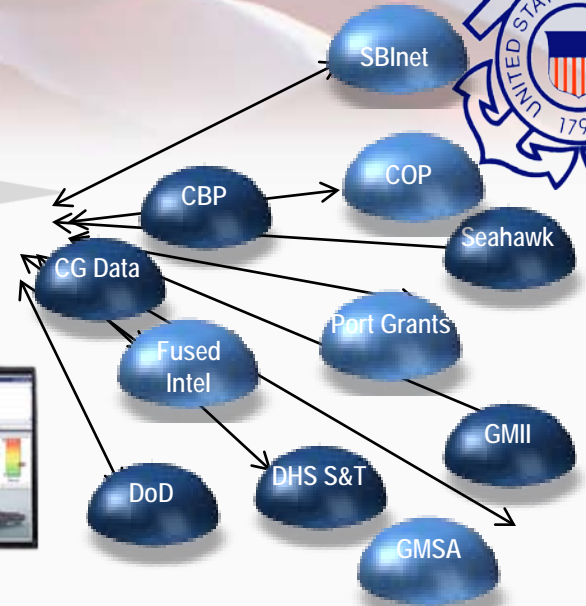
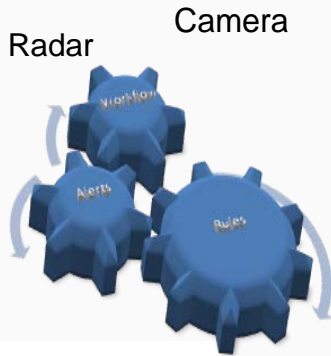




Concept



Link Information with Operations



Consume Data

- **Integrated IT Systems** – USCG and Interagency; i.e. MAGNet (SANS, MISLE, CWSS (NOAA, DoD, CBP, IRVMC, LRIT)
- **Sensors** (R21, NAIS, Radar, Cameras, Rad/Chem/Bio Hazard)
- **External Data** (Port Partners; Weather)
- **Capture Watch Events**

Organize

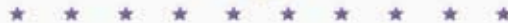
- **Arrange** All Information in Context of the Users
- **Reuse** this Context Throughout IOCs
- **Single Entry** Data Point

Apply

- **Business Rules**, Workflow, and Planning Inputs
- **Anomaly Detection** Alerts
- **Decision Support** and Knowledge Management
- **Analyze and Monitor** Vessel Behavior

Share and Act

- **Actionable** Situation Awareness
- **Issue** and Monitor Tasking
- **Publish** Selected Info to Port Partners
- **Coordinate** Inter-Agency Operations
- **Automated Briefings**, Notifications, Logs, Reports



IOC Charleston

MARSEC: 1

FPCON: ALPHA

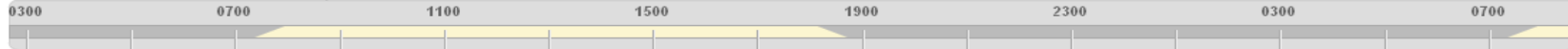
HURCON: IV

PORTCON: W-72

Tue Dec 1 2009

0844

12/02/2009



Weather
Updated 0 minutes ago

 Temp: 56 °F Wind: 13 kts	 Temp: 61 °F Wind: 10 kts	 Temp: 60 °F Wind: 9 kts	 Temp: 59 °F Wind: 9 kts	 Temp: 57 °F Wind: 10 kts	 Temp: 60 °F Wind: 12 kts	 Temp: 62 °F Wind: 13 kts	 Temp: 62 °F Wind: 16 kts
---------------------------------	---------------------------------	--------------------------------	--------------------------------	---------------------------------	---------------------------------	---------------------------------	---------------------------------

Arrivals COTP Charleston
Updated 0 minutes ago

	MAJESTIC MAERSK	FREEDOM		MSC SCANDINAVIA		INDAMEX CAUVE SUNSHINE MAI
--	-----------------	---------	--	-----------------	--	----------------------------------

Arrivals COTP Savannah
Updated 0 minutes ago

APL AGATE	HANJIN MONACO INDAMEX CAUVERY HYUNDAI GOODWILL	ATLANTIC SUPERIOR	SPRUCE GALAXY SEABULK AMERICA SHIMA	ZIM QINGDAO	FREJA DANIA BELUGA FORESIGHT HAMBURG GOAL	HAMBURG GOAL	CONRAD S
-----------	--	-------------------	---	-------------	---	--------------	----------

Event swimlanes coming soon

Normal ▾

WatchKeeper "State of the IOC" provides an executive level summary of port activities (36 hr window)

Arrivals

Vessel Summary 96 Hour Vessel Digest
WatchKeeper Dashboard: Arrivals Dashboard

My Tasks

Task	Created	Due
Vessel Arrival Terminal Not Found	02/04/2008	
Vessel Arrival Analysis, Vessel: YM MILANO, IMO: 8707355	04/12/2007	
E-2008 Harborfest Air Show has changed	04/21/2008	
Vessel Arrival Terminal Not Found	05/07/2007	
Unified Command Tasking	12/16/2005	

1-5 of 7727 more

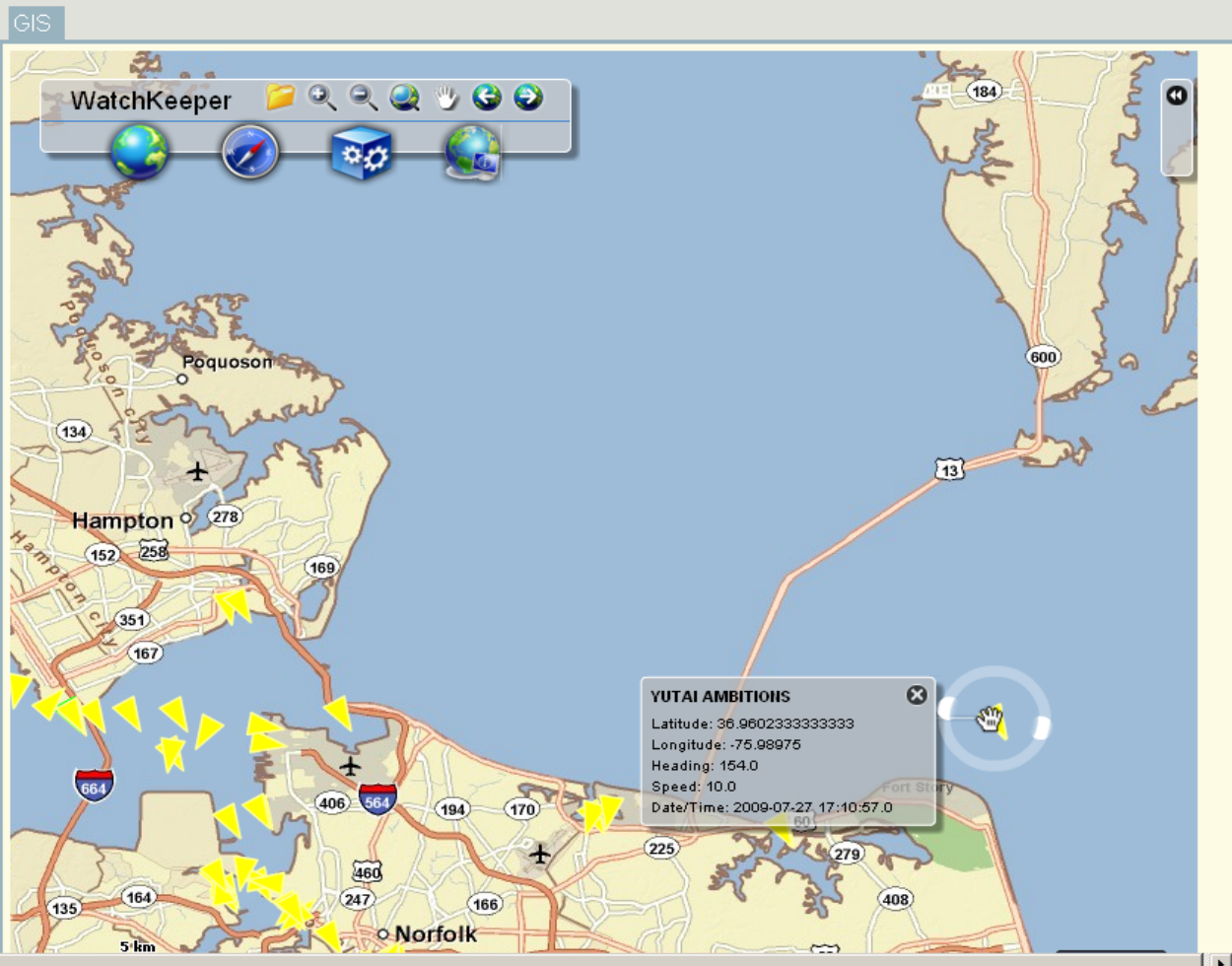
Arrivals

Vessel Name	Arrival Date		
ZIM SHANGHAI	08/07/2009	cab	●
MSC ROSSELLA	08/04/2009		◆
CSCL MONTEVIDEO	08/03/2009		◆
HANJIN PORTLAND	08/02/2009	cab	●
PAN AMBITION	08/02/2009	CAB	◆
SAGA TUCANO	08/02/2009	CAB	◆
NOMAD	08/02/2009	cab	●
Triton Highway	08/01/2009	cab	●
Dresden Express	08/01/2009	CAB	◆
CMA CGM GEORGIA	08/01/2009		◆
MSC DALTON	08/01/2009	cab	●
Martret Provence	08/01/2009	CAB	◆
Alliance New York	08/01/2009		◆
MSC Uganda	08/01/2009	cab	●
Cape Brasilia	07/31/2009	cab	●
EVER DELIGHT	07/31/2009	cab	●
MSC SOCOTRA	07/31/2009	cab	●
EVER RESULT	07/31/2009	CAB	◆
HS BIZET	07/31/2009	CAB	◆

1-19 of 100 more

Bookmarks Edit

- Quick Response Cards



WatchKeeper Portal and Geographic Display



Summary

- **Rescue 21 is enhancing maritime safety & security throughout majority of continental U.S.**
- **Homeport is “one stop shop” for maritime safety & security information**
- **Interagency Ops Centers provides enhanced opportunity for information sharing in Maritime Domain**





Questions?

