

SOUTHCOM Haiti Reflections

THE OVERALL CLASSIFICATION OF THIS BRIEF IS UNCLASSIFIED



UNITED STATES SOUTHERN COMMAND
P A R T N E R S H I P F O R T H E A M E R I C A S

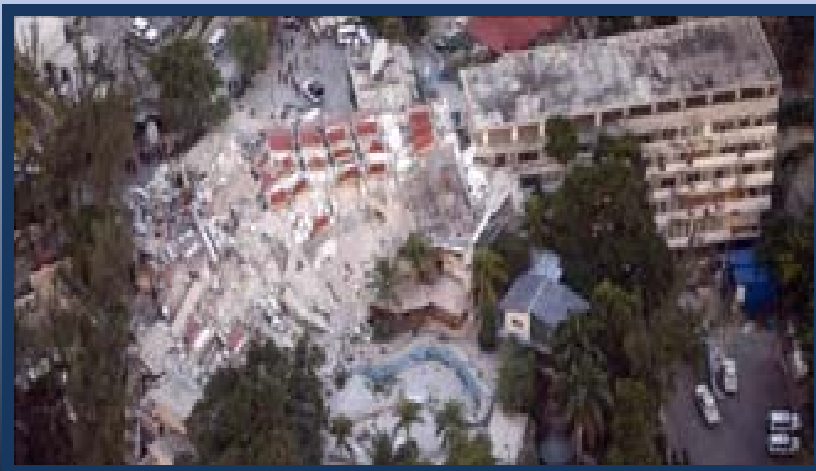
UNCLASSIFIED



7.0 Earthquake Strikes Haiti

January 2010

The Earthquake: According to the U.S. Geological Survey, the most powerful earthquake (7.0 magnitude) to hit Haiti in a century struck 12 January 2010 shortly before 1700 and was centered about 10 miles southwest of Port-au-Prince. According to witnesses, it was felt strongly in eastern Cuba, more than 200 miles away. The quake took place about 6 miles underground, according to the USGS. At least 10 aftershocks followed, including two in the magnitude 5.0 range, the USGS reported.



Logistics Impact: Major damage to the Port-au-Prince seaport, loss of air control tower/perimeter roads at the airport and major building collapse severely complicated initial search & rescue and relief delivery efforts. Thousands of injured Haitians and displaced/missing AMCITs required 24/7 medical & long term recovery team efforts.

EARTHQUAKE-AFFECTED AREAS AND POPULATION MOVEMENT IN HAITI

EARTHQUAKE INTENSITY
 The Modified Mercalli (MMI) Intensity Scale*

4 LIGHT	8 SEVERE
5 MODERATE	9 VIOLENT
6 STRONG	10+ EXTREME
7 VERY STRONG	

*MMI is a measure of ground shaking and is different from overall earthquake magnitude as measured by the Richter Scale.
 *Area shown on map may fall within MMI 9 classification, but constitute the areas of heaviest shaking based on USGS data.

Source: USGS/PAGER Alert Version: 8

→ POPULATION MOVEMENT*

Source: OCHA 02.08.10

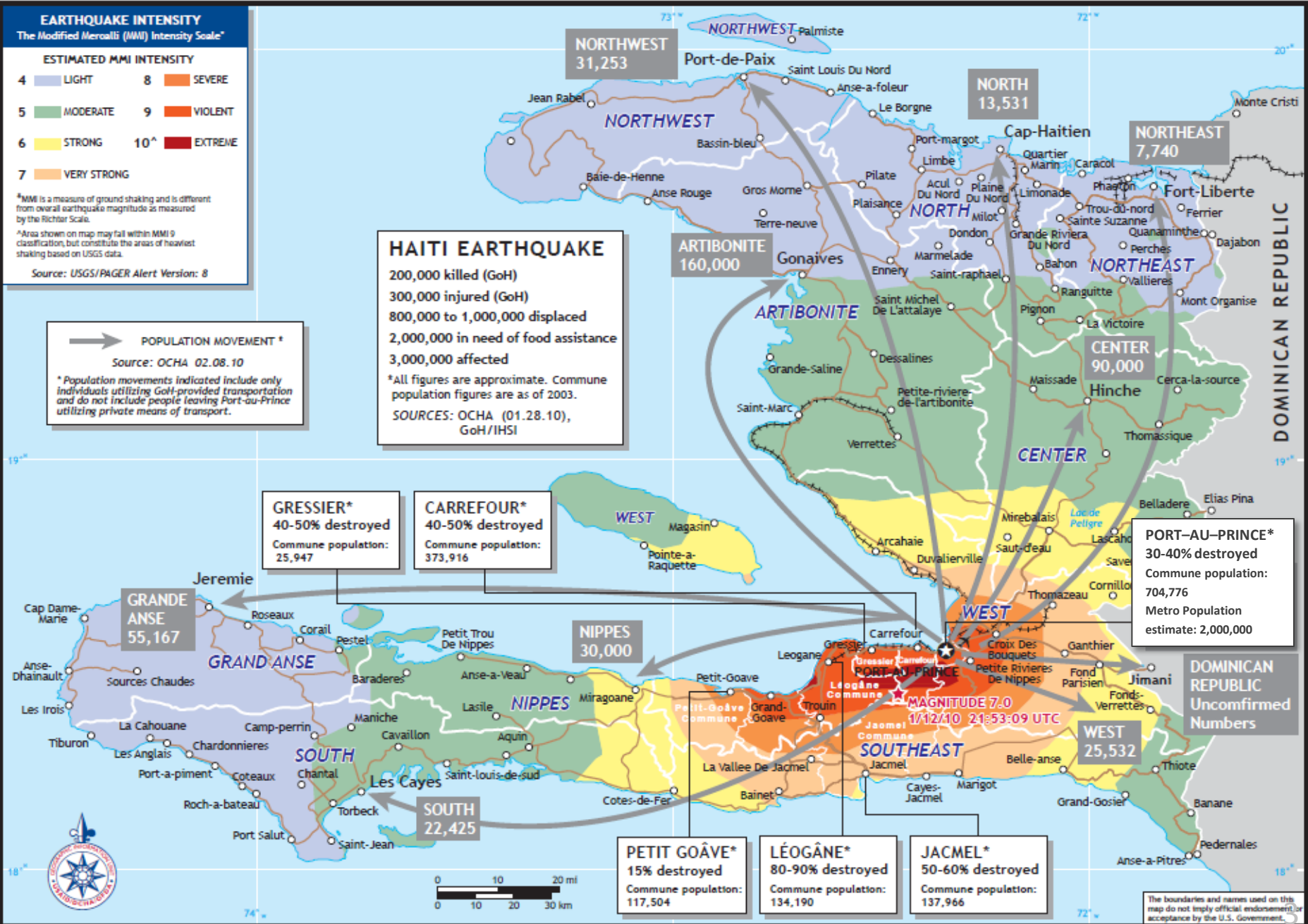
*Population movements indicated include only individuals utilizing GoH-provided transportation and do not include people leaving Port-au-Prince utilizing private means of transport.

HAITI EARTHQUAKE

200,000 killed (GoH)
 300,000 injured (GoH)
 800,000 to 1,000,000 displaced
 2,000,000 in need of food assistance
 3,000,000 affected

*All figures are approximate. Commune population figures are as of 2003.

SOURCES: OCHA (01.28.10), GoH/IHSI



GRESSIER*
 40-50% destroyed
 Commune population: 25,947

CARREFOUR*
 40-50% destroyed
 Commune population: 373,916

PORT-AU-PRINCE*
 30-40% destroyed
 Commune population: 704,776
 Metro Population estimate: 2,000,000

DOMINICAN REPUBLIC
 Unconfirmed Numbers

PETIT GOÂVE*
 15% destroyed
 Commune population: 117,504

LÉOGÂNE*
 80-90% destroyed
 Commune population: 134,190

JACMEL*
 50-60% destroyed
 Commune population: 137,966

The boundaries and names used on this map do not imply official endorsement or acceptance by the U.S. Government.



Mission and Objectives

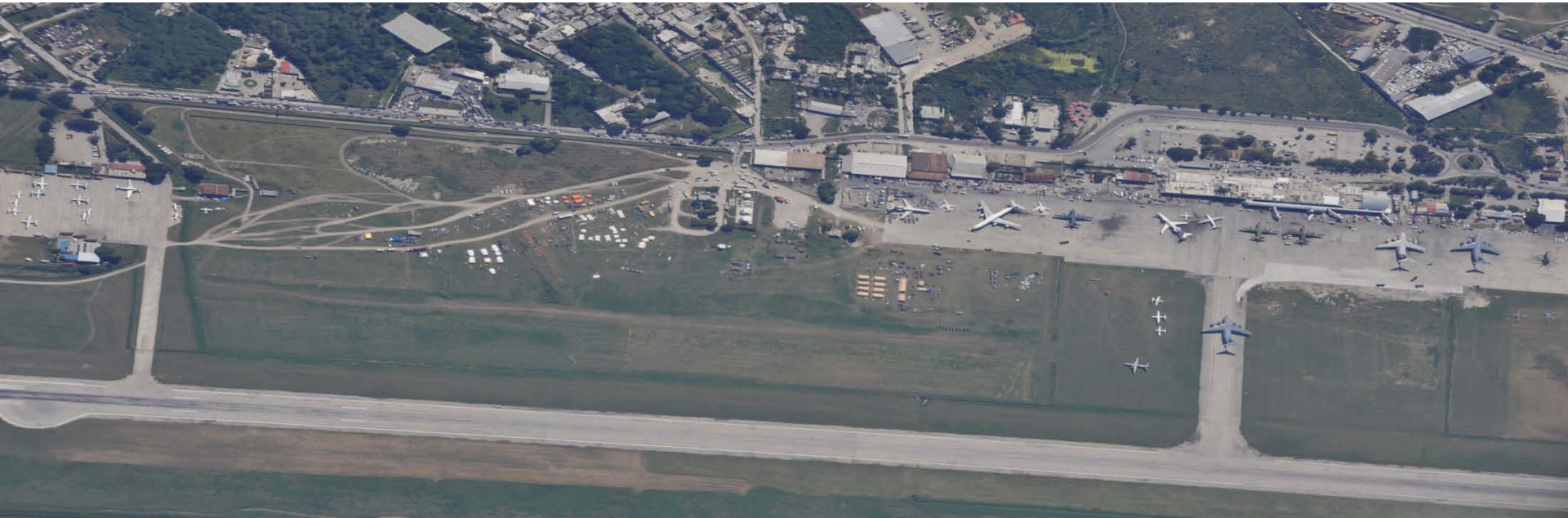
Mission: Conduct Foreign Humanitarian Assistance and Disaster Relief (FHA/DR) in support of U.S. Government efforts in Haiti, in order to mitigate near term human suffering and accelerate recovery.

Objectives:

- Provide direct, urgent humanitarian relief support to the government & people of Haiti
- Provide security in support of humanitarian relief to the government & people of Haiti
- Provide sustaining support to the government & people of Haiti
- Prevent deterioration of general security within Haiti
- Provide logistics enabling support to international relief efforts
- Evacuate American citizens as required
- Be prepared for mass casualties and mass migration
- Prevent misperceptions regarding USG relief and support effort



Transportation Challenges





Overcoming Obstacles



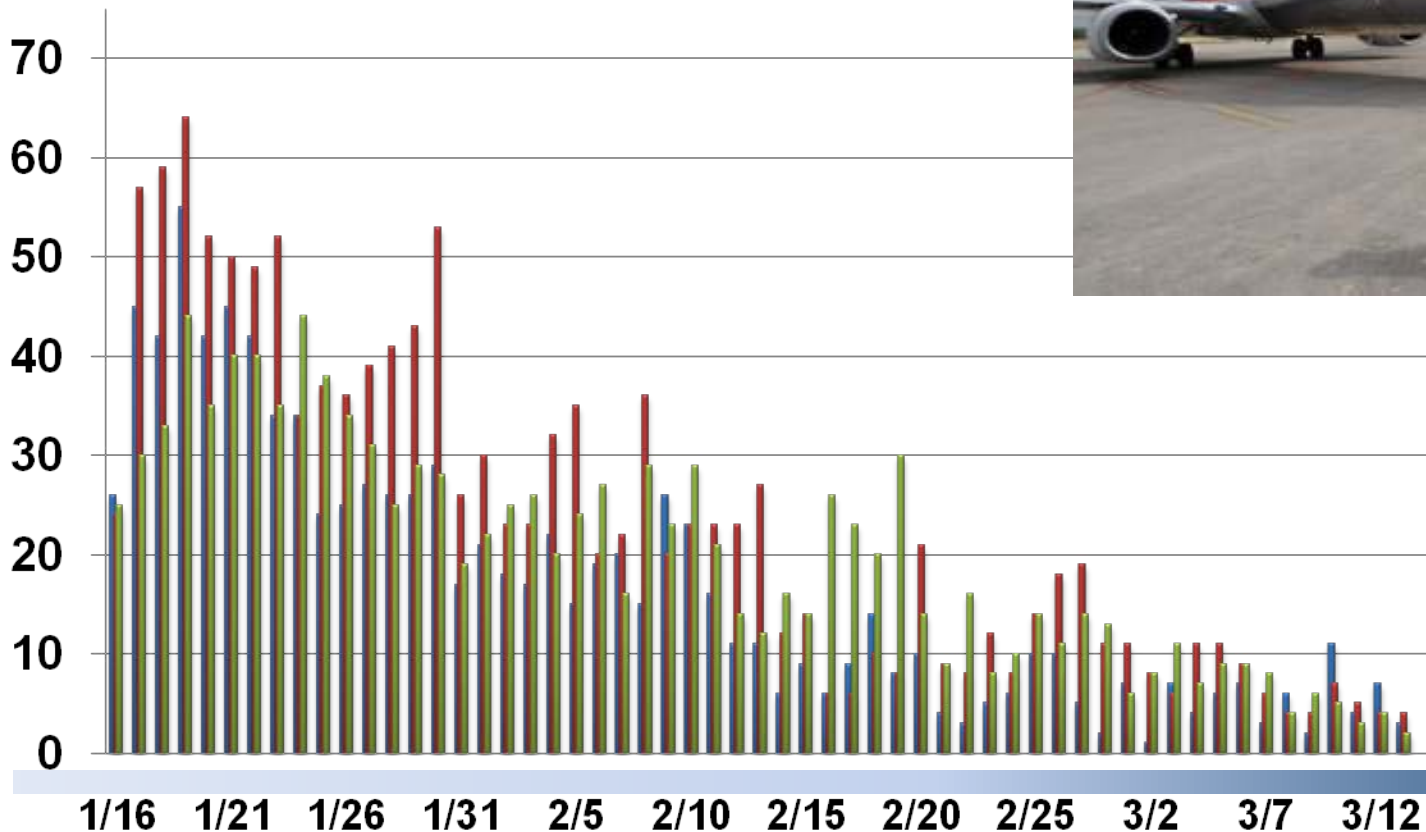


Air Flow

- Total sorties into Port-au-Prince: 3,982 (DOD 868//Non 3,114)
- Total AMCITs evacuated: 16,412
- Commercial air flights resumed 19 February
- Slot allocation controlled by GoH as of 16 March



■ US Gov ■ US Civ ■ UN/Intl



% To Date:

US Gov	28%
US Civ	38%
UN/Intl	34%

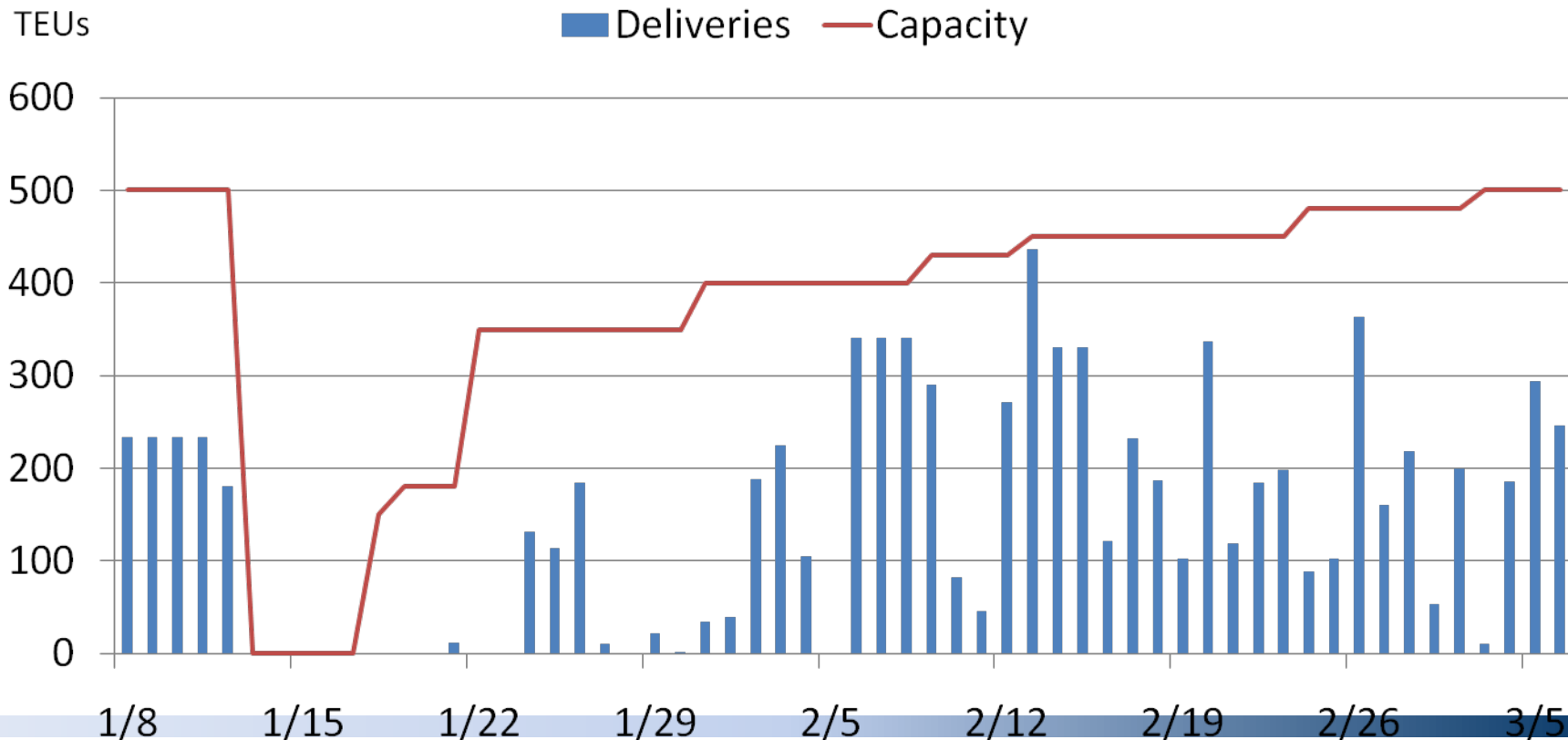
(slot numbers as of 16 Mar 10)



Maritime Flow

Port-au-Prince (North and South Piers)

- 85,000 Twenty-foot Equivalent Units (TEUs) in CY 2009
 - Average of 233 TEUs a day in CY 2009
 - Target capacity is 700 TEUs a day
- (numbers as of 14 Mar 10)





Saving Lives, Easing Suffering



MEDICAL NUMBERS AT A GLANCE

DoD:

- 1,019 Medical Personnel
- *USNS COMFORT*
- 1,025 Total Surgeries
- 9,752 Patients treated

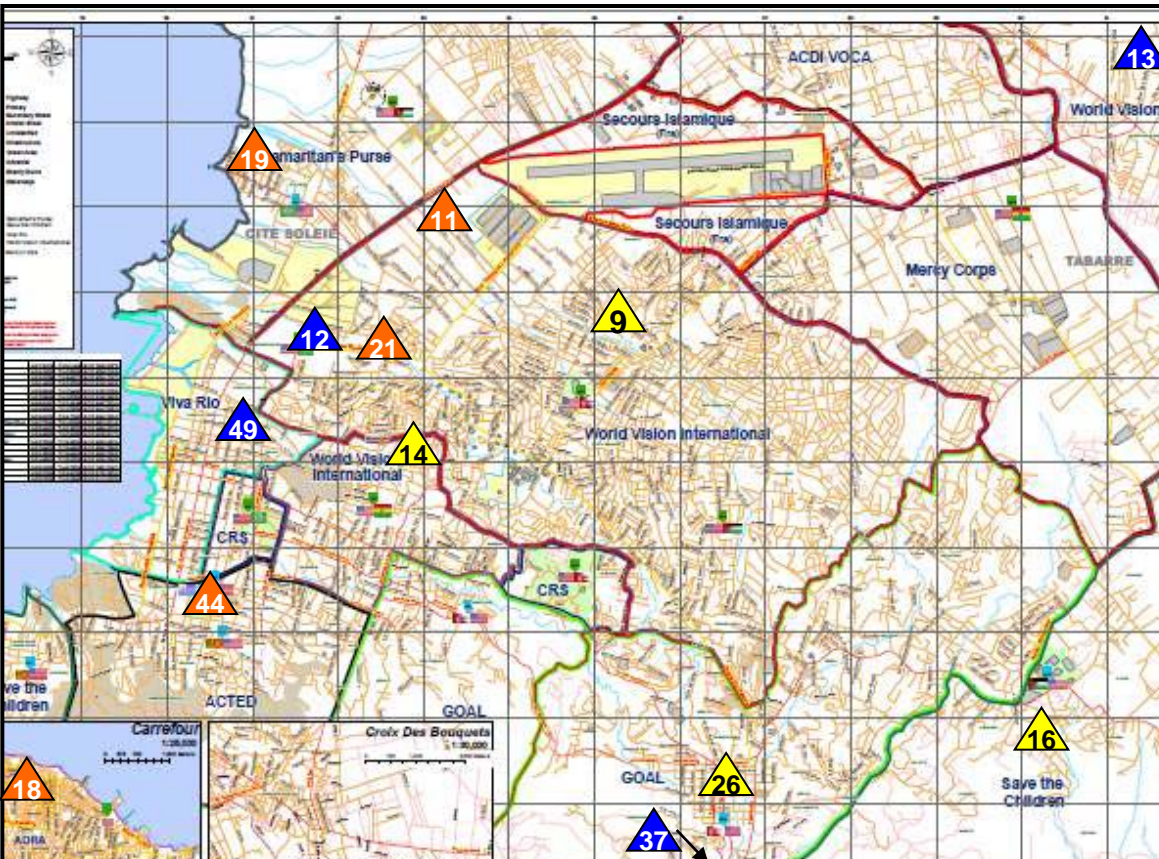
Interagency Partners:

- 227 PAX HHS/FEMA Disaster Medical Assistance Teams
- 103 PAX USAID DART Teams
- 29,870 Patients treated by HHS



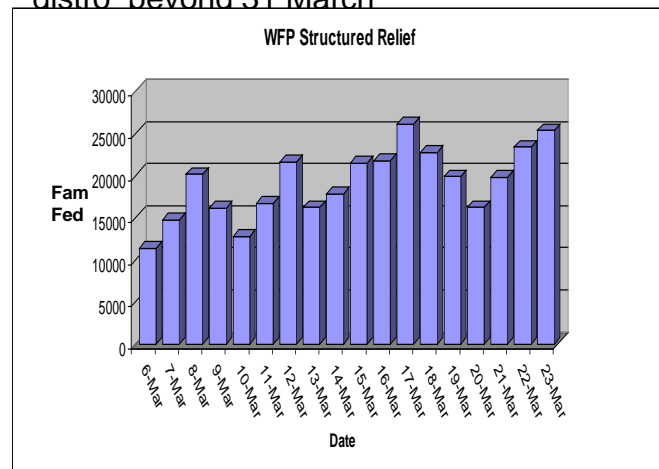


Food and Water Distribution



HIGHLIGHTS:

- 31Mar: Last day of “Structured Relief”
- GoH approved an extension of Phase II food distro beyond 31 March



DoD Food and Water Distribution

To Date:

Food: 2.3 million meals
 17.5 million pounds of bulk food
 Water: 2.6 million bottles

USAID Food and Water Distribution

Food Cluster Plan: WFP and NGOs implementing partners are continuing general food distributions and transitioning towards food-and-cash for work

Families Given Food on 31 Mar (by Distribution Point): As reported by NGOs

- ▲ 30 MAR
- ▲ 31 MAR
- ▲ 30 & 31 MAR

9, 11, 14, 21 – 15,230	19 – 1919
16 – 700	26 – 1913
18 – 2530	44 – 3045



Security





Public Private Cooperation



Collaboration and Integration

- Worked with business and NGO partners to bolster relief efforts
- Coordinated donation of supplies (medical, water, food, engineering equipment) worth \$36.2 million
- Augmented mission with 184 NGO medical specialists and translators (36,064 man hours)
- 3,800 lbs of general medical supplies delivered via FedEx to Missionaries of Charity
- Partnerships with leading medical schools and associations
- First time American Red Cross responded to a foreign disaster
- 1 million meals from Salvation Army
- 175,00 lbs general supplies via FedEx to Haiti Medical Mission
- 18 pallets of general supplies
- 1,462 pallets of bottled water
- 500 cases of water delivered by Spirit Airlines
- 11 pallets via FedEx to Sow a Seed

In-Kind Donations Brokered

Transportation :

- \$1.8 million pro bono private sector flights and services
- Transported relief supplies /rescue workers
- SATCOM for portable FAA tower at Port au Prince

Medical Supplies and Services:

- > \$30 million value (>250,000-lbs, including pharmaceuticals)
- 83 Creole translators on USNS Comfort
- 101 NGO medical professionals on USNS Comfort

Water:

- \$2.8 million in bottled water
- 2 wells: 1,960,000 gallons daily
- Purification systems: servicing > 150,000 people daily

Equipment & General Supplies:

- \$1.5 million construction equipment (backhoes, graters, forklifts)
- > 1,000,000 lbs of supplies (tents, blankets, food etc.)





Shelter



SHELTERS NUMBERS AT A GLANCE

1,300,000	People require shelter in Port-au-Prince
259,266	Tarps distributed by UN <ul style="list-style-type: none"> • 63% of basic shelter needs met
230	International and Haitian engineering professionals conducting housing habitability assessments in Port-au-Prince
16 March	Brazilian MINUSTAH engineers began preparation of Tabarre Issa camp
12 April	MINUSTAH to transfer 2,500 IDPs to Tabarre Issa
15 April	Rainy Season Starts
1 June	Hurricane Season Starts



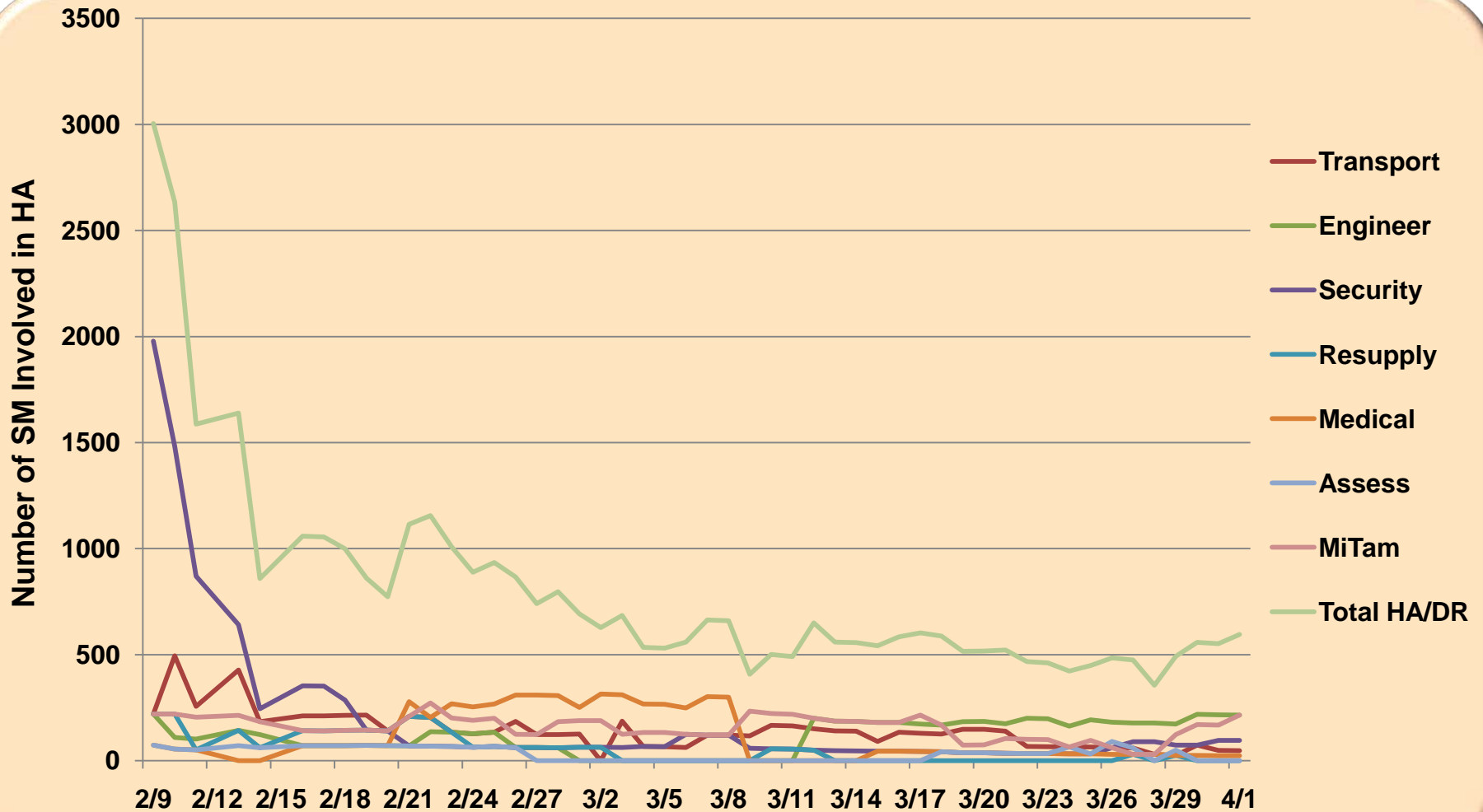


Debris Removal





Mission Utilization





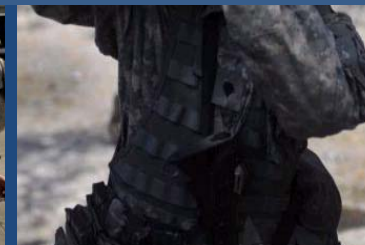
Humanitarian Assistance Observations

Humanitarian Assistance Observations

- HA/DR mission the Interagency & DoD support role
- Overseas Humanitarian, Disaster & Civic Aid (OHDACA)
- DoD-an expensive solution!
- Interagency Capabilities/listen to OFDA

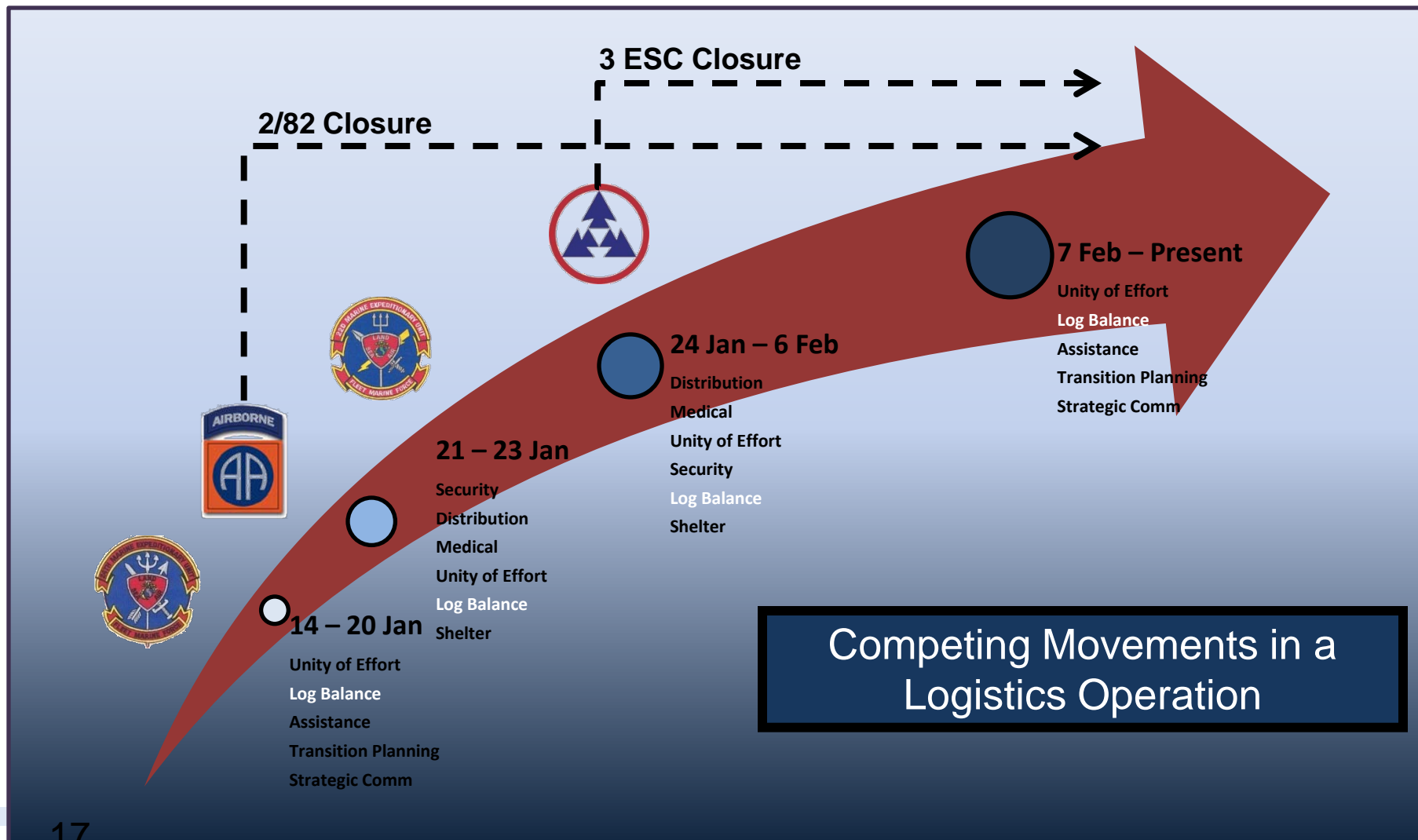
Defining Success/Operational Design

- Challenges in identifying requirements
- Define End State
- Mission Creep
- Perception Management





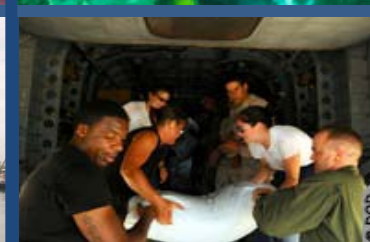
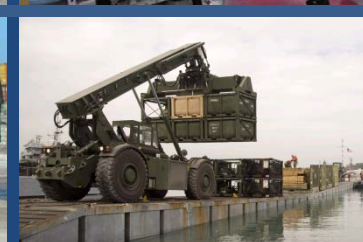
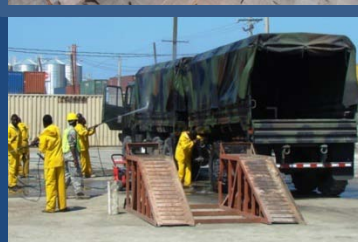
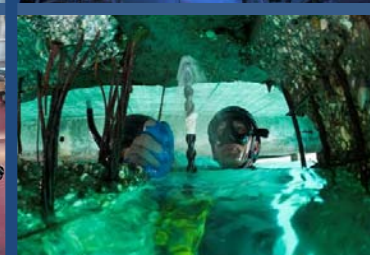
Force Flow vs Logistics Priority





Success Stories

- USTC Rapid Port openings (Air/Sea)
- Repatriation of US Citizens
- JLOTS Employment
- Contract Support
- Mortuary Affairs
- Crowley Barge
- WFP Food Surge
- USS Comfort
- COCOM support





Accomplishments

Airport

- Reorganized and operated the Airfield
- 3,952 sorties to Hispaniola (as of 24 MAR)
- 18,351 Short Tons
- 27,000 Passengers
- 16,412 AMCITs & 400 adoptees evacuated
- 120/122 missing AMCIT cases completed; 30 remains evacuated to Dover (28 AMCITs, 2 non-US) (42 total transported to date)
- CAA resumed Haitian control of airspace

Shelter

- Supported distribution of Emergency Shelter for 811K people
- Engineering Assessments of 2,043 structures and 283 acres
- 87 blocks of rubble removed in Port au Prince

Partnership Collaboration

- Coordinated donations of humanitarian supplies worth \$36.2 million pro bono private sector.
- Augmented the mission with 184 NGO medical specialists and translators (36,064 man hours)
- Military planning support for USAID, IGO, NGO
- Strengthening Relationships with the GoH, MINUSTAH, UN, NGOs, IGOs

Secure Environment for HA/DR Operations



Sea Port

- Reopened damaged port
- Doubled port capacity
- 8867 TEU off loaded; 10.3K ST
- Enabled APN to assume security, cargo, and scheduling of port operations
- Repair of South pier in progress – 94% done
- Coast Guard installed Navigational Aid

DOD Medical Support

- 9,758 patients treated
- 1,464 admissions, 8,288 outpatients; 1,025 surgeries
- 255 MEDEVACS
- 75 tons of medical supplies distributed
- 5 Search and Rescue operations

HA/DR

- Sustainable support system confirmed across affected population
- Service Members provided:
 - 2.3M meals
 - 17M pounds of bulk food
 - 2.6M bottles of water

