

The Role of Enterprise Architecture Updates in Guiding Decentralized Organizations

John Schatz
SPEC Innovations

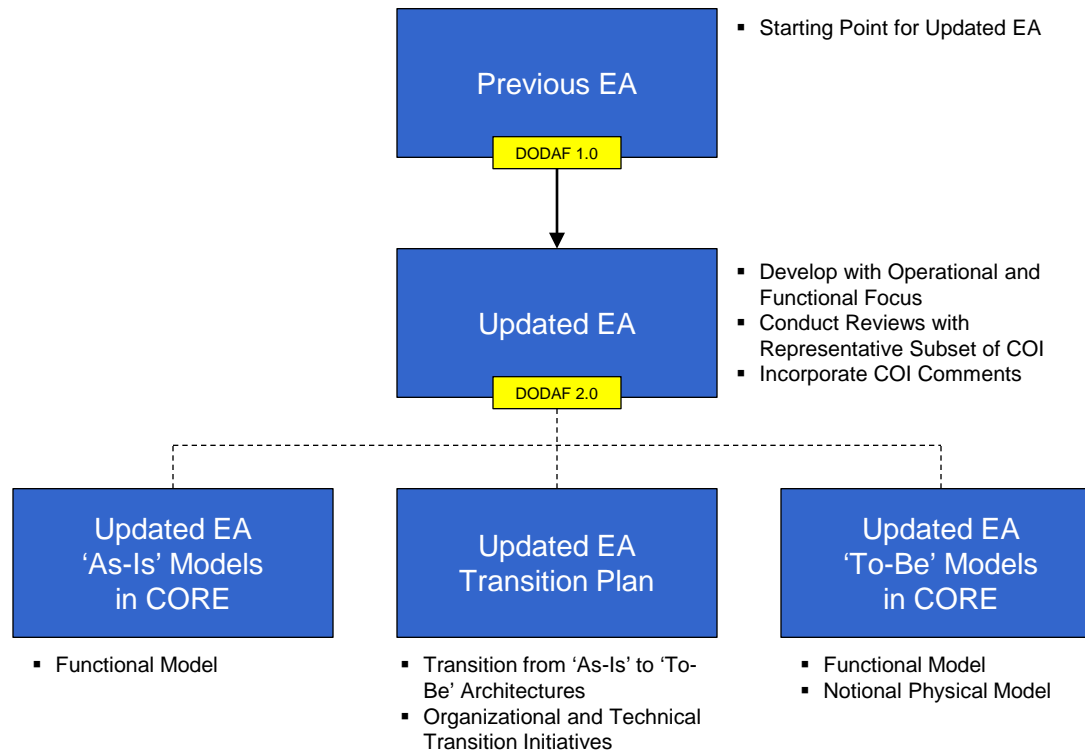
Overview

- Enterprise Architecture and Systems Study Interrelation
- Systems Study Methodology
- Systems Study Data Manipulation
- Summary
- Backup Slides

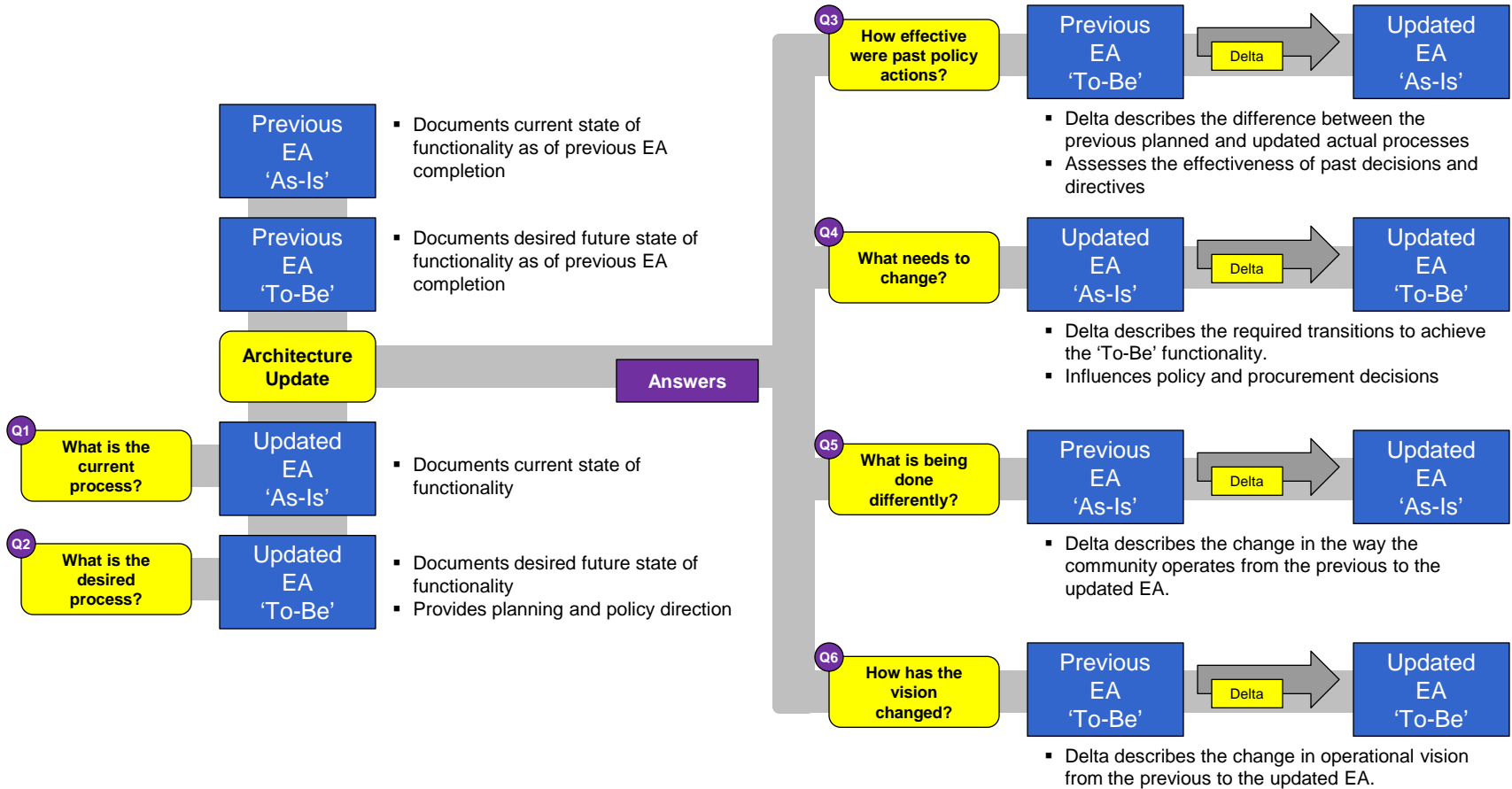


ENTERPRISE ARCHITECTURE AND SYSTEMS STUDY INTERRELATION

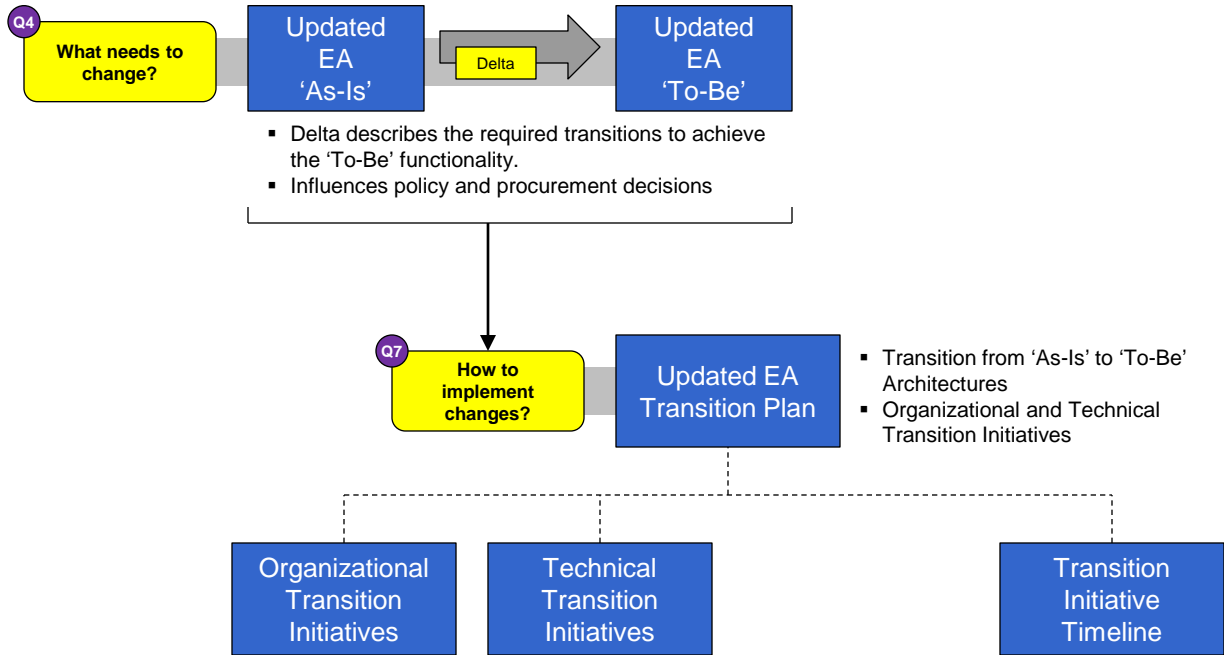
Enterprise Architecture (EA)



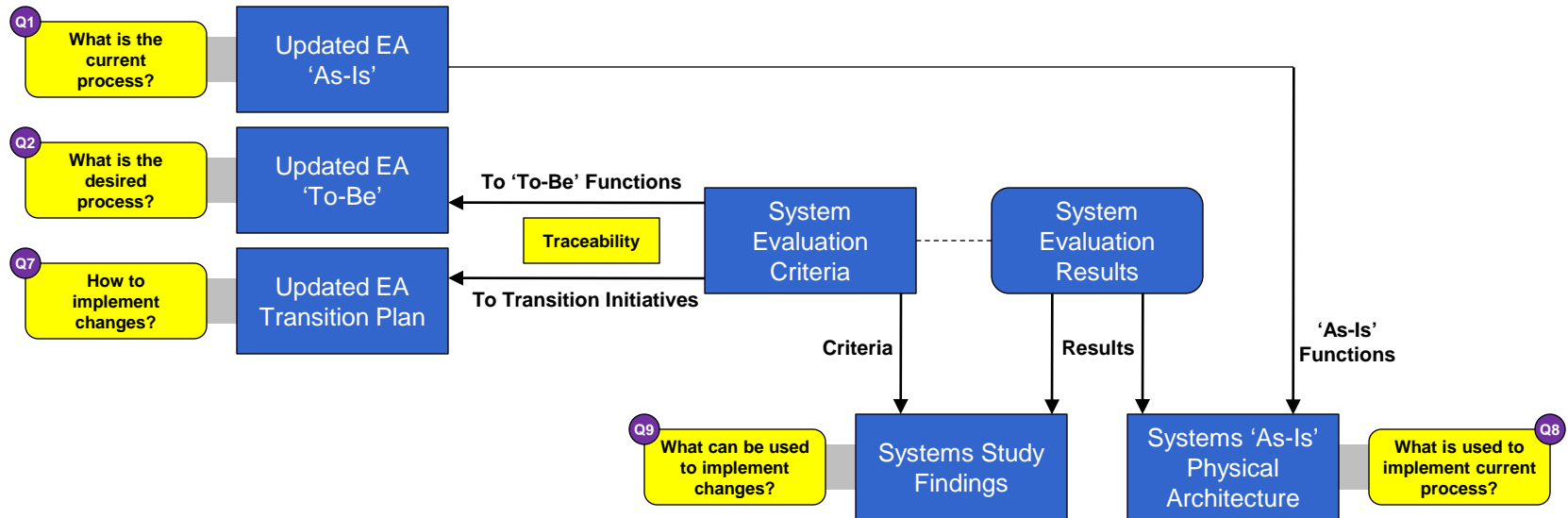
Why Update the EA?



EA Transition Plan



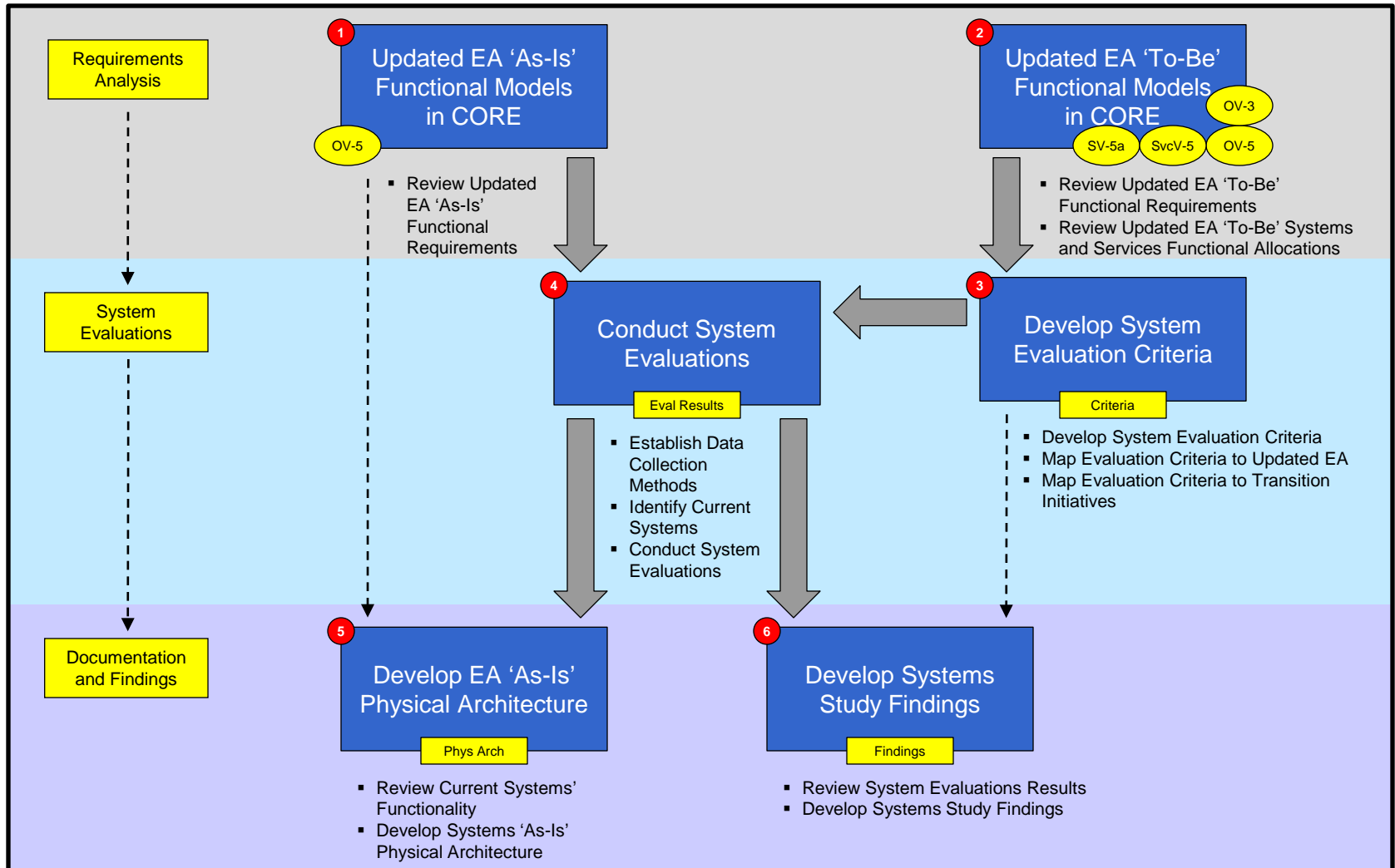
EA to Systems Study



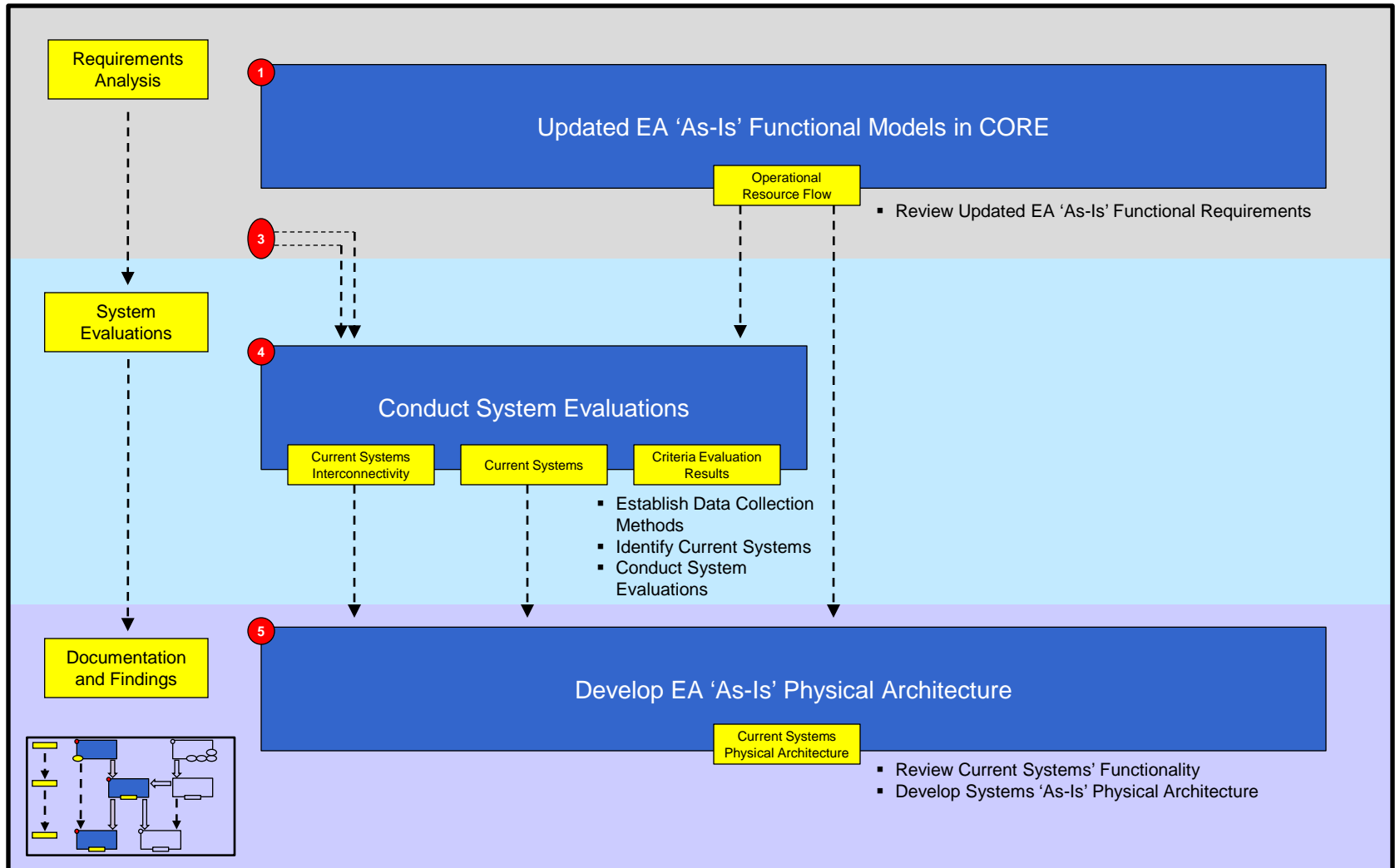
The Systems Study Findings will show how existing systems might be leveraged to implement the desired processes and changes as defined in the Updated EA.

SYSTEMS STUDY METHODOLOGY

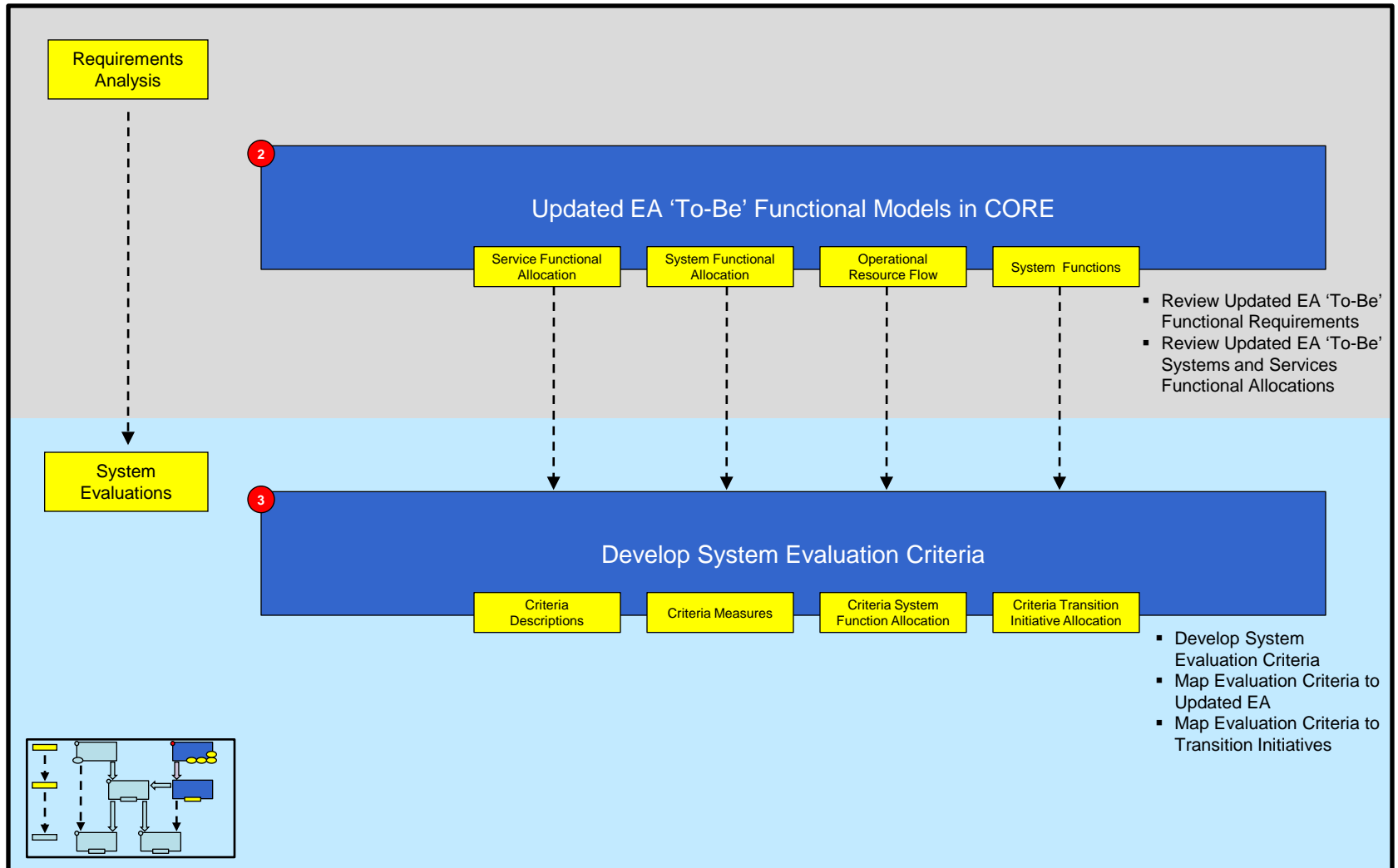
Systems Study Path Forward



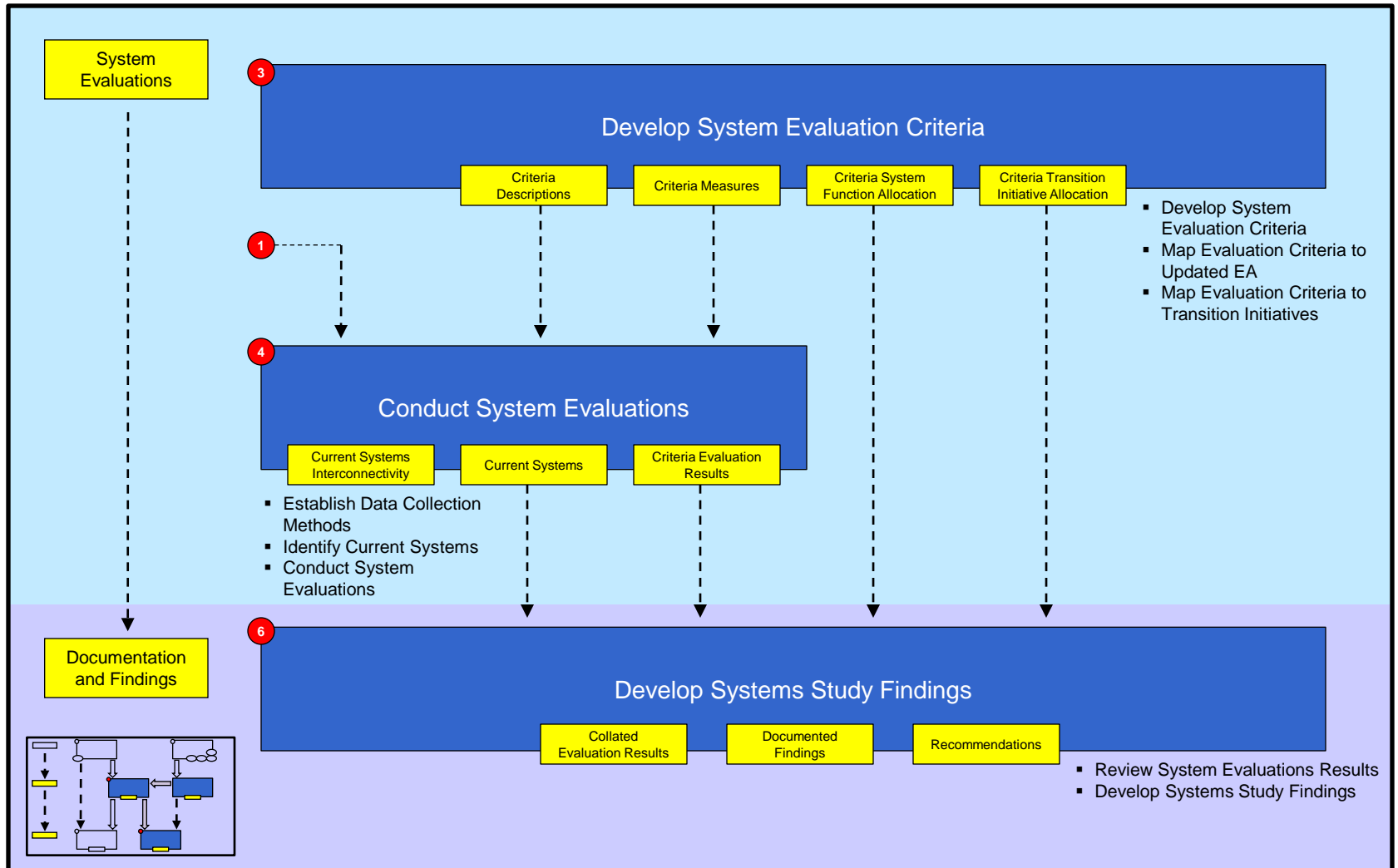
Systems Study Path Forward



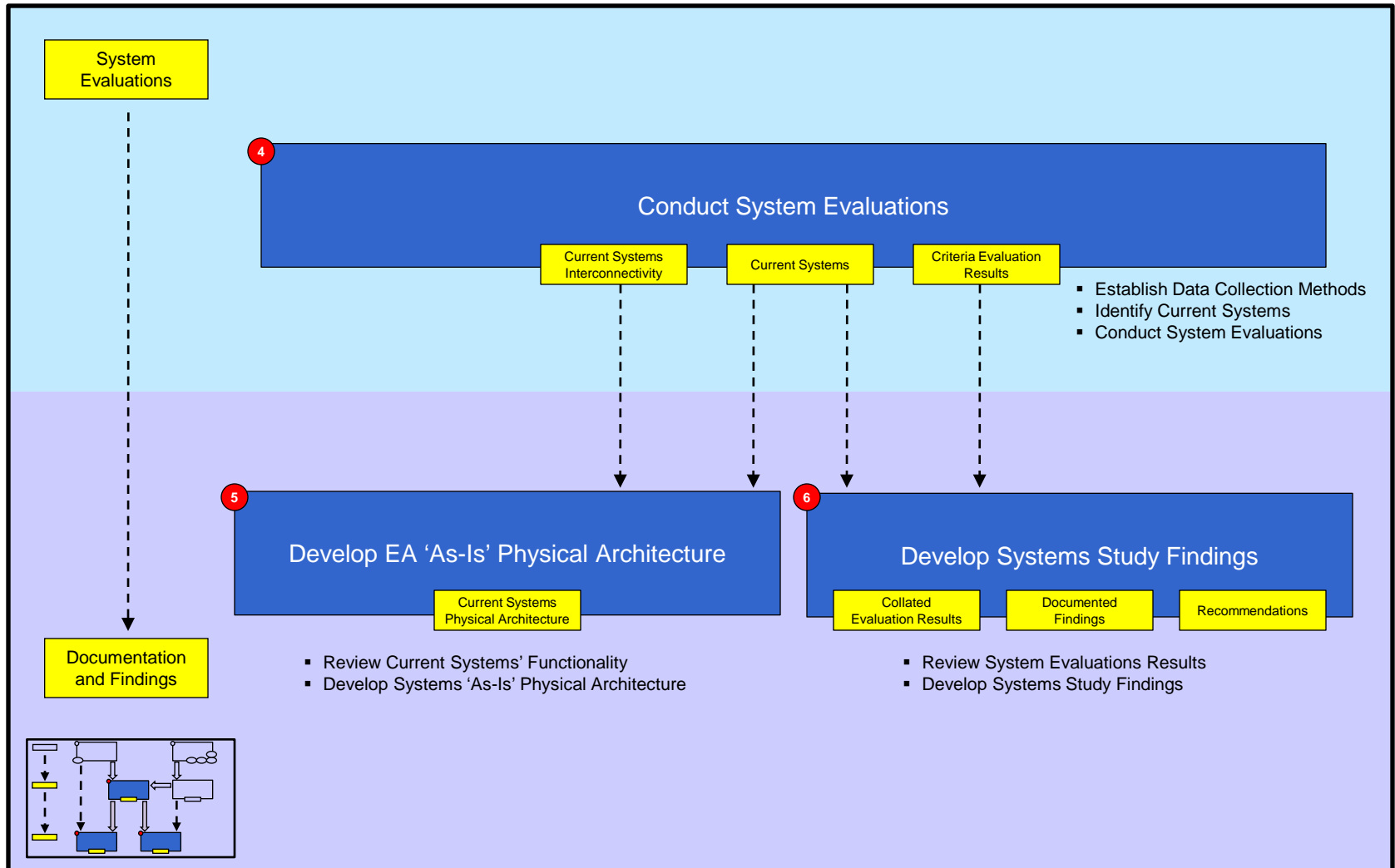
Systems Study Path Forward



Systems Study Path Forward

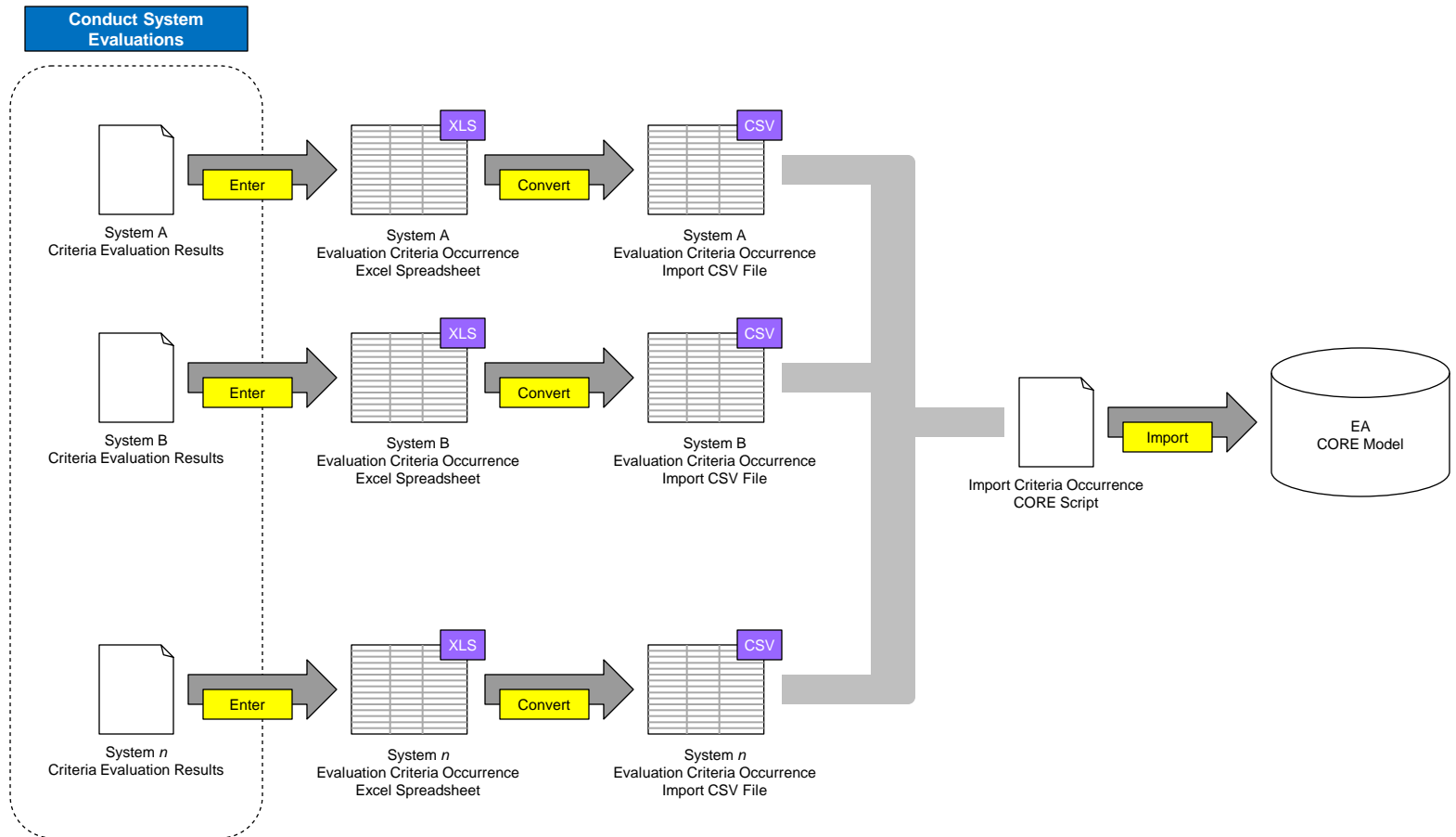


Systems Study Path Forward

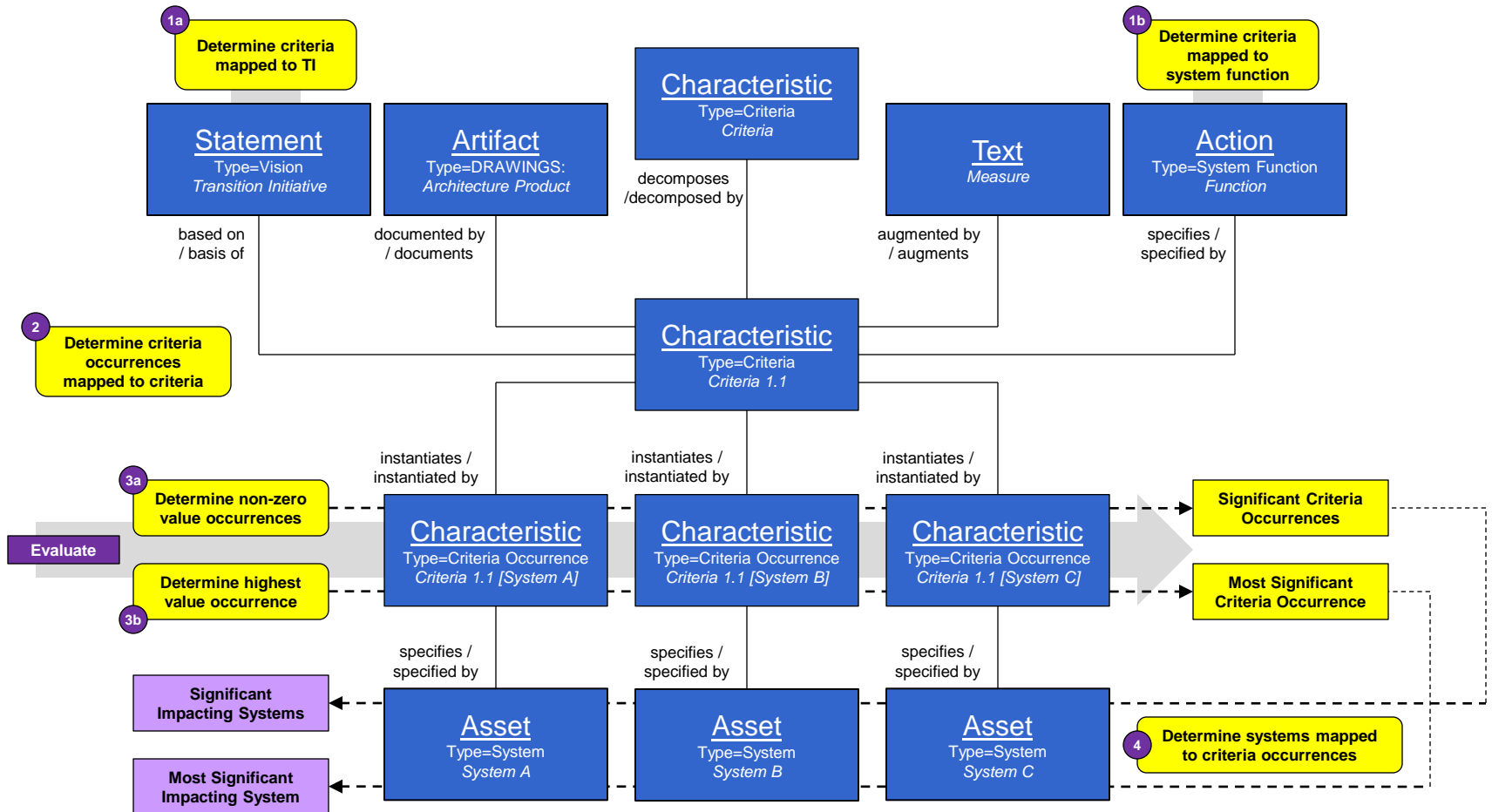


SYSTEMS STUDY DATA MANIPULATION

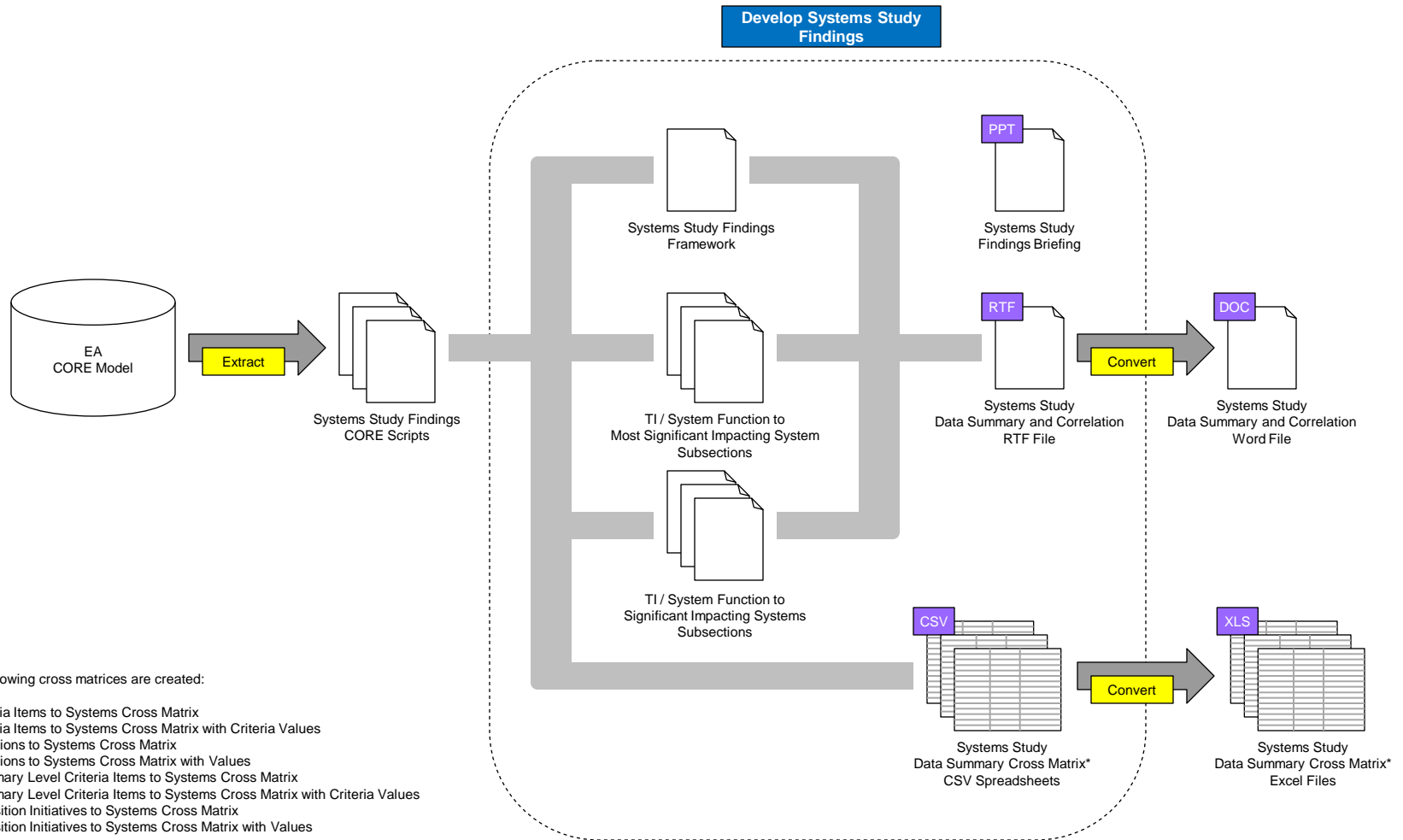
Criteria Evaluation Results Data



Determining Systems Potentially Impacting Changes



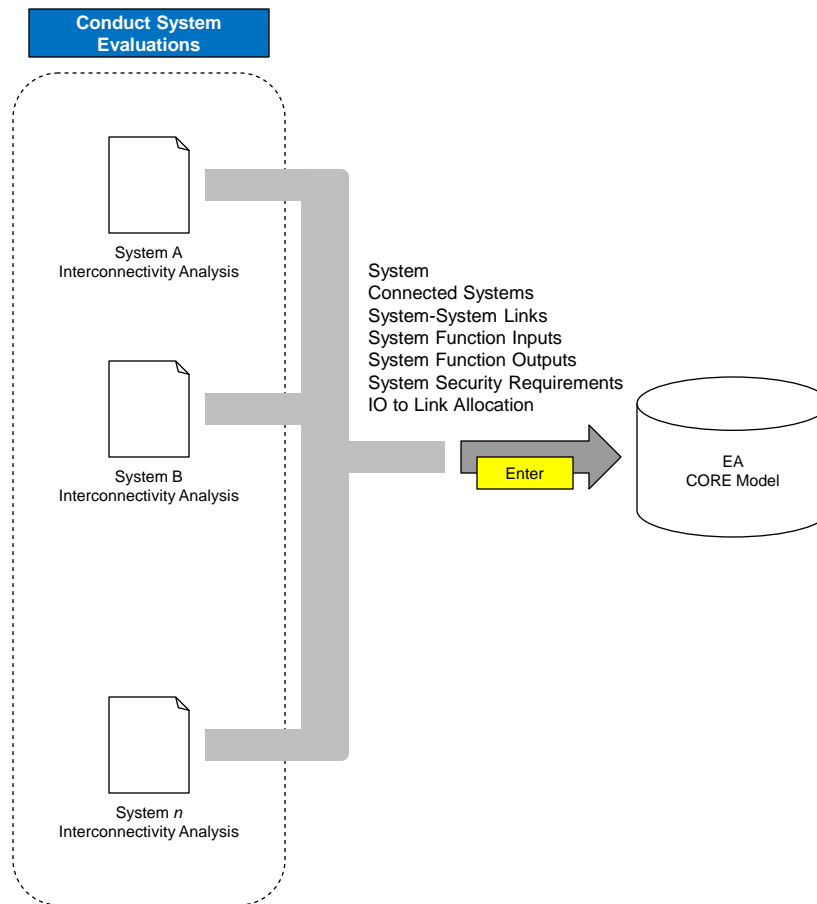
Findings Document Creation



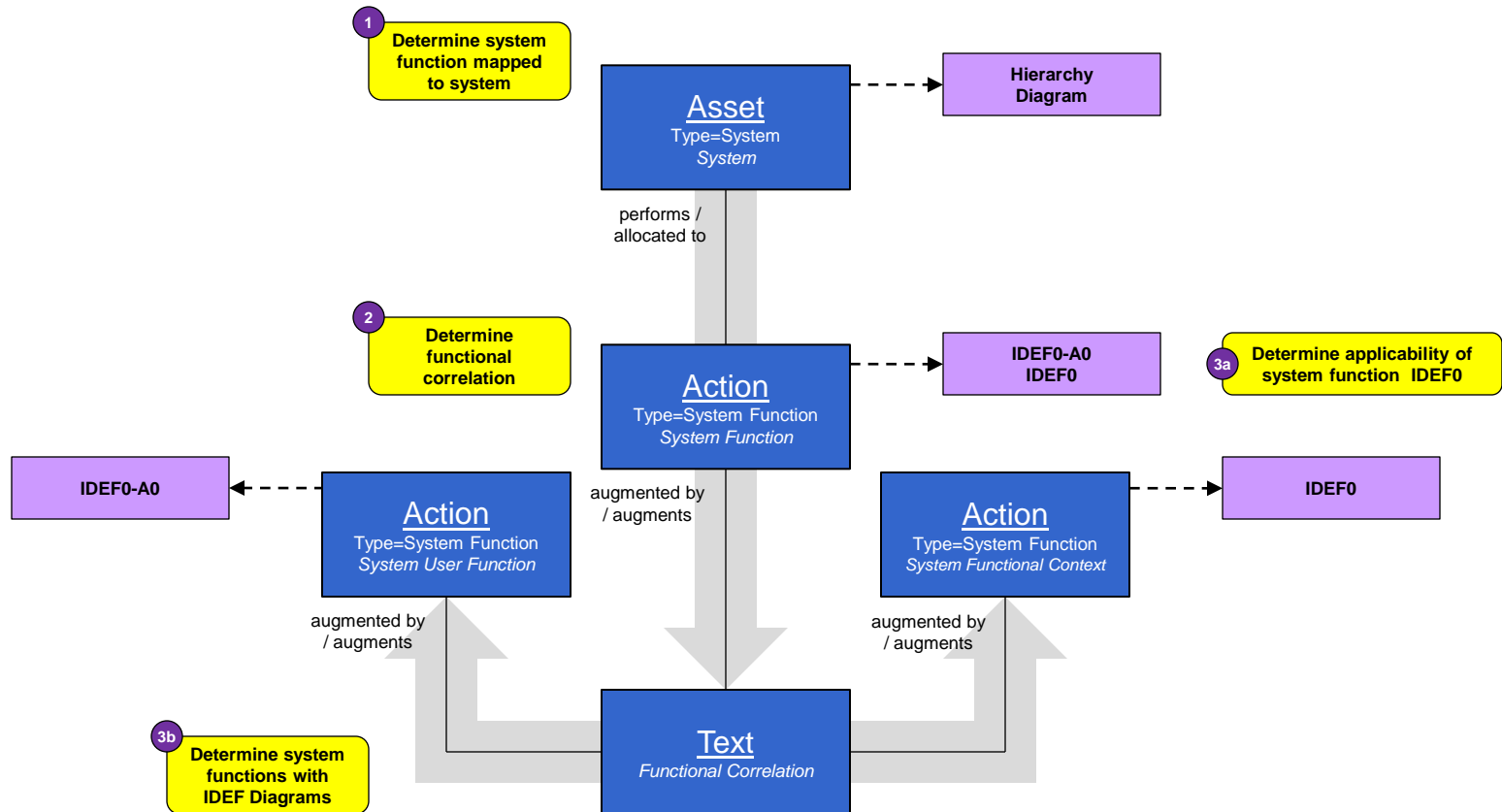
* The following cross matrices are created:

- Criteria Items to Systems Cross Matrix
- Criteria Items to Systems Cross Matrix with Criteria Values
- Functions to Systems Cross Matrix
- Functions to Systems Cross Matrix with Values
- Summary Level Criteria Items to Systems Cross Matrix
- Summary Level Criteria Items to Systems Cross Matrix with Criteria Values
- Transition Initiatives to Systems Cross Matrix
- Transition Initiatives to Systems Cross Matrix with Values

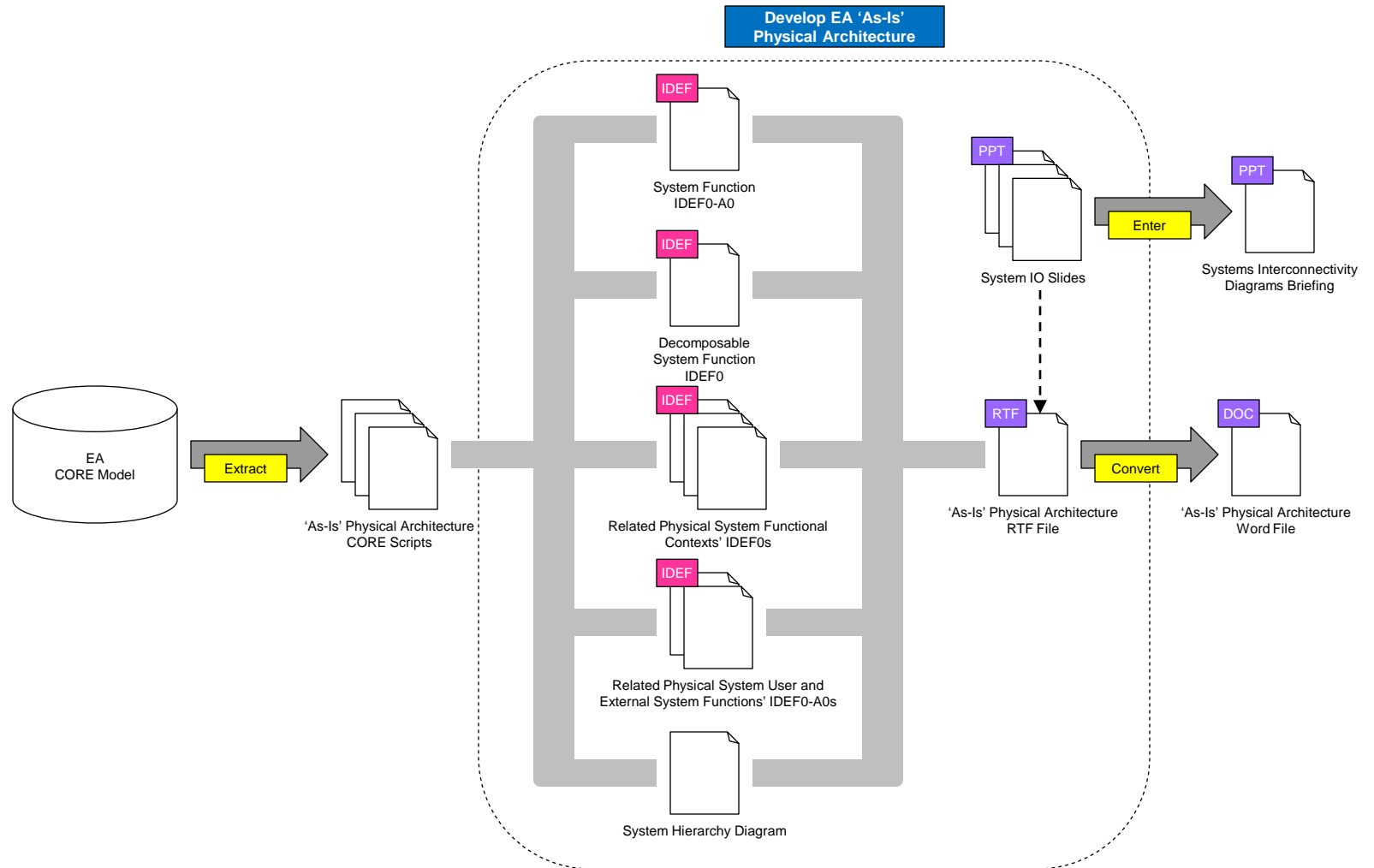
System Interconnectivity Data



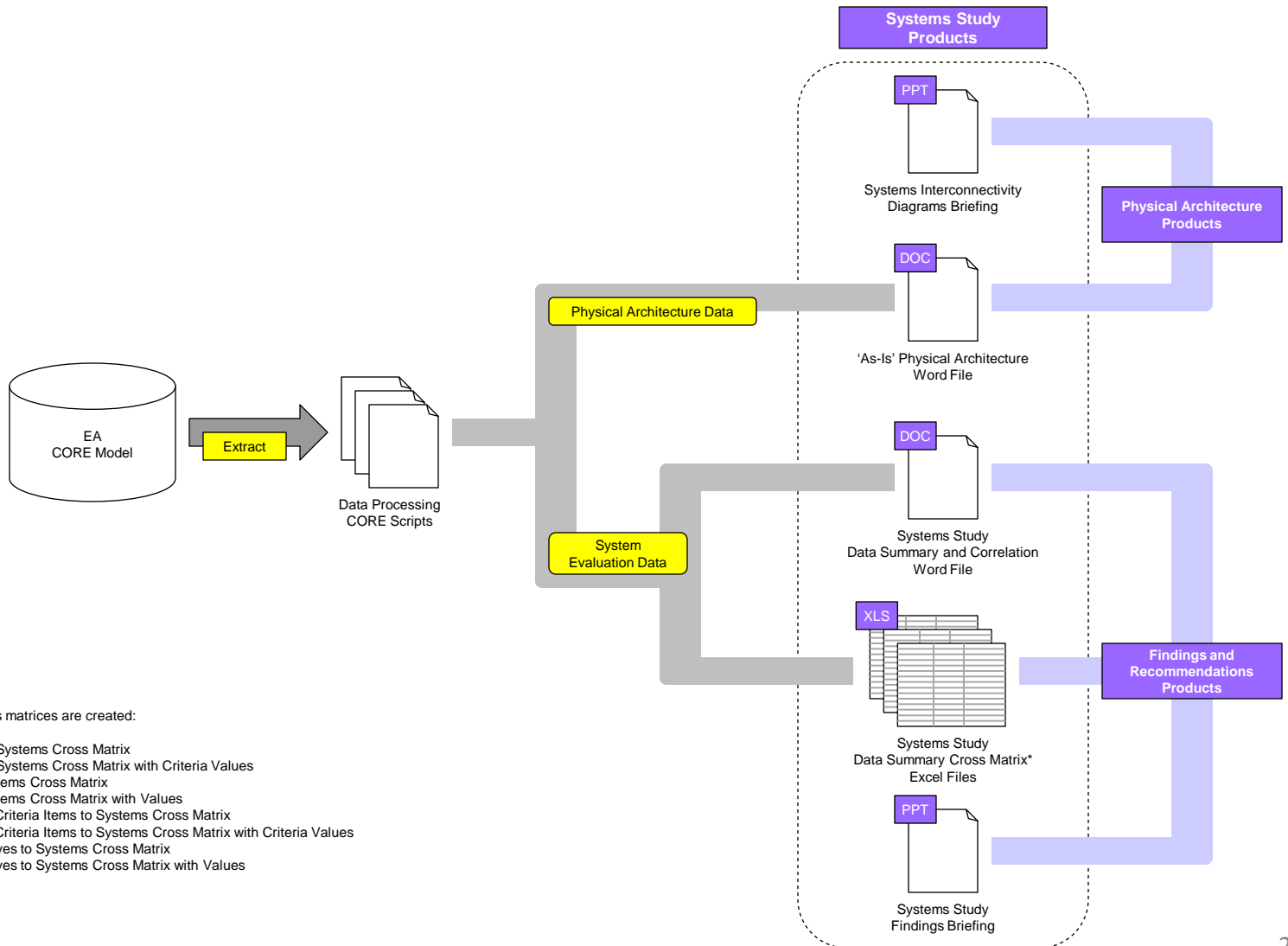
Physical Architecture Model Rendering



Physical Architecture Document Creation



Systems Study Product Creation



* The following cross matrices are created:

- Criteria Items to Systems Cross Matrix
- Criteria Items to Systems Cross Matrix with Criteria Values
- Functions to Systems Cross Matrix
- Functions to Systems Cross Matrix with Values
- Summary Level Criteria Items to Systems Cross Matrix
- Summary Level Criteria Items to Systems Cross Matrix with Criteria Values
- Transition Initiatives to Systems Cross Matrix
- Transition Initiatives to Systems Cross Matrix with Values

SUMMARY

Summary

- Enterprise Architecture (EA) updates answer questions regarding the state and direction of the enterprise.
- Systems Study findings show how existing systems might be leveraged to implement the desired processes and changes as defined in the Updated EA.
- Systems Study data should be stored in the architecture database and mapped to the EA and Transition Initiatives.

BACKUP SLIDES

Enterprise State and Direction Questions

Question	Architectural Product / Product Comparison
Q1 What is the current process?	Updated EA 'As-Is' Functional Architecture
Q2 What is the desired process?	Updated EA 'To-Be' Functional Architecture
Q3 How effective were past policy actions?	Previous EA 'To-Be' Functional Architecture / Updated EA 'As-Is' Functional Architecture Delta
Q4 What needs to change?	Updated EA 'As-Is' Functional Architecture / Updated EA 'To-Be' Functional Architecture Delta
Q5 What is being done differently?	Previous EA 'As-Is' Functional Architecture / Updated EA 'As-Is' Functional Architecture Delta
Q6 How has the vision changed?	Previous EA 'To-Be' Functional Architecture / Updated EA 'To-Be' Functional Architecture Delta
Q7 How to implement changes?	Updated EA Transition Plan
Q8 What is used to implement current process?	Updated Systems 'As-Is' Physical Architecture
Q9 What can be used to implement changes?	Updated Systems Study Findings

Physical Architecture Diagram Summary

