



ASA (AL&T)

ASA(ALT) System of Systems Engineering “Architecture” Developments

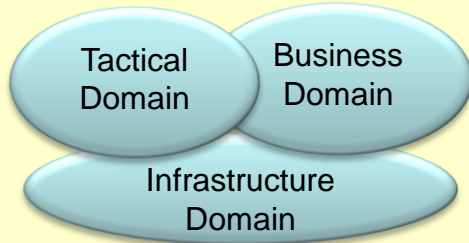
NDIA Systems Engineering Conf 27 Oct 2010

**Mr. David E. Poole
ASA(ALT) SoSE
(703) 697-6901
david.poole@us.army.mil**

System of Systems Engineering (SoSE) – Environment

ASA (AL&T)

Scope



Build the Bench

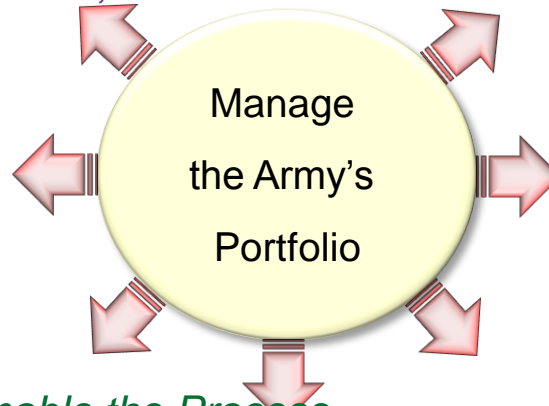
- Organize the Army Engineering Community
- Establish Technical Authority and engineering expertise/capability
- Pursue accreditation and certifications of organic workforce & organizations

Create Data Transparency

- Establish CM and an authoritative repository for products
- Establish a collaboration environment
- Establish a common operating environment for engineering Products

Mission

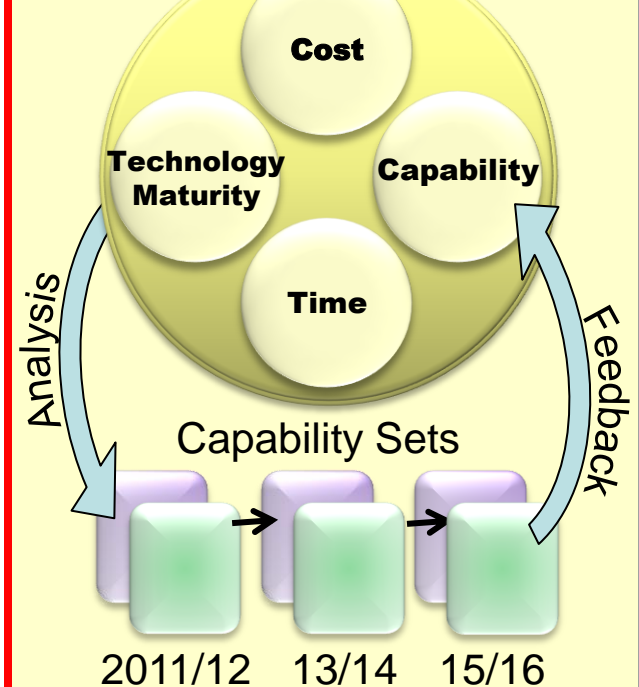
The Mission of ASA(ALT) SOSE: Provide the Army's leadership and materiel developers with the necessary engineering/architectural products to manage and shape the Army's materiel portfolio, to ensure a System Engineering discipline across the Materiel developer community throughout the acquisition life cycle and grow the System Engineering capability within the Army – through education, engineering policy, guidelines and adoption of best industry practices,.... "Build the Bench".



Enable the Process

- Establish the engineering process to deliver synchronized capability
- Establish the analytical structure with models & simulations
- Establish the engineering compliance structure/process for acquisition execution excellence
- Deliver engineering support to HQ staff and acquisition community

Product



Manage the Portfolio

- Support the prioritization of capabilities within the portfolio
- Set the baseline architecture roadmap over time
- Support the resourcing process
- Synchronize and align the S&T, systems integration, test, and certification activities



ASA(ALT) SoSE Major Workload Areas*

ASA (AL&T)

- Performing SoS-level trades, developing and communicating recommendations to decision makers
- Integration of new systems into the SoSE process (i.e. CDRT, Mod strategy, etc.)
- Annual architecture development and integration efforts
- High priority ad hoc targeted trades
 - Same processes/tool/relationships



Making 'Architecture' Relevant

ASA (AL&T)

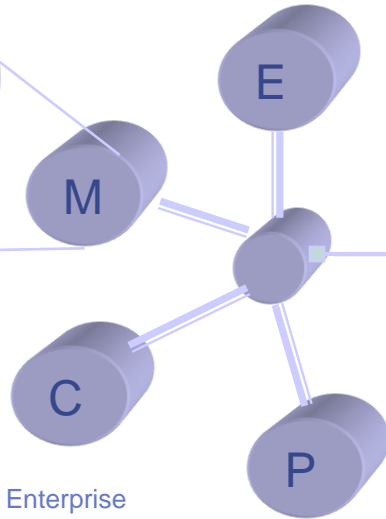
Architecture Views



"Fit for Purpose"

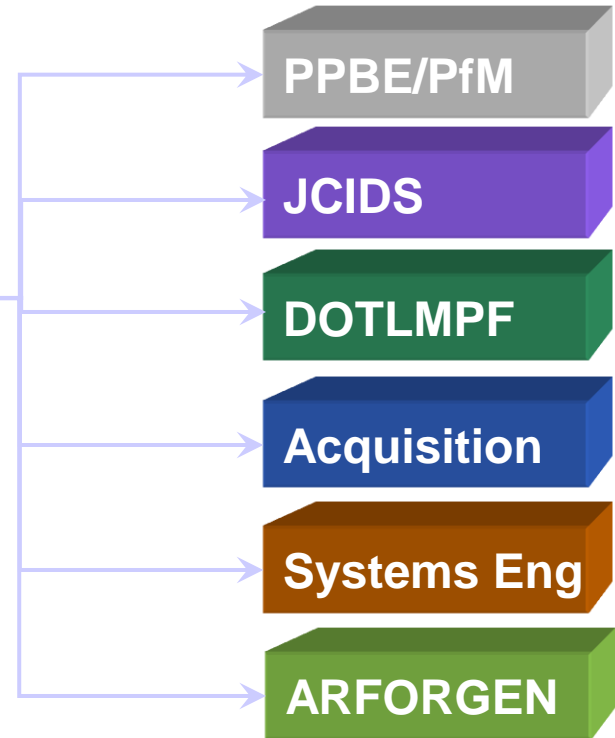
- ✓ Conceptual
- ✓ Enterprise
- ✓ Capability
- ✓ ...

Federated Architectures



E – Enterprise
M – Mission Area
C – DoD Component
P – Program

DoD/Army Core Processes





UNCLASSIFIED

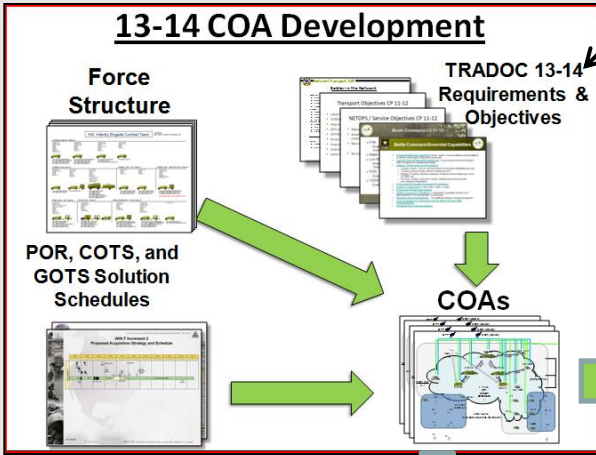
Annual Programmed Plan Refinement

(Supported by Integrated Architectures)

ASA (AL&T)

Capability Gaps

Planning



Proposed Changes to the Planned Program

IBCT BSB - Fwd Spt (FA)

CERDEC

Item	Start	End	Priority	Status
1	2011	2012	High	Complete
2	2012	2013	Medium	In Progress
3	2013	2014	Low	Planned
4	2014	2015	High	Planned
5	2015	2016	Medium	Planned
6	2016	2017	Low	Planned
7	2017	2018	High	Planned
8	2018	2019	Medium	Planned
9	2019	2020	Low	Planned
10	2020	2021	High	Planned

Architecture Updates

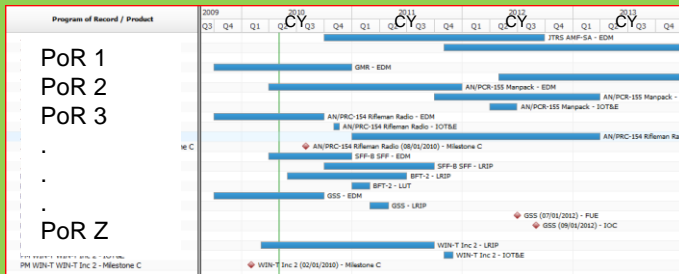
PEOs/PMs WSRs

Army Decisions

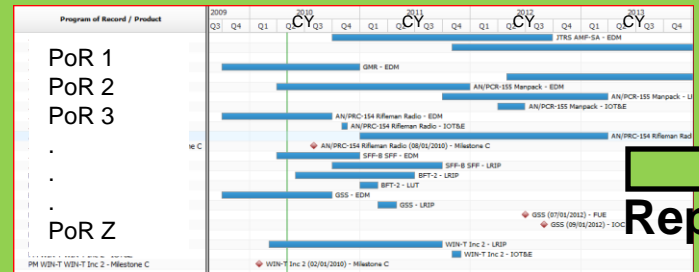
Army Decisions

Program

The Programmed Plan (FY 11-17)



The Revised Programmed Plan (FY 11-17)



Repeat

SoSE

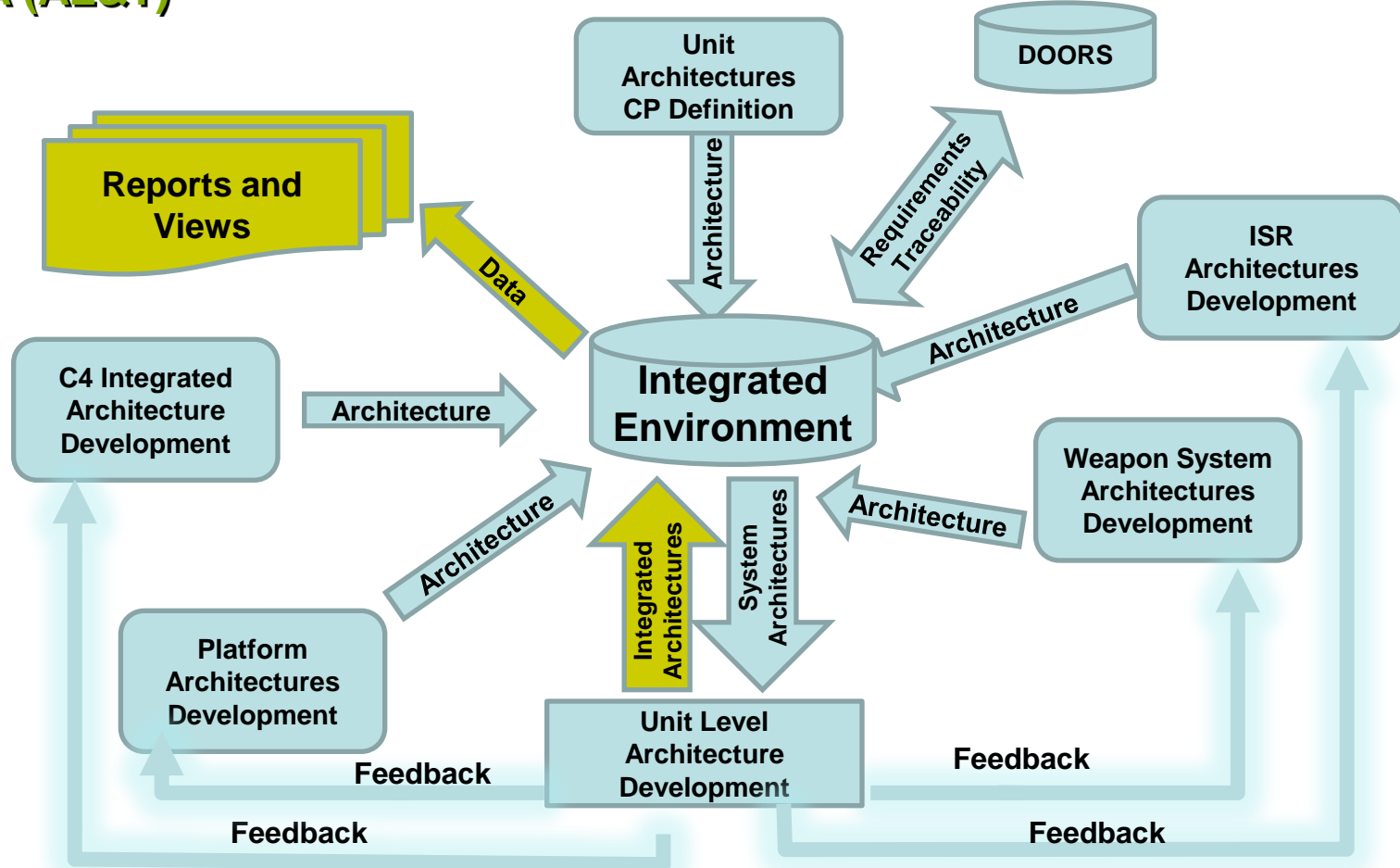
DESIGN * DEVELOP * DELIVER * DOMINATE

UNCLASSIFIED



Integrated Architecture Development Concept

ASA (AL&T)



Working with and across all PEOs

Using integrated systems architectures and analytical tools to perform holistic review of all acquisition portfolios that support the POM process



Architecture Application Schedule

ASA (AL&T)

Annual processes:

- Sept-May: define portfolios and architectures (C4ISR as start point)
 - Portfolio priorities and maturities are different—prioritize initial focus
 - Define interconnects across portfolios
 - Linkage of systems architectures with unit fielding timelines
 - Develop SOS SE Implementation Plan
 - Develop interaction processes between SOSE trades and TRADOC requirements process
 - Incorporates PIPs and obsolescence planning
- June: Cross-portfolio integration
- May-July: SOS trade activities
- Aug: Cross-PEO trade adjudication
- Sept: SoS decision point, SOS WSR preparation
- Oct: SoSE Weapon Systems Review portfolio position & issues
- Jan: SoSE Weapon Systems Review PoR recommended adjustments

In-parallel support to on-going activities:

- Continuous coordination with TRADOC associated with requirements
- CDRT impacts and integration