



DOT&E Targets Perspective

Dennis Mischel

Target Systems Office

d.mischel@osd.mil

703-681-5505 (D) or 703-244-0515 (C)



Office of the Secretary of Defense

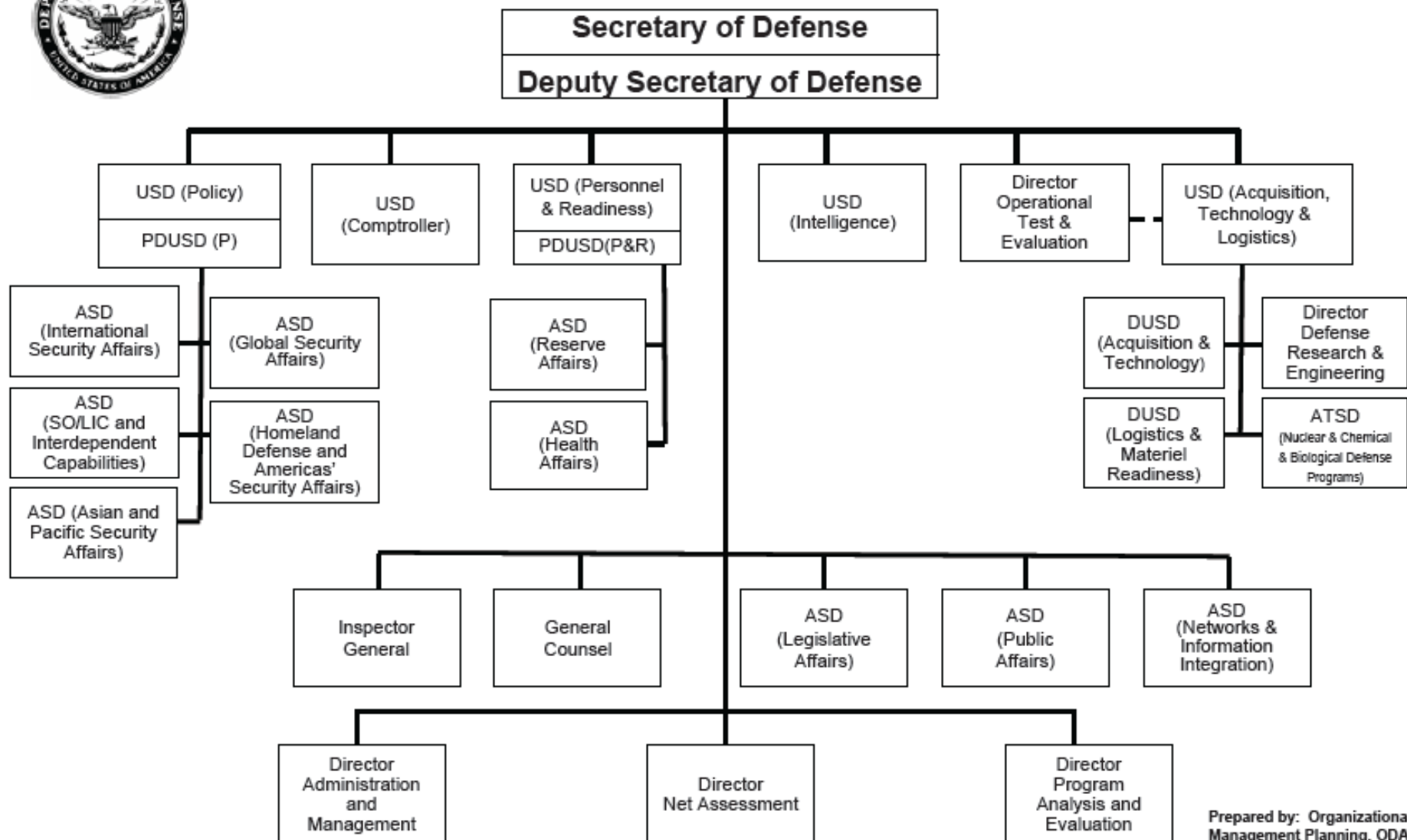


Chart reflects PAS officials and those reporting directly to the Secretary and Deputy Secretary of Defense

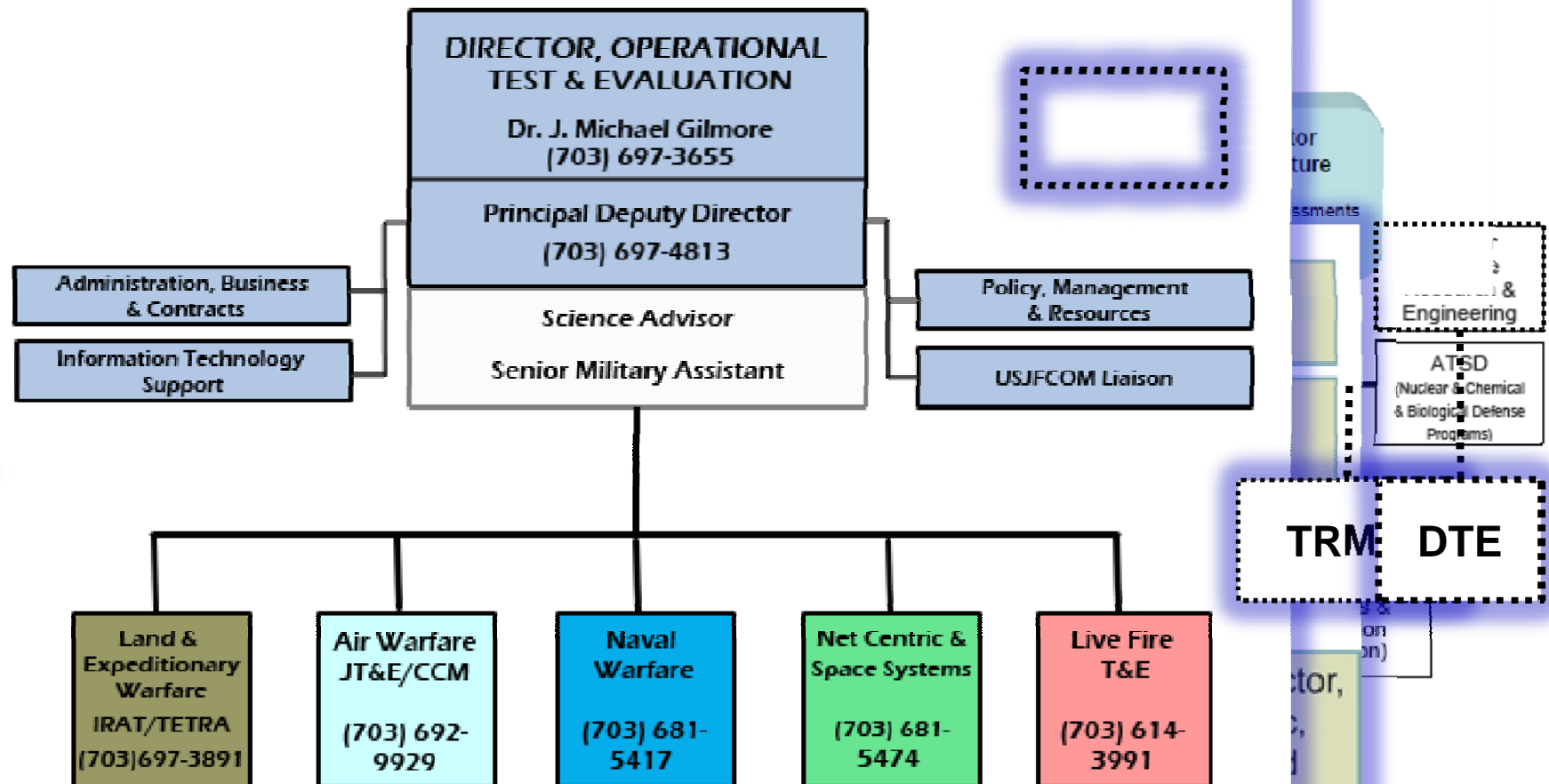
Prepared by: Organizational & Management Planning, ODA&M, OSD
Date: January 2008

So what has changed?



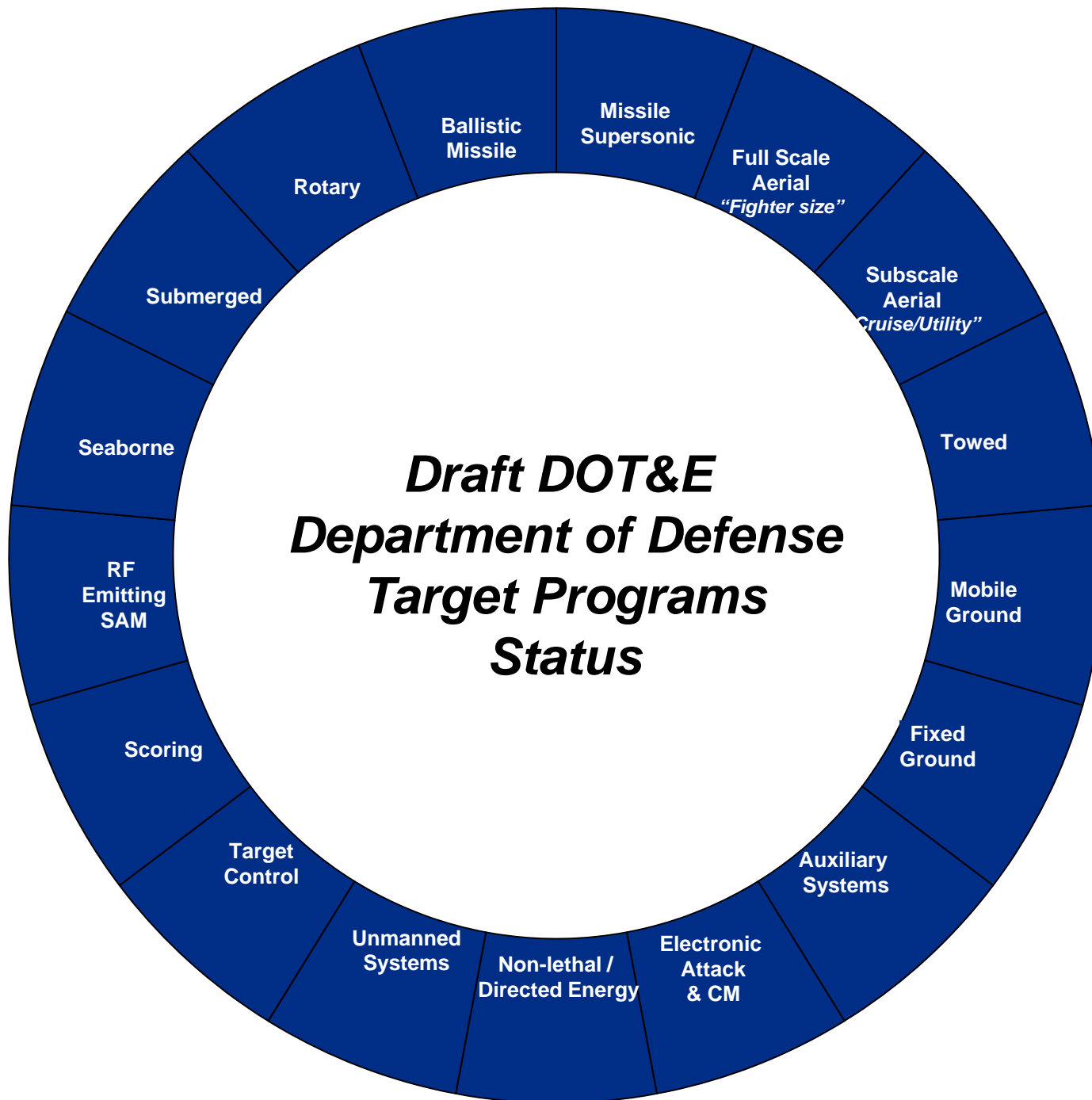
Office of the Secretary of Defense

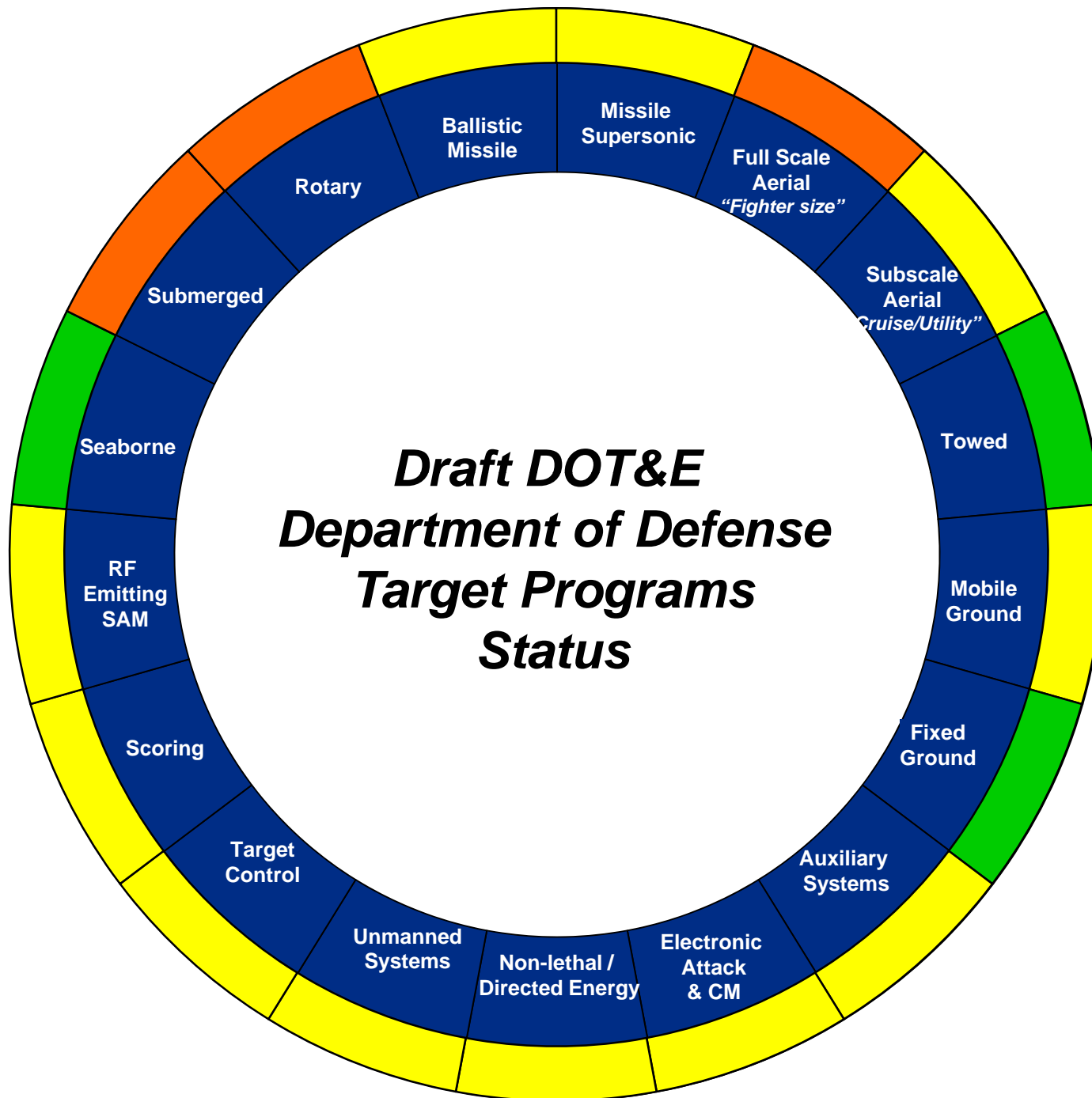
Secretary of Defense

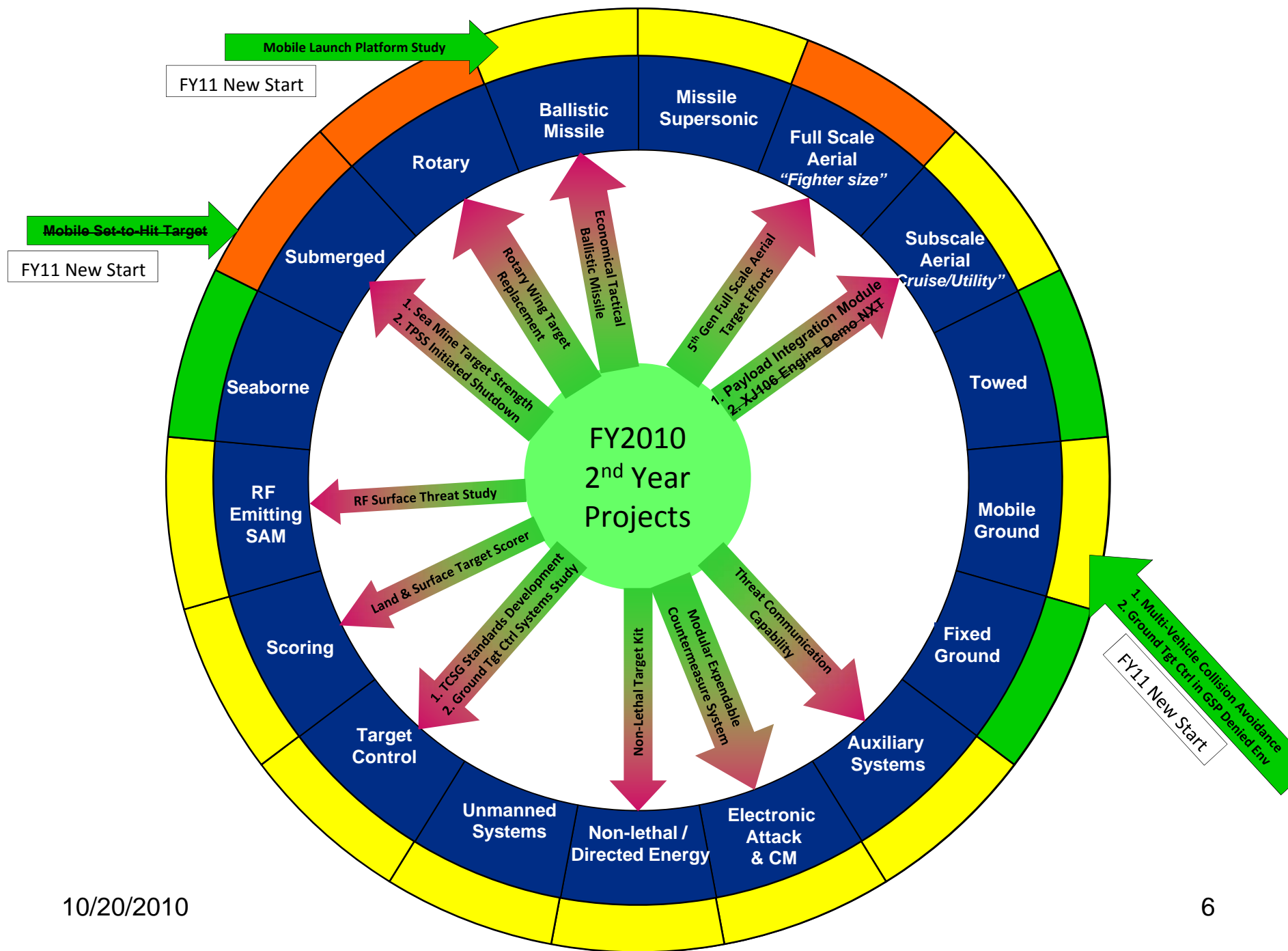


TRM DTE

Prepared by: Organizational & Management Planning, ODA&M, OSD
Date: January 2008







10/20/2010



Director, Operational Test & Evaluation

Target Systems Office

The Future of Targets



Next Generation Targets