



INSENSITIVE HIGH EXPLOSIVES FOR HIGH SPEED PENETRATORS

**Precision Strike Association Annual Review
23 February 2011**

**Jennifer L. Jordan, Ph.D.
Branch Technical Advisor
Lt Ross Stanley
Program Manager
Energetic Materials Branch
Munitions Directorate
Air Force Research Laboratory**



Overview



- **Project Objectives**
- **Challenges**
- **Project Agreement (PA) Status**
- **Roadmap**



Project Objective



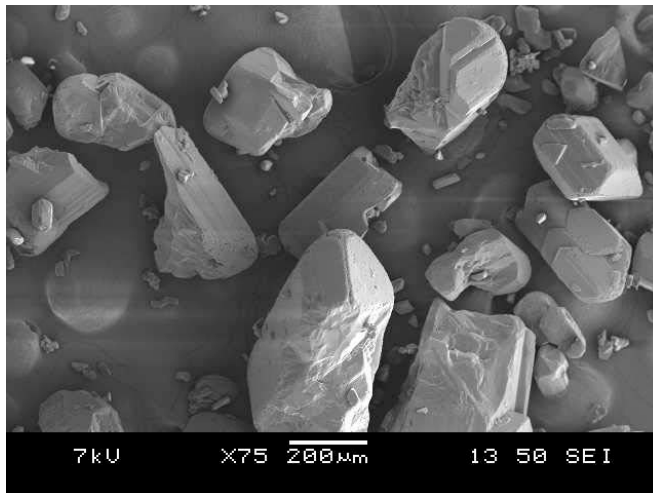
- **Understand the changes in high explosives (HE) due to loading during hard target impact**
- **Develop an experimental characterization protocol for understanding structural changes and sensitivity correlations in HE**
- **Enhance the modeling and simulation capabilities to capture the damage-sensitivity correlations in HE**



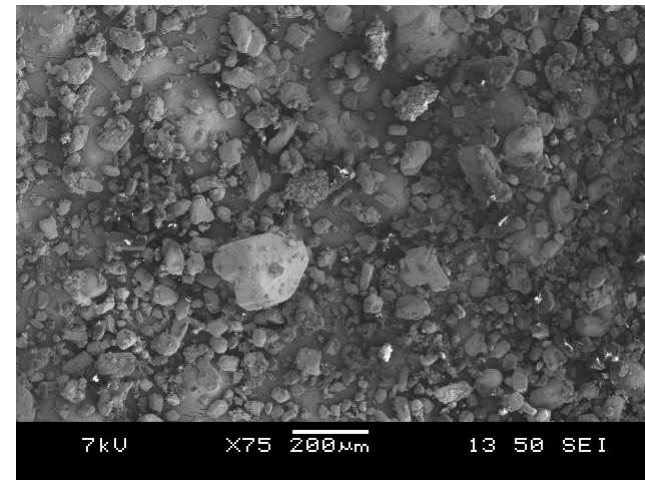
Challenges



- Develop a characterization protocol, including modeling and simulation, for damaging and quantifying the effects of damage in HE
- Quantifying the microstructure associated with pristine and damaged HE
- Perform sub-scale tests on HE to validate protocol and models



HE Crystals prior to Mixing



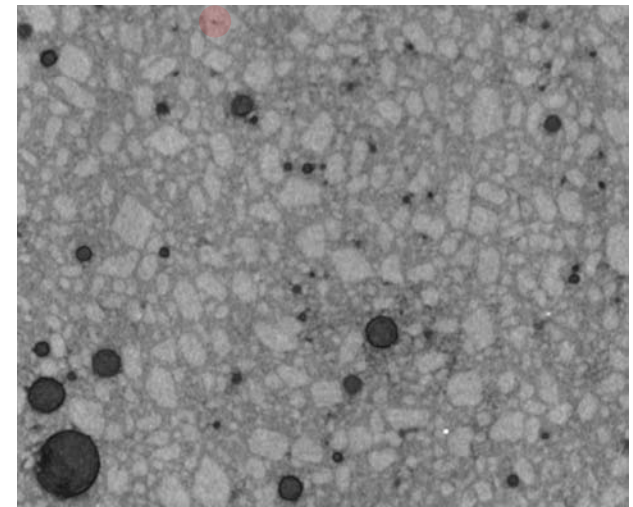
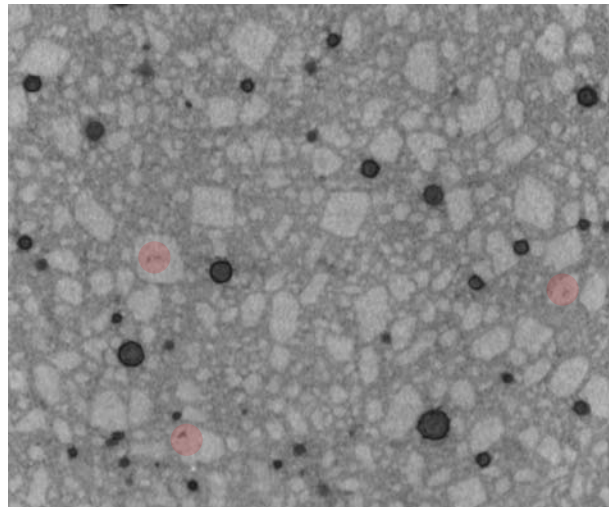
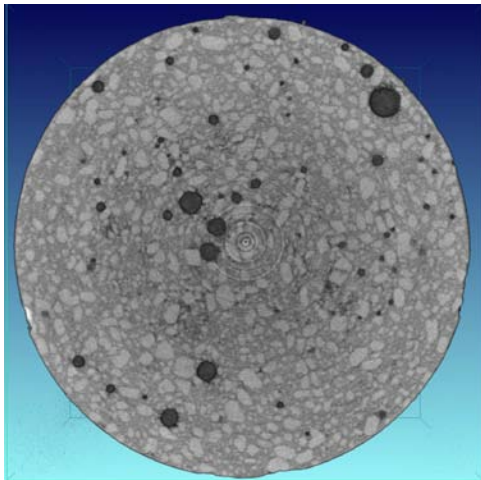
HE Crystals Post Mixing



Status of the Project Agreement



- PA has been in progress for one year.
- Testing of representative HE materials is underway.
- Next interchange meeting is May 2011.





Roadmap



- **Numerical analysis of loading conditions – complete**
- **Support of test design by numerical simulation – complete**
- **Selection of mechanical and thermal loading methods – complete**
- **Laboratory experiments with defined HE samples – underway**
- **Microstructural analysis and sensitivity tests – underway**
- **Numerical simulation of laboratory experiments – underway**
- **Numerical simulation of detonation process**
- **Correlation of thermo-mechanical loading with structural changes**
- **Correlation of micro-mechanical changes with changes in sensitivity**
- **Sub-scale impact tests**



Summary



- **Project Objectives / Challenges**
- **Project Agreement (PA) Status – PA underway**
- **Roadmap**
 - Technical progress being made on characterizing HE and supporting modeling and simulation

