



Developing MCM MP Capabilities Soonest



Enabling the Development of ~~Developing~~ MCM MP Capabilities Soonest



This Is A Team Effort!





Lab Development & Integration Roles



- 65 years of experience in MCM
- Gulf of Mexico Ranges
- MH-60S Detachment
- Facilities



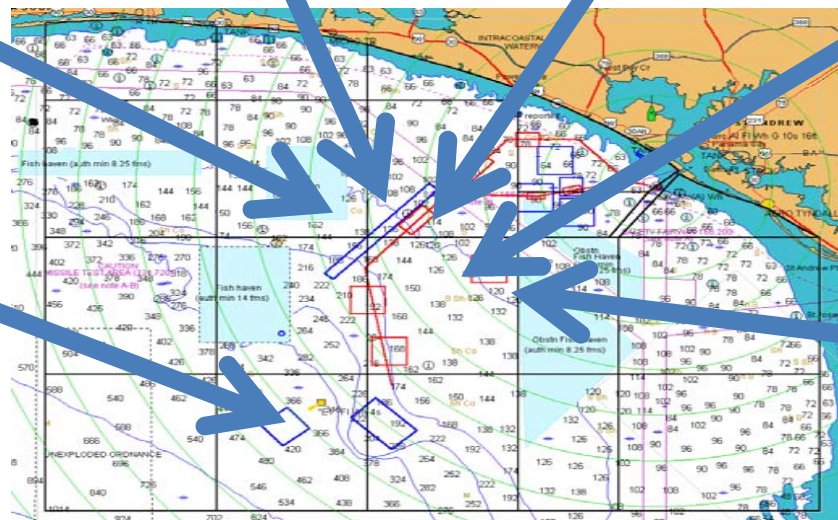
Prototyping

- Unmanned Surface Sweep
- SMCM UUV UOES
- COBRA Blk 2
- SUMMIT
- RFID Tagging
- Mission System Transporters



No Shortage of Good Ideas
Challenge is Getting them to the Fleet Quickly

Test & Evaluation



System Familiarization

- AMCM Continuum
- MCM MP Detachments
 - Classroom Instruction
 - Hands-on Experience During End-To-End and DT
- HX-21/VX-1
 - OAMCM Systems
 - OPMA



Engaging the Sailor Early in the Development Process



Summary

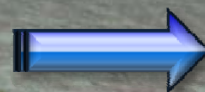
- ✓ This is a Team Effort
- ✓ Got the Sailors Involved Early
- Need to Accelerate “Development To Delivery” Timeline
- Need Enabling Technologies
 - Automation
 - Data to Knowledge
- Get It Right the First Time!
 - Very little time for mistakes
 - Testing to requirements
 - Test discipline
 - Deliver working systems to the Fleet



Mining in Transition



THE
TRANSITION



MR. SCOTT
BURLESON