

# N851 USN NSW Branch

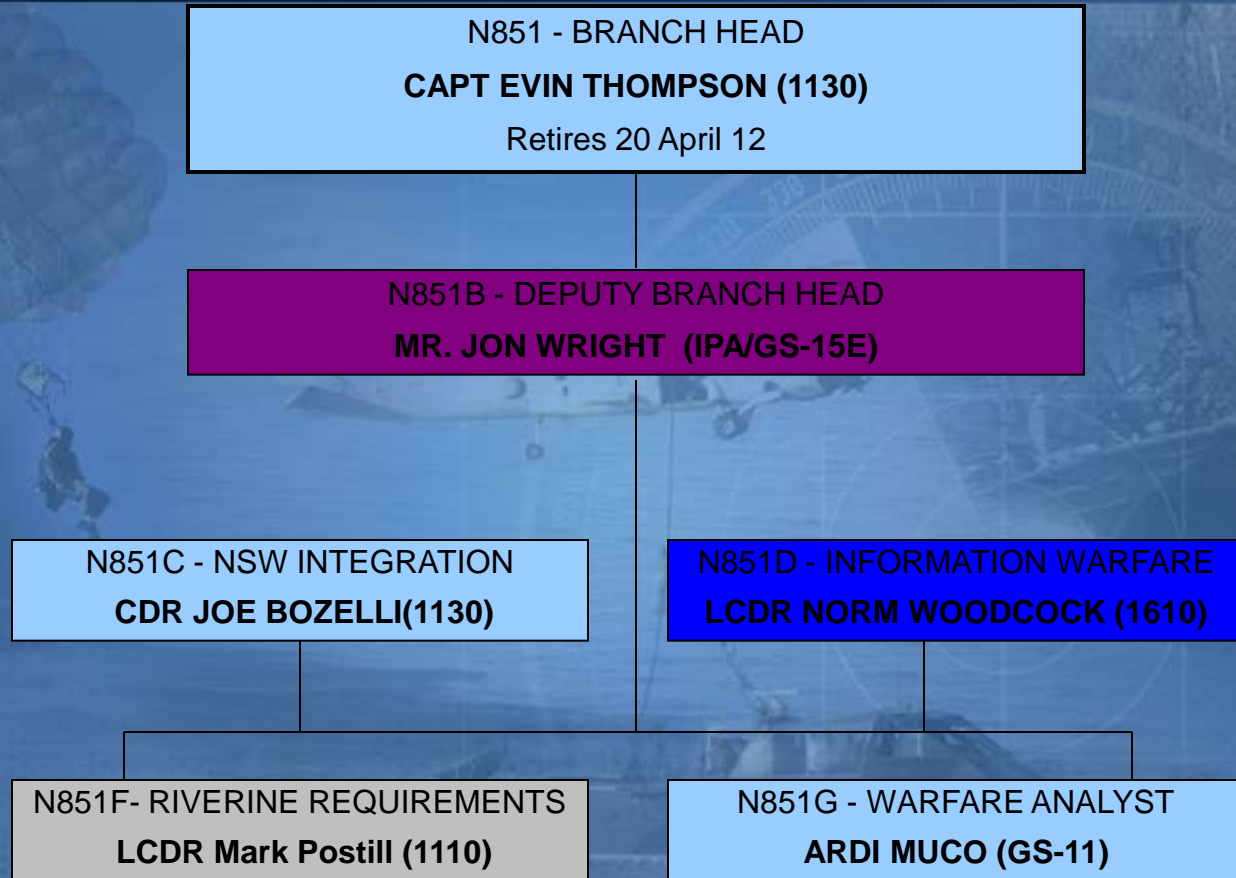
Brief to 16<sup>th</sup> NDIA Expeditionary Warfare Conference



Captain Evin Thompson

27 October 2011

# N851 - Naval Special Warfare Branch



OPNAV  
Billet/Position



NAVSPECWARCOM DET Wash.  
Position



Temp. assignment based  
on an N85B-N2C MOA

# N851 – Primary Responsibilities

- **Resource sponsor for:**
  - Naval Special Warfare (NSW) service common requirements.
  - Navy Riverine Force.
  
- **Senior NSW advocate/advisor on the staff of the CNO.**
  - NSW Urgent Operational Need (UON)/SOF - related Joint Urgent Operational Need (JUON) advocate.
  - Advisor in support of N81 analyses and studies that include or support NSW/SOF equities.
  
- **OPNAV coordinator/advocate for Navy programs that support/involve NSW/ExW. Examples include:**
  - Scan Eagle Unmanned Aircraft System (in support of NSW and USCENTCOM).
  - Small Tactical Unmanned Aircraft System (STUAS).
  - Special Operations Force (SOF) support attributes of future Navy ships.
  - Navy policy for Premeditated Personnel Parachuting (P3) operations.
  - “Naval Solution for Visit, Board, Search and Seizure (VBSS).”
  - Common Seaframe for Navy/SOF
  
- **Represent Commander, NSW Command, as directed, in the National Capital Region.**

# Naval Special Warfare

## *Sustained/Improved Service-Common Support*

SCAN EAGLE UAS



LEGACY TACTICAL COMMS



LEGACY COMBATANT CRAFT



INLAND OPERATIONS



SMALL TACTICAL UAS



COMMON TACTICAL COMMS



COMMON COMBATANT CRAFT

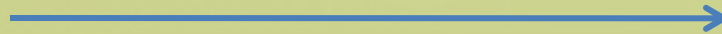


MARITIME/SFA OPERATIONS



- Capability Driven Recapitalization
- Support NSW movement towards SFA
- Ensure NSW compatibility with Fleet assets
- Exploit Navy-SOF system commonality
- Improve tactical ISR capabilities
- Improve Command & Control

*OIF/OEF Centric*



*Post-OIF/OEF Engagement*

# N851 - Major Efforts

- **PB MK VI**
- **IW Enhancements to the SUW Package**
- **STUAS**
- **SE Sustainment and monitoring**
- **Precision Engagement Lethality**



N851 POC: CAPT Evin Thompson, 703-614-2107,



# BACKUPS

# N851 - Top Programs

## ➤ Naval Special Warfare (NSW)

- Provide procurement and sustainment resources for service common capabilities, to include:
  - Small Arms & Weapons Mounts
  - Tactical Communications Equipment
  - Night Vision Equipment
  - Training Support Craft
  - Operational Stocks
  - Planning & Management Support Systems

## ➤ Riverine Activities Program

- Provide procurement resources for initial outfitting, capability improvements and phased replacement for Riverine Group ONE and component Riverine Squadrons ONE, TWO and THREE.
- Achieve Full Operational Capability (FOC) by FY 2010 (with exceptions).
- Support establishment of a “Fourth Riverine Squadron.”

## ➤ Unmanned Aircraft Systems (STUAS) for L-Class ships, NSW and NECC

- Representing N85 equities (NSW, NECC and L-Class ships) in this N2N6 - resourced program.
- Expeditionary Forces require STUAS Tier II vice STUAS – Lite.

## ➤ Procurement/sustainment of Scan Eagle Unmanned Aircraft Systems ISO SOF

- Requested by NAVSPECWARCOM, via UONS, and USCENTCOM, via JUONS for OIF and OEF.
- Capabilities provided by the JUON employed under custody of NAVSPECWARCOM.
- N851 coordinates execution with NAVAIR program office, Task Force ISR, Naval Special Warfare Command, Special Operations Command Central and other involved/interested parties.



# Expeditionary Basing

- LAND Basing
  - Expeditionary Camp
  - Force Protection
  - Civil Affairs
  - Medical
  - Expeditionary Logistics
- SEA Basing
  - High Speed Vessel
  - Landing Ship Dock (LSD)
  - Landing Platform Dock (LPD)
  - Littoral Combat Ship (LCS)
  - Utility Craft



# Combatant craft on ships is not new!



MLP



OSRV



16 Swedish RCBs landing in the LSD 41 class (USS TORTUGA) well deck

Unclassified

# Lessons Learned (Representative)

- All sailors aren't prepared for 'riverine' duty.
- 'You don't know what you don't know.'
- All small craft have payload limitations.
- Need for a robust (non-organic) intelligence collection/ analysis capability.
- Sustained awareness of 'burn rate' of major equipment, based on training usage, environmental factors, etc.
- Timing of personnel assignment with training cycle/deployment rotations.
- Sufficient time to incorporate counter-insurgency/foreign internal defense training into pre-deployment cycle.

Unclassified

# USN Riverine Craft



*Riverine Assault Boat (RAB)*

*Riverine Patrol Boat (RPB)*



*Riverine Command Boat (RCB)*

*Combat Rubber Raiding Craft (CRRC)*



# Fourth (Composite) Riverine Squadron (Alternative)

Composite  
RIVRON  
HQ

Offshore Patrol  
Division  
1 x RCB  
2 x FP-C

Support Division  
C2, VBSS, Medical,  
Maintenance, etc

Inshore Patrol  
Division  
4 x LCS compatible  
Patrol craft



Unclassified

LOA: 15m  
(Actual)

LOA: 20m-22m  
(Notional)

LOA: 11m-12m  
(Notional)

# Riverine Vehicles

*MK 25 MTVR W/ MAS ARMOR KIT*



*UPARMORED HMMWV*



*CAT I*



*CAT II*



*MRAP (Mine Resistant Ambush Protected)*

# Weapons



**M4**



**M9**



**M500**



**M2HB**



**GAU-17**



**MK19**



**M240G**



**MK21**



**MK48**



# NAVAL SPECIAL WARFARE (N851)



## Service Common Capabilities

- Pre-positioned operational stocks
- Visual Augmentation Systems
- Training support craft
- Small-arms and weapons mounts
- Tactical Communications Equipment

## Irregular Warfare (IW)

- Developing Navy IW portfolio investment strategy
- Provide recommendations for Navy unique, risk-mitigating solutions to Joint IW efforts

## Future Capabilities

- Integrate into future Navy capabilities and concept development of unmanned systems
- Provide expertise in development of future Special Warfare service common items





# NSW Scan Eagle UAS

**Mission:** Procured in response to NSW and Joint SOF Urgent Needs, the Scan Eagle UAS is provides Full-motion Video (FMV) intelligence, surveillance, reconnaissance, and targeting support to tactical users.

## ➤ Operational Employment:

- 9 Navy-owned systems
  - 6 x Operational, 2 x training, 1 x Op Spare
- Hub & Spoke Operations (300 hrs/month)
  - Spoke (Forward Control Station) ~100km

## ➤ Equipment:

- Scan Eagle UAS (12 air vehicles per site)
- Ground Control Stations, Launch/ Recovery, Pack-up & Maintenance kits, Ops/Maintenance Shelters

## ➤ Operational Overview

- IOC: Nov 08 (OIF), Aug 09 (OEF)
- OIF (as of 30 Sep 09):
  - Sorties: 346
  - Total Flight Hrs: 1847 hrs
- OEF (as of 30 Sep 09)
  - Sorties: 58
  - Total Flight Hrs: 450 hrs

## ➤ Rapid Development Deployment (RDD) – Special Payload Efforts

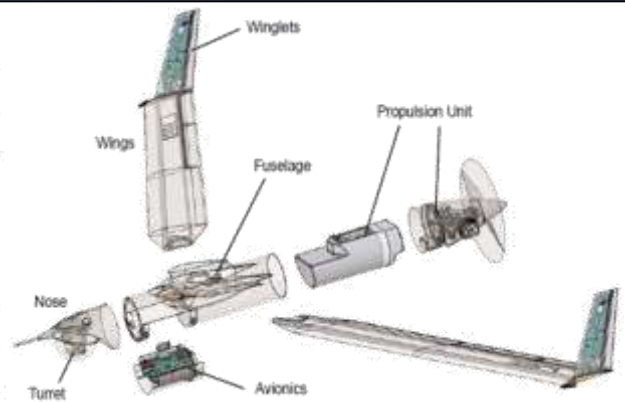


### Performance

Max Level Speed	70 knots	36 m/s
Cruise Speed	49 knots	25 m/s
Service Ceiling	16,400 ft	5000 m
Endurance	15 hours	15 hours

### Dimensions

Wing Span	10.2 ft	3.1 m
Fuselage Diameter	7.0 in	0.2 m
Length	3.9 ft	1.2 m



Scan Eagle UAS is an interim capability until fielding of STUAS Program of Record ~4Q FY13

# Riverine Assault Boat (RAB)

## Characteristics

Hull Type	High-grade Aluminum Rigid
Length	33 ft
Beam	9 ft
Draft	2 ft
Crew	7
Passengers	-
Twin Diesels w/Water Jets	Yes
Top Speed: full load	30 knots - cruise 40 knots - sprint
Range	250 nm
Fuel Capacity	250 gallons
C-130 Transportability	No
Combat Load	20, 500 lbs.
Bow Door/Ramp	No
Weapons Foundations	Multiple



Unclassified

# Riverine Patrol Boat (RPB)

## Characteristics

Hull Type	High-grade Aluminum Rigid
Length	39 ft
Beam	10 ft – 2 in
Draft	2 ft
Crew	5
Passengers	8
Twin Diesels w/Water Jets	Yes
Top Speed: full load	35 knots - cruise 38 knots - sprint
Range	275 nm
Fuel Capacity	300 gallons
C-130 Transportability	No
Combat Load	22, 800 lbs.
Bow Door/Ramp	Yes
Weapons Foundations	Multiple



Unclassified

# Riverine Command Boat (RCB)

## Characteristics

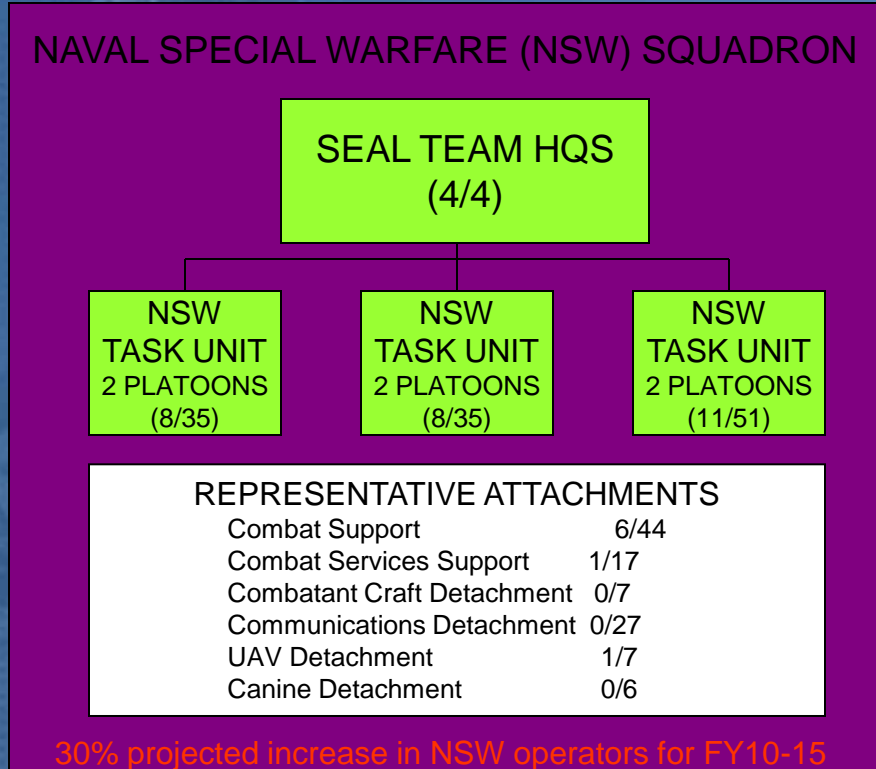
Hull Type	High-grade Aluminum Rigid
Length	49 ft
Beam	12 ft – 5 in
Draft	3 ft
Crew	4
Passengers	26
Twin Diesels w/Water Jets	Yes
Top Speed: full load	40 knots - cruise 45 knots - sprint
Range	>320 nm
Fuel Capacity	300 gallons
C-130 Transportability	No
Combat Load	40,000 lbs.
Bow Door/Ramp	Yes
Weapons Foundations	Multiple



Unclassified

# Naval Special Warfare

## Navy Service Common Support Rationale



Night Vision Equipment



Current Inv: ~47%

Req: 6500  
Inv: 2900

Operational Stocks



Current Inv: ~85%

Req: 5  
Inv: 4.5

Comms/Electronics



Current Inv: ~25%

Req: 7200  
Inv: 1760

Small Arm/Weapons Mounts



Current Inv: ~50%

Req: 8800  
Inv: 4500

**SERVICE COMMON GEAR AVAILABILITY**

OBJECTIVE

PR11

POM10

PRE-POM10

Professional Development

- Language School
- Breacher
- Sniper
- HRST/DIVE SUP/RSO

Unit Level Training

- Land Warfare
- CQC
- MOUT
- MAROPS
- Mobility
- Combat Diving
- Air OPS

Squadron Integration Training

- SWCC, AIR, SEALs
- Full mock-up Combat training.
- Certification Exercises/Evaluations

Deployment

- Global presence

NSW Squadron Cycle (24 MOS)

\$345M Requested (POM10)

\$345M Approved (PR11)

# N85 - Naval Special Warfare Relationship

- **United States Special Operations Command (USSOCOM) has service-like responsibilities to plan, program, budget and execute resources for Special Operations (SO) – peculiar support, services and equipment.**
- **Military Departments have support responsibilities to plan, program, budget and execute resources for service common capabilities for Special Operations Forces (SOF). Principal guidance is provided by:**
  - Title 10, United States Code, Sections 165, 167.
  - DOD Directive 5100.1; Functions of the Department of Defense and Its Major Components.
  - Memorandum of Agreement – Department of the Navy and USSOCOM.
- **N85 is OPNAV's principal advocate and resource sponsor for the Navy component of USSOCOM - Naval Special Warfare (NSW) Command.**
  - Other NSW (resource) sponsors on the OPNAV staff include:
    - N86 – Chem/Bio equipment, Small Tactical Unmanned Aircraft System (STUAS), SOF support attributes on future surface combatants.
    - N88 – Navy helicopter flight hours in support of NSW.
    - N87 – SOF support attributes onboard Navy submarines.
    - N6F – **Some** service common portable radios and electronics required by NSW (and NECC's Riverine component).
- **During each POM and PR cycle, N85 considers requests submitted by Commander, Naval Special Warfare Command for sustained and/or increased service common resourcing support.**

# Naval Special Warfare

## Capability Description

➤ Naval Special Warfare (NSW) forces conduct special operations in support of Joint Force and Navy commanders. Examples include, but aren't limited to:

- *Direct Action*
- *Special Reconnaissance*
- *Foreign Internal Defense*
- *Counter-terrorist Operations*

➤ NSW Forces have been deployed to OEF since 2001 and OIF since 2003.

➤ Navy is responsible for providing resources to support NSW *service common* capabilities/sustainment.

➤ Categorization: Navy - only program (*SOCOM interest*)

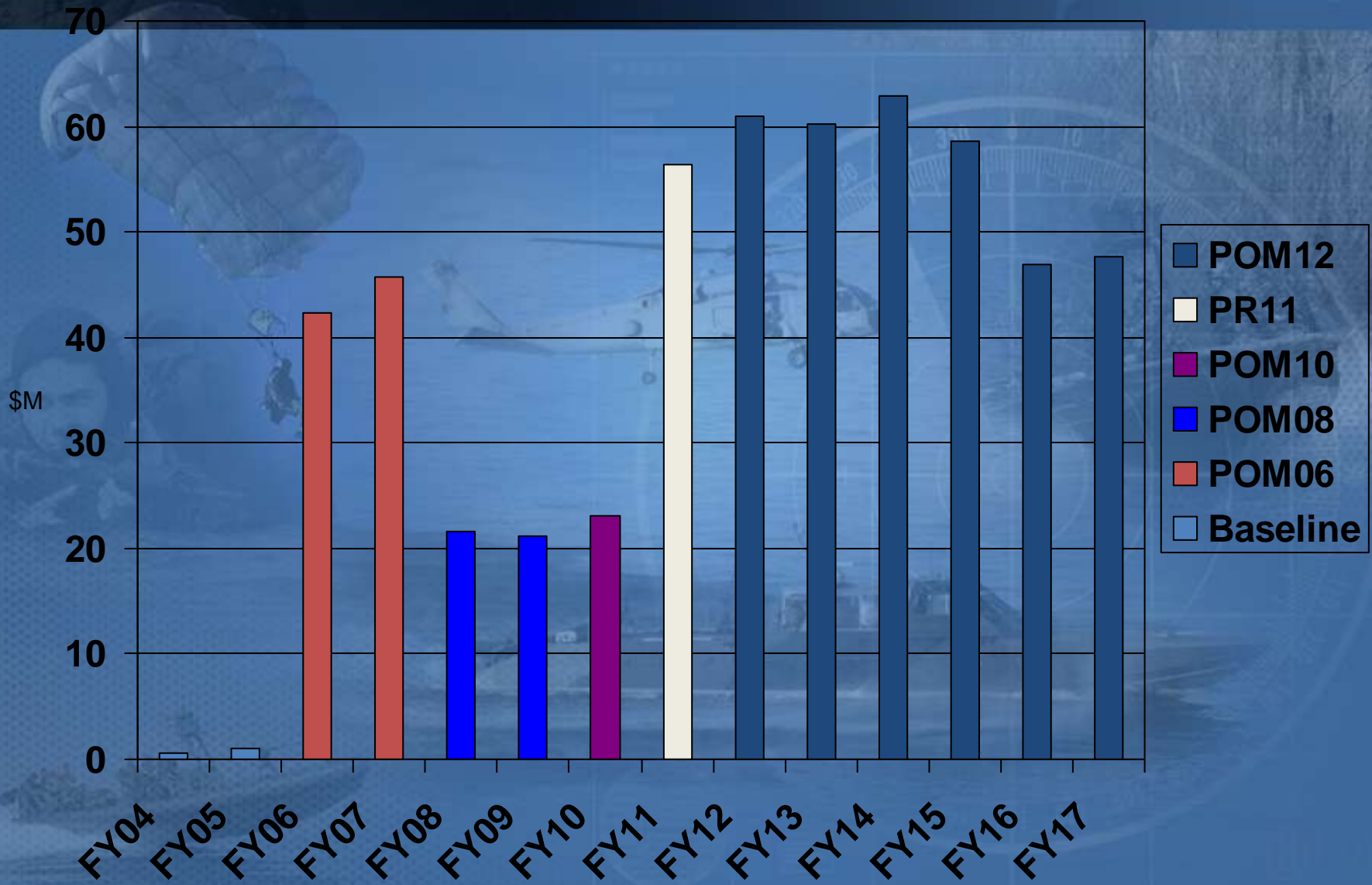
- *N85 - Principal resource sponsor; responsible for (most) NSW service common procurements/sustainment (OMN, OPN, WPN). [N6F was responsible for resourcing NSW service common portable radios (OPN); resources now in N85.]*
- *N86 - Responsible for resourcing NSW service common Chemical, Biological, Radiological Decontamination Equipment (CBRDE) and Small Tactical Unmanned Aircraft System (STUAS) capabilities (OMN, OPN, APN).*



USSOCOM - Resource sponsor for all *Special Operations peculiar* capabilities/sustainment, capability improvements and all NSW ammunition.

# N85 RESOURCE SUPPORT TO NAVAL SPECIAL WARFARE

(Source: N851, as of March 2010)





# Riverine Activities

## Capability Description

- Operational Riverine Force components (Riverine Squadrons) are organized, trained and equipped to conduct maritime security operations and theater security cooperation missions along inland waterways. Examples include, but aren't limited to:
  - *Patrol*
  - *Interdiction/Visit, Board, Search, Seizure*
  - *Troop transport*
  - *Foreign Internal Defense*
- N851 has been managing initial outfitting resourcing of the Riverine component of NECC since late FY05.
- Riverine Squadrons have been deployed to OIF since March 2007.
- Categorization: Navy - only program
  - *N85 - Principal resource sponsor; responsible for procurement resources (OPN, WPN, PANMC, RD TEN)*
  - *N2N6 - Responsible for resourcing portable radios (OPN)*
  - *N43 - Responsible for resourcing readiness funding (OMN)*
  - *N86 - Responsible for resourcing CBRDE (OPN, OMN)*



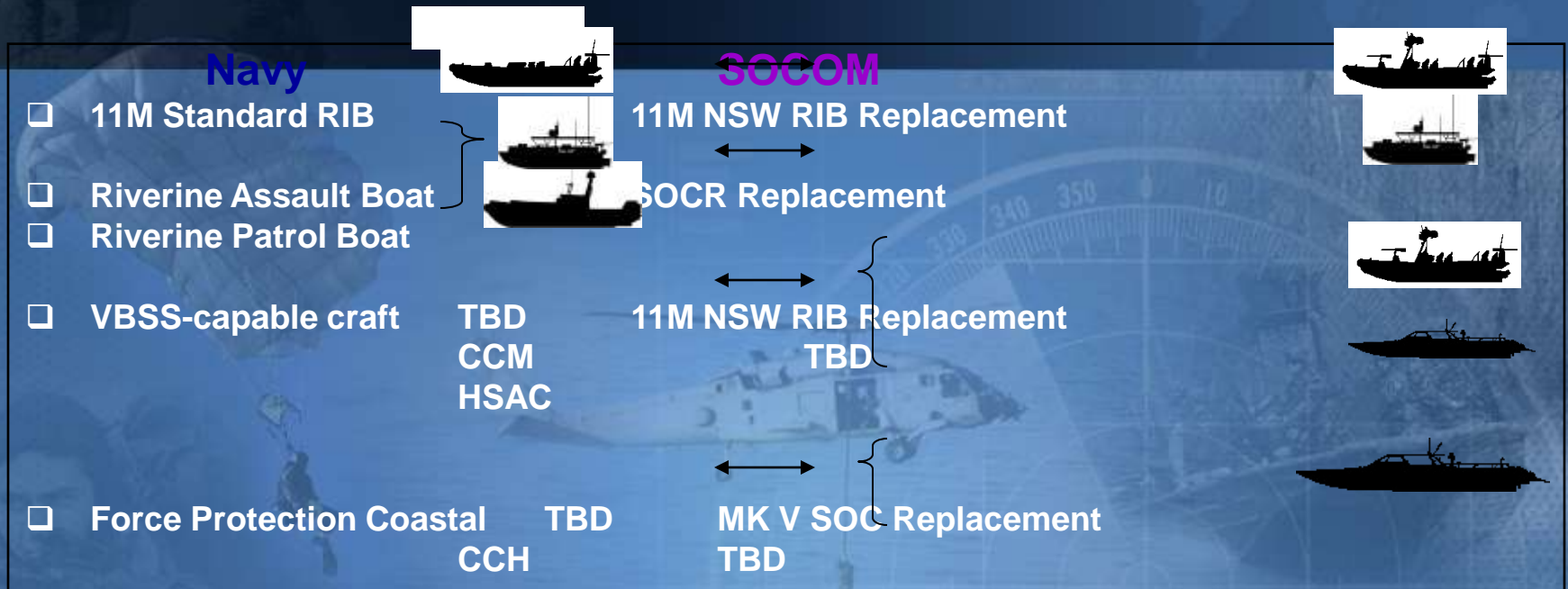
# Riverine Force OIF Activities

<i>River/Lake Security Patrols</i>	<b>923</b>
<i>Quick Response Force missions</i>	<b>100</b>
<i>Riverine Convoy missions</i>	<b>689</b>
<i>Shoreline sweeps</i>	<b>354</b>
<i>Joint operations conducted</i>	<b>240</b>
<i>Iraq Security Force Patrols</i>	<b>245</b>
<i>Detainees screened</i>	<b>389</b>
<i>Boats impounded</i>	<b>76</b>
<i>Weapons caches found</i>	<b>142</b>
<i>Combined operations conducted</i>	<b>156</b>
<i>Unmanned aircraft hours flown</i>	<b>667</b>
<i>Aircraft control hours</i>	<b>268</b>
<i>Iraqi River Police trained</i>	<b>217</b>
<i>Partnership training (Mandays)</i>	<b>3501</b>
<i>Key Leader engagements</i>	<b>165</b>
<i>Allocations of micro grants (\$K)</i>	<b>111</b>



Unclassified

# Future Navy - SOCOM Common Combatant Craft Possibilities



## Current Navy - SOCOM Combatant Craft Commonalities

- ✓ Navy's Riverine Assault Boat and SOCOM's SOCR (they are the same craft)
- ✓ Small arms, weapons mounts and ammunition
- ✓ Tactical communications equipment
- ✓ On-board sensors (Electro Optic/InfraRed systems)
- ✓ Individual visual augmentation systems
- ✓ Chemical-Bio protective/decontamination equipment
- ✓ (Tier I) Unmanned Aircraft System (Puma All Environment Capable Vehicle)

# What N851 Needs from Industry

- Lighter weight body armor
- Lighter weight modular/removable vehicle & boat armor
- Improved anti-corrosive coatings for weapons
- Batteries with higher power densities and lighter weight
- Tools to aid with concealment of people and equipment
- Portable translation devices and even better, ability to manage pools of vetted native speakers that can be tapped into
- (N2N6/CT Support) Data mining tools that can reach