



WBB CONSULTING
Solutions and Support for a Changing World

NDIA Symposium Targets, UAVs & Range Operations

Range Encroachment Defense



October 26, 2011

Steve Shegrud
Whitney, Bradley & Brown
703-448-6081 ext. 263
sshegrud@wbbinc.com



Current Encroachment Issue

How TARAT Is Helping DoD / DoN



Notional Wind Turbine Placement

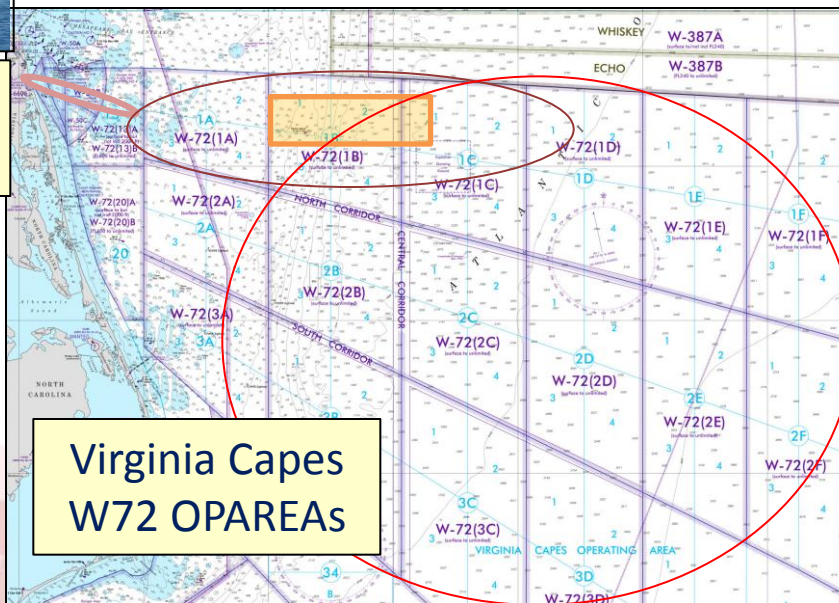
Encroachment Issue

- VA Task Force wants wind farms in close to Norfolk power grid
- USN wants wind farms further out to lessen impact on training



OPAREA Usage Example: Ship Missile Exercise

- Drone Launch/Transit
- Drone Tracking Area
- Missile Hazard Pattern



Virginia Capes W72 OPAREAs

What is the full 'impact' on DoD / Services for test and training events?
DOD / DoN need a better range encroachment defense to show the full impact to T&E and Fleet Training if certain OPAREA grids are lost or availability is reduced...

Coastal and Marine Spatial Planning (CMSP)



THE WHITE HOUSE COUNCIL ON ENVIRONMENTAL QUALITY

*Final Recommendations
Of The
Interagency Ocean Policy
Task Force
July 19, 2010*



- CMSP above all is **ecosystem**-based
- National policy driven; **regional** focus
- NOAA-White House Council on Environmental Quality **culture**
- Navy strategy must ensure strong and convincing analytic representation of Navy's national security equities (e.g., operating sonar in littorals, etc.) and persistently challenge any measures which may restrict valid T&E or Fleet Training, sensor employment or other operational requirements
- Navy-Marine equities **need stronger metrics-based analysis** against this new scientifically-based culture



Data Needed to Defend Range From Encroachment

Identify Hazardous Activity in OPAREAs

- Ship events
- Submarine events
- Low flying aircraft events
- Aerial targets (subsonic, supersonic)
- Seaborne targets
- UW targets
- HM sled-dragging events
- Ordnance (live or inert) expended, dropped, launched
 - Ships & Submarines
 - Aircraft
 - USCG
 - NASA
 - USMC Air
 - USAF
 - USA
 - Other / DOD

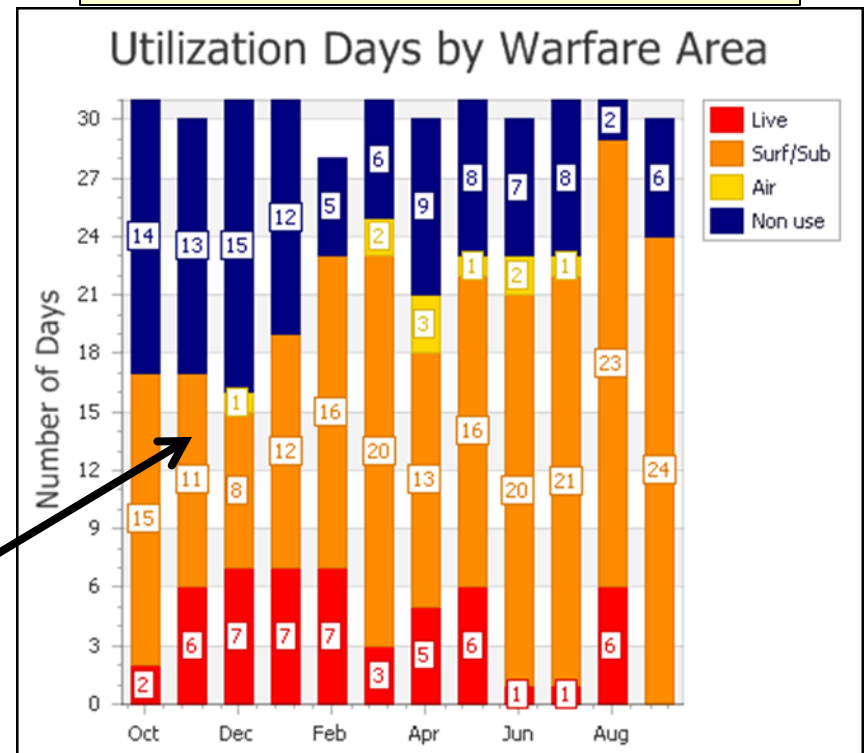
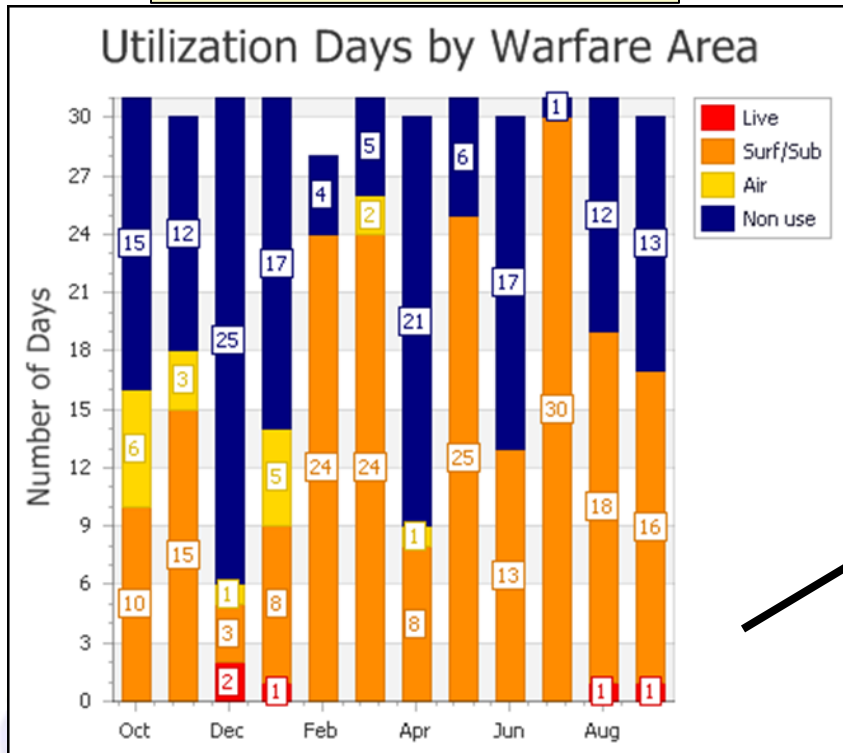
Link event data with hazardous activity – Display by OPAREA Grid

W122 (5) Utilization Side-by-Side Comparison

Dashboard Report after partial data integration effort (Sep11)

TARAT with TRIMS & SHARP
Data - FY09 Data

TARAT with TRIMS, SHARP, NAVSKED, TRMS
& TORIS Data – FY10 Data



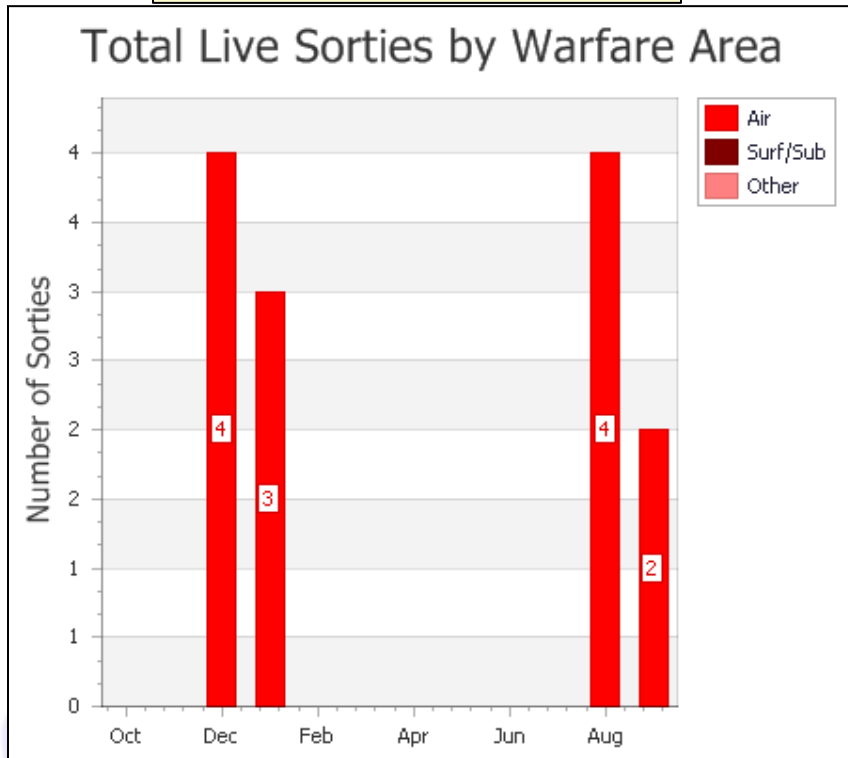
Usage curve increases from FY09 to FY10 with additional data sources

- Improvements over initial dashboard reports (less 'Blue' or 'No Use' days)
- 'Ship Events' will significantly increase with identified additional data

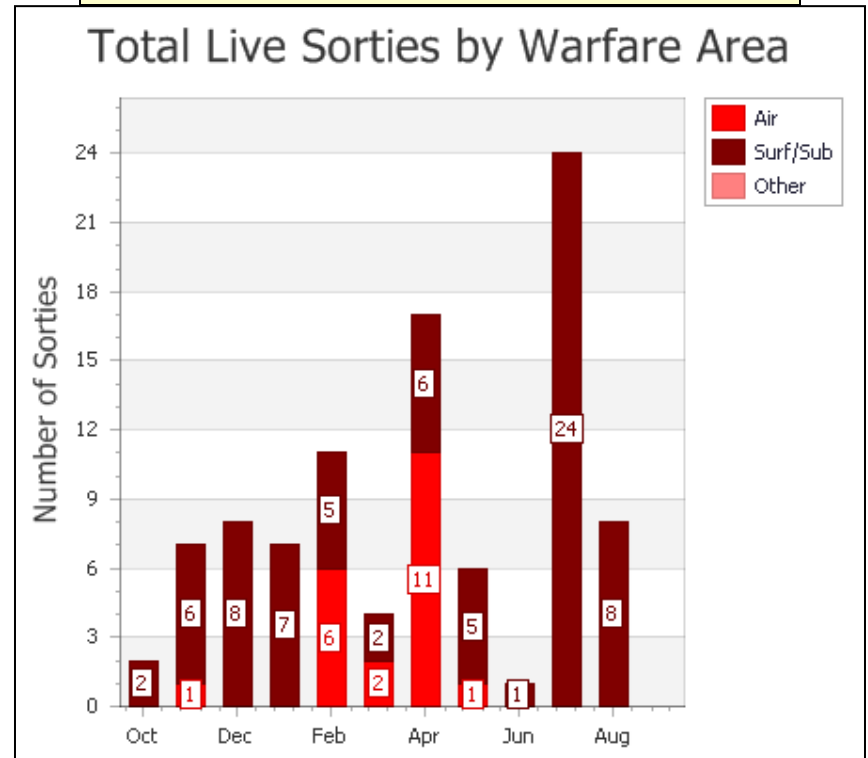
W122 (5) Ordnance Expended Side-by-Side Comparison

Dashboard Report after partial data integration effort (Sep11)

TARAT with TRIMS & SHARP
Data - FY09 Data



TARAT with TRIMS, SHARP, NAVSKED, TRMS
& TORIS Data – FY10 Data

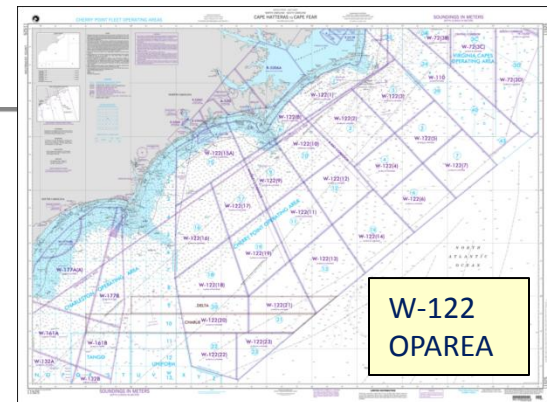
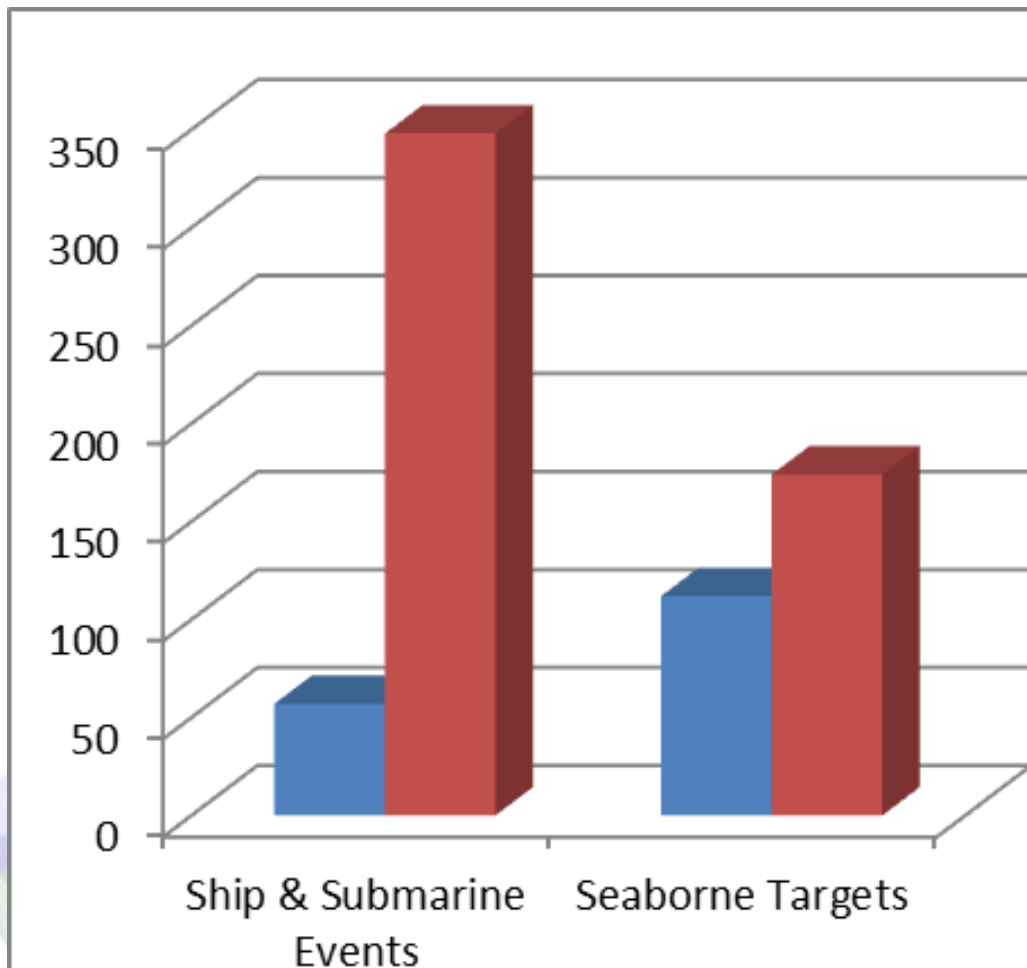


- Improvements over initial dashboard reports
- 'Ship Ordnance Expended' will slightly increase in TARAT with integration of USFF ATR data; will significantly increase with NOLSC data



Decisions Being Made With Incomplete Data

Ship Events & Seaborne Target Utilization



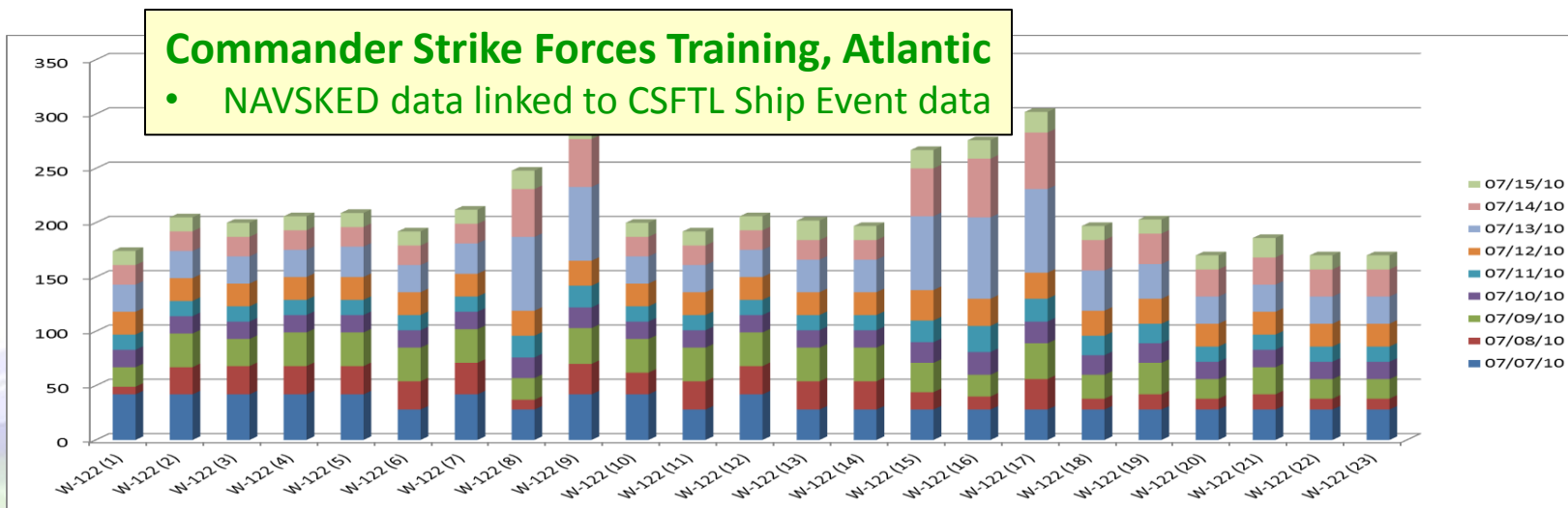
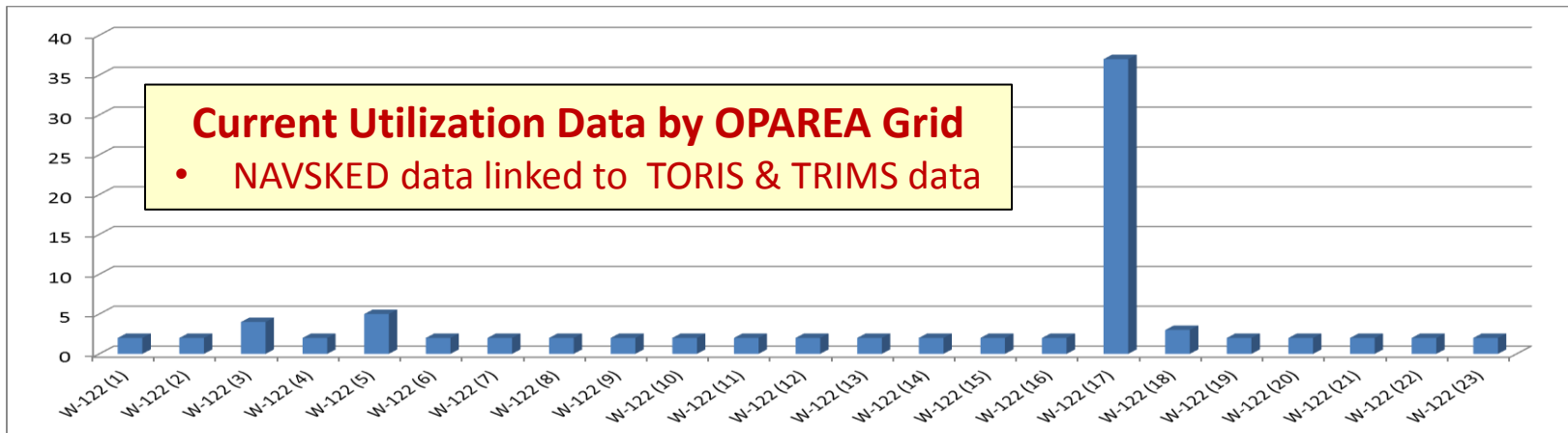
- Jun07-Sep10 (40 months)
USFF TRIMS Data Ship
Events W122
- 7Jul10 - 15Jul10 (9 Days)
CSFTL Exercise Event Data
Ship Events W122

Decision Quality Data Needed & Not Available



W122 OPAREA Grid Use (7Jul10-15Jul10)

USS KEARSARGE Expeditionary Strike Group Exercise

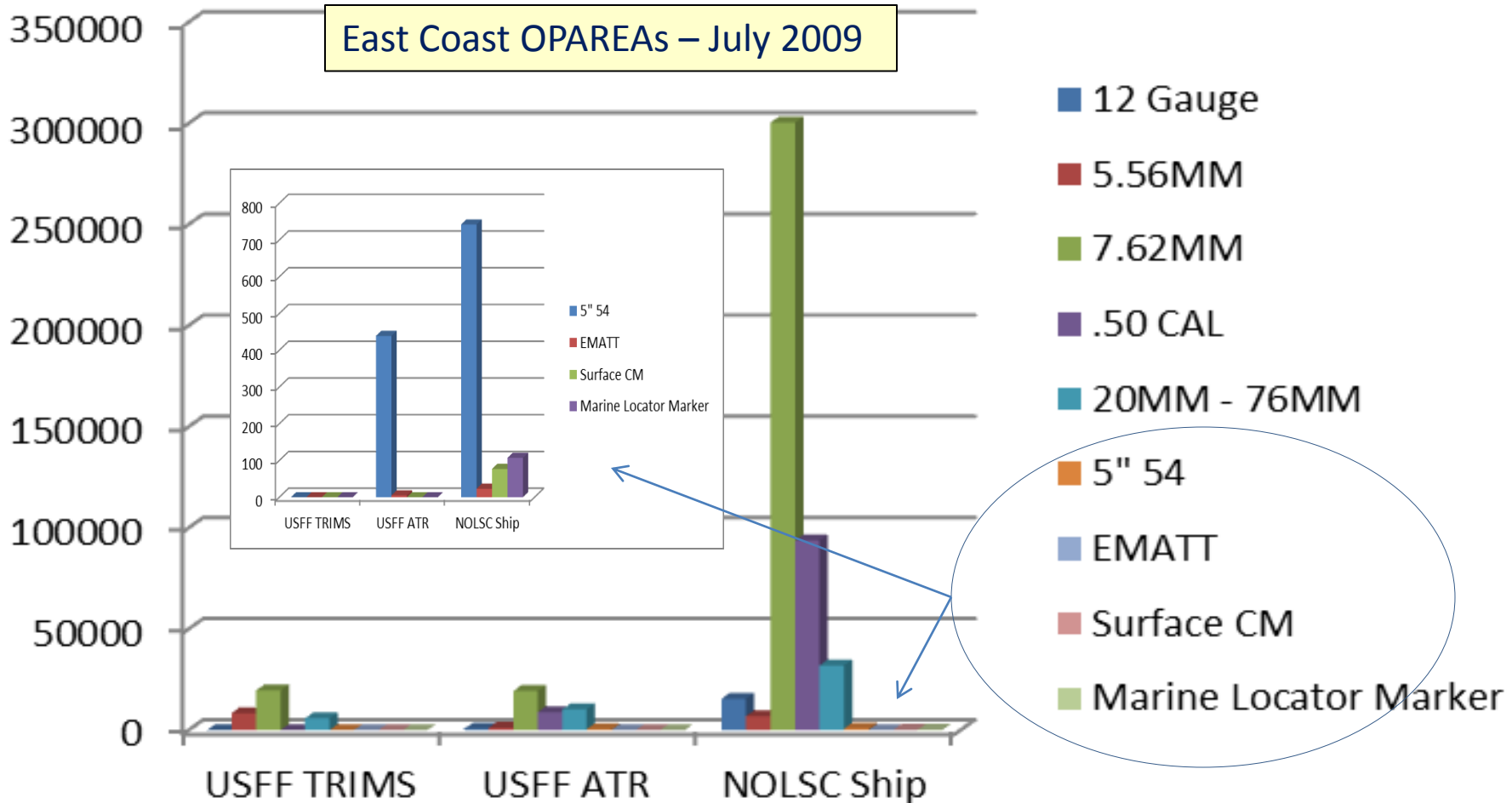


- USFF TRIMS records average of 4 ship events per grid over 9 days
- Exercise records average of 212 ship events per grid over 9 days



Ship Ordnance Expended Data on LANT OPAREAs

Comparison From Separate Databases

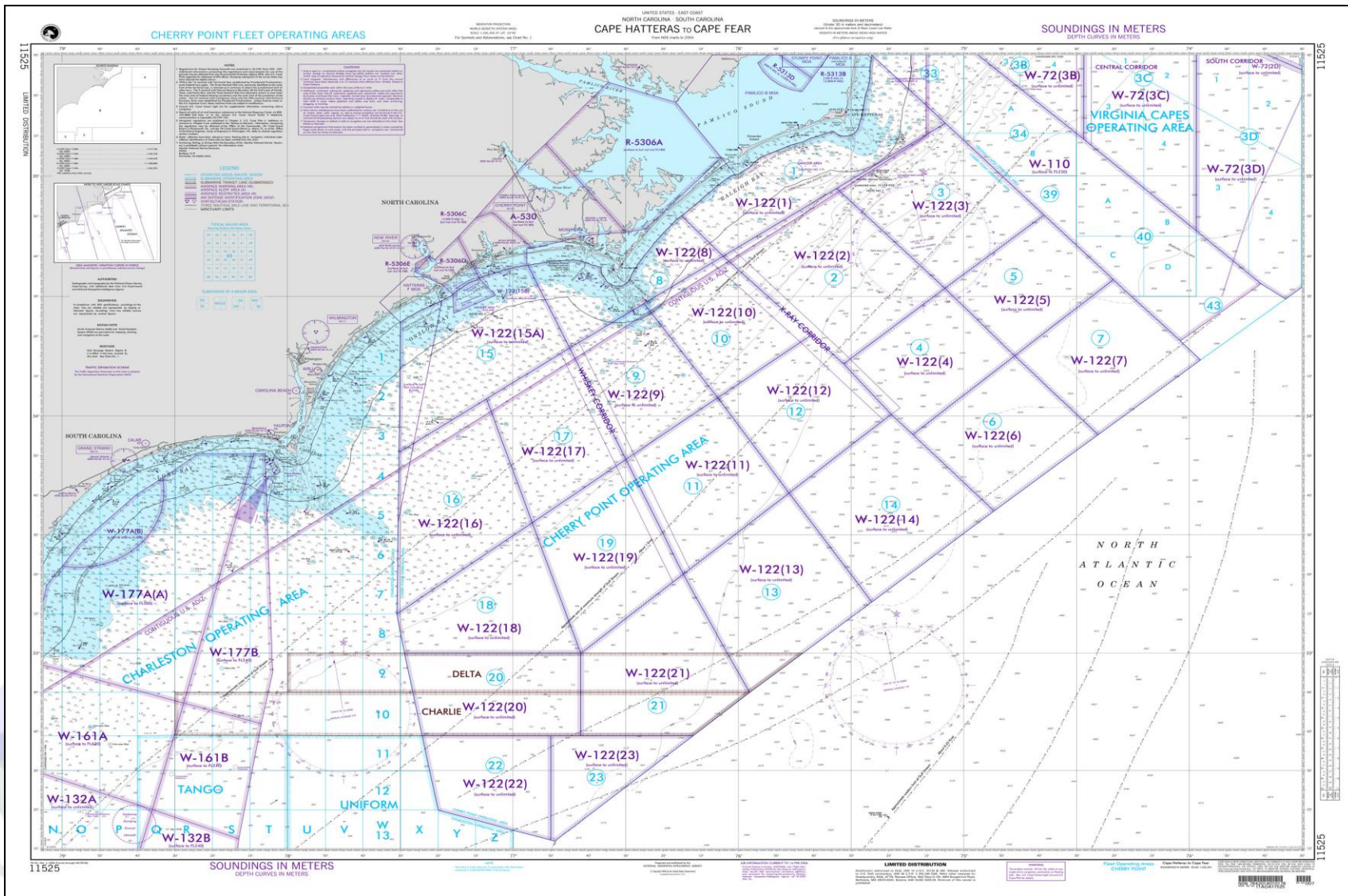


Ship Ordnance Expended Data will improve encroachment defense for DOD/DoN

- TRIMSV & USFF ATR slightly improve ship ordnance expenditure data (only record ~9%)



Questions





N433 Range Sustainment Project

Concept & Objectives

Project Concept:

- Quantitatively determine Navy range complex contribution to readiness & better understand the linkages between readiness, range use and cost
- Link above data in an automated, sustainable & repeatable process
- **Improve DOD / DoN range encroachment defense**

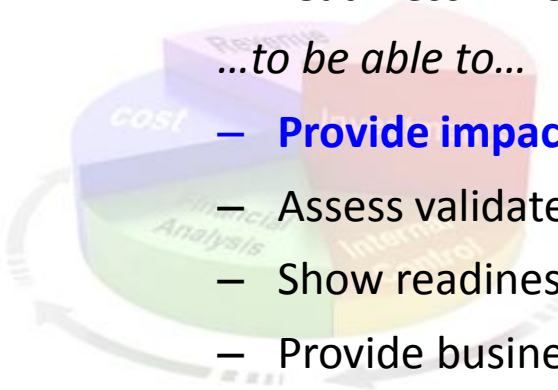
Objectives:

Do the following...

- Align existing cost, readiness & utilization databases
- Create an assessment tool with reports to display range contribution to fleet readiness linked to utilization and cost

...to be able to...

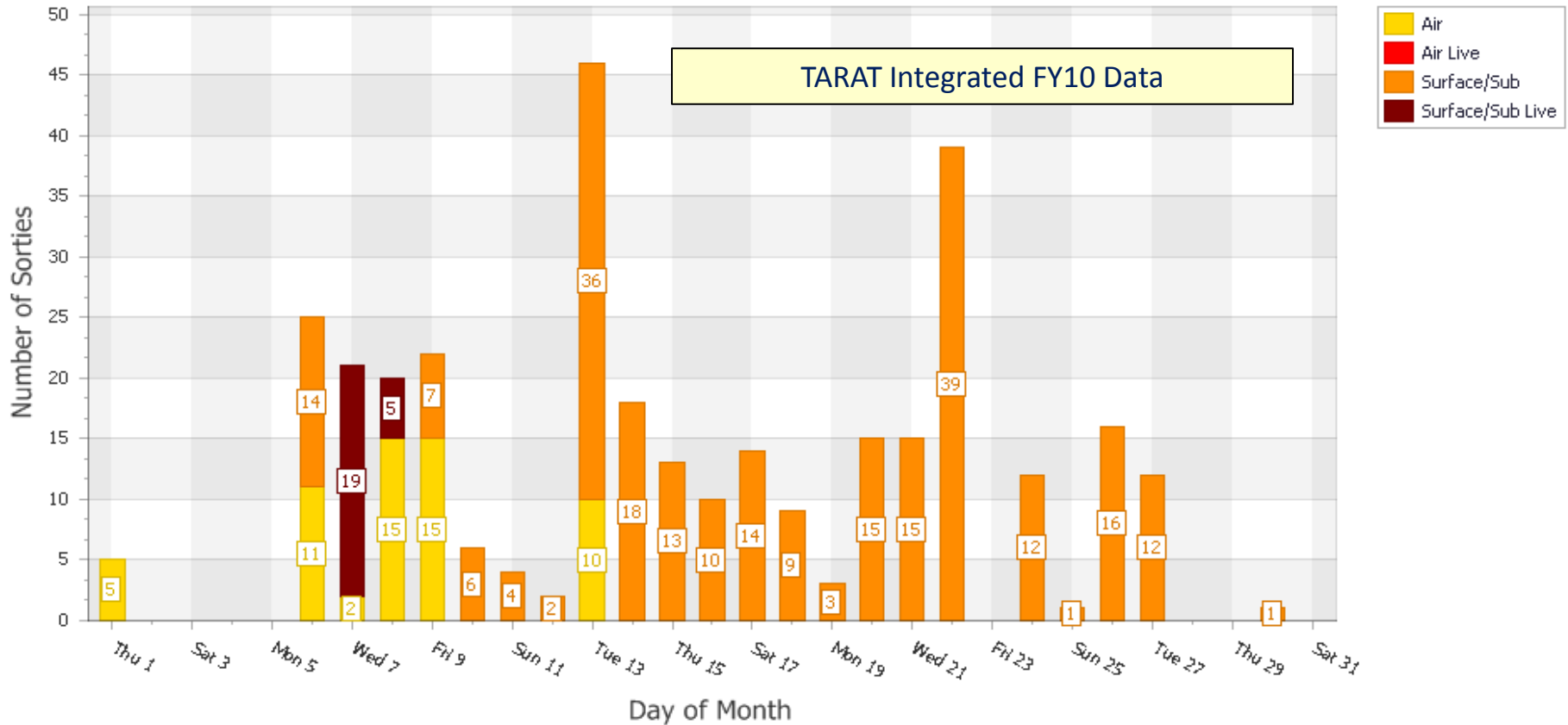
- **Provide impact analysis to defend against encroachment**
- Assess validated range resource requirements
- Show readiness impact of budget decisions
- Provide business case analysis to support POM build





W122 (5) Utilization Day-by-Day Comparison

Total Sorties by Warfare Area



Usage curve increases from FY09 to FY10 with additional data sources

- Improvements over initial dashboard reports (less 'Blue' or 'No Use' days)
- 'Ship Events' will significantly increase with identified additional data



Data Sources in TARAT

Training Area & Range Assessment Tool

Larger Utilization Databases with Data Integrated in TARAT:

- U.S. Fleet Forces (USFF) Range Utilization for Fleet Training
- Navy Air Readiness Reporting
- Navy Ship Readiness Reporting
- Fleet Area Control & Surveillance Facility (FACSFAC) Airspace Scheduling
- NAWC Test Range / MRTFB Utilization
- AUTECH T&E
- SCSC NASA / SCSC Wallops
- USFF ATR (Ordnance Expended)

Data being Integrated in TARAT:

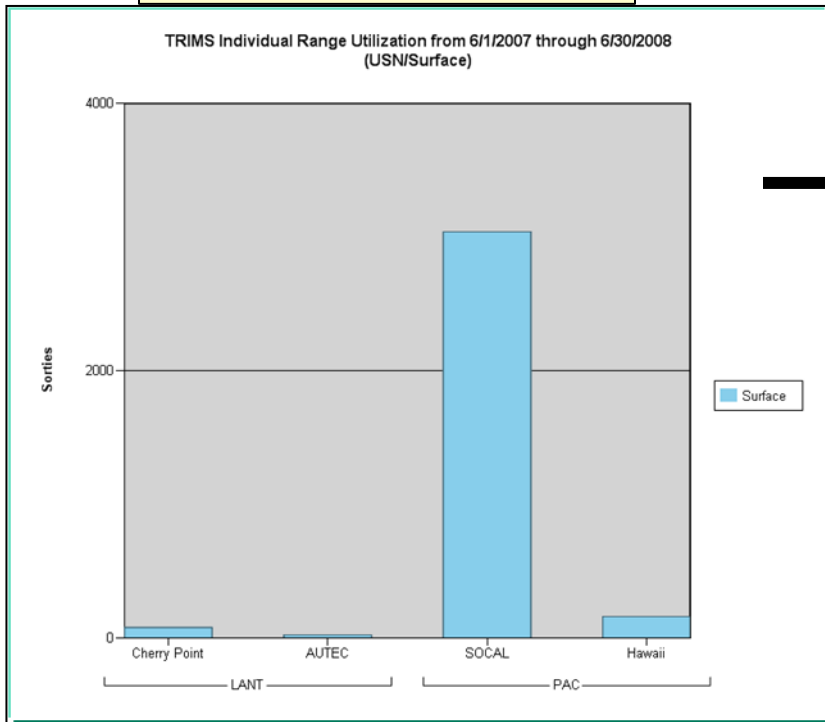
- ATMO Aerial & Seaborne Targets (East Coast only)
- AWIS Aerial Targets
- STAIRS Seaborne Targets
- Ship Electronic Support Evaluation Facility (SESEF)
- USMC RFMSS (only MCAS Cherry Point data at this time)
- NSWC PHD CSSQT data

Future Expansion (FY12):

- Ship Ordnance Expended
- Exercise Event data for Ships

TARAT Level of Data Improving Exercise Event Data Will Give TARAT Density of Operations

Thru Jun08 – No Ship Event Data Recorded on East Coast



After TORIS / NAVSKED Integration

W122 Ship Events Matched in TARAT (as of 29Sep11)

Data Source	# Ship Events	# LHD/LPD/LSD Ship Events
TORIS	250	111
TRIMSV	145	75



With Exercise Event Data Integrated in TARAT

W122 Ship Events Matched in TARAT

Data Source	# Ship Events	# LHD/LPD/LSD Ship Events
CSFTL linked to NAVSKED/TRIMSV/Other Sources	990	420

CSFTL will also match hundreds of ship events / month for JAX & VACAPES OPAREAs

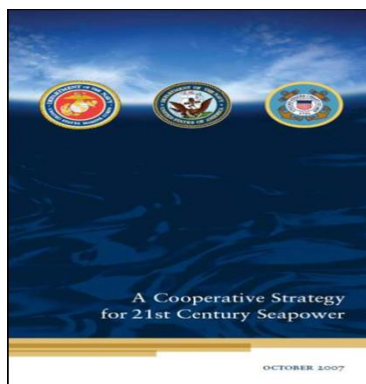
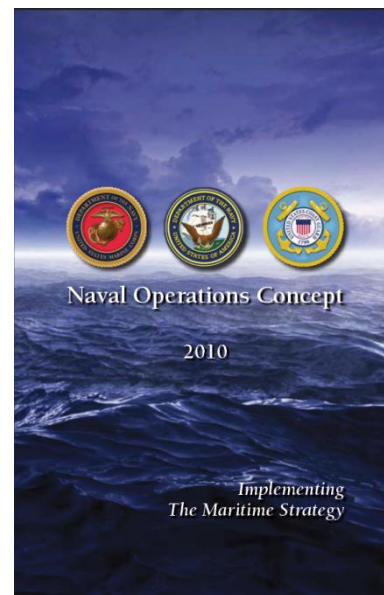
Exercise Event Data Will Give TARAT Full Fleet Use of OPAREA Grids

- Ability to Show 'Impact' to Loss of OPAREA Grid
- Will Provide 'Density of Operations' & Help Connect To Ship Ordnance Data



Naval Operations Concept – 2010

- Describes how, when and where U.S. naval forces will contribute to preventing conflict and prevail in war in order to guide maritime strategy implementation
- “Naval” encompasses Navy, Marine Corps and Coast Guard personnel and organizations
- “Implements” the Maritime Strategy – organized around & expounds upon the six expanded core capabilities identified in the maritime strategy
 - Forward Presence
 - Deterrence
 - Sea Control
 - Power Projection
 - Maritime Security
 - HA / DR



Core Capabilities	Forward Presence	Maritime Security	HA/DR	Sea Control	Power Projection	Deterrence
	Naval Forces					
Aircraft Carriers	X		X	X	X	X
Aircraft	X	X	X	X	X	X
Amphibious Ships	X	X	X	X	X	X
SSNs	X	X		X	X	X
SSGNs	X	X			X	X
SSBNs					X	X
Large Surface Combatants	X	X		X	X	X
Small Surface Combatants	X	X		X		
Major Cutters	X	X	X	X		X
Patrol Craft	X	X	X	X		X
Combat Logistics Force	X	X	X	X	X	
Hospital Ships	X		X			
Maritime Positioning	X		X		X	
JHSV	X	X	X			
Command and Support	X					
Logistics ²¹	X	X	X	X		X

Navy ranges critical to platform and integrated readiness



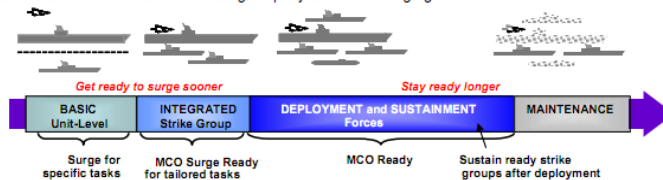
Fleet Response Training Plan (FRTP)

- FRTP is the training cycle the units of a CSG accomplish to be deployment ready
- FRTP Phases
 - Maintenance, Basic (Unit Level), Integrated, Sustainment
 - CSG “Surge Ready” after completion of Integrated phase
- Major CSG FRTP Events
 - CVW Fallon (Air Wing Det)
 - Composite Training Unit Exercise (COMPTUEX)
 - Joint Task Force Exercise (JTFEX)

COMNAVAIRFORINST 3500.20C

Fleet Response Plan (FRP) and Fleet Readiness Training Plan (FRTP)

FRP sets the framework for providing Combatant Commanders with forward-deployed forces while maintaining additional CONUS-based forces that can surge rapidly to meet emerging demands



FRTP guides training throughout the FRP cycle. It controls which capabilities are trained and in what order. Major strike group training events prior to deployment are shown in the figure, which illustrates that FRTP involves both live and synthetic training.

Fleet Synthetic Training (FST)

- In-port training on own equipment with electronic stimulation
- Enables complex training events on a larger scale and greater frequency than is feasible at sea
- Multi-unit and multi-warfare; mission rehearsal; joint interoperability; et al.

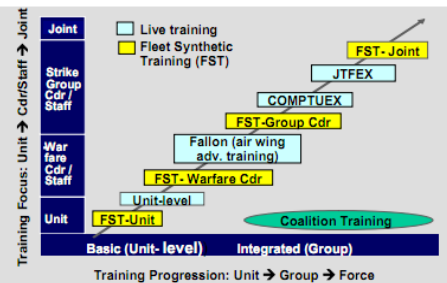


Figure 3-1 FRP - Fleet Response Plan

Ship Ordnance Expended Data on LANT OPAREAs

NOLSC vs. TRIMS vs. USFF ATR Comparison

USFF ATR Data LANT OPAREAs - Jul09

USFF ATR Ship Ordnance Expenditures for CP, JAX & VC OPAREAs (Jul10)			
Munition Type	Total Rounds By Type	ASW / USW Sonar Use	Hours Used
12GA	640	SLQ-25	8.42
20MM CIWS	2840		
20MM DS	5389		
25MM SAPHEI-T	825		
40MM HE-DP	954		
76MM BL-P	108		
C-4 CHARGE (1-1/4 LB)	34		
5.56MM	1180		
5/54 BL-P	221		
5/54 HE-CVT	76		
5/54 ILLUM	159		
7.62MM GRENADE	4		
7.62MM T	14373		
9MM	4923		
BOMB 500LB GEN PURP	10		
CAL.50 T	8900		
EMAT	5		
SIMULATOR FLARE	381		
Total Ordnance Expended (Jul10)	41,022	<i>Source: USFF ATR</i>	

TRIMSV Data LANT OPAREAs - Jul09

TRIMS Ship Ordnance Expenditures for CP, JAX & VC OPAREAs (Jul10)				
LHD-3	LHD	W-122 (17)	20MM	5780
LHD-3	LHD	W-122 (17)	7.62MM	19600
LHD-3	LHD	W-122 (17)	.50 CAL	8400

NOLSC Data LANT OPAREAs - Jul09

(Initial Look) NOLSC Ship Ordnance Expenditure Data for CP, JAX & VC OPAREAs (Jul10)		
Munition Type	Total Rounds By Type	Description / Added Detail
12GA	15505	
20MM CIWS		
20MM DS		
25MM SAPHEI-T	31927	<i>OSG / Pyro / Grenades</i>
40MM HE-DP		
76MM BL-P		
C-4 CHARGE (1-1/4 LB)		
5.56MM	6873	<i>Small Arms 5.56 - 9MM, 22/30/38/45 Cal, Mines</i>
5/54 BL-P	742	<i>Also 751 Charge/Propellant, 458 MK199 Mod1</i>
5/54 HE-CVT		
5/54 ILLUM		
7.62MM GRENADE	300,349	<i>Small Arms 5.56 - 9MM, 22/30/38/45 Cal, Mines</i>
7.62MM T		
9MM		
BOMB 500LB GEN PURP	60	
CAL.50 T	93697	<i>Small Arms 5.56 - 9MM, 22/30/38/45 Cal, Mines</i>
EMAT	23	
SIMULATOR FLARE	0	<i>Could Not Associate Entry in NOLSC</i>
SURFACE CM	77	
CADS/PADS/AEPS	2	
SUS	1	
MK46 (5) TORP / EXTORP	1	<i>None of these entries were found in TRIMV or USFF ATR Ordnance Expended Data</i>
5" ROCKETS	5	
LGB	6	
MARINE LOCATION MARKER	107	
Total Ordnance Expended (Jul10)	449,375	<i>Source: NOLSC</i>

NOLSC Data will provide 'full impact' picture for DOD / DoN in encroachment defense

- TRIMSV & USFF ATR have slightly improved ship ordnance expenditure data since 2009
 - Still only record ~9% of actual expenditures



National Ocean Policy Priority Objectives

www.whitehouse.gov/oceans

National Priority Objectives

1. **Ecosystem-Based Management:** Adopt ecosystem-based management as a foundational principle for the comprehensive management of the ocean, our coasts, and the Great Lakes.
2. **Coastal and Marine Spatial Planning:** Implement comprehensive, integrated, ecosystem-based coastal and marine spatial planning and management in the United States.
3. **Inform Decisions and Improve Understanding:** Increase knowledge to continually inform and improve management and policy decisions and the capacity to respond to change and challenges. Better educate the public through formal and informal programs about the ocean, our coasts, and the Great Lakes.
4. **Coordinate and Support:** Better coordinate and support Federal, State, tribal, local, and regional management of the ocean, our coasts, and the Great Lakes. Improve coordination and integration across the Federal Government, and as appropriate, engage with the international community.
5. **Resiliency and Adaptation to Climate Change and Ocean Acidification:** Strengthen resiliency of coastal communities and marine and Great Lakes environments and their abilities to adapt to climate change impacts and ocean acidification.
6. **Regional Ecosystem Protection and Restoration:** Establish and implement an integrated ecosystem protection and restoration strategy that is science-based and aligns conservation and restoration goals at the Federal, State, tribal, local, and regional levels.
7. **Water Quality and Sustainable Practices on Land:** Enhance water quality in the ocean, along our coasts, and in the Great Lakes by promoting and implementing sustainable practices on land.
8. **Changing Conditions in the Arctic:** Address environmental stewardship needs in the Arctic Ocean and adjacent coastal areas in the face of climate-induced and other environmental changes.
9. **Ocean, Coastal, and Great Lakes Observations, Mapping, and Infrastructure:** Strengthen and integrate Federal and non-Federal ocean observing systems, sensors, data collection platforms, data management, and mapping capabilities into a national system, and integrate that system into international observation efforts.

- Priority/Objective number two is the most important near term concern
- Priority/Objective nine may have implications for TARAT long term use by the Navy



CMSP Goals

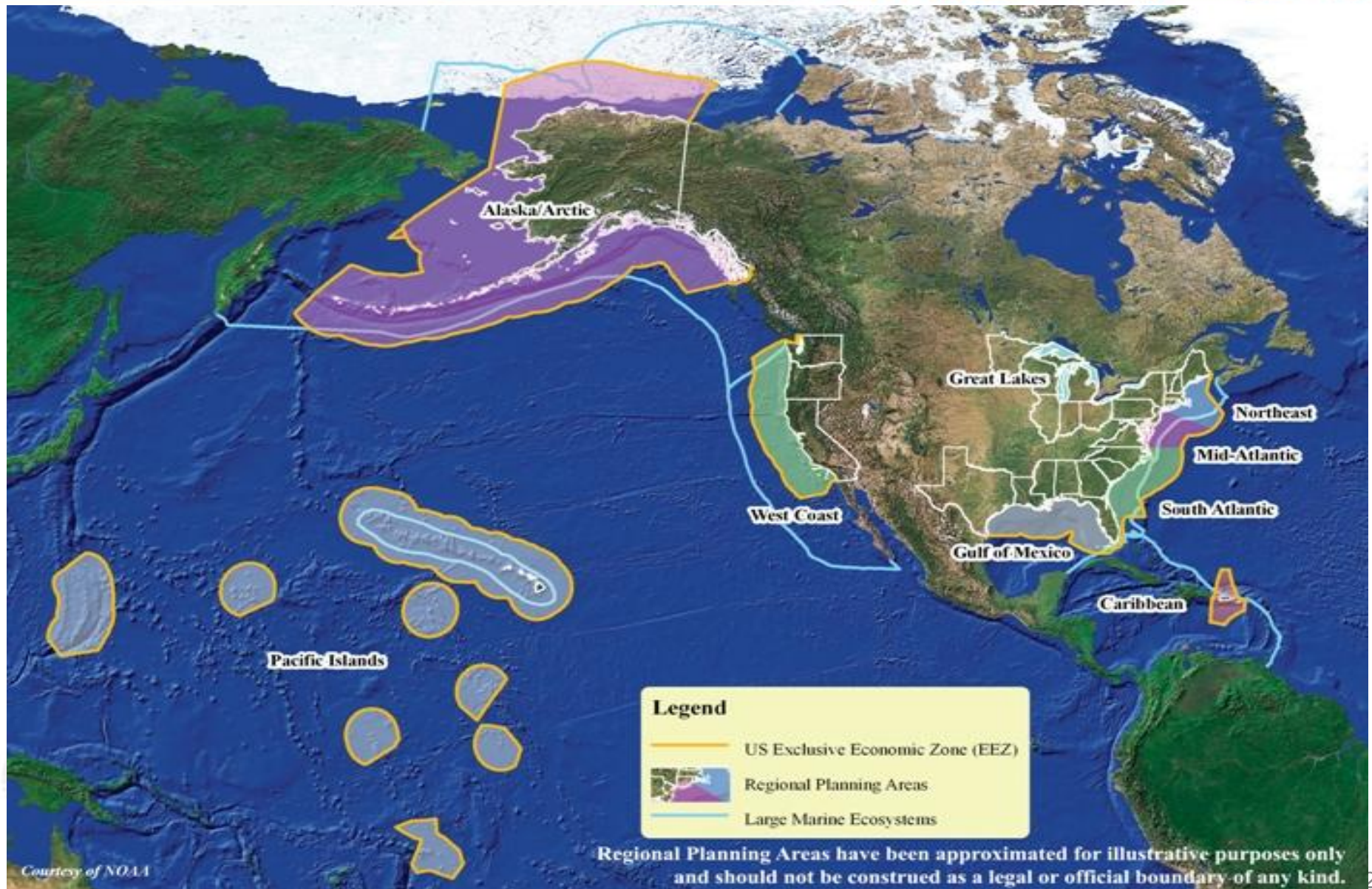
The National Goals of Coastal and Marine Spatial Planning

1. Support sustainable, safe, secure, efficient, and productive uses of the ocean, our coasts, and the Great Lakes, including those that contribute to the economy, commerce, recreation, conservation, homeland and national security, human health, safety, and welfare;
2. Protect, maintain, and restore the Nation's ocean, coastal, and Great Lakes resources and ensure resilient ecosystems and their ability to provide sustained delivery of ecosystem services;
3. Provide for and maintain public access to the ocean, coasts, and Great Lakes;
4. Promote compatibility among uses and reduce user conflicts and environmental impacts;
5. Improve the rigor, coherence, and consistency of decision-making and regulatory processes;
6. Increase certainty and predictability in planning for and implementing new investments for ocean, coastal, and Great Lakes uses; and
7. Enhance interagency, intergovernmental, and international communication and collaboration.

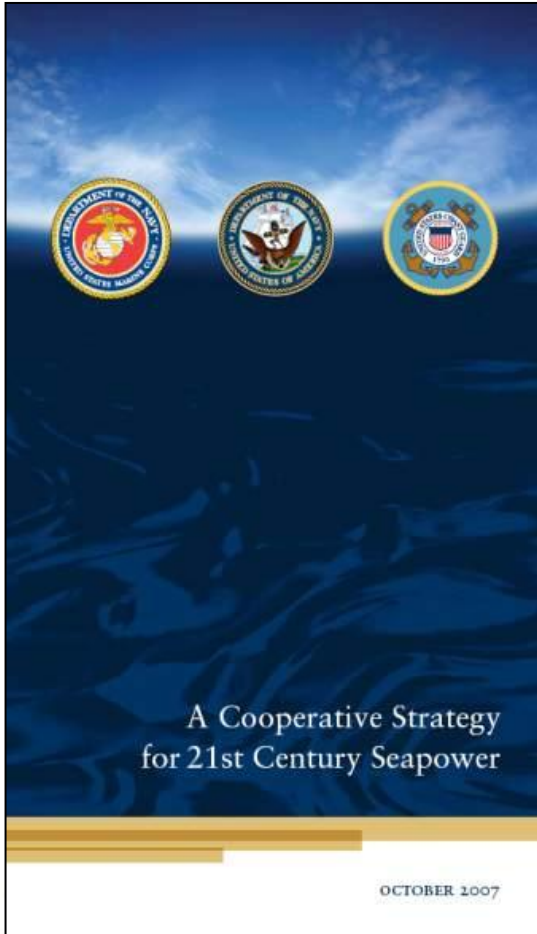
- Goal seven assumes metrics and data (scientific basis) for communication and collaboration



CMSP Management Regimes



The Maritime Strategy



National Strategic Imperatives:

1. *Limit regional conflict with forward-deployed, decisive maritime power*
2. *Deter major power war*
3. *Win our Nation's wars*
4. *Contribute to homeland defense in depth*
5. *Foster & sustain cooperative relationships with more international partners*
6. *Prevent or contain local disruptions before they impact the global system*

Core Capabilities of the Maritime Strategy:

1. *Forward Presence*
2. *Deterrence*
3. *Sea Control*
4. *Power Projection*
5. *Maritime Security*
6. *Humanitarian Assistance and Disaster Response*

Core Fleet Response Plan training range requirements drive usage and utility of ranges for the Navy and U.S. National Security