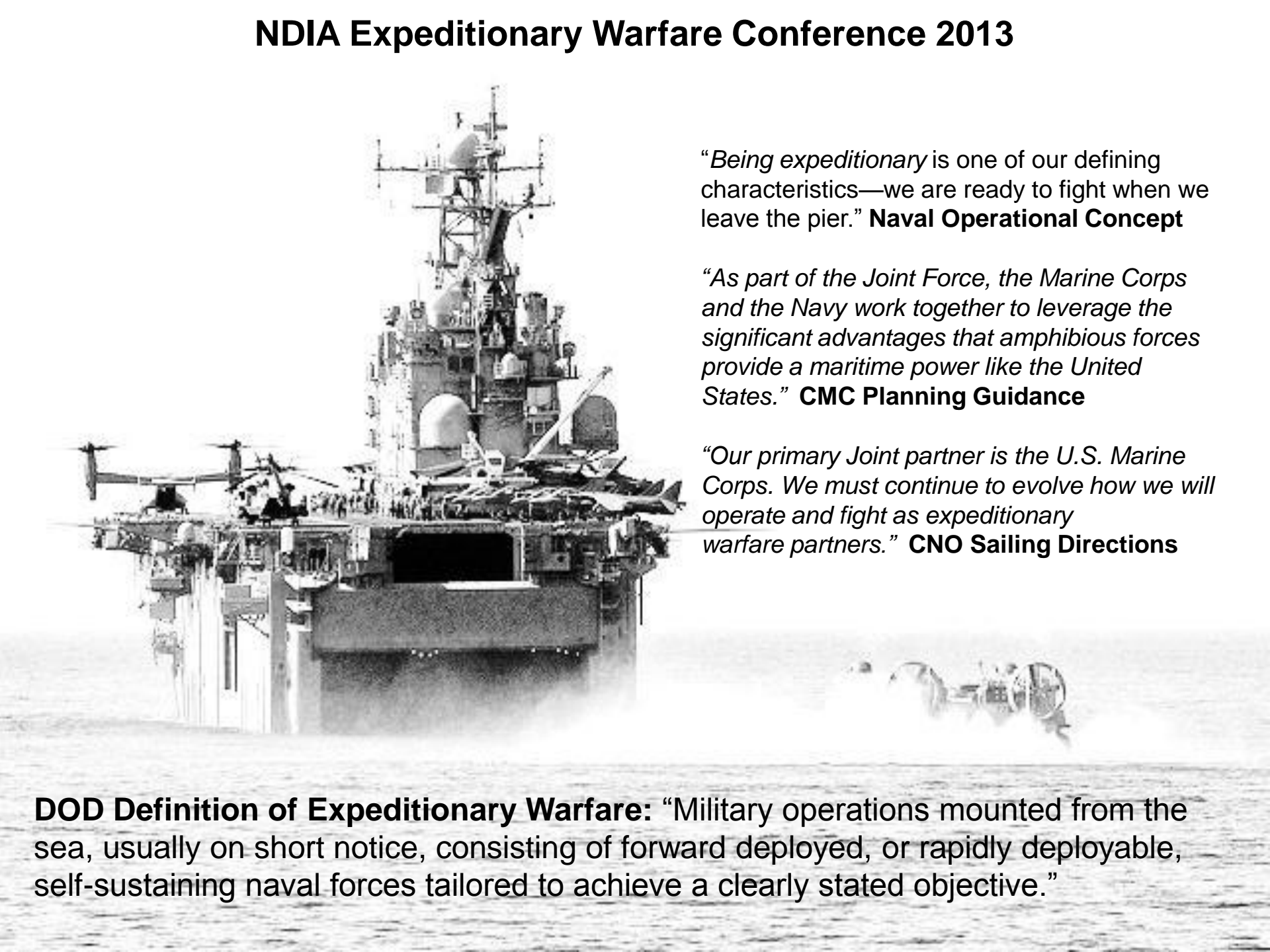


# NDIA Expeditionary Warfare Conference 2013



*“Being expeditionary is one of our defining characteristics—we are ready to fight when we leave the pier.”* **Naval Operational Concept**

*“As part of the Joint Force, the Marine Corps and the Navy work together to leverage the significant advantages that amphibious forces provide a maritime power like the United States.”* **CMC Planning Guidance**

*“Our primary Joint partner is the U.S. Marine Corps. We must continue to evolve how we will operate and fight as expeditionary warfare partners.”* **CNO Sailing Directions**

**DOD Definition of Expeditionary Warfare:** “Military operations mounted from the sea, usually on short notice, consisting of forward deployed, or rapidly deployable, self-sustaining naval forces tailored to achieve a clearly stated objective.”

# NDIA EXPEDITIONARY WARFARE DIVISION(EWD)

## DIVISION LIAISONS

USN: MajGen Timothy C. Hanifen, USMC OPNAV (N95)  
 USMC: LtGen Richard P. Richard Mills, USMC (MCCDC)  
 USCG: RADM Paul Zukunft, USCG (CG -53)

## CHAIRMAN

Tom Benes  
*Alion Science and Technology*

## VICE CHAIRMAN

Ray Duffy  
*Northrop Grumman*

## USN /USMC /USCG REPRESENTATIVES

COL Christopher Arantz, USMC (N95A - Executive Assistant)  
 CAPT Travis Schweizer, USN (N951 - Naval Special Warfare)  
 CAPT Frank Linkous, USN (N952 - Mine Warfare)  
 CAPT Erik Ross, USN (N953 - Amphibious Warfare)  
 CDR Robert Debus, USN (N957 - Expeditionary Combat)  
 CAPT Patrick Garin, USN (N959 - Manpower and Training)  
 CAPT Chris Mercer, USN (NAVSEA-PMS 377)  
 Col Wade Johnson, USMC (NAVSEA USMC PEO  
 Ships Advisor)  
 CDR John Zuhowski, USN (PP&O)  
 CAPT Mike Mohn, USCG (CGHQ)  
 Mr Jim Strook (MCCDC)  
 Mr. Keith Bauer (MSC)

## NDIA STAFF

**DIRECTOR**  
 Christy Mason  
**MEETING PLANNER**  
 Brant Murray

*Purvis Systems*

## EXPEDITIONARY WARFARE CONFERENCE

### CHAIRMAN

Buck Liberto  
*Boeing*

### VICE CHAIRMAN

Skip Gaskill  
*Textron*

## ANNUAL DIVISION MEETING

### CHAIRMAN

Ron McFarland  
*SAIC*

### VICE CHAIRMAN

Chris Gunther  
*Battelle*

## INDUSTRY PARTNERS

### CHAIRMAN

Terry O'Brien  
*Huntington Ingalls Industries*

### VICE CHAIRMAN

Reed Bolick  
*Cypress International*

## LITTORAL WARFARE

### CHAIRMAN

Jeff Steelman  
*Steelman Group*

### VICE CHAIRMAN

Jack Flanagan  
*CACI*

## MINE WARFARE

### CHAIRMAN

William Key  
*William Key Tech Group*

### VICE CHAIRMAN

Terry Schwieger  
*Alion*

### CHAIR EMERITUS MIW

Charles Horne, III

## AMPHIBIOUS WARFARE

### CHAIRMAN

Dewey Mauldin  
*Boeing*

### VICE CHAIRMAN

Mark Rios  
*Purvis Systems*

## NAVAL FIRES AND AVIATION

### CHAIRMAN

Darien Keams  
*BAE*

### VICE CHAIRMAN

Lester Niblock  
*CGI*

## C4I IN THE LITTORALS

### CHAIRMAN

Roy Byrd  
*Excelis*

### VICE CHAIRMAN

Thomas Davilli  
*SAIC*

## SEABASING & SUSTAINMENT

### CHAIRMAN

Eric Casey  
*Maersk*

### VICE CHAIRMAN

Tom Wetherald  
*General Dynamics NASSCO*

## SCIENCE AND TECHNOLOGY

### CHAIRMAN

Irene Farquhar  
*CACI*

### VICE CHAIRMAN

Open

# Amphibious Forces









竜

803

Ep

08

CHIEF

250

































# Mine Countermeasures



















# Maritime Security













# EOD Teams

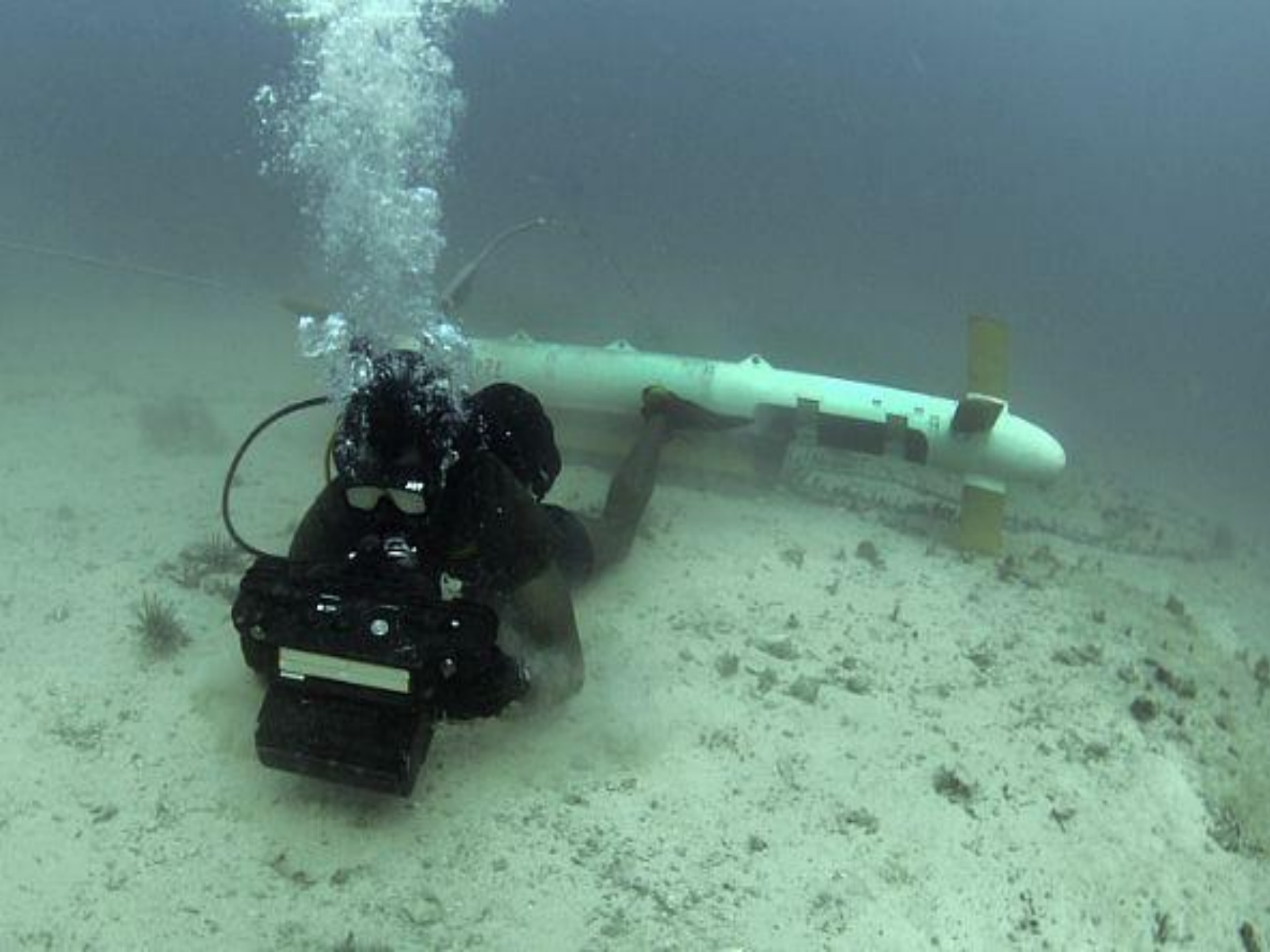


















# SEAL Teams



















# Sea Basing



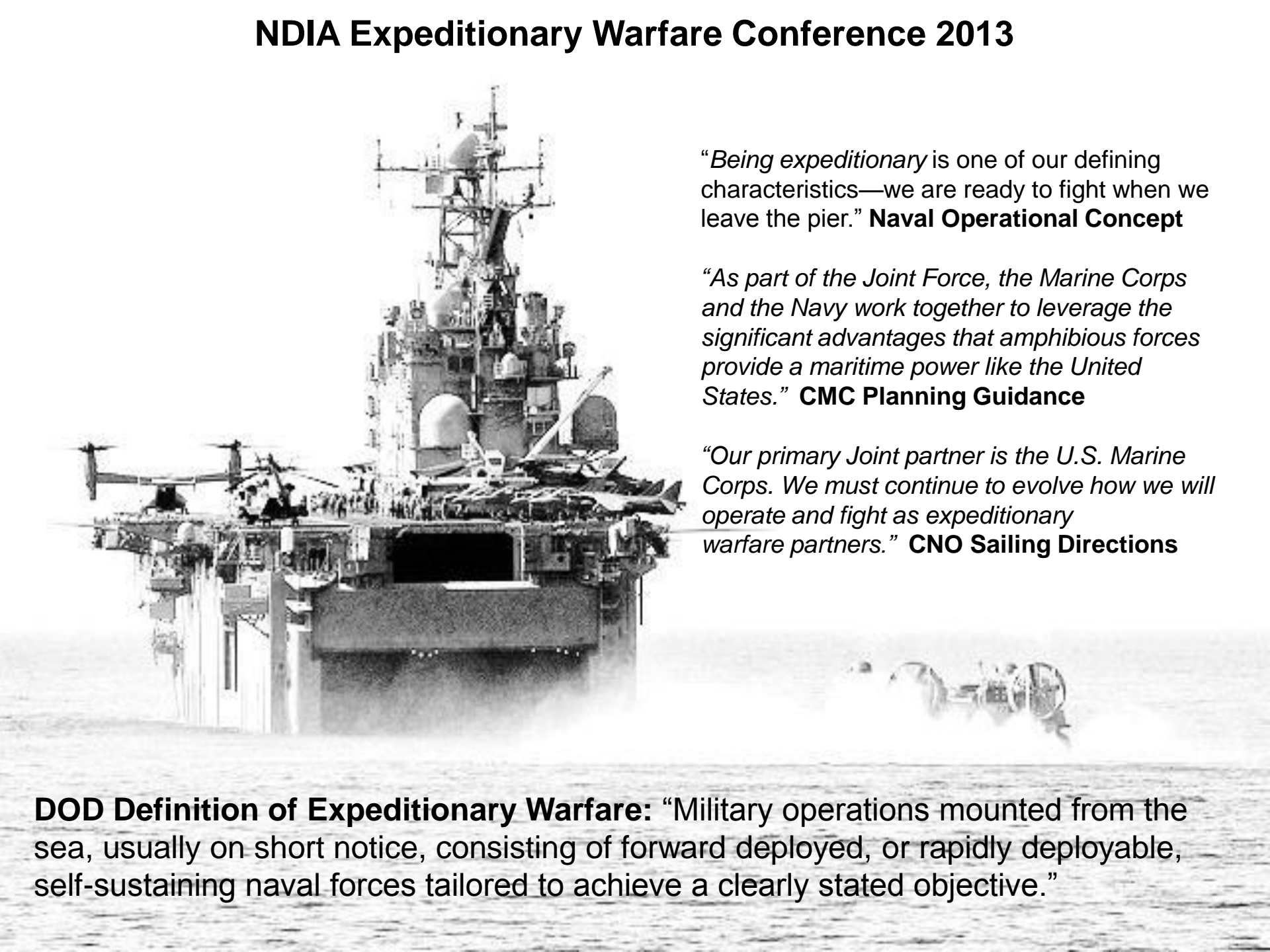








# NDIA Expeditionary Warfare Conference 2013



*“Being expeditionary is one of our defining characteristics—we are ready to fight when we leave the pier.”* **Naval Operational Concept**

*“As part of the Joint Force, the Marine Corps and the Navy work together to leverage the significant advantages that amphibious forces provide a maritime power like the United States.”* **CMC Planning Guidance**

*“Our primary Joint partner is the U.S. Marine Corps. We must continue to evolve how we will operate and fight as expeditionary warfare partners.”* **CNO Sailing Directions**

**DOD Definition of Expeditionary Warfare:** “Military operations mounted from the sea, usually on short notice, consisting of forward deployed, or rapidly deployable, self-sustaining naval forces tailored to achieve a clearly stated objective.”