

# Expeditionary Warfare Conference

November 17, 2014

USMC Capabilities  
Development Directorate Panel

## USMC Logistics Capability Development

*Jon Hull  
Deputy Director,  
Logistics Integration Division  
JCA 4 – Logistics  
CDD, CD&I/MCCDC*

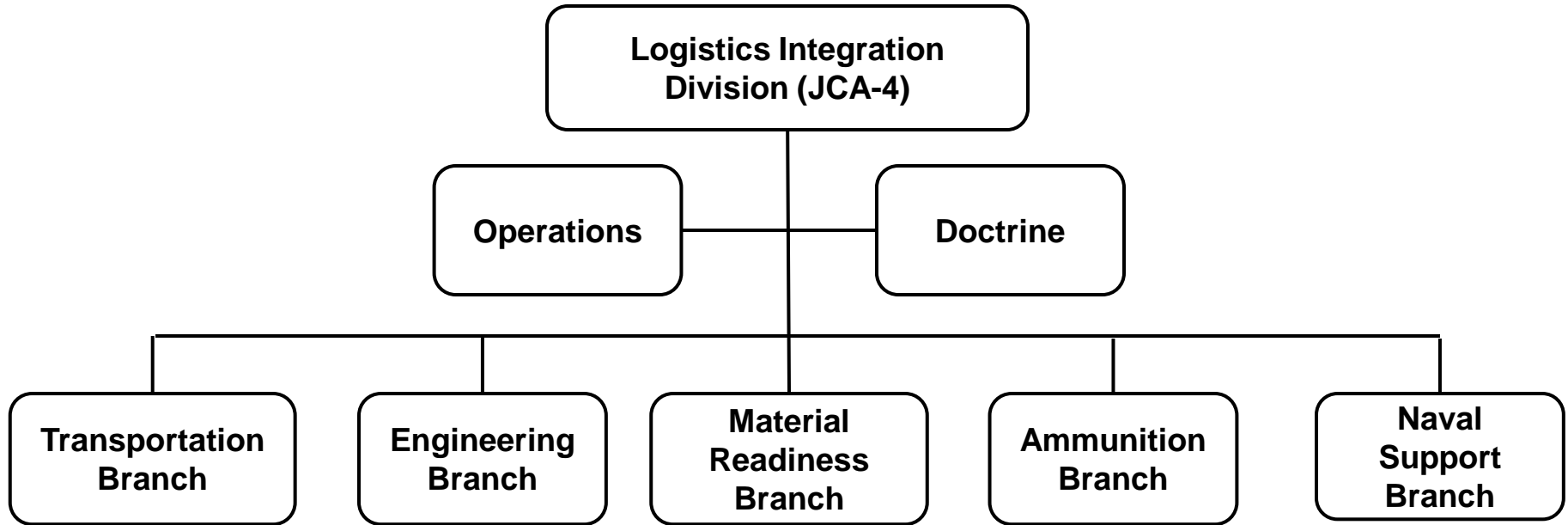


**EXPEDITIONARY  
FORCE 21**

**FORWARD and READY:  
Now and in the Future**



# Logistics Integration Division (JCA 4)



**Integrate future and evolving Logistics concepts with identified capabilities, requirements and supporting programs to synchronize Marine Corps initiatives and shape Naval and Joint initiatives within the JCIDS process**



# Near Term Considerations



- Assess, reset and redistribute retrograding equipment
- Management of excess equipment
  - Economic/Contingency stocks
  - Dispose
- Balance legacy sustainment and modernization activities
- Capitalize upon energy efficiency advances, innovation and technologies
- Establish comprehensive organic maintenance capability
  - Equip and train
- Table of Equipment and AAO refinement
  - Fully address Marine Logistic Group reorganization impacts
  - Support SPMAGTFs
  - Align to Expeditionary Force 21



# Transportation



**E20**



**Fully Fielded**



**2030?**



**Enduring requirement OF 2510**

**Fully Fielded FY 18**



**Fully Fielded**



Move Capabilities

# Transportation



**ITV Fully Fielded**



**Future ATV Role**



**MCWL LOE 15**





# Transportation



**Modular Design 3 in 1**



**Critical Enablers to Throughput**



# Engineer (CE/MHE)



**53 K implications**

**Modular Armor**



**Mine Rollers**





# Engineer (Utilities/Fuel)



**E20**

Power & Distribution



Advanced  
Renewables



Environmental Control



**E20/EF 21**

Water



**MEHPS Bridge**

Fuel

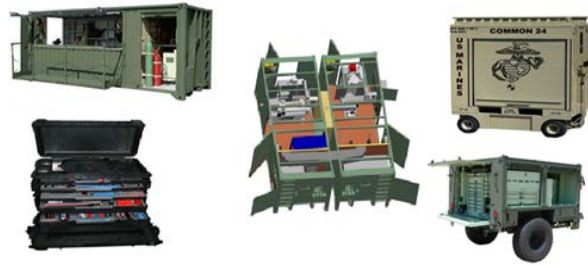


**Small Unit**





# Material Readiness



ANTSM-214A Calibration System



**Test/Diagnostic/Calibration Equipment with Associated Shelters**



# Ammunition



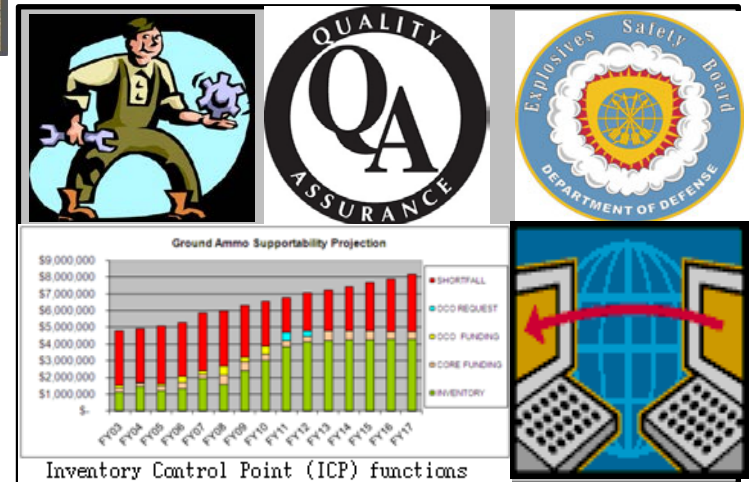
## Ammunition Life Cycle Management

**\$15M investment reclaimed**  
**\$260M of unserviceable inventory**

### Conventional Ground Ammunition

#### Develop Total Munitions Requirement:

- War Reserve
- Training
- Testing





# Naval Support Services



**Train and Equip....point of injury through Level II Medical Services**



*Questions?*