

(U) Joint Improvised-Threat Defeat Agency

Concept of Operations Information Brief

July 2015



Helping Warfighters adapt



The overall classification of this briefing is UNCLASSIFIED



Agenda

- Purpose
- Naming Convention, Mission, Organization Model, and Scope
- Broad Responsibilities and Functions
- Levels of Effort
- Value Proposition



Purpose

On 11 March 2015, JIEDDO was established as a Defense Agency designated as a Combat Support Agency. The Deputy Secretary of Defense directed that USD(AT&L) provide him a coordinated Concept of Operations (CONOP) for his approval.

Naming Convention - Mission



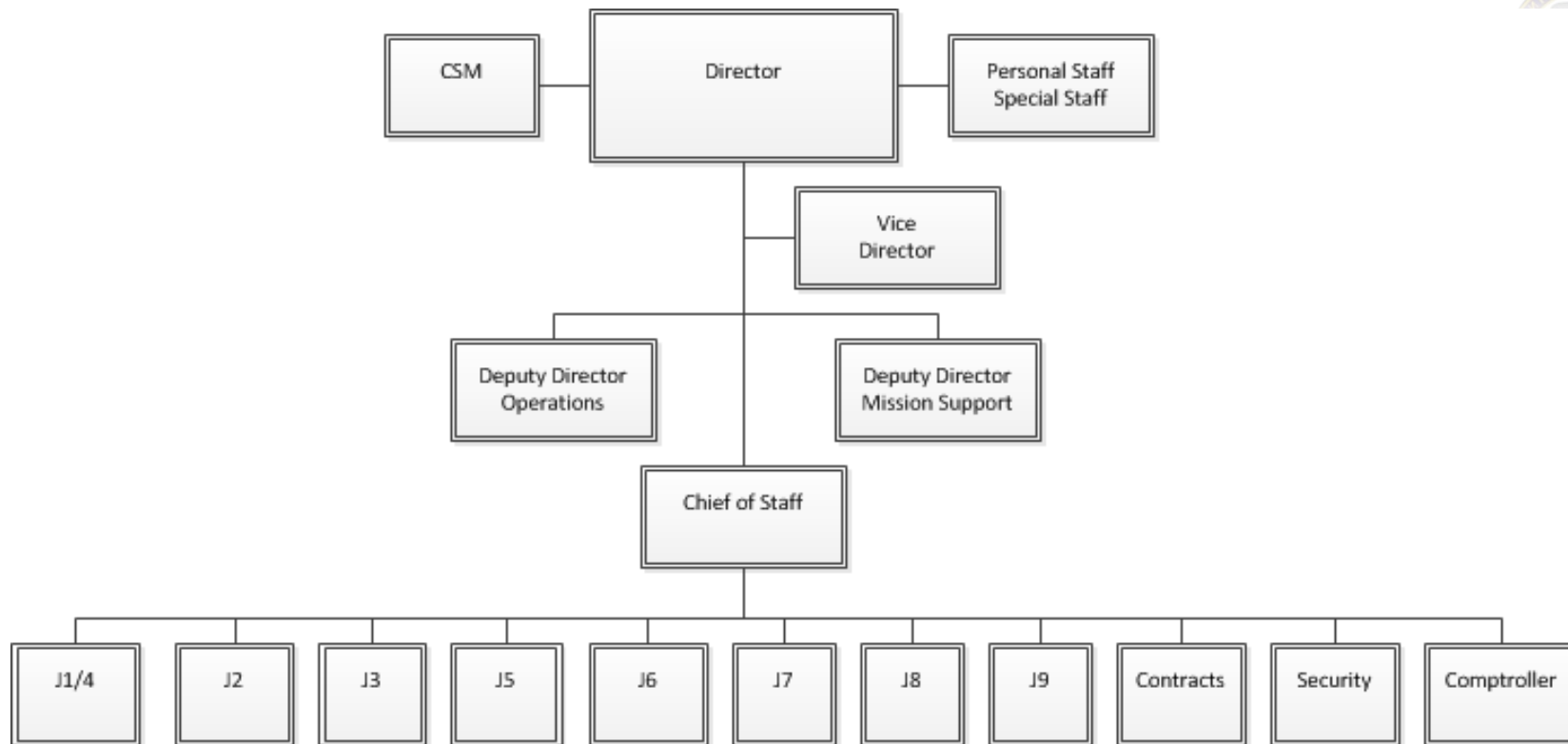
Joint Improvised-threat Defeat Agency (JIDA)

Mission: The Joint Improvised-Threat Defeat Agency (JIDA) will enable Department of Defense actions to counter improvised threats with tactical responsiveness and anticipatory acquisition in support of Combatant Commands' efforts to prepare for, and adapt to, battlefield surprise in support of counter-terrorism (CT), counter-insurgency (COIN), and other related mission areas including *counter-improvised explosive device (C-IED)*.

Sustain Counter-IED while countering threat networks and their other disruptive technologies



Organization

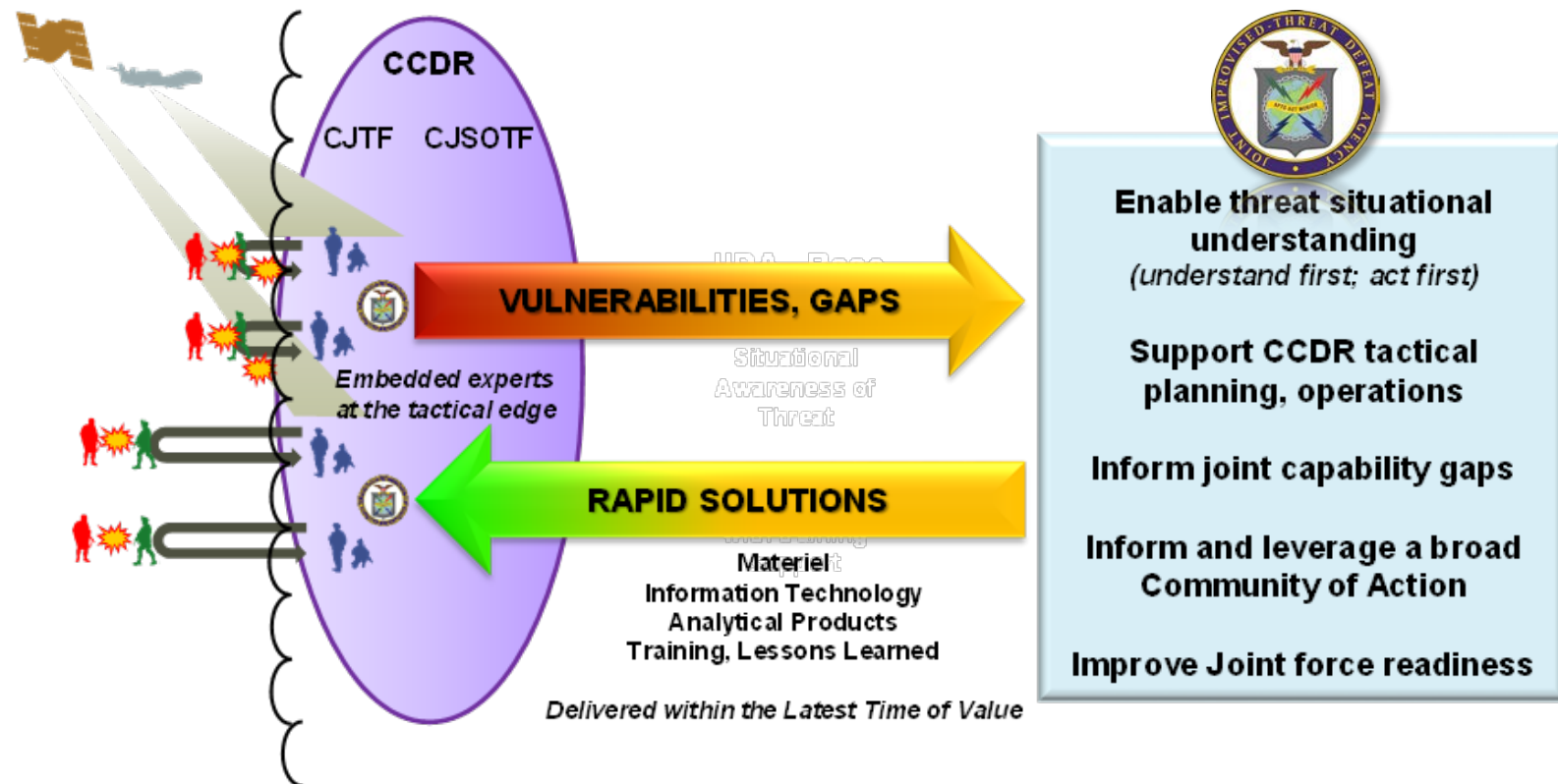


The JIEDDO Counter-IED Operations/Intelligence Integration Center (COIC) and Joint Center of Excellence (training support) JCOE capabilities have been fully sustained within the J2, J3, J6, J7 and J9



Scope – JIDA Business Model

"We help Commanders adapt."



Operationally connected...flat, adaptive, responsive at the tactical edge



Core Functions

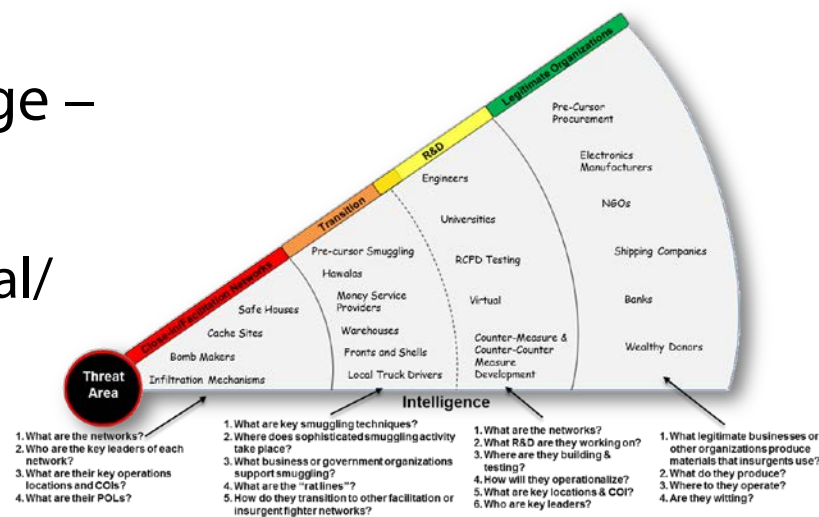
- **Assist Situational Understanding (of threat network activities)**
 - Operationally connected, planning assistance, identifies technology gaps, enable upstream threat facilitation network effects
- **Enable Rapid Capability Delivery (RCD) to Implement DoD Accelerated and Urgent Acquisition Models**
 - Proactive, threat-based acquisition, urgent-emergent, counter-threat technologies and non-material investments
 - 0-2 years/urgent, 2-5 years/emergent, 5+ years/bring technology closer
- **Enable DoD Responses to Improvised Weapons**
 - Community of Action solution approach - leverage others' authorities, access, and capabilities – USG and coalition

Intelligence-Requirements-Acquisition Integration



Responsibilities/Functions – Threat Understanding

- J2 designated as a Defense Intelligence Component (pending USD(I))
 - Multiple Intelligence capabilities
 - IC and interagency Communities of Action
- CCDR directed Embedded/Tactical Edge – Reach Back model
 - Intelligence integration – inform tactical/operational planning – threat TT&P situational understanding – inform acquisition (gaps)
 - Analyze, disseminate in support of mission, CCDRs
- Maintain Global threat networks Common Intelligence Picture

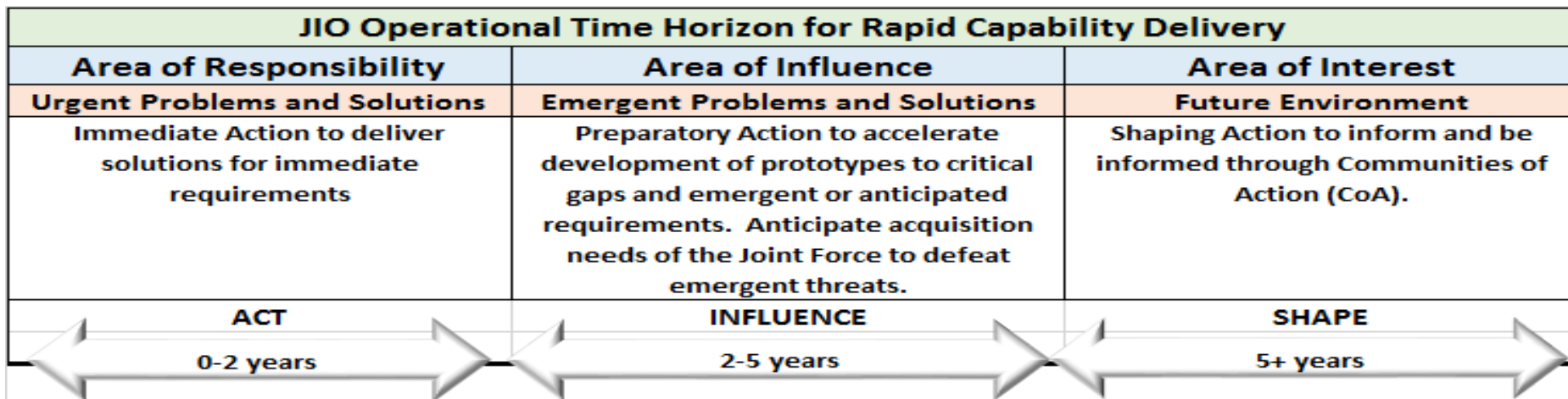


Understand and inform threat early – Informs tactical Operational planning and acquisition (gaps)



Responsibilities/Functions – *Rapid Capability Delivery*

- Early identification of Joint Force risk and vulnerabilities
- Rapid gap assessment, solution determination (material; non-material), and investment
- Fully compliant with DoDD 5000.71 (Rapid Fulfillment of CCDR Urgent Operational Needs) and DoDI 5000.02 (Operation of the Defense Acquisition System)
- Urgent, emergent, shaping model



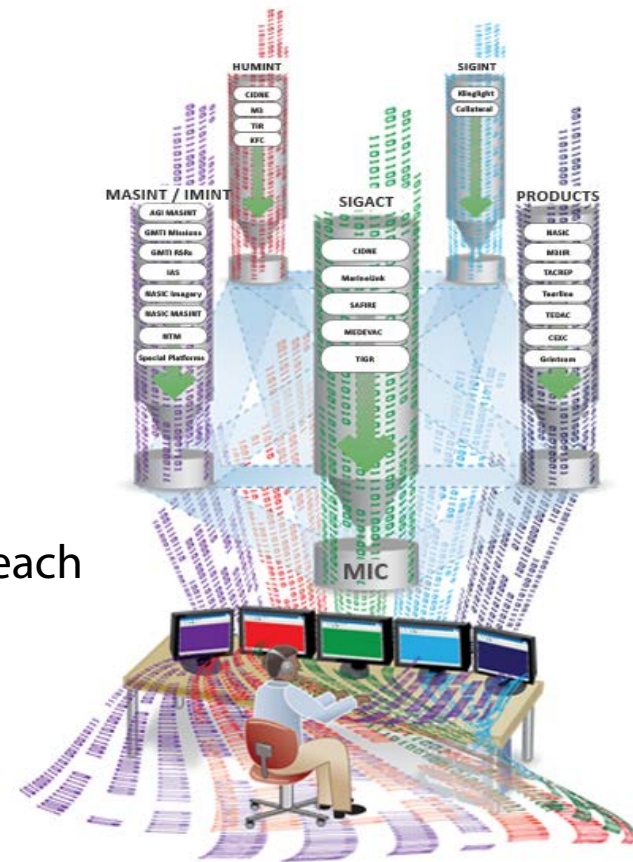
Threat-based, Deliberate, Structured, Proactive



Responsibilities/Functions – Advanced Technology

• Mission IT

- Intelligence and information reconnaissance (collection) and fusion/integration (processing)
- Software as a Service, Platform as a Service
 - Intelligence cloud services – open, fully accessible
 - Advanced software development and data science applications with Designated Approval Authorities (ITO/ATO)
 - Rapid prototyping, R&D, Community of Action outreach
- Deployable voice/data/SATCOM – connectivity (Reach-back)



• Enterprise IT

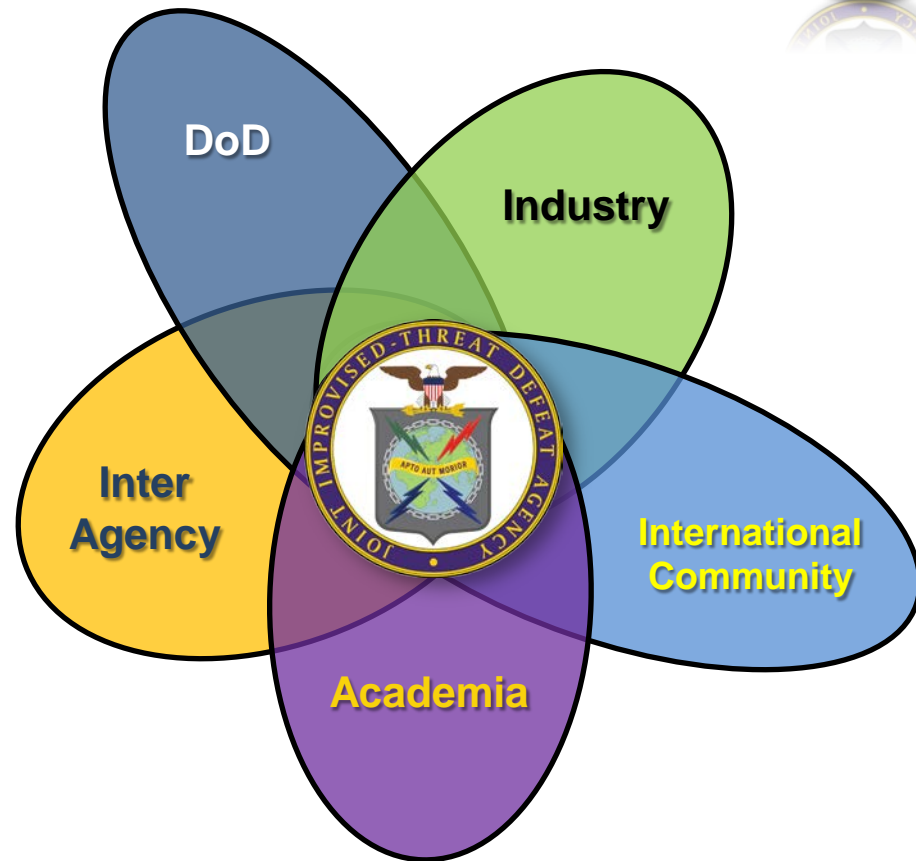
- Critical: Sustain 'path to production'
- Support for infrastructure, communications

***Enable tactical edge connectivity...
... Enable JIDA Business Enterprise***



Functions – *Community of Action (CoA)*

- Leverages access, authorities, and investment of others ISO solution development
 - Ways and Means
 - Processes, access, capabilities, authorities, information, resources, and tools



***Collaborative – power of many vs. power of one
Achieve complimentary effects to solve problems and generate effects***



Functions – *Training Support*

- Enables counter-threat capabilities readiness for deploying forces
 - Integrated with Services' training arms and centers
 - Material solution training support packages
- Delivery of developed analytical tools and methods – internal and external
- Joint training event and exercise support
- CDR training-objectives based
- Capture/Distribution of Lessons Learned and input/translation into Joint Doctrine

Force preparedness and informs further solutions spirals



Levels of Effort - *Scalable*

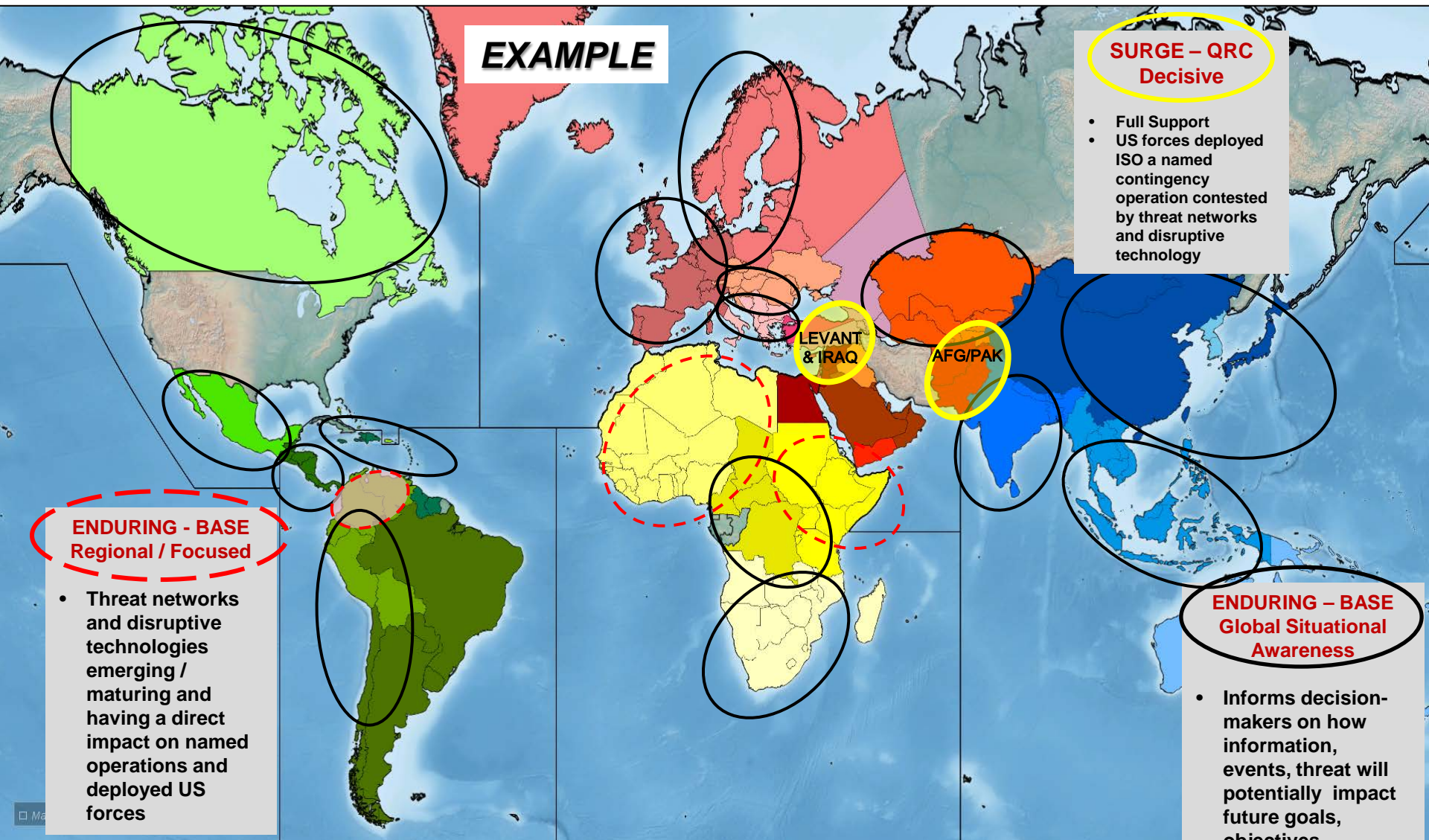
- **Global Situational Awareness**
 - Inform how threat information and their supporting events affect CCMD strategies, goals, and objectives both immediately and in the near future - monitoring
- **Regional-Focused Support**
 - Where threat networks and their improvised weapons are emerging or maturing and/or are having a direct or indirect (supporting) impact on contingency operations and deployed US Joint Forces – tailored support, emerging threat
- **Decisive Effort – Quick Reaction Capability (Surge)**
 - Where US Forces are deployed in support of a contingency operation that is contested by threat networks and their use of improvised weapons – comprehensive support, contingency operations

Threat-prioritization then a scalable commitment of resources



Levels of Effort

Quick Reaction/Surge, Regional, Global



Requisite Authorities



- Flexible funding
- Disruptive technology precursor flow disruption
- Classification
- Foreign disclosure
- US agency agreements
- Foreign government liaison

Value Proposition



- Threat and disruptive technology awareness in support of US joint forces' rapid adaptation
- Quick reaction/surge capability to provide rapid capability development and delivery to defeat threat networks and their improvised threats
- Enables counters to improvised explosive device and other emerging battlefield or operational threats; and
- Enables US Joint Force preparedness

Tactical responsiveness while anticipating CCMD requirements to enhance force protection, increase tactical force maneuverability, and mitigate battlefield or operational surprise in support of CT, COIN, and other related operational areas, including counter-improvised explosive devices



Support to the Warfighter

- Support to CCDRs and the Warfighter on the Tactical Edge will be maintained and enhanced
 - **No changes to current vehicle to request support, deployed support or fielding of material and non-material solutions**
 - **Transition to a CSA will be “transparent” to the Warfighter and the Community of Action focused on Improvised Threats with *no* disruption of support**
- Existing working relationships with higher and adjacent government entities and organizations, services, academia, national laboratories and industry will be maintained
- JIDA will build upon the lessons learned and capabilities developed by JIEDDO



APTO AUT MORIOR

