



# SPECIAL OPERATIONS FORCES INDUSTRY CONFERENCE

**Mr. David Breede**

Program Executive Officer (Acting)

**SPECIAL RECONNAISSANCE,  
SURVEILLANCE, AND  
EXPLOITATION**

**SPECIAL RECONNAISSANCE, SURVEILLANCE, AND EXPLOITATION**

# *Program Executive Office*

## *Special Reconnaissance, Surveillance, and Exploitation*

### DEEP DIVE TOPICS

#### **Targeted Requirement Execution (T-REX)**

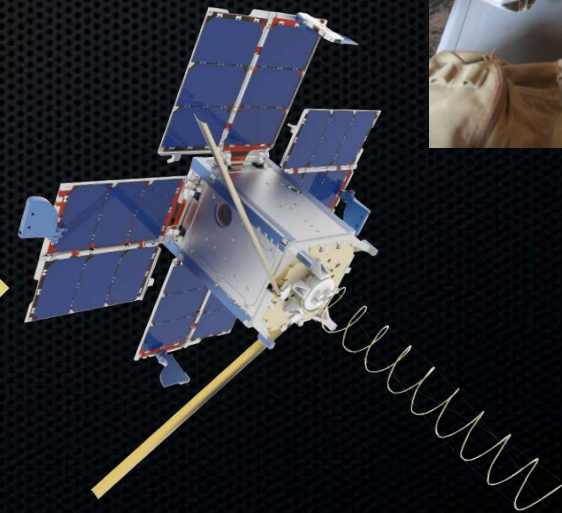
*Contract Review And Update On Business Process*

#### **Sensitive Site Exploitation**

*Capability Insertion Opportunities*

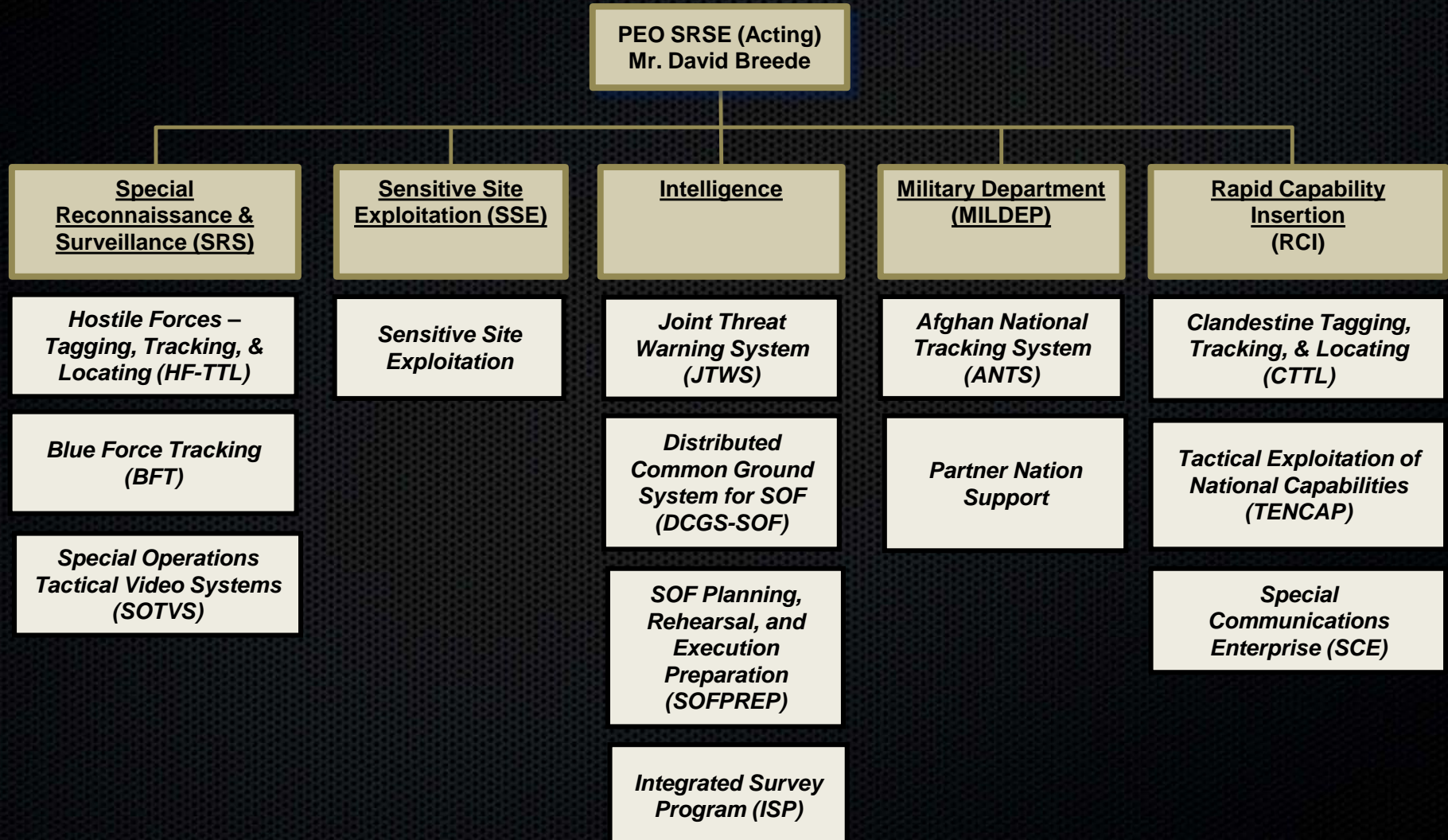
#### **Rapid Capability Insertion**

*Entry Point To Programs of Record*



# Program Executive Office

## Special Reconnaissance, Surveillance, and Exploitation





# SPECIAL OPERATIONS FORCES INDUSTRY CONFERENCE

TARGETED  
REQUIREMENT  
EXECUTION (T-REX)

SPECIAL RECONNAISSANCE, SURVEILLANCE, AND EXPLOITATION

# T-REX

## What is Targeted Requirements Execution

- **Targeted Requirements Execution (T-REX) is a Multiple Award IDIQ Contract to Procure Intelligence, Surveillance, and Reconnaissance (ISR) technologies**
- **3 Main Categories are within Scope**
  - Hardware and Modifications
  - Specialized Communication Solutions and Networks
  - Signals Processing Capabilities
- **Period of Performance: 5 yr base at \$750M (no option yrs)**
- **4 Prime Systems Integrators on IDIQ (3 Large / 1 Small)**
- **Goals of T-REX:**
  - Continuously increase capability through tech insertion
  - Maintain speed, while balancing cost and impact to logistics
  - Increase competition in commodity procurement / purchasing
- **SOF AT&L-KI will retain ordering authority; External SRSE ISR requirements must originate from the customer and coordinate with PCOR**

PEO SRSE ~ \$100M / year  
 SOF AT&L ~ \$20M / year  
 Contingency ~ \$30M / year

Ceiling = \$750M over five years

A-T Solutions  
 Barbaricum  
 Leidos  
 OGSystems

# T-REX

## Targeted Requirements Execution (T-REX)

### Expanded Scope of T-REX

- Programs within the PEO
  - HF-TTL
  - JTWS
  - TVS/RSTA
  - SSE
  - SCE
  - RCI
- Programs within SOF AT&L
  - PM SA
  - PM CISS
  - SAF-C/FW
  - TALOS
  - S&T Dir
  - Other (J4/ AO)
- Programs External to SOF AT&L
  - JSOC J2
  - SOCOM J2X / Joint Staff

Includes Technical and Functional Integration Tasks and Delivery Orders

Includes:  
PROC,  
O&M, and  
RDT&E

### RFP Activity

- SOP in Base Contract states 10 business days
- QRC / immediate requirements 1-5 business days (immediate requirements)
- Firm Fixed Price or Cost Plus Fixed Fee Contracts

### So, Why Do I Care?

- Vendors / OEMs Highlight Tactical ISR Technologies to T-REX Primes
- Innovation Through Tech Insertion
- RFI's and Capability Studies for Additional Market Research
- Key Industry and Government Points of Contact



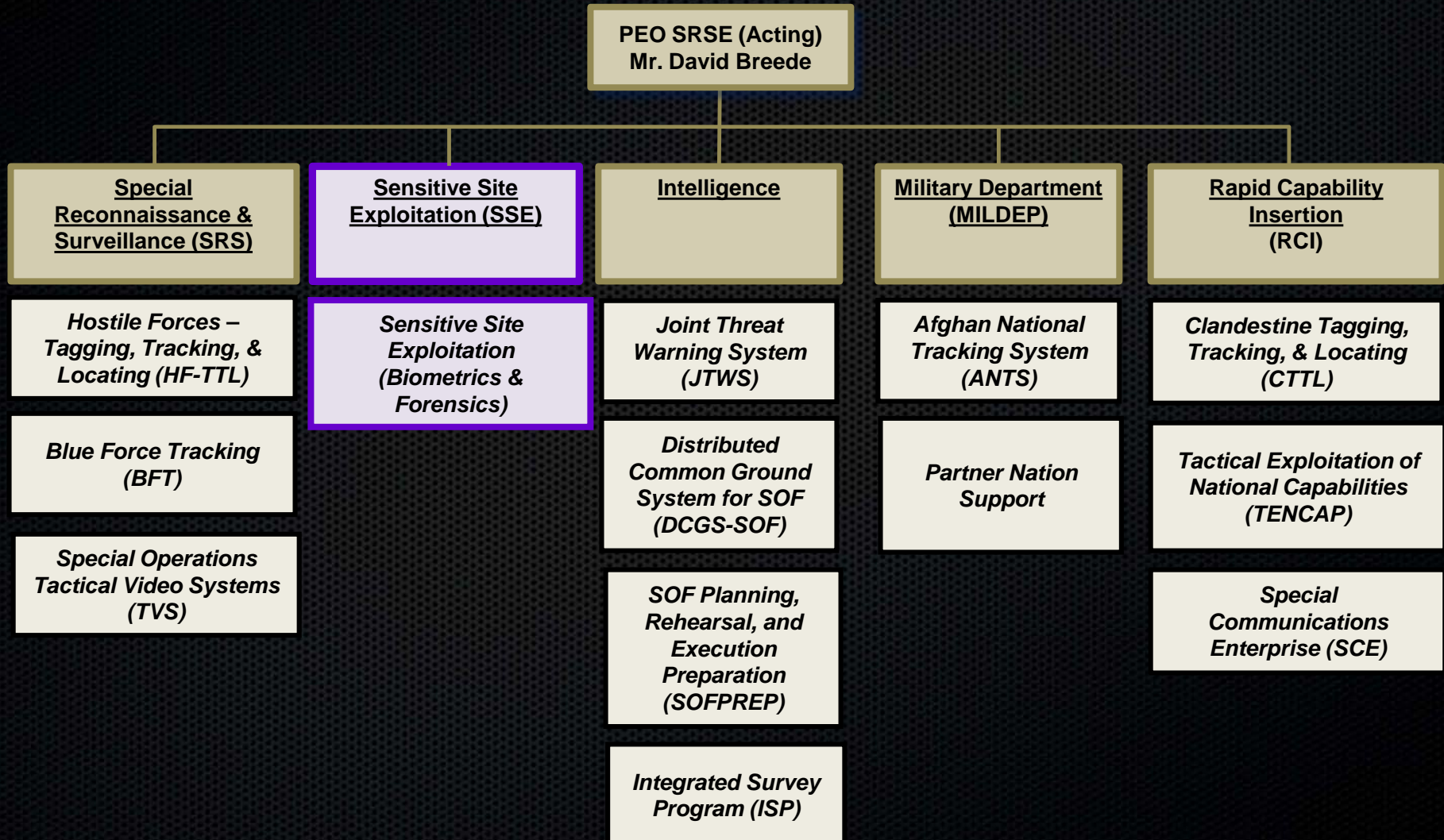
# SPECIAL OPERATIONS FORCES INDUSTRY CONFERENCE

Program Manager  
Sensitive Site  
Exploitation

SPECIAL RECONNAISSANCE, SURVEILLANCE, AND EXPLOITATION

# Program Manager

## Sensitive Site Exploitation





# Program Manager

## Sensitive Site Exploitation

### SSE Priorities

- On Site Collection of Biometrics to Verify/Enroll Subjects into DOD Authoritative Biometrics Database
- Provide Actionable Intelligence Thru the Rapid Detection, Collection, & Identification of Physical and Digital Forensic Evidence while on a Sensitive Site to enable Identity Operations



Northrop-Grumman  
BioSled



AHURA  
First Defender

### ACQUISITION STRATEGY

- Commodity Procurement Project (CPP)
- COTS / GOTS (and modified versions)

### FUNDING

| <u>APPROP</u> | <u>FY16</u> | <u>FY17</u> |
|---------------|-------------|-------------|
| • O&M         | \$ 8.9M     | \$ 12.8M    |
| • PROC        | \$ 9.9M     | \$ 2.6M     |
| • RDT&E       | \$ 0.2M     | \$ 0.2M     |

### FY16/17 Priority Efforts

- Procure/Field Tactical Biometric Devices
- Provide Rapid DNA Data Collection Capability
- Evaluate and deploy innovative DOMEX and Forensic Technologies



# Sensitive Site Exploitation – Solution Providers

## Rapid DNA



## Biometrics



## Chemical Forensics



## Electronic Media Forensics



## T-REX Primes



## Technical Support



# Program Manager

## Sensitive Site Exploitation



ID Card Printer

N-G BioSled  
Fingerprint, Facial and Iris Imagers

### Identification (ID) Kits



Kojak Multi-Fingerprint Scanner



ID Badge Printer

### Enrollment (EN) Kit

## Biometrics



Metal Tec 1500  
Metal Detector



IDEX Pens  
Explosives And Trace Element Detection



Field Forensics EL-1000



DNA Swab



Latent Print Collection



Forensic Lights

### DNA And Latent Print Collection



SIMEX-XAMN



XRY/XACT



ADF-G-2



Basic MEDEX



Advanced MEDEX

### Data And Information Extraction

SIMEX

## Tactical Site Exploitation (Forensics)

# Exploitation Analysis Center



EAC Shelter (x2)

## Trace Element Analysis



Griffin 460

## Latent Print Extraction



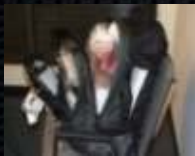
Latent Print Fuming Chambers



Latent Print Copy Station



AFIX Tracker Latent Print Examiner



Latent Print Collection Kit



BattleLite Forensic Lights



TracER Laser Lite



AHURA First Defender



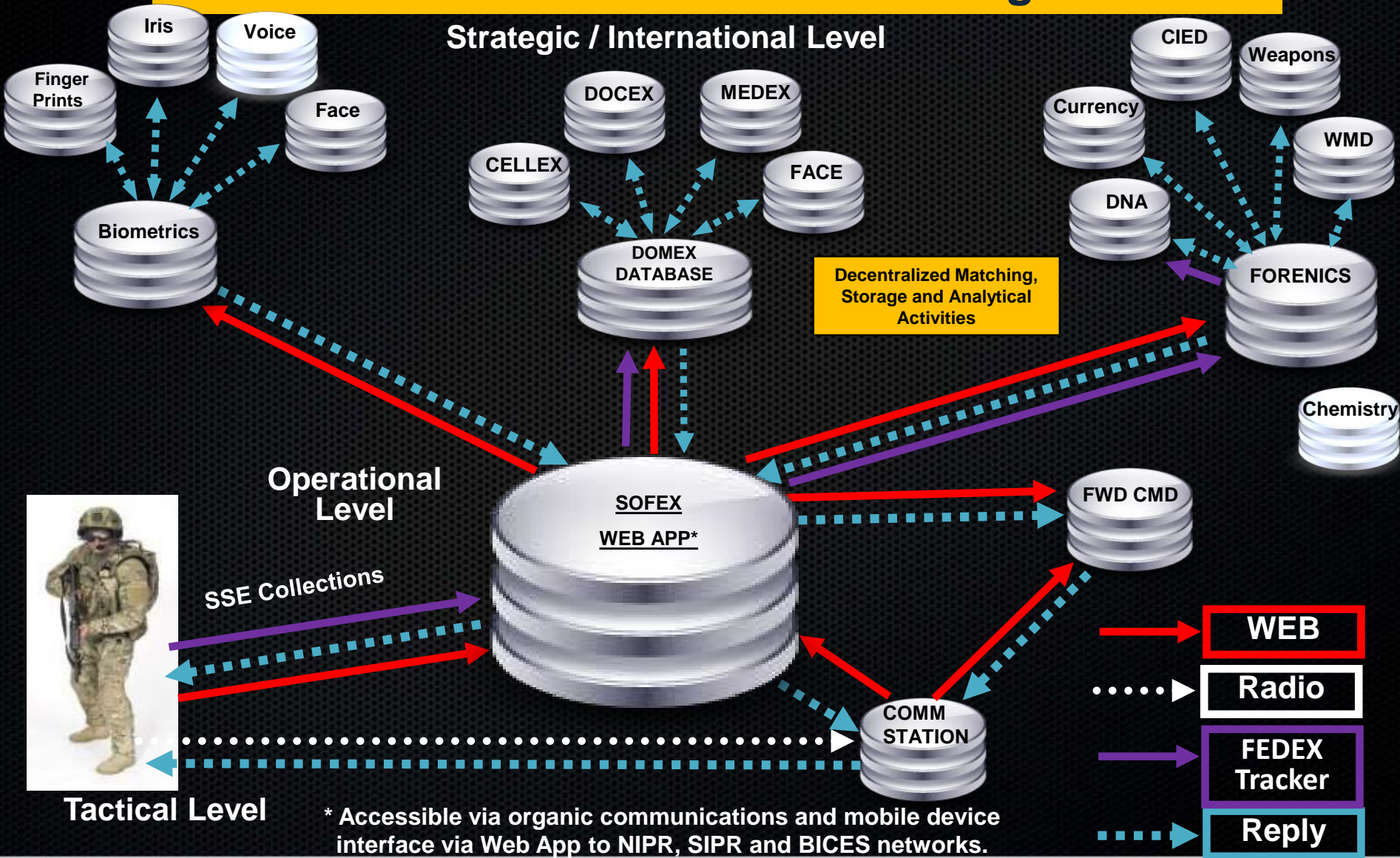
AHURA TruDefender



SABRE 5000

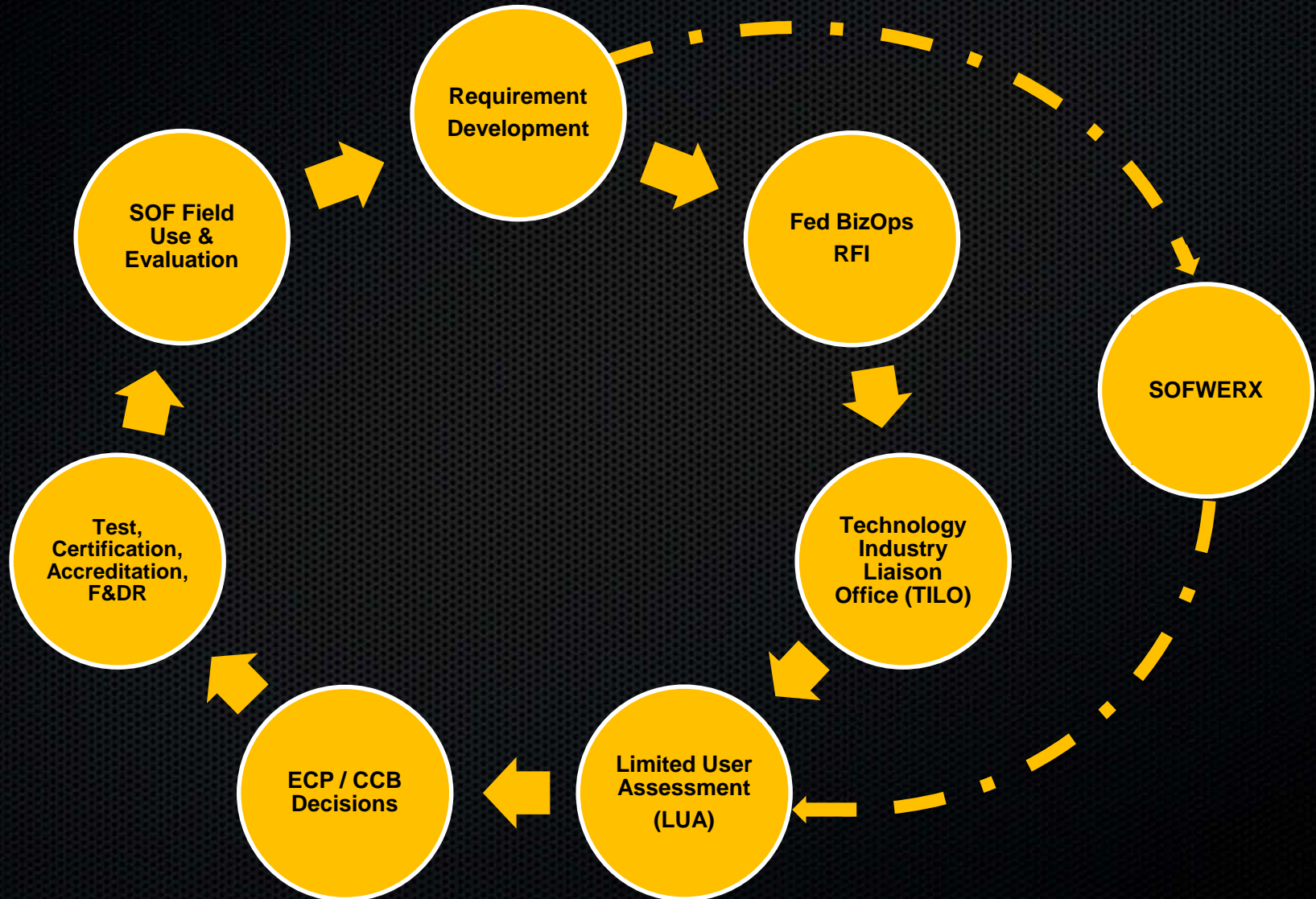
# SOF Exploitation Portal

## SOFEX Portal Enables Tx/Rx of Intelligence Data



# *Sensitive Site Exploitation*

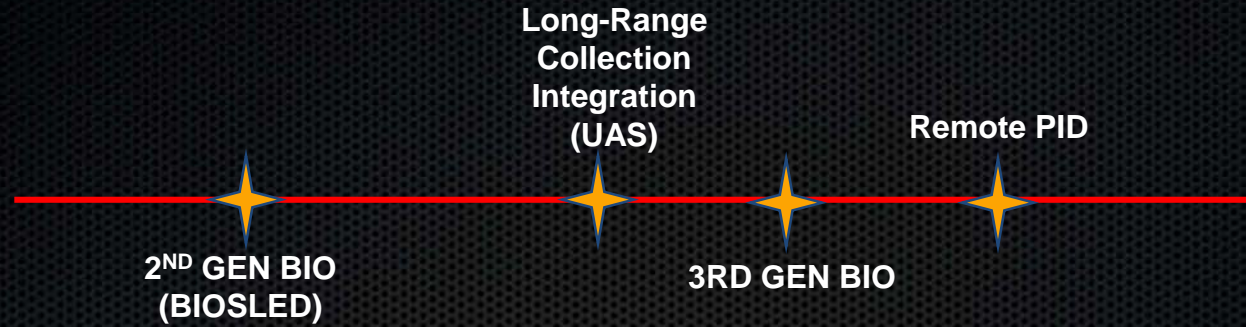
## SSE Capability Insertion or Replacement Cycle



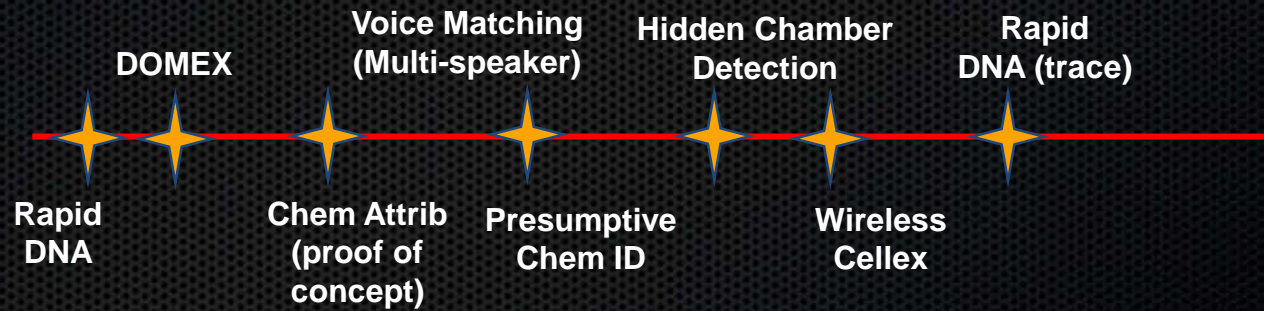
# Sensitive Site Exploitation



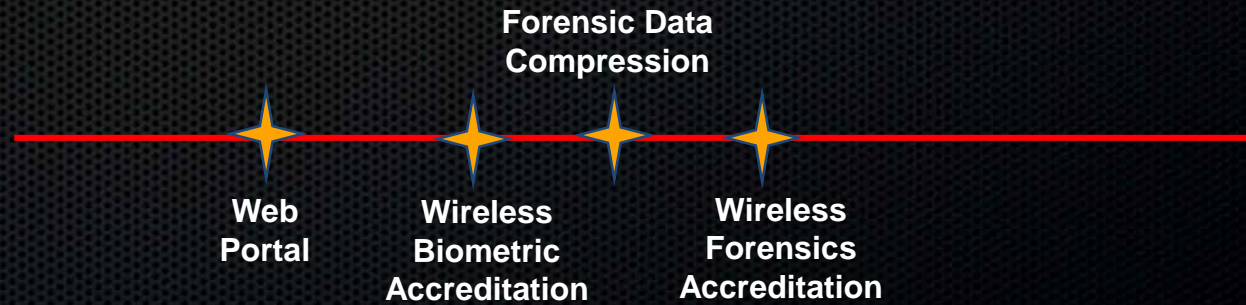
## BIOMETRICS



## FORENSICS



## MOBILE OPERATIONS



FY

16

17

18

19

20

21

22

# *Sensitive Site Exploitation*

## Capability Insertion Opportunities

- **Wireless Mobile CELLEX/DOMEX Collection Devices**
  - Cell Phone-Based Tools For Exploiting Cell Phones, SIM Cards, Computers, Storage Devices
- **Rapid Detection, Location and ID Of Forensic Evidence**
  - Body-Worn System To Detect, Locate, And Identify Forensic Evidence (Fingerprints, Body Fluid, Explosives)
- **Stand-off/Remote Facial Recognition And Iris Capture**
  - Threshold 3 Meters, Objective 300 Meters
- **Dustless Latent Print Collection**
  - Porous And Non-Porous Surfaces
- **Maritime Environment Operations**
  - At Sea Processing/Exploiting Forensic, DOMEX, And Chemical Evidence From Exploited Sites





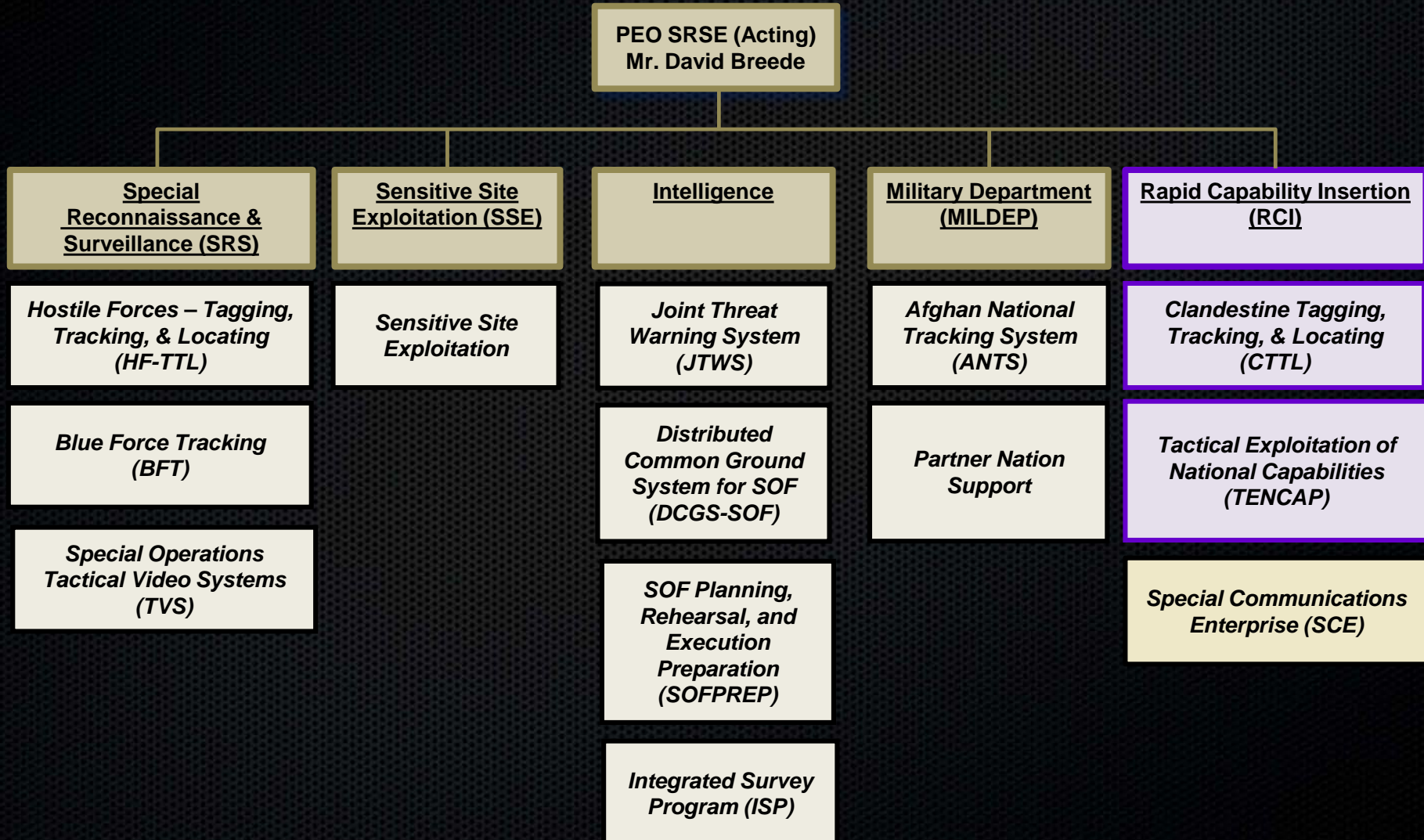
# SPECIAL OPERATIONS FORCES INDUSTRY CONFERENCE

Program Manager  
Rapid Capability  
Insertion

SPECIAL RECONNAISSANCE, SURVEILLANCE, AND EXPLOITATION

# Program Manager

## Rapid Capability Insertion



# Program Manager Rapid Capability Insertion

- Develops And Prototypes Innovative TTL Capabilities and Novel Reconnaissance Devices Through Applied Research And Development (R&D)
- Improves Sensor SWAP-C For Use On Group 2 And 3 UAS
- Serves As The Command's TENCAP Office And Leverages Existing And Future Space-Related Technologies



## ACQUISITION STRATEGY

- Rapid Prototyping, Technology Demonstrations, Combat Evaluations

## PERIOD OF PERFORMANCE

- Project Dependent: Focus On 12-18 Month Project Development Cycle

## MILESTONES

- Project Dependent

## POINT OF CONTACT

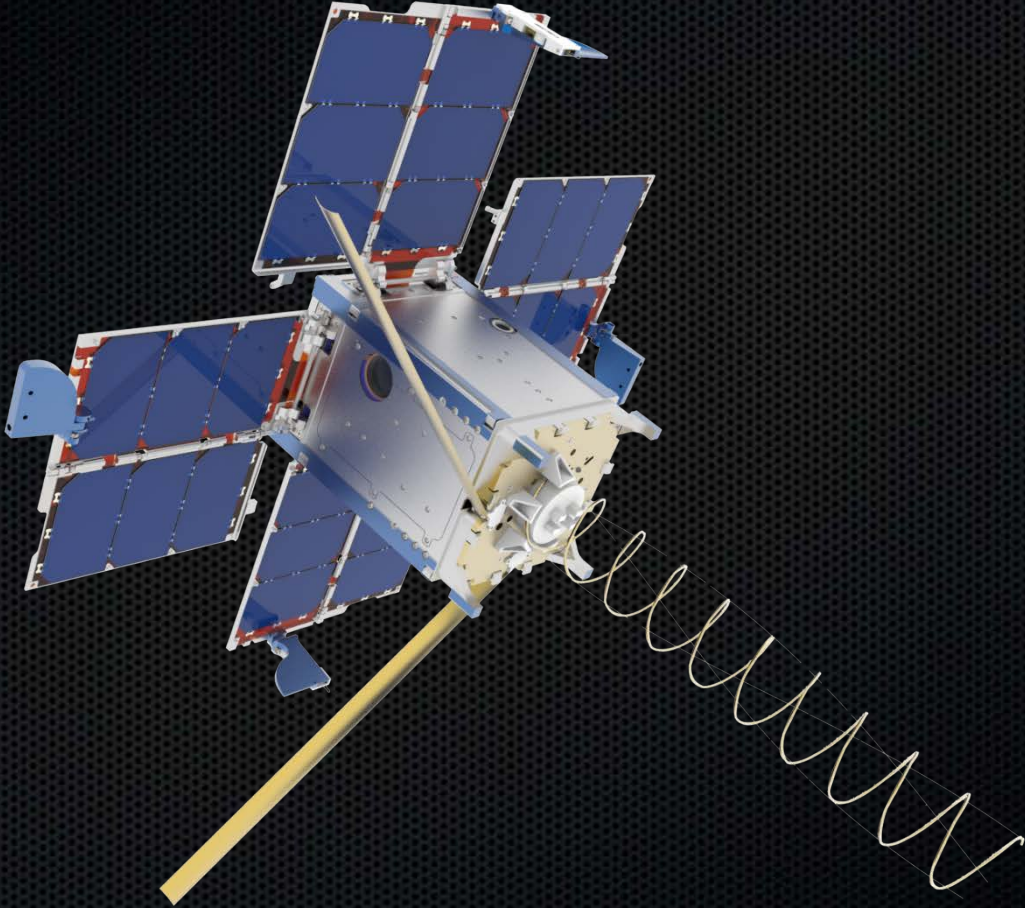
- Technology & Industry Liaison Office
- TILO@SOCOM.mil
- 813-826-9482

## FUNDING

| <u>APPROP</u> | <u>FY16</u> | <u>FY17</u> |
|---------------|-------------|-------------|
| RDT&E         | \$ 33.0M    | \$ 33.6M    |

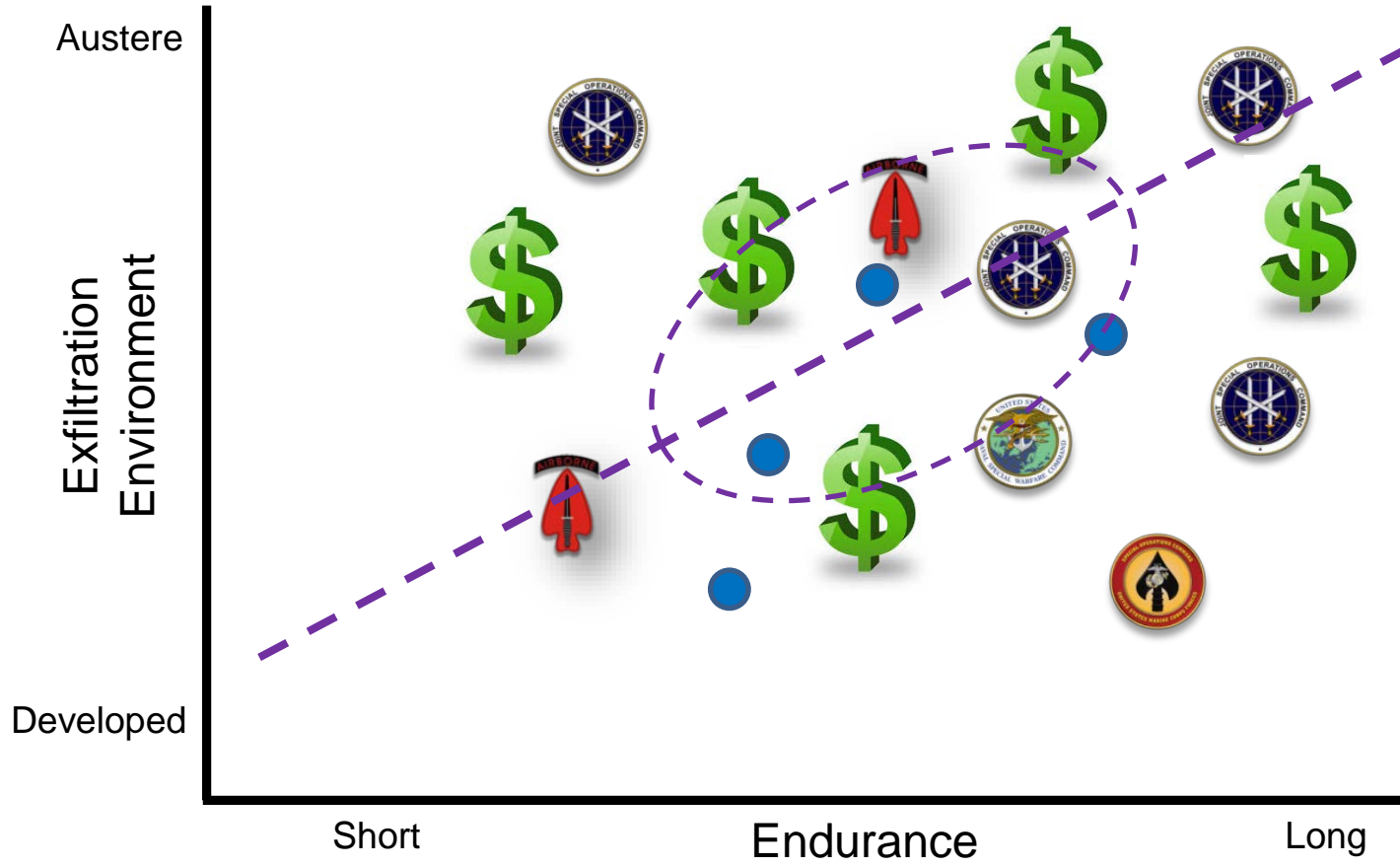
## CURRENT CONTRACT/OEM

- Project Dependent

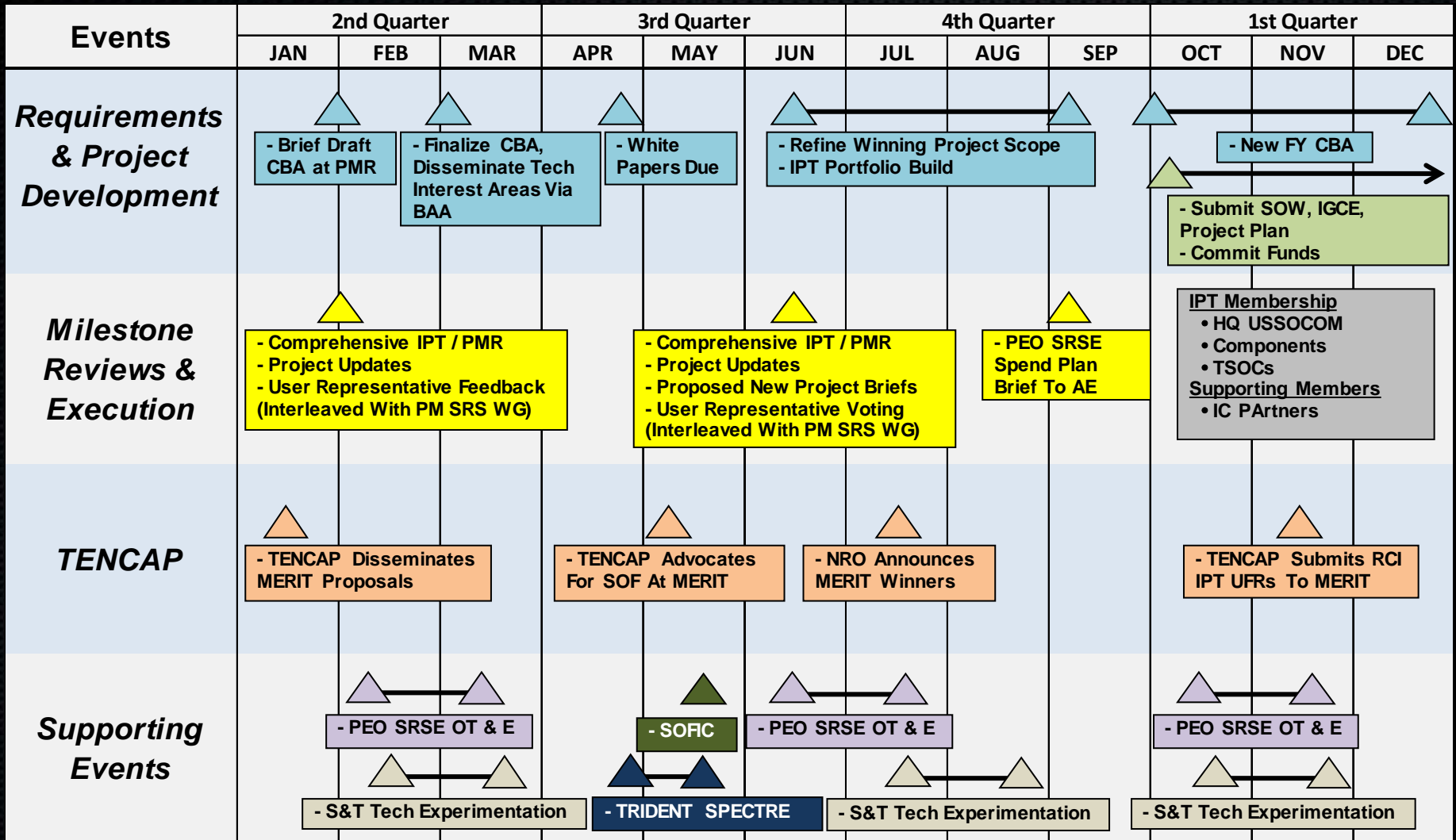


# Capabilities Based Assessment Methodology

Notional Example: Tag



# RCI Business Process

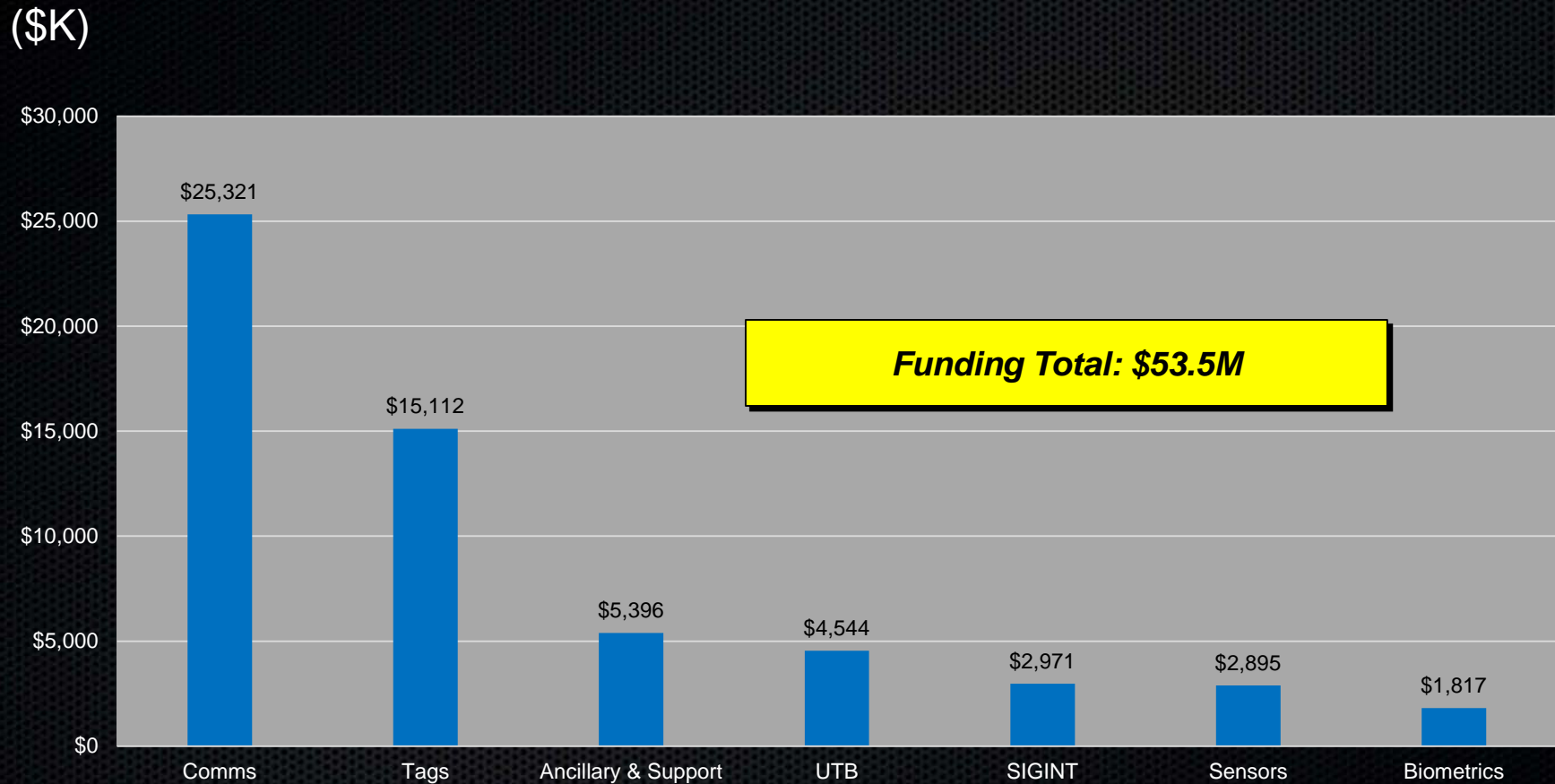


# *So, Why do you Care?*

- RCI Enables Tech Entry Point Into Programs of Record
  - Annual Quick-Look Capabilities Based Assessment
  - Broad Agency Announcement
    - USSOCOM-BAAST-2015, Expires 31 Dec 2016
  - Goal Is To Provide Rapid Transition To SOCOM Programs of Record
- Typical RCI Year
  - 19 Industry Vendors On Contract
  - 9 Small Businesses
  - Average 9 Projects Delivered To Meet User Requirements Per Year



# *FY14-15 Distribution of Funds by Technology Area*



**69% OF THE FY14-15 TOTAL SUPPORTS TWO FOCUS AREAS  
\*\*\* NOT AN INDICATOR OF FUTURE INVESTMENT**



# *Final Thoughts...*

## *Tips for a Successful BAA Submission*

- Target Specific Gap In BAA
- Propose A Product, Not A Corporate Overview
- Tell Us How You Think We'll Use It
- Know Your Customer (Note: It's Not SOF AT&L)
  
- RCI's Goal Is To Rapidly Prototype Capability To The User
  - Propose Phased Development
  - ~12-18 Month Start to Finish
  - ~ \$1M Effort



# SPECIAL OPERATIONS FORCES INDUSTRY CONFERENCE



SPECIAL RECONNAISSANCE, SURVEILLANCE, AND EXPLOITATION