



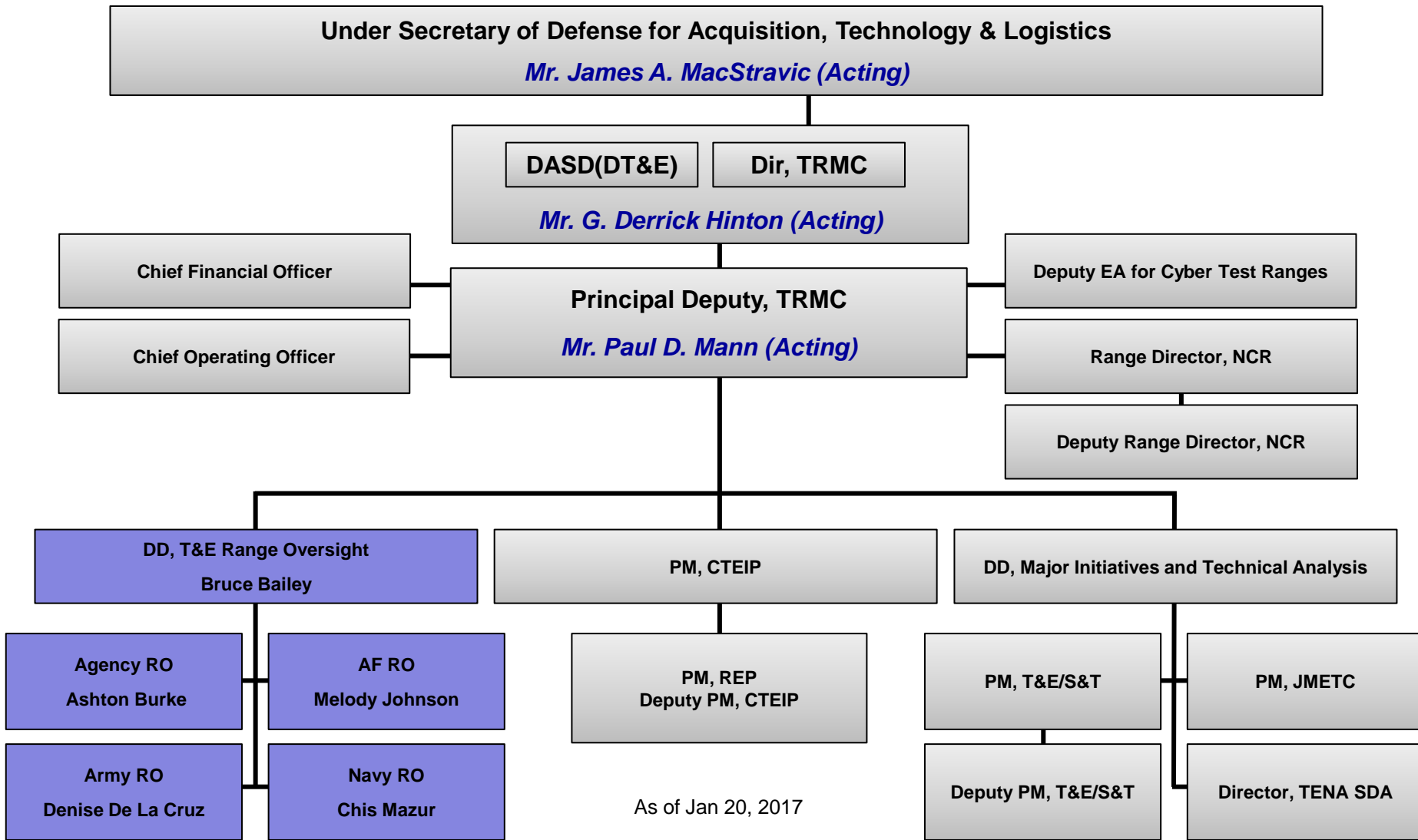
Test Resource Management Center (TRMC) Perspective

32nd Annual National Defense Industry Association Test and Evaluation
Conference

Mr. Darrin K. Loken
Test Resource Management Center
darrin.k.loken.civ@mail.mil
(571) 372-2861



TRMC Organization





TRMC Missions

DoD (Charter) Directive 5105.71



- *Plan for and assess the adequacy of the MRTFB to provide adequate testing in support of the development, acquisition, fielding, and sustainment of defense systems*
- Support the Department's objective of ensuring **compliance with DoDD 7000.14-R**
- **Review proposed significant changes** to T&E facilities and resources of the MRTFB before they are implemented by the DoD Components
- **Issue guidance** to the DoD Components, through the USD(AT&L), with respect to MRTFB planning
- Maintain an **awareness of other T&E facilities and resources**, within and outside the DoD, and their impacts on DoD requirements
- Serve as **Executive Agent for Cyber Test Ranges**

- *Complete a strategic plan for T&E not less often than once every 2 fiscal years*

- *Submit report to the SECDEF containing the comments of the Director concerning all such proposed budgets, together with the Director's certification as to whether such proposed budgets are **adequate***

- *Administer the **CTEIP** (Central Test and Evaluation Investment Program) and **T&E/S&T Program***

- Administer the **JMETC** (Joint Mission Environment Test Capability)
- Manage the **NCR** (National Cyber Range)

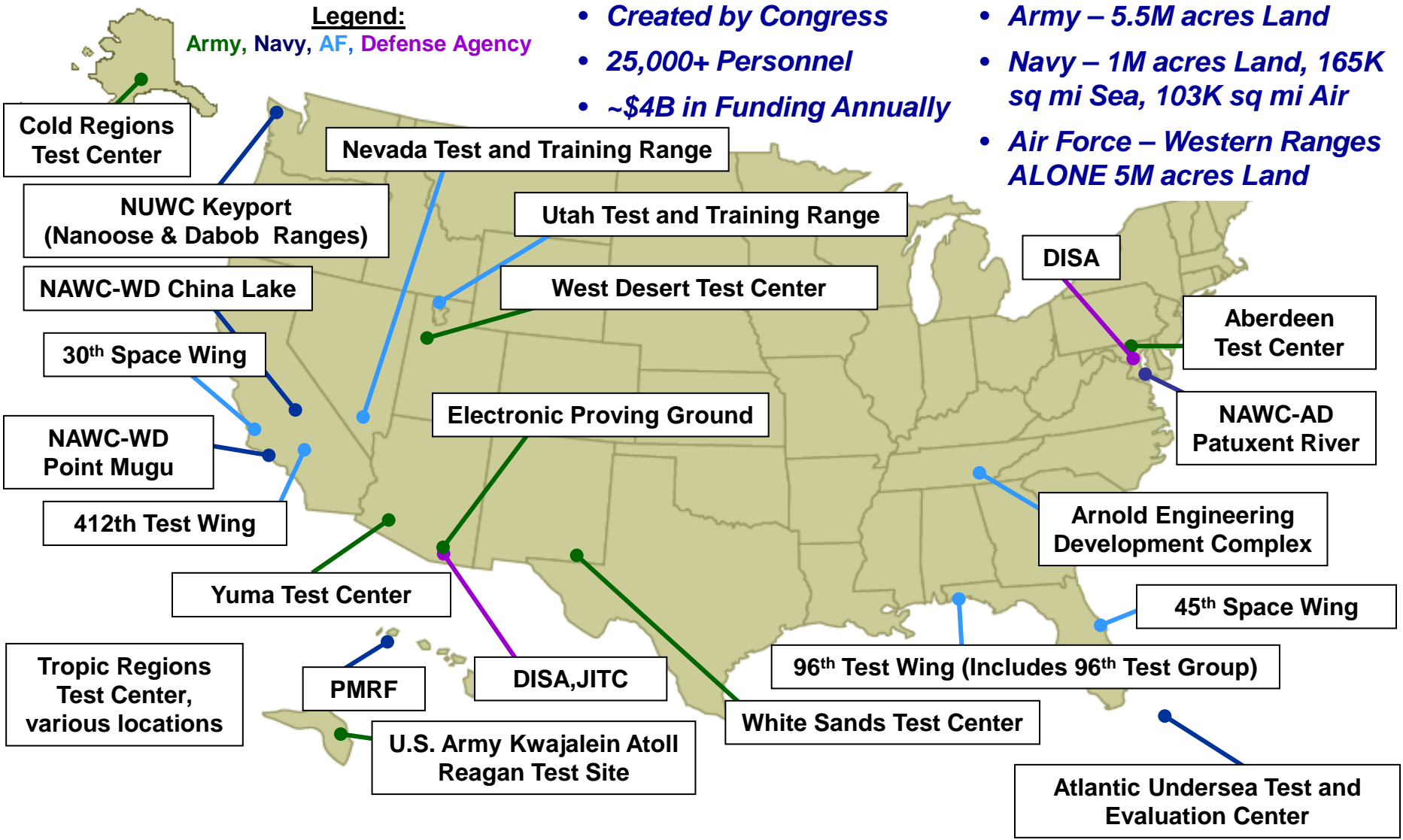
Statutory **Regulatory**



The STEWARD of the DoD Test Infrastructure

Major Range and Test Facility Base (MRTFB): The "Critical Core"

23 Sites: Army-8; Navy-6; Air Force-7; Defense Agency-2





Department Policy on MRTFB Scheduling



- **Department of Defense Directive 3200.11, *Major Range and Test Facility Base*:**
 - “Scheduling of the MRTFB shall be based upon a priority system that gives equitable consideration to all DoD Components and accommodates DoD acquisition program priorities”
- **Department of Defense Instruction 3200.18, *Management and Operation of the MRTFB*:**
 - “Scheduling of the MRTFB shall be based upon a priority system that gives equitable consideration to all DoD Components. Does not discriminate among DoD programs on the basis of DoD Component sponsorship, and accommodates DoD acquisition program priorities”
 - “Scheduling conflicts among DoD users that cannot be resolved through the MRTFB component chain of command may be referred by the DoD Component(s) to the Director, TRMC, for further mediation”
 - “Commanders or directors of activities managing MRTFB facilities and ranges shall establish guidelines for the use of MRTFB facilities and ranges by non-DoD users”
- **Army Regulation 73-1, *Test and Evaluation Policy*:**
 - Scheduling of test resources will be IAW DODD 3200.11.
 - Without compromising primary responsibility to DOD customers, MRTFB commanders will assure equitable consideration for commercial customers and non-DOD users at their facilities IAW DODD 3200.11.
- **Navy, OPNAVINST 3900.25C, *Major Range and Test Facility Base*:**
 - Implements DODD 3200.11 across all Navy Test and Evaluation activities.
 - The provisions apply to all users of the Major Range and Test Facility Base (MRTFB) and to all echelons responsible for management and administration of those MRTFB capabilities
- **Air Force Instruction 99-109, *MRTFB Test and Evaluation Resource Planning*:**
 - Implements Air Force Policy Directive (AFPD) 99-1, *Test and Evaluation Process*
 - Scheduling of test resources will be IAW DODD 3200.11 and DODI 3200.18.

IAW DoDI 3200.18, unresolved scheduling conflicts may be referred to the Director, TRMC, for further mediation



Range Scheduling Deconfliction Guidelines



Range Commanders Council (RCC) Document 556-16

- *Range Scheduling Deconfliction Guidelines*

- Provides a common set of guidelines & information to facilitate orderly inter-range scheduling
- Identifies each range's scheduling priorities and procedures, points of contact, and other areas of consideration
- Intended for use by both range managers and users/customers of DoD National Ranges and MRTFBs
- In the case of range operations or programs that utilize multiple ranges, the lead range will determine the user's operational requirements and schedule necessary range time/assets with support ranges
- Conflicts are resolved at the lowest supervision level possible

Each MRTFB Activity has a Scheduling and Deconfliction Process



Questions?