

Modernization and Capabilities of the Lawrence Livermore National Laboratory Pilot Facility for Remotely Controlled Energetic Materials Synthesis

Insensitive Munitions and Energetic Materials Technology Symposium,
Portland, Oregon

April 22-26, 2018

Nathaniel B. Zuckerman

P. F. Pagoria, A. J. DeHope, E. F. Virgin III, F. E. Wade, W. L. Collins, B. K. Parsons



LLNL-PRES-748549

This work was performed under the auspices of the U.S. Department of Energy by Lawrence Livermore National Laboratory under Contract DE-AC52-07NA27344. Lawrence Livermore National Security, LLC

LLNL Energetic Materials Synthesis Group

- Six PhD synthesis chemists with primary residence in the LLNL High Explosives Applications Facility (HEAF, Site 200)

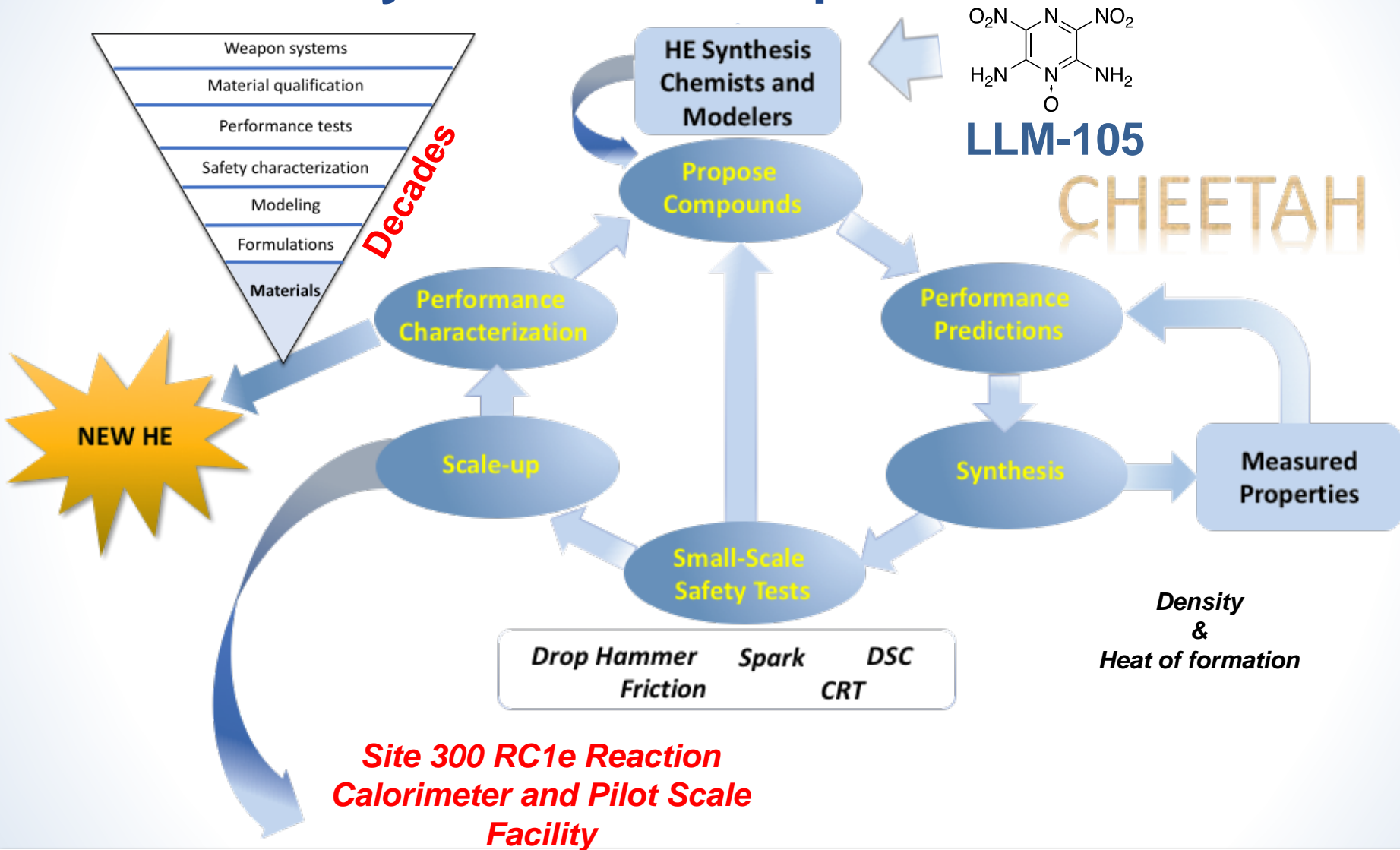


LLNL Energetic Materials Synthesis Group

- Six PhD synthesis chemists with primary residence in the LLNL High Explosives Applications Facility (HEAF, Site 200)
- **Focus:** Synthesis of new insensitive high explosives (IHE) and conventional high explosives (CHE)
- Synthesis group supports :
 - Basic explosives R&D
 - Stockpile stewardship
 - Counterterrorism
 - Development of HE for military and commercial use



LLNL HE Synthesis Developmental Process



LLNL HE Synthesis Developmental Process

- **Small-scale R&D:** Aim to provide enough information on new HE to “put it on the shelf” and make it available as needs arise from customers.
 - Safety testing: Friction, spark, impact, thermal stability.
 - Heat of formation, density and small scale performance
- **Down-select and scale-up:** Perform small scale reaction calorimetry and synthesize multi-gram quantities.
 - Formulation and pressing studies, ODTX, detonation calorimetry
- **Pilot Scale Process:** Full safety analysis of a synthetic process before pilot scale synthesis conducted. Aim to make 1-2 kg scale before transitioning process outside LLNL.

LLNL working toward enhancing efficiency of new material qualification.

LLNL and Site 300 HE Synthesis Capability

- **HEAF synthesis capabilities:** 1 kg, typically < 95 g.
 - Small-scale safety testing, calorimetry, and performance testing.
- **Livermore's Experimental Test Site, Site 300 (S300):** Provides pilot scale synthesis and formulation capabilities for several kilogram quantities of HE (827D).
- **S300 synthesis capabilities have not been utilized since 2013.**

HEAF Bench Scale

(A) Round bottom flask,
(B) Automated
synthesis work station,
(C) Modular continuous
flow reactor



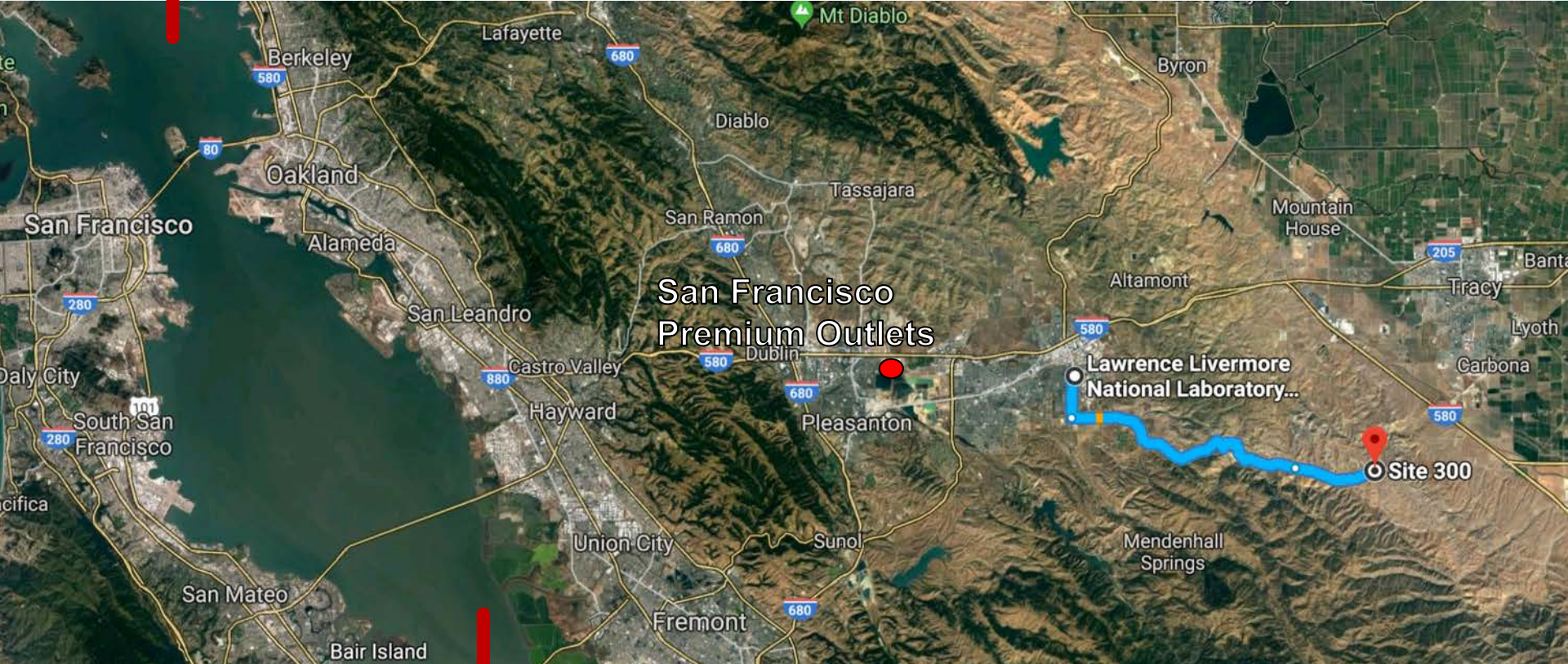
Need for Pilot Scale HE Synthesis at LLNL

- Viable new HE materials must have a scalable and cost effective synthetic and purification process.
- Determination of viability requires significant material for testing.
 - *Sub-100 g quantities*: initial handling safety, chemical and physical properties, and small-scale performance testing.
 - *Multi-kilo quantities*: required for formulation, pressing, and large scale performance and safety studies.
- Design and planning for the modernization and renovation of 827D began in early 2016 with subcontractor Hart Design Group (Cumberland, Rhode Island).
- **LLNL HE chemists strive to transition a fully scalable synthesis and purification process for new materials.**

LLNL is dedicated to R&D and is not a production facility.

San Francisco Bay area and Site 300

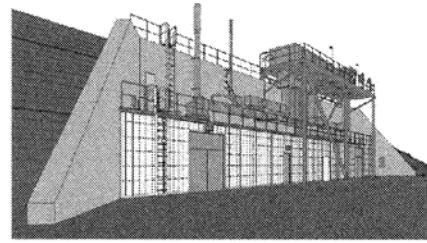
Napa
↑



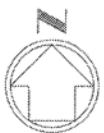
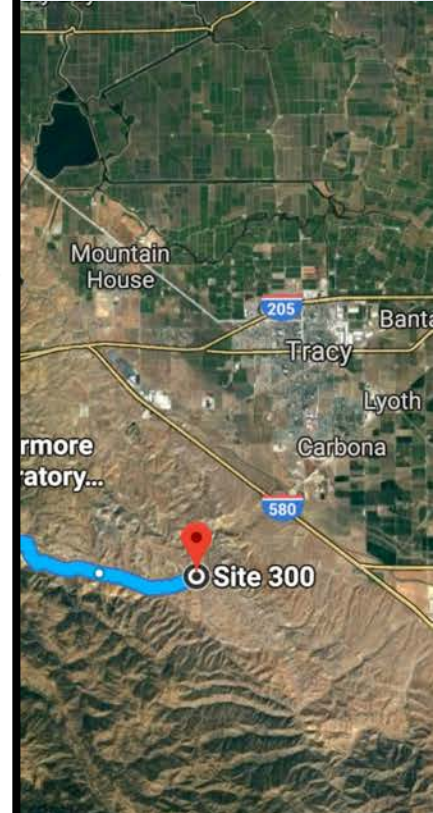
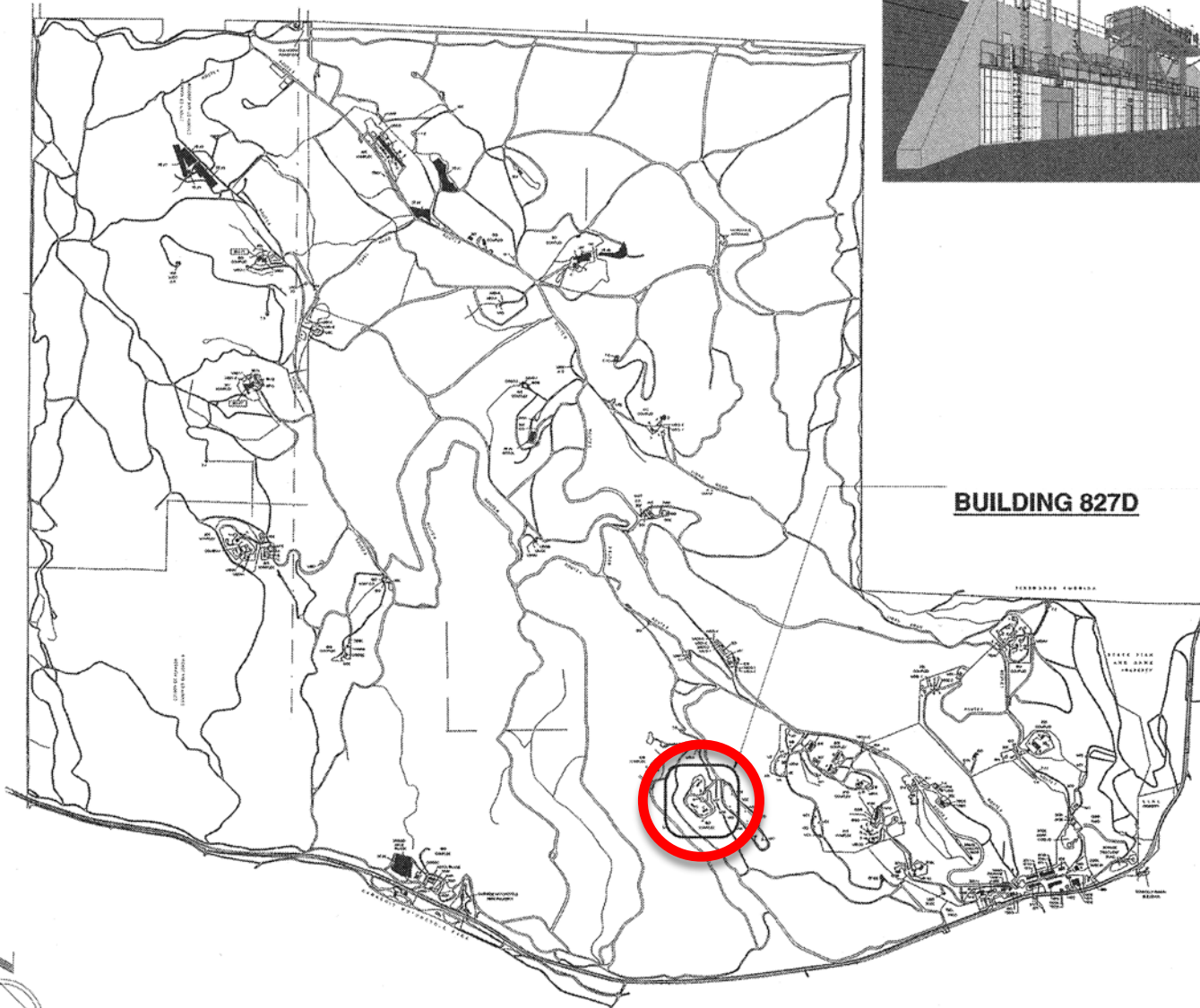
↓

San José

Google Maps



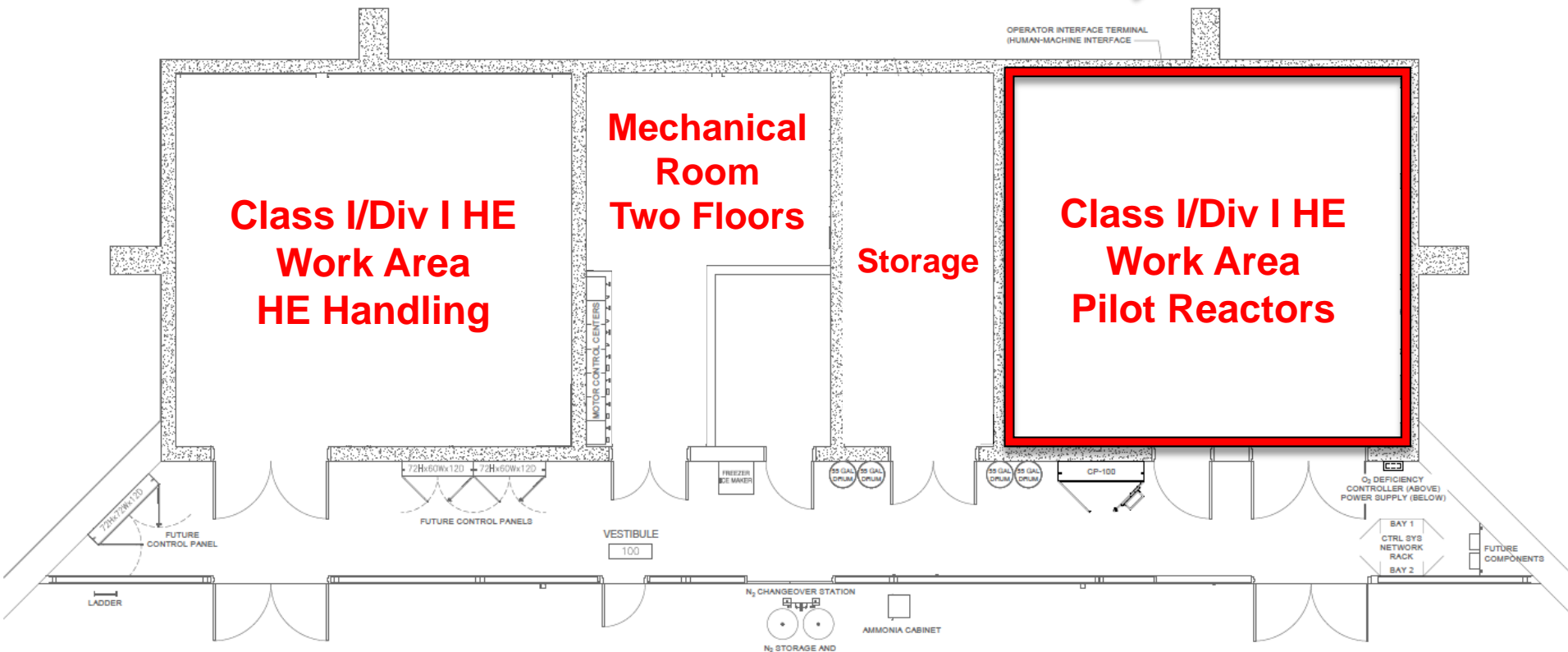
BUILDING 827D



Site 300: 7,000 acres rural foothills

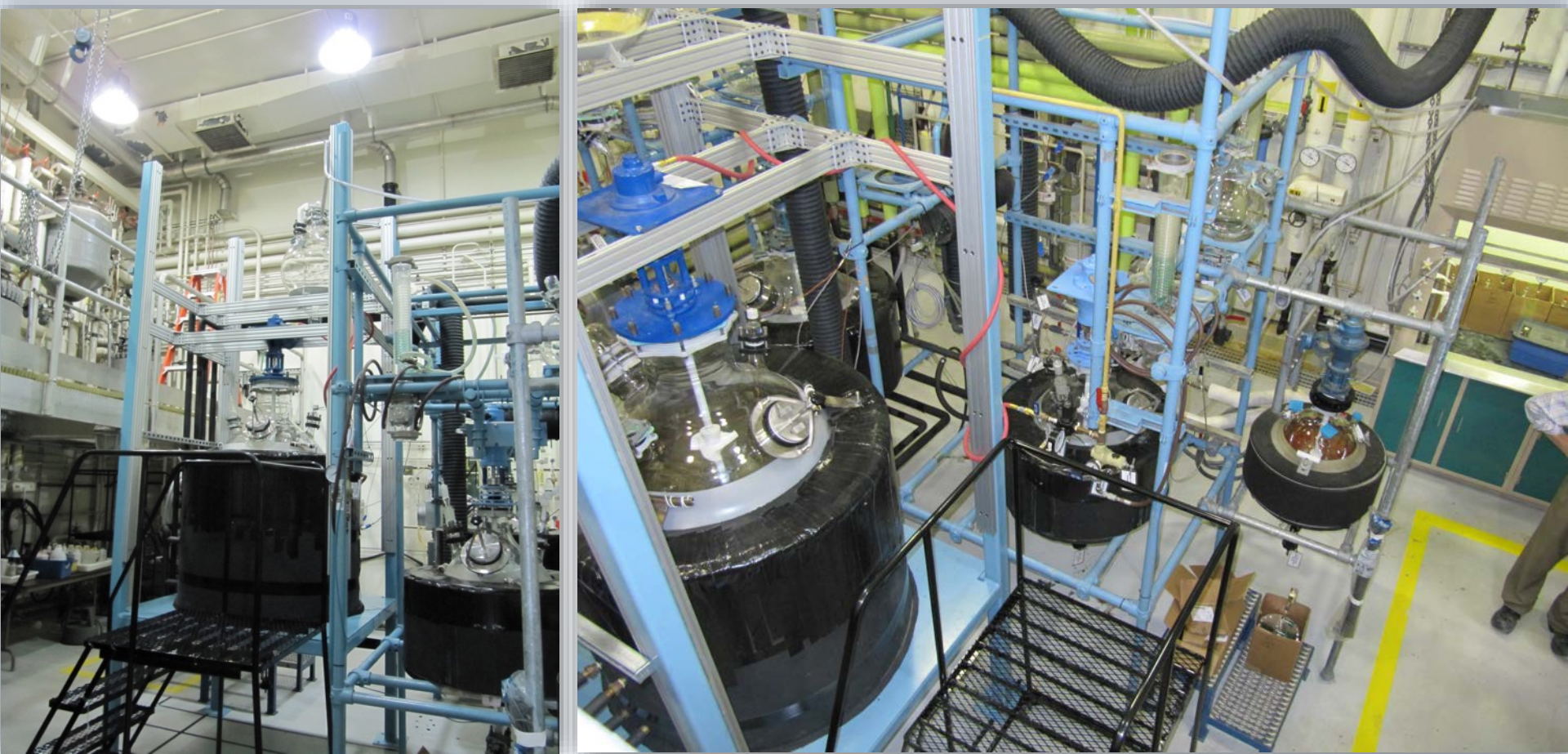
HE Synthesis: 827D First Floor Layout and Former Utilization of Space

827A Control Room



827A Control room about 150 yards away

Former Glass Pilot Scale Reactors



Out of commission since 2013 and demoed in 2015.

Pilot Facility Operations in Recent Past

- Pilot operations were hands on, contact operations: “bucket” chemistry.
- Heavily reliant on operator monitoring of processes and manual transfers of hazardous chemicals.
- Capability for remote operations were very limited.



Safety driven renovation and modernization began in 2015.

Modernization Project Focused on Remote Capabilities and an Agile Facility

- As an R&D facility, flexibility in synthesis is required.
 - Very difficult (and expensive) to meet the demands of all chemistry in one system.
- Desire to convert hands-on processes to majority remote processes adds difficulty and cost.
 - Specialized custom software required.
 - In-situ reaction and process monitoring required.
- A completely remote system is extremely cost-prohibitive and not necessary for all steps in a process.
- Agility can be added by having modular reactors and separate scalable capabilities: continuous flow processes, high pressure reactors, and pilot vessels of varied materials of construction.

Recipe for an Agile Pilot Facility

- 8 chemical processes were considered that encompass the entire range of anticipated synthesis schemes to develop the list below:

Pilot Reactors

- 50L Pfaudler w/sample loop (future)
- 100L Pfaudler w/sample loop
- 200L Pfaudler

Process Analytical Technology (PAT)

- Raman spectrometer
- pH Meter
- Canty particle sizer
- Reaction monitoring camera

Ancillary Equipment

- Solids addition conveyor
- Molten addition funnel
- Remote liquid reagent addition
 - Air operated diaphragm pumps
 - Piston metering pump
- Ammonia gas cabinet
- Nutsche filter
- Bag filter
- Tantalum condensers
- RC1e reaction calorimeter

Fully integrated industrial control software.

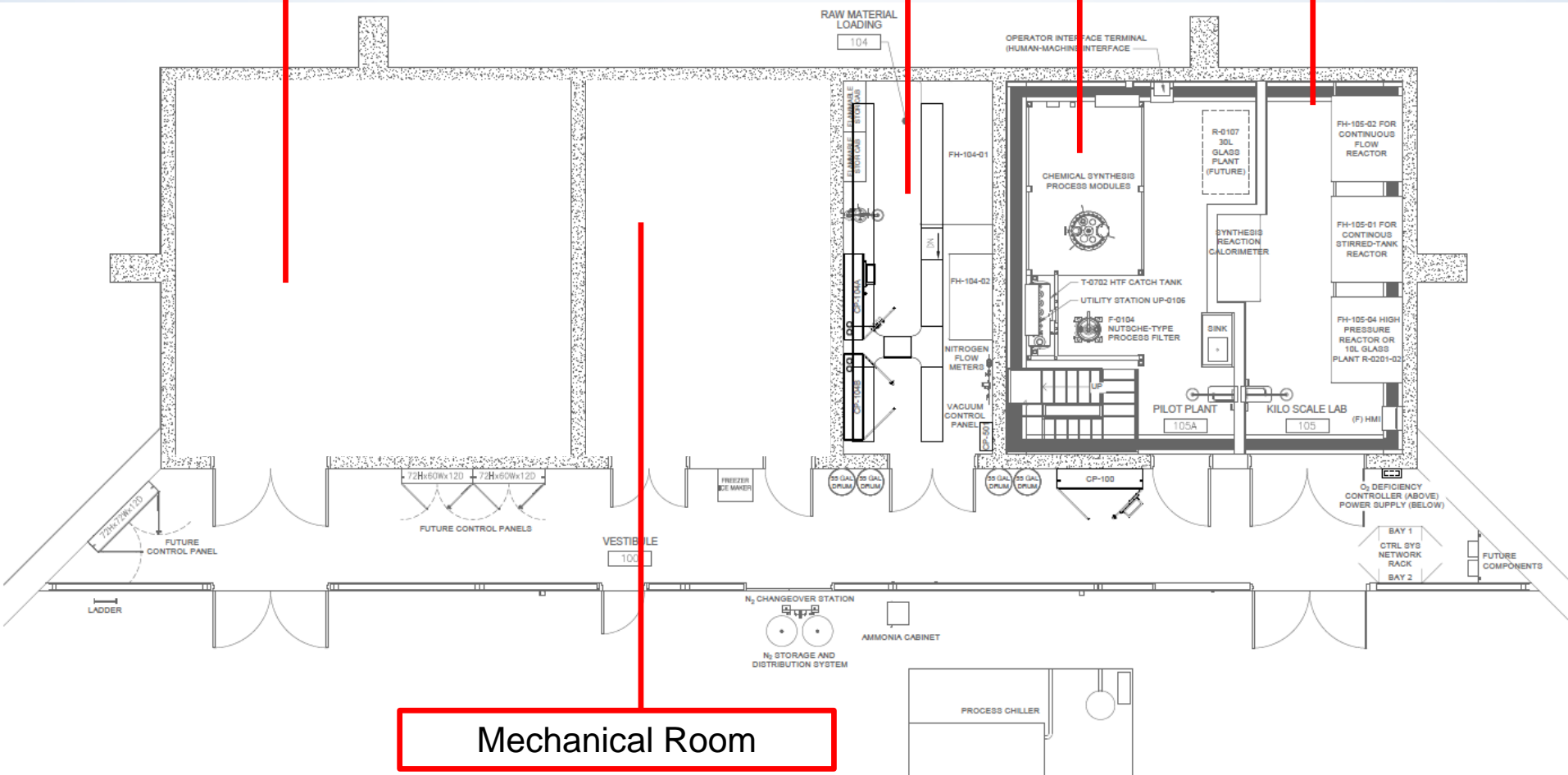
Renovated 827D First Floor Layout

HE Powder Processing

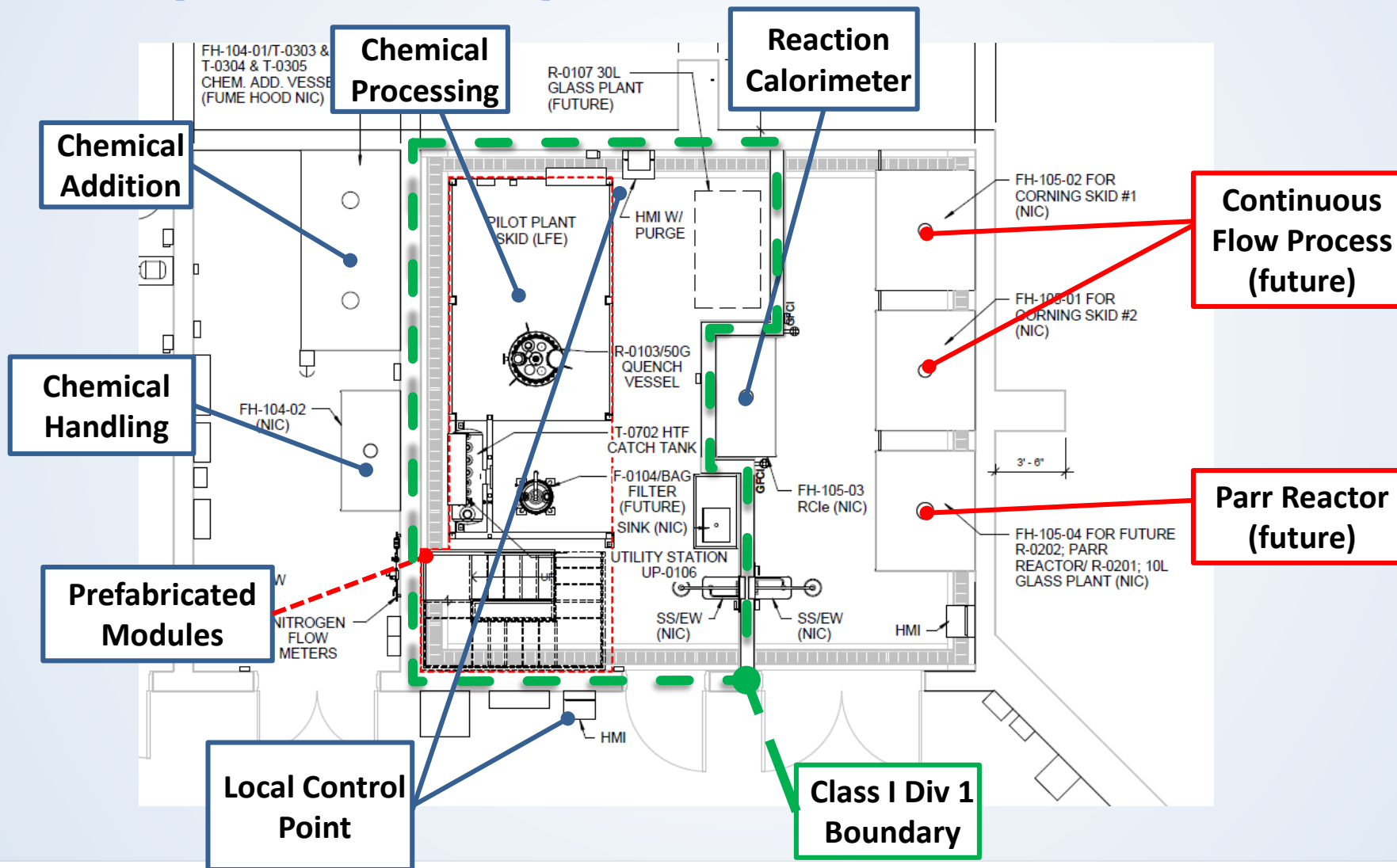
Remote Reagent Delivery

Pilot Skid

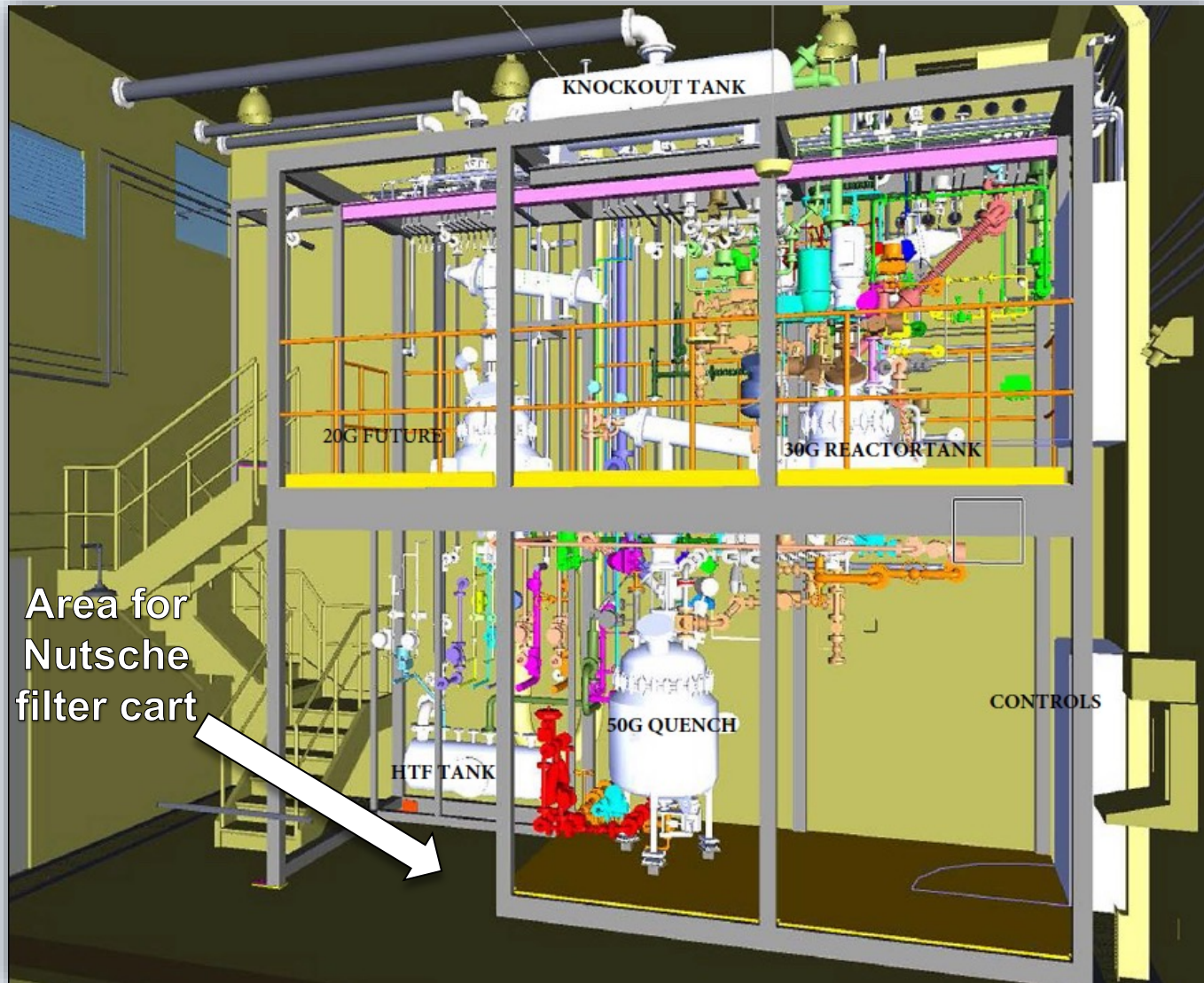
Contact Synthesis Area



Pilot Skids, Reagent Delivery, and General Purpose Scale-up area



3D Model of Pilot Reactor Skid



Constructed Pilot Skid



Pilot Skids at
Fabrication:
Hart,
Cumberland, RI

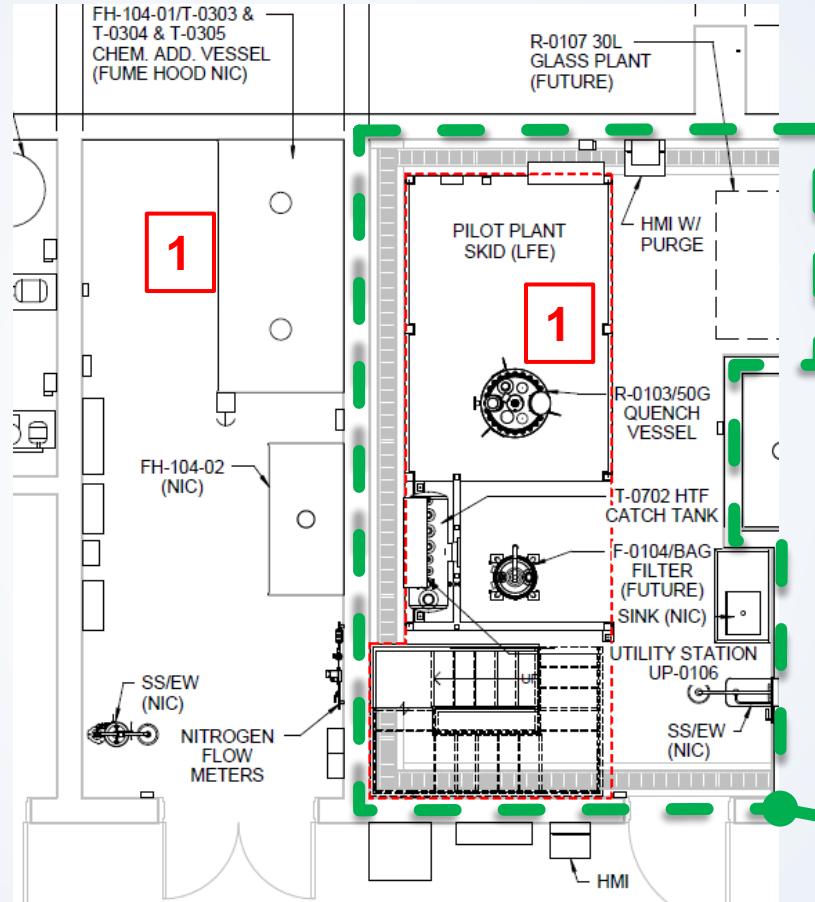
Pilot Skid Critical
Lift and Installation:
B827D, Site 300



Typical Synthetic Process in Pilot Skid: Nitration

1. Load liquid and solid reagents

Contact operation conducted in a fume hood.

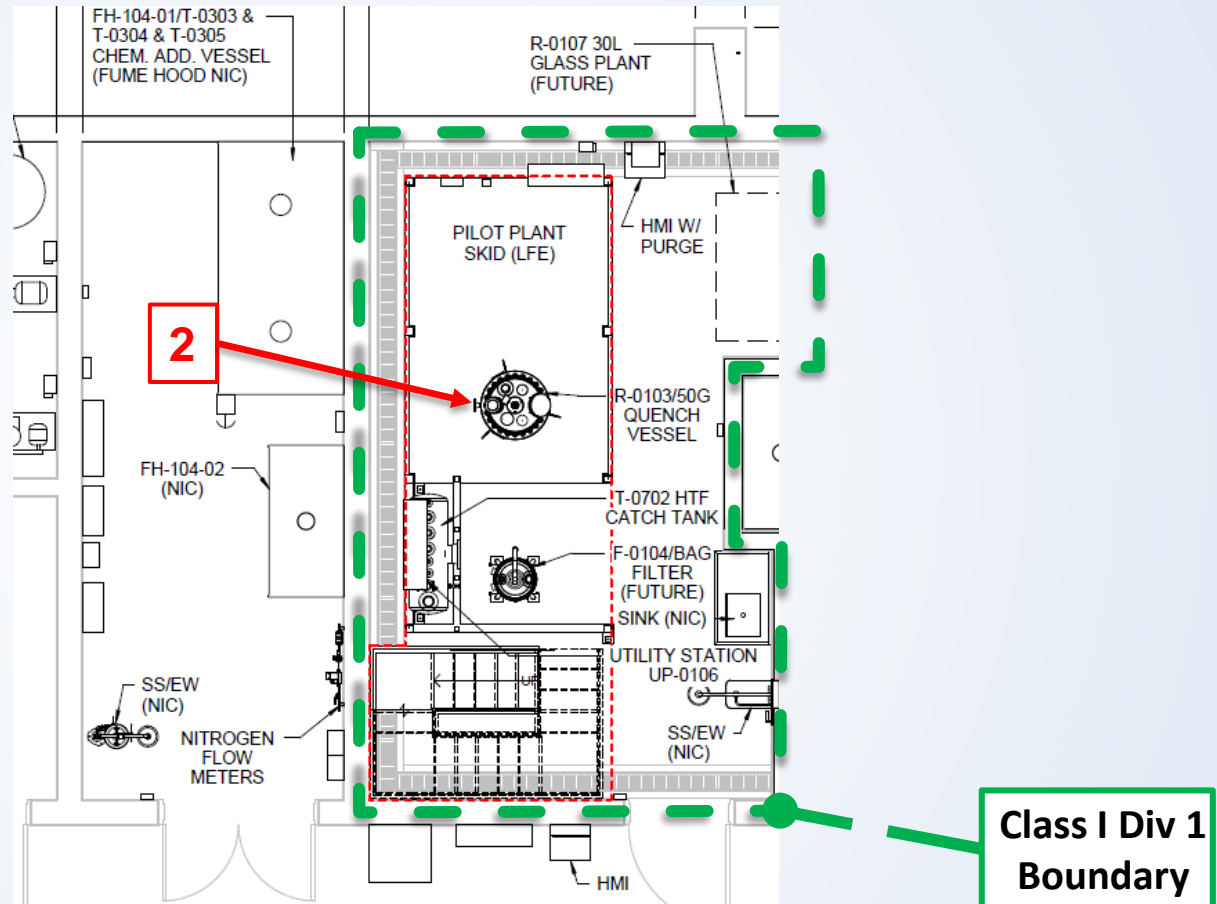


Class I Div 1 Boundary

Typical Synthetic Process in Pilot Skid: Nitration

1. Load liquid and solid reagents
2. Charge solvent (sulfuric acid)

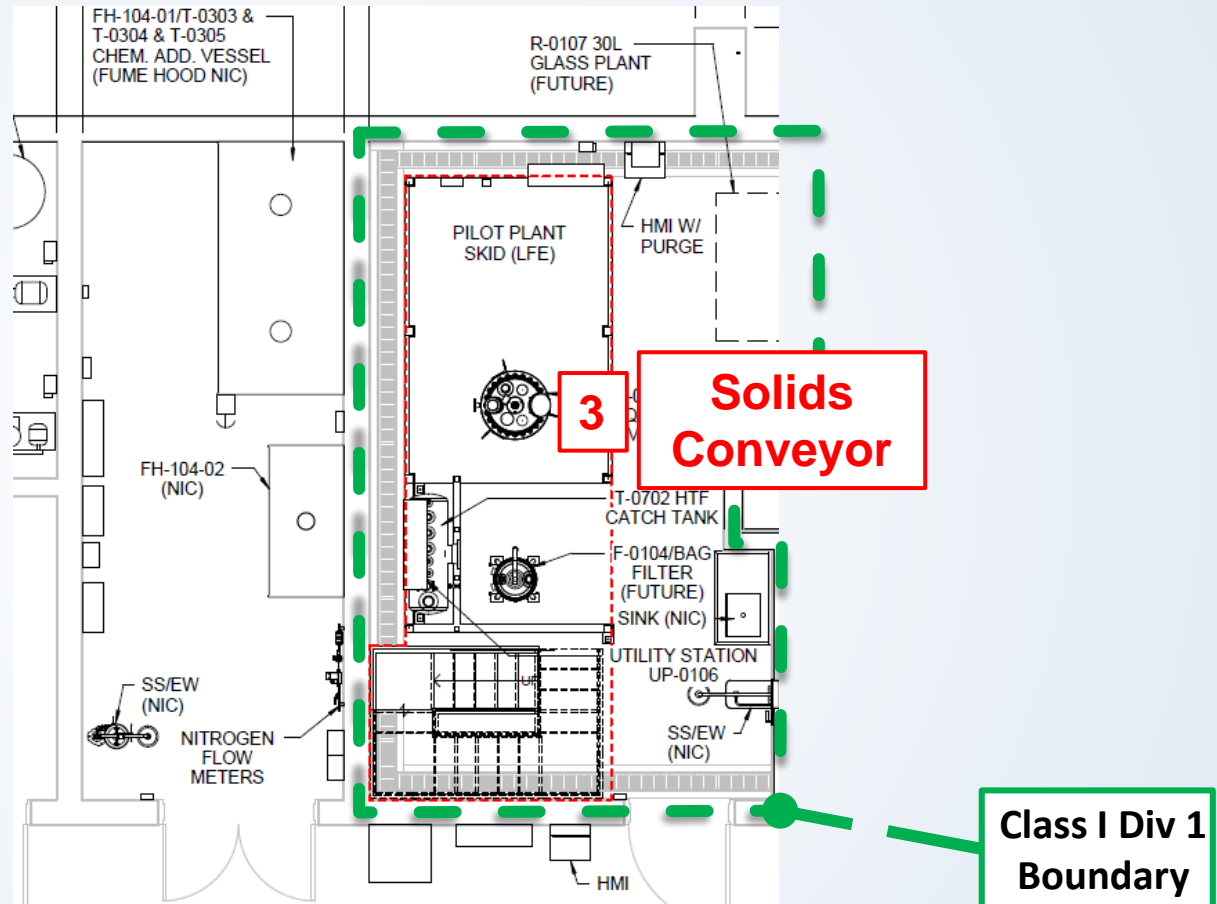
Remote operation conducted from any of the HMI stations.



Typical Synthetic Process in Pilot Skid: Nitration

1. Load liquid and solid reagents
2. Charge solvent (sulfuric acid)
3. Dose/dissolve starting material.

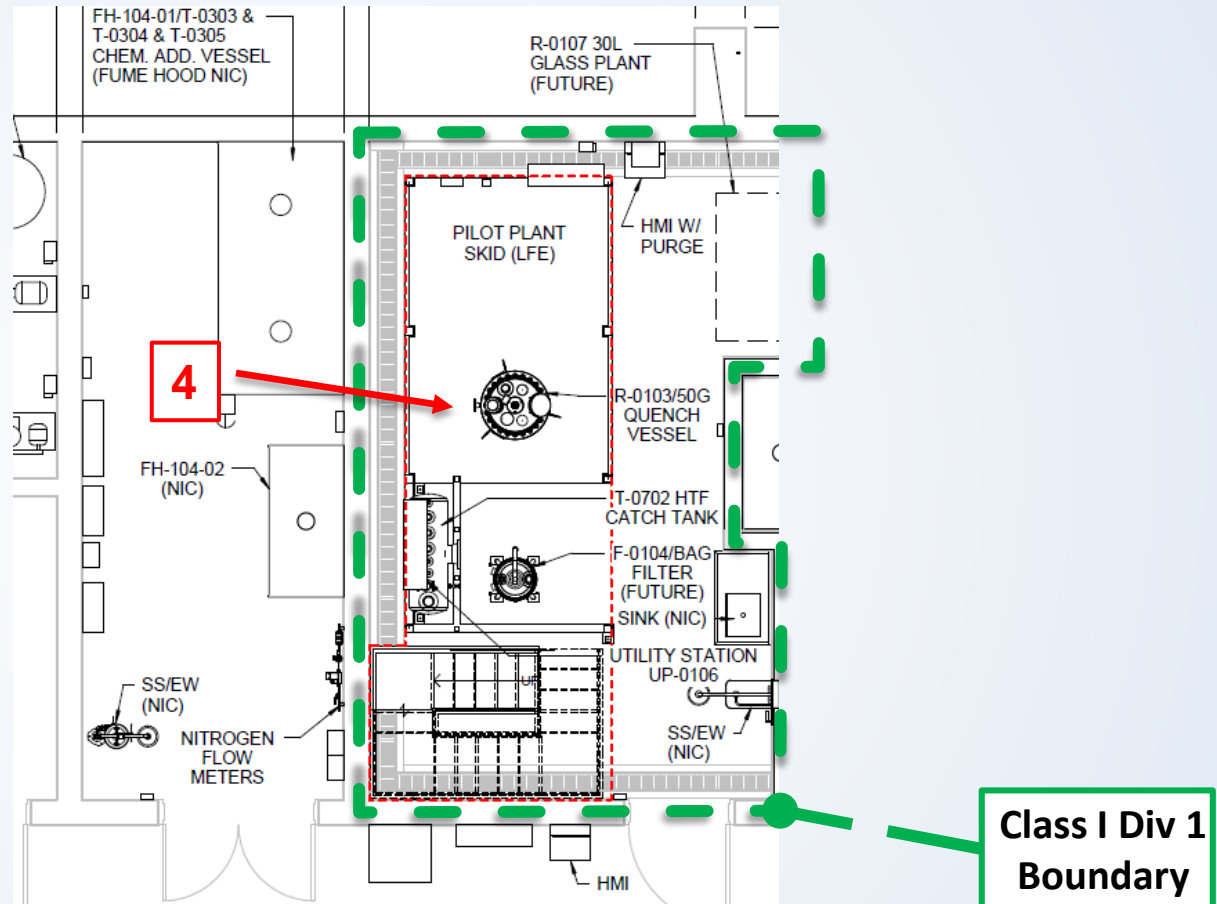
**Remote operation
from HMI.**



Typical Synthetic Process in Pilot Skid: Nitration

1. Load liquid and solid reagents
2. Charge solvent (sulfuric acid)
3. Dose/dissolve starting material.
4. Dose nitric acid.

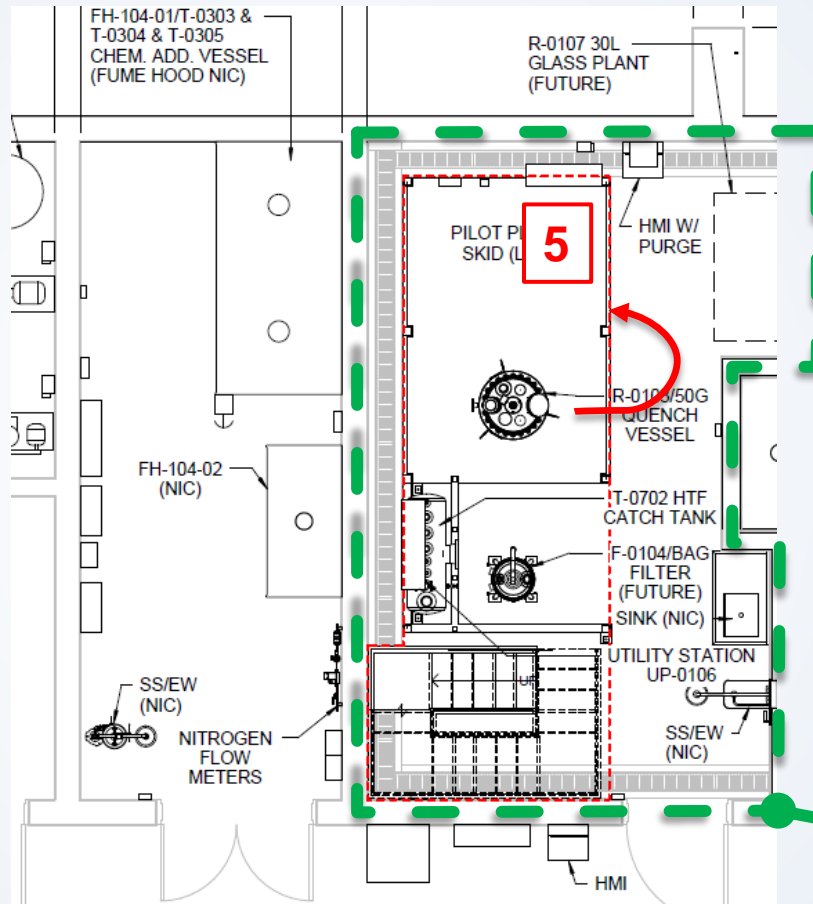
**Remote operation
from Control
Room.**



Typical Synthetic Process in Pilot Skid: Nitration

1. Load liquid and solid reagents
2. Charge solvent (sulfuric acid)
3. Dose/dissolve starting material.
4. Dose nitric acid.
5. Quench Reaction

**Remote operation
from control
room.**

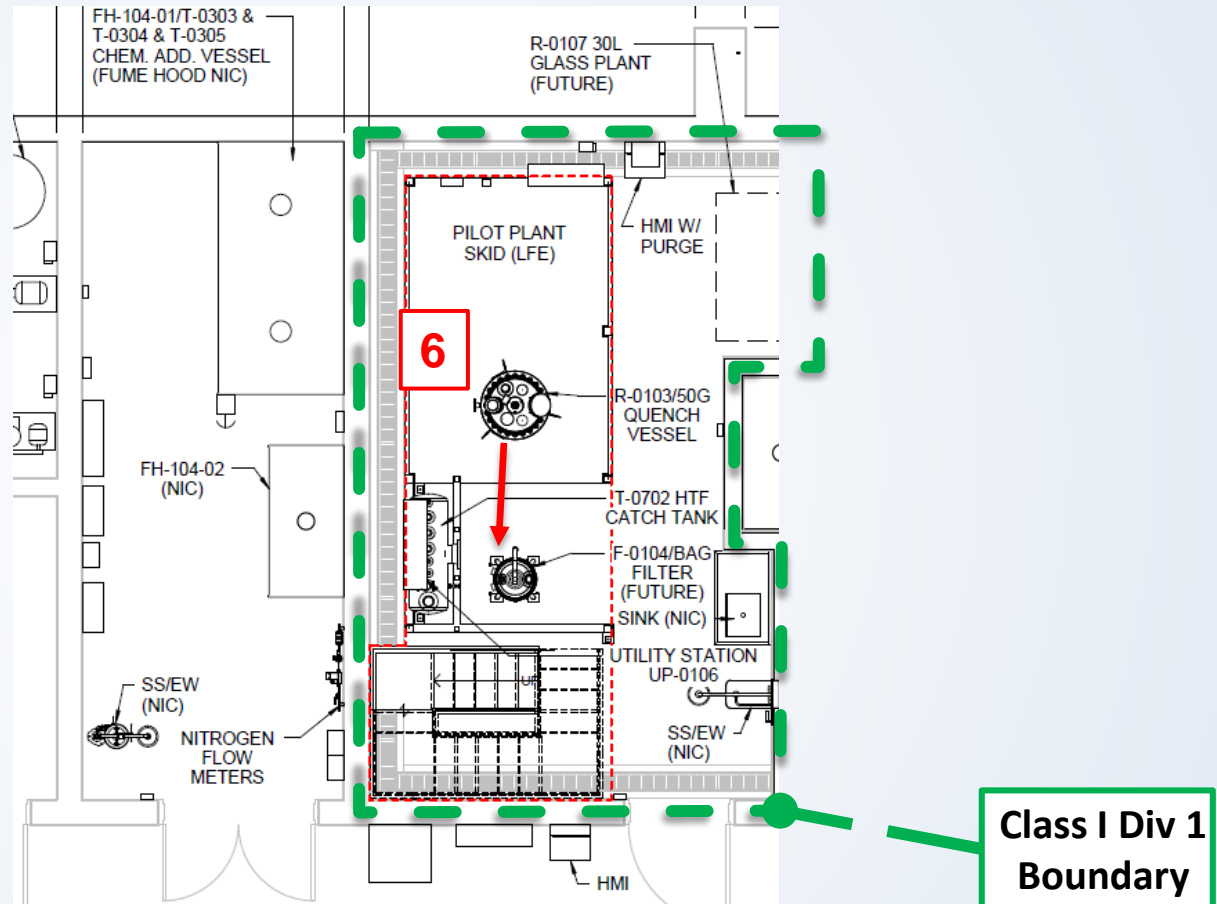


**Class I Div 1
Boundary**

Typical Synthetic Process in Pilot Skid: Nitration

1. Load liquid and solid reagents
2. Charge solvent (sulfuric acid)
3. Dose/dissolve starting material.
4. Dose nitric acid.
5. Quench Reaction
6. Filter Reaction

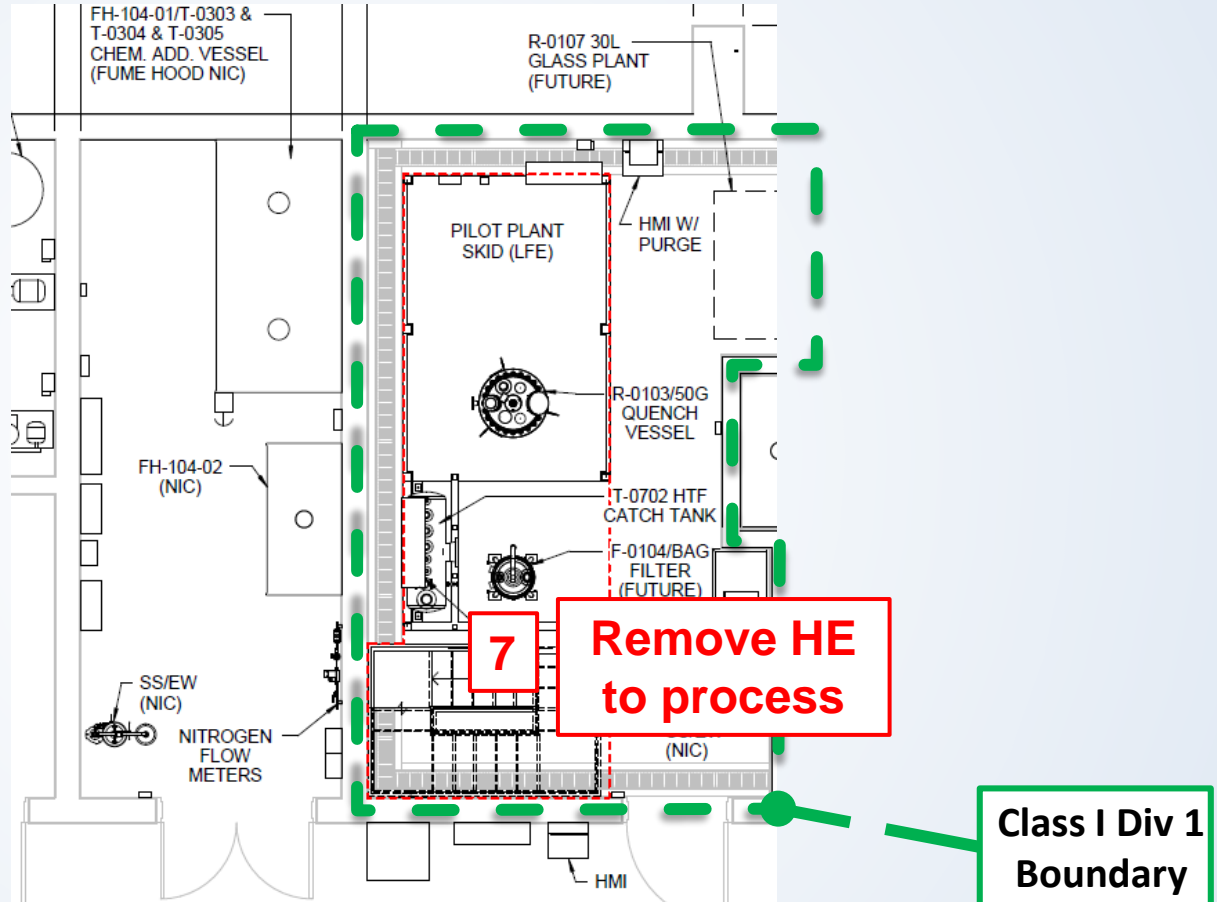
Remote and potentially contact from HMI.



Typical Synthetic Process in Pilot Skid: Nitration

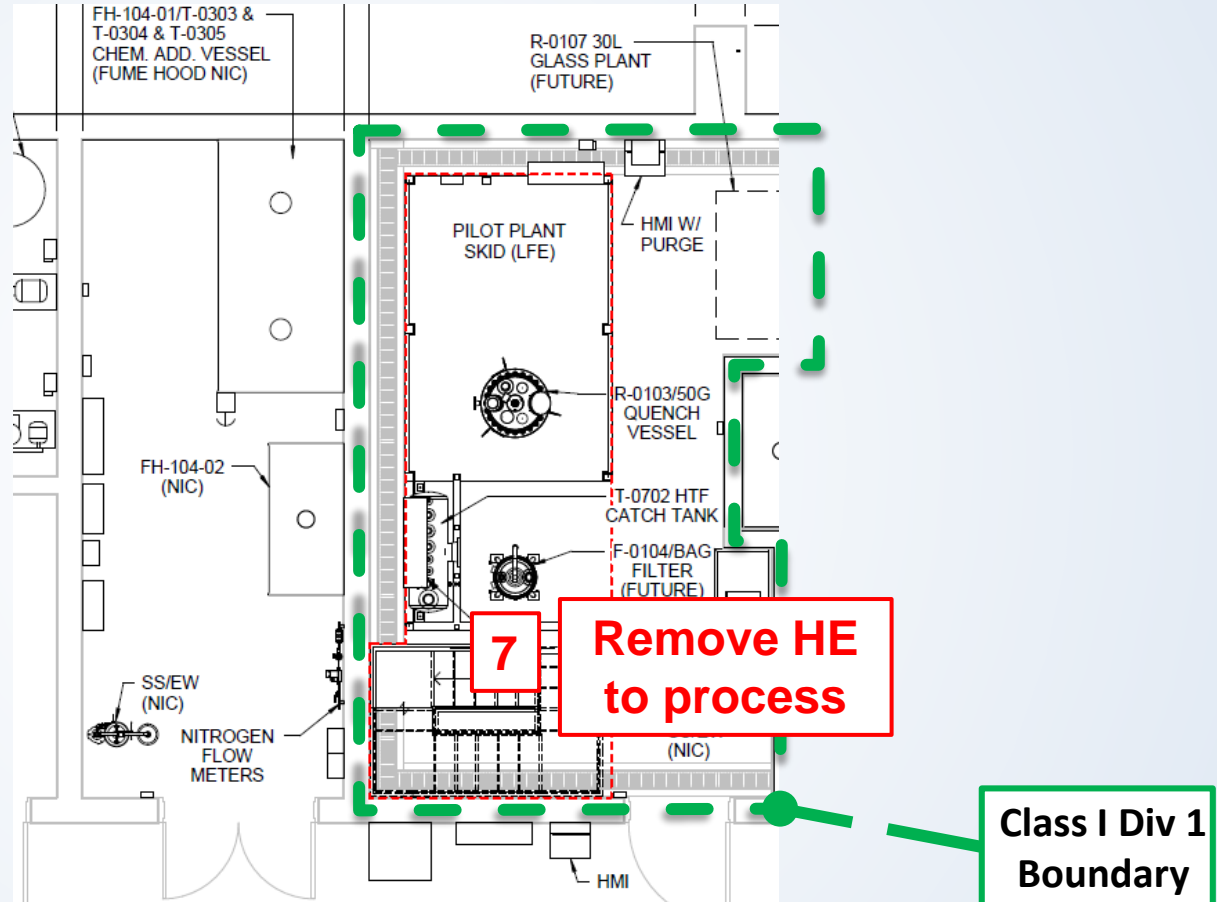
1. Load liquid and solid reagents
2. Charge solvent (sulfuric acid)
3. Dose/dissolve starting material.
4. Dose nitric acid.
5. Quench Reaction
6. Filter Reaction
7. Collect Product.

Contact operation



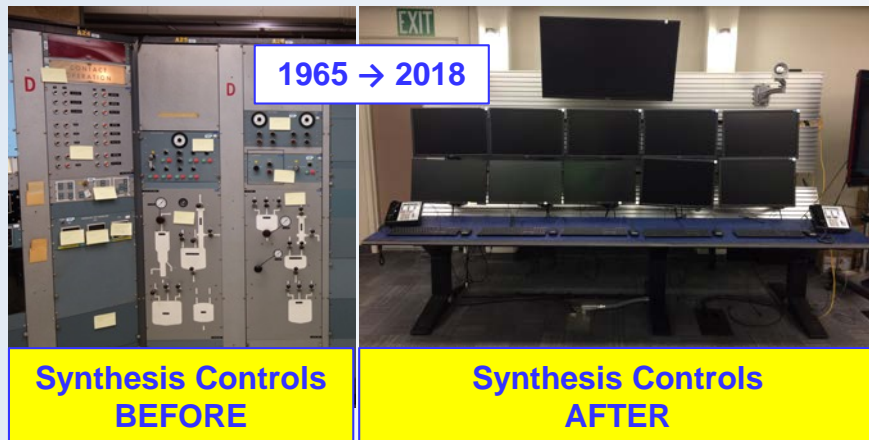
Typical Synthetic Process in Pilot Skid: Nitration

1. Load liquid and solid reagents
2. Charge solvent (sulfuric acid)
3. Dose/dissolve starting material.
4. Dose nitric acid.
5. Quench Reaction
6. Filter Reaction
7. Collect Product.

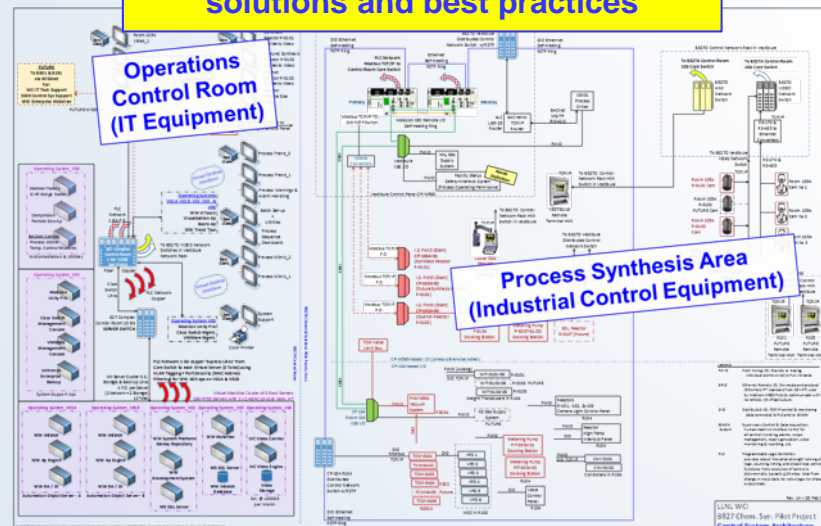


Timing of valve sequence actuation, alarm parameters, emergency stops, and PID control managed through integrated control system (ICS)

Industrial Control System (CS)



CS Architecture uses contemporary industrial process control systems solutions and best practices



- State of the art Modicon system for remote operation
 - CS infrastructure will be expandable to future projects.
- Controls System Integration (CSI) Subcontract (Avanceon, Exton, PA)
 - Offers engineering controls while delivering batch process flexibility and data collection capability using Schneider Electric's **Wonderware software platform**.
 - COTS hardware & software with industry standards-based configurable batch control software (**Wonderware InBatch**)

Modern, safe, capable, remotely operable controls

Control System Summary

- The CS has been developed by LLNL and Avanceon (Exton, PA)

1. 1180+ Alarms

4. 160 Phases

2. 800+ I/O Points

5. 111+ Interlocks

3. 100+ Control Valves

6. 415+ Page Functional Specification

- There are three operator interface terminals (OIT) for the pilot plant:

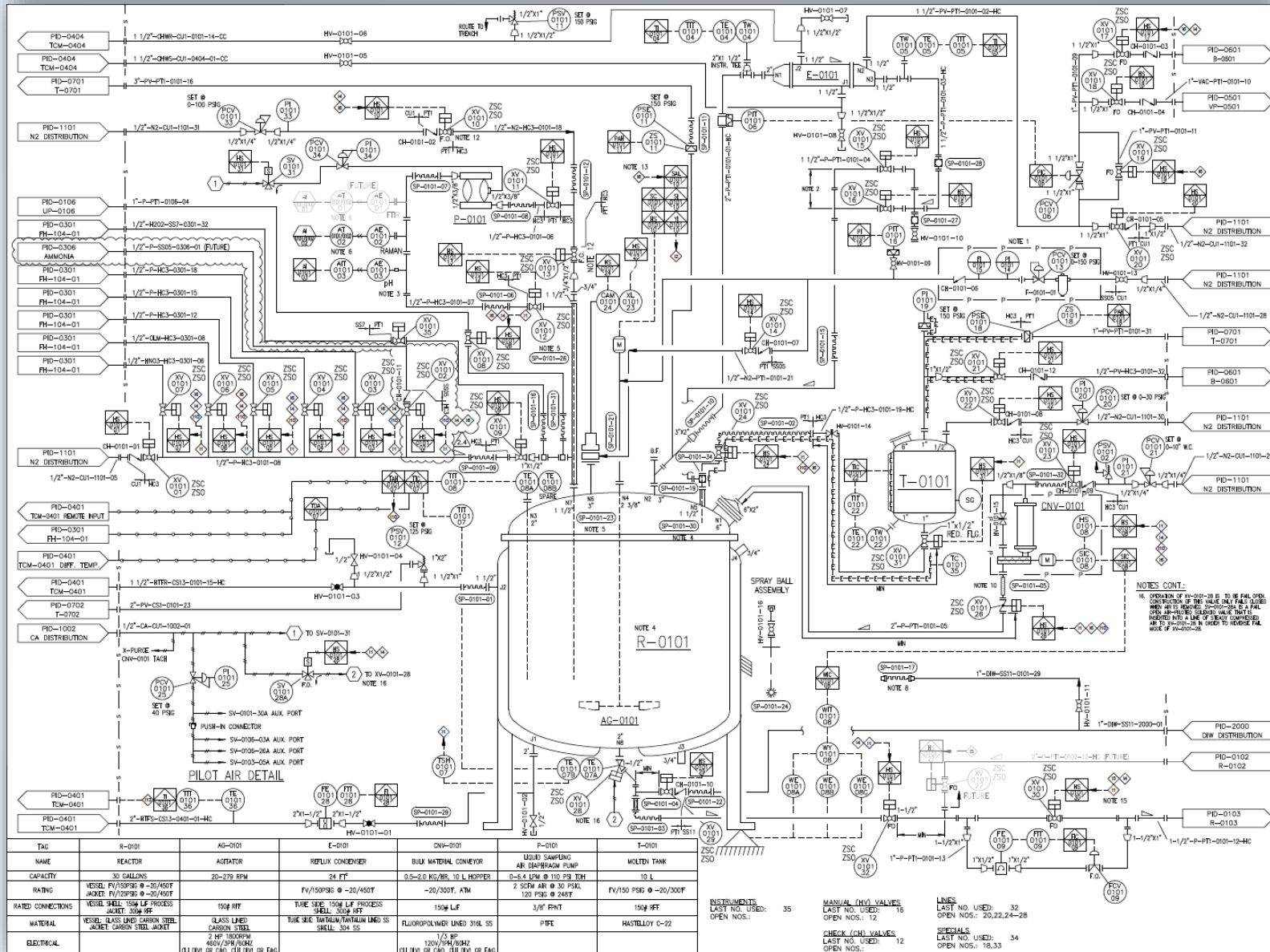
827A – Control Room, 827D Chemical Addition Room, and 827D Pilot Skid

Special system designed to prevent control room operation while operator is in the pilot facility.

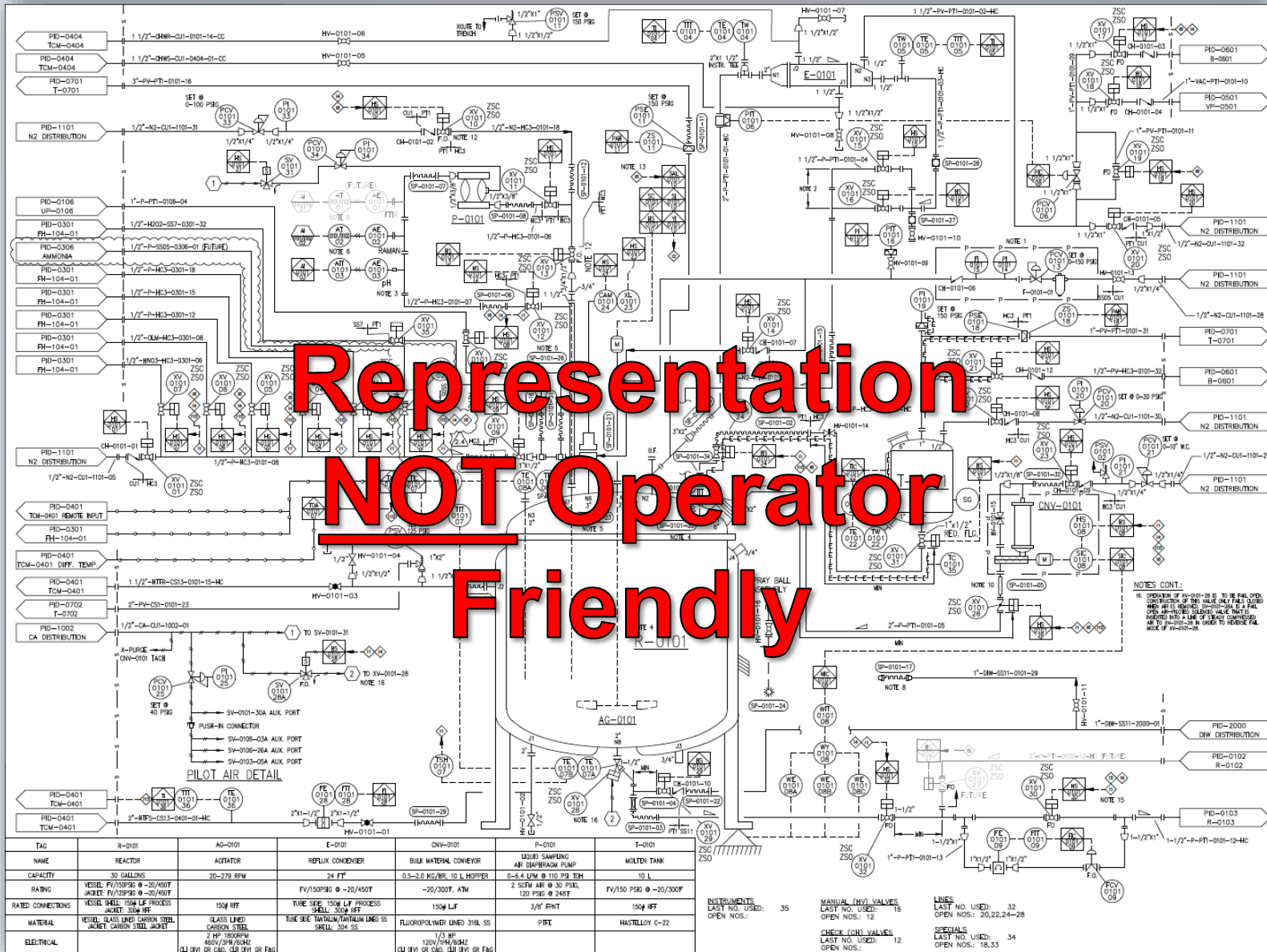
Capabilities of Integrated Control Software

- **Pre-coded operational functions built into custom Wonderware InBatch software (phases).**
 - *For example:* Purging the vessels with inert gas will not require the operator to manually open all valves in sequence. The system will open all appropriate valves on a command to “purge” a vessel.
 - InBatch provides a traceable, reliable, and structured “recipe” based process for running a synthetic process from start to finish. The capability to exit the recipe and proceed manually is still available.
- **In situ vessel cameras and Raman spectrometer allow for real time visualization of the physical and chemical reaction processes.**
 - Ability to tie a spectral result to a control system response is possible. For example, add more reagent until a spectral peak disappears.
- **Custom alarms set on instruments (pressure, temperature, etc.) that elicit varied levels of response.**
 - Exceed desired process temperature can stop a dose, or initiate maximum cooling of the TCM depending on a High or High-High alarm.

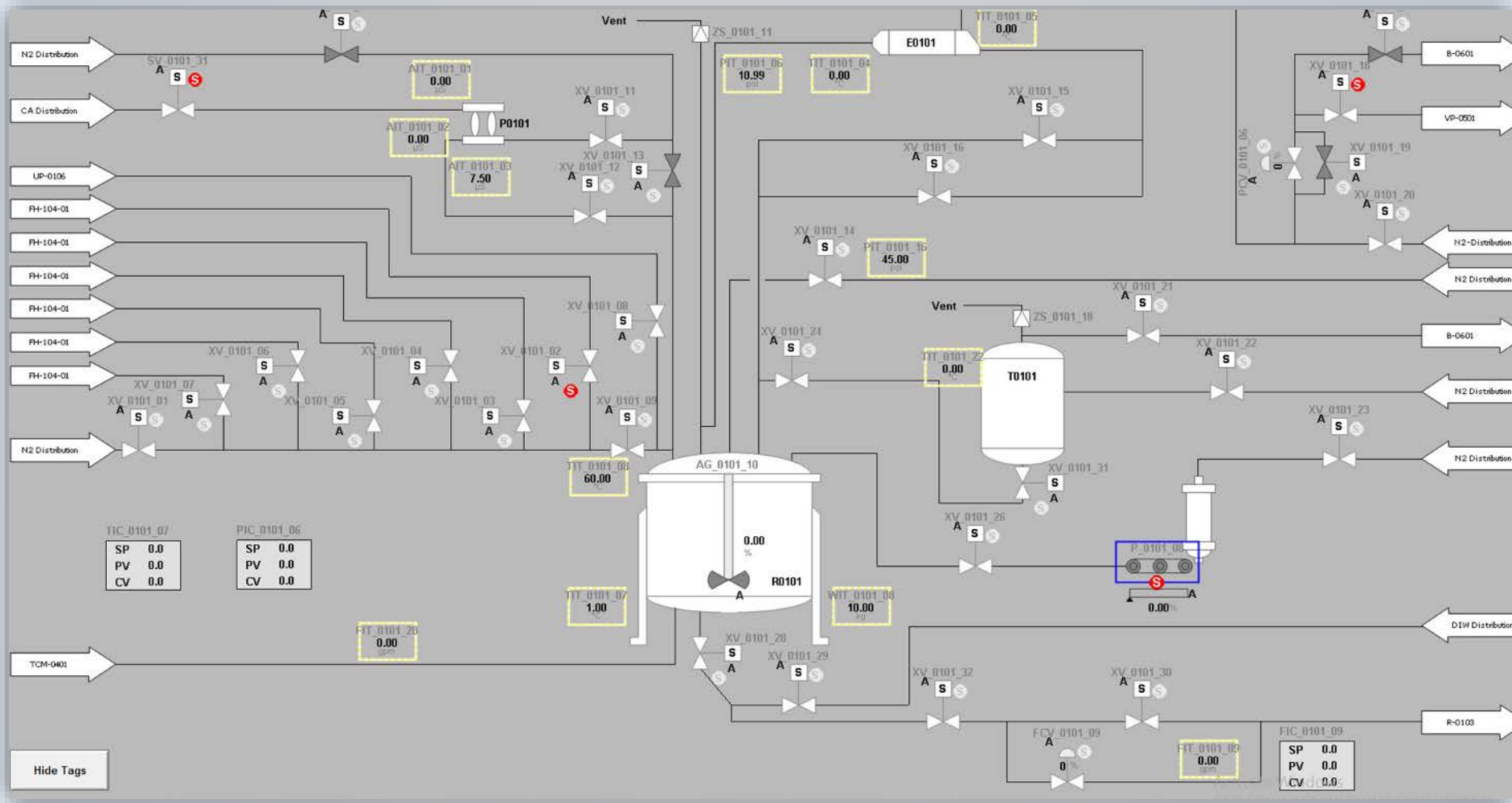
P&ID for 100 L Glass Lined Reactor



P&ID for 100 L Glass Lined Reactor



Control Screen for 100 L Glass Lined Reactor



Operator friendly and fully interactive screens developed by Avanceon.

Summary of Pilot Skid Capabilities

- **New facility provides a safe remotely controlled skid for a variety of synthetic processes:**
 - Rated for operating pressures of up to 135 psi.
 - MoC: glass-lined carbon steel vessels, hastelloy, tantalum, and PTFE for wetted materials.
 - Reaction temperatures of -10 to 150 °C.
 - Ammonia charging capability (vaporizer) for both 100L and 200L vessels.
 - Hydrogen peroxide dosing.
 - Metered solids addition via conveyor.
 - Remote reagent addition via metering pump, diaphragm pump, vacuum, or pressure.
 - Ability to phase separate, distill, and recirculate between vessels.
 - Sample loop on 100L vessel for three inputs: currently Raman and pH.
 - Ability to conduct CIP with InBatch automated recipe.
 - Nutsche and bag filtration.

Additional Pilot Facility Capabilities

- General purpose electrical area housing RC1e calorimeter.
- Space for future general purpose equipment: wish lists include continuous flow reactor, 5 gallon Parr reactor, and Buchi glass plants.
 - General purpose electrical room rating allows for HE synthesis and processing in fume hoods utilizing non-rated commercial equipment.
- Identically sized room on opposite side of building from pilot skid houses fume hood for powder handling and drying oven.

Acknowledgements

- Funding sources: DOE and NNSA Headquarters
- LLNL Project Managers: Bill Collins (retired), Brock Parsons, Mark Coons, Jeff Packard, Steve Chan, Fred Wade (control system integration), Kenn Knittel, Veronica Harwood, Lou Bertolini, Lou Ferranti
- Subcontractors: Hart Design Group and Hart Construction (facility design and fabrication), RORE Inc. (construction installation), TFS (construction installation), Wilhite (electrical), Avanceon (control software), Nalas Engineering (process hazard analysis)
- Scientists: Phil Pagoria, Alan DeHope, Mao Xi Zhang, Edwin Virgin, III, Spencer Vartanian, Levi Merrell, Yong Han, Lara Leininger, Jon Maienschein, Sabrina DePiero
- Reviewers, Work Control, and Support: Mark Zagar, Kevin Vandersall, Kevin Merrell, Barbara Jesus, Hiroshi Saito, Dawn Kramer, Shari Brigdon, Alex Gash, George Overturf, Ken Newman, Wes Davis, Dave Hill, John Scott, Deanna Kahmke, Kim Elam, Donovan Day, Annette Warner, Cameron Cornell, Trini Gonzalez

