

Thank You



Resilient Equipment



Enabled Operators

Indomitable Teams

“The Operator is Our Platform”

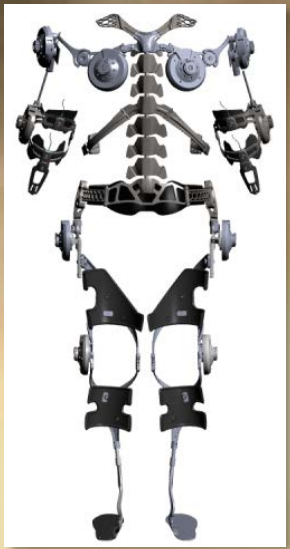
GEN Thomas, Commander, USSOCOM

Increase
Survivability

Increase
**Surgical
Lethality**

Increase
**Situational
Awareness**

Increase
**Partnered
Interoperability**



See Yourself See the Environment See the Threat



What we need from **You**

Hyper-Enabled Operator

Tactically relevant, decision
quality information at the Edge:

Communication

Computing

Sensing

Cognitive Interface

Advanced Autonomous Aids

Assured Communications

Low Probability
of Detection
Low Probability
of Intercept
Multi-channel
High bandwidth
Performs in
Enclosed Spaces



Assured Maneuver

Forward force maneuver
Mobility in all environments
Fire Support in all environments
Relevance in highly contested
Environments



Precision Navigation and Timing

**GPS-independent:
Navigation
Precision Munitions
Communications**

Precision Munitions

Low Circular Error Probable

No collateral damage

Ability to loiter

Ability to divert off target

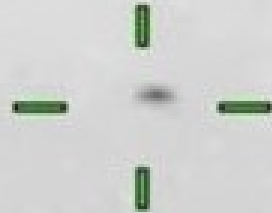
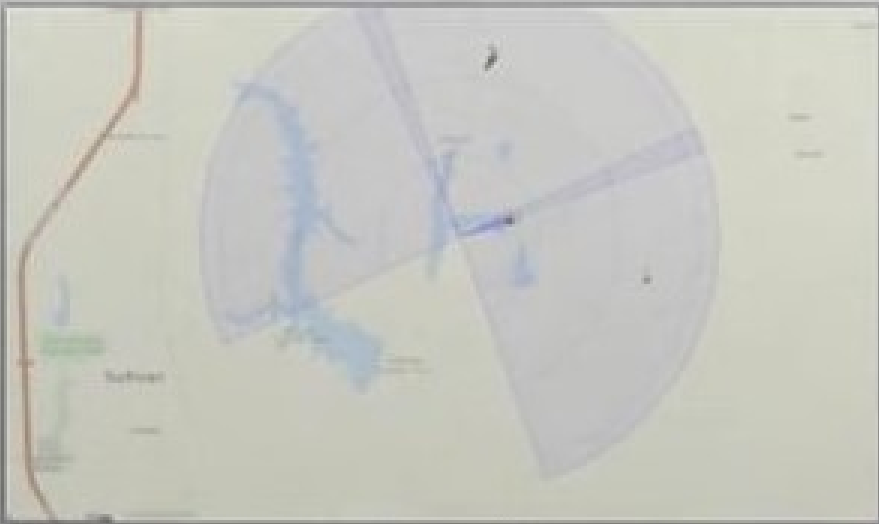
Multi-launch platform

(Air, Land, Maritime)

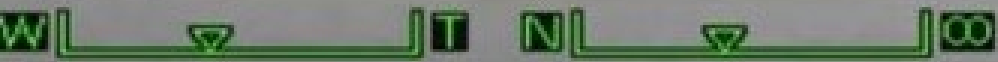


Counter IED/UAS

Control the RF environment
Detect, Defeat, Exploit, Intercept
Man-portable
Highly mobile



Dist: 0.641 km
Alt: 1269 ft
Speed: 29.85 m/s
FOV: 12.3°



Next Generation ISR

Find, Fix, Finish, Exploit and Analyze...
...without Owning the Air Domain
...in the Space Domain or...
...in the Cyber Domain...
...enabled by Advanced Automation

Expeditionary ISR

Line-of-Sight and Beyond Line-of-Sight Data Link
Accurately locate targets
Runway-independent launch and recovery
Two-sensor capable
(HD FMV EO/IR,
EW, SIGINT)

Family of Group 1-2 UAS's
Modular payloads
Open architecture
Small footprint/min logistics

Managed Signature

Avoid physical detection:

Thermal

Radar

Visual and Near IR

Audible

Manage digital presence:

Social media

Resistant to biometric tracking

Next Gen Military Information Support Operations

Operations at the edge

Limited/denied connectivity environments

Drone supported broadcasts

Linguist expertise and regional dialects

Demographic and culturally adaptive

Multiple Spectrums—Microwave, IR, etc.

Real-time feedback

Biometrics and Patterns of Life

Data analysis

BioMedical

Stabilize for extended duration

Austere trauma treatment

Vital sign awareness

Tele-medicine

Improve sleep quality

Cognitive performance

Reduce injury

Faster return to duty



Expeditionary Logistics

Resilient and agile
On time
**Access to remote
and austere**
Right-sized

Interoperable with Partners

Affordable
Sustainable
Proliferable
Interoperable

What you can Expect from **Us**

Competitive & Collaborative

194 TILO submissions
and 36 TILO briefings
15 Capability
Collaboration Events
2 Industry Days
3,256 Vulcan entries

Competed 70.3 ¢ of every \$
Awarded 31% to Small Business
Awarded 8.6% to Small
Disadvantaged
Awarded 5.4% to Women-owned
Awarded 13% to Service Disabled
Awarded 2% to HUBZone Firms

Time Sensitive



Tailored Acquisition Strategies
Flexible contracting mechanisms
Err on the side of over-communicating

Partnered/International



Synergizing future capabilities
Leveraging foreign knowledge
Exploiting mature solutions
Equipping partnered operations

SOFWERX

A partnered network and platform to help solve SOCOM challenges
96 agreements supporting SOF innovation
25 current projects with more on the way

FOUNDRY

RECEIVING DEPT.

SOFWERX

“Continuously Delivering Performance with Affordability and Speed...” 2018 NDS

**Ballroom D to align your interests with PEO Focus Areas
CRADA’s & IRaD
Submit existing tech or ideas for review**

Thank You

