



SPECIAL OPERATIONS FORCES INDUSTRY CONFERENCE

Win • Transform • People

Colonel Jack Dills *Program Executive Officer*
Special Operations Forces Support Activity (PEO SOFSA)

TRUSTED EXPERTS FOR SOF LOGISTICS



Agenda

- Mission
- Organization
- Is SOFSA Right For You?
- Programs
- Core Competencies
- PEO SOFSA Metrics
- Enterprise
- Mobile Technology and Repair Complex
- Points of Contact
- Customer Handbook



SOF AT&L



MISSION

Provide rapid and focused acquisition, technology, and logistics to Special Operations Forces.



VISION

Trusted Experts



PRINCIPLES

Deliver capability to user expeditiously; exploit proven techniques and methods; keep Warfighters involved throughout process; take risk and manage it!

PEO SOFSA



MISSION

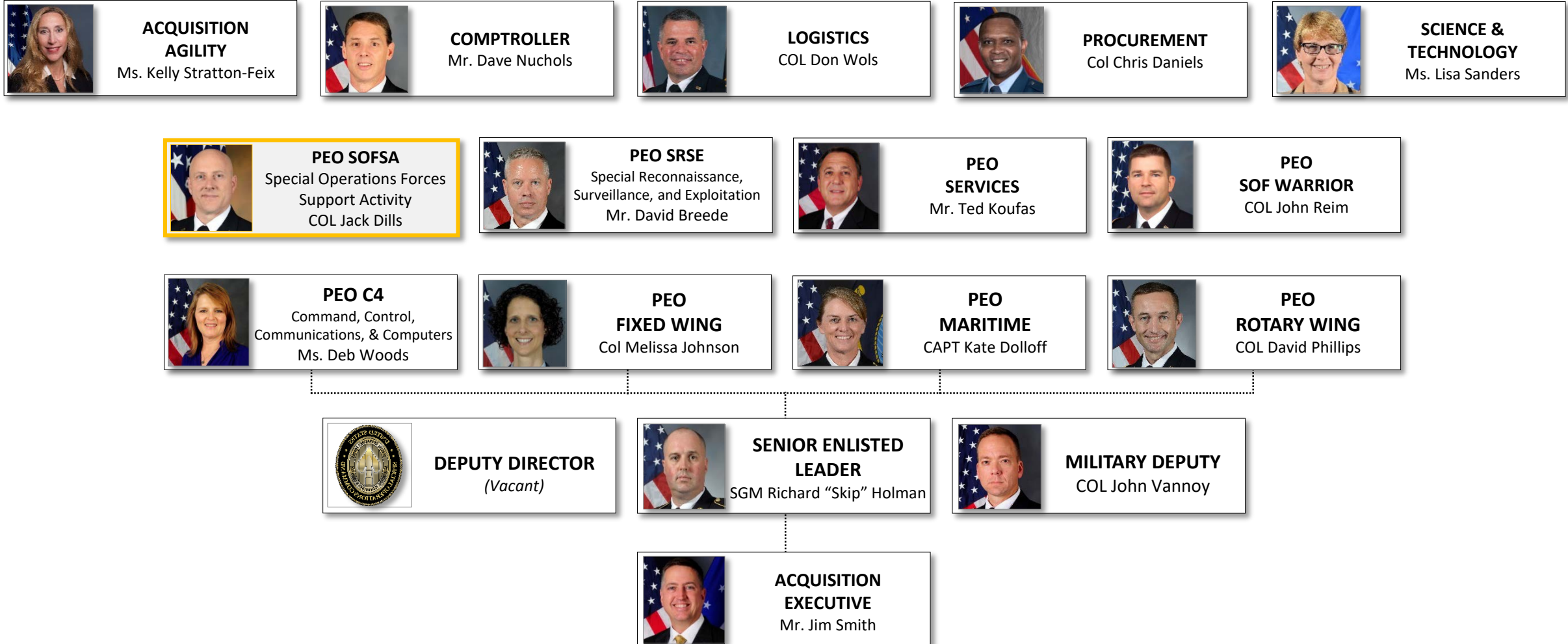
Enable Global SOF Operations Through
Dedicated Lifecycle Sustainment



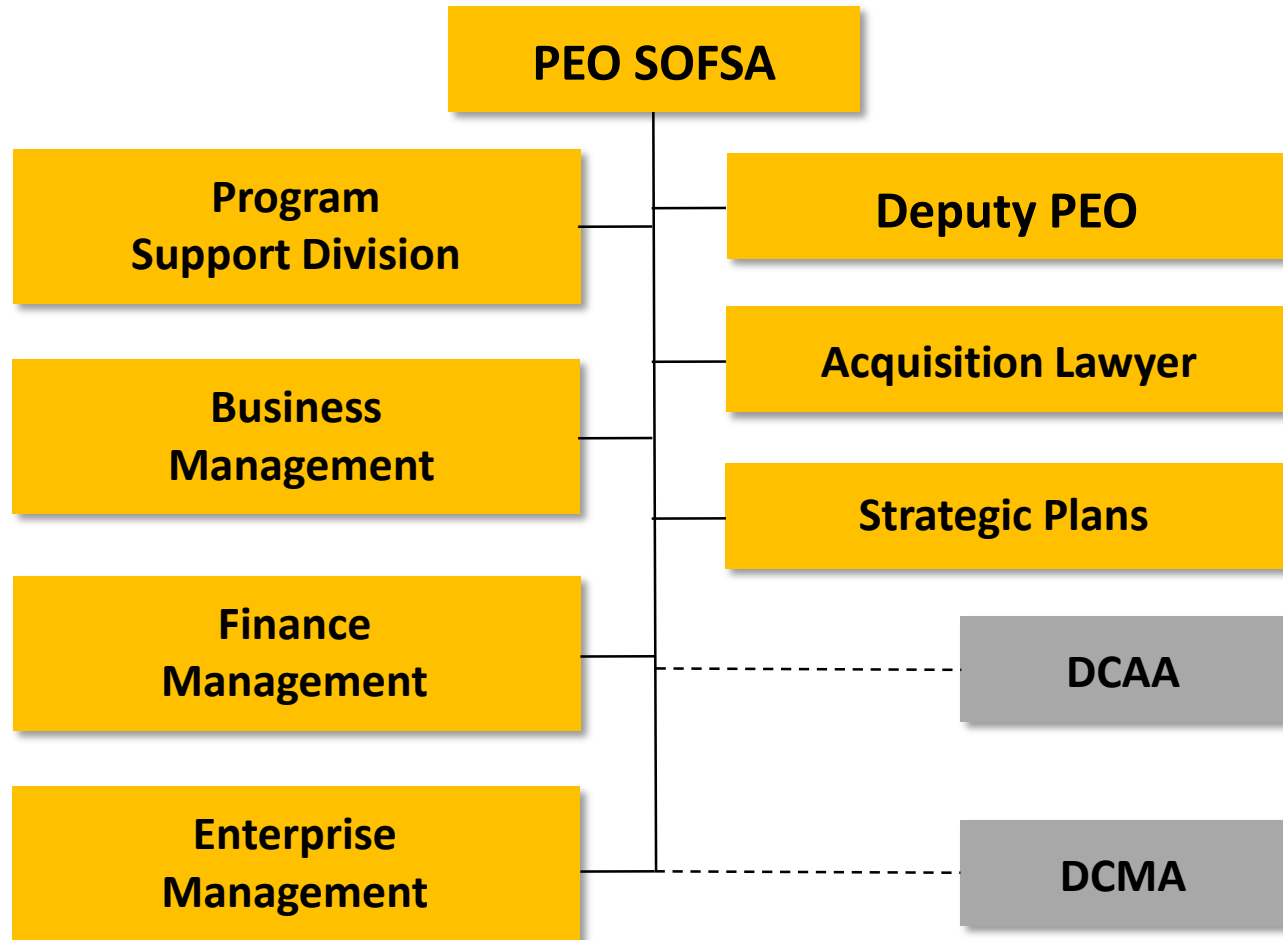
VISION

Trusted Experts for SOF Logistics
& SOF Peculiar Modifications

Special Operations Forces Acquisition, Technology, & Logistics Organization



PEO SOFSA



PEO	Auth	O/H
MIL	1	1
CIV	46	43
CTR	10	10
Total	57	54

Full Spectrum Logistics



Distribution

Bare Basing



Warehousing

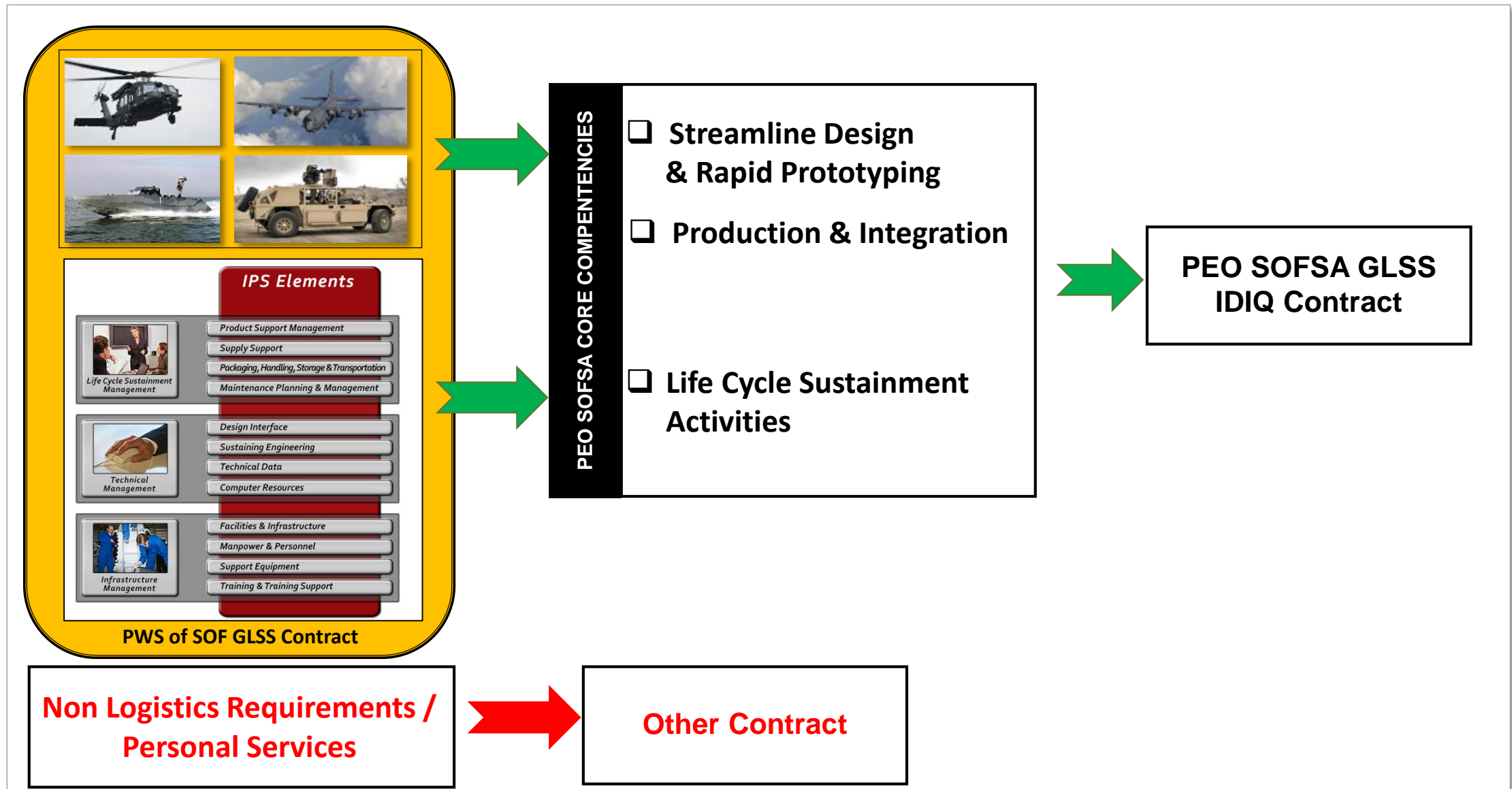
Maintenance

SOF Logistics Operational Environment



Providing Logistics Support to Low Density SOF in Emerging or Enduring Presence Operations in Remote, Austere Locations for Joint Distributed Operations

Is PEO SOFSA Right for my Logistics Work?

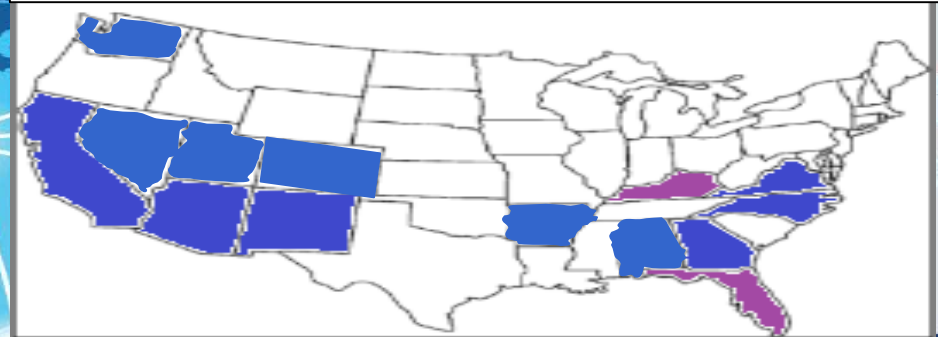


USSOCOM's Dedicated Support for SOF Logistics



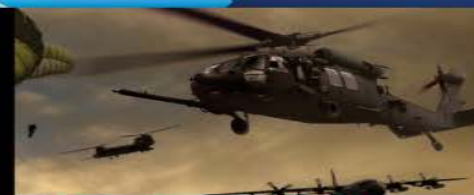
Streamline Design & Rapid Prototyping

■ Customer Sites
■ PEO SOFSA Leased/Enterprise



PEO SOFSA

PROGRAM EXECUTIVE OFFICE FOR SPECIAL OPERATIONS FORCES SUPPORT ACTIVITY



Life Cycle Sustainment Activities



Supporting ALL of USSOCOM



Production & Integration

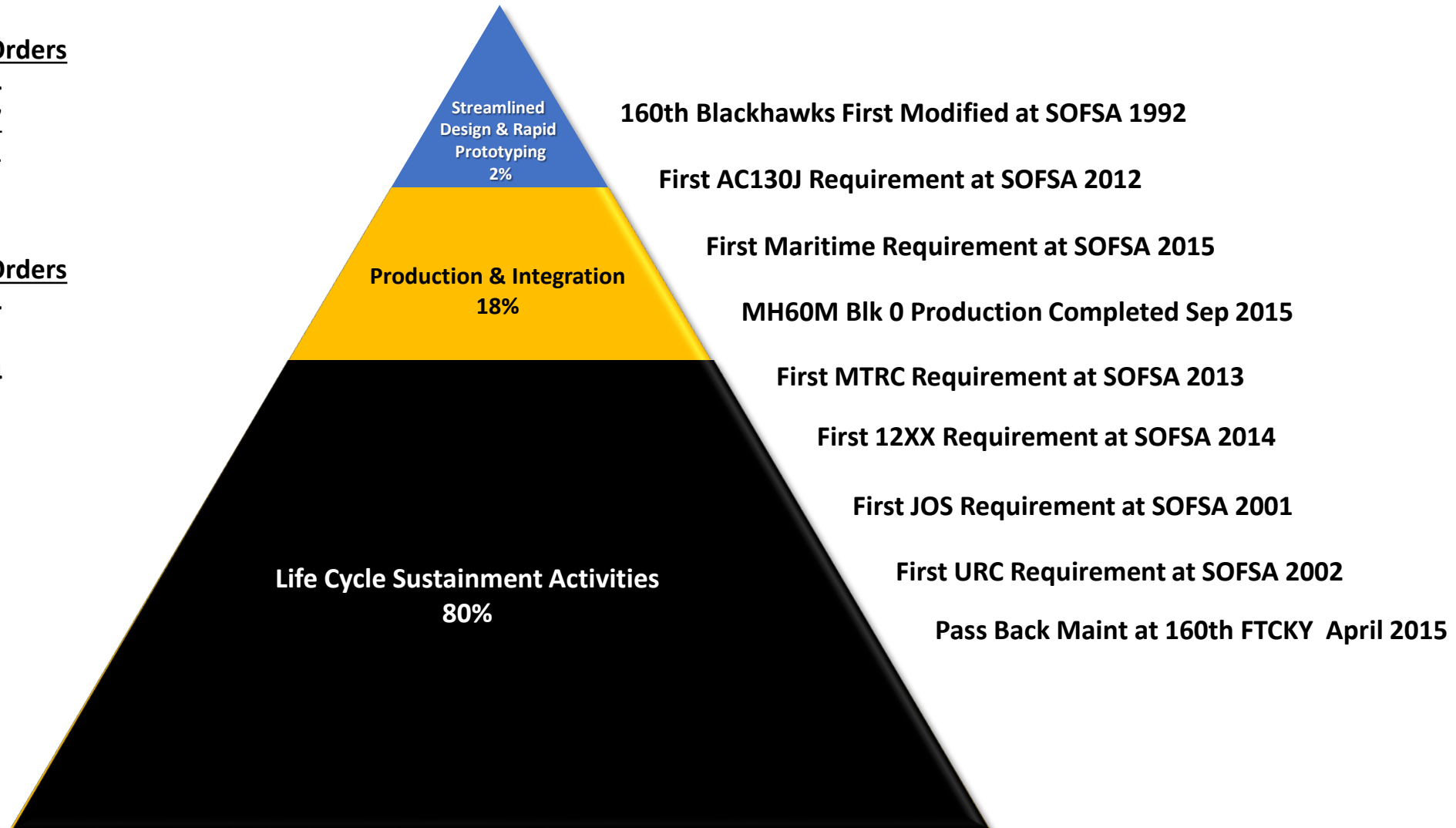
Capability / Work Load / History

Aviation Programs

Type Work	Contract Value	# Task Orders
Rotary Wing	\$305M	34
Fixed Wing	\$415M	27
Total	\$710M	61

Ground & Maritime Programs

Type Work	Contract Value	# Task Orders
Supported	\$147M	64
PEO SW	\$61M	9
USASOC	\$43M	14
J4	\$35M	7
PEO Maritime	\$32M	6
PEO SRSE	\$28M	4
TSOCs	\$19M	9
12XX	\$18M	4
NSWC	\$17M	5
PEO SOFSA	\$13M	1
US Army	\$10M	5
PEO C4	\$8M	4
MARSOC	\$.4M	4
Total	\$432M	136



Program Executive Office Special Operations Forces Support Activity (SOFSFA)

SOF AT&L GROUND & MARITIME PROGRAMS



FOSOV Ground Platforms



Maritime Platforms



C4I / SRSE / ECM Systems



SPEAR / TCCC Weapon Systems

COMPONENTS & TSOCS



Expeditionary Stock Storage



Joint Operational Stock



CONUS / OCONUS Logistics
Support Maintenance / Riggers PBO /
Supply Support



SOFSFA FWD /
Mobile Technology & Repair Complex

AVIATION ROTARY WING



MH-60M
Medium Assault
Modifications

MH-47G
Heavy Assault
Modifications



AH/MH-6M
Light Assault
Production / Mods



SOF Non
Standard / FID



Depot Level
Flight line & Pass-Back Maintenance

AVIATION FIXED WING



AC / MC-130J Production / Mods
& Maintenance



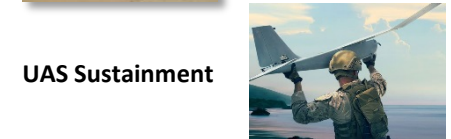
CV-22 Osprey
Integration &
Maintenance



MQ-1/MQ-9
Maintenance

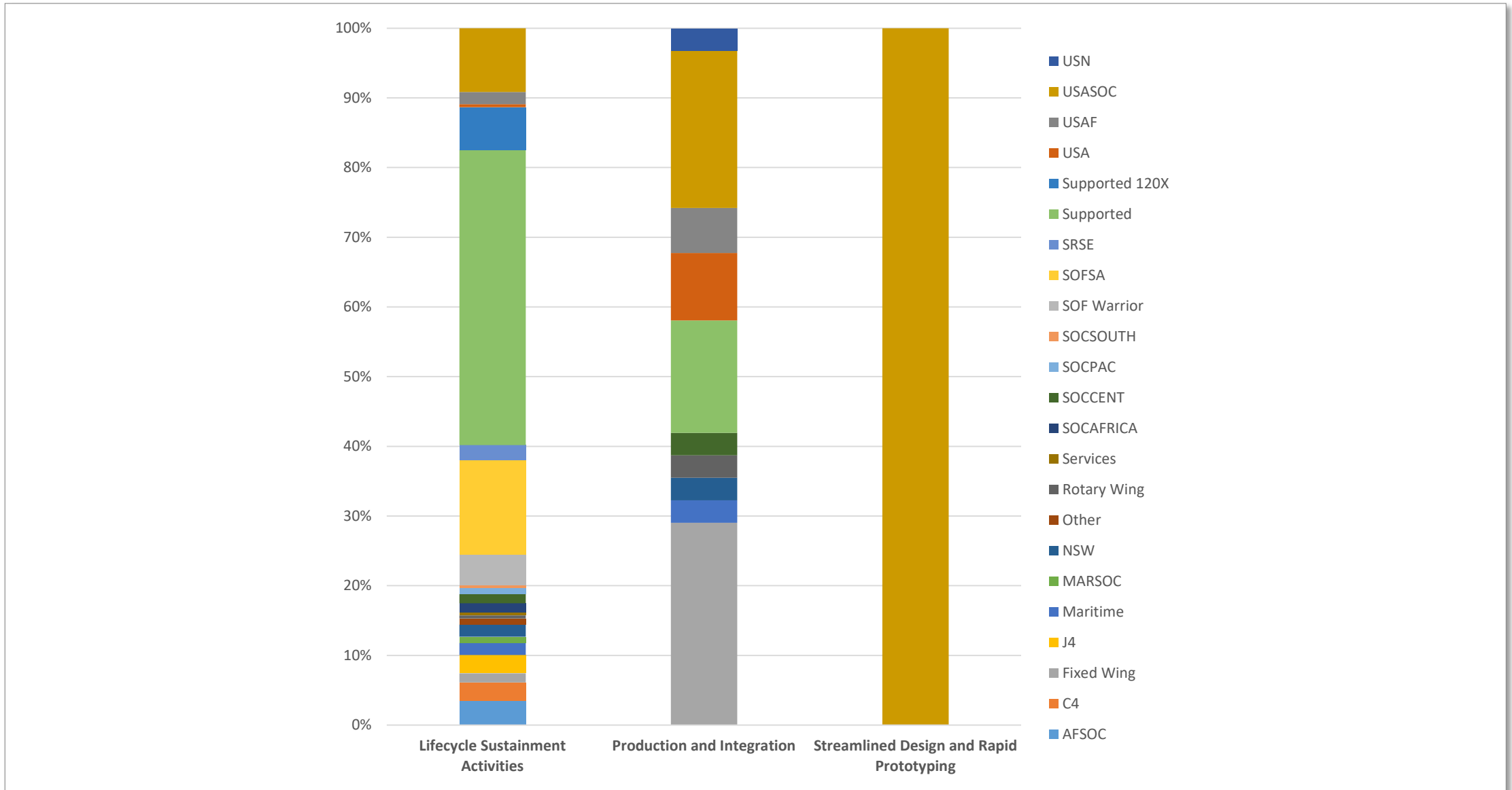


C27J Sustainment

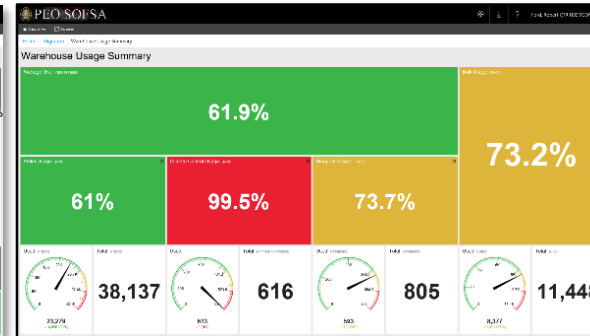
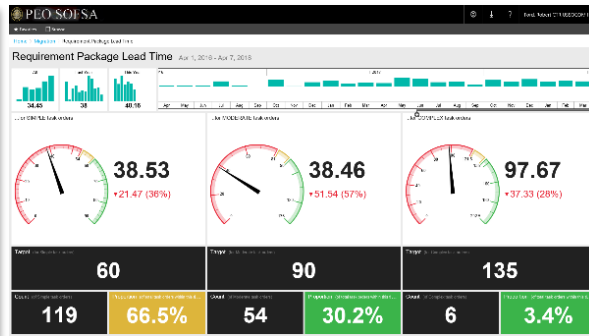
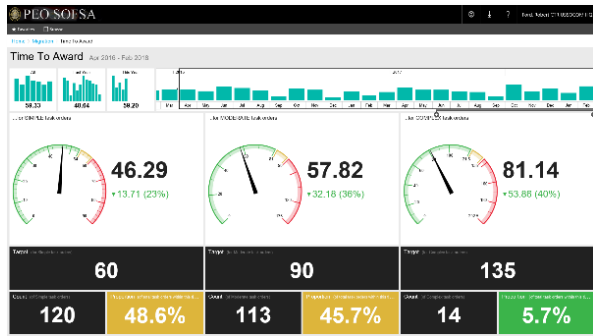


UAS Sustainment

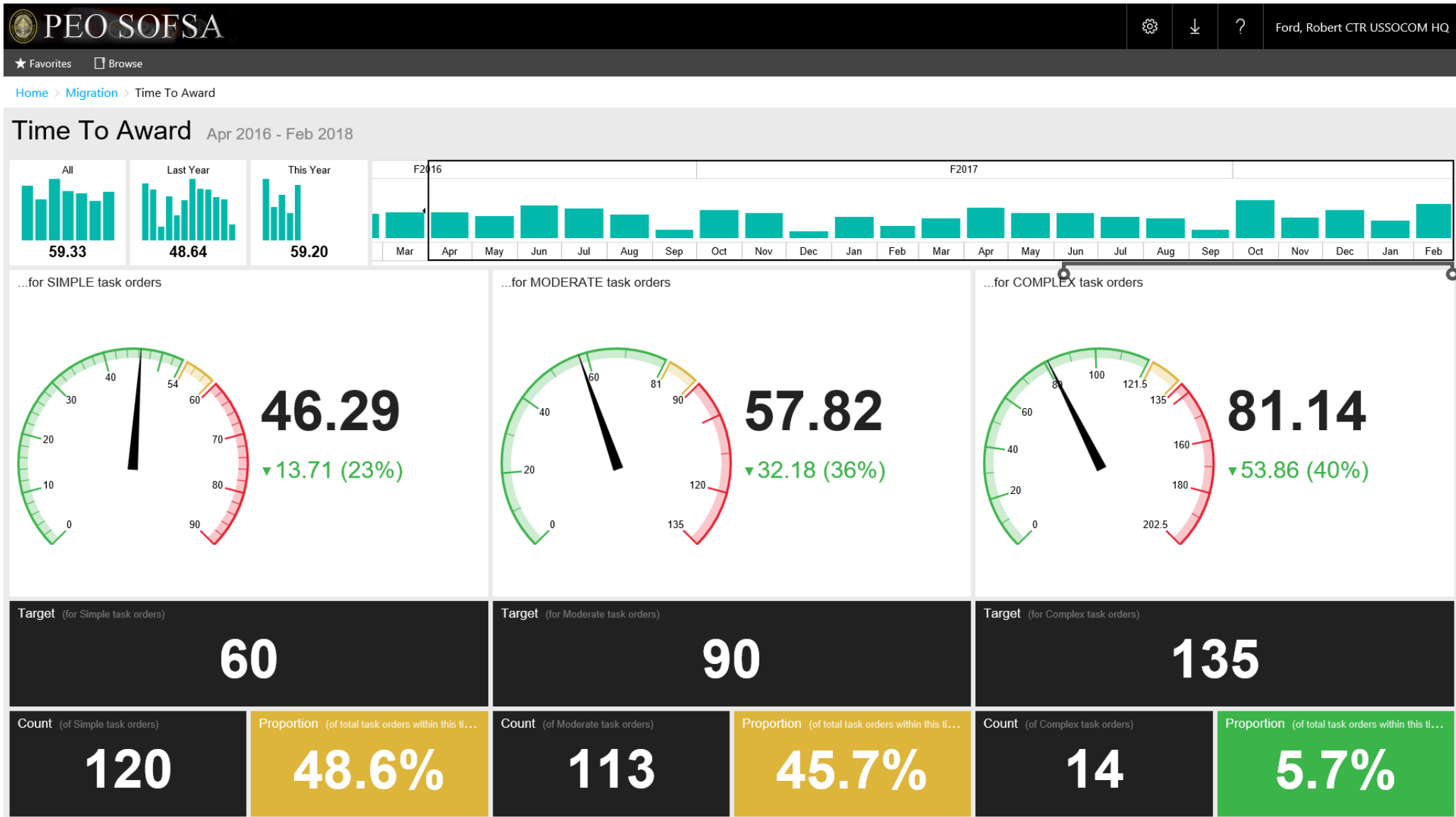
Customers by Core Capability



PEO SOFSA Metrics

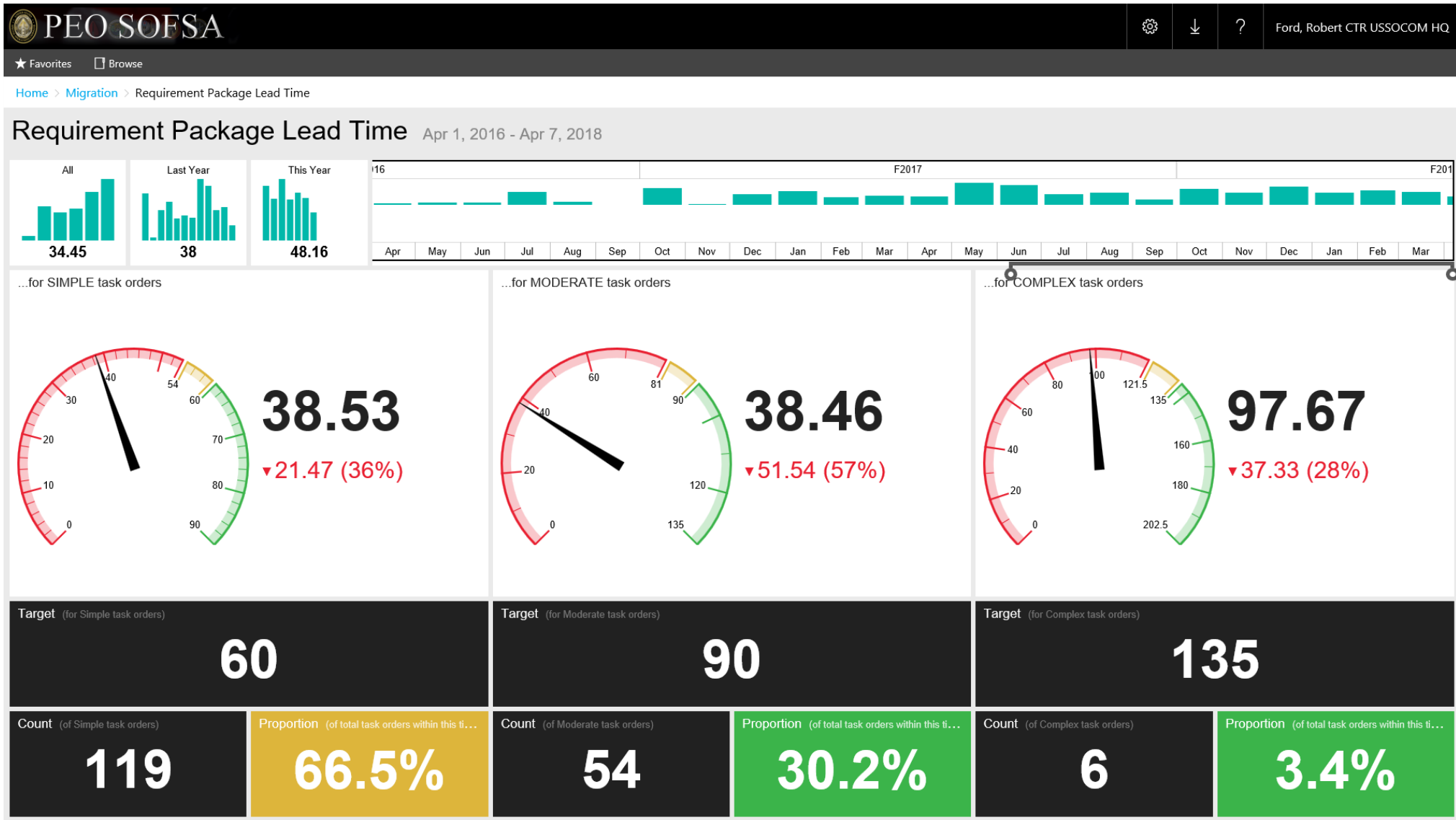


Time to Award (Lower is Better)

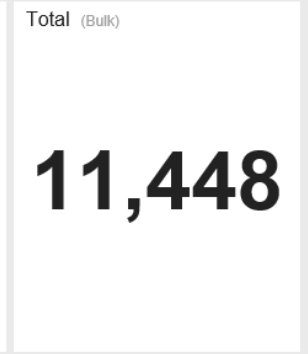
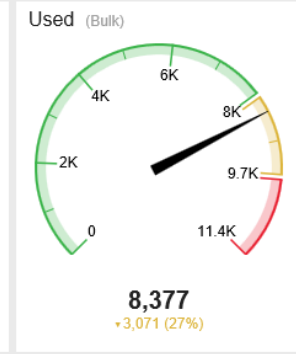
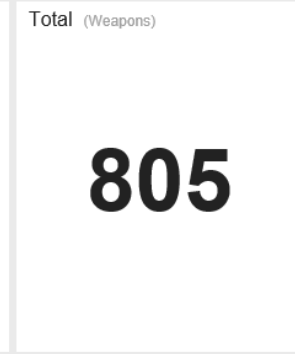
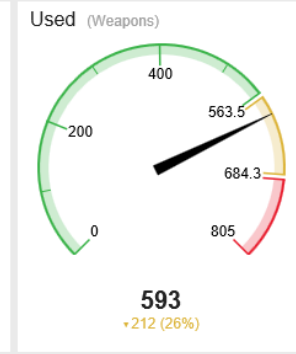
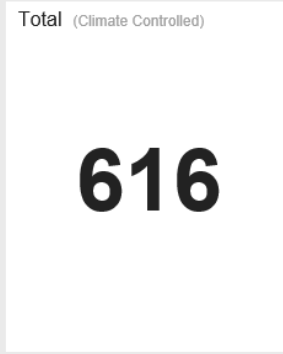
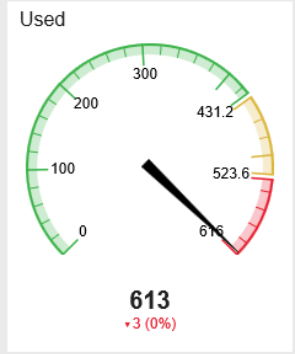
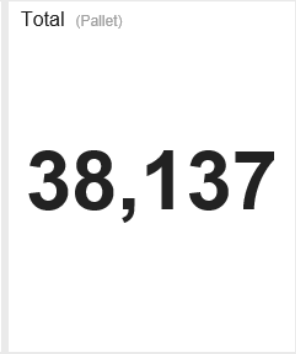
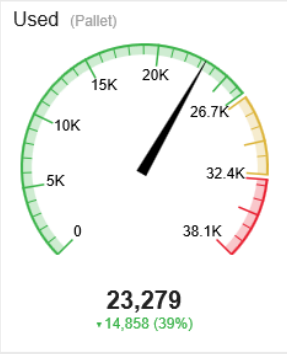
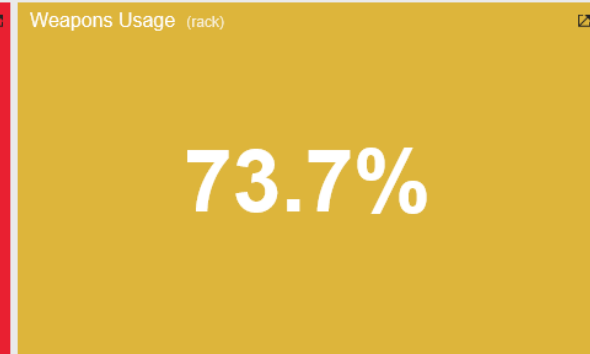
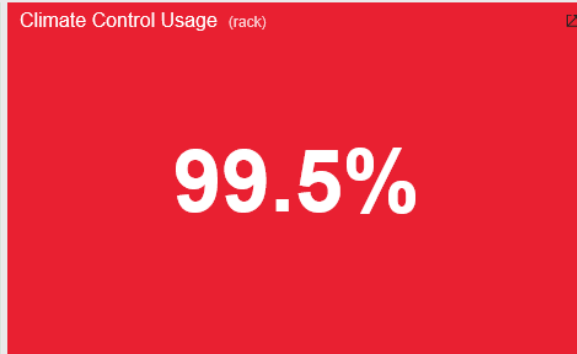
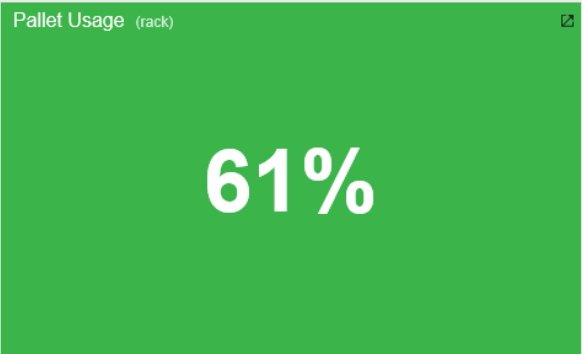
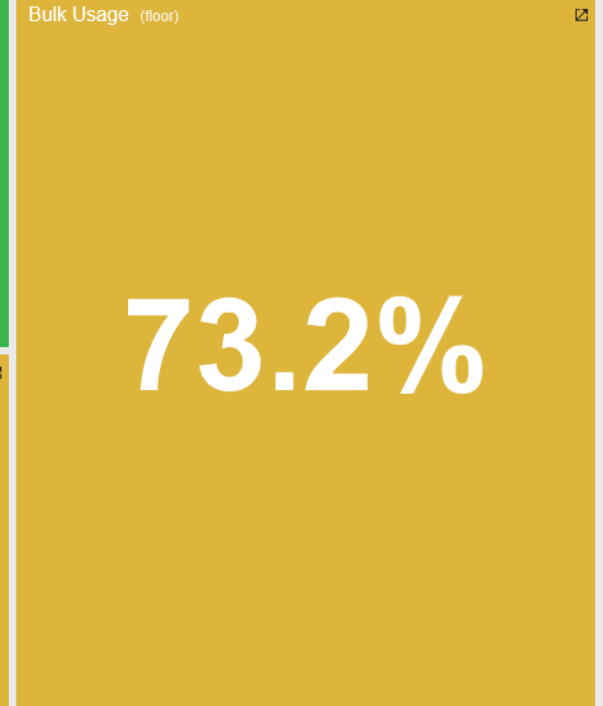


Requirement Package Lead Time

(Actual Date Received vs PEO SOFSA Target)



Warehouse Usage Summary



Warehouse Usage Details

Used %

61%

Used

23,279

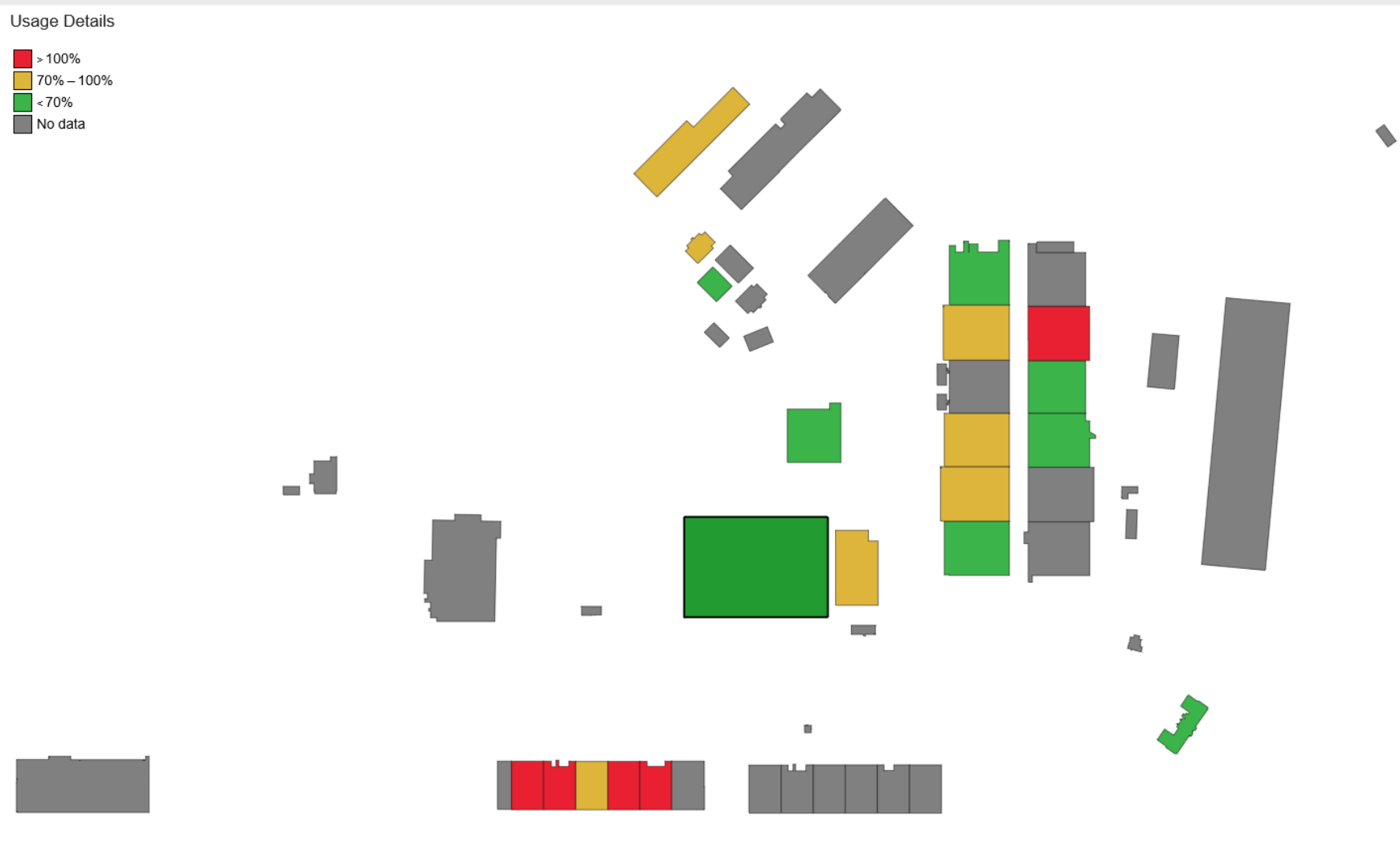
▼ 14,858 (39%)

Usage Breakdown

Building	Bay	Used	Total	Used (%)
190		0	48	0.00%
220	F	0	899	0.00%
221	C	0	1,037	0.00%
5	B	172	172	100.00%
5	C	216	216	100.00%
5	D	269	288	93.40%
5	E	140	140	100.00%
5	F	236	236	100.00%
101		1,929	2,740	70.40%
102		7,711	16,708	46.15%
140		211	224	94.20%
195		413	2,266	18.23%
197		2,709	2,980	90.91%
220	A	741	1,190	62.27%
220	B	3,149	3,170	99.34%
220	C	3,966	3,983	99.57%
220	F	1,200	1,400	85.71%

Usage Details

- > 100%
- 70% – 100%
- < 70%
- No data



PEO SOFSA Enterprise

- **Logistics Operations** – Provide supply and transportation services to the SOF community while accounting for a **\$3B** inventory (55K lines of equipment and 4.5M units of equipment) and processing **42K** receipts and **68K** issues annually.
- **Facility Management** – Manage and maintain over **2.5M** square feet of PEO SOFSA leased facilities. Purpose of the facilities include storage, administrative, and industrial space; these facilities are located in two states.
- **Environmental, Safety, and Health** – Operate ground and aviation safety programs that comply with all applicable Federal, state, and local environmental, safety, and health laws, regulations, policies, and procedures.
- **Security Management** – Ensure a comprehensive security program is maintained that includes information, personnel, and physical security, OPSEC, COMSEC, and Force Protection IAW DoD standards and guidance.
- **Information Technology Management** – Maintain and support all NIPRnet operations to execute the PEO SOFSA mission via the SOFSANet. This includes the management of all hardware and software related IT assets.



Bluegrass Station



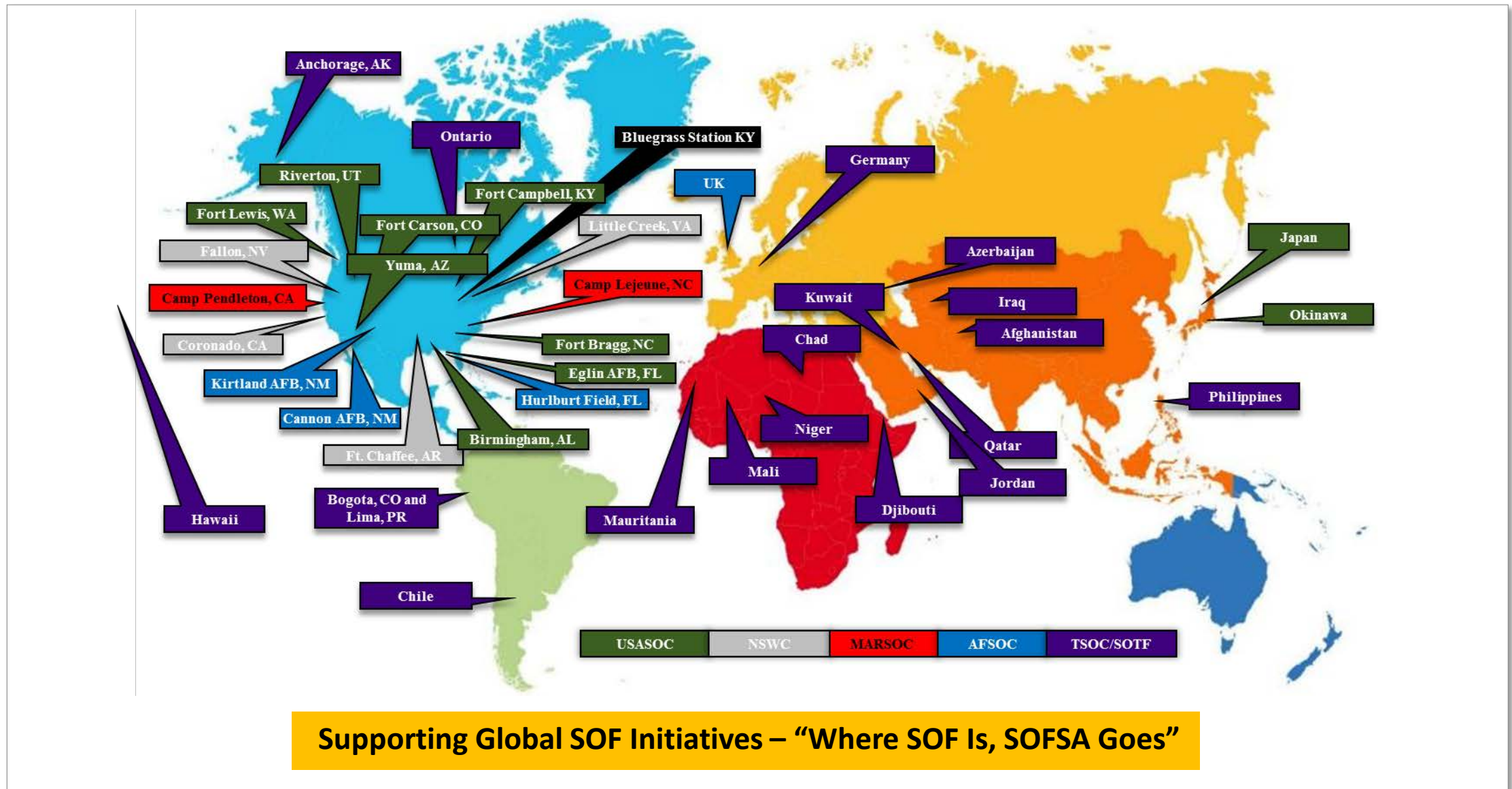
Mobile Technology Repair Complex

- Capability. MTRC currently provides the capabilities and processes to rapidly modify, repair, and fabricate SOF equipment and facilities, at the point of need, in order to bridge operational gaps and adapt to opposition or environment change.
- Composition. A typical MTRC Team is comprised of a two man team consisting of an USG civilian engineer and a contract technician that provide onsite engineering, innovation, and technical support. The MTRC team deploys with modular, scalable equipment sets that can meet a variety of expeditionary requirements and tasks.
- Specialized Skills.
 - Engineering (CAD, 3D printing, documentation, risk management)
 - Welding
 - Machining
 - Advanced Manufacturing
 - Carpentry
 - Electrical
 - Kydex & Sewing
 - Platform / Weapons / C4



Global Logistics Reach

Deployed Field Reps: ~400 Average

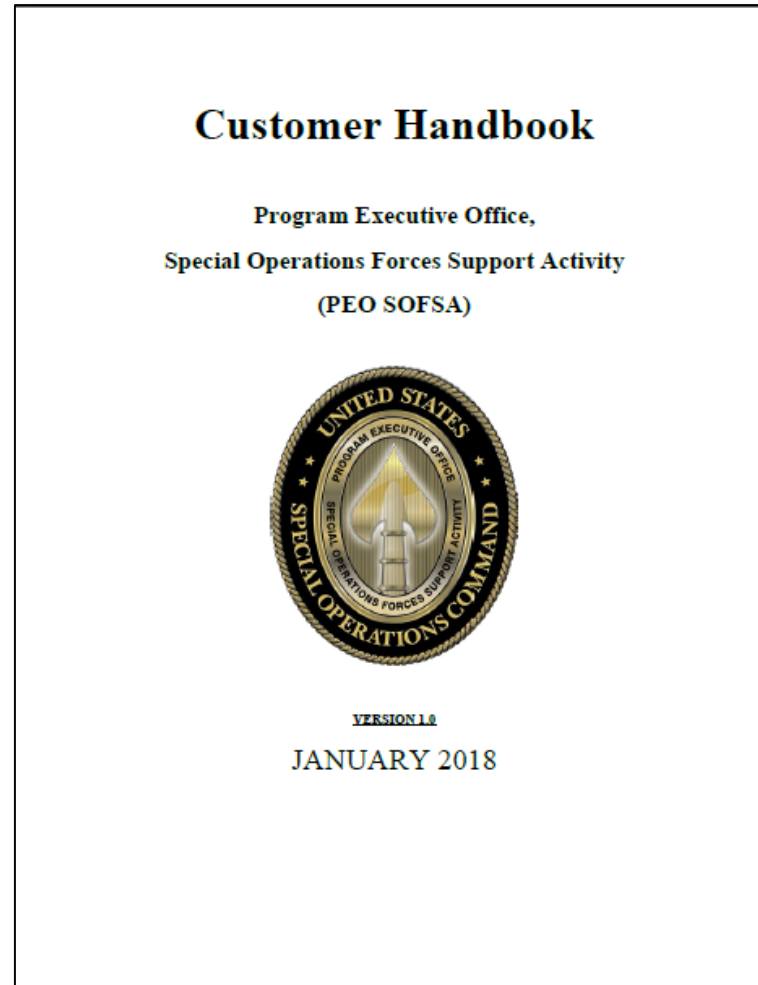


PEO SOFSA Points of Contact

<u>OFFICE</u>	<u>NAME</u>	<u>EMAIL</u>	<u>PHONE</u>
PEO SOFSA	COL Jack Dills	jack.dills@sofsa.mil	859-566-5001
DEP PEO SOFSA	Charlie Fields	charlie.fields@sofsa.mil	859-566-5002
Program Support Division	Fred Little	manfred.little@sofsa.mil	859-5665076
Business Management Division	John Rogers	john.rogers@sofsa.mil	859-566-5051
Enterprise Management Division	Mark DeGroat	mark.degroat@sofsa.mil	859-566-5011
Finance Management Division	Mark Robinson	mark.robinson@sofsa.mil	859-566-5030
Strategic Plans	Sean McBride	sean.mcbride@sofsa.mil	859-566-5022
Security	Jason Shropshire	jason.shropshire@sofsa.mil	859-566-5024
Front Office Admin	Melissa Childers	melissa.childers.ctr@sofsa.mil	859-566-5003

Customer Handbook

- Customer Handbook <https://home.sofsa.mil/peo> *This site is only accessible by users with a CAC*



Key Take-Away's

- **Responsive**

- PEO SOFSA's Capabilities Provides a Broad Spectrum of Solutions to SOF
- Dedicated to SOF Community for Logistics Services
 - SOF Customers do not Compete with DoD, Services, or other Industry Priorities

- **Flexible**

- “Pre-competed” Base Contract Competitively Awarded as Best Value
- “Speed of SOF” – Ability to Rapidly Process Requirements Needs to Task Order Award (In as little as 10 days, Depending on Complexity)

- **Tailorable**

- Task Orders Utilize All Contract Types Based on Need and Best Value
- Data Driven Metrics and Management
- Visibility through Dashboard/Portal
- Cost-effective through Low Overhead, Low Direct Costs, Stable Rates

Questions

