



SPECIAL OPERATIONS FORCES INDUSTRY CONFERENCE
Win • Transform • People

Mr. Glen Cullen *Program Manager*
SENSITIVE SITE EXPLOITATION



Program Manager Sensitive Site Exploitation



Program Manager

Sensitive Site Exploitation

Fielding to Components

- Continuously Tailored
- Two/Three Annual Increments

SSE Priorities

- On Site Collection, Verification, and Enrollment of Biometrics (Iris, Face, DNA, Fingerprint, etc.)
- Apply Forensic Principles to Captured Enemy Materials for Rapid Detection, Collection, Identification, Analysis, and Dissemination to the Intelligence Community

SSE Portfolio

- ID Kits
- Enrollment Kits
- Operator Advanced Kits
 - SOF DOMEX Kit
 - SOF Collection Kit
- Enabler Kits
- Exploitation Analysis Centers (EAC) Shelter

ACQUISITION STRATEGY

- Commodity Procurement Project (CPP)
- COTS (and modified versions)

PERIOD OF PERFORMANCE

- Deliver Capability Within 90-Days to 1 Year of Award (Norm)

MILESTONES

- Kit Selection semi-annually
- NET Continuously
- Technical Insertion to Maintain Relevancy

POINT OF CONTACT

- Technology & Industry Liaison Office
- TILO@SOCOM.mil
- 813-826-9482

FUNDING

<u>APPROP</u>	<u>FY18</u>	<u>FY19</u>
• O&M	\$ 17.19M	\$ 9.40M
• PROC	\$ 2.44M	\$ 6.31M
• RDT&E	\$ 0.18M	\$ 0.19M

CURRENT CONTRACT/OEM

- T-REX Multiple Award IDIQ Contract
- Multiple OEMs – Contact TILO

Program Manager

Sensitive Site Exploitation



N-G BioSled
Fingerprint, Facial and Iris Imagers

Identification (ID) Kits



Metal Tec 1500
Metal Detector



SEEKERe MDK

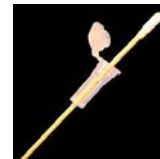


FirstDefender



TruDefender

Explosives And Trace Element Detection



DNA Swab



Latent Print Collection



Forensic Lights

DNA And Latent Print Collection



Kojak Multi-
Fingerprint Scanner



ID Badge Printer

Enrollment (EN) Kit

Biometrics



CELLEBRITE
UFED 4PC

CELLEX



MSAB
XRY/SIMEX

SCG Canada
CFID

SURPEX



LogiCube
Forensic Talon



MCM Solutions
Detego

MEDEX

Document and Media Exploitation

Tactical Site Exploitation (Forensics)

EAC



EAC Shelter (x2)

Rapid DNA



ANDE

Trace Element Analysis



Griffin 460

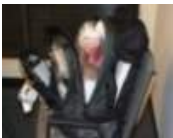
Latent Print Extraction



Latent Print Fuming Chambers



Latent Print Copy Station



Latent Print Collection Kit



BattleLite Forensic Lights



TracER Lite



Laser



First Defender

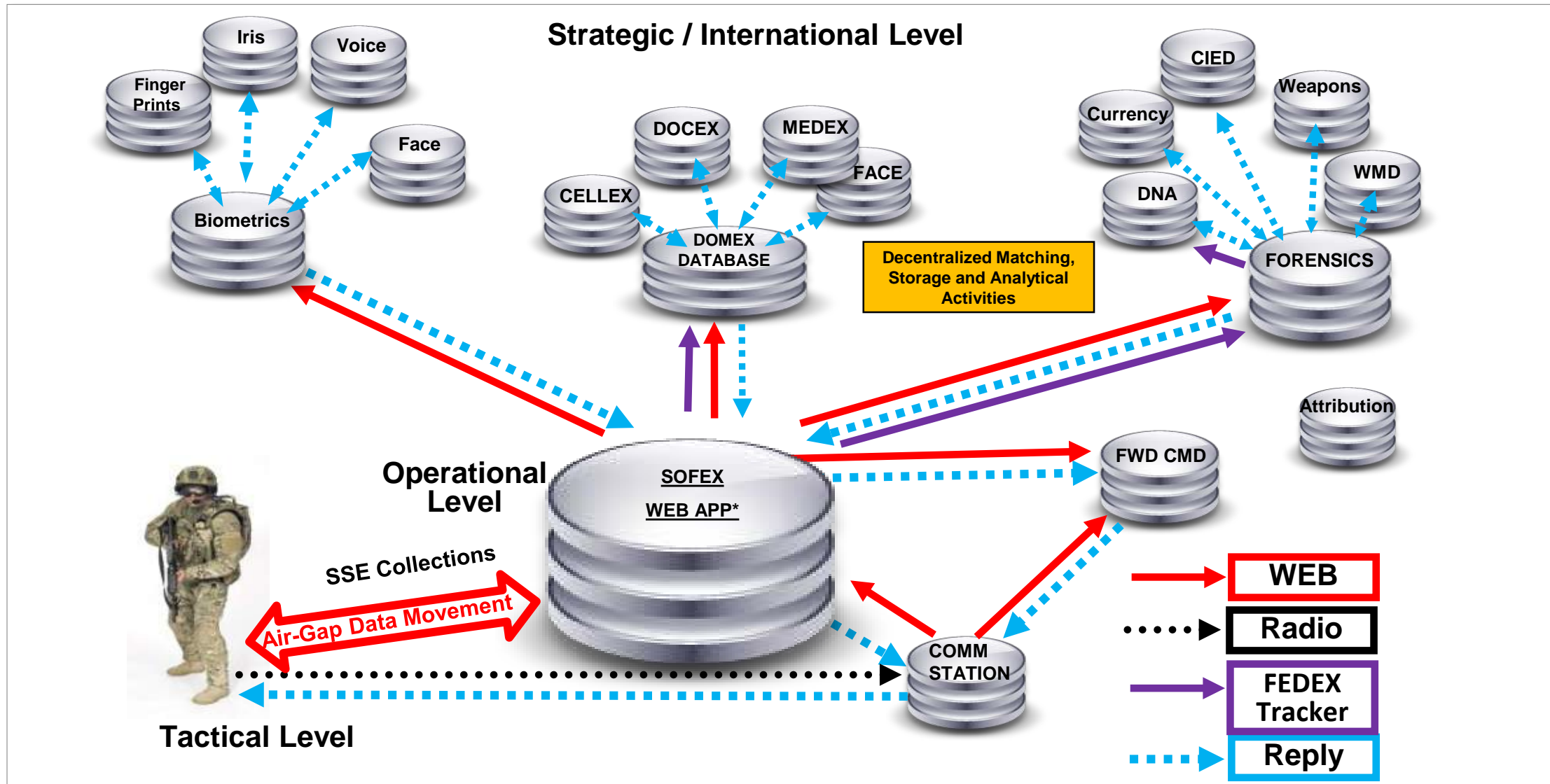
TruDefender



SABRE 5000

SOF Exploitation Portal

SOFEX Portal Enables Tx/Rx of Intelligence Data



Capability Insertion Opportunities

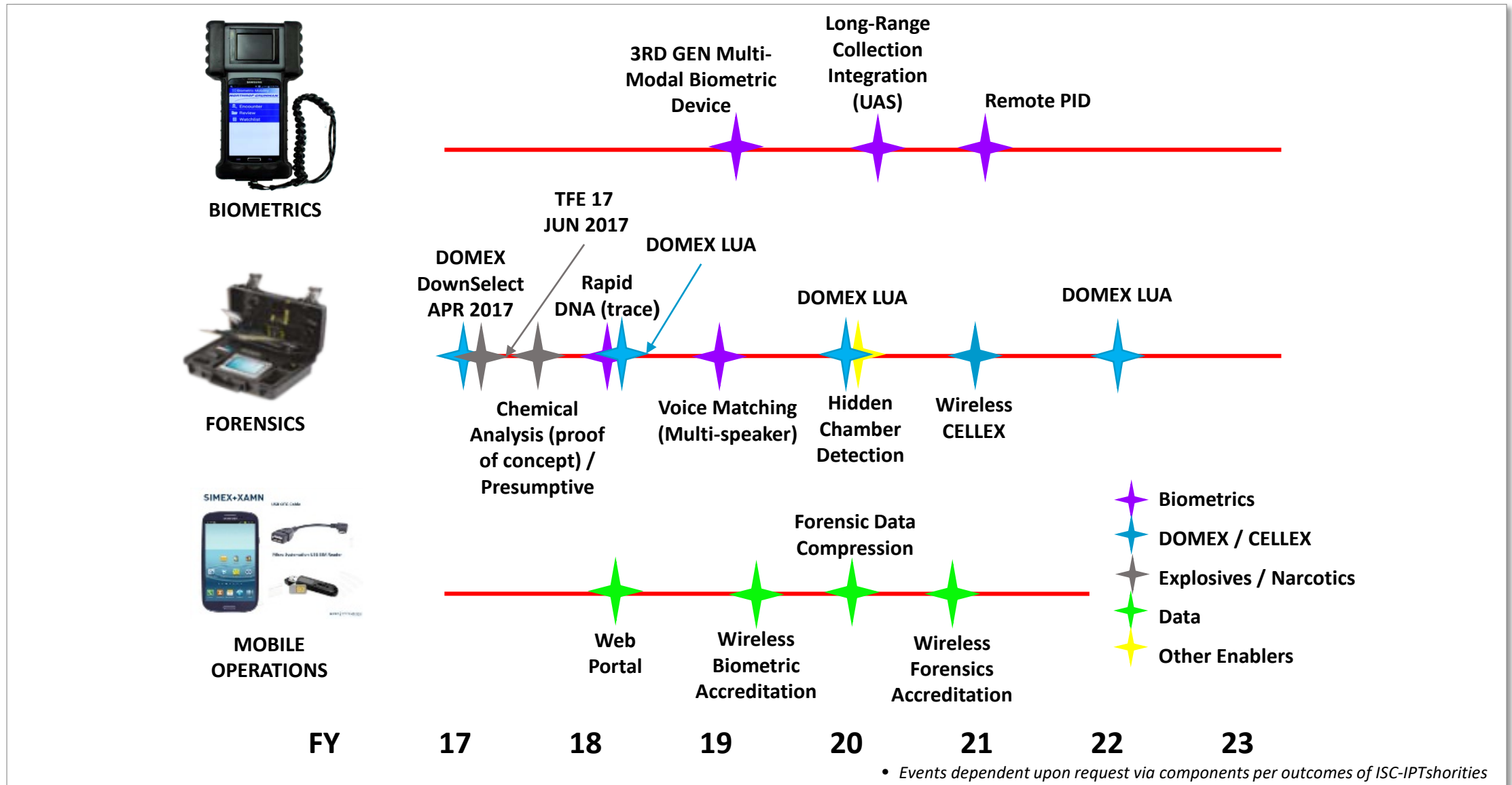
- Stand-off/Remote Facial Recognition And Iris Capture From Multiple Modalities
- Artificial Intelligence / Machine Learning to Aggregate Digital Identities
- Triage (Documents, Media, Chemistry)
- Gisting
- Data Transport Segments for Long Distance Transfers
- Wireless Mobile CELLEX/DOMEX Collection Devices
- Dustless Latent Print Collection



BAAs published on fbo.gov

- *PM Rapid Capabilities Insertion (RCI) (Published in Spring)*
- *PEO SRSE Appendix G-1 v18.1 (Closes End of Fiscal Year)*

Capability Insertion Roadmap



General Considerations

- **Average User - Proficient in Mobile Electronics (24 to 35 years old)**
- **SWAP-C**
- **Software**
 - Non-Proprietary
 - Windows 10 (Linux if dual boot capable)
 - Compliant w/ Intelligence Community Databases
- **Ruggedized (*MIL STD 810-G*)**
- **Reduce User Cognitive Workload**
- **Basic Proficiency Accomplished in One Eight Hour Session**
- **Limited Time on Objective**
- **Logistics**
 - Shipping and Storage
 - DOT Compliant
 - Shelf Life

Events

- **Business Process:**



- **Upcoming Events:**

- **Tactical DOMEX Event (TDE) – March 2019**
 - Focus areas: Telematics (Static Extraction), Long-range Facial Recognition, Triage
 - RFI TDE 19 – June 2018
 - TILO for TDE 19 – September 2018
- **Technical Experiment – Tentative March 2019**
 - RFI TE 19 – November 2018
- **FY20 Technology Focus Areas: Anti-forensics Detection, Auto Document translation**

All RFIs posted on FedBizOpps