



NDIA 21320: HPCMP CREATE™ as an Early Example of a DoD “Software Factory”



Richard P Kendall, Ph.D. with D.E Post, Ph.D.
October 2018

Distribution A: Approved for Public release; distribution is unlimited.

This Presentation will address:

CREATE as an early example of of the DoD “Software Factory” Concept:

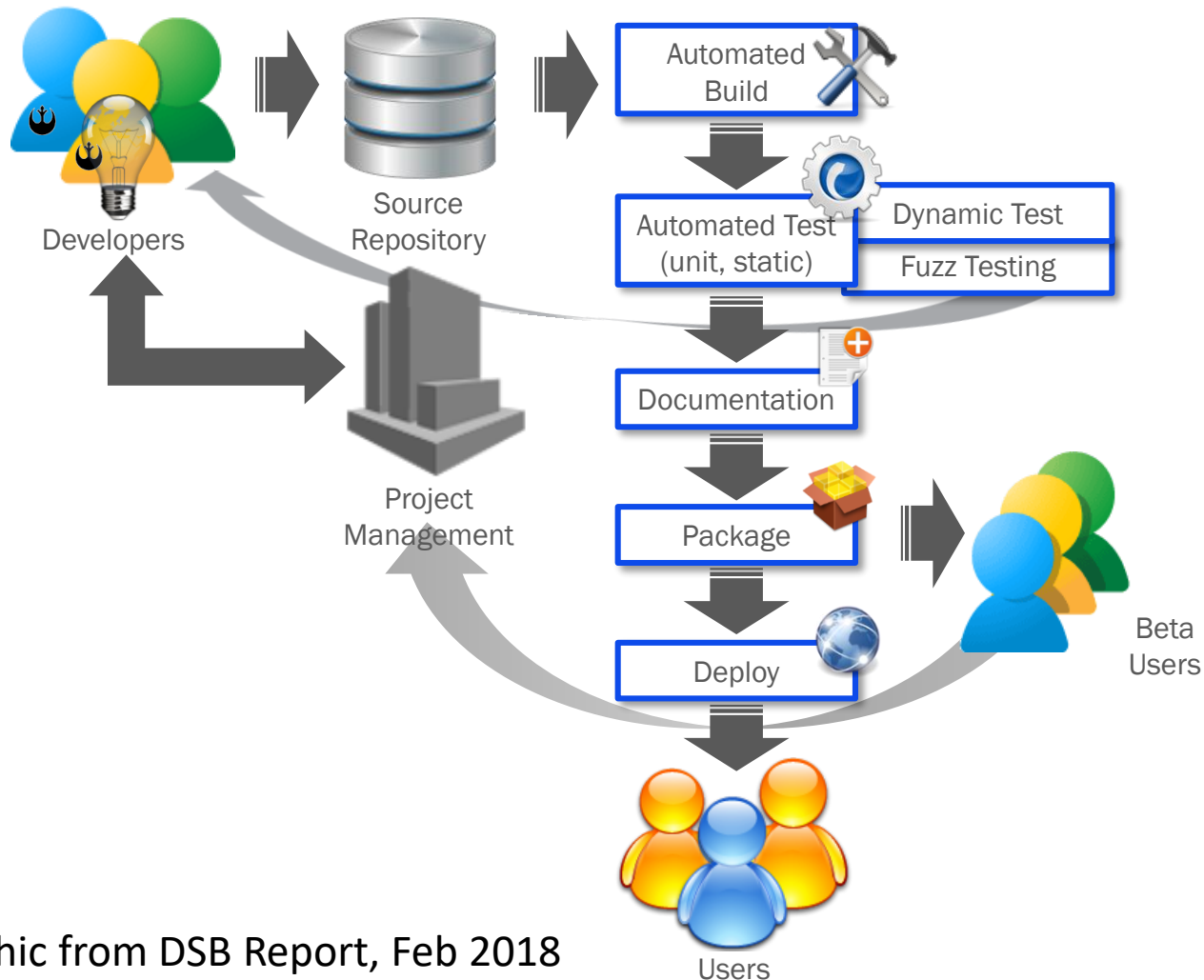
- **What is a “Software Factory?”**
- **Why is it important?**
- **The early CREATE Example**

Software Factories

The Defense Science Board(DSB) defines a “Software Factory” as:

- A small software development team (5-15 members)
- Supported by an *highly automated* development infrastructure (development tools, computers, networks, storage devices, etc.)
- Focused on *continuous, iterative* product development using **Agile development practices**

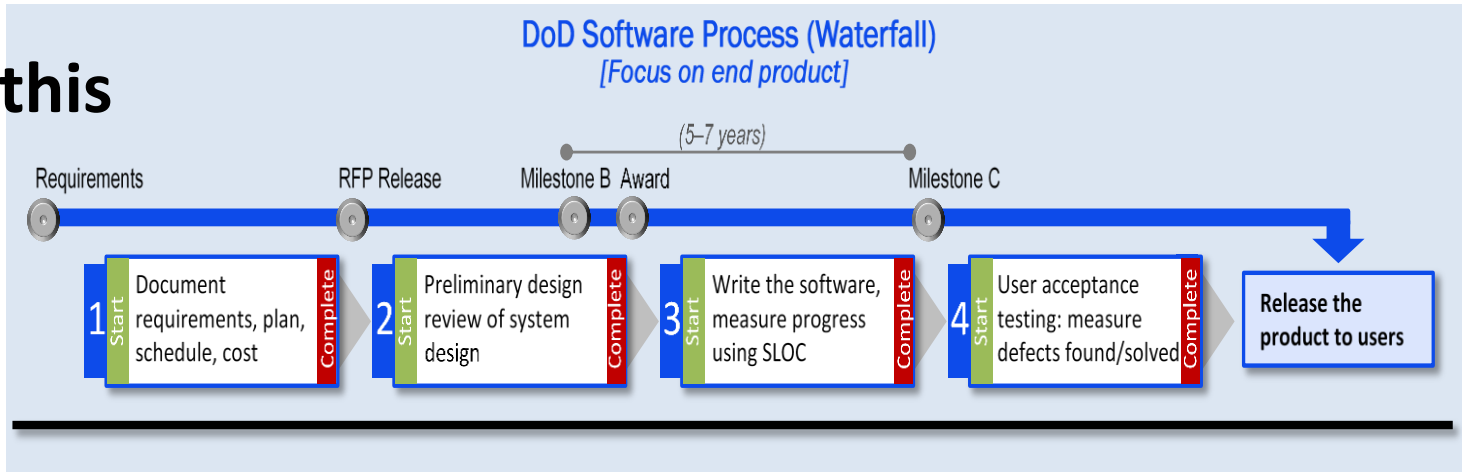
Commercial Software Factory*



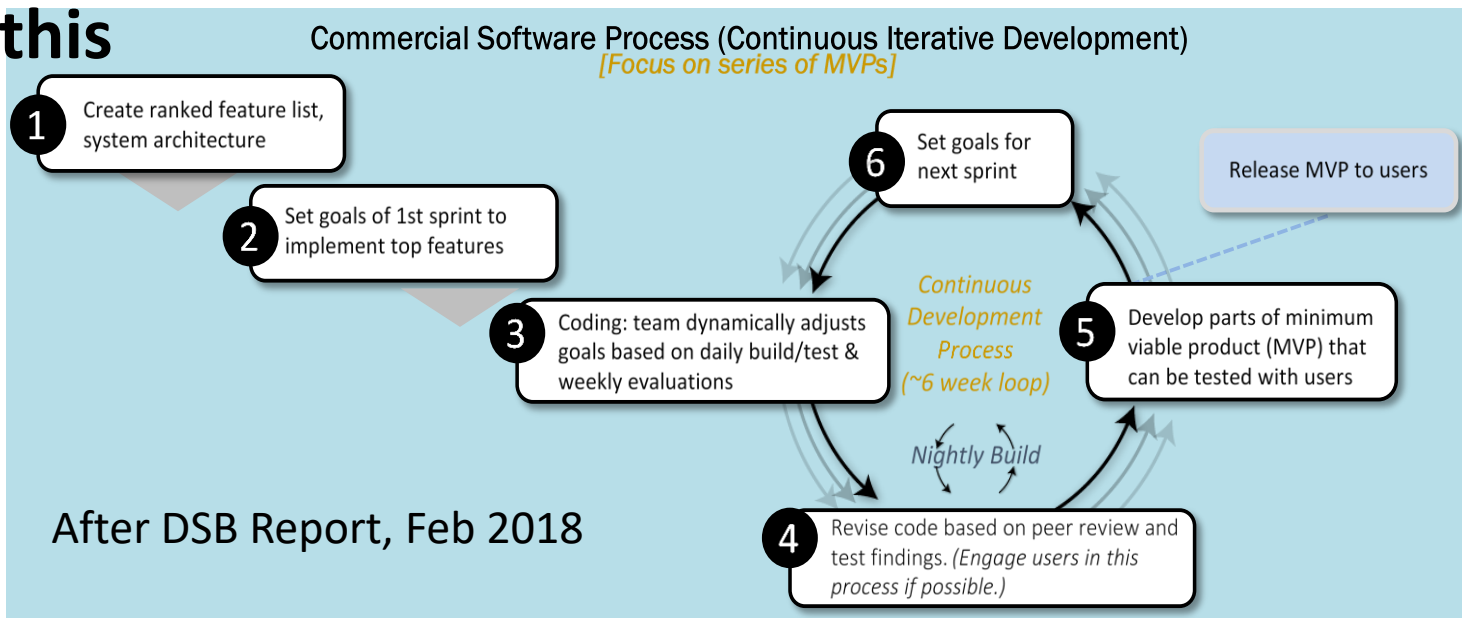
* Graphic from DSB Report, Feb 2018

Continuous, Iterative Software Development

Not this

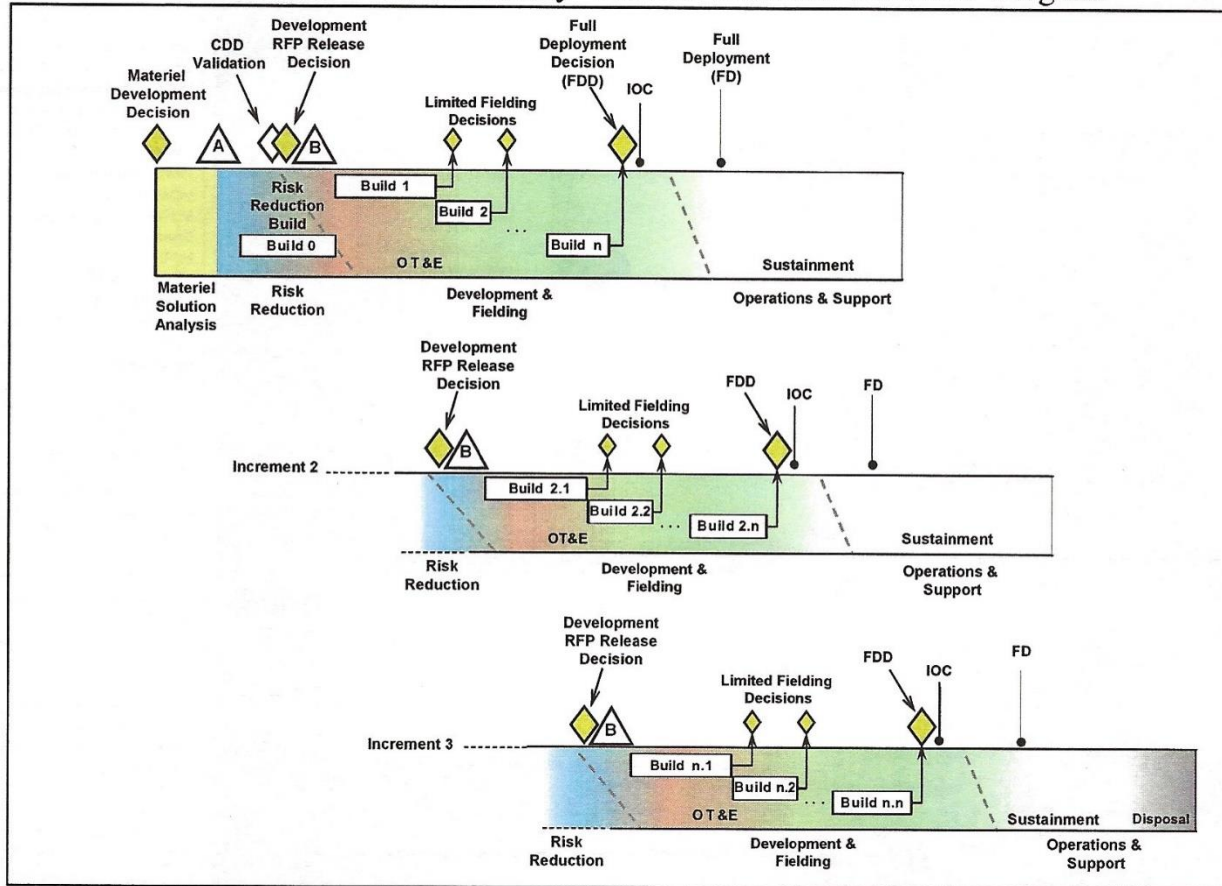


But this



Defense Acquisition Lifecycle Model 3

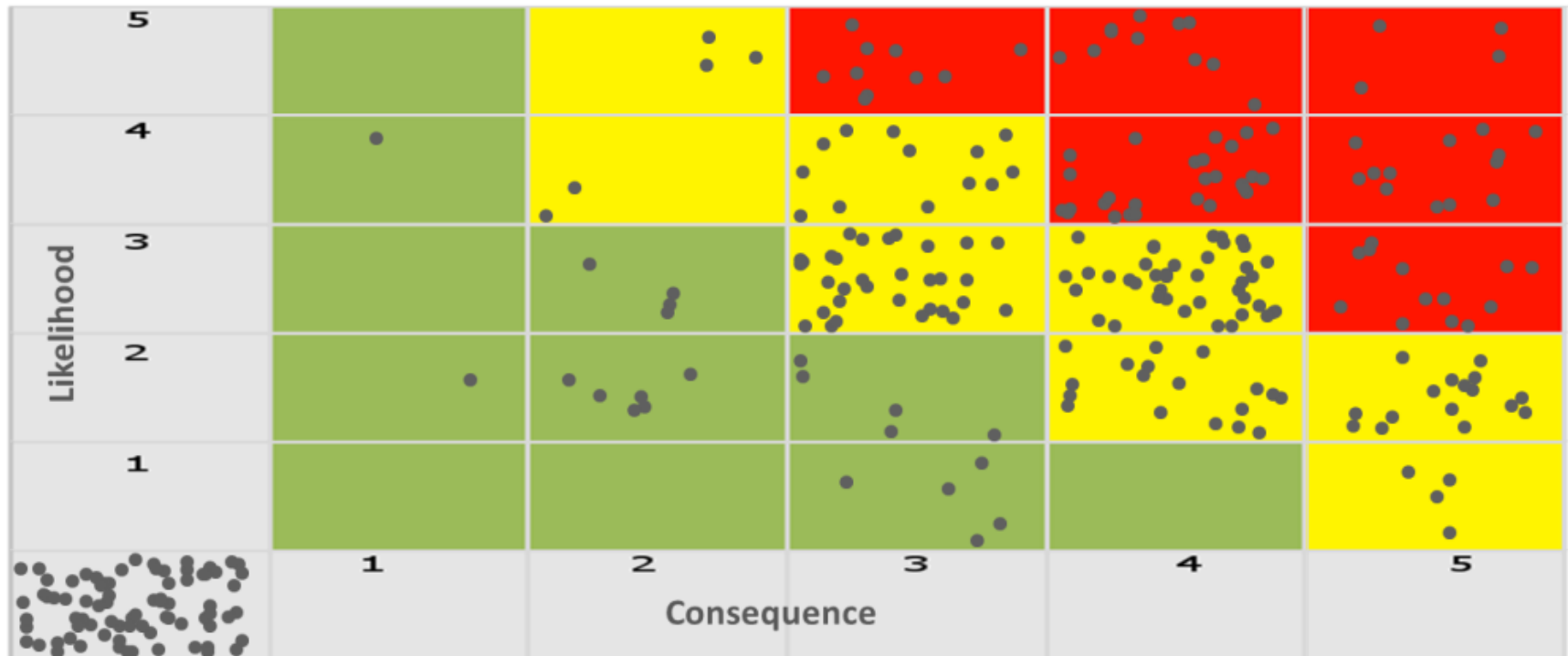
Model 3: Incrementally Fielded Software Intensive Program



Why is this Important?

Software Drives ~60% DoD Program Risk (after DSB report)

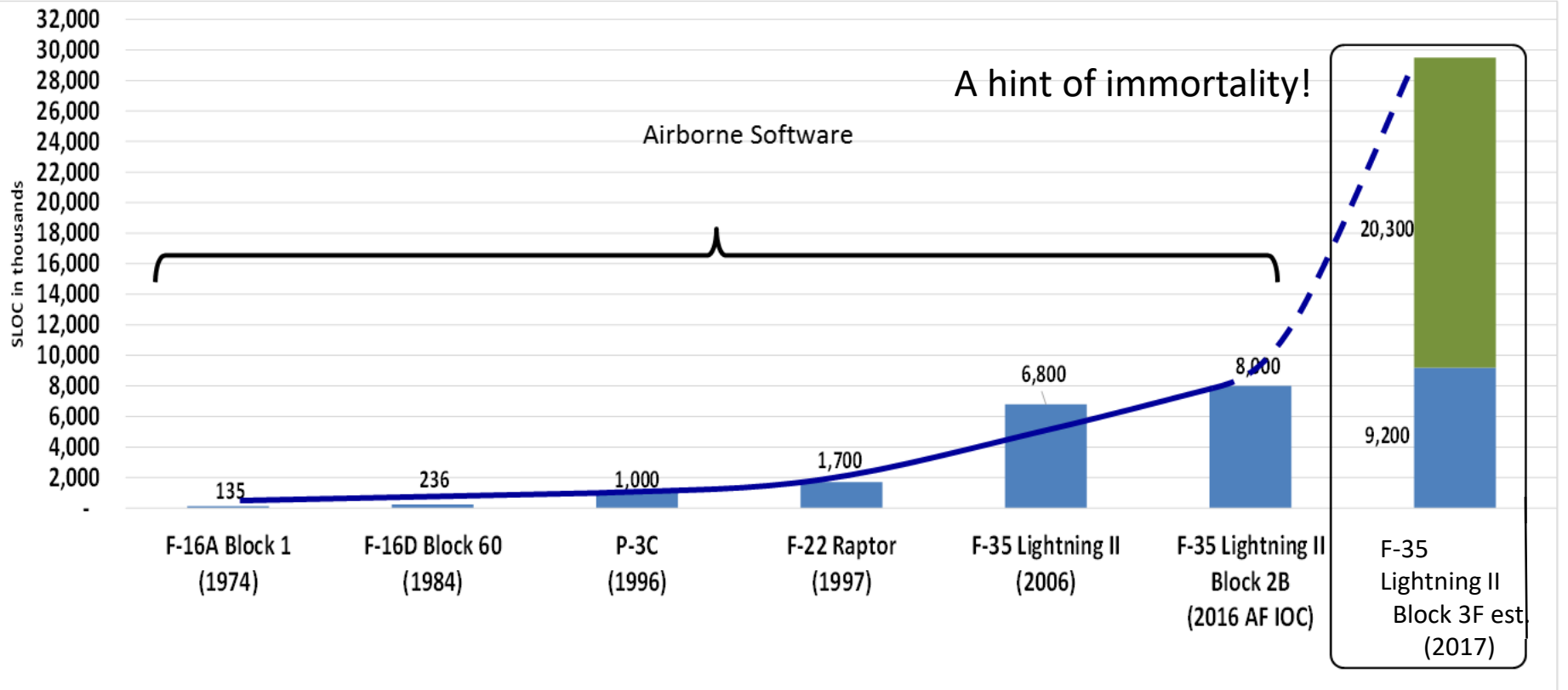
FY14 - FY16



Software not in top program risks

* Graphic from DSB Report, Feb 2018

Change Driver: Explosive Growth in Source Code for Defense Systems-- Avionics



The Commercial Case for Agile Development

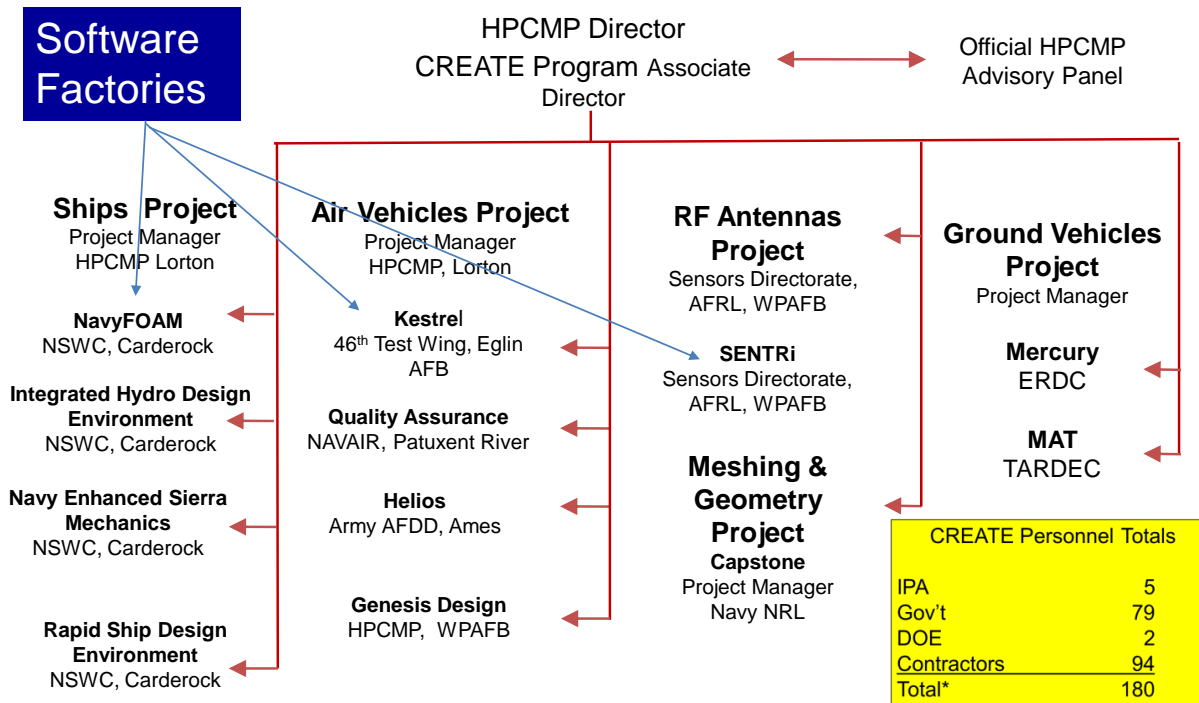
A meta-survey* of 29 studies (of 300 analyzed) concluded the following return on investment:

- 29% lower cost
- 91% better schedule
- 50% better quality
- 400% better job satisfaction

* David Rico, “What is the ROI of Agile vs. Traditional Methods”

CREATE Software Factories

CREATE began to establish “Software Factories” in 2008

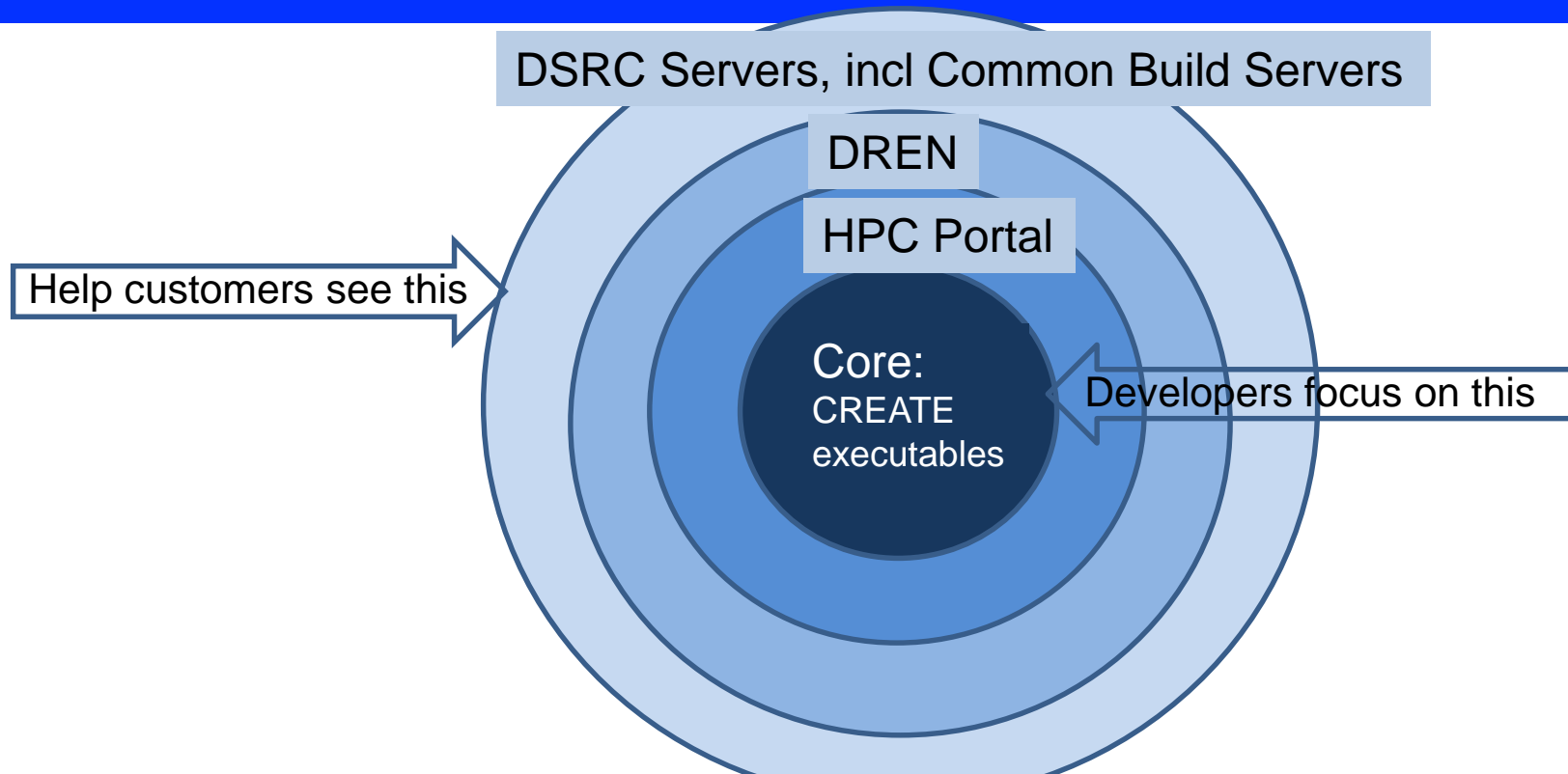


A Multi-Institutional, Multi-Organizational, Distributed Program

HPCMP CREATE™ 17 Nov 2017
Page-9

The CREATE Infrastructure

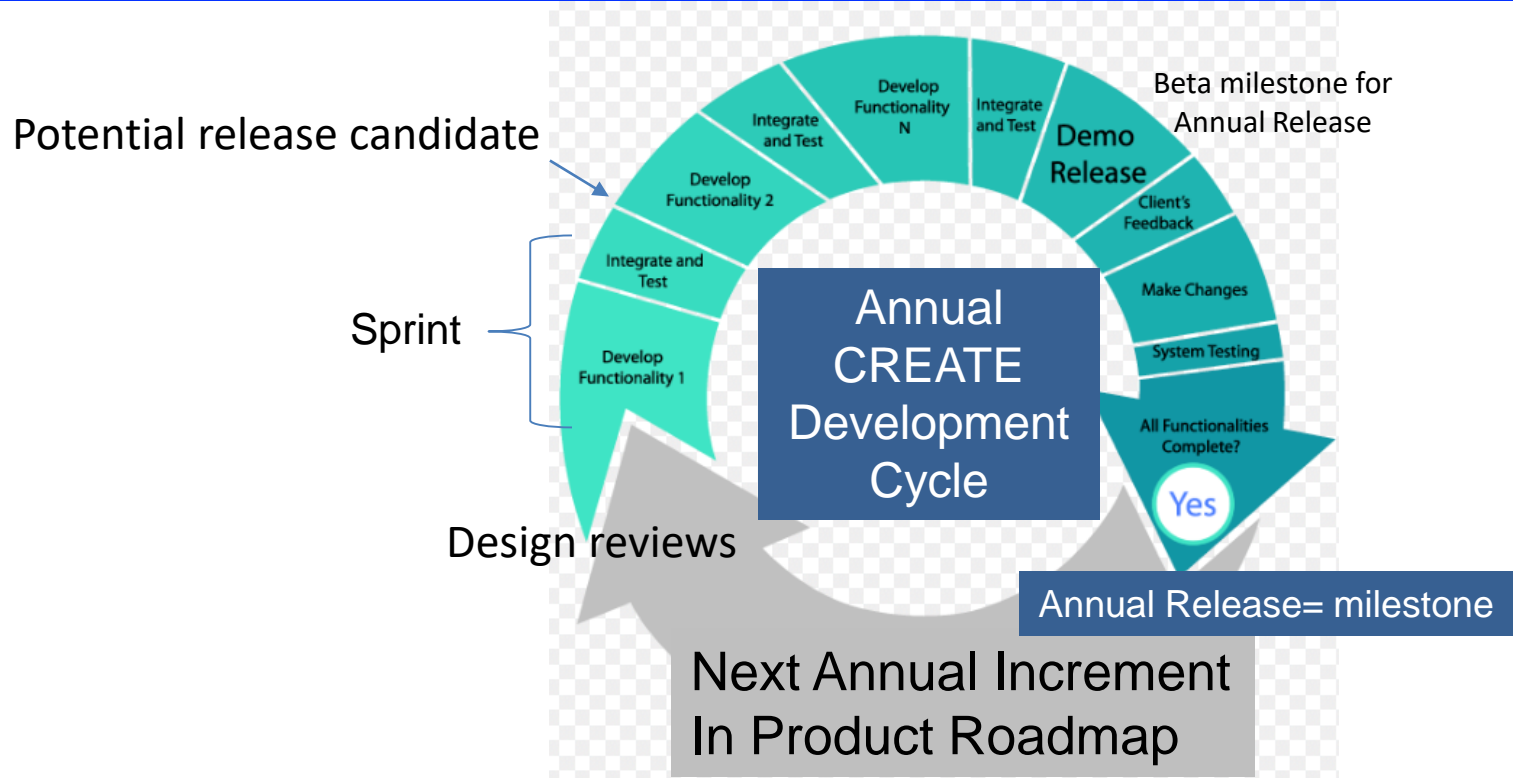
From the beginning CREATE embraced an extended view of the CREATE Product



Ensure that Customers see the “whole” product

The CREATE Approach to Agile Development

The CREATE Approach—“Disciplined Agile” based on Scrum



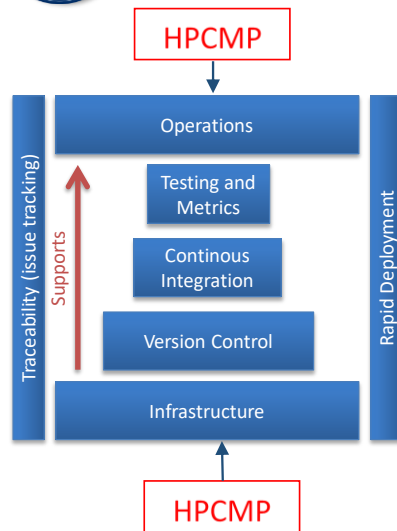
Our approach couples flexibility with accountability

Figure after info@matrix-soft.org

Software Factory Software Infrastructure*

UNCLASSIFIED

Software Factory Source Selection Criteria Suggestions



Comparison of DSB Software Factory with HPCMP/CREATE Version of Software Factory

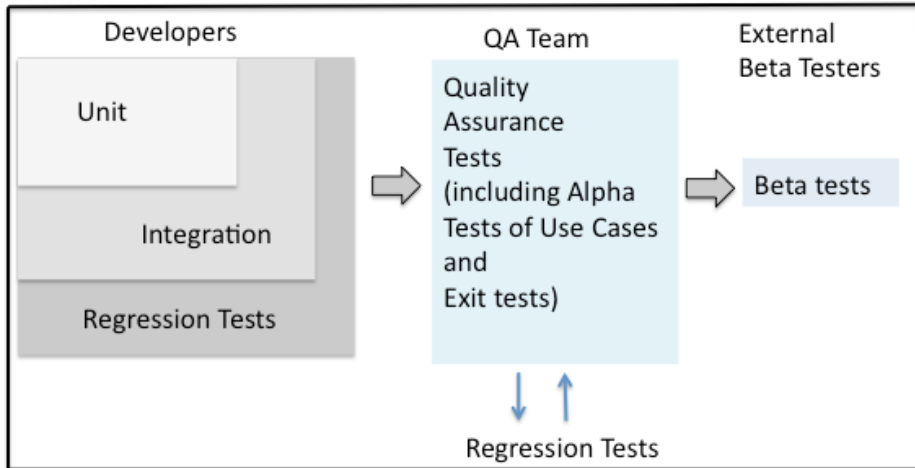
HPCMP/CREATE operating capabilities are highlighted in red

- Configuration management software (e.g., Puppet, Chef, Ansible) **Git, SVN**
- Continuous Integration (build and test) Systems (e.g., Travis CI for hosted service, Jenkins for open source application) **Jenkins**
- Scripts and code used to release software (e.g., Python scripts) **Python, PERL,...**
- Servers, network or other infrastructure that support release tools **CREATE Server, Portal, and Continuous Build Server**
- Software and tools to support developer self-service operations (NewRelic for application performance over time, diagnostic tools, monitoring) **TotalView, Tau, Valgrind,...**
- External test frameworks (e.g., Jersey Test Framework, Testplant/Eggplant) **SCCI (Jenkins add-on), and Home Grown Tools**
- External operational monitoring and log mining tools (e.g., Splunk, Elasticsearch + Logstash + Kibana (ELK) Stack) **SIDPACK,...**
- Source code repositories (e.g., Github for hosted service, GitLab for open source application) **Github, Redmine, SVN,...**
- Issue tracking systems (e.g., JIRA, Trello, GitHub) **JIRA, Github**
- Container driven tools (e.g., Docker, Elastic Container Service (Amazon Web Services (AWS)), Kubernetes) **CREATE Server**
- Requirements management (e.g., Doors, Blueprint) **JIRA, Agile**
- Infrastructure and cloud providers (e.g., AWS, Rackspace, Azure, RedHat OpenShift, Pivotal Cloud Foundry) **DoD HPCMP provides**
- IDEs integrated DevOps process **cloud-like services—5 HPC computer centers with 11 High Performance Computers linked by a high speed network**

*From DSB Report, Feb 2018, based on SEI DevOps

CREATE Software Quality Control

A Software Factory Requires Quality Control



- **Annual Releases**
- **Hierarchal Testing**
- **External, Knowledgeable Testing Group**
- **User Testing (Beta)**

Fiscal Year	FY2011				FY2012				FY2013				FY2014				FY2015				FY2016				FY2017*			
Quarter	1	2	3	4	1	2	3	4	1	2	3	4	1	2	3	4	1	2	3	4	1	2	3	4	1	2	3	4
AV-DaVinci				1								2								3				4				5
AV-Hellos							2					3				4				5				6				7
AV-Kestrel			2									3				4				5				6				7
MG-Capstone	1						2					3				4				5				6				7
RF-SENTRI												3				4				5				6				7
Ships-IHDE												4				5				6				7				8
Ships-NavyFoam	1							2				3				4				5				6				7
Ships-NESM	1											2				3				4				5				6
Ships-RSDE												11				12				13				14				15

Distribution A: Approved for Public release; distribution is unlimited

The Practical Aspects of
Computational Science and Engineering
Page-26

Based on HPCMP CREATE-AV testing practices

CREATE Tools Impacting DoD Programs

NAVSEA



DDG-1000



CVN-78 Class
So-Called
"Valley of
De..."

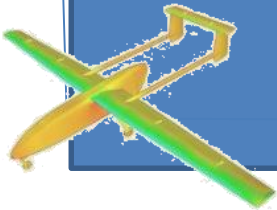


Ohio SSBN
Replacement



LX(R)

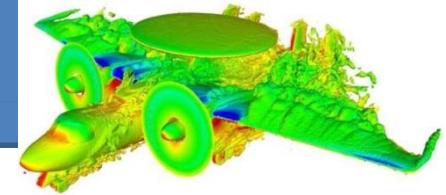
NAVAIR



Aerostar & Raven UAVs



F/A-18 E/F/G



E-2D

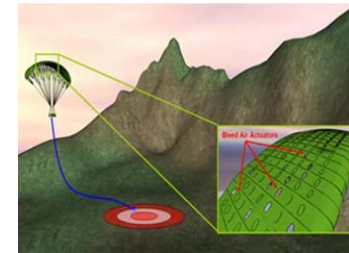
ARMY/USMC



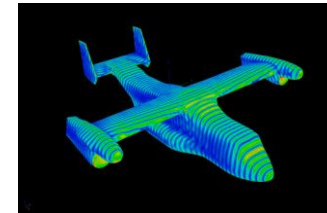
UH-60



CH-47 (ACRB)



Guided Airdrop
(RDECOM)

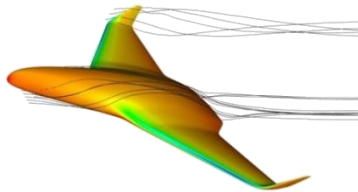


V-22

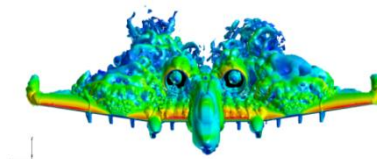
AFLCMC



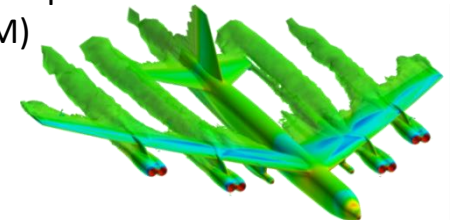
F-15 SA/DB-110



Strategic Airlift CP&A



A-10



B-52

Thank You!

**NDIA 21320: HPCMP CREATE™ as an Early Example
of a DoD “Software Factory”**

Richard P. Kendall, Ph.D.

richard.p.kendall4.ctr@mail.mil

(505) 660 0976



Back-up slides

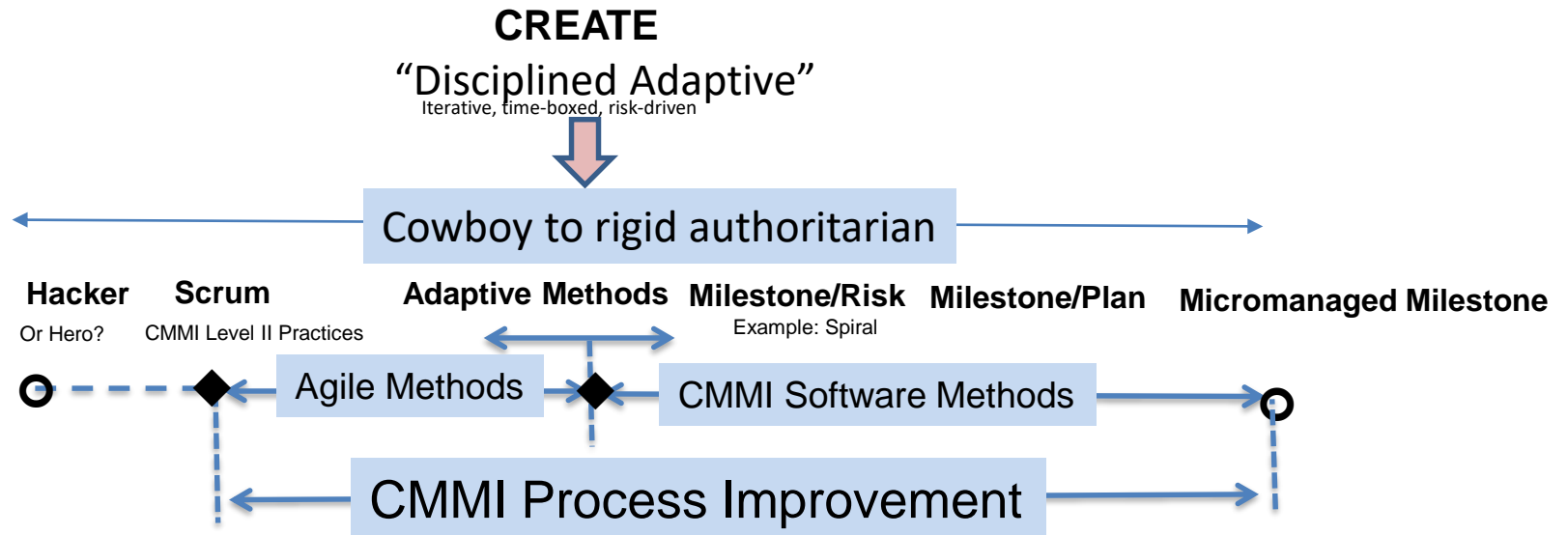


NDIA 21320

Distribution A: Approved for Public release; distribution is unlimited.

CREATE Software Development Workflow for Distributed Teams

- *Balance flexible planning with milestone-based accountability.*

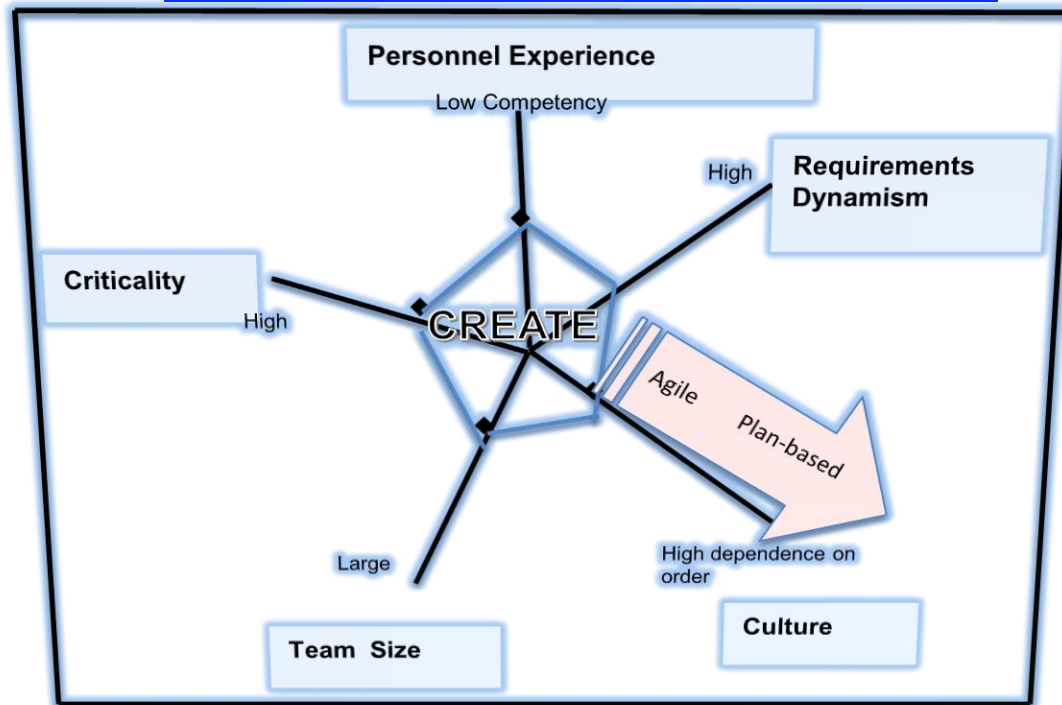


after Boehm, “Getting Ready for Agile Methods with Care,” IEEE Software, 2002

CREATE: Disciplined Adaptive Workflow Management based on Scrum (balance risk and value)

Software Development Practice Drivers

Development Environment Indicators



Notional Home Ground Chart for CREATE

after Boehm, Using Risk to Balance Agile and Plan Driven Methods, IEEE Computer Society, 2003

The attributes of CREATE environment favor an Agile Development approach

Example: Kestrel Software Architecture

