

Test and Evaluation

The Key to Successful Acquisition Outcomes

17 May 2018



**Homeland
Security**

Science and Technology

Steve Hutchison

Director
Office of Test and Evaluation

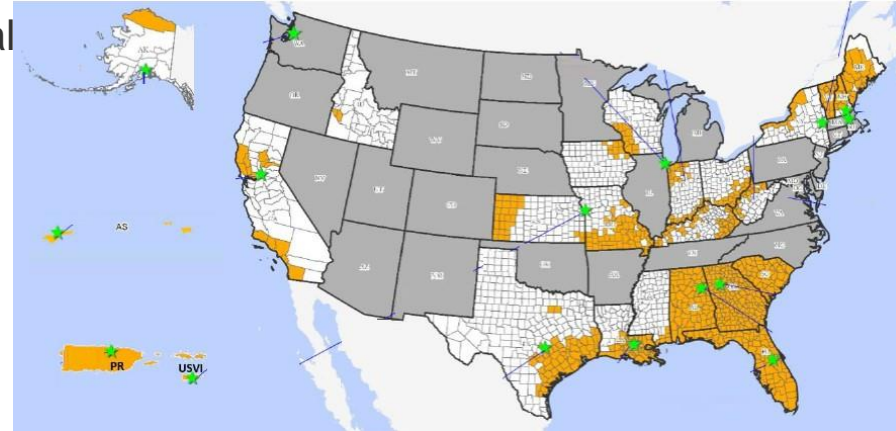
DHS Test & Evaluation Year in Review

- FEMA Logistics Supply Chain Mgmt System FOT&E
- USCG Polar Icebreaker Model Testing
- CBP TECS Modernization IOT&E
- USCG NSC FOT&E
- TSA Automated Screening Lanes UON Operational Utility Assessment
- USCG MH-65 OA
- CBP Wall Prototype Testing
- USCG 47' Motor Lifeboat



FEMA Logistics Supply Chain Management System (LSCMS)

- End-to-end supply chain management for critical disaster assets and commodities.
- LSCMS provides situational awareness and in-transit visibility into the entire supply chain, request for assets and commodities, orders to FEMA and partners, transportation, inventory management
- Conducting FOT&E Feb – June 2018

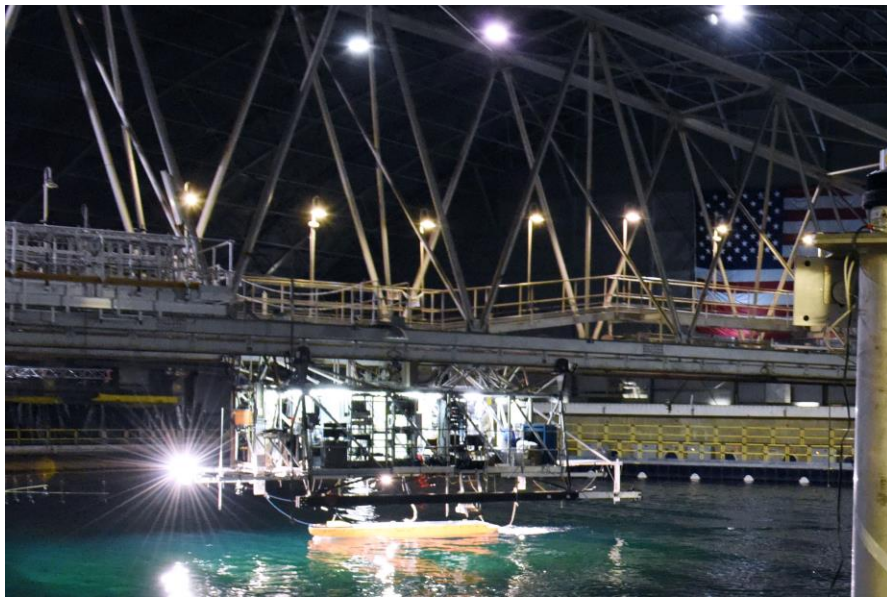


USCG Polar Icebreaker

- The United States has vital national interests in the polar regions.
 - defense readiness in Arctic and Antarctic regions;
 - provide logistical support, including vessel escort, to facilitate movement of goods and personnel necessary to support scientific research, commerce, national security activities and maritime safety.
- US Coast Guard Heavy Icebreaker Polar Star
 - Commissioned 1976.
 - Only active heavy icebreaker in the fleet.



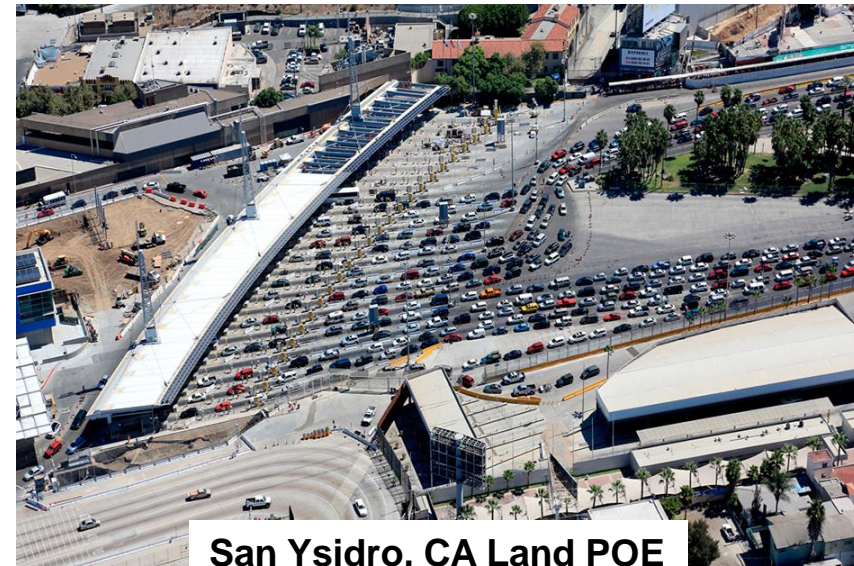
USCG Cutter Polar Star



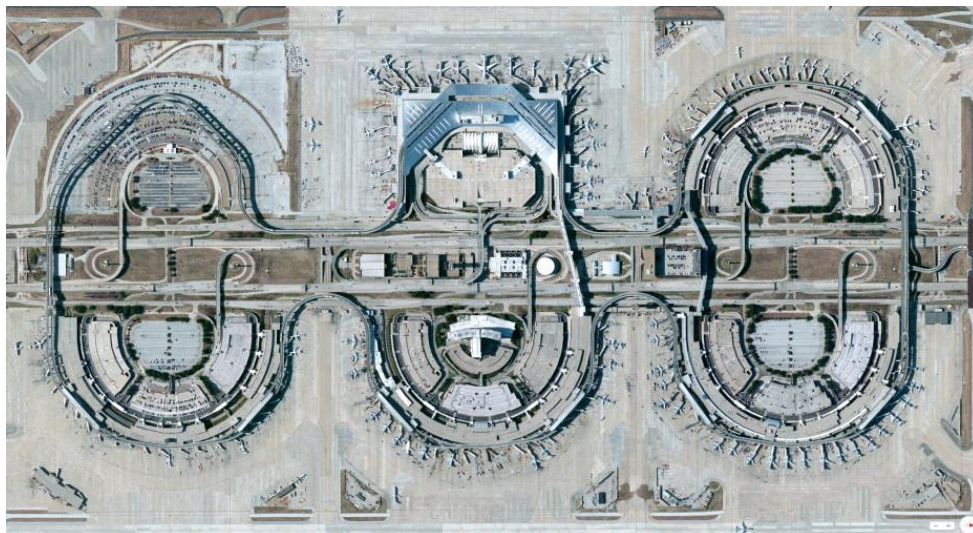
- Polar Star has completed five Operation Deep Freeze deployments to resupply McMurdo Station in Antarctica.
- Coast Guard expects Polar Star to remain in service through approximately 2020 to 2023.
- In Fall 2017, program completed tow-tank testing at NSWC Carderock.

CBP TECS Modernization

- Primary traveler screening tool at 329 Ports of Entry (POE) in the U.S. and 15 preclearance offices outside the U.S
- OT&E occurred in operationally active land, sea, and air ports of entry over 7 months



Dallas-Fort Worth, TX Air POE



USCG National Security Cutter

- Centerpiece of the Coast Guard fleet; replaces the 378-foot high endurance cutters, which have been in service since the 1960s
- FOT&E November-December 2017
- Cybersecurity CVPA February – March 2018
- Cybersecurity Adversarial Assessment August 2018



TSA Automated Screening Lanes

- TSA Urgent Operational Need (UON) for Automated Screening Lanes (ASL) to speed throughput at aviation security checkpoints.
- ASL system consists of
 - currently fielded Advanced Technology (AT) carry-on baggage screening system
 - multiple divestment stations
 - updated Primary and Alternate Viewing Station user interface
 - data reporting system
 - automated tray-handling
 - bin return system
 - automated bin diverter
- Conducted *Operational Utility Assessment* in April 2017



USCGC MH-65

- MH- 65 Dolphin is a short range recovery helicopter that conducts search and rescue and law enforcement missions.
- Final segment of upgrades to modernize the automatic flight control system, digital display cockpit, and new electro optical and infrared sensors.
- Completed OA February 2018



The Wall

- Impede and deny adversaries freedom of movement as a function of border security.
- Influence and control the border environment and initiate a timely response to detected illicit activity.
- Prototype testing conducted Jan 2018



USCG 47' Motor Lifeboat

- Primary search and rescue platform in surf and heavy weather conditions.
- fleet of more than 100 MLBs is approaching end of its planned 25-year service life.
- SLEP will extend the useful life of the MLB by 20 years.

47' MLB in Rough Seas

47' MLB Self-Righting Test



Workforce Development

- Operational Test Director Course
- New T&E Career Field Track:
T&E for Information Technologies
- Inaugural DHS T&E Managers
Symposium
- Cybersecurity T&E Continuous
Learning Module
- Scientific Test and Analysis
Techniques Workshop
- IEF Workshop
- Reliability Workshop



Key to success: highly skilled Test and Evaluation workforce

Summary

**If you want to know your system works, *you have to test it.*
If you want to know *with confidence*, you have to plan,
resource, and conduct T&E accordingly.**

**Homeland Security Operators
are counting on us to get it right.**



47' MLB in Rough Seas



47' MLB Self-Righting Test

