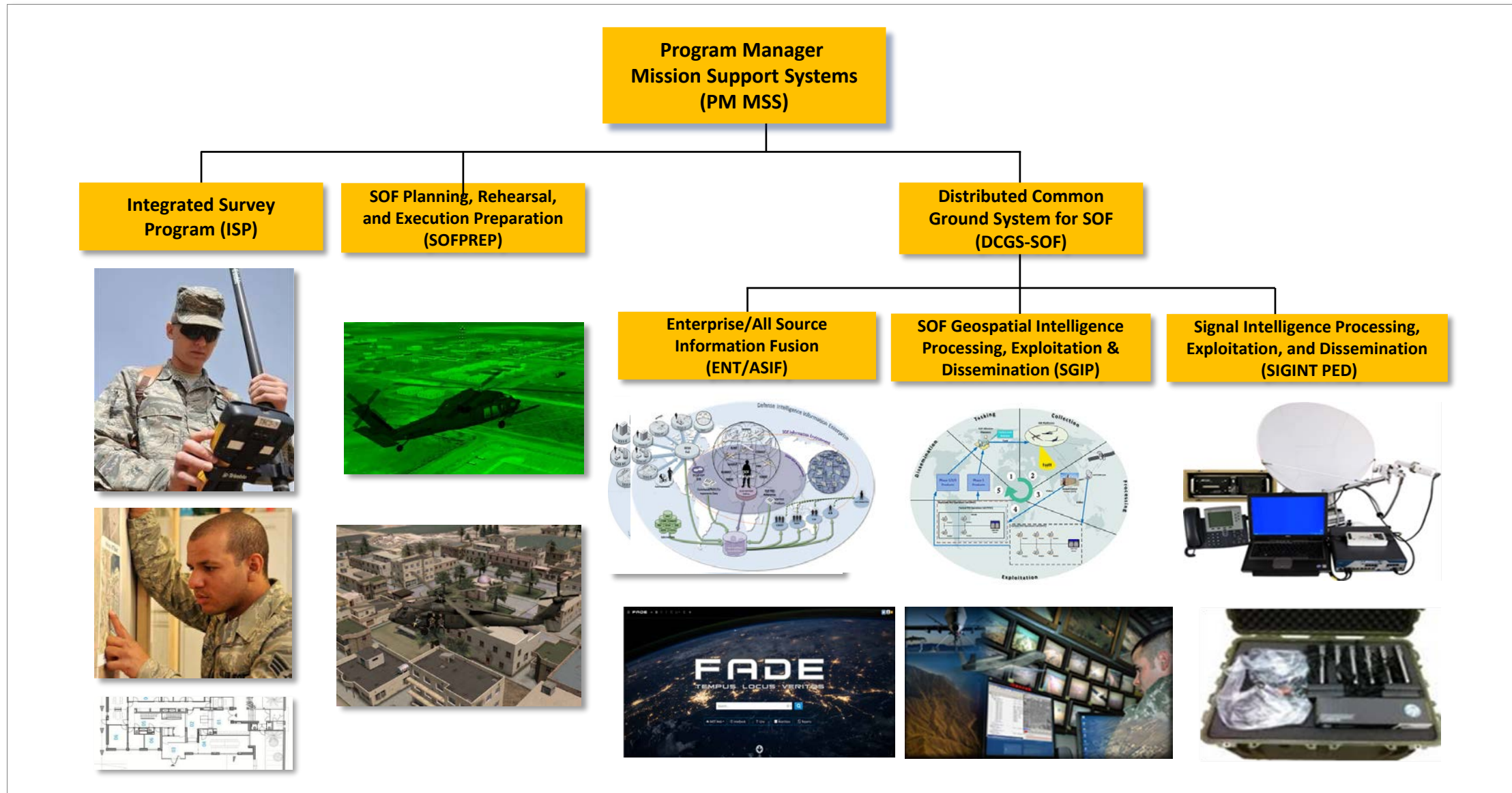


Program Manager Mission Support Systems



Program Manager Mission Support Systems

Multi-INT Capabilities for Operational Intelligence:

- Integration & Interoperability to the Tactical Edge
- Agile Acquisition of Emerging Technologies

Priorities:

- Fielding of Advanced Analytics & Disconnected, Intermittent, Low-Bandwidth (DIL)
- Solutions Framework for Data Exploitation

MSS Portfolio:

- Integrated Survey Program
- SOF Planning, Rehearsal, and Execution Preparation
- DCGS-SOF Enterprise/All Source Information Fusion
- DCGS-SOF Geospatial Intelligence Processing, Exploitation, & Dissemination
- DCGS-SOF Signal Intelligence Processing, Exploitation, & Dissemination
- Mission Command

ACQUISITION STRATEGY

- Partner with National Mission Forces, IC community, Services, SOF C4, and Industry Partners
- Agile software development

PERIOD OF PERFORMANCE

- Multi year support contracts
- HW QRC deliveries in 14 to 90 Days

MILESTONES

- Periodic program reviews
- Technology insertions to field emerging capabilities

OPPORTUNITIES

- TILO@SOCOM.mil, 813-826-9482
- Foreign Comparative Test (FCT)
- Small Business Innovation Research
- SRSE BAA, Technical Experimentation

FUNDING

<u>APPROP</u>	<u>FY19</u>	<u>FY20</u>
• O&M	\$48.95M	\$61.81M
• PROC	\$20.98M	\$13.35M
• RDT&E	\$10.07M	\$ 7.05M

CURRENT CONTRACT/OEM

- Multiple: HW, SW, Technology
- Technical Management Support
- Rapid Prototyping
- 3D Database Production
- 3D HPC & Data Center

Integrated Survey Program (ISP)



Description:

- Conducts Technical Surveys to Provide Detailed Tactical Planning Data for Contingency Planning and Crisis Response
- Surveys U.S. facilities and other U.S. interests abroad
- Expanding Mission Set includes Vessels and Aircraft
- CJCS CONPLAN support to Special Operations Forces

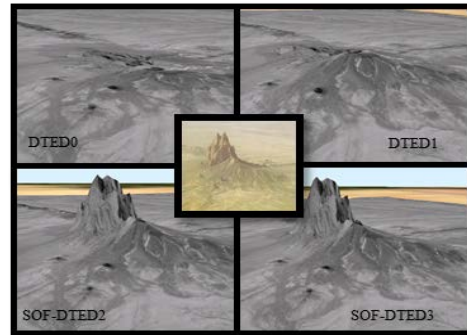
Operational Mission:

- Field Survey Collection and Production
- Dissemination to Garrison and Deployed SOF, DOD/IC, and Interagency
- Data Sharing with Coalition Partners

Innovation Areas:

- Distributed Data Management for Collection and Synching of Near Real Time Survey Data
- Mobile Technologies for Collection in Disadvantaged, Intermittent and Low Bandwidth Environments
- Cloud-enabled Mobile Application for User Generated Content
- Emerging Standards for 3D Geospatial Data to support Joint SOF Interoperability with Conventional and Coalition Forces

SOF Planning, Rehearsal, & Execution Preparation (SOFPREP)



Description:

- Produces Enhanced GEOINT (maps, imagery, and terrain data) and 3D Scene Visualization Databases
- Manages SOCOM's most comprehensive repository of SOF-common geospatial data
- Database support for Component simulators, JTAC Training Rehearsal Systems, Mission Planning, Virtual Mission Rehearsal, Gaming Engines, and 3D Globes

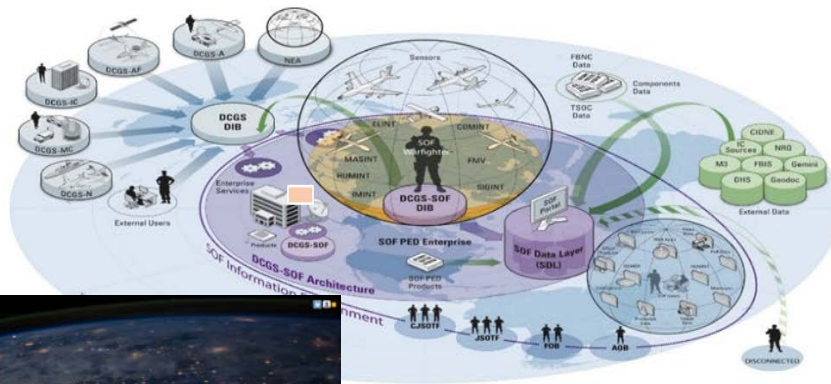
Operational Mission:

- Garrison system for Geospatial-Intelligence Data Processing, Exploitation, and Dissemination
- Operational Intelligence support for Mission Rehearsal and Planning

Innovation Areas:

- AI/ML to Automate 3D Feature Extraction and Data Correlation
- Rapid, Iterative Prototyping of Emerging Technologies for 3D Geospatial Database Generation
- Emerging Capability Technology Development for SOF-to-Service Transition of OGC CDB to enable a new National Capability
- Emerging Standards for 3D Geospatial Data to support Joint SOF Interoperability with Conventional and Coalition Forces

DCGS SOF Enterprise/All Source Information Fusion (ENT/ASIF)



Description:

- The Enterprise provides infrastructure and processing capability to allow for worldwide SOF intelligence information sharing
- All Source Information Fusion provides web-based advanced analytical intelligence tools via global cloud services and a disconnected architecture

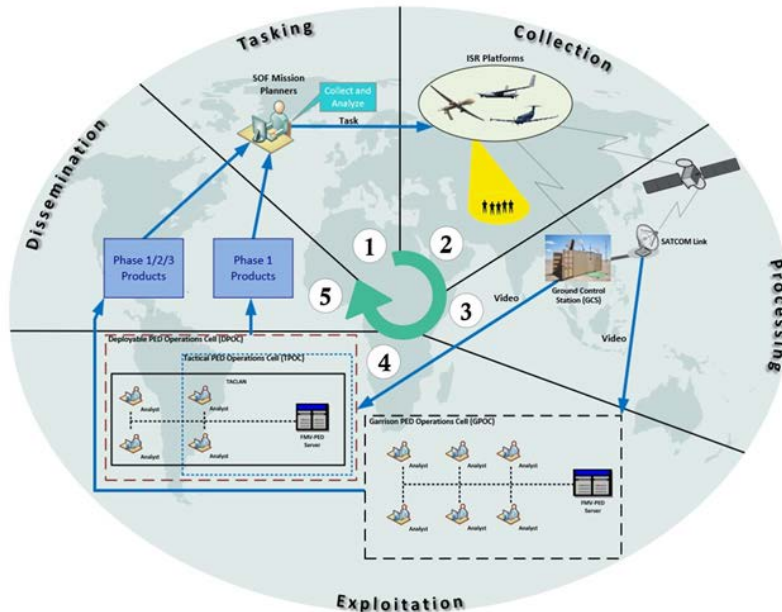
Operational Mission:

- Part of a family of systems providing Intelligence, Surveillance, and Reconnaissance (ISR) Processing, Exploitation, and Dissemination (PED) and analytical capabilities at the Joint Task Force level and below
- Interconnect the warfighter and sensors to find and fix High Value Targets of Interest
- Provide a network-enabled interoperable construct allowing continual unimpeded sharing of intelligence data, information, and services

Innovation Areas:

- AI/ML collaborative development with IC, DoD and commercial partners to improve data analysis and PED
- Work in partnership with IC, DoD and commercial partners on an NSA approved Cross-Domain Solution that facilitates bi-directional search and discovery
- Next generation Natural Language Processor (NLP) utilizing AI/ML

SOF Geospatial Intelligence Processing, Exploitation, & Dissemination (SGIP)



Description:

- SOF Imagery PED supports a collaborative and coordinated process for the SOF ISR cycle functions that include planning, direction, processing, exploitation, analysis, production, dissemination, and integration of intelligence data and intelligence products
- Garrison, Deployable and Tactical requirements

Operational Mission:

- Intelligence processing of collected data from various manned and unmanned ISR platforms and sensors
- Near-real-time find-fix-finish-exploit-analyze (F3EA) intelligence operations on a 24/7/365 basis at all levels of warfare (Strategic, Operational, Tactical)

Innovation Areas:

- Tactical Cross Domain Solution
- AI/ML tools and applications that support FMV Analysts such as object detection/tracking, coordinate generation
- Disconnected, Intermittent, Low-Bandwidth (DIL) capabilities
- Sys Admin Support Contract Re-compete FY21

Signal Intelligence Processing, Exploitation, and Dissemination (SIGINT PED)



Description:

- Provides SIGINT exploitation capability in both garrison and deployable environments
- USSOCM SIGINT PED has fielded garrison workstations and deployable nodes

Operational Mission:

- Provides SOF SIGINT elements a robust, organic, scalable capability for garrison and tactical SIGINT Processing, Exploitation, and Dissemination
- Interconnect the warfighter and tools to enable a network-based targeting process

Innovation Areas:

- Capability to leverage existing ISPs in urban areas
- Do more with less - push more data through smaller pipe(s)
- Choose your own constellation (SATCOM)
- SWAP and power independence
- Remote alerting

Capability Insertion Opportunities

- **Integration and Fielding of Advanced Analytics**
- **Solutions Framework for OUSD(I) Common Data Fabric**
- **Automation and Analysis, Incorporate Machine Learning and Artificial Intelligence Capabilities**
- **Human Language Technology**
- **Cross-Domain Solution**
- **Portability / Disconnected Operations Optimization**
- **Partner with Academia, National Labs, and OGA on Technology Insertion Points**