



SPECIAL OPERATIONS FORCES INDUSTRY CONFERENCE

Accelerating SOF Innovation

COL Donald Wols *Director of Logistics, J4*

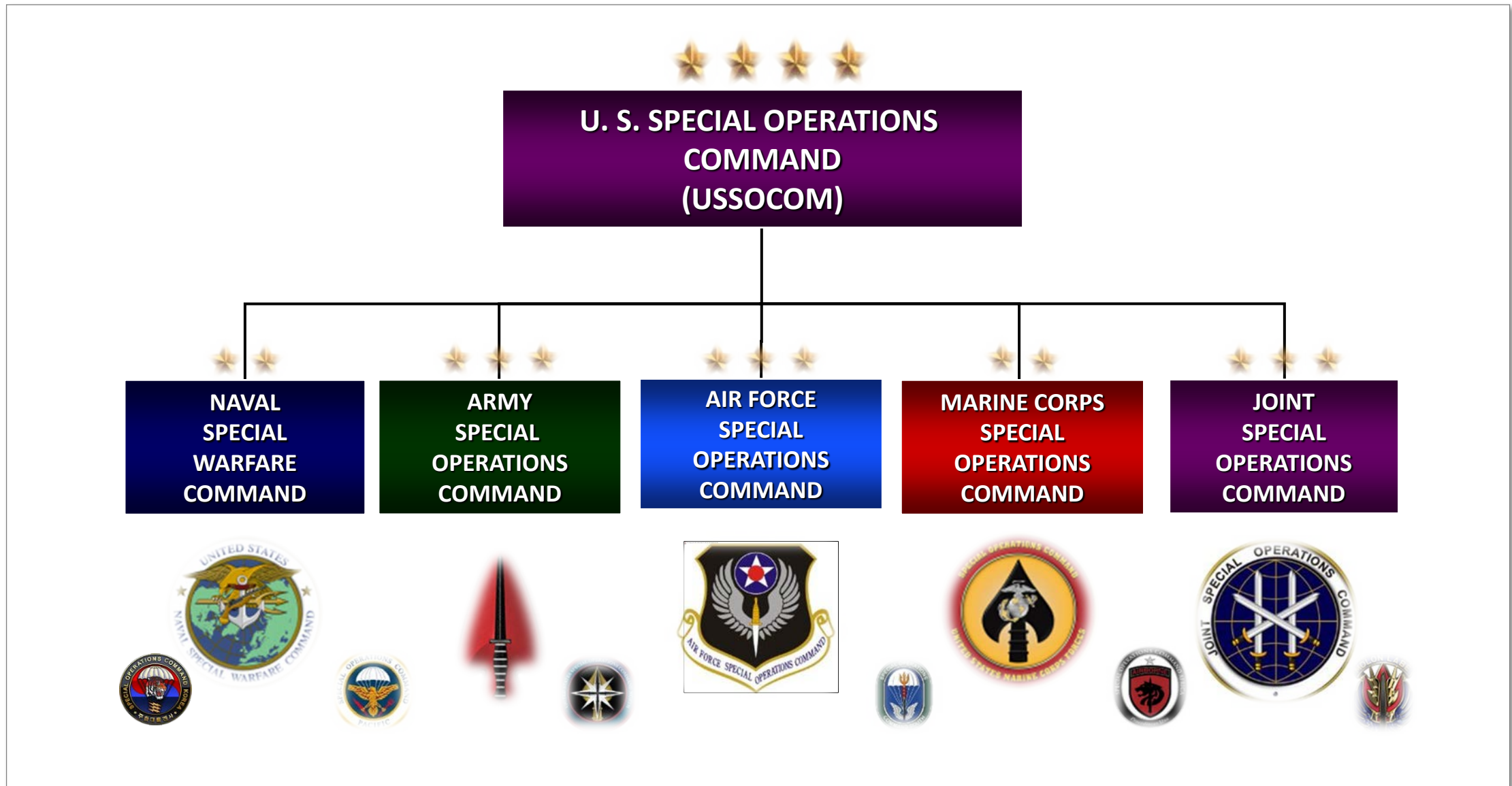
SUSTAINING THE SOF WARRIOR IN A DYNAMIC OPERATIONAL ENVIRONMENT



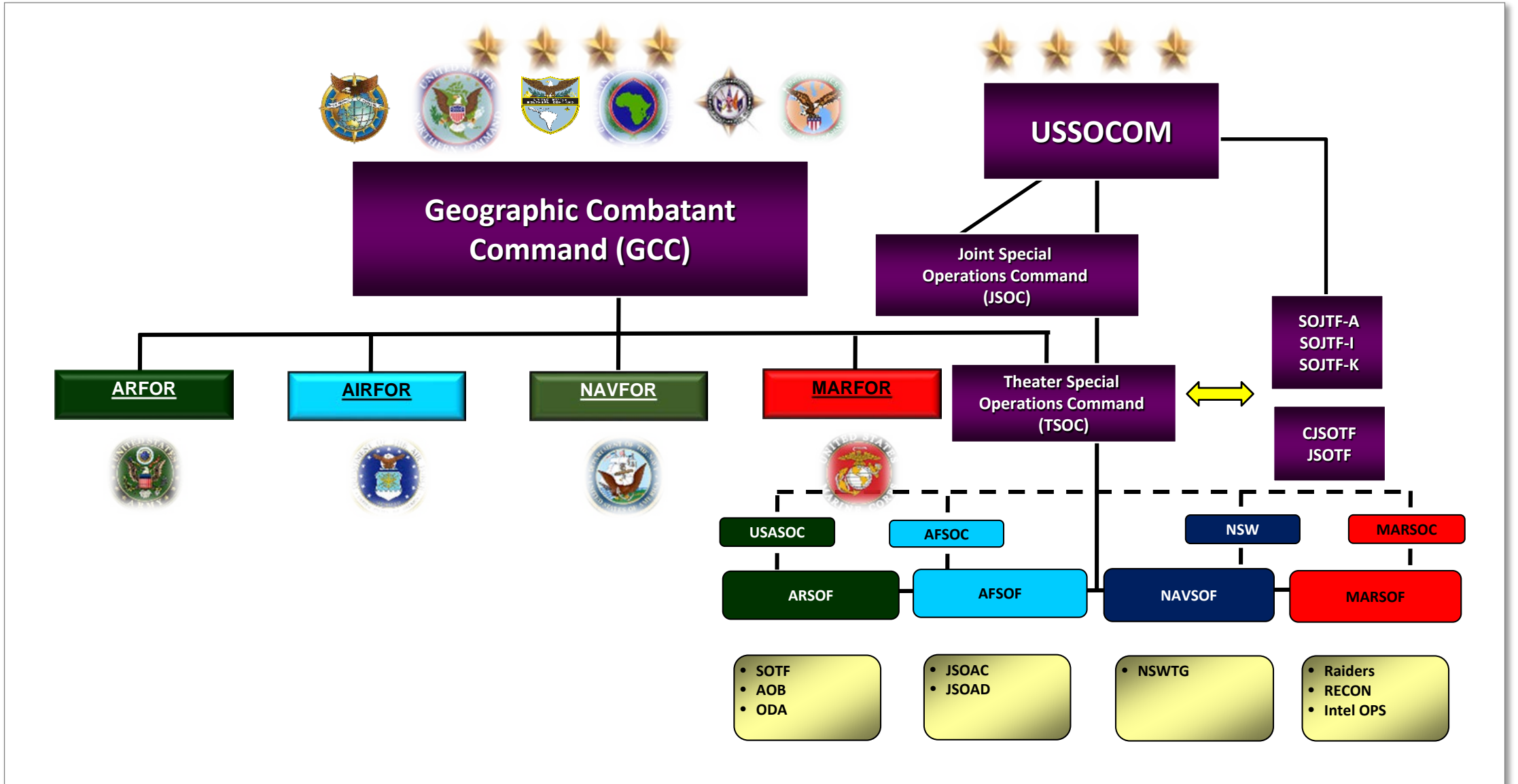
Agenda

- **USSOCOM and J4 organization**
- **Global SOF Support to Global Threats**
- **SOF Logistics overview**
- **GLO**
- **Questions**

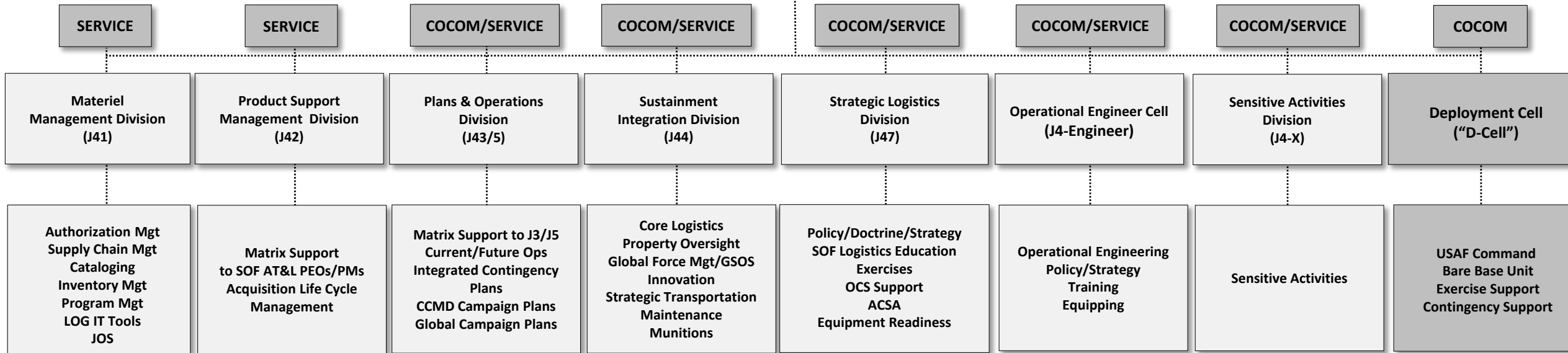
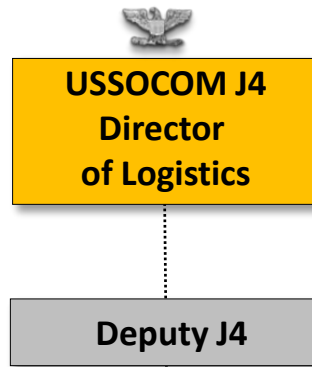
Command Relationships



Command C2 Organization



Directorate of Logistics



J4 Logistics Mission

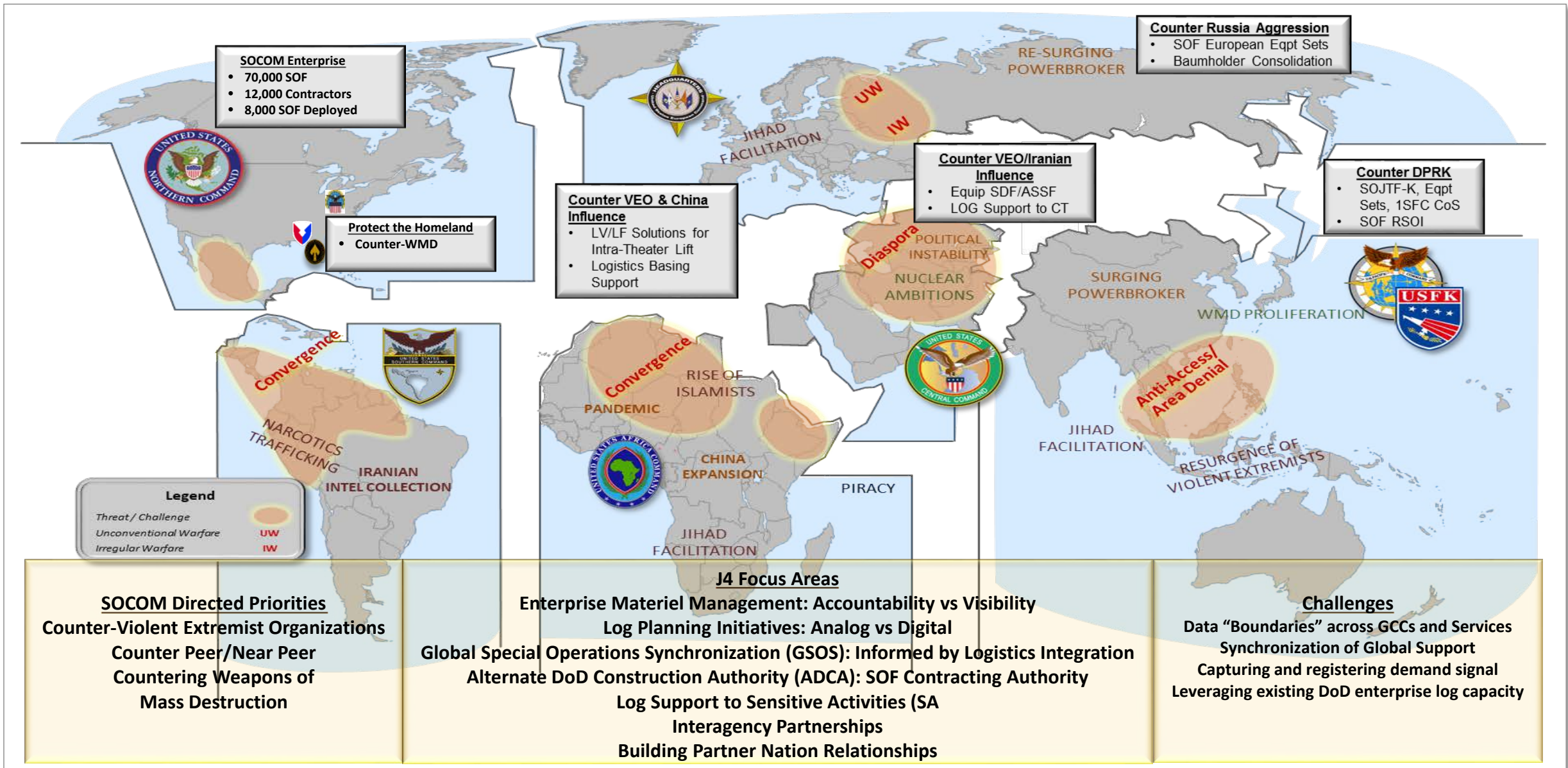
Shape and set conditions for logistics and materiel solutions to sustain global SOF operations.



SOF Truths

1. Humans are more important than Hardware
2. Quality is better than Quantity
3. Special Operations Forces cannot be mass produced
4. Competent Special Operations Forces cannot be created after emergencies occur
- 5. *Most Special Operations require non-SOF assistance***

Global SOF Logistics Support



Logistics in Support of SOF

DOD Joint Logistics Enterprise Strategic Partners



- Joint Staff
- Services
- DLA
- USTRANSCOM
- AMC
- Industry
- US Corps of Engineers



Theater Executive Agent/Lead Component



- OCS
- BOS
- MILCON
- Engineers
- Intra-theater Lift



- Service Provided Combat Service Support (CSS)
- Inter-agency (Title 22)
- Coalition
- Host Nation

Funding Authorities

MFP-2 = Service provided
MFP-11 = SO peculiar

Classes of Supply

- Class I
 - Subsistence
 - Fresh potable water
- Class II
- Class III
 - Fuel, oil, lubricants
- Class IV
 - Construction Material
- Class V
 - Ammunition
- Class VI
 - Personal demand items
- Class VIII
 - Medical materiel
- Class IX
 - Repair parts

Contracting Services

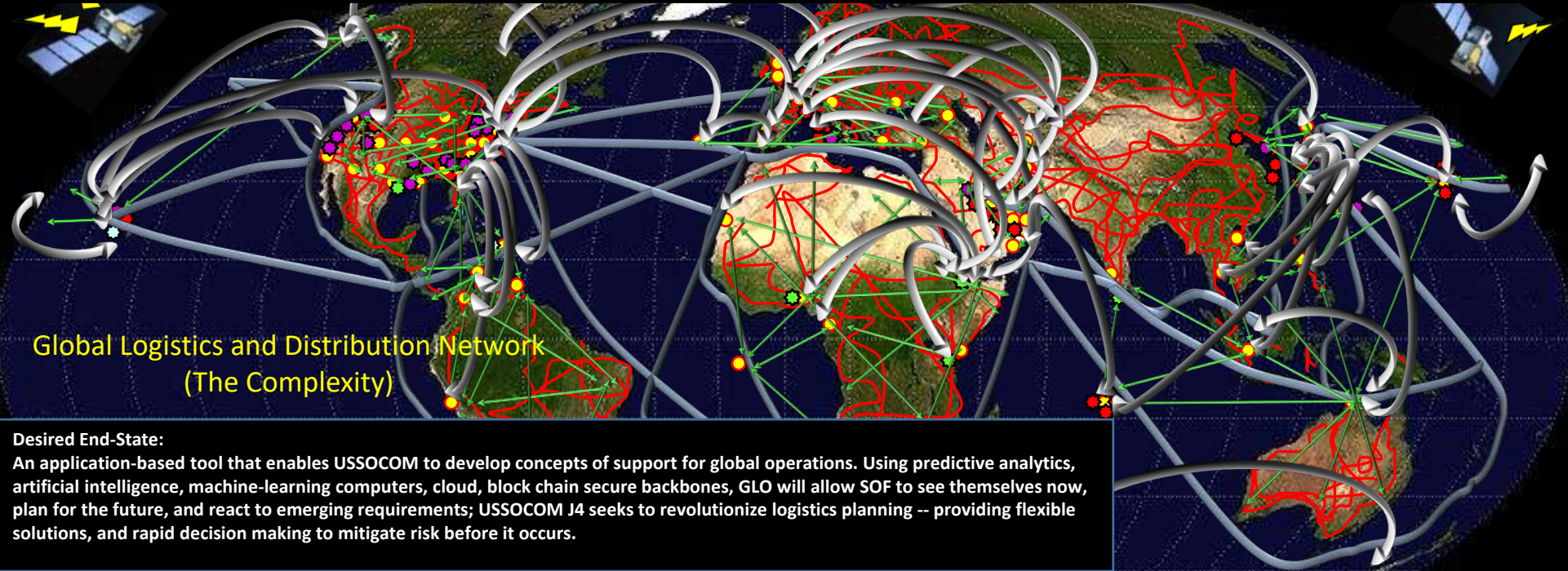
- Electrical power
- Trash removal
- Telephone services
- Heavy equipment
- Interpreters
- Shower services
- Billeting services
- Latrine services
- Vehicle rentals

5th SOF Truth: Most Special Operations Require Non-SOF Assistance.

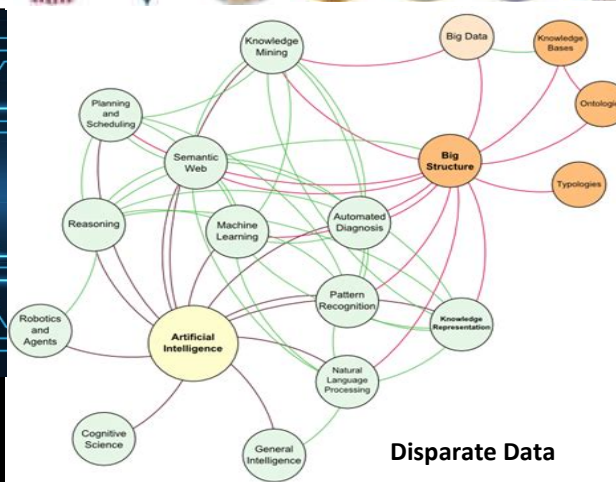


Global Logistics Overview (GLO)

Changing The Logistics Paradigm through A.I. and Machine Learning



Must (Transform) to Sustain SOF, Proactive, Predictive, and Reliable Logistics



Questions?

