

DATASIM

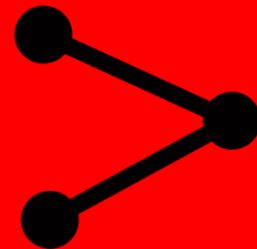
Total Learning Architecture

Shelly Blake-Plock • Alpha 2020

 Yet Analytics

What are we trying to do?

Open Source
Specs



Simulated
xAPI Data

Open Source
App

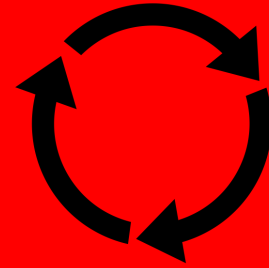
Created by throwaway icons
from Noun Project



What's the purpose?

Simulate and
Generate xAPI

Evaluate the
Implementation



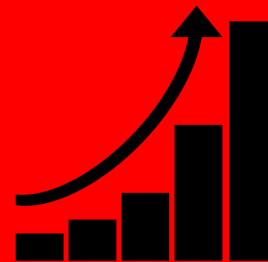
Benchmark and
Stress Test TLA

Created by Lloyd Humphreys
from Noun Project



Why are we doing this?

Access to Testable
Big xAPI Data



Created by Catherine Veronica Drotar
from Noun Project

Will Inform DoD
Learning & Training
Modernization Policy



What is the problem?

A Missing Link for
xAPI Adoption



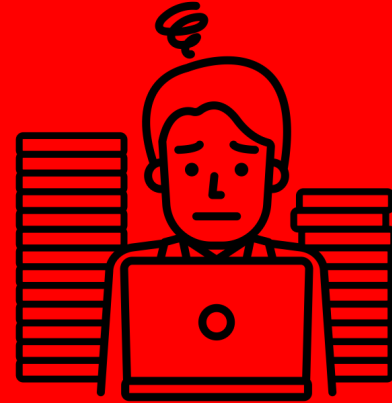
Created by creative outlet
from Noun Project

Lack of Exemplar
Testing and Evaluation
Datasets



How is it done today?

Labor Intensive and
High Cost



From Live
Events

Or Created
by Hand

Created by Lisole
from Noun Project

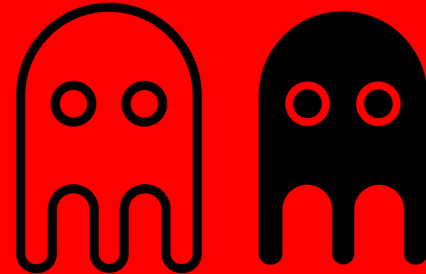
Human Error and
Lack of Scale



What is new in our approach?

Learner Personae

Digital
Twins



Sim
Modding

Created by Shastry
from Noun Project

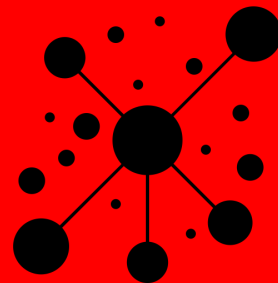
Non Player
Characters (NPCs)



What's our solution?

DATASIM
Data and Training Analytics
Simulated Input Modeler

TLA
Testing



Big xAPI
Data

Created by Wenjie Jiang
from Noun Project

xAPI Profiles and
Analytics



How does it work?

State of DATASIM:
Alpha 2020



IMPORT

EXPORT



RUN

Profiles

IMPORT

EXPORT



1

Personae

IMPORT

EXPORT



1

Alignments

IMPORT

EXPORT



1

Parameters

IMPORT

EXPORT



1



IMPORT

EXPORT



RUN

Profiles

IMPORT

EXPORT



```
1 [{"versions":[{"id":"https://w3id.org/xapi/cm5/v1.0","generatedAtTime":"2017-03-27T12:30:00-07:00","wasRevisionOf":["https://w3id.org/xapi/cm5/context/categories/cm5"]}],["@context":"https://w3id.org/xapi/profiles/context","author":{"type":"Organization","name":"cm5 Working Group"},"concepts":[{"id":"https://w3id.org/xapi/adl/verbs/abandoned","inScheme":"https://w3id.org/xapi/cm5/v1.0","type":"Verb","definition":{"en":"Indicates that the AU session was abnormally terminated by a learner's action (or due to a system failure)."},"prefLabel":{"en":"abandoned"}}, {"id":"https://w3id.org/xapi/adl/verbs/satisfied","inScheme":"https://w3id.org/xapi/cm5/v1.0","type":"Verb","definition":{"en":"Indicates that the authority or activity provider determined the actor has fulfilled the criteria of the object or activity."},"prefLabel":{"en":"satisfied"}}, {"id":"https://w3id.org/xapi/adl/verbs/waived","inScheme":"https://w3id.org/xapi/cm5/v1.0","type":"Verb","definition":{"en":"Indicates that the learning activity requirements were met by means other than completing the activity. A waived statement is used to indicate that the activity may be skipped by the actor."},"prefLabel":{"en":"waived"}}, {"id":"https://w3id.org/xapi/cm5/activities/block","inScheme":"https://w3id.org/xapi/cm5/v1.0","type":"
```

Personae

IMPORT

EXPORT



```
1 [{"member":[{"name":"Bob Fakename","mbox":"mailto:bob@example.org"}, {"name":"Alice Faux","mbox":"mailto:alice@example.org"}, {"name":"Fred Ersatz","mbox":"mailto:fred@example.org"}], {"objectType":"Group","name":"trainees"}]
```

Alignments

IMPORT

EXPORT



```
1 [{"mbox":"mailto:bob@example.org":{"https://example.org/activity/a":0.5,"https://example.org/activity/c":-0.2},"mbox":"mailto:alice@example.org":{"https://example.org/activity/c":0.7,"https://example.org/activity/d":-0.02}}
```

Parameters

IMPORT

EXPORT



```
1 [{"start":"2019-11-18T11:38:39.219768Z","end":"2019-11-19T11:38:39.219768Z","timezone":"America/New_York","seed":42,"from":"2019-11-18T11:38:39.219768Z"}]
```



IMPORT

EXPORT



RUN

Personae

PROFILES

ALIGNMENTS

PARAMETERS

IMPORT

EXPORT



```
1 {"member":[{"name":"Bob Fakename","mbox":"mailto:bob@example.org"},{"name":"Alice Faux","mbox":"mailto:alice@example.org"},{"name":"Fred Ersatz","mbox":"mailto:fred@example.org"}],"objectType":"Group","name":"trainees"}
```



IMPORT

EXPORT



RUN

Run Options

LRS Endpoint



API Key

API Secret Key

 Send Statements to LRS

Profiles

IMPORT

EXPORT



```
1 {"start":"2019-11-18T11:38:39.219768Z","end":"2019-11-19T11:38:39.219768Z","timezone":"America/New_York","seed":42,"from":"2019-11-18T11:38:39.219768Z"}
```

Personae

IMPORT

EXPORT



```
1 {"member":[{"name":"Bob Fakename","mbox":"mailto:bob@example.org"}, {"name":"Alice Faux","mbox":"mailto:alice@example.org"}, {"name":"Fred Ersatz","mbox":"mailto:fred@example.org"}], "objectType":"Group", "name":"trainees"}
```

Alignments

IMPORT

EXPORT



```
1 {"mbox::mailto:bob@example.org": {"https://example.org/activity/a":0.5,"https://example.org/activity/c":-0.2}, "mbox::mailto:alice@example.org":{"https://example.org/activity/c":0.7,"https://example.org/activity/d":-0.02}}
```

Parameters

IMPORT

EXPORT



```
1 {"start":"2019-11-18T11:38:39.219768Z","end":"2019-11-19T11:38:39.219768Z","timezone":"America/New_York","seed":42,"from":"2019-11-18T11:38:39.219768Z"}
```

Technology

- Alpha can generate 500,000+ xAPI statements per minute on commodity hardware
- All statements are aligned to xAPI Profiles
- All statements will conform to the behavior model established by the analyst (the NPC model)
- Simulations can be team-based to test data design serving group activity
- Individual simulations can be run in duplication for testing purposes
- For access to the recorded ADL TLA Working Group webinar on DATASIM, see: <https://www.yetanalytics.com/research>



Who cares?

DoD Learning and
Training IT Stakeholders

Increase
Assurance



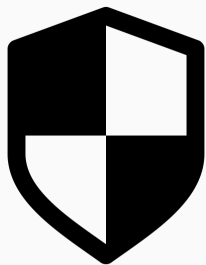
Increase
Innovation

Created by projecthayat
from Noun Project

Increase Speed and
Agility



DATASIM mitigates against...



Created by Kimmi Studio
from Noun Project

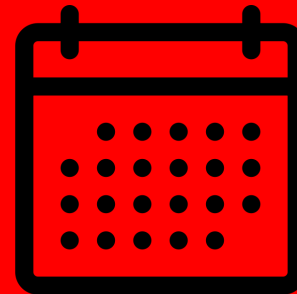
- **Cost** — by allowing ad hoc and repeatable data sets
- **Time** needed to identify risks and problems in existing and developing software and applications across the TLA
- **Efficiency** risks of manual simulated data design, including the “meaninglessness” problems of automated simulated data



How long will it take?

Phases

Alpha
2020



Beta
2021

Created by + Shmidl Sergey +
from Noun Project

TRL 6
2022



Thank you.

Shelly Blake-Plock

shelly@yetanalytics.com

[@blakeplock](#)

DATASIM is funded in partnership with the
Advanced Distributed Learning Initiative at DoD

