



EXPANDING THE COMPETITIVE SPACE

SPECIAL OPERATIONS FORCES INDUSTRY CONFERENCE

Mr. Jim Smith, Acquisition Executive

SOF AT&L





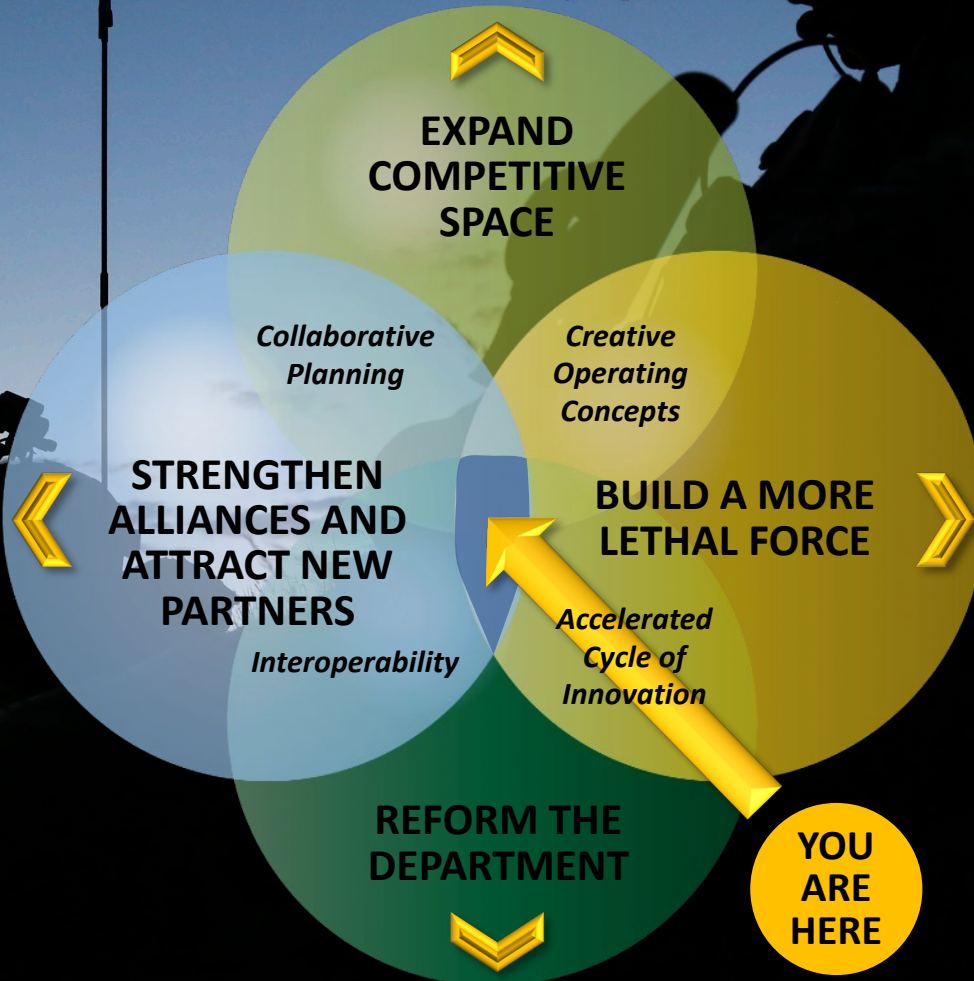
THANK YOU



THE NATIONAL DEFENSE STRATEGY: WHY WE'RE HERE

Generate U.S. Advantage and Dissuade/Prevent/Deter Adversaries

Robust Networks



Military Advantage

YOU ARE HERE

Greater Performance and Affordability

BUILD A **MORE LETHAL** FORCE

Military Advantage

NEXT GENERATION ISR

Find, Fix, Exploit and Analyze...

Faster and Improved Accuracy

All Domains—Air, Space, Maritime, Ground, and Cyber

Processing and Exploitation at the Edge

Access to Non-permissive Environments

Responsive Space-Based Capabilities

Small Unmanned Air/Ground/Maritime Systems

Sensor Fusion

PEO Special Reconnaissance
Tues 5/12: 1205-1305

NEXT GENERATION MOBILITY

Terrain Following/Terrain Avoidance Radar

Radio Frequency Countermeasures

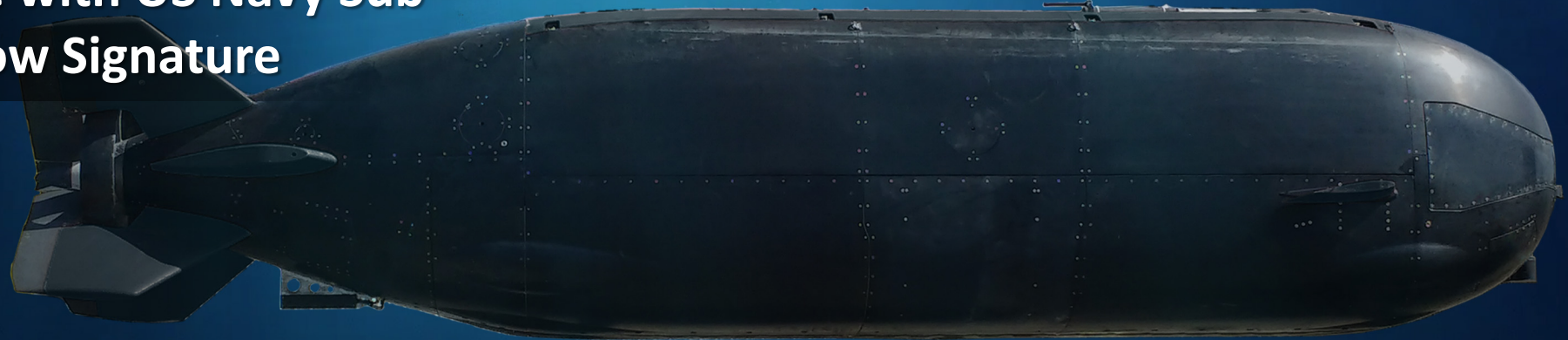
Dry Combat Submersible

Combatant Craft

Next Gen Dry Combat Submersible

Interoperable with US Navy Sub

Access and Low Signature



PEO Fixed Wing: Wed 5/13: 0930-1030
PEO Maritime: Wed 5/13: 1530-1630
PEO Rotary Wing: Wed 5/13: 1415-1515
PEO SOF Warrior: Wed 5/13: 1045-1145
Science and Technology: Tues 5/12: 1050-1150

PRECISION FIRES AND EFFECTS

Armed Overwatch
Multi-launch Platform
(Air, Maritime, Land—
Vehicles and Man Portable)

Loitering Munitions

Increased Ranges

Precision Strike

Low Collateral/Call off Target

Counter Improvised Explosive Device

Counter Unmanned Aerial System

BIOTECHNOLOGY

Human Systems Integration
Enhanced Performance, Rest, and Recovery
Wearable Physiological Monitoring Systems
Austere Life-saving Equipment
Improved Cognition and Decision Making

● PEO SOF Warrior
Wed 5/13: 1045-1145
Science and Technology
Tues 5/12: 1050-1150

HYPER ENABLED OPERATOR

An operator whose decision making is assisted by data analytics at the edge, resulting in cognitive overmatch

Computing at the Edge

Connectivity Anywhere with Anyone

Embedded Multimodal Data Discovery

Machine-assisted Decision Making

Automatically **Discover, Know,**

****Anticipate, Collaborate****

Supported by an Architecture

(Data, Application, Presentation,****

****Communication**) Optimized for the**

Operator Environment

HYPER ENABLED OPERATOR IN PARTNERED OPERATIONS

Realtime Situational Awareness

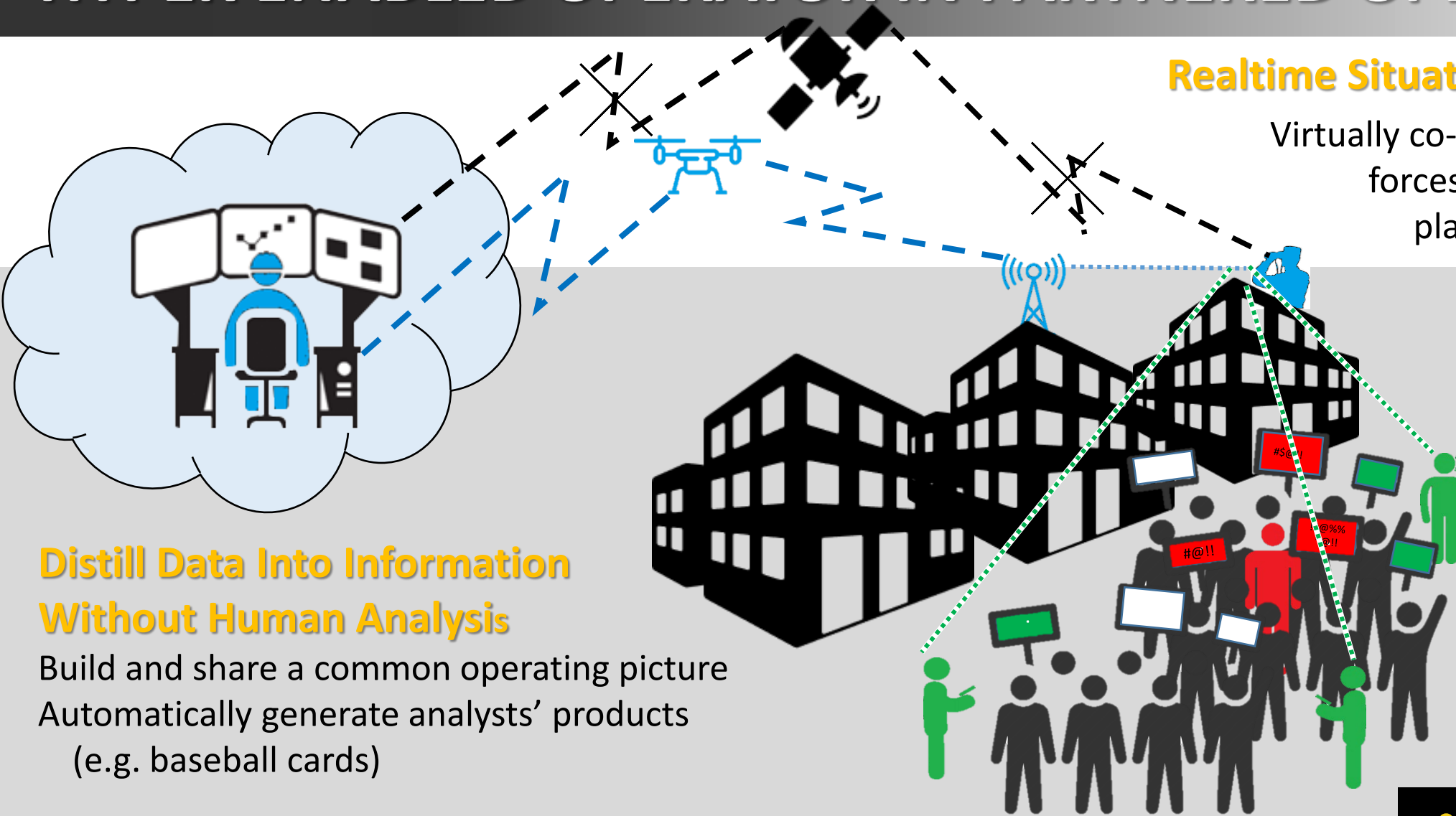
Virtually co-located with partner forces throughout mission planning and execution

Communicate Without an Interpreter

Real-time, two-way translation that accounts for local dialects and idioms, disconnected from the cloud

Distill Data Into Information Without Human Analysis

Build and share a common operating picture
Automatically generate analysts' products
(e.g. baseball cards)



DATA AND NETWORKS

Mission Command:

- Enable Effective SOF **Command and Control**
- Suite of Tools, Systems, Applications, Data Sources and Standards **Interoperable** Across the SOF Environment
- Common Operating Picture will allow Globally Collaborative C2 and Fuse SOF Joint Function Activities into a **Single** Visualization

READY EQUIPMENT

**SOF Support Activity
Global Logistics Support Services (GLSS)**

- Rapid Prototyping
- Production/Integration
- Manufacturing
- Warehousing
- Set Aside for Small Business



PM Expeditionary Support
Innovative Solutions
Distributed to Point of Need
Resilient and Agile



PEO SOF Support Activity
Wed 5/13: 1645-1745

READY FORCE

Preservation of the Force and Family (POTFF)
Joint Special Operations University (JSOU)
Care Coalition
Language, Regional Expertise and
Cultural (LREC) Training Services
Knowledge Services
Research and Development
Medical
Facilities

PEO Services
Thurs 5/14: 1345-1445

STRENGTHEN ALLIANCES AND ATTRACT NEW PARTNERS



PARTNERED OPERATIONS



**Affordable
Sustainable
Proliferable
Interoperable**

REFORM THE DEPARTMENT

Greater Performance and Affordability

OUR RELATIONSHIP IN THE INFORMATION ERA



REQUIREMENTS

We've asked you for Hardware-defined, Software-enabled.
We'll start asking for **Software-defined, Hardware-enabled**
– *the emphasis matters.*



DATA

You'll see an increased emphasis on data. What data is generated?
Who owns it? How accessible is it? (Hint: A lot. I need to. Very...to me.)



PROGRAM PROTECTION

Security Management Supply Chain, **Cybersecurity Maturity Model Certification**




AI/ML/DATA ANALYTICS

We're told **AI/ML** is "shovel ready" now. Where can we inject AI/ML into existing Programs of Record to improve Operator capability?

REORGANIZATION TO ORIENT ON NDS

SOF AT&L ORGANIZATIONAL CHANGES




PEO ROTARY WING
Mr. Geoff Downer
Re-flagged to Ft. Eustis

.....● **MISSION STATEMENT**

Provide rapid and focused acquisition, research and development, and life-cycle logistics support to the operators of the US Army Special Operations Aviation Command and the 160th Special Operations Aviation Regiment, which provides SOF rotary-wing capability to the joint force.

Wednesday: 1415-1515




PEO SOF DIGITAL APPLICATIONS
COL Paul Weizer

.....● **MISSION STATEMENT**

Rapidly consolidate, integrate, acquire, and divest SOF unique software through the use of agile software development and deployment practices to enhance the full spectrum of SOF operations.

Tuesday: 1545-1645




PEO SPECIAL RECONNAISSANCE
Mr. David Breede

.....● **MISSION STATEMENT**

Lead the rapid and focused acquisition of state of the art sensors and associated C2, emplacement, recovery, and specialized communication systems across all domains to enable total situational awareness for the SOF Warfighter.


Tuesday: 1205-1305



PEO SPECIAL OPERATIONS FORCES SUPPORT ACTIVITY
COL Joseph Blanton

.....● **MISSION STATEMENT**

Enable Global SOF Operations through dedicated life cycle sustainment.



PM EXPEDITIONARY SUSTAINMENT
Mr. Jason Schroeder

.....● **MISSION STATEMENT**

Provide rapid, tailorable, operational support and capability development for logistics systems at Special Operations Forces' points of need.

Wednesday: 1645-1745

MIDDLE TIER ACQUISITIONS

Rapid Prototyping programs

Precision Strike System - Ground and Maritime
Mid-Range Gas Gun
Lightweight Machine Gun - Medium
Personal Defense Weapon System
Handgun Suppressor
Counter Small Unmanned Aerial Systems
Technical Surveillance Equipment Kit
Combat Diving - Navigation and Propulsion

Rapid Fielding programs

Combat Diving - Environmental Protection

- April 2018—OSD issued MTA interim guidance
- August 2019—MTAs to be the intended default for majority of USSOCOM acquisition efforts
- 11 MTAs to date
- USSOCOM programs are 16% of DoD MTAs

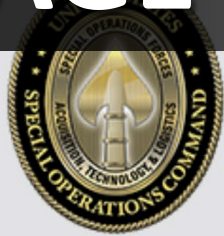


COMPETITIVE and COLLABORATIVE

225 TILO submissions
and 25 TILO briefings

Competed 65.6¢ of every \$1
Awarded 24.7% to Small Business
Awarded 10.3% to Small Disadvantaged
Awarded 8.02% to Women-owned
Awarded 8.59% to Service Disabled
Awarded 1.96% to HUBZone Firms
Exceeding ALL Small Business Goals

ENGAGE SOF (eSOF)



SUBMIT YOUR IDEA

SUBMISSION TITLE

COMPANY INFO

COMPANY

FIRST NAME - PRIMARY POINT OF CONTACT (POC)

LAST NAME - PRIMARY POINT OF CONTACT (POC)

PHONE NUMBER

MOBILE NUMBER

PRIMARY EMAIL ADDRESS

- One stop entry point for products, technology, and capabilities.
- Match your company's product/service/capability to the appropriate personnel within the command
- Schedule discussions or demonstrations if there is sufficient interest at the headquarters
- Public Link:
 - <https://www.socom.mil/SOF-ATL/Pages/submit-your-idea.aspx>

TRANSPARENT



[@SOAExec](http://www.socom.mil/SOF-ATL)



[Linkedin.com/in/ussocom-ae](https://www.linkedin.com/in/ussocom-ae)

SMALL BUSINESS HELP

Christopher Harrington

Christopher.Harrington@socom.mil

813.826.9475

SUBMITTING IDEAS

Shelvin Watts

eSOF@socom.mil

<https://www.socom.mil/SOF-ATL/Pages/submit-your-idea.aspx>

813.826.9482

VULCAN

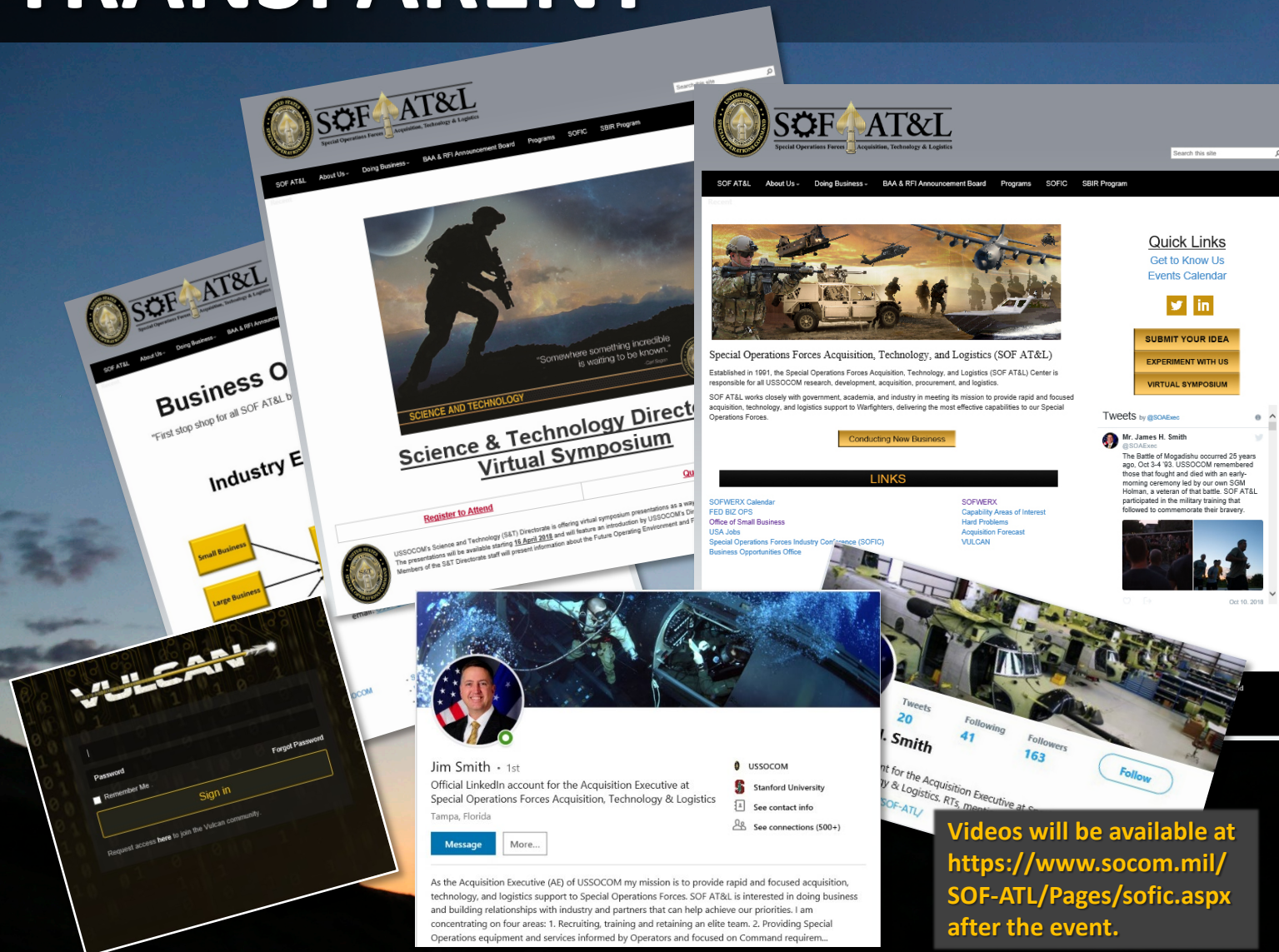
<https://www.Vulcan-SOF.com>

SOFWERX

<https://www.sofwerx.org>

EXPERIMENTATION IDEAS

<https://www.socom.mil/SOF-ATL/Pages/technical-experimentation.aspx>



Videos will be available at
<https://www.socom.mil/SOF-ATL/Pages/sofic.aspx>
 after the event.

NAVIGATING THE WEEK

TUESDAY

- 0930 – 0935
NDIA Intro
- 0935 – 1035
PEO C4 Overview/Q&A
- 1050 – 1150
S&T Overview/Q&A
- 1205 – 1305
Special Reconnaissance
Overview/Q&A
- 1330 – 1415
USSOCOM Commanding General
Keynote/Q&A
- 1430 – 1530
SOF AT&L Acquisition Executive
Keynote/Q&A
- 1545 – 1645
PEO SOF Digital Overview/Q&A
- 1700 – 1800
S&T Disruptive Technologies and
the Hyper Enabled Operator
- 1815 – 1845
PEO + S&T Media Roundtable

WEDNESDAY

- 0930 – 1030
PEO Fixed Wing Overview/Q&A
- 1045 – 1145
PEO SOF Warrior Overview/Q&A
- 1045 – 1145
AE Media Roundtable
- 1200 – 1300
Component Commander's Forum
(USASOC, AFSOC, NSW, MARSOC)
- 1335 – 1400
Business Roundtable (SOF AT&L AE,
Dir Procurement, SB Advisor)
- 1415 – 1515
PEO Rotary Wing Overview/Q&A
- 1530 – 1630
PEO Maritime Overview/Q&A
- 1645 – 1745
PEO SOFSA Expeditionary
Sustainment Overview/Q&A

THURSDAY

- 1000 – 1100
SOCOM J4 Overview/Q&A
- 1115 – 1215
SOCOM CIO Overview/Q&A
- 1230 – 1330
SOCOM User Community
Perspective/Q&A
- 1345 – 1445
PEO Services Overview/Q&A
- 1500 – 1600
Acquisition Agility
Directory Overview/Q&A
- 1000 – 1600: PEO 1v1

FRIDAY

- 0800 – 1200: PEO 1v1



THANK YOU

