



**DEFENSE
INNOVATION UNIT**

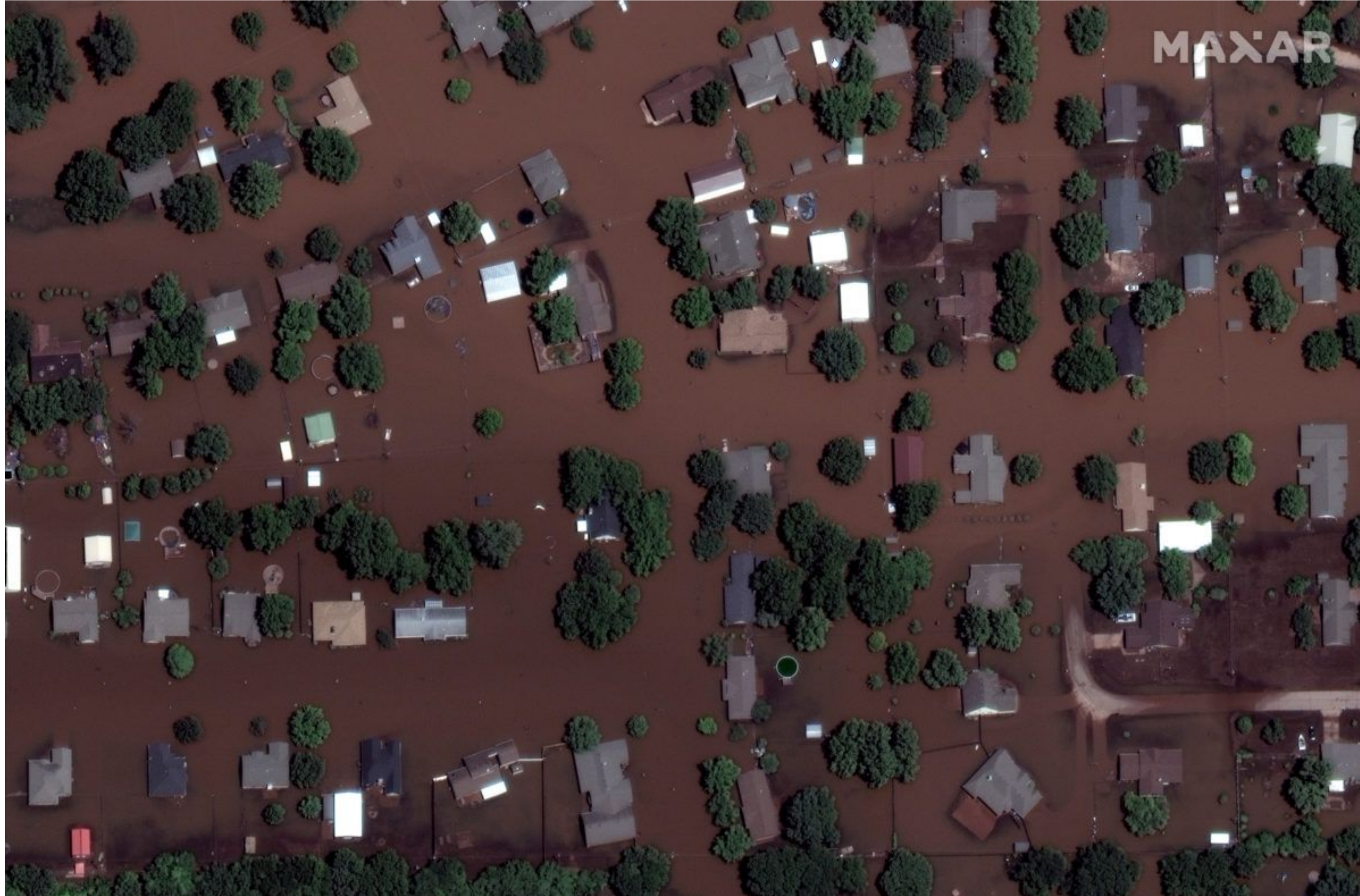
**xView Challenges
March 2021**

PANELISTS

- Bryce Goodman
Consultant, AI/ML Portfolio
Defense Innovation Unit
- Carol Smith
Sr. Research Scientist in HMI
Software Engineering Institute,
Carnegie Mellon University
- Aaron Reite, Ph.D.
Senior Staff Scientist
National Geospatial-Intelligence Agency
- Richard Marcum
R&D Scientist
National Geospatial-Intelligence Agency



BACKGROUND



xView 2



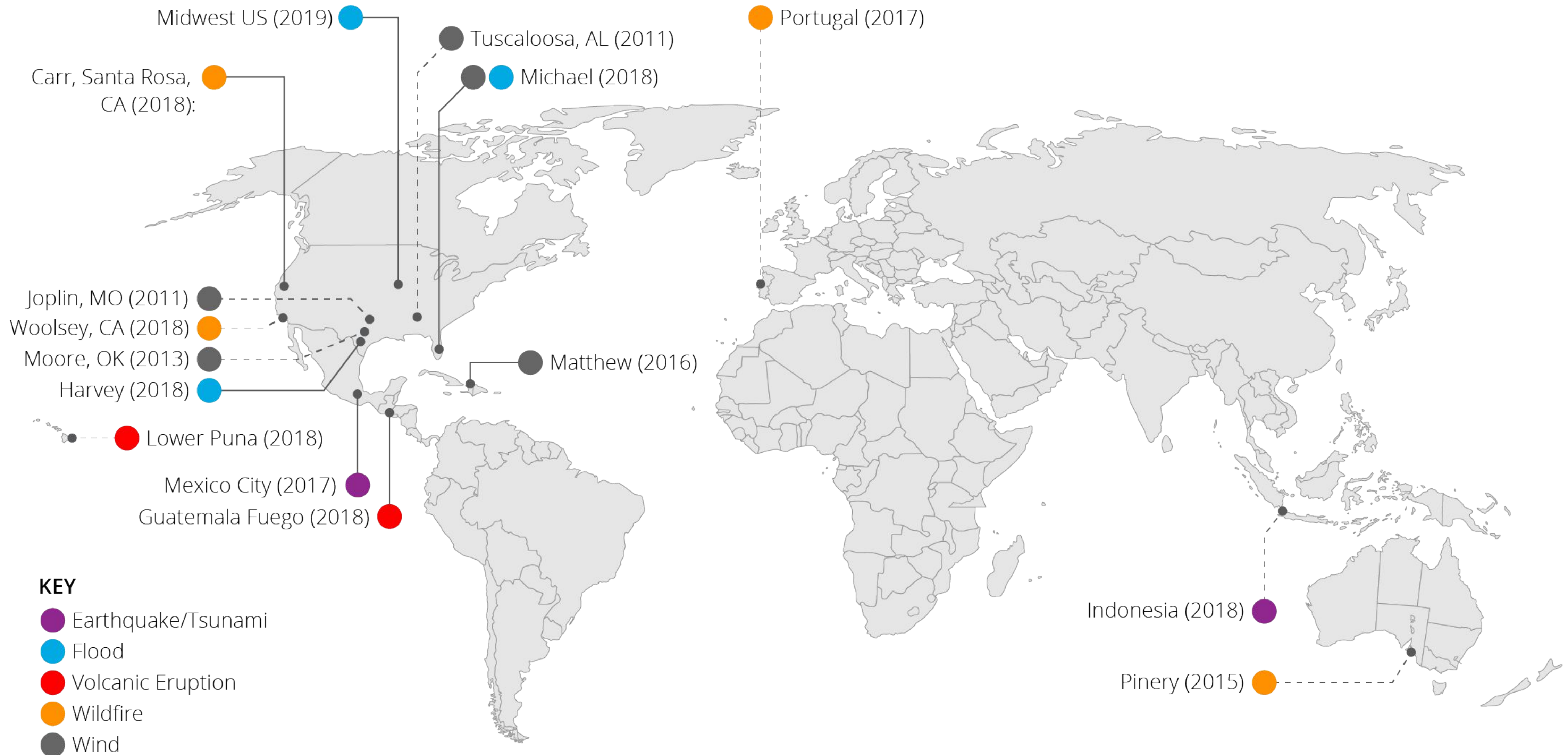
Analysis Agencies



FEMA



DIVERSITY OF LOCATIONS

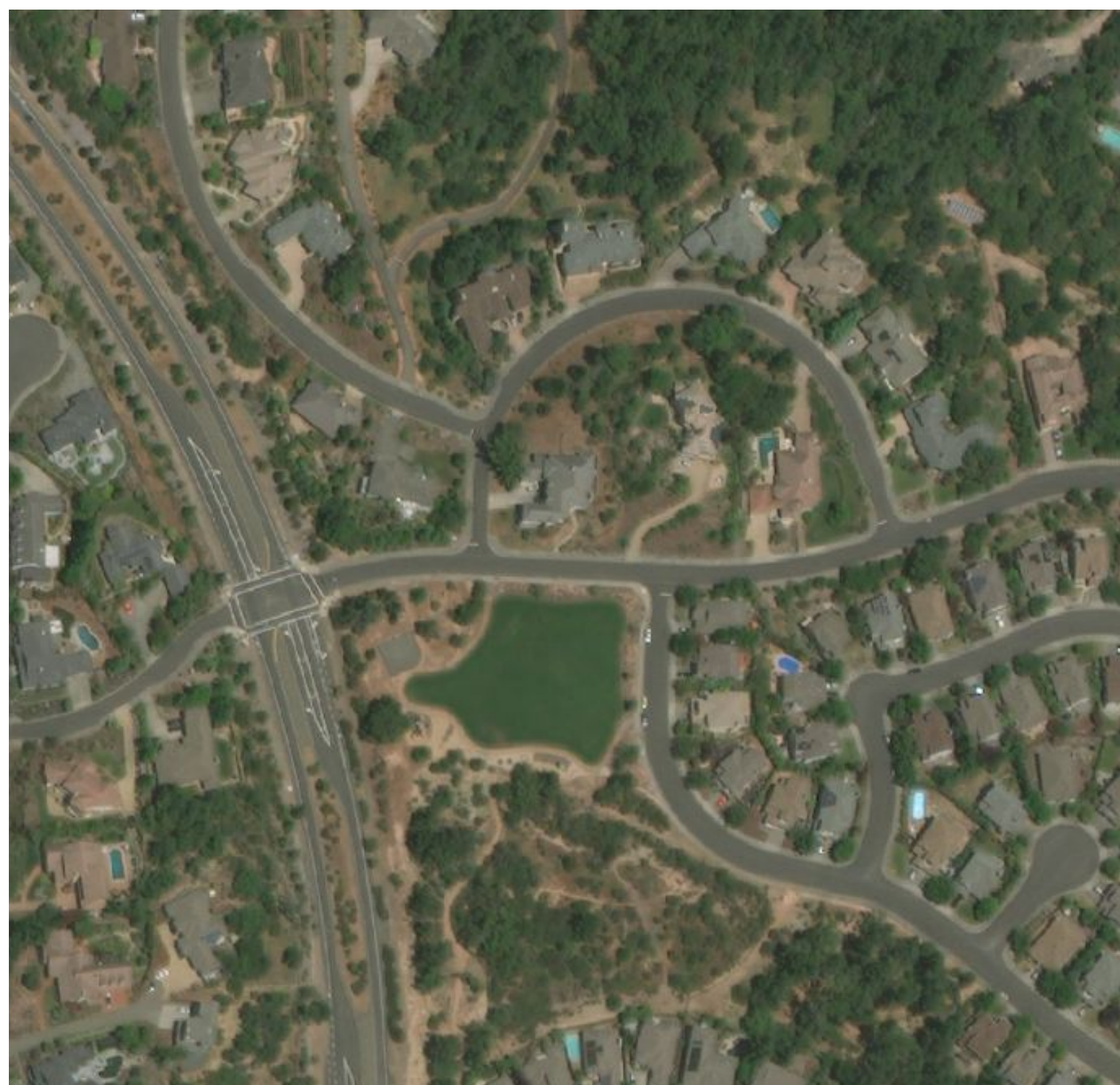


JOINT DAMAGE SCALE

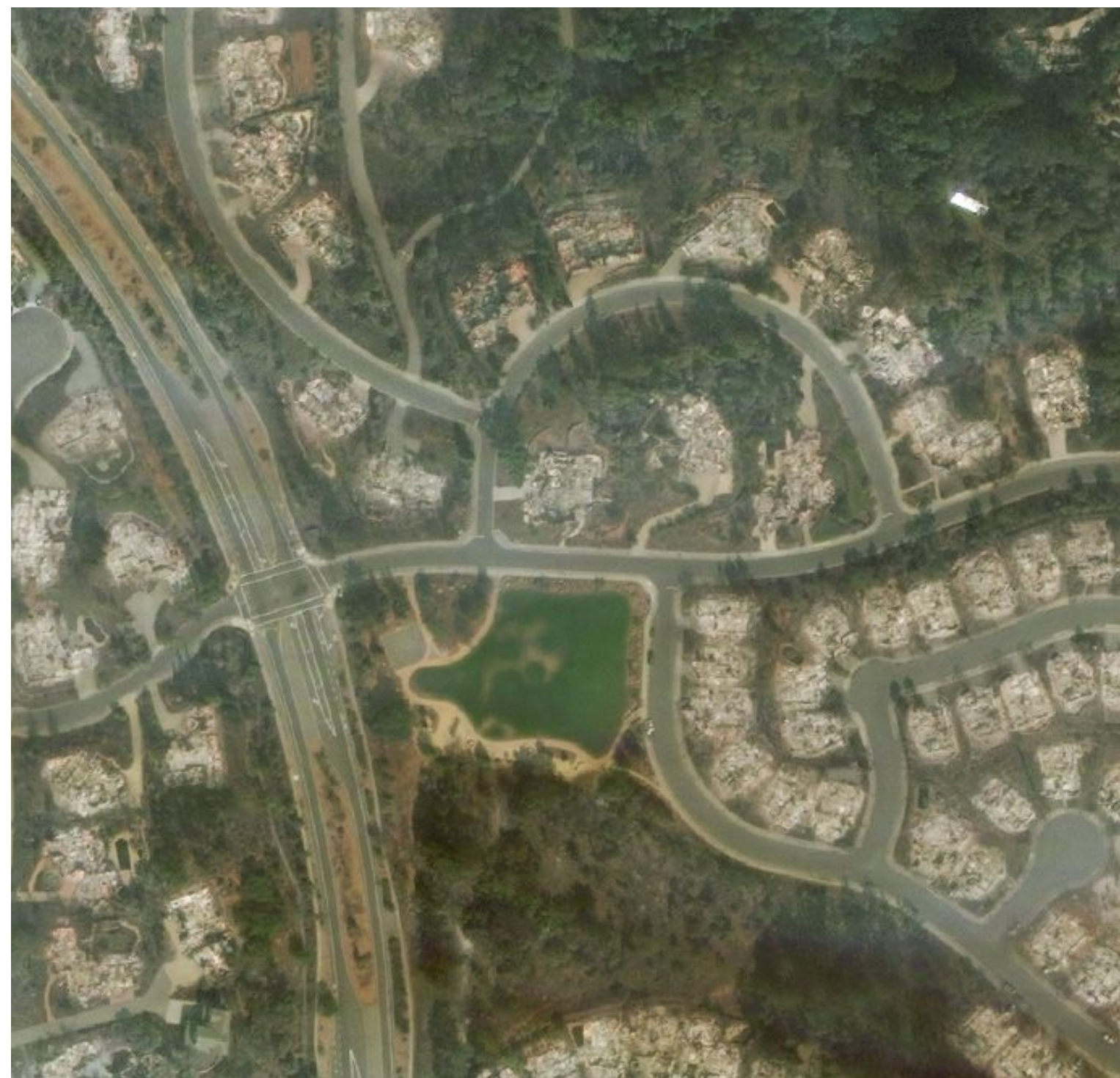
Disaster Level	Structure Description
0 (No Damage)	Undisturbed. No sign of water, structural or shingle damage, or burn marks.
1 (Minor Damage)	Building partially burnt, water surrounding structure, volcanic flow nearby, roof elements missing, or visible cracks.
2 (Major Damage)	Partial wall or roof collapse, encroaching volcanic flow, or surrounded by water/mud.
3 (Destroyed)	Scorched, completely collapsed, partially/ completely covered with water/mud, or otherwise no longer present.



DATA



Pre-event



Post-event



Annotations

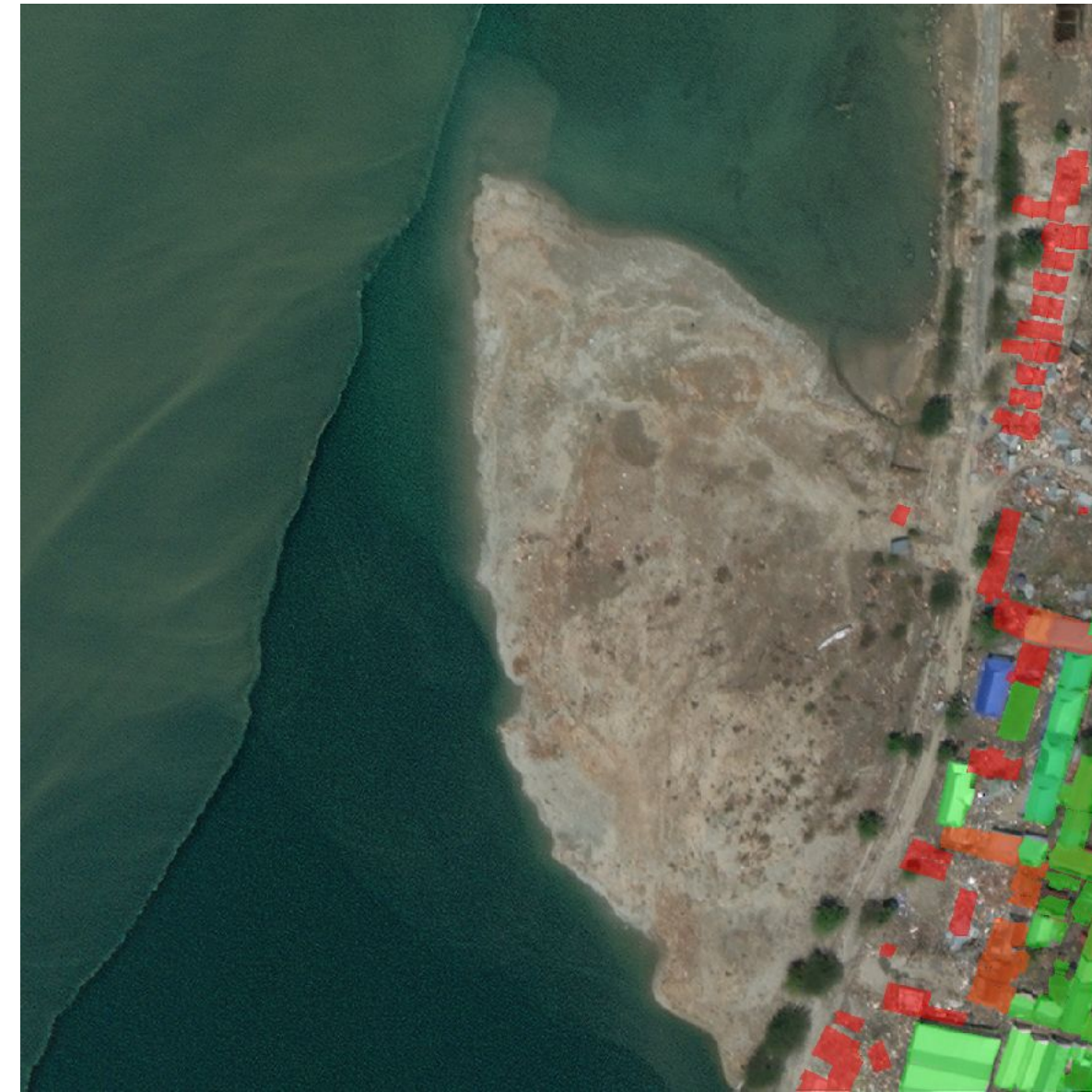
DATA



Pre-event



Post-event

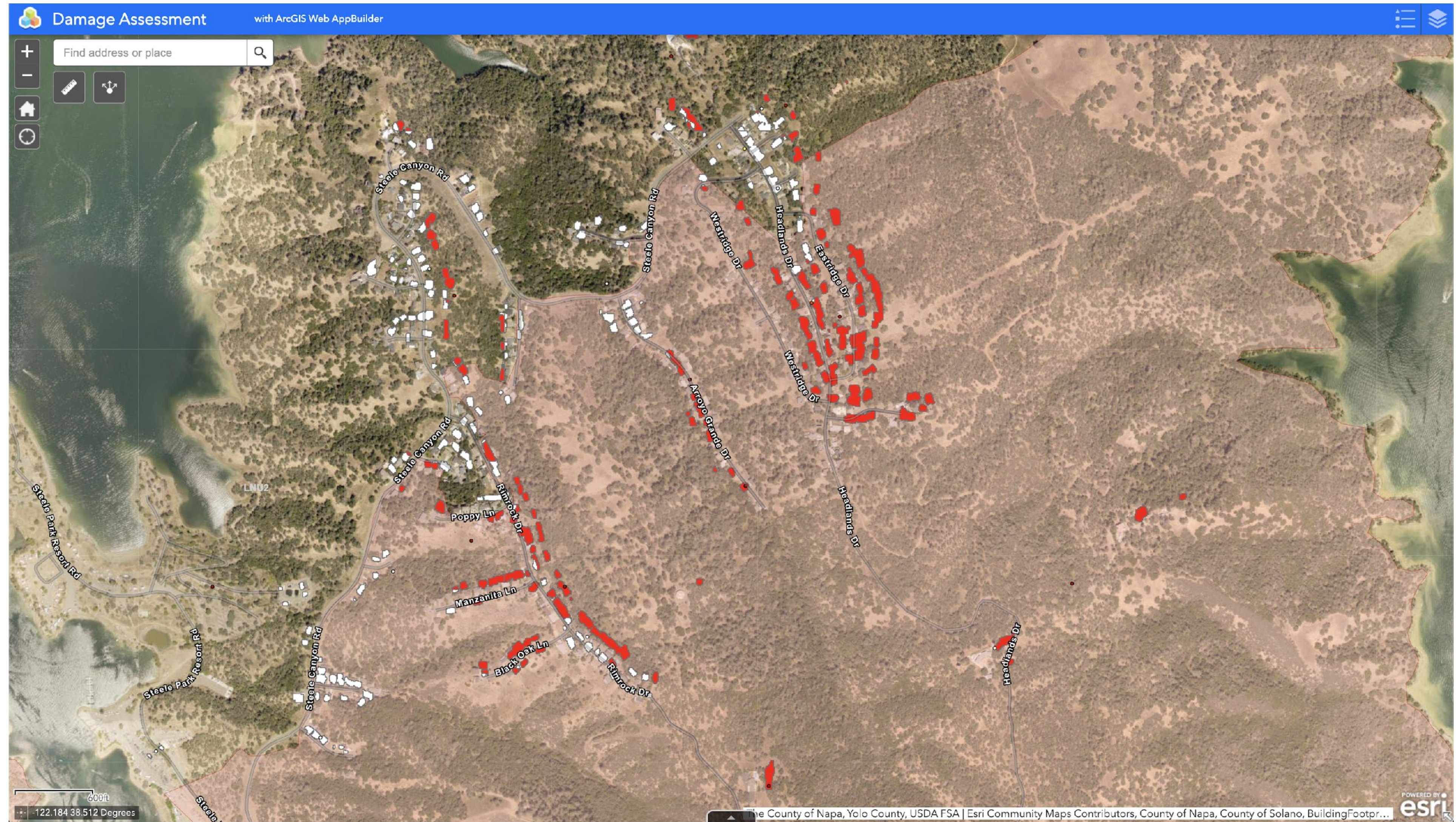


Annotations



Inference

DEPLOYMENT



DATA ACCESS

xView 1: <http://xviewdataset.org>

xView2: <https://xview2.org>

GitHub: <https://github.com/DIUx-xView>



PANELISTS

- Bryce Goodman
Consultant, AI/ML Portfolio
Defense Innovation Unit
- Carol Smith
Sr. Research Scientist in HMI
Software Engineering Institute,
Carnegie Mellon University
- Aaron Reite, Ph.D.
Senior Staff Scientist
National Geospatial-Intelligence Agency
- Richard Marcum
R&D Scientist
National Geospatial-Intelligence Agency



WORK WITH US

www.diu.mil

CONTACT US

www.diu.mil/contact-DIU

FOLLOW US

