



SPECIAL OPERATIONS FORCES ACQUISITION, TECHNOLOGY, & LOGISTICS **EXPANDING THE COMPETITIVE SPACE**

COL Joseph R. Blanton, Program Executive Officer – SOFSA
SPECIAL OPERATIONS FORCES SUPPORT ACTIVITY (SOFSA)



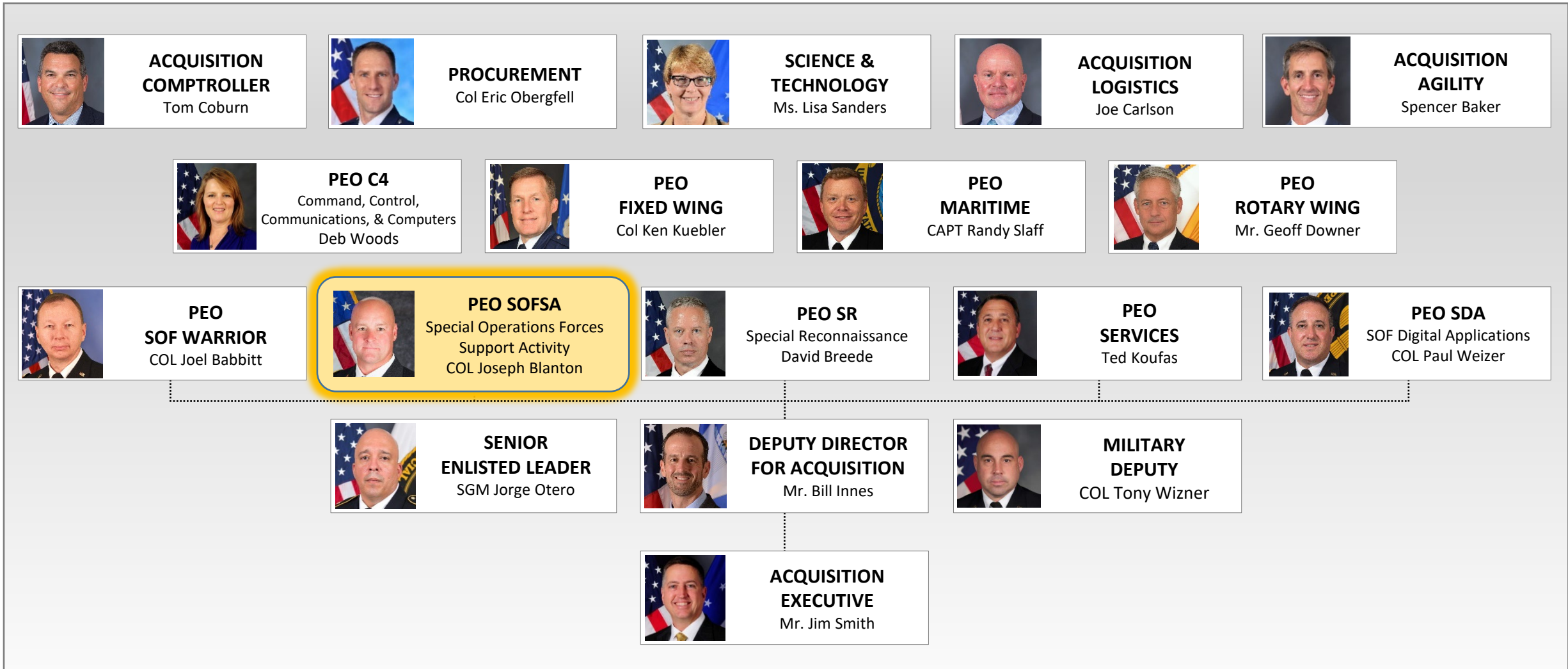
Agenda

- Video
- Organization
- PEO SOFSA History
- SOF Support
- PM Expeditionary Support
- Enterprise
- Industry Opportunity

Program Executive Office Special Operations Forces Support Activity
PEO SOFSA: OVERVIEW



Special Operations Forces Acquisition, Technology, & Logistics Organization



PEO SOFSA History



USSOCOM
Established
1987



160th Blackhawks 1st
Modified at SOFSA
1992



1st JOS Requirement
at SOFSA
2001



MH60M Production/
Integration Start
2007



SOFSA Established as
PEO SOFSA
2010



1st MTRC Req.
at SOFSA
2013



1st Maritime
Req. at SOFSA
2015



MH60M Production
Completed
2015



JOS Program in
PEO SOFSA
2019

1988
SOFSA Established as
GOCO at CECOM,
Lexington, KY

1995
Little Birds Moved
to SOFSA

2002
First USASOC Unit
Redistro Center Rqmt
at SOFSA

2013
First AC130J
Requirement
at PEO SOFSA

2014
First 12XX Req.
at SOFSA

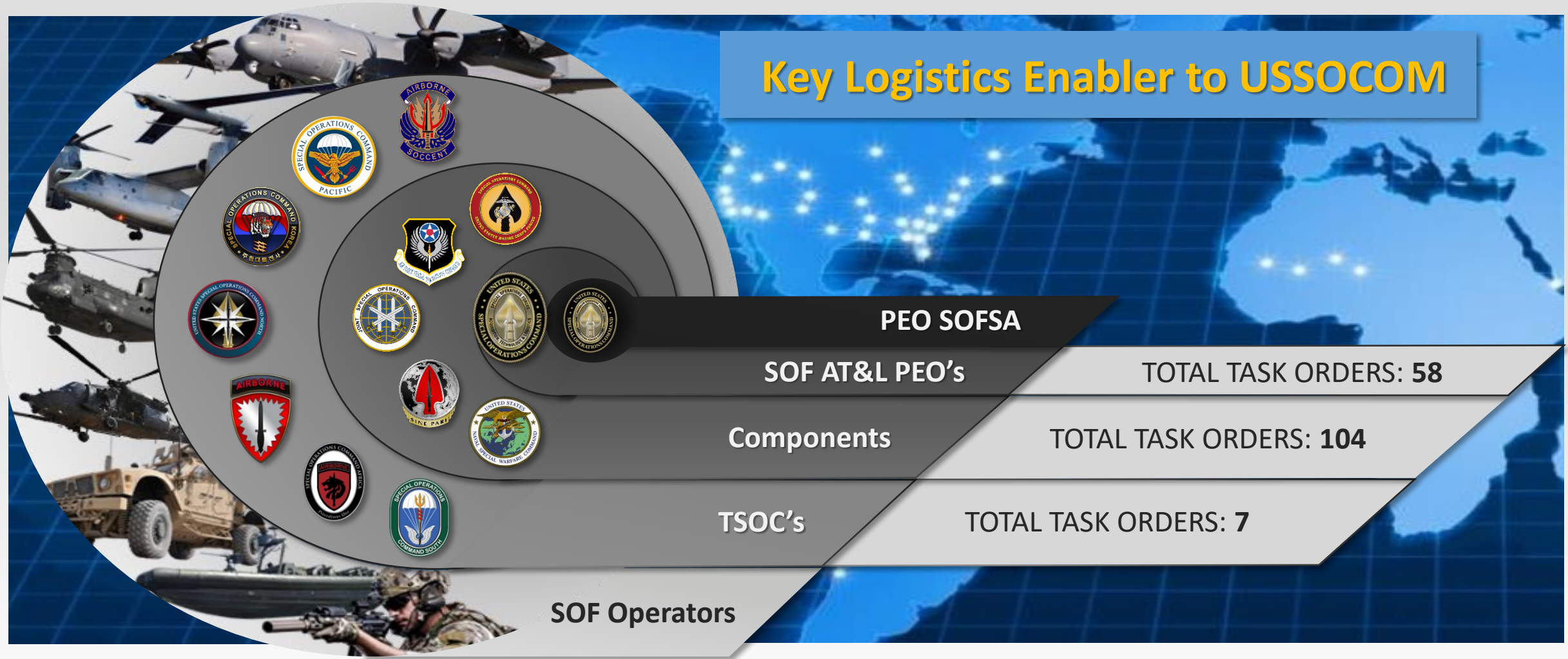
2015
Pass Back Maint.
at 160th FTCKY

2018
MELB Consolidated
at Bluegrass Station

2020
PM Expeditionary
Support

PEO SOFSA Support to SOF

Key Logistics Enabler to USSOCOM



Program Executive Office Special Operations Forces Support Activity (SOFSFA)

ROTARY WING



PLATFORMS

- MH-47Gs
- MH-60Ms
- AH/MH-6Ms
- Non-Standard
- Depot Level Maintenance

SUPPORTING

- PEO Rotary Wing

SOF SYSTEMS



EQUIPMENT

- SOF Weapons
- SPEAR / Tactical Combat Casualty Care
- C4 / Electronic Countermeasures
- SRSE – Surveillance / Reconnaissance
- 12XX



SUPPORTING

- PEO SOF Warrior
- PEO C4
- PEO SR

GROUND



PLATFORMS

- MATVs / MRAPs
- NSCVs
- MRZRs
- LTATVs
- GMV 1.1

SUPPORTING

- PEO SOF Warrior

PEO SOFSA TEAM



ON-SITE STAFF

- Expeditionary Support PM
- Program Support
- Business Management
- Enterprise Management
- Finance
- Acquisition Attorney
- Strategic Plans
- DCAA
- DCMA
- Prime Contractor

PEO SOFSA

MISSION

Enable Global SOF Operations Through Dedicated Life Cycle Sustainment

VISION

Trusted Experts for SOF Logistics & SOF Peculiar Modifications

CORE COMPETENCIES

1. Production & Integration
2. Streamline Design & Rapid Prototyping
3. Life Cycle Sustainment Activities

PM-ES

- JOS
- MTRC
- FUTURES



SUPPORTING ALL USSOCOM

PEO SOFSA OPERATION



ENTERPRISE

- 2.7M sq. ft. of facilities
- Climate Controlled Storage
- Weapons Storage / Range
- Reverse Engineering
- Fabrication / 3D Printing
- Depot+ Aviation Capability
- Safety – Security – IT

BUSINESS & FINANCE

- 10YR \$8B IDIQ
- 10 KO's - 1 Unlimited Warrant
- Accept All Funding Types

FIXED WING



PLATFORMS

- AC/MC-130Js
- CV-22s
- MQ-9s
- CASA 212, C-12
- C27Js
- UAS

SUPPORTING

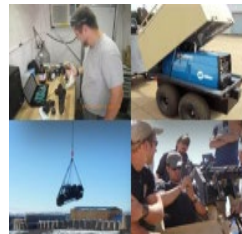
- PEO Fixed Wing
- AFSOC
- USASOC (ARSOAC)

EXPEDITIONARY SUPPORT PROGRAM OFFICE

Mobile Technology Repair Complex (MTRC)

Joint Operational Stock (JOS)

Future Capability Development



MARITIME



PLATFORMS / EQUIPMENT

- SURFACE
 - Combat Craft Heavy
 - Combatant Craft Medium
 - Combatant Craft Assault
- UNDERSEA
 - S351
- DIVE LOCKERS

SUPPORTING

- PEO Maritime
- NSWC

Joint Operational Stock - JOS

JOS provides a centrally managed repository of Special Operations Peculiar (SO-P) equipment at PEO SOFSA, configured for rapid response to approved SOF Requirements.

- **Temporary Loans of Mission Critical Equipment** to SOF Units in order to conduct training and contingency operations
- **Augments and Enhances** SOF Units' **organic operational capabilities**, requiring little or no additional training



Mobile Technology Repair Complex - MTRC

MISSION

MTRC provides the capabilities and processes to **rapidly modify, repair, and fabricate** SO-P equipment and facilities, at the **point of need**, in order to bridge operational gaps and adapt to opposition or environment change.

13 MTRC TEAMS DEPLOYED GLOBALLY

CAPABILITIES

Point of Need engineering at austere or limited support locations.

- 1 USG Civilian Engineer + 1 SOF Technician.
- Specialized skills in the following:
 - Engineering (CAD, 3D printing)
 - Welding, Machining, Advance Manufacturing
 - Carpentry / Electrical
 - Kydex & Sewing



Developmental Activities

- **USSOCOM Austere Welding Combat Evaluation (CV)**
- PM-ES, in Conjunction with Acquisition Agility, and SOFWERX conducted a CV Challenge to address an MTRC known operational deficiency with welding technologies employed by MTRC in support of SOF. The goal was to identify relatively mature welding systems/capabilities to reduce the number/types of welding systems from 5 to 3 or less systems per each MTRC Team location.



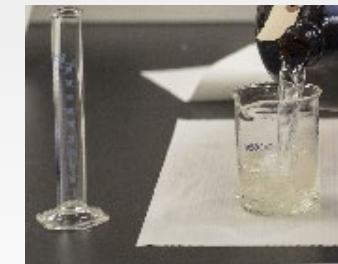
- **USSOCOM Austere 3D Printing**
- PM-ES, in coordination with SOFWERX, executed a Rapid Innovative Prototyping Series (RIPS) to find COTS 3D printers that could be designed/modified/optimized to meet the unique SOF requirements (i.e. size, weight, power, mobility, survivability, etc.) needed in support of USSOCOM SOF missions.



- **USSOCOM Power Distribution Panel (PDP)**
- PM-ES teamed with SOF AT&L S&T, LMCO and Highland Engineering to address an MTRC known operational deficiency with power distribution for MTRC COTS equipment. The PDP will take a generic 220v single phase input and split it up into multiple 110v and 220v outlets 200 amp transfer switch and 50, 30, and 20 amp breakers.



- **USSOCOM Portable Fuel Tester**
- PM-ES is working to refine customer requirements for a small, portable, testing kit that that can be easily stowed on small aviation platforms (MELB, etc.) and utilized by non-fuels personnel (92F / 2F) to ensure serviceability of non-DLA-E procured fuel supplies in austere locations.



PEO SOFSA Enterprise

Logistics Operations

\$3.9B Inventory and Processing
87K Receipts / 125K issues
Annually (FY20)

Facility Management

2.7M square feet of
PEO SOFSA leased.

Environmental, Safety, and Health

Ground and aviation safety
programs that comply with all
applicable Federal, state, and
local environmental, safety, and
health laws, regulations, policies,
and procedures.

Security Management

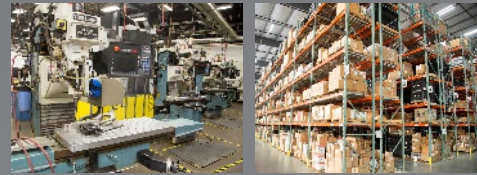
Information, personnel, and
physical security, OPSEC,
COMSEC, and Force Protection
IAW DoD standards and guidance.

IT Management

SIPR/NIPRnet operations for
SOFSANet and Applications for
SOF GLSS.

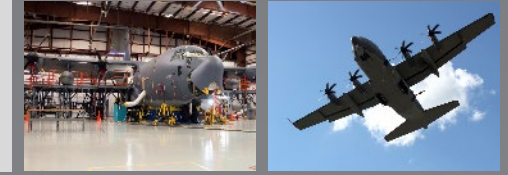
Bluegrass Station

Total Sq. Footage:	2,432,516
Administrative:	277,971
Production:	584,632
Flight Line Apron:	0
Warehousing:	1,060, 673
Outside Storage:	509,240



Crestview, FL

Total Sq. Footage:	314,000
Administrative:	24,000
Production:	96,000
Flight Line Apron:	194,000
Warehousing:	0
Outside Storage:	0



Hill Ave., FWB, FL

Total Sq. Footage:	37,350
Administrative:	22,267
Production:	0
Flight Line Apron:	0
Warehousing:	15,083
Outside Storage:	0



Totals

Total Sq. Footage:	2,783,866
Administrative:	324,238
Production:	680,632
Flight Line Apron:	194,000
Warehousing:	1,075,756
Outside Storage:	509,240



PEO SOFSA Enterprise & Facilities

Logistics Operations

\$3.43B – SOF Inventory
87K Receipts / 125K Issues Annually

Facility Management

2.7M square feet of PEO SOFSA leased space

Environmental, Safety and Health

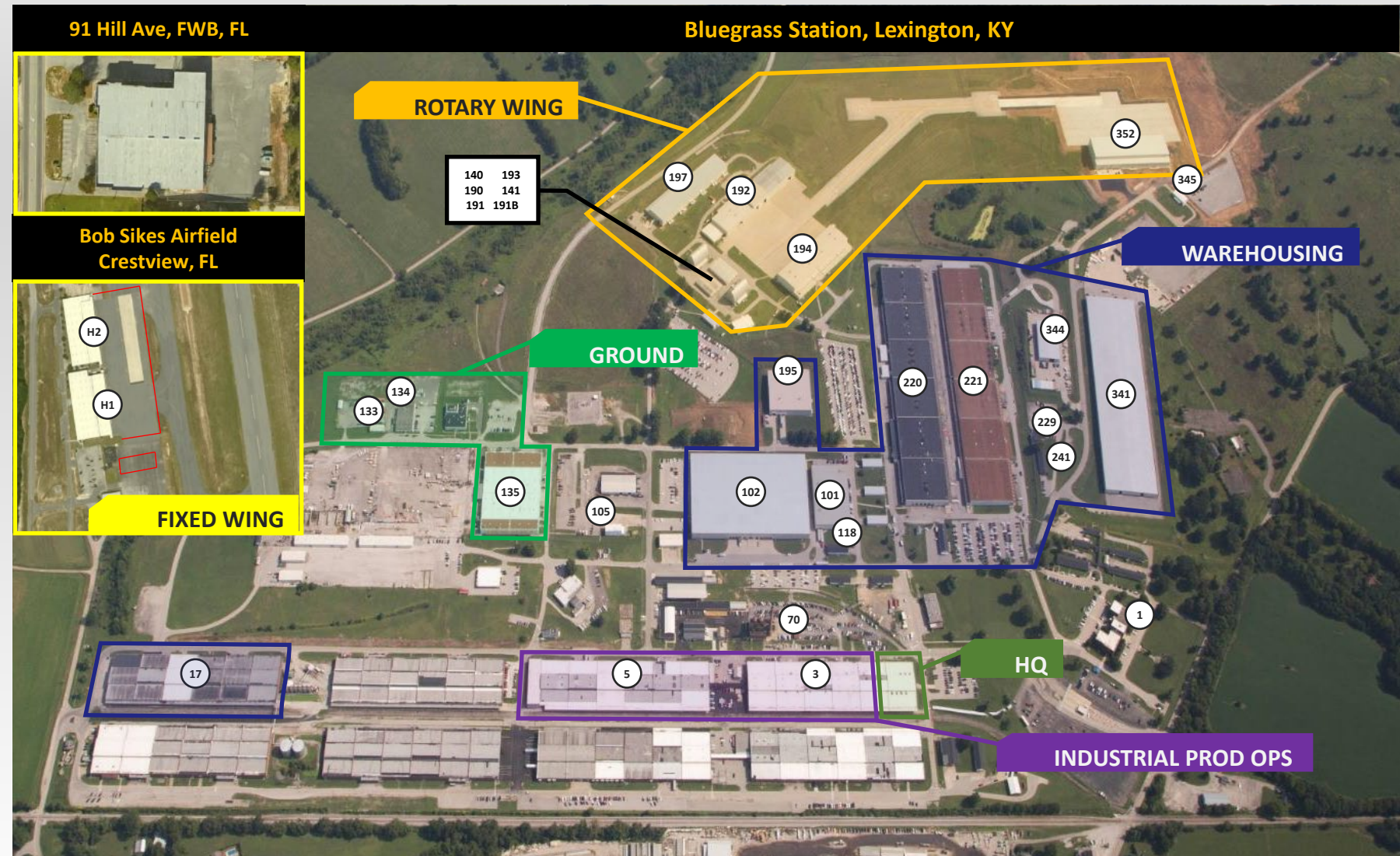
- Federal, State, and Local Environmental
- Ground and Aviation Safety Programs
- Health Regulations, Policies, and Procedures

Security Management

- OPSEC / COMSEC
- Information, Personnel, and Physical Security
- Force Protection IAW DoD Standards

IT Management

- SIPR/NIPR Operations
- Applications for Enterprise and SOF GLSS



PEO SOFSA SOF GLSS IDIQ Contract Facts

Organization Environment: State Owned / USG Leased / Contractor Operated

- PEO SOFSA management and oversight with USG / Contractor Staff including DCAA & DCMS Onsite
- Lockheed Martin performs Enterprise Operations
 - Provides 4,300+ employee workforce (Prime and Subcontractor Support)
 - Executes 200+ task orders per year

Designed for Rapid Response to SOF Requirements

- 10yr \$8B IDIQ – Pre-competed contract vehicle for SOF community
- Contract Allows users responsive and flexible access to logistics support and services
 - Contract agility enables customers to achieve task order award within 10 days from receipt of RFP
 - Average 17 Day Turn-around on proposals – SOO to CEP
 - Global Logistics at the Speed-of-SOF

Cost – Competitive Rate Structure / Low Overhead Performance

- Skilled and dedicated workforce tailored to meet needs of SOF community

PEO SOFSA Global Logistics Reach

USASOC

JBLM, WA
Moffett Field, CA
Mesa, AZ
Yuma, AZ
Fort Carson, CO
CPs Williams & Draper
Fort Campbell, KY
Fort Bliss, TX
Fort Bragg, NC
Birmingham, AL
Hunter AAF, GA
Fort Benning, GA
Eglin AFB, FL

AFSOC

Cannon AFB
Kirtland AFB
Hurlburt Field, FL
United Kingdom

TSOC/SOTF

Camp Smith, HI
SOCOM/SOCCENT
Homestead, FL
Niger
Chad
Nigeria
Cameroon
Baumholder
Stuttgart, Germany
Croatia
Syria
Iraq
Kuwait
Qatar
UAE
Lebanon
KSA
Jordan
Yemen
Djibouti

Somalia

Tajikistan

Afghanistan

Okinawa

Philippines

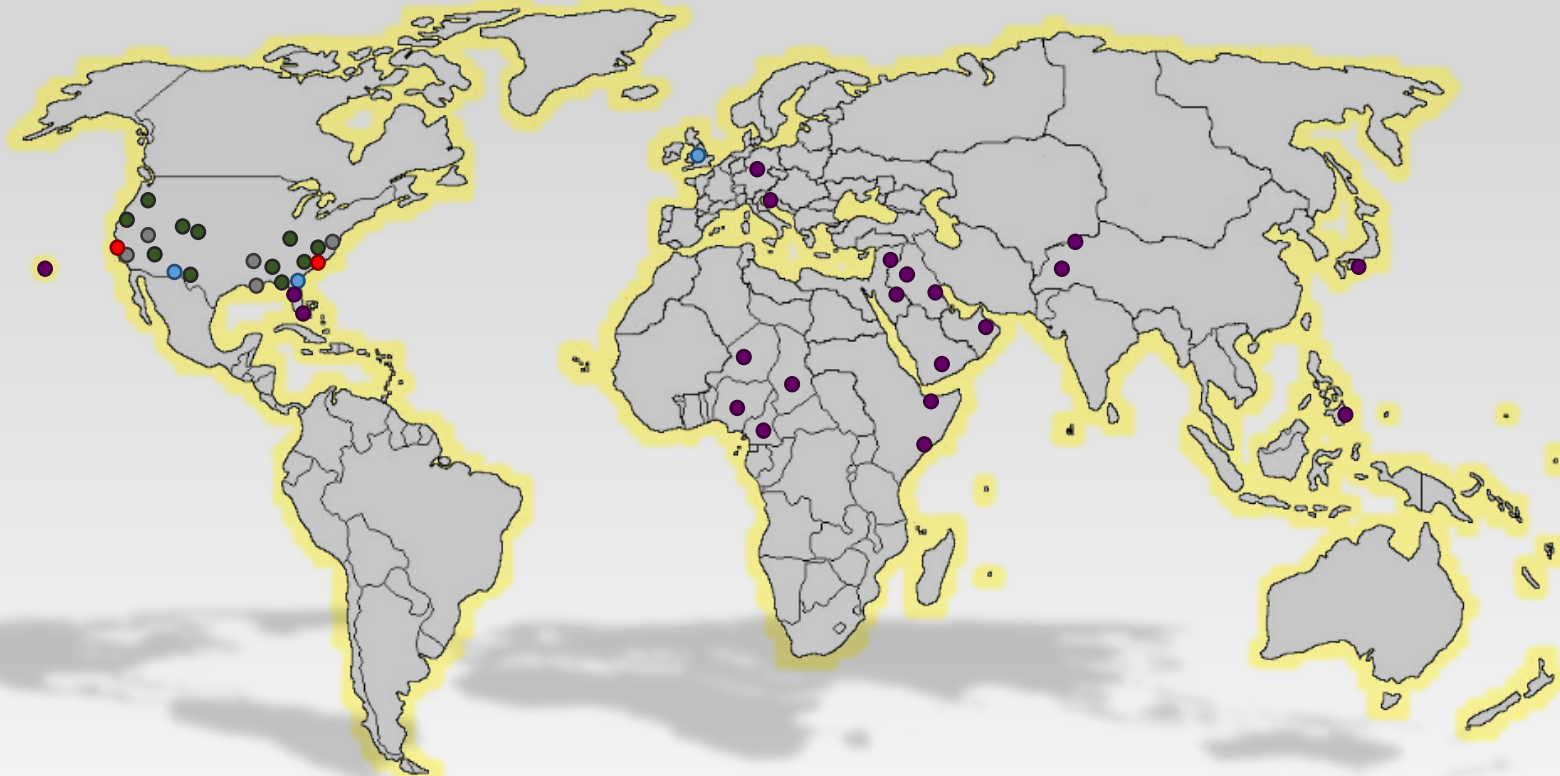
NSWC

Coronado, CA
San Clemente, CA
La Posta, CA
Niland, CA
Fallon, NV
Fort Chaffee, AR
Stennis, MS
Fort Story, VA

MARSOC

Camp Pendleton, CA
Camp Lejeune, NC

Supporting Global SOF



Deployed Field Reps: ~425 Average

Industry Opportunity

- **LM Interest: Additive Manufacturing Technologies with High Quality Production Rates**
 - Identify solutions to incorporate hardware that is manufactured utilizing additive processes that can be installed on product with short life cycle qualification processes.
- **LM Interest: Inventory Management Technologies that Increase Accuracy and Labor Hours**
 - Identify SOF compliant RF Technologies that will enable an enhanced inventory management approach eliminating manual counting and verification.
- **LM Interest: Digital Transformation**
 - Solutions that utilize agile technologies to increase speed and deliver value to the customer
Business models that accelerate programs to deliver new technology from the factory to the field and enhance the customer experience
- **SOFSAs Interest: Expeditionary Power Generation & Life Support Systems (Shelters, Filtration, Mobility, Medical etc.)**
 - Transportable (Individual to Small Teams) Minimal Setup/Store Times, Recyclable/Consumable with Low Footprint and Logistics Support Tail and Maintenance

PEO SOFSA

PROGRAM EXECUTIVE OFFICE FOR SPECIAL OPERATIONS FORCES SUPPORT ACTIVITY



Questions

