



MBSE Model Management

Full Lifecycle Configuration Management of MBSE Models

Chris Garrett, SL
Systems Engineering

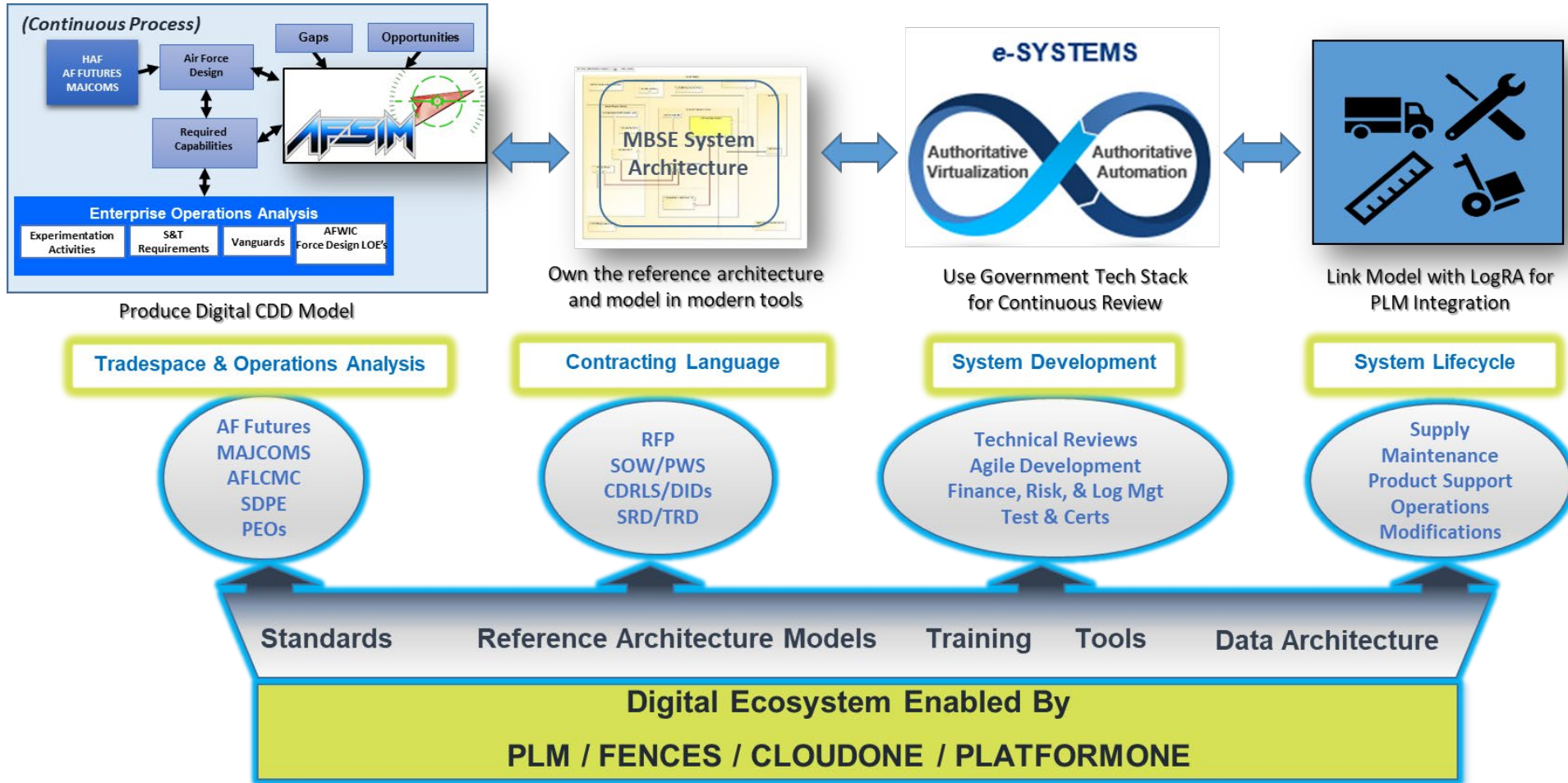


Overview

- **BLUF:**
 - **System Model Configuration and Release Management is basically like Software Configuration and Release Management**
- **Key point is that Software Configuration Management (SCM) tools allow us to manage multiple configuration baselines**

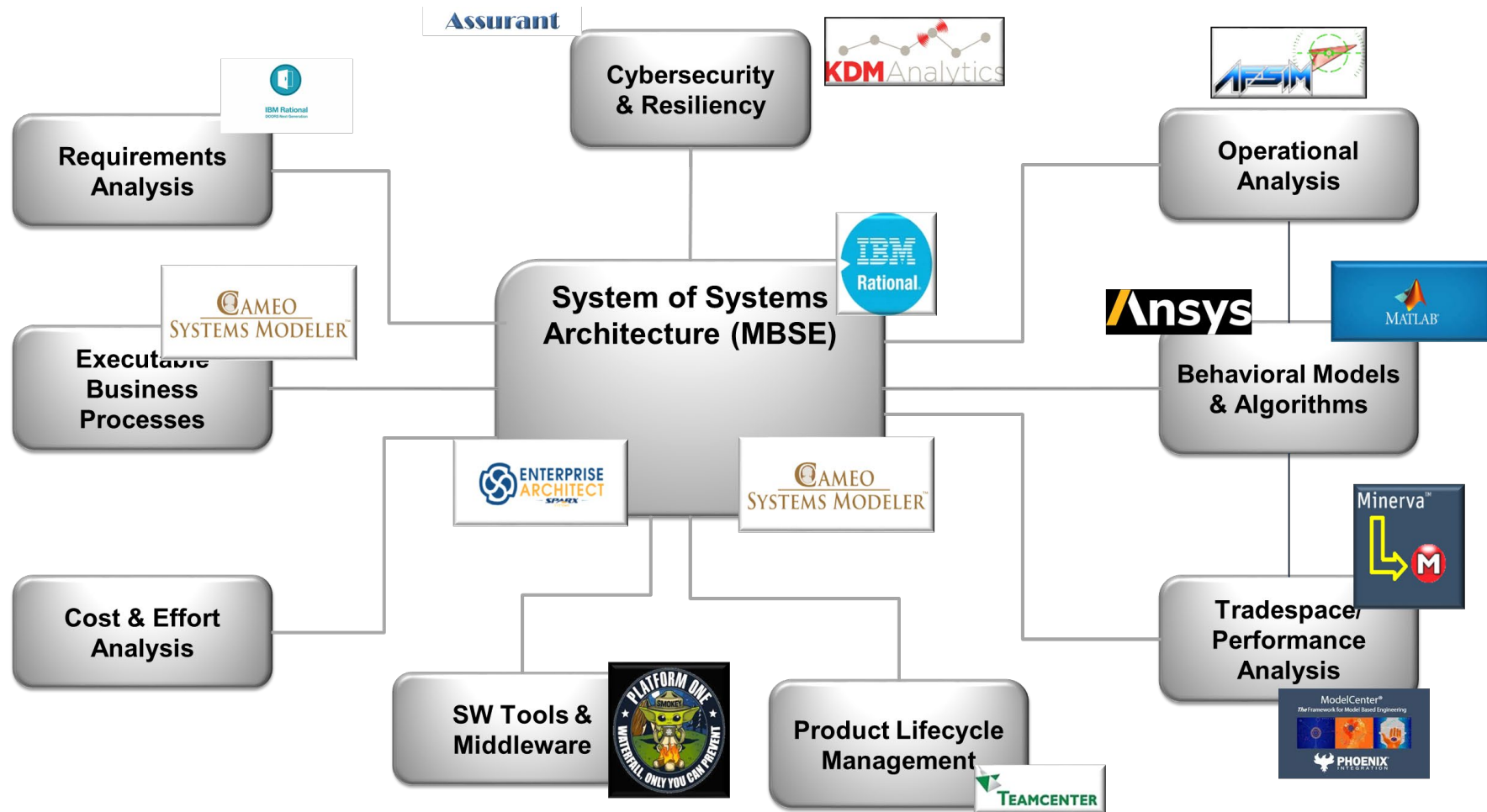


Digital Ecosystem



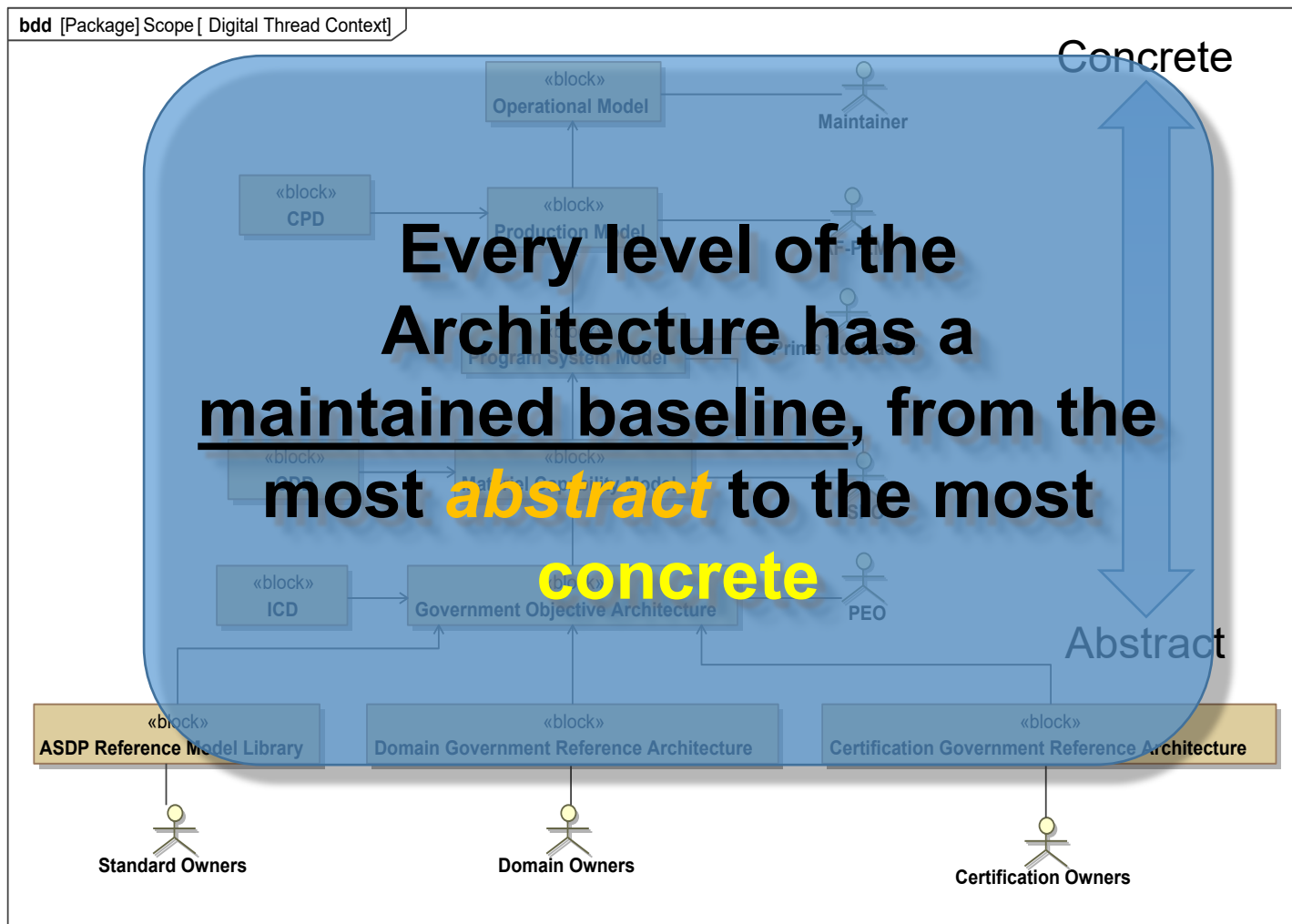


Architecture in Action!





ASDP Future in the Digital Thread



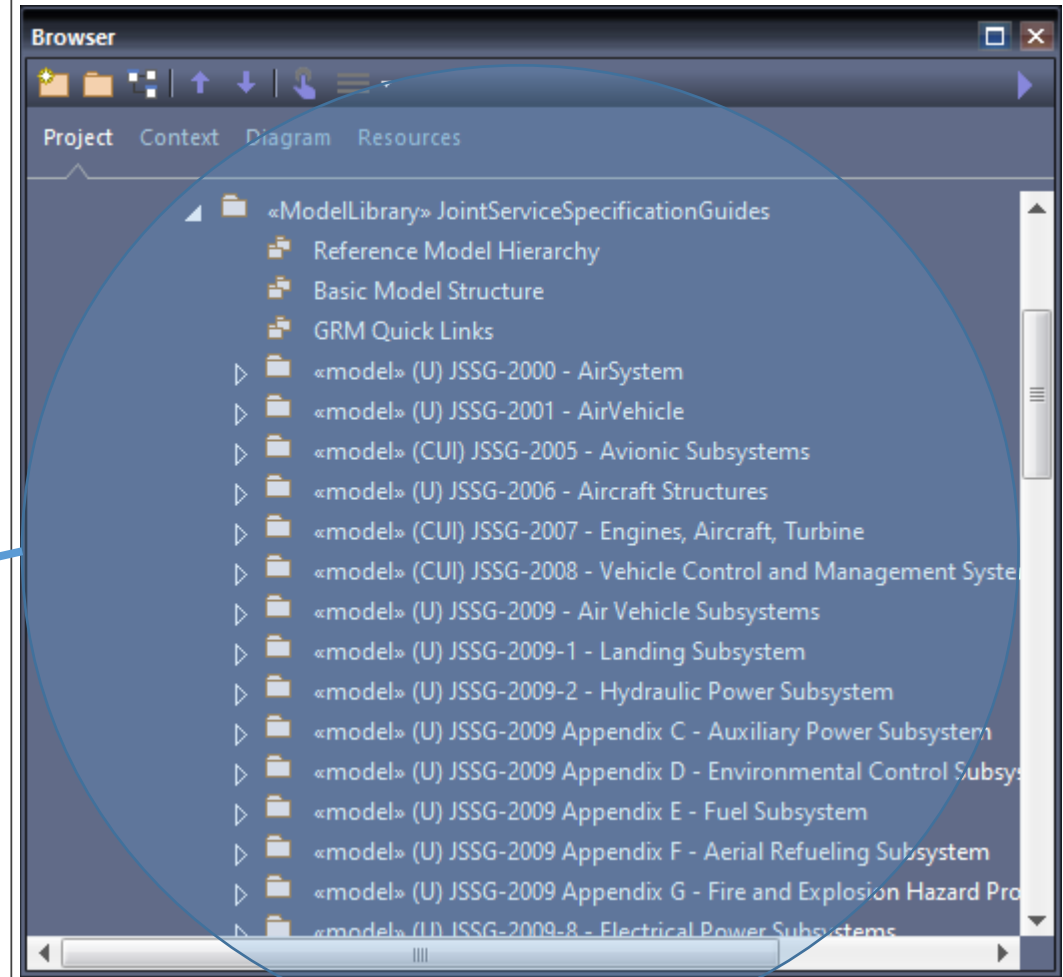
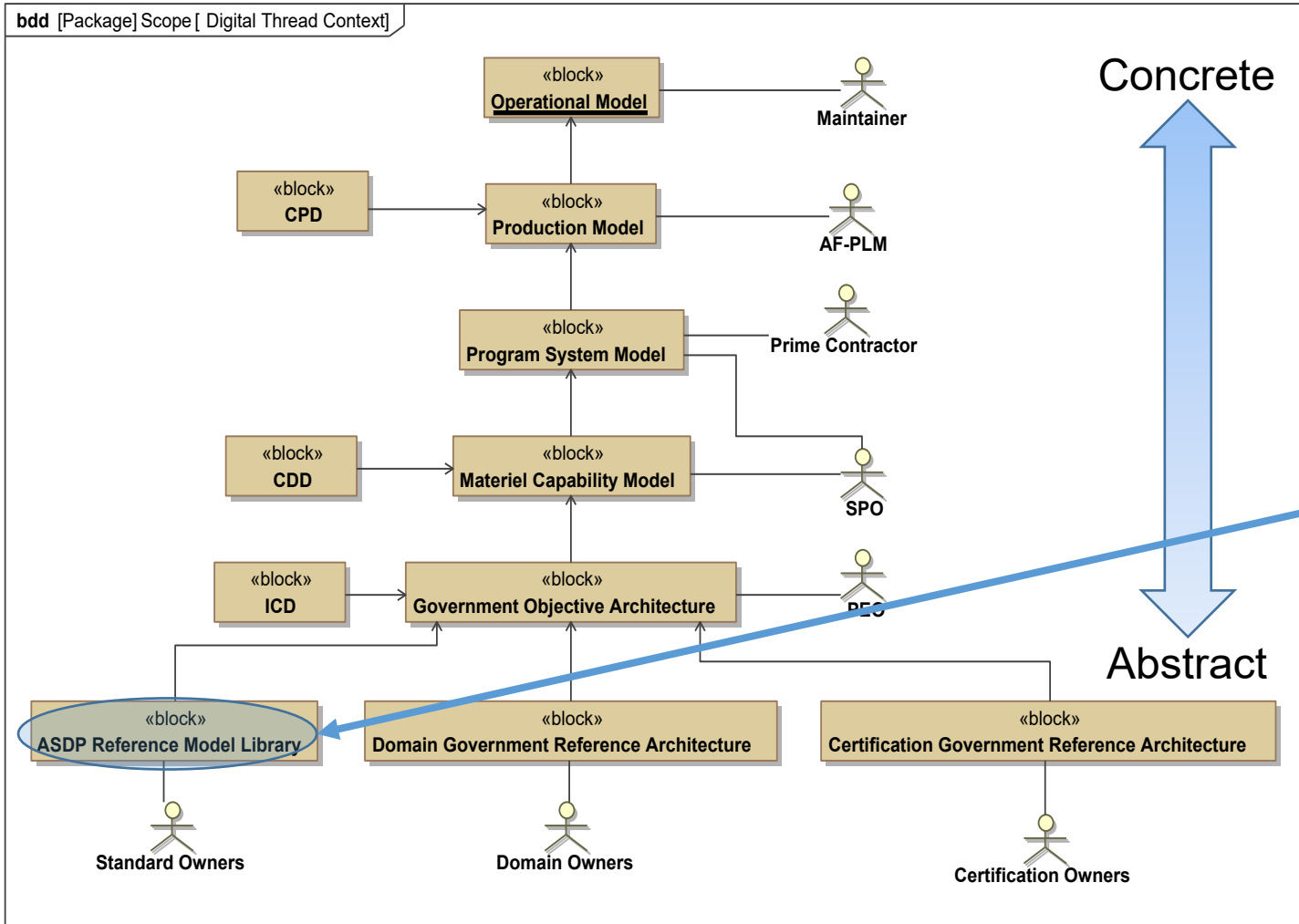


Baseline Configuration Considerations

- **Software attempts to merge to a single trunk release**
 - Not always possible
 - Different targets need different feature sets from the trunk
 - Sometimes with modifications of the trunk that are never merged back
 - Results in multiple edition releases
- **Theoretically, the only common aircraft baseline will be the abstract Air Vehicle model**
 - Each level of the architecture has a release branch of its own
 - Each branch is managed separately as its own “trunk”
 - Changes to the more abstract trunk may drive changes to more concrete
- **Every Air Vehicle will consist of library-based common system / subsystem elements (from the JSSGs), but pulls “Legos” from the library to define the whole**
- **Model libraries are separate baselines**

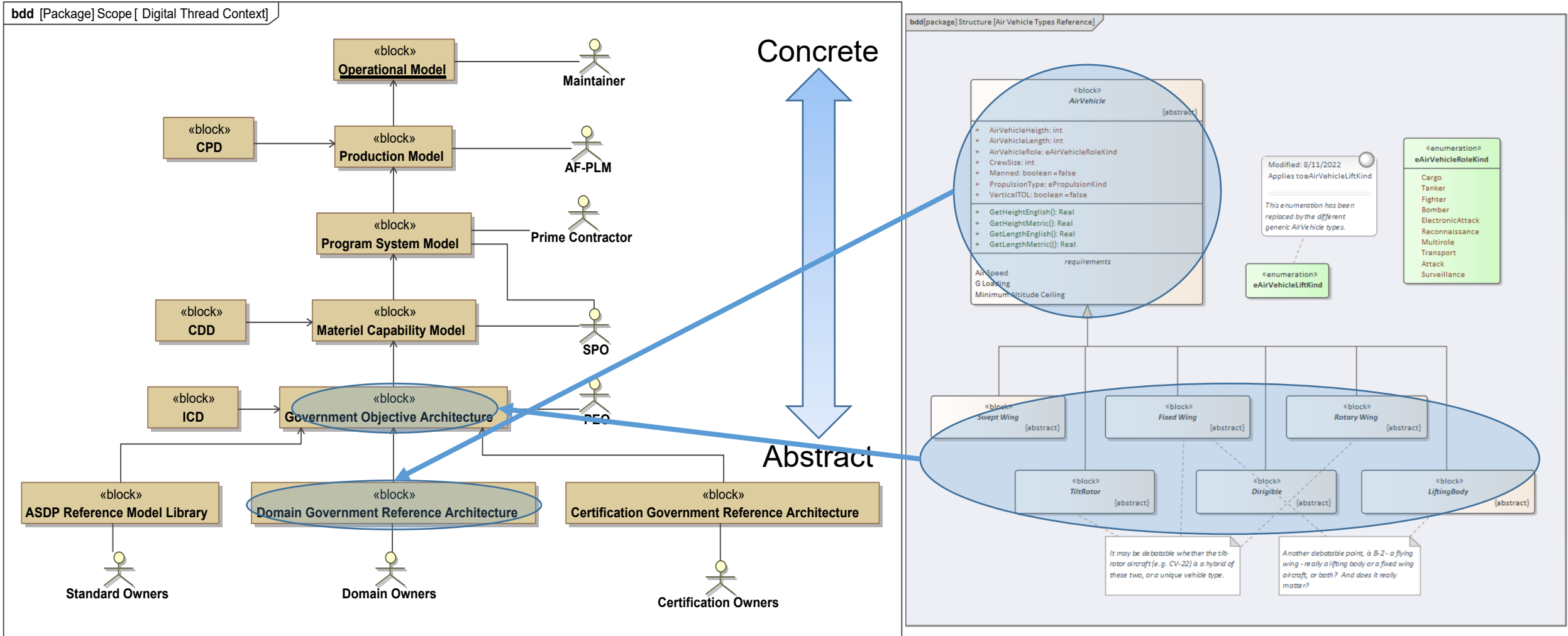


Abstract Models Managed per Level



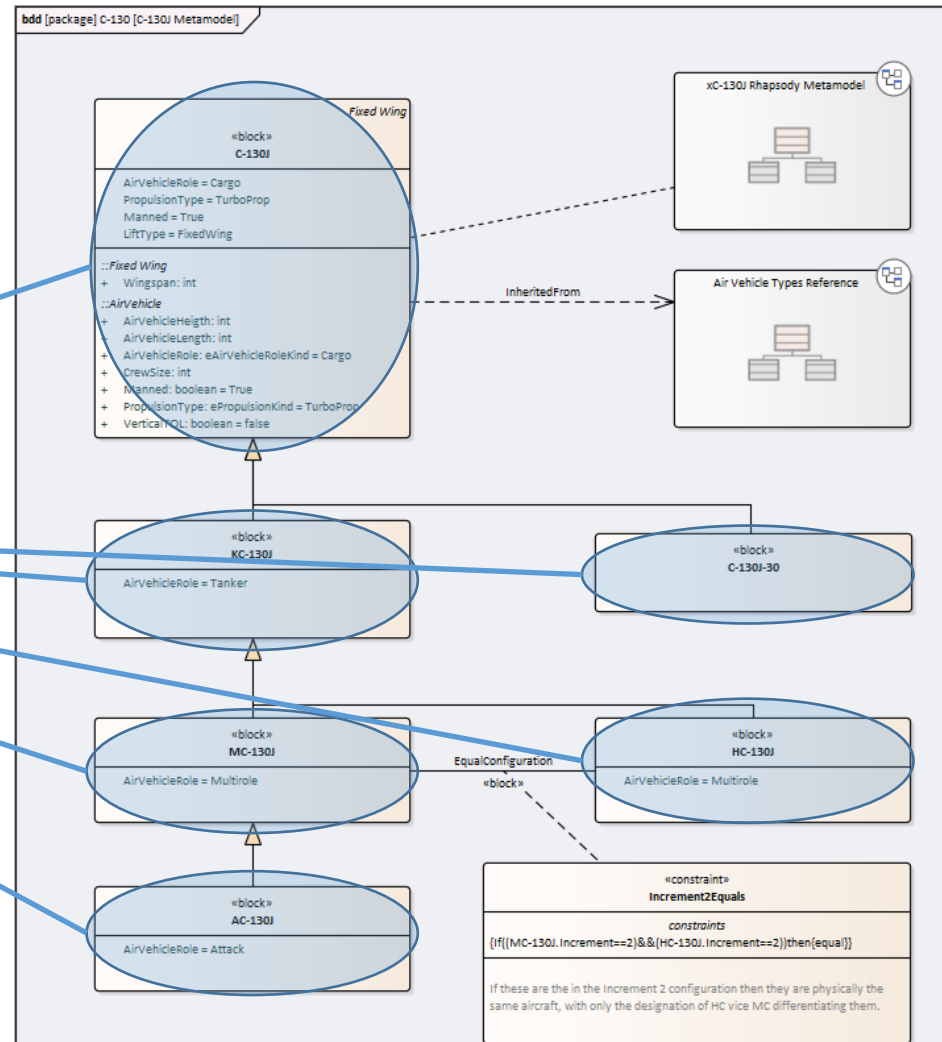
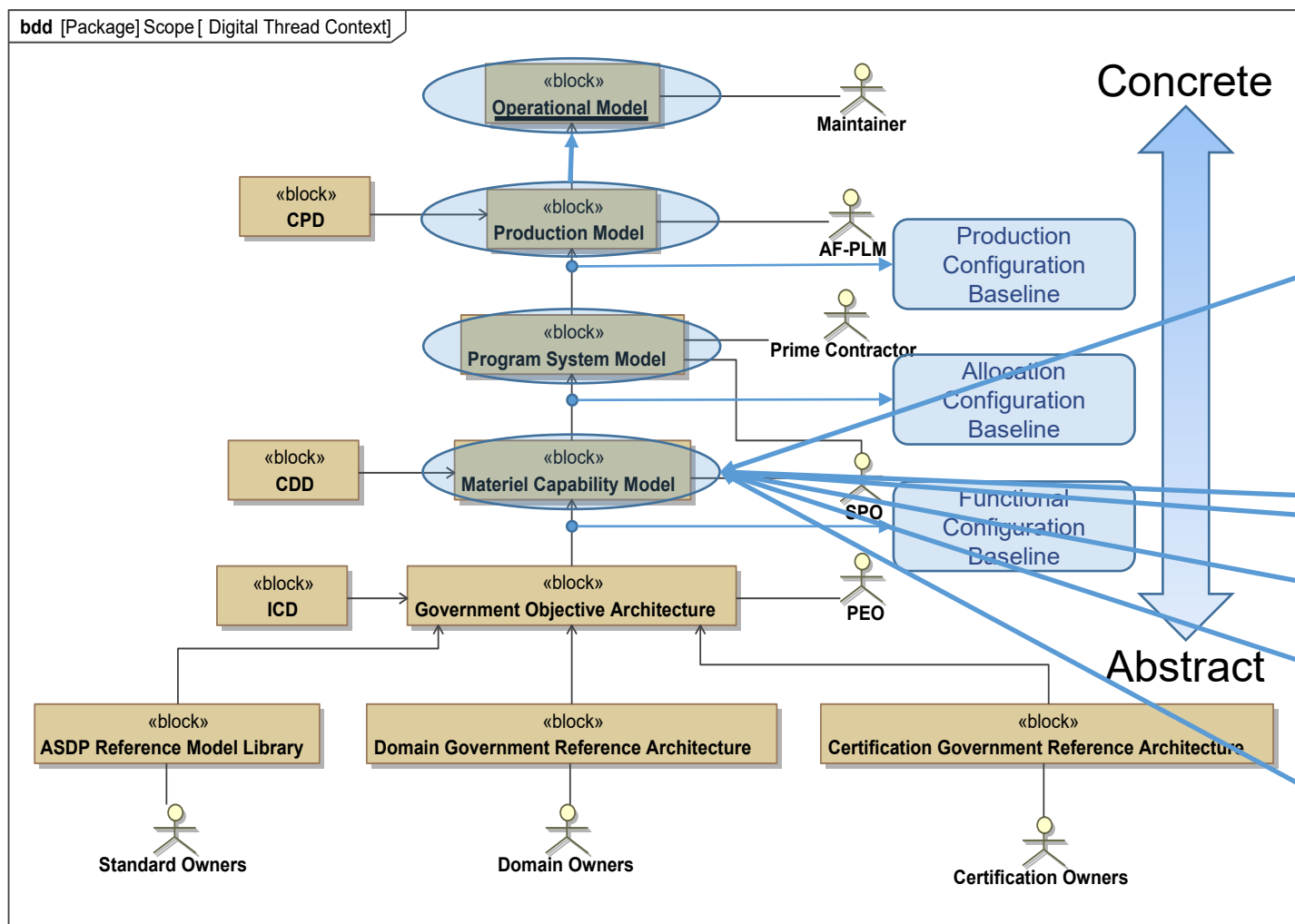


Abstract Models Managed per Level





Abstract Models Managed per Level





Summary

AFLCMC... Providing the Warfighter's Edge

- **CM of MBSE Models basically equivalent to Software CM**
 - Will be even more so with SysML v2.0
- **Multiple levels of architecture CM is needed**
 - Each level needs its own repository
 - Repositories need to be able to exchange model data



Questions

AFLCMC... Providing the Warfighter's Edge





Changes in the Near-term Future

- **SysML v2.0 is in review (with updates) for formal release**
 - Target date may have slid into 2023/24
 - Based on a new language standard (not a UML profile)
 - Kernel Modeling Language (KerML)
 - KerML v1.0 is also in review for formal release
- **SysML (and KerML) is text-based**
 - Still has a graphical representation
 - Tools are expected to add text editing with graphical editing
- **Model CM will be virtually identical to SCM**
 - Both managed at the textual content level