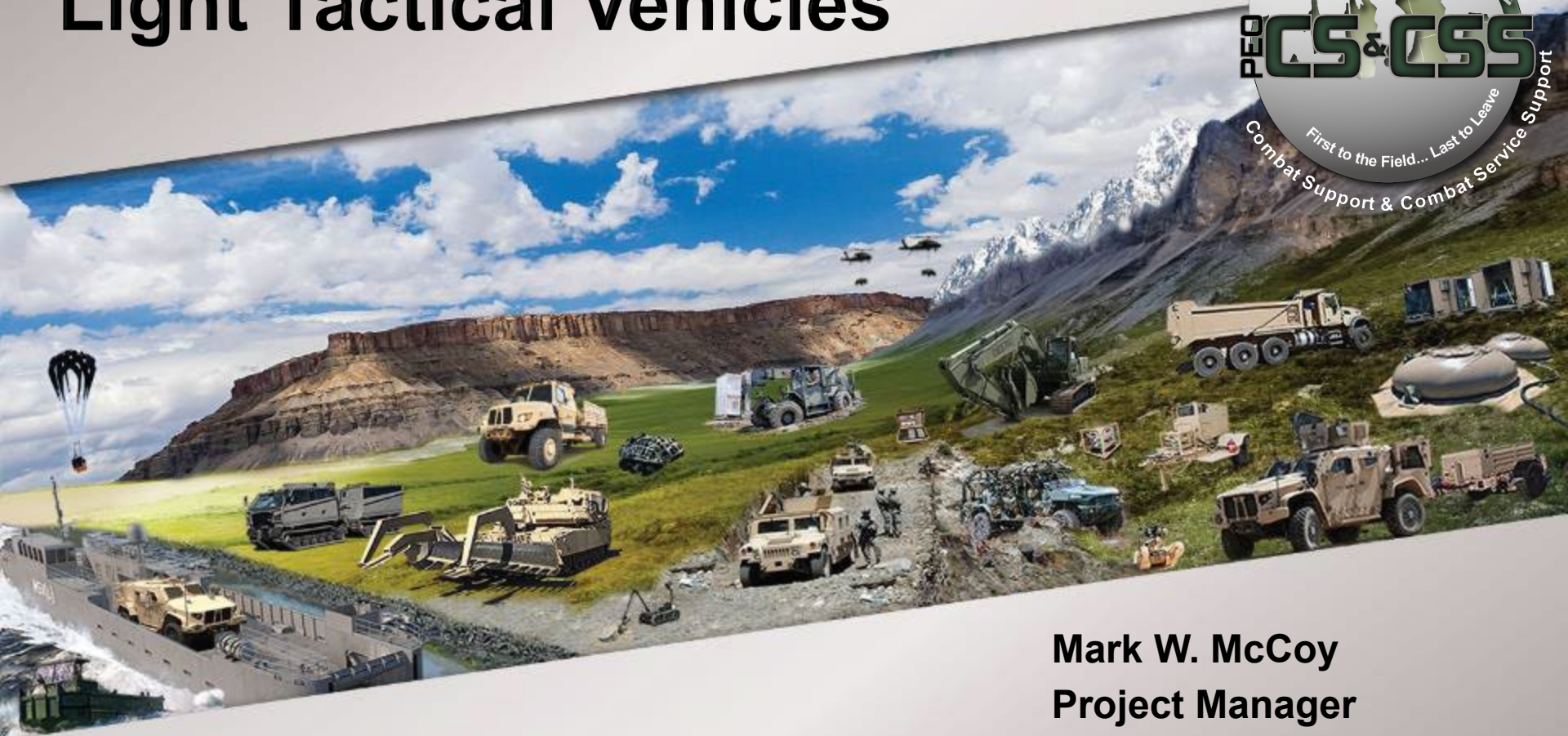


NDIA TWV

Joint Program Office Joint Light Tactical Vehicles



Mark W. McCoy
Project Manager

40800FEB25



UNCLASSIFIED // DISTRIBUTION STATEMENT A:
APPROVED FOR PUBLIC RELEASE

MISSION

Deliver the right capability at the right time to modernize and sustain the Light Tactical Fleet

VISION

Developing and empowering the premier acquisition workforce to deliver and support the world's best light tactical vehicle fleet to the joint force and coalition partners to win in an MDO environment.

The TWV Strategy and the Light Fleet



General Purpose



M1151A1
M1152A1
M1165A1
M1167



M997 /
M997A3
Ambulance



Heavy Guns Carrier



Close Combat Weapons Carrier



M1097A2
Utility/
M1097R1
RECAP



Utility



LEUT



JLTV-T



LTT-HC



Heavy Chassis

ISV



Acronyms List:

LEUT = Light Engineer Utility Trailer

LTT-HC = Light Tactical Trailer – Heavy Chassis

JLTV-T = Joint Light Tactical Vehicle Trailer

ISV = Infantry Squad Vehicle

JLTV Production and Sustainment

Focus Areas

- JLTV A2 Production Launch and First Article Testing
- JLTV A1 Truck & Trailer Fielding and Contract Closeout
- Sustainment Support (addressing readiness drivers)
- JLTV A2 Full Materiel Release / Fielding

Opportunities

- Supply Chain Diversification / Dual Sourcing (where feasible/appropriate)
- Obsolescence Management
- User Feedback Improvements (additional noise reductions, driver assist technologies, reliability improvements, storage improvements, etc.)
- Balance new technologies/capabilities and integrations with User fielding priorities and cost control
- Tools and procedures to enable unit organic maintenance



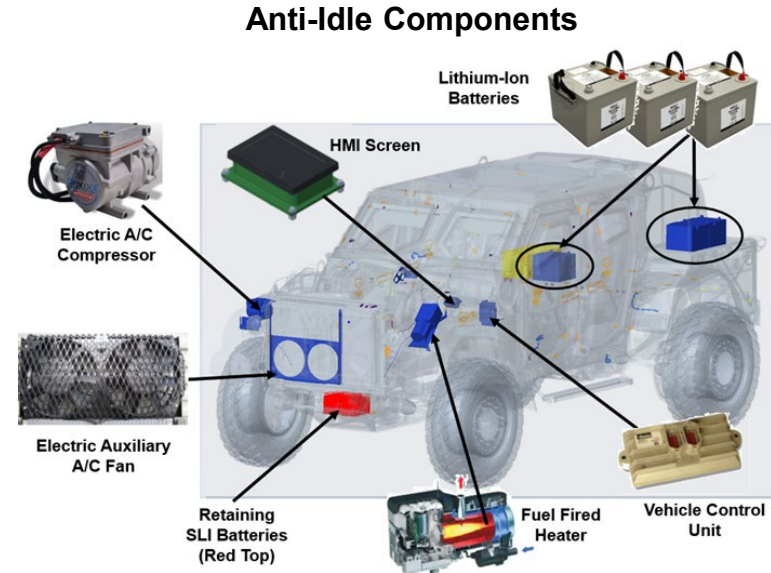
JLTV Capability Enhancements

Focus Areas

- A3 Integration (Engine, Shocks, Next Generation Vehicle Architecture and Software)
- FoV: C5ISR/Safety Capabilities, Obsolescence
- Customer Sustainment Support
- Extend Operational Reach initiatives and path forward
- Software Improvements and Sustainment

Opportunities

- Extend Operational Reach/Export Power
 - Hybrid development
 - Anti-Idle production and field retrofit
- On-going technology / capability upgrades (A0/A1/A2/A3)
 - Protected shelter development: Command and Control On-the-Move, Ambulance
 - Operation and sustainment in austere, extreme cold weather / arctic environments
- Support other Army Programs Integration:
 - Army Multi-Purpose High Energy Laser, Counter-Unmanned Aerial System (C-UAS), Army Tactical Intelligence Targeting Access Node, Ground Sensors, Assault Kitchen, Generators, QUADCONs
- A2/A3 Foreign Military Sales



LTV Focus Areas & Opportunities

Focus Areas:

- HMMWV Fleet Management
- Parts obsolescence and supply chain
- Digital Environment / Technical Data Package

Opportunities:

- Using obsolescence issues to drive system improvements
- Leverage JLTV components and supply chain
- Modernization focused on future upgrades





Focus Areas

- ISV Rapid Prototyping and Fielding
- ISV Full Materiel Release & Transition to Organic Sustainment
- Transformation in Contact
 - Lessons Learned (MLE, 3/10)
- Human Machine Interface
 - Command and Control Integration

Opportunities

- ISV Integration / Capability Improvement Efforts

- **Streamline and accelerate acquisition timeline and capability to Warfighters**
 - Rapid Prototyping
 - Opportunities to involve User early, iterate designs/improvements
 - Leverage Commercial Technology
 - Data Rights/Intellectual Property
- **Affordability – Reduce Lifecycle Sustainment Costs**
- **Increasing Power Demands (C5ISR, C-UAS)**
 - Onboard and export
- **Improve Fleet Readiness**
- **Design for Maintainability**
- **Supply Chain Management**
- **Software Upgrades and Sustainment**
- **Address Obsolescence**
 - Identify issues earlier
 - Opportunities to enhance capability

Point of Contact

- POC: JPO JLTV Operations Mailbox

usarmy.detroit.peo-cs-css.mbx.peo-cs-css-mailbox-jpo-jltv-action@army.mil

OR

- Valde Garcia, NDIA TWV Coordinator, valdemar.garcia.ctr@army.mil

Back Up Slides

Joint Program Office Joint Light Tactical Vehicles Organization Chart

